

Timucuan National Ecological & Historic Preserve Fort Caroline Memorial Relocation Civic Engagement



Call in Number for Audio: +1 202-640-1187, 851844228#
Meeting ID: 248 151 176 871 7
Passcode: 3N5Ja9iQ

July 23, 2025

Welcome



Figure: Fort Caroline Exhibit oblique aerial view (2019; Source: Google Earth)

Meeting Purpose

- Share project background and context
- Share project goals and priorities
- Initial opportunity to ask questions and provide feedback (Q&A)
- Gather information for future National Environmental Policy Act (NEPA) analysis and National Historic Preservation Act (NHPA)



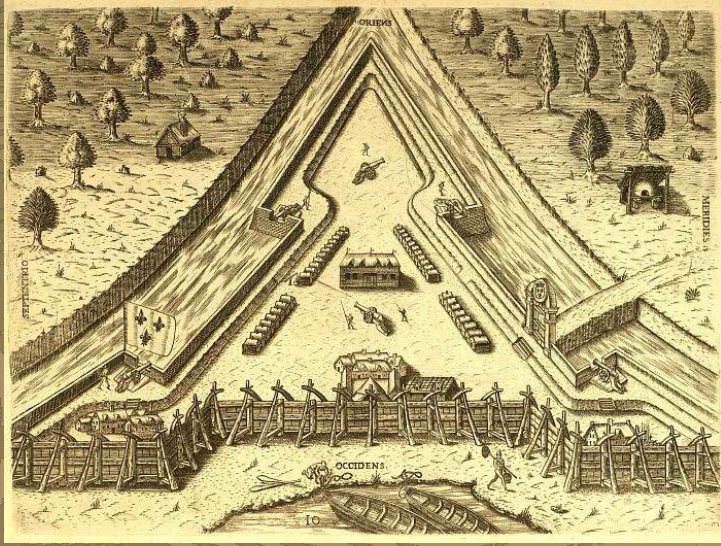
Flooding at Fort Caroline

Meeting Guidelines

- Questions will be addressed following this brief presentation
- Add questions in chat function at anytime
- Additional comments and questions may be submitted through the Planning, Environment & Public Comment (PEPC) website:

<https://parkplanning.nps.gov/FortCarolineRelocation>

Fort Caroline Memorial Exhibit



Existing Facilities



Fort Vulnerability

National Park Service
Park Facility Management Division



Fort Caroline Exhibit
National Flood Hazard Layer

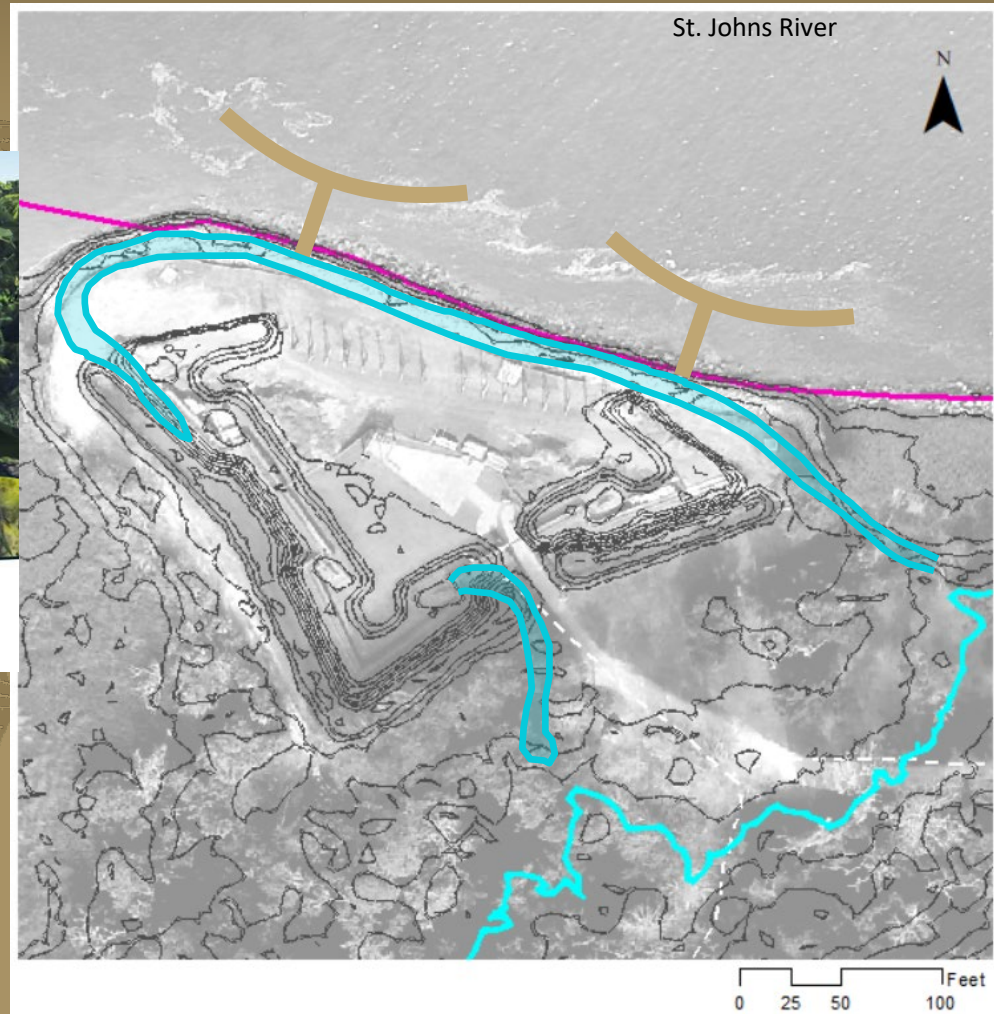
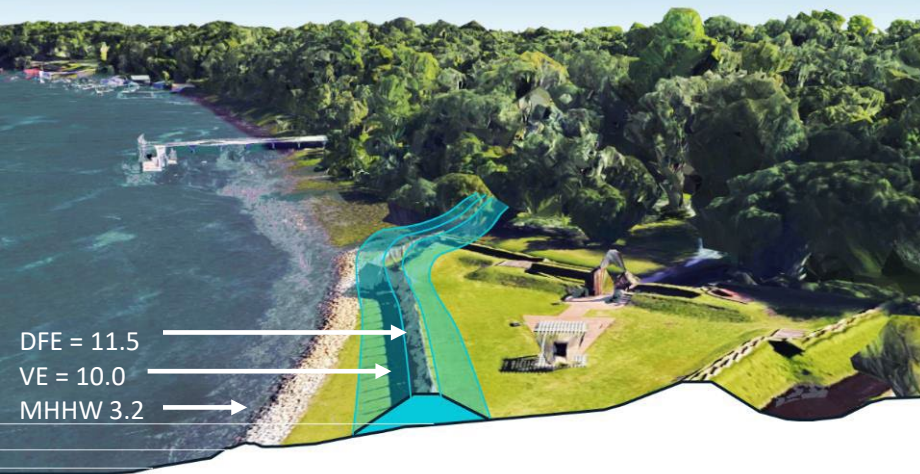
Fort Vulnerability



The Fort exhibit is vulnerable to sea level rise, hurricanes, annual flooding events, and coastal erosion.

Fort Caroline Adaptation Strategies

Landscape Protection



MHHW = Mean Higher High Water
(Mayport)
VE = Velocity Zone
DFE = Design Flood Elevation
(VE+18" SLR)

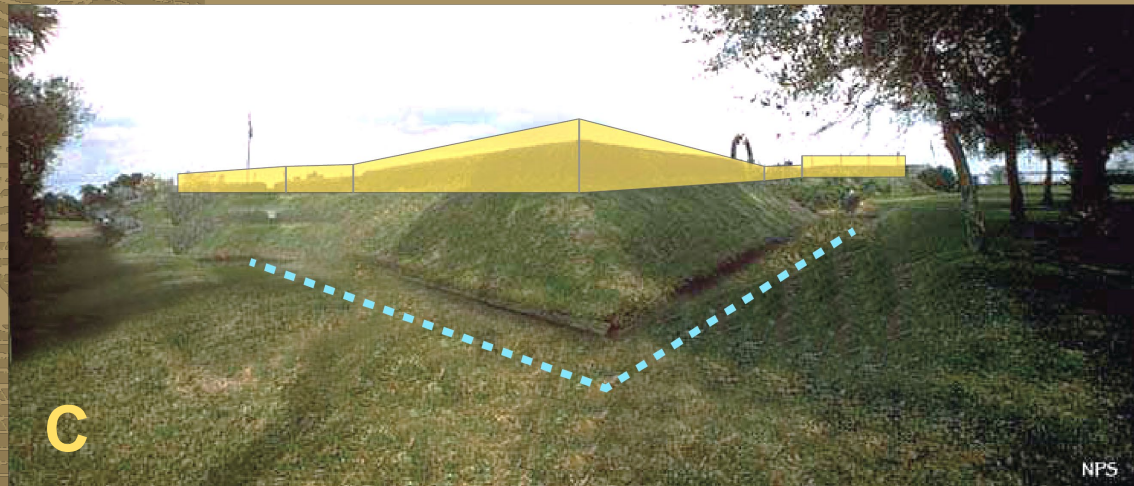
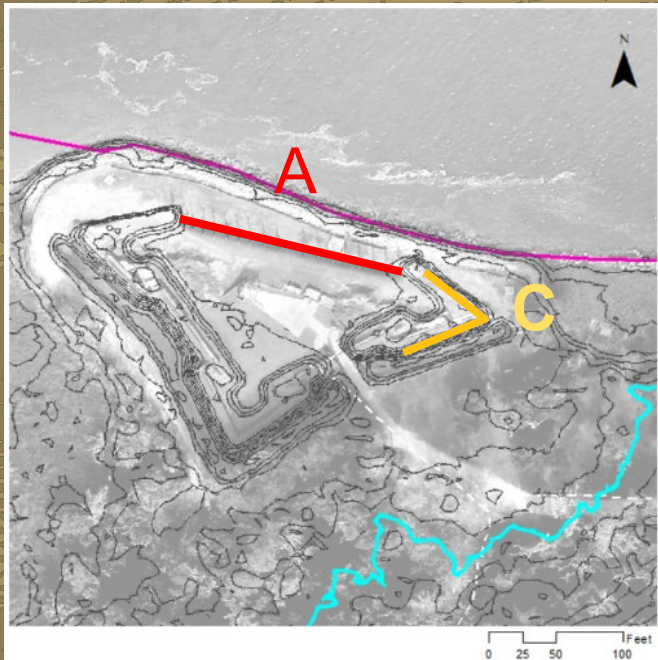
Fort Caroline Adaptation Strategies

Redesign

- Raise 2' to account for sea level rise
- Reconstruct with concrete
- Remove moat



Concrete Wall + 2' height increase

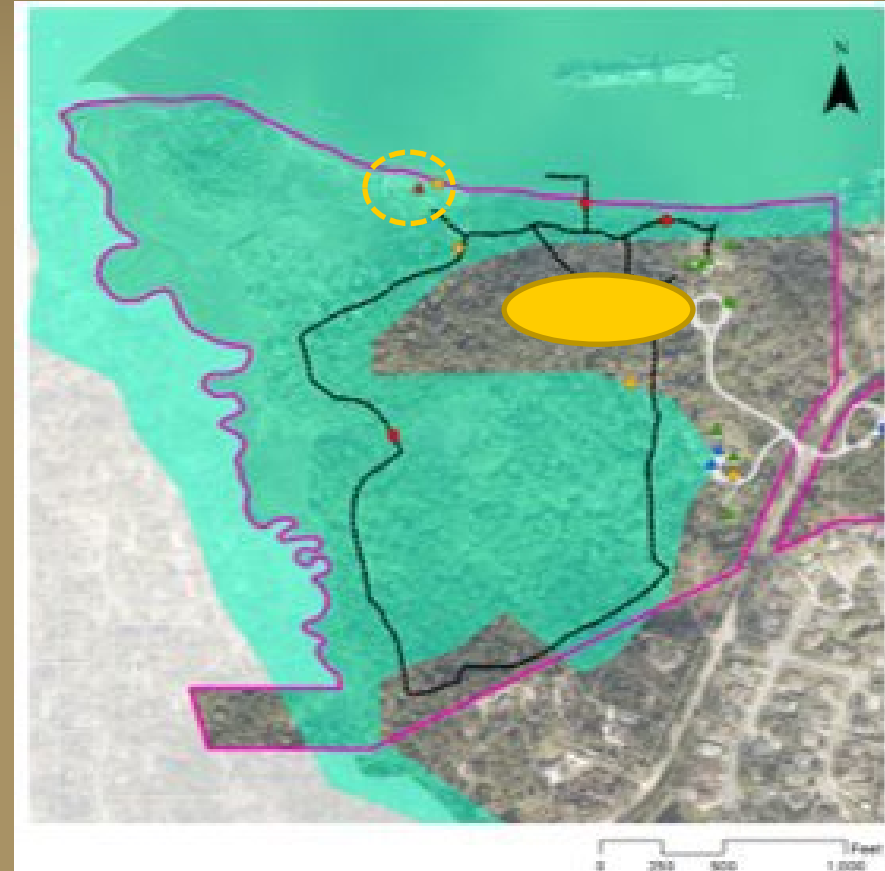


Concrete wall + 2' height increase + filled moat to prevent flooding

Fort Caroline Adaptation Strategies

Relocate- Preferred

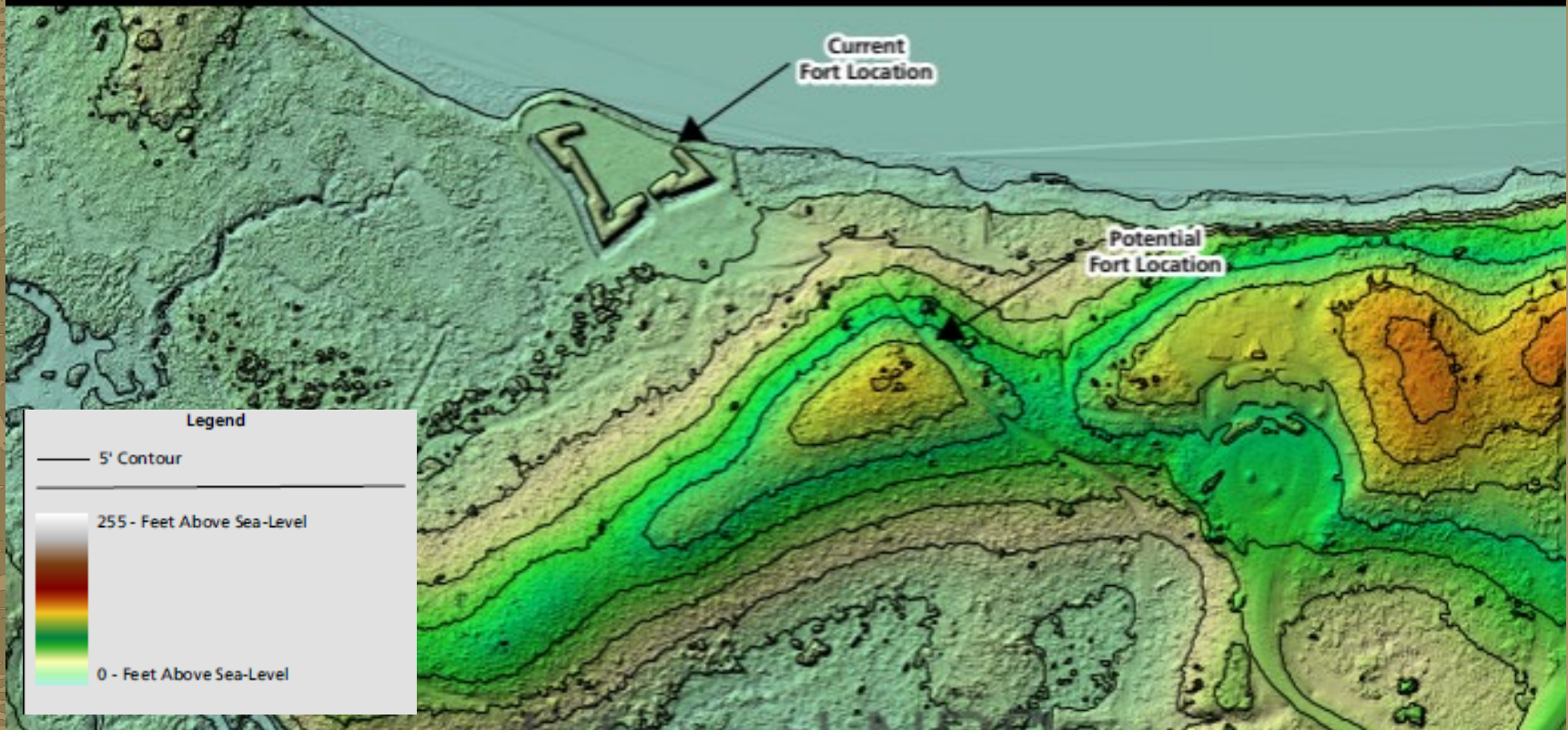
- Move ~300' southeast to higher elevation outside of the Category 3 hurricane storm surge area
- Remove trees and regrade
- Reconstruct Fort
- Allows the fort to be re-sited and wetlands to be reestablished in previous fort location



Fort Relocation

LiDAR Derived Shaded Relief Fort Caroline National Monument

Fort Caroline
National Park Service
U.S. Department of the Interior



Project Goals & Priorities

Purpose

This project will focus on relocating the Fort Caroline Memorial exhibit to:

- Move the exhibit out of the floodplain and reduce damage from chronic storm and tidal events to be more resilient and sustainable
- Improve visitor and employee safety by creating safer and more stable location for the exhibit
- Enhance visitor experience by providing new ADA accessible pathways, large gathering area, and views of the St. Johns River
- Continue to memorialize and interpret the French settlers' history

Need

- Without this project, flooding will continue to damage the Fort resulting in costly repairs and closures to the public.



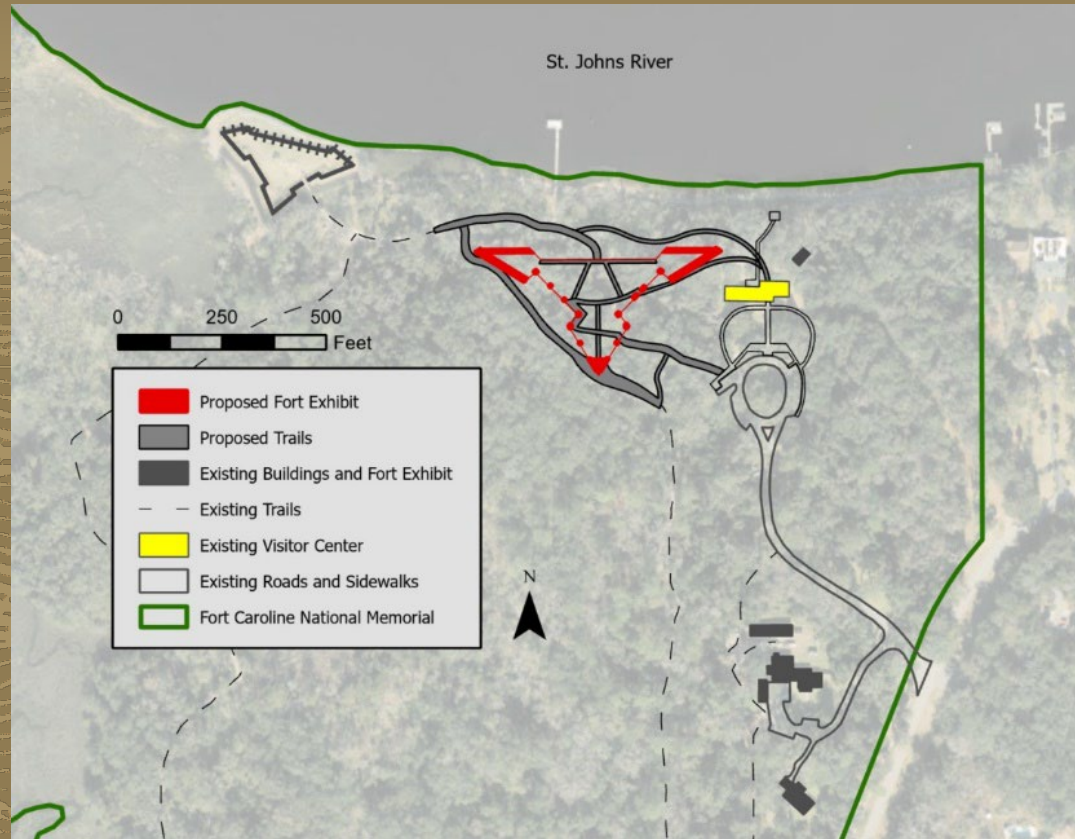
Proposed Improvement Project

The proposed memorial exhibit would be moved upland, closer to the Visitor Center (+14ft above sea level)

Would incorporate existing and new ADA accessible trails

Gathering site for larger groups
Elevated views of the St. Johns River

Timucuan exhibit to be removed, but interpretation at the park would continue with thoughtful consultation with tribes.



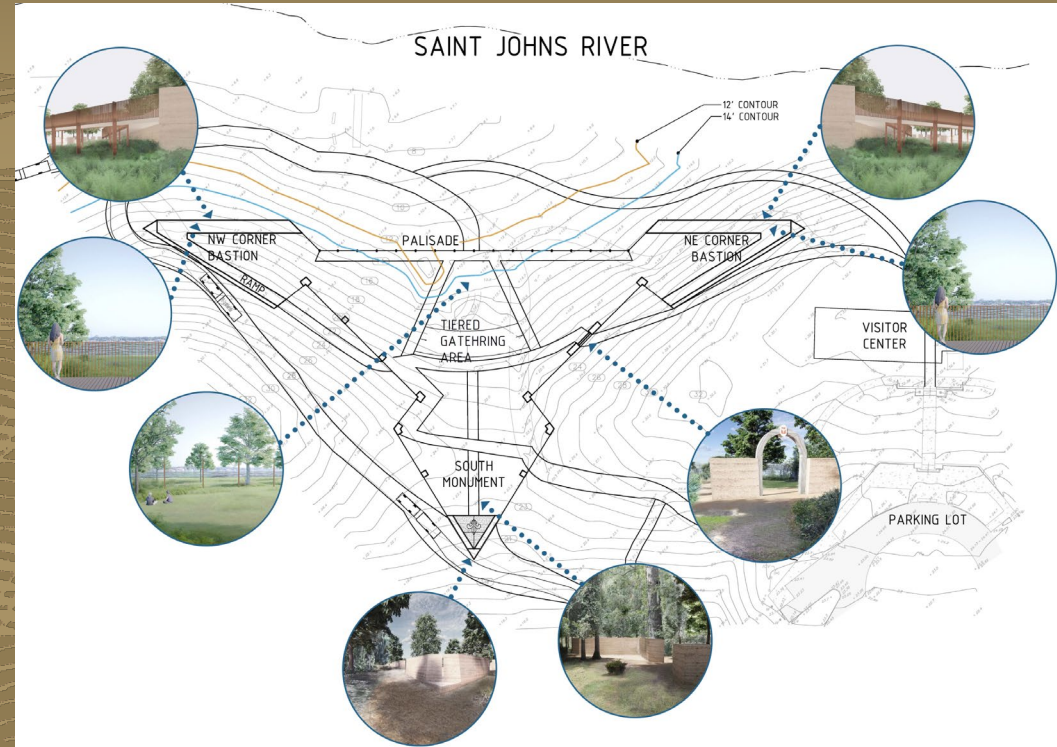
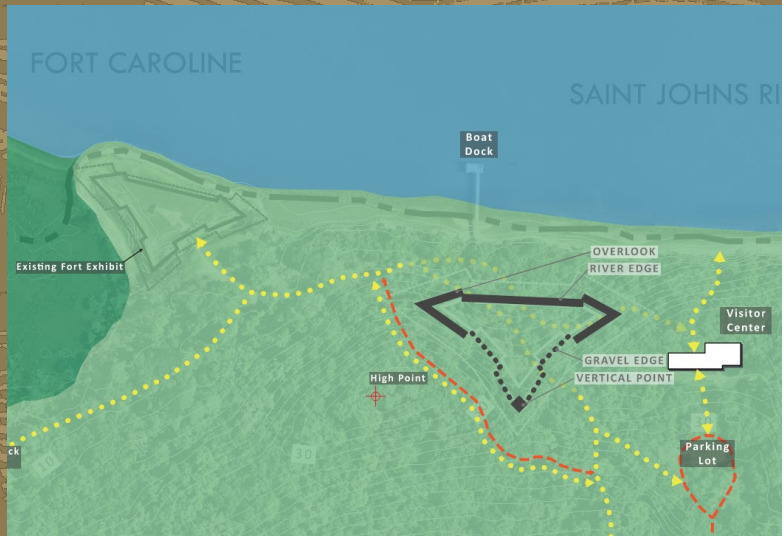
Proposed Improvement Project



- Removal of the exhibit structure
- Natural revegetation of area

Proposed Improvement Project

- Viewing platforms
- Tiered gathering area
- Monument to the French settlers
- Educational waysides



Proposed Improvement Project



Compliance and Public Reviews

The National Environmental Policy Act (NEPA) of 1969 is a national policy for protecting the environment and ensuring informed decision-making.

The National Historic Preservation Act (NHPA) of 1966 established a process to protect cultural resources.

NEPA and NHPA requires federal agencies to

- Analyze the impacts of federal actions
- Engage the public in the decision-making process

Impact Topics

The Environmental Assessment will provide a detailed analysis on the affected environment. Topics for analysis may include:

- Wildlife Habitat/ Wetlands
- Human Health and Safety
- Visitor experience
- ADA Accessibility
- Historic Properties

- What other topics should we consider? Add it to your comments!



Project Activities and Timeframe

Project Planning

- Civic engagement period July 7 through August 6, 2025

Upcoming project activities

- Review public comments and incorporate them into the NEPA process
- EA available for public to review and comment Winter 2025-2026
- Final NEPA Decision Document Winter 2026
- Construction planned for Winter 2026- Spring 2027

How to Comment

- Comments must be submitted online or postmarked by August 6, 2025 to receive consideration.
- Submit online comments to:

<https://parkplanning.nps.gov/FortCarolineRelocation>

Written comments may be mailed to:

Superintendent

Attn: Relocate Fort Caroline Memorial

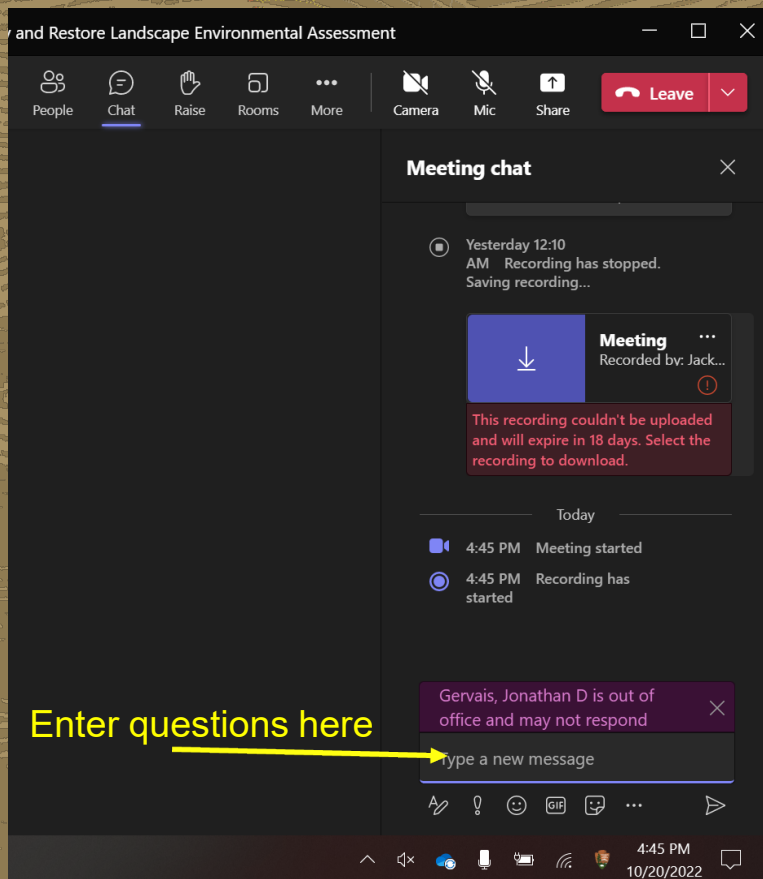
Timucuan Ecological and Historic Preserve 13165 Mount
Pleasant Rd, Jacksonville FL, 32225

You may also scan here to provide written comments:



Questions?

Please enter questions in the chat for the moderator to read



Additional comments and questions may be submitted through the Planning, Environment & Public Comment (PEPC) website:

<https://parkplanning.nps.gov/FortCarolineRelocation>

You may also scan here to provide written comments:



THANK YOU!

