

Katahdin Woods and Waters National Monument

General Management Plan
April 2026



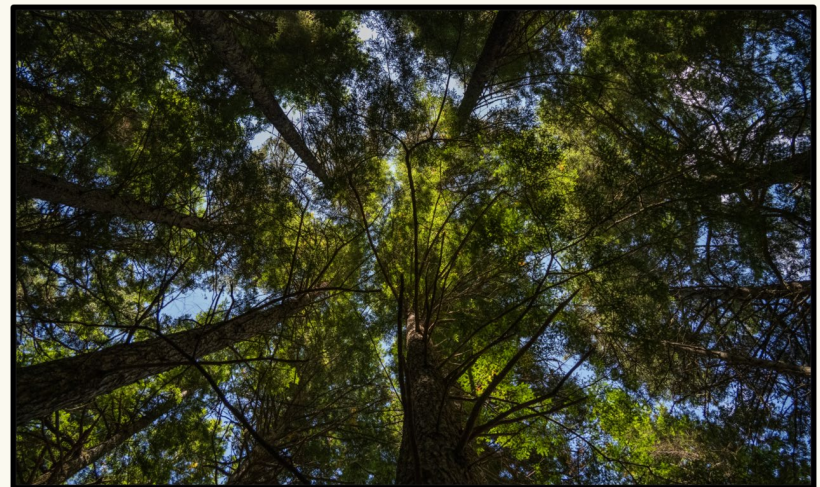
Welcome to the Katahdin Woods and Waters National Monument General Management Plan Public Scoping Meeting!

- We are beginning the next step in planning for the long-term future of Katahdin Woods and Waters National Monument (KAWW).
- We appreciate your interest and participation as we work together to shape the monument's management vision and direction.

Introduction to Katahdin Woods and Waters National Monument

KAWW protects a landscape shaped by glacial history, rich ecological systems, dark skies, and deep cultural significance to Wabanaki peoples.

As a newer national monument under NPS management, we have the opportunity to define its future management together.



What Is Public Scoping?

Scoping is our opportunity to listen.

Tonight's purpose is to introduce the general management plan (GMP), share early concepts, and invite your ideas and questions.

Your perspective helps shape the plan's direction before a draft is developed.



What Is a General Management Plan?

A GMP is the monument's long-range blueprint, typically looking 15–20 years ahead. It guides resource stewardship, visitor experiences, access, facilities, and operations.

For KAWW, the GMP will articulate a shared management vision and direction, developed through public engagement and consultation.



Where Are We in the Planning Process?

We have draft ideas for a management vision, desired conditions, and possible zoning concepts.

Public scoping is the next step. Your input will inform how those ideas evolve into the draft GMP that will go out for additional public comment.



How This Differs From the 2020–2021 Management Framework

- Prior work was foundational and highly valuable to understanding the needs of KAWW.
- GMPs are **statutorily required** as a component of NPS Planning Portfolio.
- Today, more complete staffing and management needs are better defined.
- The GMP will establish parkwide desired conditions, a clear zoning approach, and management strategies with a more comprehensive, long-term approach.



Draft Management Vision

A management vision is an overarching statement that describes the broad management philosophy of an NPS unit. It articulates a consistent direction for managing the park.

A vision statement summarizes the overall desired character for the park and describes the kind of place the park should be.



Themes of the Draft Management Vision

- KAWW protects a landscape of ecological integrity where free-flowing rivers and streams, evolving forests, and intact natural communities support iconic Maine wildlife and reflect thousands of years of people's presence on the landscape.
- Through strong collaboration with Wabanaki Tribes and local communities, KAWW fosters deep relationships with place and enhances connectivity across waterways, forests, and cultures.
- Visitors of all abilities find inspiration, discovery, and immersion in Maine's North Woods, experiencing natural sounds, expansive viewsheds, and dark night sky opportunities that strengthen the understanding, enjoyment, and stewardship of the monument's natural and cultural resources.



Draft Parkwide Desired Conditions

Desired conditions are statements of aspiration that describe resource conditions, visitor experiences and opportunities, and facilities and services that an agency strives to achieve and maintain in a particular area.

Desired conditions describe what a park should be like in the long-term future if management is successful.



Draft Parkwide Desired Conditions: Resource Management

- Forest resources reflect a diverse range of native species and ecosystem types, including rare and exemplary natural communities. Nonnative invasive species are limited and do not disrupt ecological functions.
- Native wildlife habitats are suitable, available, and connected within and across monument boundaries, with particular attention to habitat supporting rare or endangered species such as Canada lynx, wood turtles, and Atlantic salmon.
- Visitors can understand and appreciate the diverse array of cultural, historic, and archeological resources represented in the park.



Draft Parkwide Desired Conditions: Resource Management

- Waterways and wetlands provide excellent water quality and cold temperatures suitable to support native fisheries. Waterways and associated floodplains are unrestricted by human-made structures, ensuring adequate flood capacity and safe passage for fish and aquatic organisms.
- Native game species persist at levels that can sustain harvest.
- Viewscales are devoid of light pollution and other visual intrusions related to modern development that could interfere with dark sky viewing and other natural scenery.
- Soundscapes include natural sounds such as flowing water and birdsong with minimal anthropogenic noise pollution.



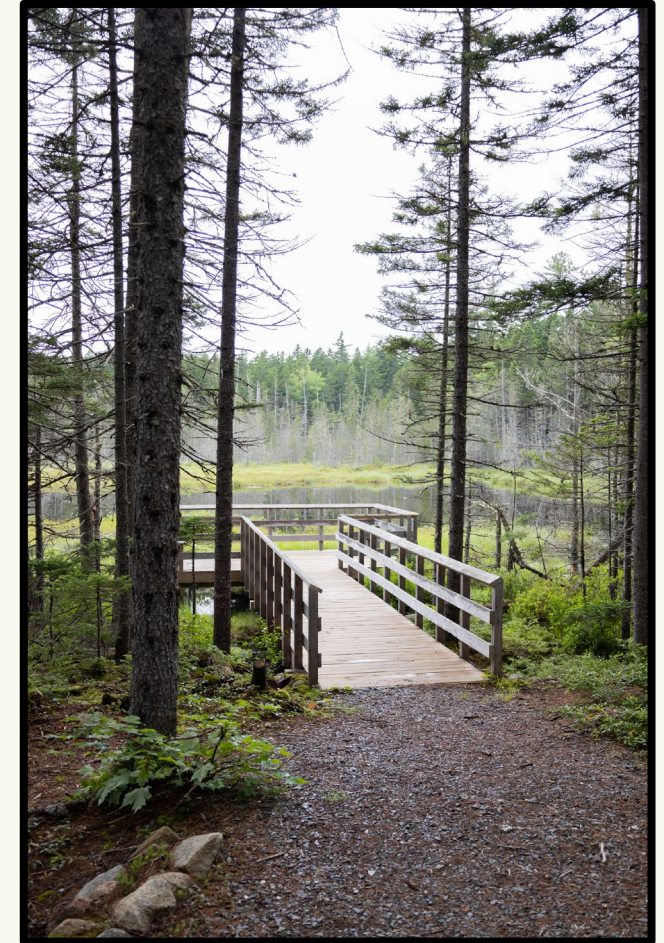
Draft Parkwide Desired Conditions: Visitor Experience

- Users of all abilities and outdoor skill levels have a diverse range of opportunities to experience and recreate in the monument, from physically challenging exploration to quiet learning, wildlife observation, and stargazing.
- The monument provides an immersive experience where users feel a strong sense of place for Maine's North Woods.
- Users have a variety of ways to experience the waterways and wetlands that define the monument.



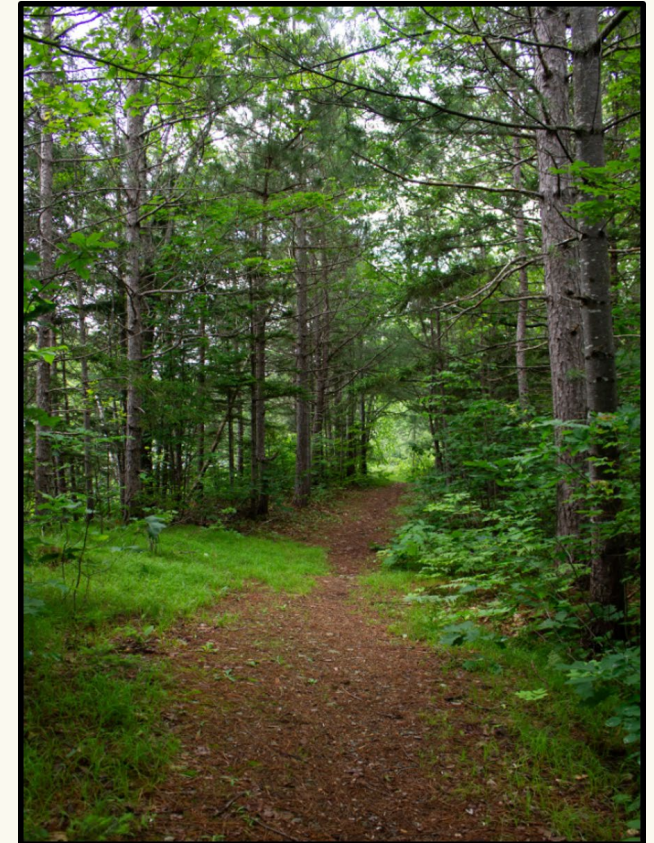
Draft Parkwide Desired Conditions: Types and Intensities of Development

- Visitor service and administrative infrastructure is adequate to support the monument's purpose and character as a largely undeveloped landscape.
- Facilities and infrastructure development is limited, sited to protect resources, operationally and environmentally sustainable, cost-effective over the long term, and supportive of future management needs.
- Land use decisions prioritize the protection of waterways, forest ecosystems, wildlife habitat, and culturally important places, including those associated with the Penobscot Nation and Maine's regional history.



Draft Parkwide Desired Conditions: Types and Intensities of Development

- Administrative and operational support facilities are in efficient locations that provide monument staff reasonable access to all monument lands.
- Visitor infrastructure (including roads, trails, trailheads, campsites, picnic areas, water access points, and portages) support safe, high-quality visitor experiences.
- The monument is supported by a workforce whose presence is essential to advance and sustain public safety, community relationships, effective partnerships, and the long-term stewardship of monument resources.
- Transportation infrastructure and management strategies minimize conflict between monument staff, recreational visitor user groups, and commercial through-traffic.



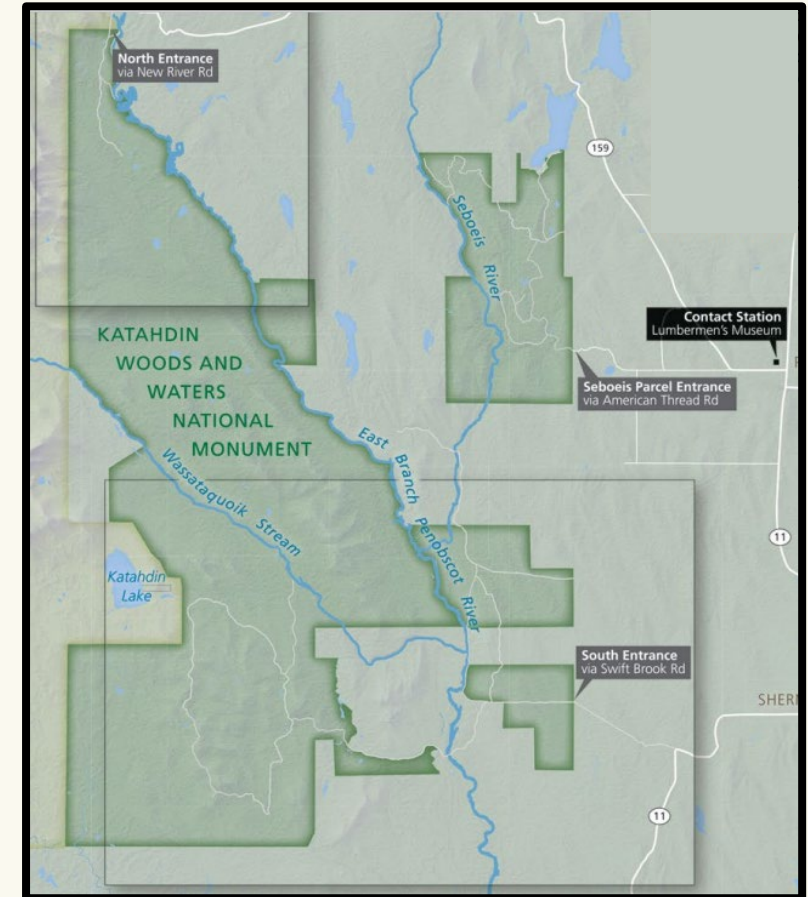
Zoning: What It Is and Why It Matters

Zones are management areas that define the fundamental purpose or character of an area.

Zoning helps park managers prioritize their activities across the park.

- Different areas require different types of protection.
- Visitors are not seeking the same opportunities in all areas.

A zoning scheme recognizes desired diversity across the landscape and is established in a way that can be realistically managed.



Zoning: Draft Concepts

- **Historic/Heritage Corridor:** Preserves cultural landscapes and travel routes, offering low-impact access and interpretation that connects visitors with the region's human history.
- **Backcountry:** Protects the most remote, undeveloped areas, providing solitude, primitive recreation, and immersive natural and cultural experiences with minimal facilities.
- **Frontcountry:** Offers the most accessible recreation and learning opportunities, with clear orientation and infrastructure that supports safe, self-guided exploration.
- **Park Support:** Concentrates essential visitor services, administrative functions, staff presence, and cultural programming in the most developed setting.

Overall Approach: Management emphasizes resource protection, meaningful visitor experiences, and the careful siting of facilities appropriate to each zone's character.



Zoning: How We Get to Management Strategies

- Zones differ in their level of access, development, and desired visitor experience.
- Desired conditions are developed for each zone, defining what the zone should feel like and what resources must be protected.

Zone-Specific Desired Conditions → Management Strategies

What we want

How we get there



Example Management Strategies

- Develop a trail plan that matches desired visitor experiences and supports sustainable maintenance.
- Expand interpretive offerings, including waysides and ranger-led programs, to share diverse cultural and natural stories.
- Monitor and manage invasive species to protect native ecosystems and habitat connectivity.
- Assess water crossings and infrastructure to improve aquatic passage and flood capacity.
- Collaborate with Wabanaki partners and regional land managers on shared stewardship priorities.
- Site new infrastructure carefully to minimize visual impact and protect sensitive resources.

What are your ideas? What would you like to see?



Engagement Opportunities

- **Virtual Public Meetings:** April 29 & 30, 2026 (5–6 p.m. ET)
- **Open House (Patten):** April 29–30, 2026
- **In-Person Meetings:** May 5 & 6, 2026 (5:30–7:30 p.m. ET)

Details and materials will be posted at: <https://parkplanning.nps.gov/KAWWGMP>



We want to hear from you!

We invite your thoughts on:

- the emerging management vision
- desired conditions for resources, visitor experiences, and types and intensities of development within the monument
- the zoning approach and what matters most in different parts of the monument
- opportunities, concerns, and ideas

Your input will shape how the plan advances.



Please let us know...

- What experiences in KAWW are most important to you? What kind of experiences do you want future visitors to have when they come to the monument?
- What are your thoughts on the draft desired conditions and management zones for the monument? Is anything missing?
- What activities, wayfinding tools, interpretive/educational material, and services would make you feel more welcome, safe, or satisfied with your experience in the monument?
- Other thoughts you'd like to share with the project team?



You can comment in several ways:

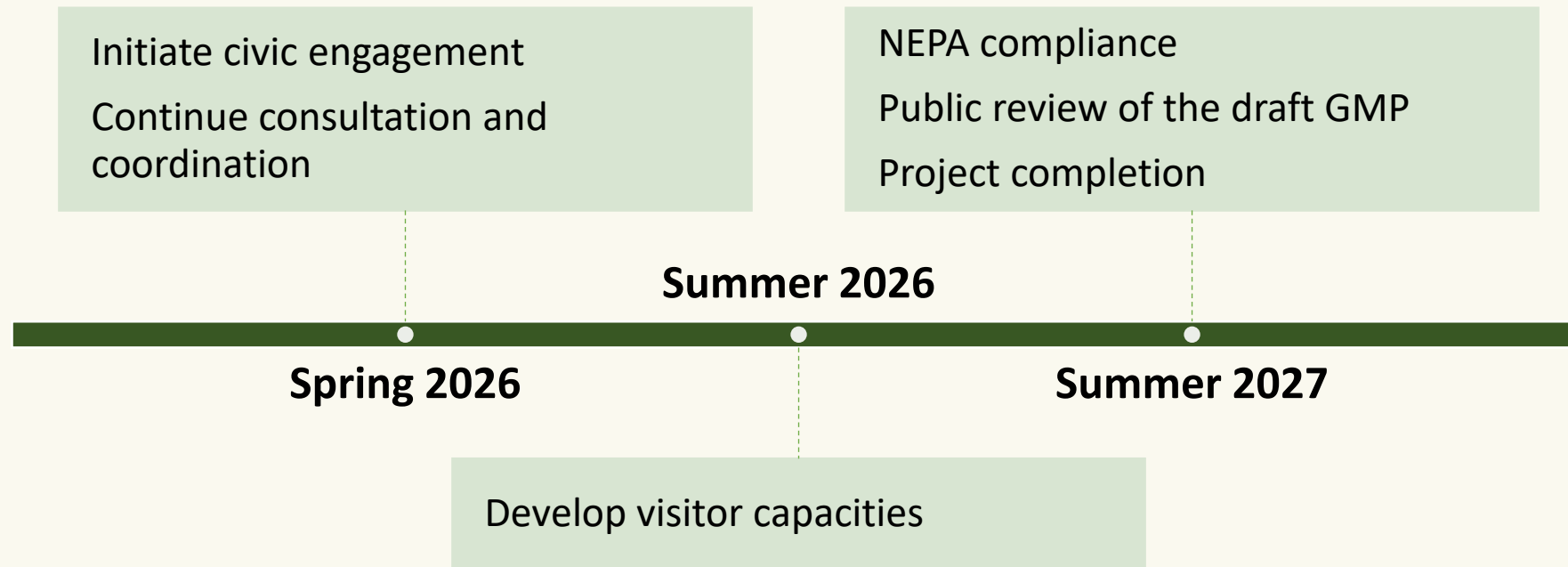
- On the project website: <https://parkplanning.nps.gov/KAWWGMP>
- During public meetings by comment card
- By email: KAWW_GMP@nps.gov

We encourage thoughtful comments on the vision, desired conditions, zoning concepts, and any opportunities or issues you want the NPS to consider.



Next Steps for the Team

After the comment period closes, we will review and analyze all feedback, and refine the management vision, desired conditions, and zoning based on your ideas!



Thank you



We appreciate your time, interest, and input.

Your voice is essential to shaping the future of Katahdin Woods and Waters National Monument.

We look forward to hearing from you!

