

**National Park Service
U.S. Department of the Interior**

**Pictured Rocks National Lakeshore
Accessibility Self-Evaluation and Transition Plan**

Michigan

March 2026

Template updated October 23, 2024

This page intentionally blank.

EXECUTIVE SUMMARY

Pictured Rocks National Lakeshore staff are dedicated to serving all park visitors to help them find meaning in the resources of the park and its stories. Recently, park staff embarked on a journey to ensure that key experiences are available to all visitors, regardless of race, nationality, socioeconomic status, or ability. Park staff conducted an accessibility self-evaluation of park facilities, services, activities, and programs and drafted a transition plan that identifies opportunities for improvement and outlines critical steps towards implementing responsive solutions parkwide.

This accessibility self-evaluation and transition plan (SETP) resulted from the work of a National Park Service (NPS) interdisciplinary team, including planning, design, and construction professionals and interpretive, resource, visitor safety, maintenance, and accessibility specialists. The team developed conceptual site plans identifying the location of accessibility barriers and opportunities for each assessed park area and crafted an implementation strategy to assist park staff in scheduling and performing required actions and documenting completed work. The team also assessed park policies, practices, communication, and training needs to improve access to elements of the park that lie outside of direct physical and programmatic access. The goals of the SETP are to (1) document existing park barriers to accessibility for people with disabilities; (2) provide an effective approach for upgrading facilities, services, activities, and programs; and (3) instill a culture around creating universal access.

PHYSICAL ACCESSIBILITY

Pictured Rocks National Lakeshore staff have made significant strides to improve physical accessibility throughout the park. Paved and mostly level trails lead visitors to scenic overlooks and waterfalls, allowing everyone to experience the park's dramatic sandstone cliffs and Lake Superior vistas. Accessible boardwalks and ramps provide easier entry to popular areas such as Miners Castle and Sand Point Beach. Many visitors come to enjoy the shoreline, and park staff have installed beach access mats at select locations to assist visitors using wheelchairs or strollers in reaching the water's edge.

Recurring accessibility challenges have been identified in parking areas, outdoor recreation routes, hiking trails, and visitor information points such as kiosks, bulletin boards, interpretive panels, and waysides. Common issues include surfaces that are not firm and stable, slopes exceeding allowable standards, items placed outside reach range, and features that are difficult or heavy to operate. Restroom facilities often do not meet required accessibility standards, and amenities for picnicking and camping—such as tables, fire rings, and water spigots—sometimes lack proper access routes and clearance. Some signage is missing, illegible, or lacks sufficient or correctly placed information.

Park staff have opportunities to enhance access to unique experiences. Improving access to boat launches along Lake Superior would allow visitors with mobility disabilities to enjoy the park's stunning shoreline from the water. Updating viewing areas at popular overlooks could provide dramatic scenic vistas for all visitors.

PROGRAMMATIC ACCESSIBILITY

Pictured Rocks National Lakeshore staff have made improvements to programmatic accessibility in recent years. On the park's website, visitors can find virtual experiences such as videos and photo tours of scenic areas, many of which include open captions. These alternatives help visitors who cannot access certain locations in person—such as remote waterfalls or rugged backcountry trails—still experience the park's unique features.

Recurring findings related to program accessibility have been identified for park publications, waysides, exhibits, and interpretive programs. Common issues include waysides with font and contrast challenges that make them difficult to read, limited availability of alternative formats, lack of assistive listening devices, few tactile exhibits, and minimal audio description for tours.

Significant opportunities for improvement include adding tactile exhibits at the visitor center to enhance interpretive displays and expanding audio-described content for videos and programs. Additionally, improving trailhead signage throughout the park would provide visitors with clear information about trail conditions, enabling them to make informed decisions about accessibility.

This page intentionally blank.

CONTENTS

Executive Summary	3
Physical Accessibility	3
Programmatic Accessibility	4
Contents	6
Introduction	9
Accessibility Self-Evaluation and Transition Plan	10
Accessibility Self-Evaluation and Transition Plan Process	11
Implementation of the Plan	14
Implementation Strategy for Pictured Rocks National Lakeshore	15
Park Areas Assessed	15
Implementation Strategy for Park Areas Assessed	17
Munising Falls Visitor Center	18
Munising Falls Visitor Center Conceptual Site Plan	20
Sand Point Beach	21
Sand Point Beach Conceptual Site Plan	23
Sand Point Marsh Trail.....	24
Sand Point Marsh Trail Conceptual Site Plan	26
USCG Boat House	27
USCG Boat House Conceptual Site Plan.....	29
Educational Shed (“Ed Shed”)	30
Educational Shed Conceptual Site Plan	32
Miners Falls	33
Miners Falls Conceptual Site Plan.....	35
Miners Castle Information Center	36
Miners Castle Information Center Conceptual Site Plan.....	38
Miners Beach	39
Miners Beach Conceptual Site Plan	41
Little Beaver Lake and Campground	42
Little Beaver Lake and Campground Conceptual Site Plan	44
Lake Superior Overlook	45
Lake Superior Overlook Conceptual Site Plan	47

Log Slide Overlook	48
Log Slide Overlook Conceptual Site Plan	50
Hurricane River	51
Hurricane River Conceptual Site Plan	53
Au Sable Light Station	54
Au Sable Light Station Conceptual Site Plan.....	55
Grand Sable Dunes Parking	56
Grand Sable Lake Conceptual Site Plan.....	58
Grand Sable Visitor Center	59
Grand Sable Visitor Center Conceptual Site Plan.....	61
Pictured Rocks National Lakeshore Programs	62
Policies, Practices, Communication, and Training	64
Conclusion	66
Appendix A: Accessibility Laws, Standards, Guidelines, and NPS Policies	
Applicable to Pictured Rocks National Lakeshore	A-1
Laws	A-1
NPS Director’s Orders and Management Policies	A-1
Guidelines	A-2
Appendix B: Resources	B-1
Appendix C: Contributors	C-1
Pictured Rocks National Lakeshore Accessibility Self-Evaluation and Transition	
Plan March 2026	

This page intentionally blank.

INTRODUCTION

Since 1916, the National Park Service has preserved, unimpaired, the natural and cultural resources and values of the national park system while providing for the enjoyment, education, and inspiration of current and future generations.

Many national parks were founded because of their stunning views, extreme and unique geography, challenging and sensitive natural environments, and historic and fragile structures. Pictured Rocks National Lakeshore and other parks exist because of their history and resources. The NPS mission balances protection of resources (natural and cultural) with visitor enjoyment. Facilities, services, and programs were designed and built in parks to accommodate visitors and help them better understand each park purpose and significance.

However, many facilities were constructed before the passage of laws and policies requiring the National Park Service to provide access to the widest cross section of the public and to ensure compliance with the Architectural Barriers Act of 1968, the Rehabilitation Act of 1973, the Equal Employment Opportunity Act of 1972, and the Americans with Disabilities Act of 1990. The accessibility of commercial services in national parks is also governed by applicable federal laws. After more than 100 years of operation, the National Park Service continues to work toward a more inclusive environment.

Visitors today have unique needs and expectations, and the agency must adapt to meet changing demands. Modern scientific research and visitor trend analysis provide new insights into accessibility opportunities and challenges in the national park system. According to 2020 Center for Disease Control data, there are approximately 61 million people with disabilities in the United States, and this number is expected to rise in the coming years as more people reach retirement age (65 and older). This information helps the National Park Service understand changing visitation patterns, the nexus between resource stewardship and accessibility, and the impacts of managing visitors, resources, and infrastructure with the reality of unpredictable funding. Planning can help identify solutions to challenges and provide a trajectory full of opportunity for current and future visitors. The National Park Service is committed to making park facilities, services, programs, and employment opportunities accessible to all people, including those with disabilities.

Pictured Rocks National Lakeshore existing general management planning documents continue to provide relevant guidance, which may be supplemented through development of additional planning documents such as this one. The accessibility SETP is a component of the park's planning portfolio. This plan documents park barriers to accessibility for people with disabilities and provides an effective approach for upgrading park facilities, services, and programs. In addition, the plan helps inform management decisions regarding project prioritization, funding, and compliance.

ACCESSIBILITY SELF-EVALUATION AND TRANSITION PLAN

The creation of a transition plan is mandated by regulations under the Rehabilitation Act of 1973 as they apply to the US Department of the Interior, which states that “No otherwise qualified handicapped individual in the United States . . . shall, solely by reason of his handicap, be excluded from participation in, be denied the benefits of, or be subjected to discrimination under any program or activity receiving federal assistance.” The act requires parks to document architectural barriers and identify solutions, time frames, and responsible parties to improve and increase accessibility.

This plan was prepared to provide Pictured Rocks National Lakeshore staff with a tool for addressing overall needs associated with making the park accessible when viewed in its entirety. The plan is based on an understanding of key park experiences and establishes a methodical process that identifies, prioritizes, and outlines improvements to park accessibility. The plan proposes strategies for implementation over time and in a manner consistent with park requirements and protocols.

ACCESSIBILITY SELF-EVALUATION AND TRANSITION PLAN PROCESS

The process for creating a SETP involves seven steps:

STEPS OF THE SETP PROCESS



1. **Identify Key Park Experiences and Park Areas:** The interdisciplinary team began by identifying the key experiences available to visitors at the park. Key park experiences, which help determine the park areas to assess in step 2, are iconic and important experiences for visitors to understand the purpose and significance of the park. Park legislation is the foundation for key park experiences, which are identified through park purpose, significance, interpretive themes, and programs (available in the park's foundation document at npshistory.com/publications/foundation-documents/piro-fd-2016.pdf). Key Park experiences ensure that planned improvements are prioritized to best increase overall access to park experiences.

The key park experiences identified for Pictured Rocks National Lakeshore include the following:

- Geomorphic Processes and Associated Features

Experience the dynamic processes that shaped Pictured Rocks National Lakeshore over time and created the colorful geologic features found throughout the park.

- Access to Diverse Recreational Opportunities

Experience the multitude of opportunities available around the year to engage with the park's resources on Lake Superior and on land.

- Visual Resources

Experience the stirring views of Pictured Rocks National Lakeshore's ecology that are available across all four seasons, both during the day and at night.

- Wilderness

Experience the tranquil landscape of the Beaver Basin Wilderness that sustains a rich assemblage of flora and fauna and supports opportunities for both recreation and reflection.

- Ecosystem Integrity

Experience the lands where two forest ecosystems, boreal and northern hardwood, interspersed with wetlands and streams, come together to create ecosystems that provide habitat for birds and mammals and nurture a variety of wildflowers.

- Abundance and Quality of Water Resources

Experience both flowing and still water sources, fed by both occasional rains and significant snowfall events, that support natural resources and recreational opportunities.

- Maritime Heritage Resources

Experience the thousands of years of human use of Lake Superior and its shoreline as revealed through the park's historic buildings and cultural landscapes.

- Collaborative Conservation

Experience the management vision that brings together government agencies, adjacent communities, industries, and partners to promote shared goals of education, information sharing, land use planning, and research.

To prepare for step 2, the team then listed all developed areas of the park in which visitors have access.

2. **Determine Park Areas to Assess:** In some instances, not all park areas can be assessed during this process due to time and funding constraints. Therefore, the interdisciplinary team determined which park areas to assess based on the number of key park experiences, visitation level, diversity of activities and programs, distribution, and unique characteristics. The areas selected for assessment provide the best opportunities for the public to access all key park experiences. Areas not assessed will be assessed and improved as part of future facility alterations or as components of a future planned construction project.
3. **Identify Facilities, Services, and Programs in Each Park Area:** The team identified all facilities, services, and programs in each park area to ensure that all physical and programmatic visitor amenities in each park area were reviewed for accessibility. The

comprehensive lists of facilities, services, and programs were the basis for conducting assessments and documenting barriers.

4. **Conduct Accessibility Assessment:** On-site, the interdisciplinary assessment team assessed each park area and identified physical and programmatic barriers to accessibility. The team then reviewed possible solutions and explored options to provide universal access. In some cases, programmatic alternatives needed to be examined because eliminating physical barriers is not always possible due to historic designations, environmental concerns, topography, or sensitive cultural and natural resources. Therefore, a range of programmatic alternatives was considered to provide access to key park experiences for as many visitors as possible.
5. **Draft Transition Plan:** Following the assessment, the team added field results to an implementation strategy table and drafted conceptual site plans to display the locations of barriers and opportunities. An implementation strategy can be complex because of a large range of coordination efforts associated with scheduling accessibility improvements. All improvement efforts need to consider park activities and operational requirements to determine how and when to implement a solution. While some changes can be done quickly at little or no cost, others may be integrated into existing projects or planned as separate projects, and more complex solutions may require advanced planning and requests for funding. Based on these considerations, the team identified an implementation time frame and a responsible park staff member for each barrier and solution. Implementation time frames are based on NPS staff's ability to complete the improvements within normal scheduling of park operations and planned projects and are as follows:
 - a. Immediate (0–1 year)
 - b. Short term (1–3 years)
 - c. Mid-term (3–7 years)
 - d. Long term (longer than 7 years)

6. **Conduct Public Involvement:** Public involvement occurs at the draft stage of the transition plan; however, it is recommended that at the beginning of the SETP process, park staff initiate public outreach efforts with organizations representing people with disabilities. The draft plan will be released for a 30-day period to solicit input from the public, including people with disabilities and organizations that represent people with disabilities, to provide comments and thoughts on whether the document represents a reasonable review of the park's barriers and a feasible and appropriate strategy for overcoming the barriers.
7. **Finalize Transition Plan:** After the comment period has closed, park staff will analyze all comments to determine if any revisions to the plan are necessary. Those revisions will be made before the implementation strategy is finalized. Once finalized, a notification will be sent to the public to announce the plan's availability.

IMPLEMENTATION OF THE PLAN

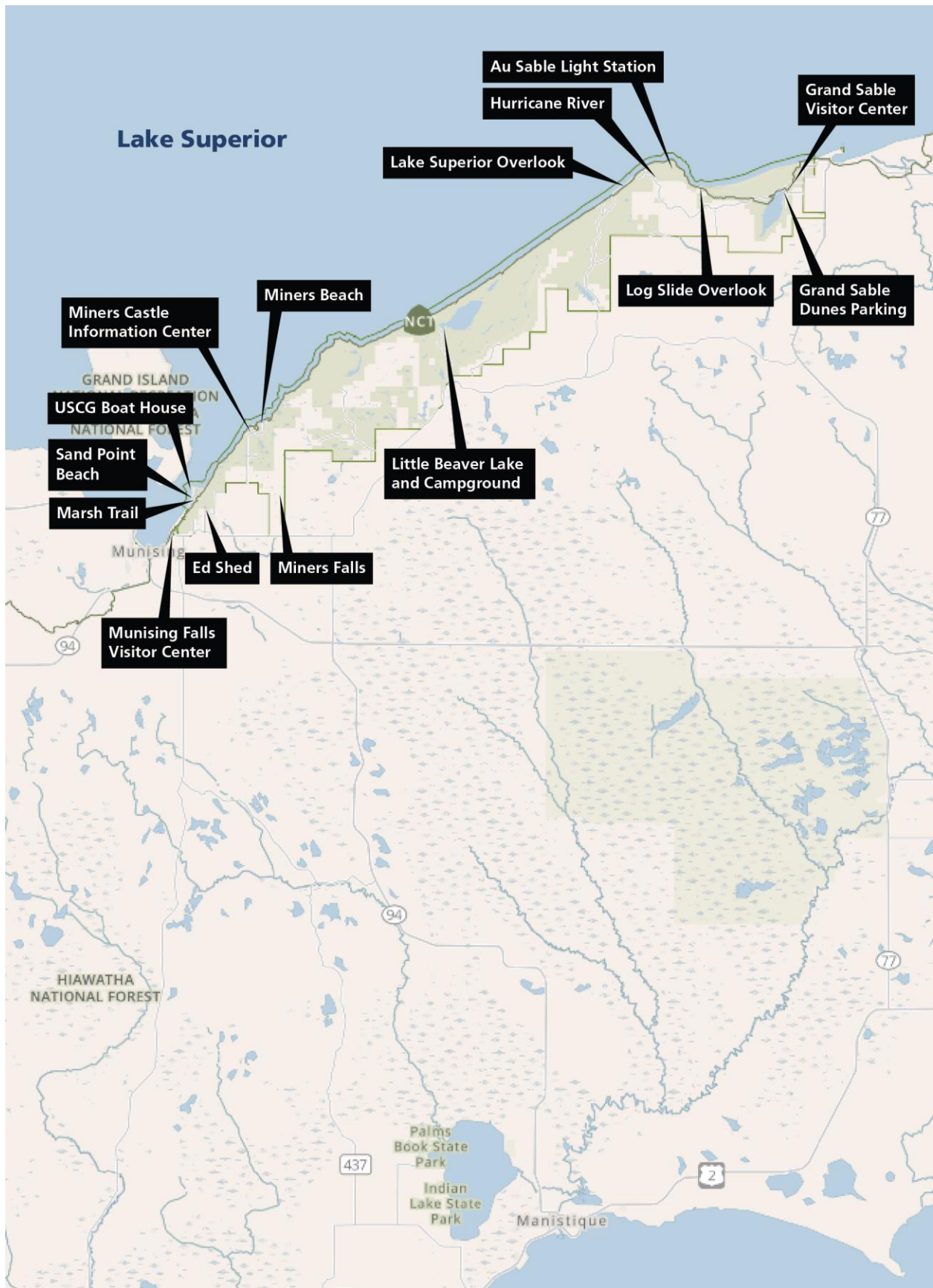
The park superintendent is responsible for implementing and integrating the accessibility self-evaluation and transition plan, and the accessibility coordinator assists the superintendent by documenting improvements, keeping the plan updated, and communicating to park employees. It's recommended that park staff employ trained consultants and involve the disability community to assist with addressing accessibility improvements to ensure that design and implementation meet the needs of visitors with disabilities. Creating parkwide accessibility requires staff awareness, understanding, and appropriate action. Because of fiscal constraints and limited park resources, staff will need to determine which improvements will benefit the greatest number of visitors with disabilities. Suggested implementation time frames and relative costs need to be factored into all accessibility investment decisions.

IMPLEMENTATION STRATEGY FOR PICTURED ROCKS NATIONAL LAKESHORE

PARK AREAS ASSESSED

The interdisciplinary team assessed the following park areas for accessibility during the planning effort.

- Munising Falls Visitor Center
- Sand Point Beach
- Sand Point Marsh Trail
- US Coast Guard Boat House
- Education Shed
- Miners Falls
- Miners Castle Information Center
- Miners Beach
- Little Beaver Lake Campground
- Lake Superior Overlook
- Log Slide Overlook
- Hurricane River Campground
- Au Sable Light Station
- Grand Sable Dunes Parking
- Grand Sable Visitor Center



IMPLEMENTATION STRATEGY FOR PARK AREAS ASSESSED

The Architectural Barrier Act requires that any building or facility designed, constructed, altered, or leased with federal funds be accessible and usable by any individuals with disabilities. The Uniform Federal Accessibility Standards and the Architectural Barriers Act Accessibility Standards (ABAAS) were adopted for federal facilities in 1984 and 2006, respectively. Subsequently, in 2011, standards for recreational facilities were incorporated into ABAAS as chapter 10. In 2023, NPS Policy Memorandum 23-01 implemented the most current International Code Council (ICC) and American National Standards Institute (ANSI) building codes to supersede ABAAS for building standards. The Architectural Barriers Act Accessibility Standards will continue to provide scoping and technical requirements for outdoor developed areas.

Depending on the date of a building's construction or alteration, different design standards apply. The interdisciplinary team used checklists that include ABAAS, ICC, and ANSI Standards to conduct the transition plan facility assessments. Although a barrier may be identified by the current assessment for improvement, facilities are only required to follow the standard in place at the time of construction and/or alteration. Therefore, barriers may not be in violation of accessibility standards. However, any renovation or upgrade of that building is required to meet the most current standard at the time of work. In addition, Harpers Ferry Center Programmatic Accessibility Guidelines for National Park Service Interpretive Media were followed for facility and program assessments.

This document does not include strategies for transitioning employee workspaces to be accessible. In the event that an employee with a disability is hired by Pictured Rocks National Lakeshore, the supervisor and employee will discuss the employee's needs. The supervisor will then determine what accommodations are reasonable in the given work environment and determine a plan of action to meet those needs.

For each park area, this document provides an overview of findings and recommended solutions in a brief narrative and bulleted list and provides corresponding conceptual site plan(s) that illustrate the locations of proposed improvements. For details on each barrier, solution, and time frame, see the companion implementation strategy table at [\[insert URL\]](#). It is important to understand that the site plans and recommendations are conceptual and will require further design development and historic and environmental compliance before construction. SETPs are not to be used as a section 106 compliance review submittal. Consult with cultural and natural resource staff before proceeding with recommended actions. During the implementation phase, the interdisciplinary team must reassess the project site conditions; refer to ICC, ANSI, and ABAAS, as relevant; and consult with the local disability community to ensure that specific design and programmatic solutions are correctly addressed.



MUNISING FALLS VISITOR CENTER

The Munising Falls Visitor Center is a single-story building on Pictured Rocks National Lakeshore's western end. A large, paved parking lot, located right off Sand Point Road, is directly west of the visitor center building. Three accessible parking spaces, including one van-accessible space, are provided in the parking lot. A network of concrete sidewalks connects the parking lot to the visitor center. A small wooden backless bench and two interpretive waysides are installed in front of the visitor center. Parallel to the bench and the waysides are a small wooden bulletin board, with a map of the park and informational flyers posted on it, and two trash receptacles. A separate building, containing accessible men's and women's restrooms with flush toilets, is parallel to the visitor center. A drinking fountain is installed outside of the restrooms. A larger map of the park and a sign with information on park fees are affixed to the visitor center building's exterior. A paved path from the visitor center to Munising Falls is currently closed following a storm and will be accessible once repairs are completed. A section of the visitor center building's interior is set aside as a bookstore. The Munising Falls Visitor Center is open year-round.

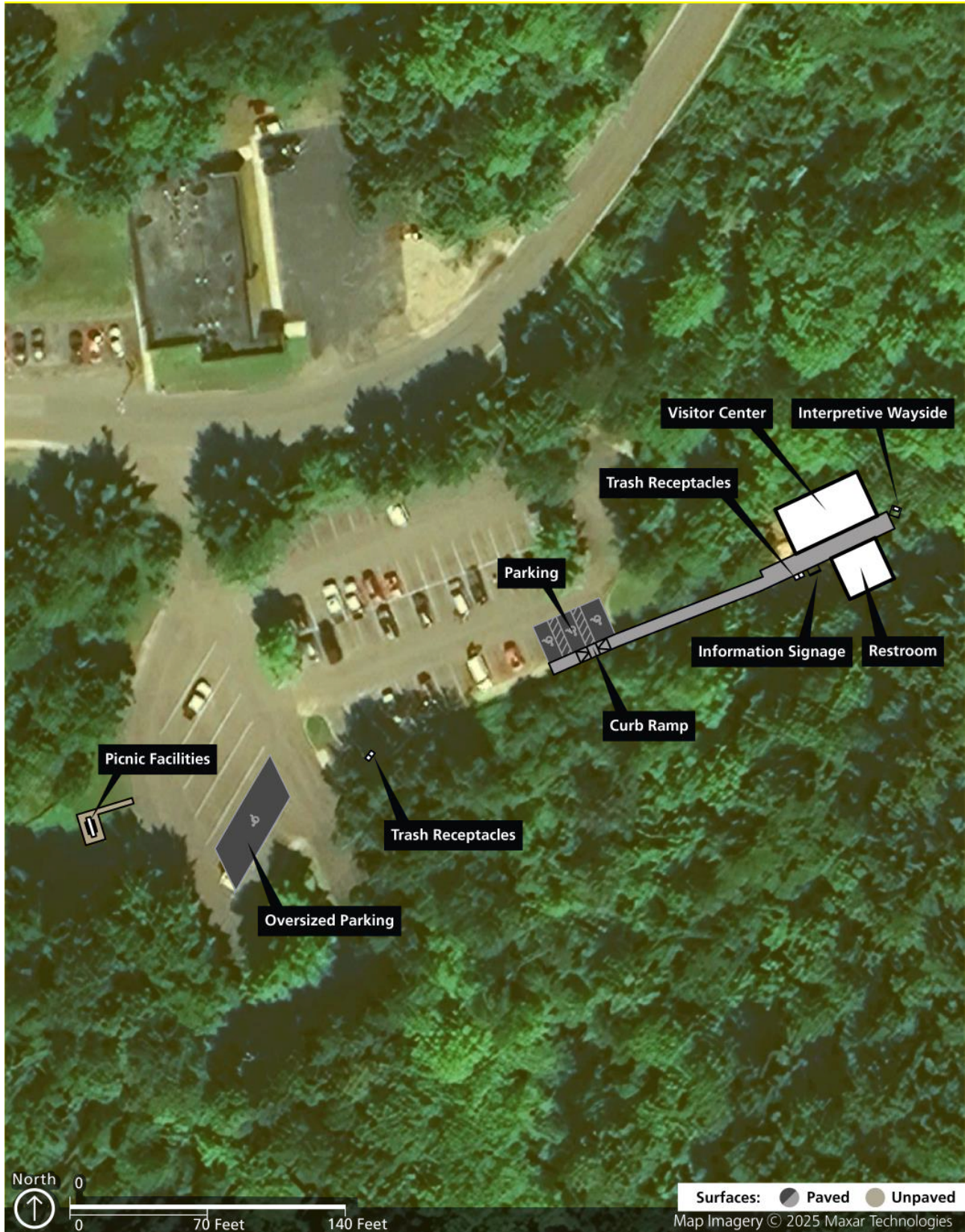
Proposed accessibility improvements at Munising Falls include the following:

- **Parking:** Provide an accessible parking sign to designate each accessible parking space. Provide van-accessible signage on the van-accessible spaces. Move the curb ramp so that it's outside of the access aisle. Ensure that the curb ramps retain running slopes of a maximum of 8.33% and side flare slopes a maximum of 10%. Provide level landings with a 2% maximum slope in all directions above the curb ramps measuring a minimum of 36 inches in length and as wide as the curb ramp. Provide one oversized parking space to be accessible. Each space should be a minimum of 20 feet wide. Ensure that the surface of the parking space is firm and stable at a 2% maximum slope in all directions.

- **Picnic Facilities:** Add a second accessible picnic table. The table should have an extended section or a bench cut-out with appropriate knee and toe clearance. Secure the table to a surface with a slope no greater than 2% in all directions or up to 5% if unpaved and needed for drainage. Provide a clear, firm, and stable ground space a minimum of 36 inches wide on all usable sides of the accessible table.
- **Signage:** Lower the vertical map panel on the exterior of the visitor center building to allow for better viewing of the entire map by visitors seated in wheelchairs. Ensure that information is legible within the eye-level zone of 40 inches to 60 inches from the ground. Provide a level landing at the sign, a minimum of 30 inches by 48 inches wide, from a forward approach at a 2% maximum slope in all directions.

Details of the identified accessibility barriers and their recommended solutions and target time frames are available in the implementation strategy table

MUNISING FALLS VISITOR CENTER CONCEPTUAL SITE PLAN





SAND POINT BEACH

Sand Point Beach is located 4.3 miles northeast of the town of Munising on the park's western end. A parking lot with a paved surface and several accessible parking spaces, including van-accessible spaces, is connected to the beach. In the summer and early fall, a wheelchair-accessible mat is extended from the parking lot and across the beach to the edge of Lake Superior. Men's and women's restrooms, both with vault toilets, are installed in the parking lot. Several interpretive waysides and trash receptacles are also located in the parking lot area. Picnic tables, including one wheelchair-accessible picnic table, are installed in the sand, an amenity only found at Pictured Rocks National Lakeshore at Sand Point Beach. Small grills are installed next to the picnic tables. A free and accessible viewing scope is installed at Sand Point Beach each summer. Pets on a 6-foot leash are permitted on the beach and in the water.

Proposed accessibility improvements at Sand Point Beach include the following:

- **Picnic Facilities:** Improve 20% and at least two picnic tables to be accessible. The tables should have an extended section or a bench cut-out with appropriate knee and toe clearance and should be secured to a surface with a slope no greater than 2% in all directions or up to 5% if unpaved and needed for drainage. The grills too should be improved 20% and be made accessible. Provide clear, firm, and stable ground space, a minimum of 48 inches wide, on all usable sides of the grill with a maximum slope of 5% in all directions. Improve grills to be operable with closed fists and not require tight pinching, grasping, or twisting of the wrist.
- **Signage:** Provide clear ground space in front of the information signage. Ensure that this space is a minimum of 30 inches by 52 inches from a forward approach at a 2% maximum slope in all directions. Ensure that the surface is firm, stable, and slip-resistant. Improve or replace text on signs to use sans serif fonts, 24-point minimum

text, and high-contrast images and text, and minimize the use of all-caps text and italics. Lower the information signage so the bottom edge is between 24 inches and 36 inches.

Details of the identified accessibility barriers and their recommended solutions and target time frames are available in the implementation strategy table.

SAND POINT BEACH CONCEPTUAL SITE PLAN





SAND POINT MARSH TRAIL

Beginning across the road from the Sand Point Beach parking lot, on the western end of the park, Sand Point Marsh Trail is a ½ mile wheelchair-accessible interpretive trail loop. Two van-accessible parking spaces are available in the parking lot, as are accessible men’s and women’s restrooms with vault toilets. Much of the trail extends along a mostly flat, wooden boardwalk with wooden edge barriers and railings. The other portions of the trail are paved. Multiple waysides are installed along the boardwalk. Multiple wooden backless benches are also placed along the trail. A dedicated viewing area exists along the trail. Pets are not permitted on the trail.

Proposed accessibility improvements at Sand Point Marsh Trail include the following:

- **Site Features:** Provide signage at the trailhead that details trail conditions, including the length of the trail, the trail’s surface type, the typical and maximum running and cross slopes, and the typical and minimum tread width. Ensure that there is clear ground space in front of the Sand Point Marsh trailhead sign and that the surface is firm, stable, and slip-resistant. Lower the sign so that the top of the tactile map is no greater than 34 inches from the ground and the minimum distance to the bottom is 28 inches. Improve a minimum of 20% of the benches to have an armrest on at least one end. Provide companion seating spaces that measure a minimum of 36 inches by 48 inches minimum from a forward approach at a 2% maximum slope in all directions.
- **Trail:** Trim vegetation along the boardwalk to provide a 36-inch clear width and an 80-inch clear height along the trail.

- **Viewing Area:** Portions of the railing in the viewing area should be lowered or cut out to provide a clear viewing space between 32 inches and 51 inches above the ground that extends the full length of the clear ground space.

Details of the identified accessibility barriers and their recommended solutions and target time frames are available in the implementation strategy table.

SAND POINT MARSH TRAIL CONCEPTUAL SITE PLAN





USCG BOAT HOUSE

The United States Coast Guard Boat House is located at the end of Sand Point Road, adjacent to the historic Munising United States Coast Guard Station. While the latter building is now used as Pictured Rocks National Lakeshore's headquarters, and is closed to the public, the boat house now houses several items of lifesaving equipment, including an authentic lifeboat, and museum exhibits. A parking lot comprised of a dirt surface and including one accessible parking space is in front of the boat house. A small wooden bulletin board, containing a large map of the park and informational flyers, is installed near the accessible parking space. A concrete sidewalk connects the parking lot with the two buildings. A small interpretive wayside is installed along the sidewalk between the two buildings and provides information about the United States Coast Guard's history on the Upper Peninsula. One porta-potty and one bear-proof trash receptacle are placed along the sidewalk closer to the boat house. The boat house is open only during the summer months.

Proposed accessibility improvements at USCG Boat House include the following:

- **Interpretive Wayside:** Provide clear ground space in front of the interpretive wayside that is a minimum of 30 inches by 52 inches minimum at a 2% maximum slope in all directions. Ensure that the surface is firm, stable, and slip-resistant. Improve the wayside to provide a forward approach that has 27 inches high knee clearance extending 11 inches minimum underneath and 9 inches high toe clearance with 25 inches minimum underneath.
- **Parking:** Provide an additional accessible parking space that is a minimum of 11 feet wide with an access aisle a minimum of 5 feet wide. The stall and access aisle should

have a firm, stable, and slip-resistant surface and should be at a 2% maximum slope in all directions.

- **Sidewalk:** Improve the route of the sidewalk to be a minimum of 36 inches wide, with a 2% maximum cross slope, and changes in level that are no greater than ½ inch.

Details of the identified accessibility barriers and their recommended solutions and target time frames are available in the implementation strategy table.

USCG BOAT HOUSE CONCEPTUAL SITE PLAN





EDUCATIONAL SHED ("ED SHED")

Pictured Rocks National Lakeshore has a small metal shed where park staff provide educational and interpretive programming to local school groups. Field trips are hosted at the park year-round. A half circle driveway with a gravel surface provides access to Carmody Road for those coming and going from the shed. A concrete sidewalk approximately 30 feet in length extends along the front of the shed. A front door on the east-facing side of the shed and a back door on the north-facing side provide access to the structure's interior. The clear ground space at the back door is comprised of a loose gravel surface. A sign on the outside of the shed includes a map of the park. An augmented-reality sandbox is installed inside of the shed.

An accessible restroom with a vault toilet is available inside an adjacent building. Only park staff and individuals on approved school trips have access to the education shed.

Proposed accessibility improvements at the education shed include the following:

- **Routes:** Improve the transition from the gravel surface of the driveway to the concrete sidewalk so that the change in level is either $\frac{1}{4}$ inch or $\frac{1}{2}$ inch and includes a beveled edge. Reduce the vertical thresholds in this location so they are not higher than $\frac{1}{4}$ inch or $\frac{1}{2}$ inch and they too include a beveled edge. Improve the surface of the clear ground space at the back door to be firm, stable, and slip-resistant.
- **Restroom:** Install a tactile sign on the latch side of the restroom door. Ensure that the bottoms of the tactile characters are a minimum of 48 inches above the ground and the bottoms of the highest tactile characters are a maximum 60 inches above the ground. Improve the restroom door handles to be a lever that does not require tight pinching or grasping and can be operable with a closed fist. Raise the grab bars in the restroom to be between 33 and 36 inches above the floor.

- **Publications:** Improve or replace the text on the map of the park to be sans serif fonts, at a minimum 24-point size. Ensure high-contrast images and text are used on the map and minimize the use of all-caps text and italics.

Details of the identified accessibility barriers and their recommended solutions and target time frames are available in the implementation strategy table.

EDUCATIONAL SHED CONCEPTUAL SITE PLAN





MINERS FALLS

Miners Falls is located near the geographical center of Pictured Rocks National Lakeshore, 4 miles north of Alger County Road H-58 and 0.5 mile off of Miners Castle Road (Alger County Road H-11). A small parking lot, which includes a van-accessible parking space, provides access to the falls. Bear-proof trash receptacles are installed in the parking lot. An accessible, seasonal restroom in the lot contains a vault toilet. A small wooden bulletin board containing a map of the park and informational flyers is installed near the trailhead leading to the falls. The trail, which has a gravel and dirt surface, extends for 0.6 miles one way before reaching one viewing platform. A second, lower platform, 64 steps down, provides additional views. Pets on a 6-foot leash are permitted at Miners Falls.

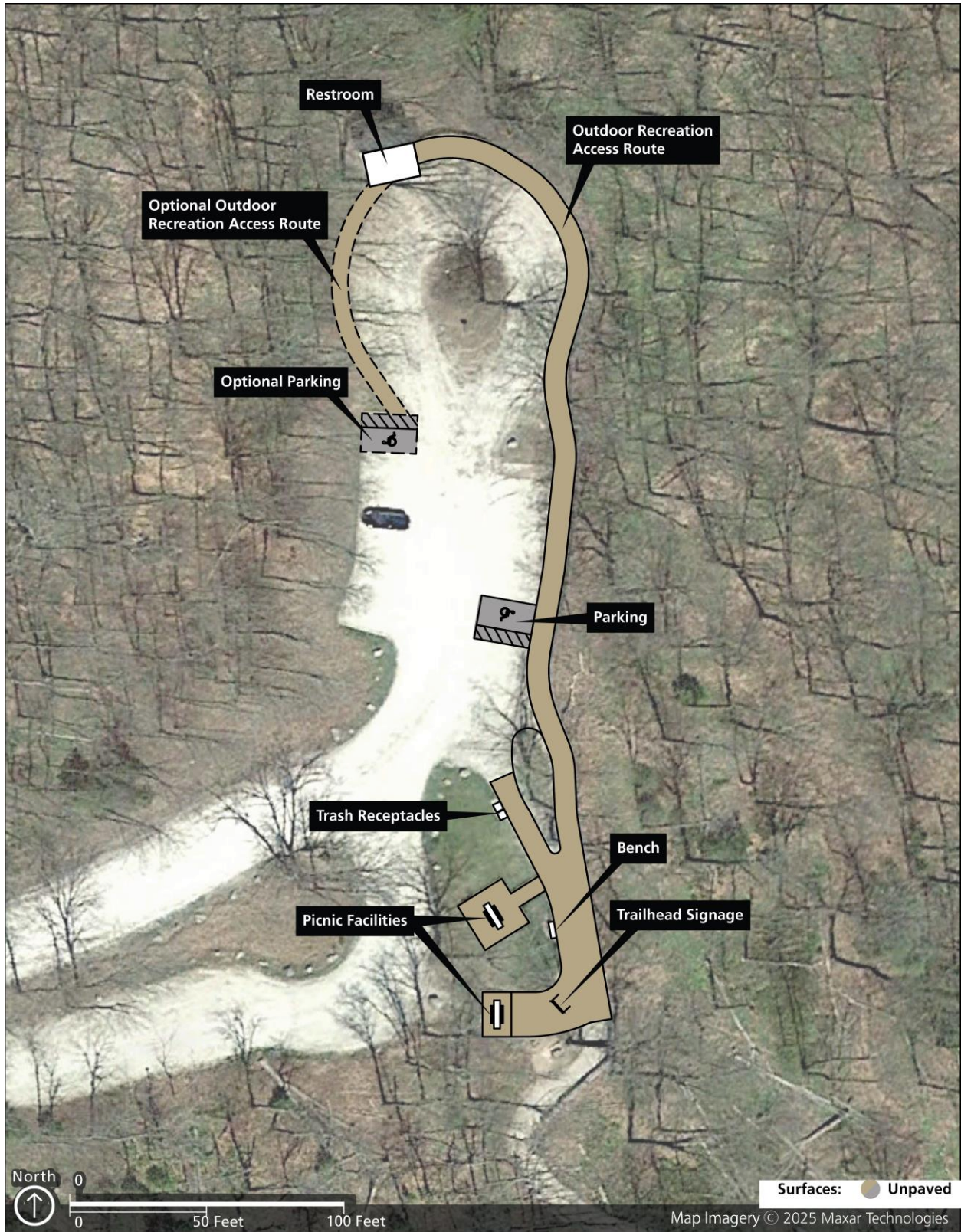
Proposed accessibility improvements at Miners Falls include the following:

- **Restroom:** Provide a vertical grab bar in the restroom that is a minimum of 18 inches in length and is mounted with the bottom of the bar between 39 inches and 41 inches above the floor. The centerline of the bar should be located a minimum of 39 inches and a maximum of 41 inches from the rear wall.
- **Site Features:** Provide companion seating space adjacent to the benches that is a minimum of 36 inches by 48 inches from a forward approach at a 2% maximum slope in all directions. Improve the bench to have an armrest on at least one end and a backrest.
- **Trail:** Ensure that the route always has a minimum of 48 inches clear width. Install wheel stops to prevent cars from parking too far forward and blocking the route. Provide signage at the trailhead that details trail conditions, including trail length, surface type, typical and maximum running and cross slopes, and typical and minimum tread width. Reduce vertical thresholds so they are not higher than ¼ inch

or ½ inch with a beveled edge. Create an accessible route from the end of the parking lot to the restroom that is a minimum of 48 inches wide and has running slopes no greater than 5% and cross slopes no greater than 2%. Ensure that the new route's surface is firm, stable, and slip-resistant.

Details of the identified accessibility barriers and their recommended solutions and target time frames are available in the implementation strategy table.

MINERS FALLS CONCEPTUAL SITE PLAN





MINERS CASTLE INFORMATION CENTER

Located approximately 1.5 miles west of Miners Beach, the Miners Castle Information Center comprises three interconnected buildings. Parking curbs are installed along the portion of Miners Castle Road (Alger County Road H-11) closest to the information center and striping is used to create a parking island. Multiple accessible parking spaces are available on the island. An asphalt path, bracketed by a wooden three-rail fence, extends from the middle of the parking lot to the information center buildings. A wooden sign listing fees is installed along the sidewalk. Two bear-proof trash receptacles are situated adjacent to the sign. A picnic area, with seven picnic tables, is located across from the parking lot. Small grills are installed adjacent to two of the picnic tables.

In the middle of the path, two wooden stairs, with a wooden railing in the center, extend up onto a wooden deck. A wheelchair ramp, with railings on both sides, providing additional access to the deck is located northeast of the stairs. All three information center buildings are installed on the deck. A fee-collection office occupies the information center building closest to the stairs. A large map of the park and a sign with information about Lake Superior are installed across from this office. Behind the office are men's and women's restrooms, both with flush toilets. Several wooden backless benches, of varying sizes, and multiple drinking fountains are installed throughout the deck.

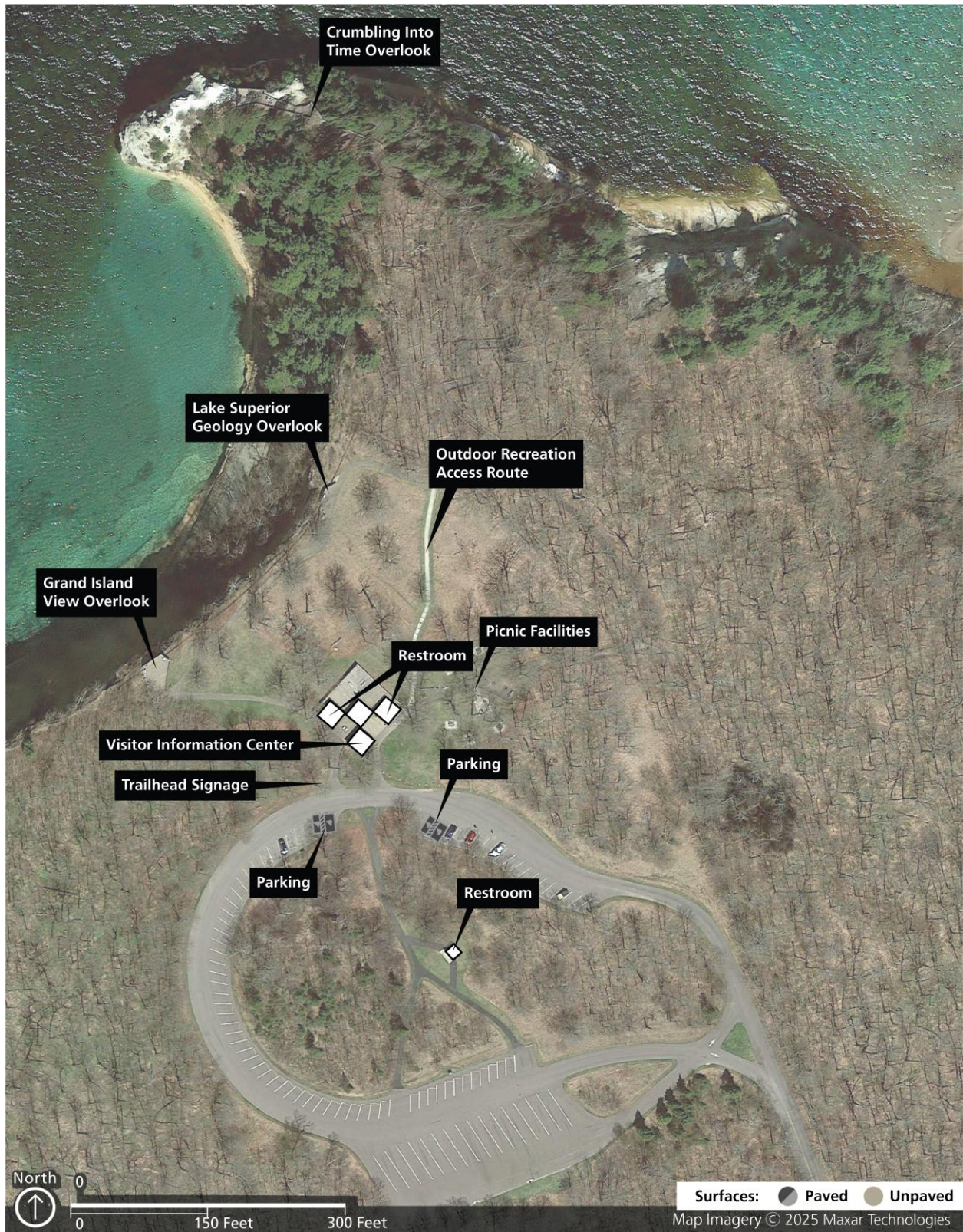
The path continues northwest of the information center buildings, providing access to two viewing platforms. The upper viewing platform includes a wooden bench with a backrest and two armrests. Two interpretive waysides are installed on the viewing platform, as is a standing viewing scope. The lower viewing platform is 1,000 feet north of the upper platform and includes one interpretive wayside and several plexiglass viewing windows.

Proposed accessibility improvements at Miners Castle Information Center include the following:

- **Routes:** Improve the deck to have openings no greater than ½ inch wide.
- **Site Features:** Improve 20% of the benches to have a backrest and an armrest on at least one side of the bench.
- **Stairs:** Provide handrails on both sides of the stairs leading to the information center. Ensure handrails are between 34 and 38 inches above the stair surface and that they extend the entire length of the stairs. At the bottom of the stairs, ensure that the handrails extend at the slope of the stair flight for a horizontal distance at least equal to one tread depth beyond the last riser nosing.
- **Viewing Windows:** Expand and improve the railing in the lower viewing platform to provide a clear viewing space between 32 inches and 51 inches above the ground that extends the entire ground space of the viewing area, which is a minimum of 36 inches by 48 inches.

Details of the identified accessibility barriers and their recommended solutions and target time frames are available in the implementation strategy table.

MINERS CASTLE INFORMATION CENTER CONCEPTUAL SITE PLAN





MINERS BEACH

Located 10.4 miles east of the town of Munising on Alger County Road H-58 and Miners Castle Road (Alger County Road H-11), Miners Beach is the longest stretch of beach at Pictured Rocks National Lakeshore that is easily accessible by vehicle. West of the beach is a large, looped parking lot with a paved surface. An accessible parking space is available in the parking lot. An accessible restroom, with a vault toilet, is also available in this lot. A short trail, with a loose gravel surface, leading from the parking lot, provides access to picnic facilities and a small viewing area overlooking the beach. Small grills are installed next to the picnic tables. A smaller concessions parking area exists in the east end. Bear-proof trash receptacles are installed in both parking lots. Separate staircases, one in the west end and one in the east end, provide access to the nearly mile-long stretch of beach. Pets on a 6-foot leash are permitted at Miners Beach.

Proposed accessibility improvements at Miners Beach include the following:

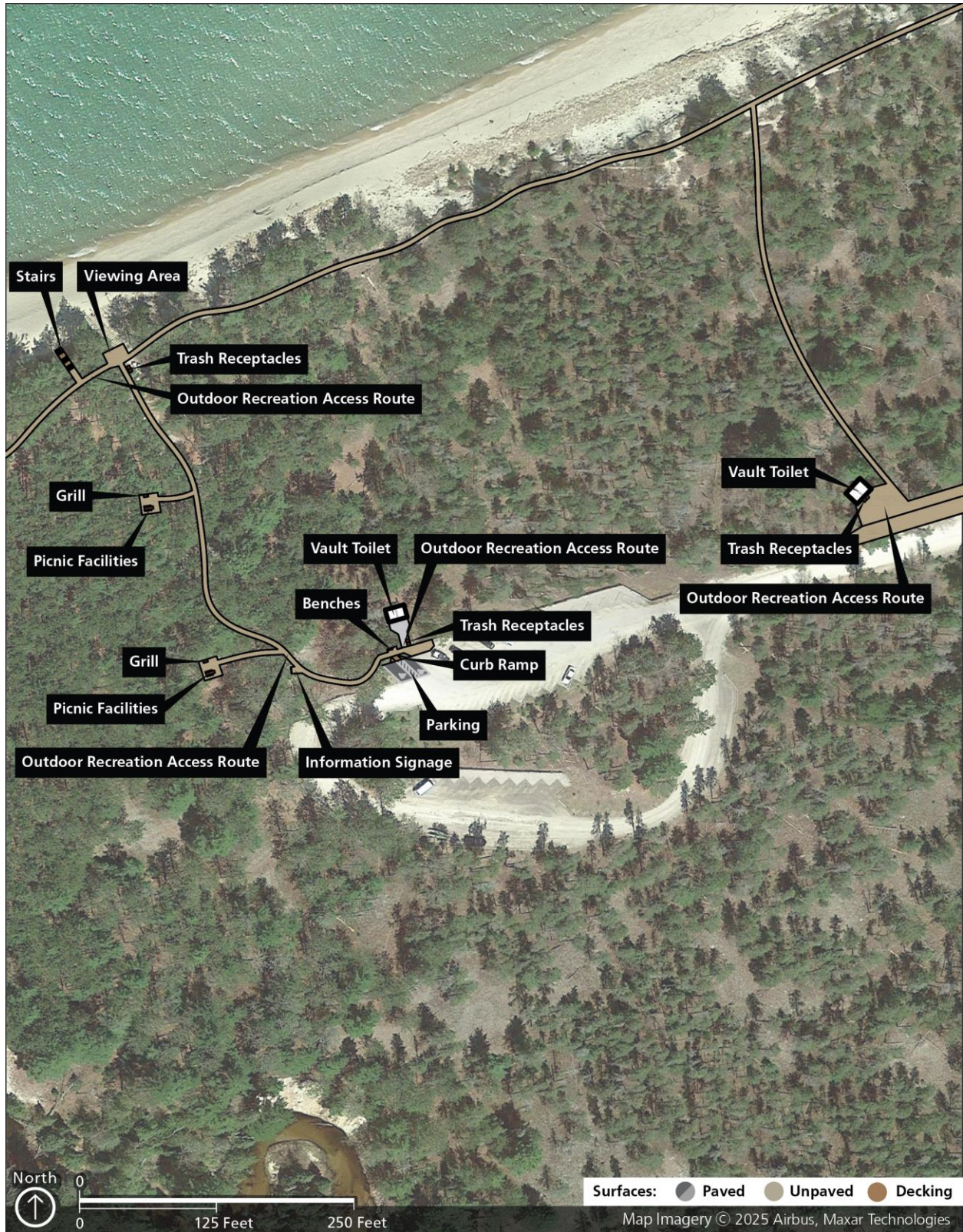
- **Parking:** Improve the existing van-accessible parking space to either be 1) a minimum of 11 feet wide with a 5-foot minimum-wide access aisle or 2) a minimum width of 8 feet with an access aisle a minimum of 8 feet wide. Improve the surface of the stall and access aisle to be firm, stable, and slip-resistant at a 2% maximum slope in all directions. Provide an accessible parking sign and van accessible signage to designate this stall. Provide one additional accessible parking stall that is a minimum of 8 feet wide, with an access aisle a minimum of 5 feet wide.
- **Stairs:** Provide handrails on both sides of the stairs to the beach that are between 34 inches and 38 inches above the stair surface that extend the entire length of the stairs. At the bottom of the stairs, ensure the handrails extend at the slope of the stair flight for a horizontal distance equal to one tread depth beyond the last riser nosing. Improve the last segment of the stairs to have closed risers. Improve stair riser heights

to be between 4 and 7 inches with a uniform riser height and uniform tread depth throughout the stairs.

- **Trail:** Improve the surface of the trail to the picnic facilities and viewing area to be firm and stable, have a 2% maximum cross slope, and have a 10% maximum running slope. Reduce the vertical thresholds along the trail so they are not higher than a maximum of a ½ inch.

Details of the identified accessibility barriers and their recommended solutions and target time frames are available in the implementation strategy table.

MINERS BEACH CONCEPTUAL SITE PLAN





LITTLE BEAVER LAKE AND CAMPGROUND

Little Beaver Lake Campground, located adjacent to the Beaver Basin Wilderness, is a drive-in campground comprised of eight campsites on and near Little Beaver Lake. One of the campsites is wheelchair-accessible. Each campsite includes a fire ring with grill grate, picnic table, and tent pad. Drinking water, trash receptacles, vault toilets, and water spigots are available in the campground. A 1.5-mile trail that begins inside the campground leads to Lake Superior and connects with the North Country Trail. A small boat ramp is available for launching boats. As Little Beaver Lake is within the Beaver Basin Wilderness, only vessels with electric motors are permitted. Pets are not permitted within the campground or on its trails.

Proposed accessibility improvements at Little Beaver Lake and Campground include the following:

- **Drinking Fountain:** Provide drinking fountains for both standing and sitting people. The drinking fountain, as of 2025, does not provide dual heights. Spout outlets for people sitting should be a maximum of 36 inches above the finish floor. Spout outlets of drinking fountains for standing people should be a minimum of 38 inches and a maximum of 43 inches above the finish floor. The drinking fountain should be improved to be operable with 5 pounds of force or less.
- **Restroom:** Reinstall the toilet paper dispenser in the restroom to provide 12 inches of clear wall space between the top of the grab bar and below the dispenser. Ensure that 1-1 and ½ inches of clear wall space is maintained below the grab bar. Place towel dispensers between 15 inches and 48 inches from the door and ensure that the centerline of the dispenser is between 7 and 9 inches from the front of the toilet. Improve the tactile signage by the vault toilet door so the bottoms of the tactile characters are a minimum of 48 inches above the ground, and the bottoms of the highest tactile characters are a maximum of 60 inches above the ground.

- **Trash Receptacles:** Improve the trash receptacle to be operable with a closed fist and with less than 5 pounds of force.

Details of the identified accessibility barriers and their recommended solutions and target time frames are available in the implementation strategy table.

LITTLE BEAVER LAKE AND CAMPGROUND CONCEPTUAL SITE PLAN





LAKE SUPERIOR OVERLOOK

The Lake Superior Overlook is located 1.2 miles west of Hurricane River Beach on Alger County Road H-58. Visitors coming to the overlook turn into a parking lot with a paved surface that includes two accessible parking spaces. In the middle of the parking lot, flanked by two bear-proof trash receptacles, a sidewalk with a paved surface leads to a large observation deck. One interpretive wayside is installed on the observation deck. West of the observation deck, a sidewalk with a paved surface extends along the northern lip of the parking lot, a three-rail fence running parallel. The sidewalk ends in the western portion of the parking lot. In its place, a trail with a loose gravel surface leads to a wheelchair-accessible viewing platform. Extending down from the platform, 38 steps provide access to a section of Twelve-mile Beach. An accessible restroom with two vault toilets is located along the sidewalk in the parking lot. A bear-proof trash receptacle is installed outside of the restroom. A small, wooden bulletin board with a map of the park and informational flyers posted on it is located along the sidewalk adjacent to the restroom.

Proposed accessibility improvements at Lake Superior Overlook include the following:

- **Parking:** Provide one oversized accessible parking space. This space should be 20 feet wide at minimum. Improve the existing van-accessible parking space to either be 1) a minimum of 11 feet wide with an access aisle a minimum of 5-feet-wide or 2) a minimum of 8 feet wide with an access aisle a minimum of 8 feet wide. Provide an accessible parking sign indicating van accessibility to designate the van-accessible stall. The sign should be a minimum of 60 inches above the ground to the bottom of the sign.
- **Restroom:** Improve the tactile sign by the restroom door so the bottoms of the tactile characters are a minimum of 48 inches above the ground and the bottoms of the

highest tactile characters are a maximum of 60 inches above the ground. Lower the hook in the toilet to be between 15 and 48 inches above the floor.

- **Viewing Area:** Lower or cut out a portion of the railing at the wheelchair-accessible viewing platform to provide a clear viewing space between 32 inches and 51 inches above the ground that extends the full length of the clear ground space.

Details of the identified accessibility barriers and their recommended solutions and target time frames are available in the implementation strategy table.

LAKE SUPERIOR OVERLOOK CONCEPTUAL SITE PLAN





LOG SLIDE OVERLOOK

Visitors reach Log Slide Overlook by driving approximately 5.5 miles west on Alger County Road H-58 from the Grand Sable visitor center and turning north onto Log Slide Road. Those making the trip enter a parking lot, with a paved surface. Two van-accessible parking spaces are available, one in the northern section of the parking lot and one in the southern section. From the parking lot, a trail with a loose gravel surface extends north and south. The trail extends for roughly one-quarter of a mile to the north before reaching the overlook area. In the parking lot area, a small information kiosk, containing a small wooden bulletin board with flyers posted to it, is installed near this section of the trail. A drinking fountain is attached to the information kiosk. A small interpretive wayside and a small wooden backless bench are across from the section of trail that leads to the north. Additional backless benches are installed along the trail leading to the overlook area. A three-rail wood fence runs parallel to the trail. The southern portion of the trail leads to a small concrete sidewalk where an accessible restroom with two vault toilets is installed. Two bear-proof trash receptacles are installed outside of the restroom. Pets are not permitted on the trail leading to the overlook.

Proposed accessibility improvements at Log Slide Overlook include the following:

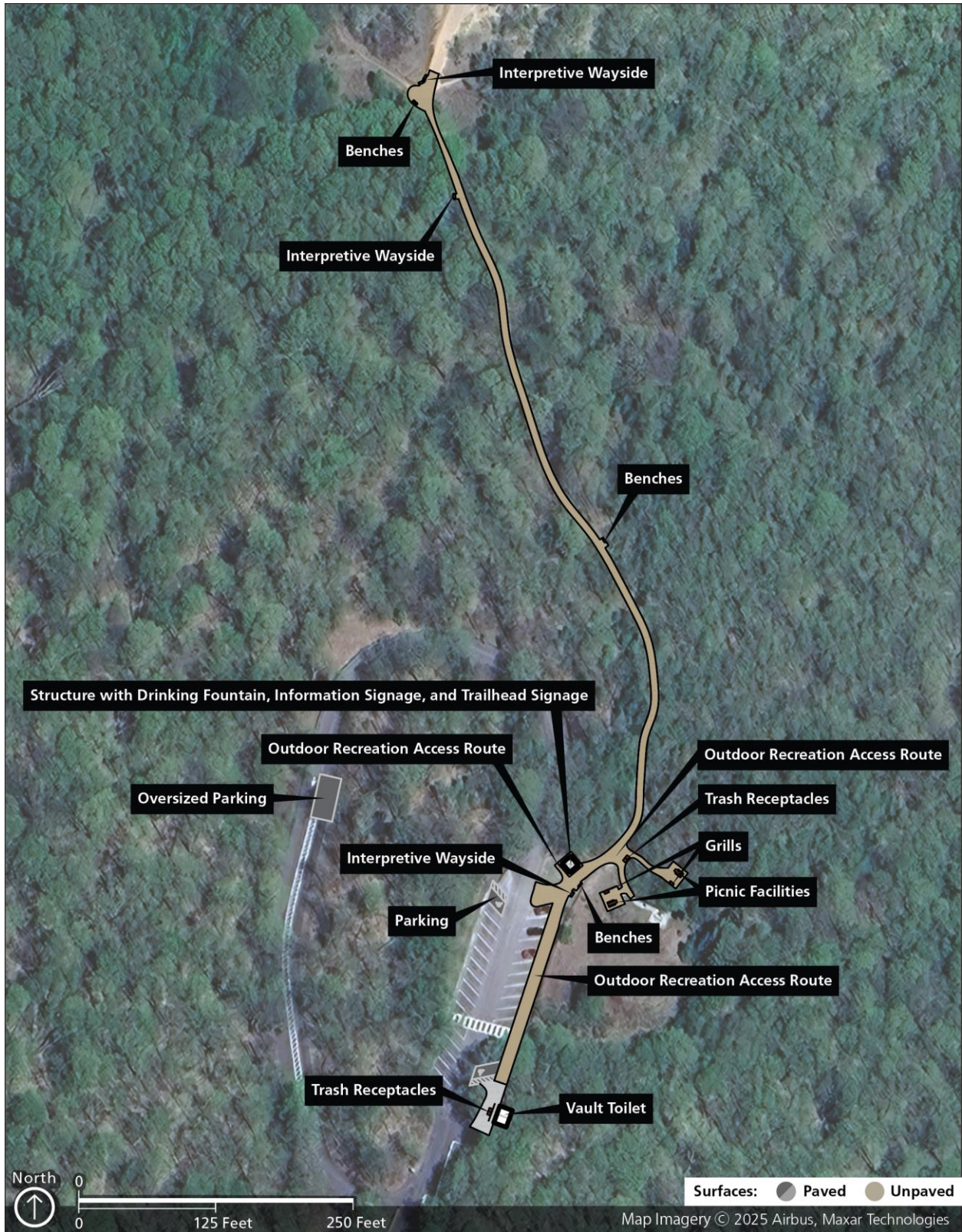
- **Picnic Facilities:** Make at least two picnic tables to be accessible. The tables should have an extended section or a bench cut-out with appropriate knee and toe clearance. Provide a minimum of 36 inches of clear, firm, and stable ground space on all usable sides of accessible tables.
- **Site Features:** Improve 20% of the benches to have an armrest on at least one end of the bench and a backrest. Provide companion seating space adjacent to the benches that measures a minimum of 36 inches by 48 inches from a forward approach at a 2% maximum slope in all directions. Drinking fountains for both

standing and sitting persons should be provided. Grills should be improved 20% and at least two grills should be made accessible. A clear, firm, and stable ground space a minimum of 48 inches wide should be provided on all usable sides of the grill with a maximum slope of 5% in all directions. The cooking surface grate should be improved to be operable with one fist, without requiring tight grasping, pinching, or twisting of the wrist.

- **Trail:** The route to the trailhead is currently a loose gravel surface. It should be improved to be firm and stable, have a 2% maximum cross slope, and have a 10% maximum running slope. The transition from concrete to gravel should be improved so the change in level is a maximum ½ inch.

Details of the identified accessibility barriers and their recommended solutions and target time frames are available in the implementation strategy table.

LOG SLIDE OVERLOOK CONCEPTUAL SITE PLAN





HURRICANE RIVER

Located 1.5 miles west from the Au Sable Light Station on the shores of Lake Superior, the Hurricane River Campground is a drive-in 21-site campground split across an upper loop and a lower loop. Ten campsites are available in the upper loop and 11 are available in the lower loop. One wheelchair-accessible campsite is available in each loop. Each loop contains drinking water, trash receptacles, and accessible restrooms with vault toilets. Fire rings with grill grates, picnic tables, and tent pads are provided at each campsite. Several of the campsites are designated as generator-free. Stairs leading from the lower loop provide access to Hurricane River Beach. The lower loop also provides access to trails, with the western side of the campground facilitating a connection to the North Country Trail and the eastern side connecting with the Au Sable Lighthouse Trail. Pets on a 6-foot leash are permitted at campsites and are allowed on Hurricane River Beach.

Proposed accessibility improvements at Hurricane River include the following:

- **Camping Facilities:** A minimum of two accessible campsites should be distributed between the two loops and units available. Parking spaces, outdoor constructed features, and routes in these campsites should meet ABAAS requirements.
- **Parking:** Parking stalls and access aisles should be made firm, stable, and slip-resistant, with a 2% maximum slope in all directions. Accessible parking signs should be provided for each stall, with van-accessible signs to designate the van-accessible stall. There should be a minimum of 60 inches between the ground and the bottom of the sign.
- **Picnic Facilities:** The two picnic tables should be improved to be accessible. The tables should have an extended section or a bench cut-out with appropriate knee and

toe clearance. Tables should be secured to a surface with a slope no greater than 2% in all directions or up to 5% if unpaved and needed for drainage.

- **Restroom:** The vertical thresholds on the restroom doors should be reduced so they are not higher than a ½ inch. The tactile signage adjacent to the latch side of the restroom door should be improved so the bottoms of the tactile characters are 48 inches minimum above the ground and the bottoms of the highest tactile characters are 60 inches maximum above the ground. The toilet paper dispenser should be reinstalled to provide 12 inches of clear wall space between the top of the grab bar and below the dispenser.
- **Stairs:** The handrail at the top of the stairs should extend 12 inches horizontally above the landing. The handrail at the bottom of the stairs should extend at the slope of the stairs for a horizontal distance equal to one tread depth. The handrails should be improved to have a continuous gripping surface with a perimeter dimension between 4 inches and 6¼ inches and a maximum cross-section dimension of 2½ inches. Improve the stairs to have closed risers.
- **Viewing Area:** Explore whether to add a railing for safety at the viewing area. Ensure that any lowered or cut-out portion of the railing provides a clear viewing space between 32 inches and 51 inches above the ground and extends the full length of the clear ground space.

Details of the identified accessibility barriers and their recommended solutions and target time frames are available in the implementation strategy table.

HURRICANE RIVER CONCEPTUAL SITE PLAN





AU SABLE LIGHT STATION

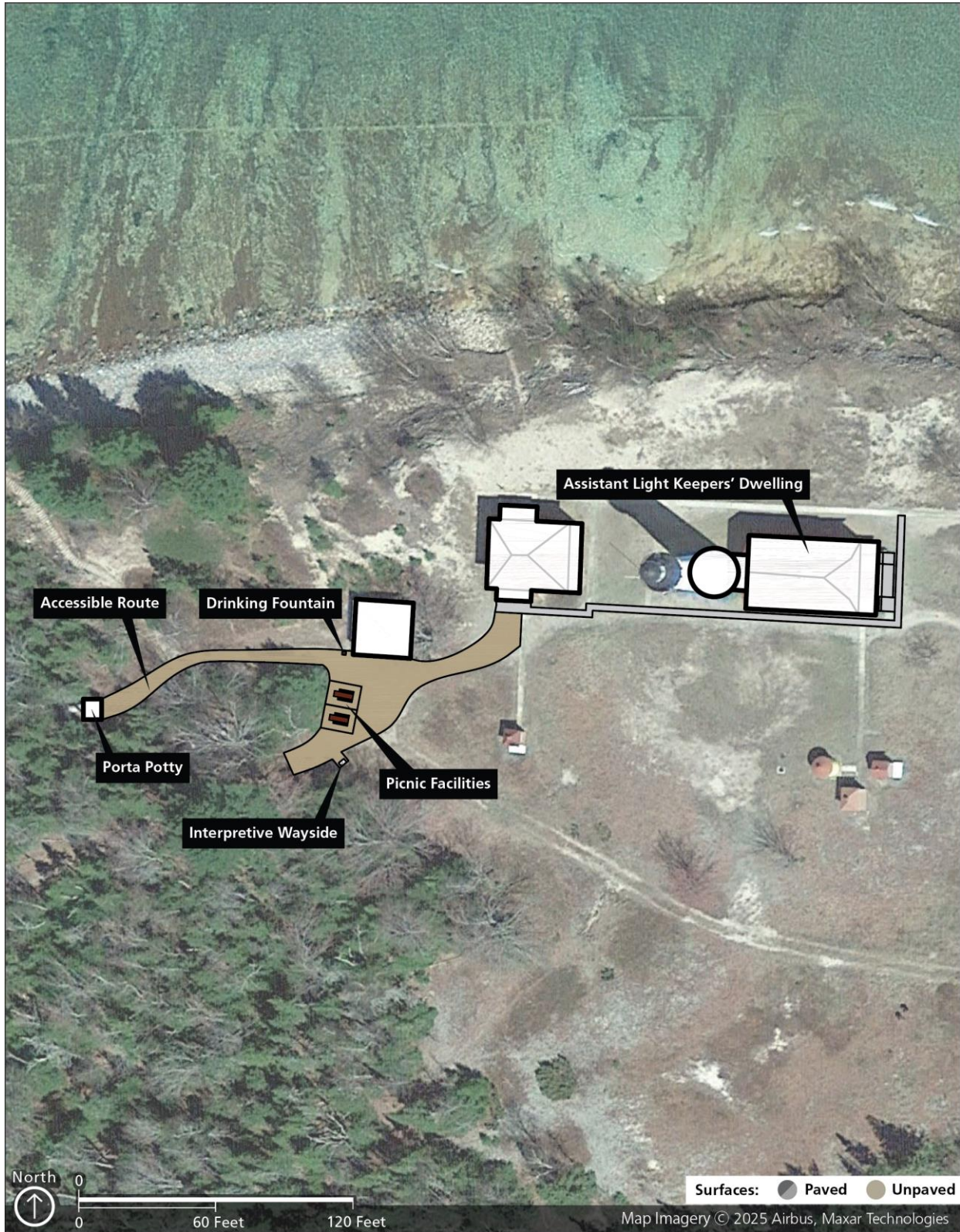
Situated along Pictured Rocks National Lakeshore's eastern end, approximately 8.5 miles from the Grand Sable Visitor Center, the Au Sable Light Station is one of the park's iconic cultural landscapes. The light tower and its two keepers' dwellings are surrounded by a network of concrete sidewalks. A loose gravel surface covers the clear ground space in front of an interpretive wayside about the light station. A small gathering area, with wood log benches and a drinking fountain, is available to visitors. A porta-potty is also available. Gaining entry to the keepers' dwellings, as well as the light tower, requires visitors to use stairs. The light station is open for guided tours from the middle of June to the end of September.

Proposed accessibility improvements at Au Sable Light Station include the following:

- **Routes:** Provide a clear ground space with a firm, stable, and slip-resistant surface in front of the interpretive wayside.
- **Picnic Facilities:** Provide additional knee and toe clearance at a minimum of two picnic tables. Consider securing the picnic tables to the ground to ensure 36 inches of clear ground space is maintained.
- **Restroom:** Replace the existing porta-potty with an accessible one.

Details of the identified accessibility barriers and their recommended solutions and target time frames are available in the implementation strategy table.

AU SABLE LIGHT STATION CONCEPTUAL SITE PLAN





GRAND SABLE DUNES PARKING

Visitors reach the Grand Sable Dunes parking by pulling off Alger County Road H-58 into a circular parking area with a loose gravel surface. A small wooden bulletin board, with a map of the park and informational flyers posted on it, is installed on the southwestern side of the area along with a bear proof trash receptacle. No formal parking spaces are marked and no designated accessible parking spaces are provided. Beginning where this sign is installed, a wooden boardwalk runs approximately 200 feet adjacent to the road headed south that leads to a floating fishing dock. The t-shaped fishing dock provides safety railings on all sides, an integrated bench, and lowered railing sections. A small wooden sign on the western side of the parking lot marks a trailhead for the North Country Trail. The sign includes information notifying hikers that backcountry camping requires a permit and that pets are prohibited on the trail.

Proposed accessibility improvements at Grand Sable Dunes include the following:

- **Parking:** Provide an accessible car parking space to be either 1) a minimum of 11 feet wide with an access aisle a minimum of 5-feet-wide or 2) an 8-foot minimum wide with an access aisle a minimum of 8-feet-wide. The stall and access aisle should be firm, stable, and slip-resistant at a 2% maximum slope in all directions.

- **Routes:** Improve the routes to be firm and stable. Cap connection points on the pier so openings are a maximum of ½ inch wide.
- **Signage:** Improve or replace text to use sans serif fonts, 24-point minimum text, high-contrast images and text, and minimize the use of all-caps text and italics. Provide signage at the trailhead that details trail conditions, including trail length, surface type, typical and maximum running and cross slopes, and typical and minimum tread width.

Details of the identified accessibility barriers and their recommended solutions and target time frames are available in the implementation strategy table.

GRAND SABLE LAKE CONCEPTUAL SITE PLAN





GRAND SABLE VISITOR CENTER

The Grand Sable Visitor Center is located approximately one mile east of the Grand Sable Lake Overlook on Alger County Road H-58. Surrounded by a large oval parking lot with a paved surface that extends onto both sides of the road, the visitor center building sits adjacent to the northern lot. A concrete sidewalk borders the northern lot and provides access to the visitor center building. A drinking fountain is available on the northern side of the sidewalk. Northeast of the drinking fountain is an accessible restroom with a vault toilet. Closer to the visitor center building is a small wooden bulletin board, with a map of the park and informational flyers posted on it. A larger sign, with information on park fees, is installed in the ground next to the bulletin board. Two bear-proof trash receptacles are placed across the sidewalk from the informational sign. A three-rail fence runs parallel to last fifty feet of the northern side of the sidewalk leading up to the visitor center building's front door. A small wooden backless bench is installed on the southern side of the sidewalk.

In the south parking lot, a sign marks the location of the North Country Trail. Three interpretive waysides provide additional information. A large wooden bulletin board, with a map of the park and informational flyers, is installed on the ground close to the signs. A picnic bench is on the southeast side of the south lot.

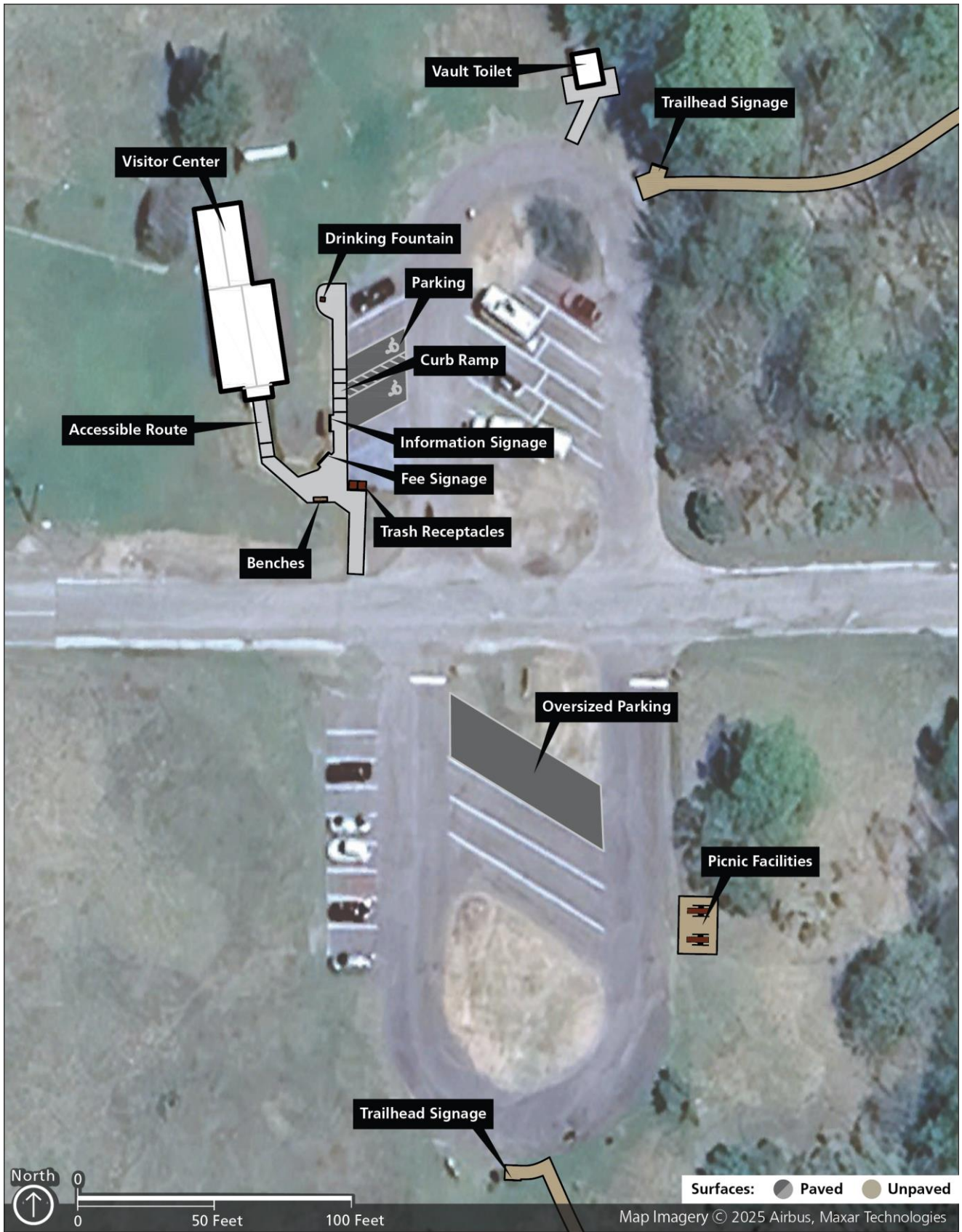
Museum exhibits are displayed inside of the visitor center building. A section of the building is set aside as a bookstore. Men's and women's restrooms with flush toilets are installed inside of the building. The Grand Sable Visitor Center is open seasonally, from June 1st to early October.

Proposed accessibility improvements at Grand Sable Visitor Center include the following:

- **Exhibits:** Improve or replace text in the exhibits to use sans serif fonts, 24-point minimum text, high-contrast images and text, and minimize the use of all-caps text and italics.
- **Parking:** Provide a second accessible parking space that is a minimum of 8 feet wide with an access side a minimum of 5 feet wide. Install accessible parking signs to designate where accessible parking spaces are available. There should be a minimum of 60 inches between the ground and the bottom of the sign. Provide one oversized parking space to be accessible.
- **Picnic Facilities:** Make at least two picnic tables to be accessible. The tables should have an extended section, or a bench cut-out with appropriate knee and toe clearance. Provide a clear, firm, and stable ground space, a minimum of 5 feet wide, on all usable sides of accessible tables.
- **Restroom:** Provide accessible features in the restroom, including requirements for signage, toilet, grab bars, reach ranges, and clear floor space. Provide tactile signs on the latch side of the doors to the women’s restroom and the men’s restroom on the interior of the visitor center building. Insulate or configure the supply and drainpipes under the restroom sinks to protect against contact. Lower the mirror in both restrooms above the sinks to ensure the bottom edge of the reflecting surface is a maximum of 40 inches above the restroom floor.
- **Retail Items:** Distribute items lower on shelves and displays to be accessible within a seated reach range.

Details of the identified accessibility barriers and their recommended solutions and target time frames are available in the implementation strategy table.

GRAND SABLE VISITOR CENTER CONCEPTUAL SITE PLAN





PICTURED ROCKS NATIONAL LAKESHORE PROGRAMS

PIRO showed strengths in its diverse array of activities and programs designed to provide engaging and educational experiences for all visitors. The park offers ranger-led walks, interpretative talks, and interactive tours that deepen the understanding of the area's natural and cultural heritage. Additionally, the park features special events that highlight its unique ecological and historical significance.

The park does not currently offer audio tours or provide comprehensive accessibility information on its website. Unique opportunities exist to offer these services to engage staff and further support visitors with disabilities. PIRO staff are aware of these areas for improvement and are committed to addressing them.

Proposed accessibility improvements to parkwide programs include the following:

- **Publications:** Enhance the availability of large print and braille versions of park brochures and maps to ensure all visitors can access essential information.
- **Audiovisuals:** Introduce captioning and audio descriptions for all park videos and exhibits to cater to visitors with hearing and visual impairments.
- **Website and Social Media:** Upgrade the park's website to include detailed accessibility information, such as accessible trail routes, facilities, and availability of assistive services. Ensure that social media posts are accessible with alt text for images and transcription for videos.

- Walks, Talks, Tours, and Special Events: Provide sign language interpreters and portable assistive listening devices during ranger-led activities and special events. Ensure that tour routes are wheelchair accessible and include resting areas with seating.

Details of the identified accessibility barriers and their recommended solutions and target time frames are available in the implementation strategy table.

The sense of place at PIRO is defined by its stunning landscapes, rich biodiversity, and historical sites that offer a glimpse into the region's past. The area's importance is underscored by its role in preserving unique ecosystems and cultural heritage, making it a noteworthy destination for visitors seeking both recreation and education. Accessible accommodations that reflect the park's commitment to inclusivity enhance the visitor experience, ensuring that everyone can enjoy the beauty and significance of PIRO.

Details of the identified accessibility barriers and their recommended solutions and target time frames are available in the implementation strategy table.



POLICIES, PRACTICES, COMMUNICATION, AND TRAINING

Pictured Rocks National Lakeshore showed strengths in its procedure for making a sand wheelchair available at Sand Point; training interpretive staff in 508 compliance for programs, the website, and social media; and accessibility communications with park concessionaire. The park does not currently offer universal accessibility training and only limited discipline-related accessibility training. Unique opportunities exist to offer trainings that educate staff and empower further support for visitors with disabilities. Park staff are aware of these areas for improvement and are committed to addressing them.

Proposed accessibility improvements to policies, practices, communication, and training include the following:

- **Staff Training and Park Protocols:**
 - Annual accessibility training for staff at seasonal onboarding.
 - Annual review of technology to improve staff and visitors with disabilities
- **Communications and Partnerships:**
 - Complement informal outreach with a formal process to engage local groups that promote accessibility (eg. UP SAIL).

Details of the identified accessibility barriers and their recommended solutions and target time frames are available in the implementation strategy table.

This page intentionally blank.

CONCLUSION

Pictured Rocks National Lakeshore staff are committed to providing all visitors with the opportunity to connect with and learn about the park's unique natural, cultural, and recreational resources. Accessibility improvements identified in the Pictured Rocks National Lakeshore SETP will make it easier for individuals with cognitive, hearing, vision, and mobility disabilities to discover, understand, and enjoy the range of experiences available at the park. Park staff will continue to work towards accommodating all visitors while sustaining the park's legacy to preserve and protect while sustaining the park's legacy to preserve and protect its pristine wilderness, diverse natural ecosystems, and rich cultural heritage along the rugged and undeveloped Lake Superior shoreline.

The primary goal of the plan is to consider universal design strategies and document modifications needed to provide access to park facilities, services, activities, and programs for all visitors. As park staff work towards implementing the plan, physical access to and within assessed park areas will be improved, and park information and programs will be enhanced or created for all visitors across the breadth of key experiences at Pictured Rocks National Lakeshore. Examples include ranger-led interpretive programs, scenic boat tours, and backcountry hiking opportunities. Accessibility-related recommendations include adding tactile maps and Braille signs at visitor centers, providing audio-described content for interpretive exhibits and boat tours, installing assistive listening systems for ranger talks, and creating accessible camping opportunities. These improvements will ensure that visitors of all abilities can fully engage with the park's natural beauty and cultural heritage.

The Pictured Rocks National Lakeshore SETP is a living document intended to be used as a guiding reference for the park as park staff implement accessibility upgrades and documents accessibility accomplishments. As barriers to accessibility are removed and/or improved, changes will be updated in the implementation strategy table. Park staff will conduct periodic reviews to evaluate and update conditions to reflect accomplishments and document new programs or other changes that occur over time. Revisions to the plan may include conducting additional assessments for areas not originally conducted as a part of this plan.

Over time, the results of this collective effort will make Pictured Rocks National Lakeshore a truly welcoming and accommodating place for all visitors and will provide equal opportunity to access the places, resources, stories, and experiences at the park.

APPENDIX A: ACCESSIBILITY LAWS, STANDARDS, GUIDELINES, AND NPS POLICIES APPLICABLE TO PICTURED ROCKS NATIONAL LAKESHORE

As a national park, Pictured Rocks National Lakeshore is required to comply with specific federal laws that mandate that discriminatory barriers be removed to provide equal opportunities to persons with disabilities. The following laws, design guidelines, and director's orders pertain to Pictured Rocks National Lakeshore.

LAWS

- Architectural Barriers Act of 1968: <https://www.access-board.gov/aba/guides>
- Section 504 of the Rehabilitation Act of 1973: <http://www.law.cornell.edu/cfr/text/43/17.550>
- Section 508 of the Rehabilitation Act of 1973: <http://www.section508.gov>
- Effective Communication: <http://www.ada.gov/effective-comm.htm>
- Reasonable Accommodations: <http://www.opm.gov/policy-data-oversight/disability-employment/reasonable-accommodations>
- Other Power-Driven Mobility Devices: <https://www.ada.gov/opdmd.htm>
- Service Animals: https://www.ada.gov/service_animals_2010.htm
- 43 CFR, Section 17.549 Program Accessibility: Discrimination Prohibited: <http://www.law.cornell.edu/cfr/text/43/17.549>
- 43 CFR, Section 17.550 Program Accessibility: Existing Facilities: <http://www.law.cornell.edu/cfr/text/43/17.550>
- 43 CFR, Section 17.551 Program Accessibility: New Construction and Alterations: <http://www.law.cornell.edu/cfr/text/43/17.551>

NPS DIRECTOR'S ORDERS AND MANAGEMENT POLICIES

- Director's Order 16A: *Reasonable Accommodation for Applicants And Employees with Disabilities*: https://www.nps.gov/subjects/policy/upload/DO_16A_5-4-1999.pdf
- Director's Order 42: *Accessibility for Visitors with Disabilities*: https://www.nps.gov/subjects/policy/upload/DO_42_11-3-2000.pdf
- National Park Service *Management Policies 2006*, Section 1.9.3 Accessibility for Persons with Disabilities: <https://www.nps.gov/orgs/1548/upload/ManagementPolicies2006.pdf>

GUIDELINES

- Draft Accessibility Standards for Public Rights-Of-Way: <https://www.access-board.gov/prowag>
- Programmatic Accessibility Guidelines for National Park Service Interpretive Media: <https://www.nps.gov/subjects/hfc/accessibility.htm>

APPENDIX B: RESOURCES

Many of the resources listed below for trainings, accessibility assessments, project development, and implementation are currently located on the Pacific West Region Accessibility Self-Evaluation and Transition Planning SharePoint site (<https://doimsp.sharepoint.com/sites/nps-PWR-AccessibilitySETP?CT=1649343052705&OR=OWA-NT&CID=204c2563-b913-0894-1cae-52bc8f021fcf>). In the near future, this information will be available to all NPS staff and will be uploaded to the Park Facility Management Division's "Accessibility for Visitors and Employees with Disabilities" web page (<https://doimsp.sharepoint.com/sites/nps-pfmd/SitePages/Access-for-Visitors-and-Employees-with-Disabilities.aspx>). This information includes specific accessibility resources for concessions, facilities and maintenance, interpretation and education, and law enforcement staff. Resources include the following:

- A glossary of accessibility terms
- Reference information and links to laws and policies
- Accessibility assessment checklists and videos
- Accessibility training links and materials
- Templates that help track and document accessibility actions and an accessibility guide
- Guidance for making historic sites accessible
- Guidance for service animals in parks, accessible publications and programs, signage, and audio description
- Disability dialogue information and trainings
- Guidance for preparing PMIS packages for accessibility improvements

Trail assessment protocols and summary sheets

APPENDIX C: CONTRIBUTORS

NAME	ROLE
PIRO TEAM	
Dave Horne	Superintendent
Lara Bender	POC & Environmental Protection Specialist
Geoff Avery	Administrative Officer
Andrew Bishop	Chief of Science and Resources
Kevin Swenson	Facilities
Joseph Hughes	Chief Ranger
Steve Howard	Chief of Facilities
Alisa Hardin-Lapp	Chief of Interpretation and Education
MWR TEAM	
Laura Rich Acosta	Chief of Facility and Asset Management
Seth Nelson	Regional MAT coordinator
Mary Brown	
DSC TEAM	
Devon Vig	Landscape Architect
Madeleine Aguilar Medrano	Landscape Architect
Shannon Sawyer	Former Project Manager
Amy Hoke	Project Manager

PICTURED ROCKS NATIONAL LAKESHORE ACCESSIBILITY SELF-EVALUATION AND TRANSITION PLAN MARCH 2026

This accessibility self-evaluation and transition plan has been prepared as a collaborative effort between Pictured Rocks National Lakeshore staff, Regional Office staff serving Interior Regions 3,4 and 5 and Denver Service Center staff and is recommended for approval by the superintendent.

Approved

Date

Dave Horne Superintendent, Pictured Rocks National Lakeshore



As the nation’s principal conservation agency, the Department of the Interior has responsibility for most of our nationally owned public lands and natural resources. This includes fostering sound use of our land and water resources; protecting our fish, wildlife, and biological diversity; preserving the environmental and cultural values of our national parks and historic places; and providing for the enjoyment of life through outdoor recreation. The department assesses our energy and mineral resources and works to ensure that their development is in the best interests of all our people by encouraging stewardship and citizen participation in their care. The department also has a major responsibility for American Indian reservation communities and for people who live in island territories under U.S. administration.

[Park] [eTIC number ###/#####]

[Month and year]

[Back Cover]