

An aerial photograph of a park area. A red outline marks a specific site in the upper left quadrant. The park features various green spaces, paths, and a large circular structure in the lower left. The text is overlaid on the image.

Vietnam Veterans Memorial Visitor Center

Public Scoping Meeting

September 15, 2011

Agenda

Welcome and Purpose of Meeting

- Robert Vogel, Superintendent, National Mall and Memorial Parks, effective July 27, 2011**

Project Background

- Dan Reese, Vietnam Veterans Memorial Fund**

NEPA and Section 106 Process and Issues

- Alan Harwood, AECOM**

Design Overview

- Tom Wong, AIA, Associate Partner, Ennead Architects, LLP, designers for the Vietnam Veterans Memorial Fund**

Opportunity for Public Comment

Agenda

Welcome and Purpose of Meeting

Robert Vogel, Superintendent, National Mall and Memorial Parks, effective July 27, 2011

Purpose of Meeting

- **Continuation of 2003 Legislated Visitor Center and Environmental Compliance efforts begun 2005**
- **Present project background**
- **Discuss potential topics**
 - **Environmental impacts**
 - **Historic resources effects**
 - **Opportunities for public comment**
- **Present design alternatives**
- **Adjourn to stations**

Agenda

Project Background

Dan Reese, Vietnam Veterans Memorial Fund

Project Background

- **November, 2003, Congress enacted PL 108-126 authorizing the Vietnam Veterans Memorial Fund to construct a “visitors center”:**
 - **at or near the Vietnam Veterans Memorial.**
 - **to better inform and educate the public about the Vietnam Veterans Memorial and the Vietnam War.**
- **August 2006, conditioned approval of the visitors center site in the area bounded by Constitution Avenue, Lincoln Memorial Circle, and 23rd Street, NW as the site of the education center**
 - **Mitigations established by the National Capital Planning Commission Guidelines**

Site Location Map



Agenda

NEPA and Section 106 Process and Issues

Alan Harwood, AECOM

Lead Agency



Project Sponsor



Cooperating Agency



Purpose and Need

- **Purpose is to establish an education center for the Vietnam Veterans Memorial to:**
 - *“Better inform and educate the public about the Vietnam Veterans Memorial and the Vietnam War”*
 - *“Provide for appropriate educational and interpretive functions”*
- **Opportunity to enhance the visitor experience to the Memorial**

Authorizing Legislation

- **Public Law 108-126 authorizes the Vietnam Veterans Memorial Fund to construct a visitor center:**
 - The visitor center shall be located underground.
 - The size of the visitor center shall be limited to the minimum necessary to
 - *“provide for appropriate educational and interpretive functions”*
 - *“prevent interference or encroachment on the Vietnam Veterans Memorial and to protect open space and visual sightlines on the Mall”*
 - The visitor center shall be constructed and landscaped in a manner harmonious with the site of the Vietnam Veterans Memorial, consistent with the special nature and sanctity of the Mall.
- **Authorization provides the opportunity to the NPS:**
 - **“To work side by side with the volunteers and educators from the Memorial Fund and other veterans organizations in assisting visitors as they seek a better understanding of the memorial and our involvement in the war.”**

Congressional Record- House H9404, October 15, 2003

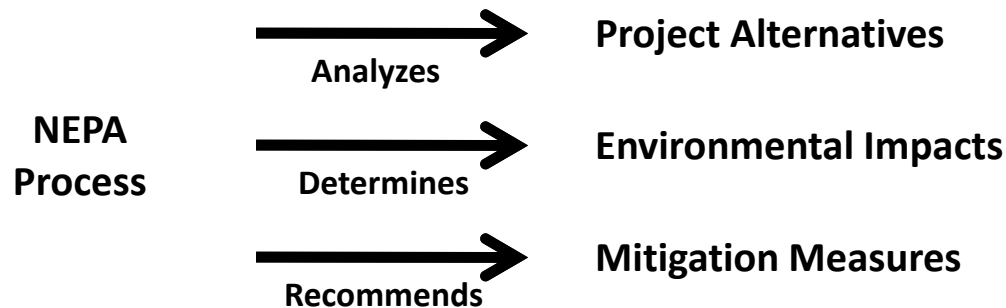
What is NEPA?

- NEPA

National Environmental Policy Act of 1969

—————→ (NEPA; Public Law 91-190; 42 U.S.C. 4321 *et seq*)

- Established a national policy for **protecting the environment** and requires evaluation of alternative actions
- Goal: To ensure **informed decision-making**
- Can conclude with an EA and Finding of No Significant Impact (FONSI) or an EIS and Record of Decision (ROD)



What is Section 106?

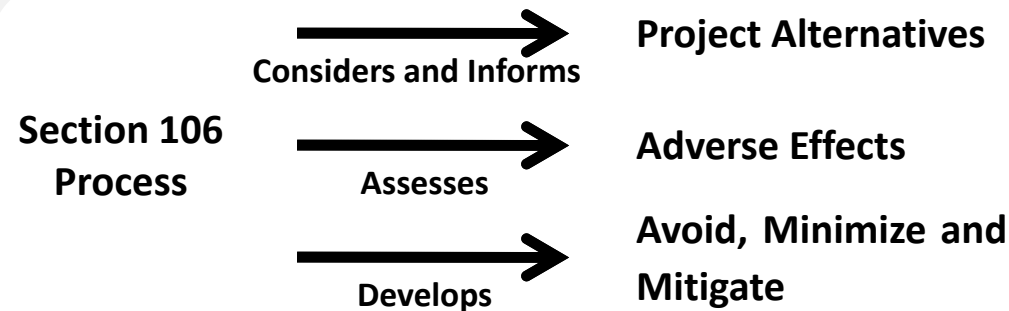
- Section 106

Component of National Historic Preservation Act of 1966

(NHPA; Public Law 89-665; 16 U.S.C. 470 *et seq.*)



- Established a process to **protect resources** listed on, or eligible for listing on, the National Register of Historic Places, and requires the consideration of alternatives if effects on historic resources are anticipated
- Goal: To **minimize potential harm** and damage to historic properties
- Can conclude in a Memorandum of Agreement with Consulting Parties



Site Selection and Design Approvals

May 2006: Site Alternatives Evaluated to **Avoid** impact to Historic Resources



August 2006: Site Approval with **Mitigation** Guidelines



December 2007: Concepts presented to National Capital Planning Commission to coordinate design with 2006 NCPC site approval- **Mitigation** Guidelines

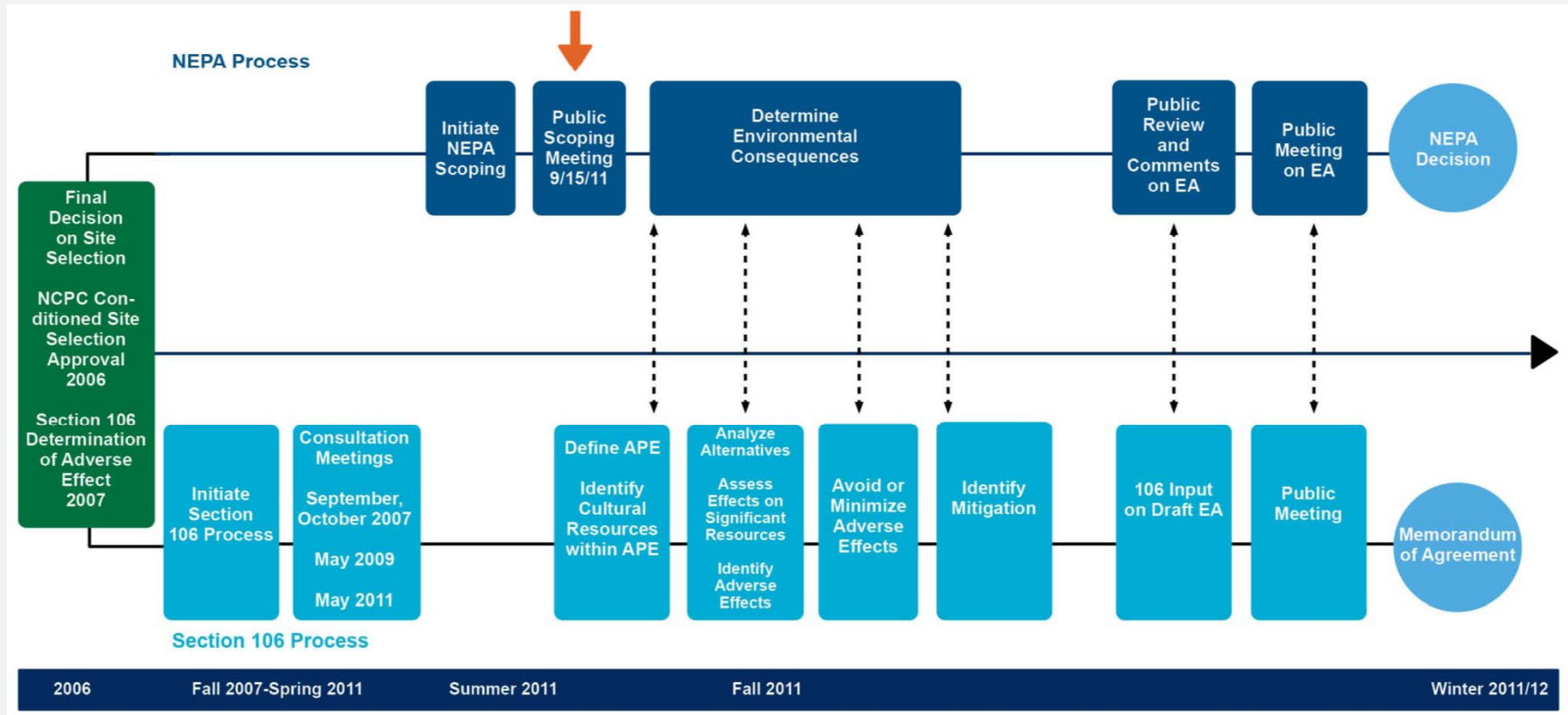


June 2009: Concept presented to NCPC to coordinate design with 2006 NCPC **Mitigation** Guidelines- **Minimize**

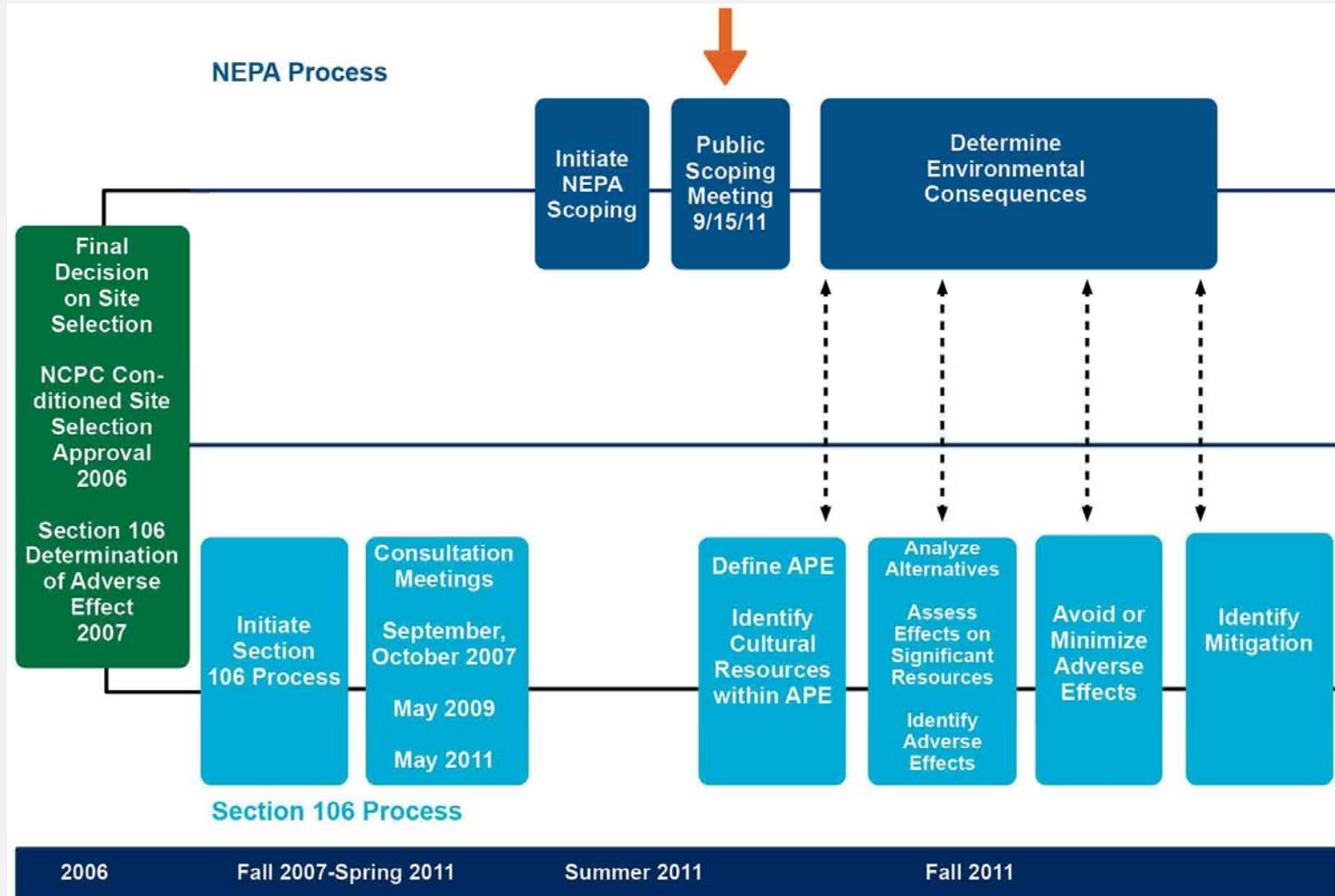


November 2011: Concept to be presented for Preliminary Approval and to further coordinate design with 2006 NCPC- **Mitigation** Guidelines

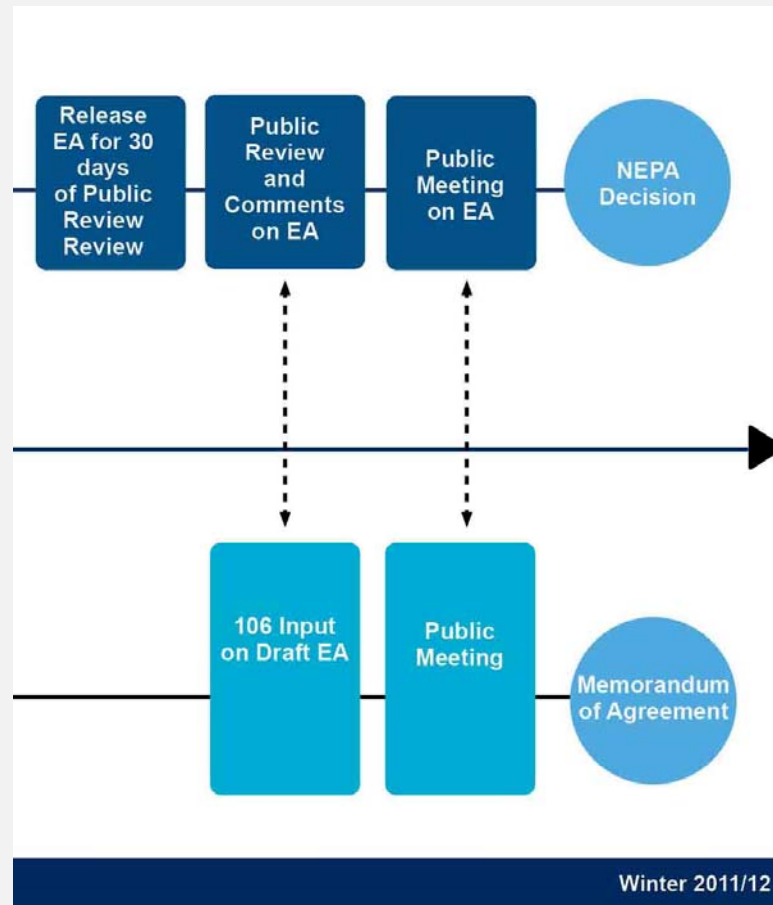
NEPA and Section 106 - A Coordinated Approach



NEPA and Section 106 – Summer 2011



NEPA and Section 106 – Fall and Winter 2011/2012



Section 106 Participants

- **State Historic Preservation Office**
- **Advisory Council on Historic Preservation**
- **National Capital Planning Commission**
- **Commission of Fine Arts**
- **National Trust for Historic Preservation**
- **Rimantas Saikus, Equal Honor for All**
- **Dan Kirby, Vietnam Veteran**
- **Volunteers, Vietnam Veterans Memorial**
- **Charles W. Dyke, (LTG, Army retired)**
- **Vietnam Veterans Memorial Fund**
- **General Public**

What Issues Will the EA Address?

- **Cultural Resources**

- Historic Resources
- Cultural Landscapes
- Archeology
- Visual Resources
- Museum Collections

- **Transportation**

- Traffic Operations
- Pedestrian Circulation

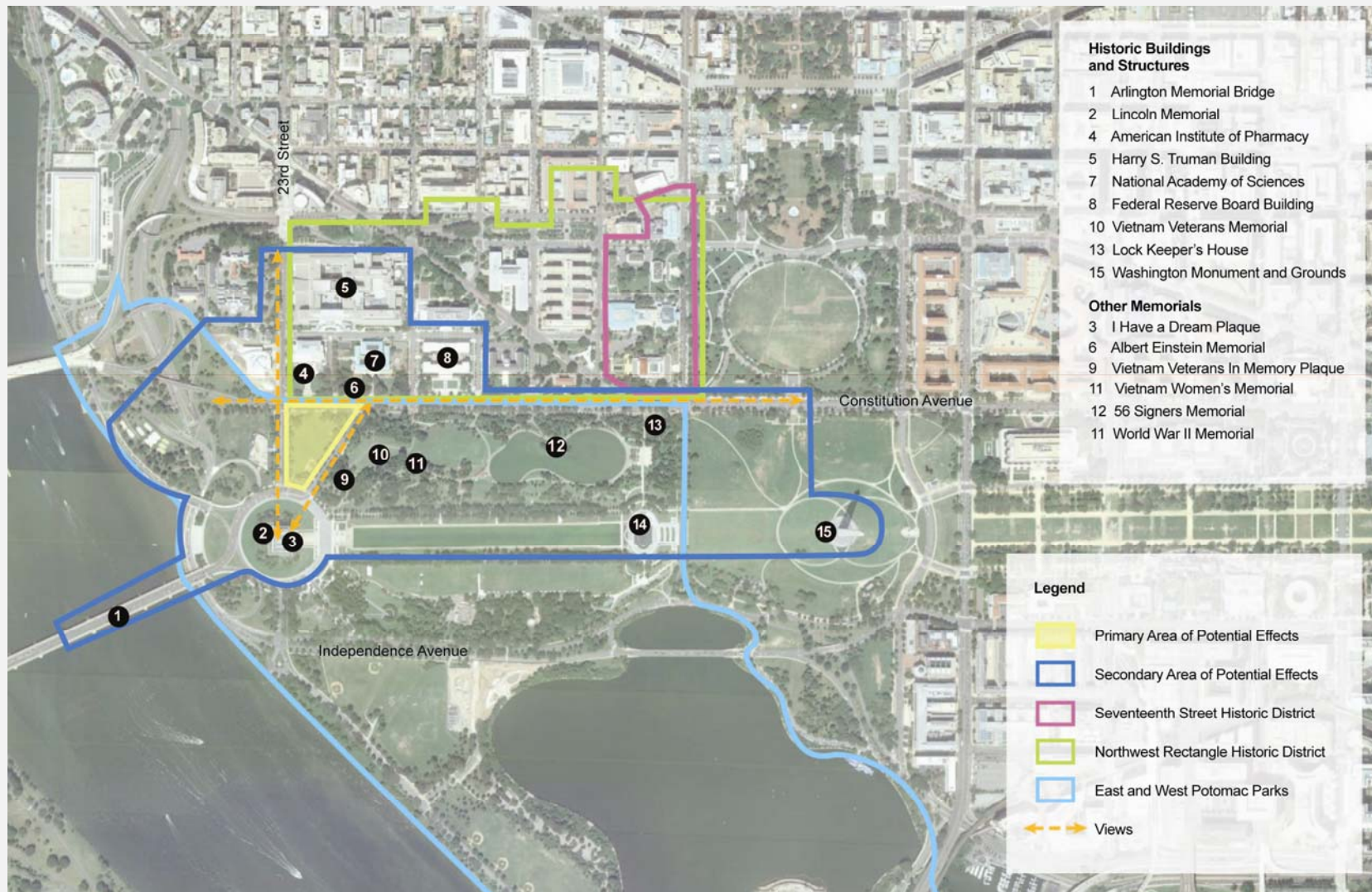
- **Natural and Physical Resources**

- Soils
- Vegetation
- Water Resources
- Stormwater

- **Other Issues**

- Land Use
- Urban Systems
- Park Operations
- Visitor Use and Experience
- Health and Safety

Section 106/Historic Resources



How Can You Submit Comments?

- **During this Meeting**

- **Comment Cards**
- **Comment Stations**
- **Court Reporter**

- **After this Meeting**

- **On-line:** <http://parkplanning.nps.gov/NAMA>

- **Fax:** (202) 401-0017

- **Written Comments can be sent to:**

Attn: Vietnam Veterans Memorial Education Center

NPS

1100 Ohio Drive, SW

Washington, DC 20242

Agenda

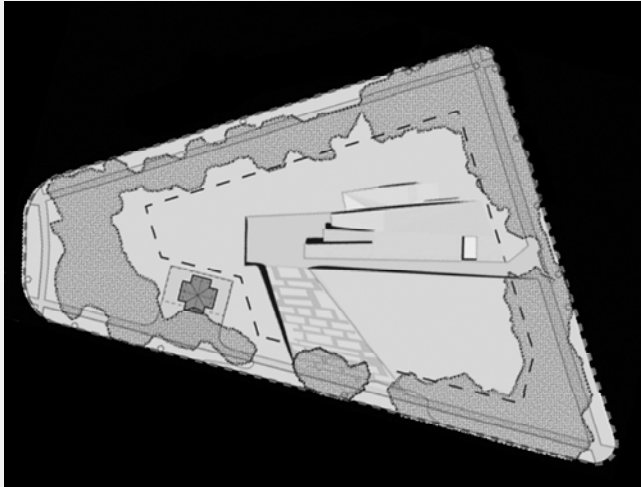
Design Overview

Tom Wong, AIA, Associate Partner, Ennead Architects, LLP, designers for the Vietnam Veterans Memorial Fund

Site Context Map



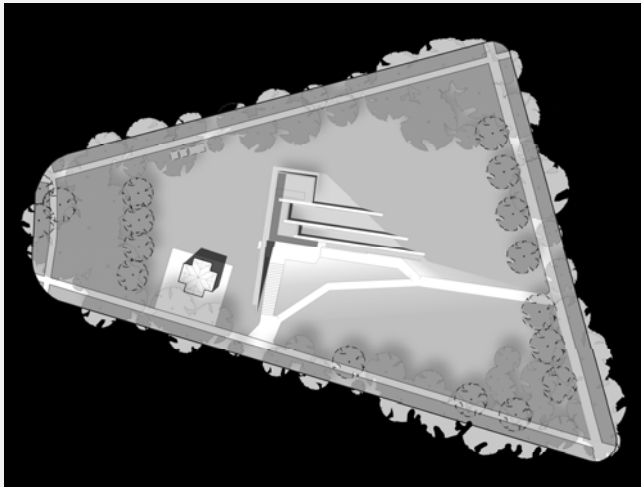
Previously Considered Design Options: Initial Concepts



2006

Design Concept

A Green Roof Rises Gradually 7'-0" from the Existing Site Grading With a Recessed Ramp Connecting the Sidewalk and Building's Entry.

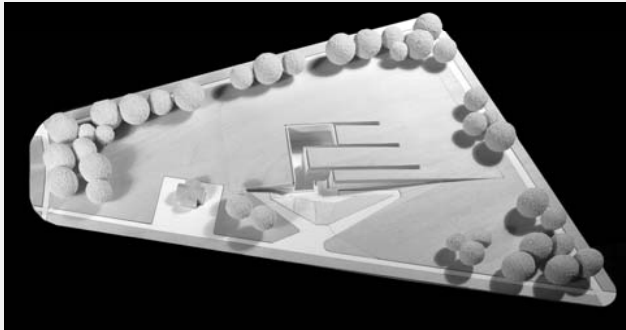


2007

Refinement of Design Concept

A Green Roof Rises Gradually 3'-6" from the Existing Site Grading with a Recessed Ramp and Stair Connecting the Sidewalk and Building's Entry.

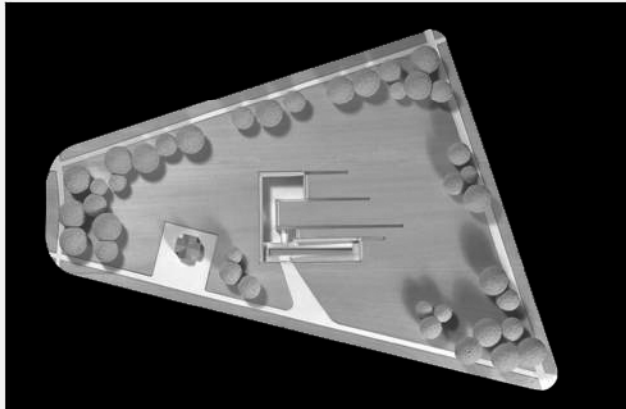
Previously Considered Design Options: Initial Concepts Fall 2007



Concept A

7'-0" Raise in Grade with Shallow Entry Ramp & Stair

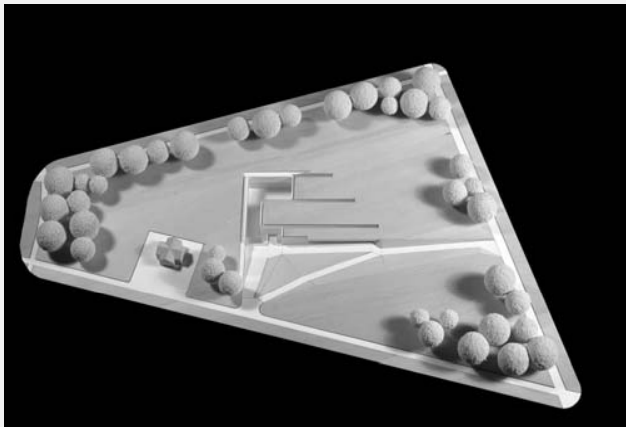
The first site concept gently mounds up the surrounding earth to reduce the amount of ramp required to descend down to the entry – 7 foot up and 7 foot down, yielding a ramp length of 140 feet at a slope of 1 foot in 20. Common to this and all subsequent alternatives is the courtyard and the parallel exhibit walls.



Concept B

Existing Grade with Ramp & Stair in Courtyard

Concepts B maintains the existing grade and ramps down the entire 14 feet from the sidewalk level. Concept B incorporates a 280 foot long approach ramp and stair within an extended courtyard. The ramp is incorporated into the architecture.

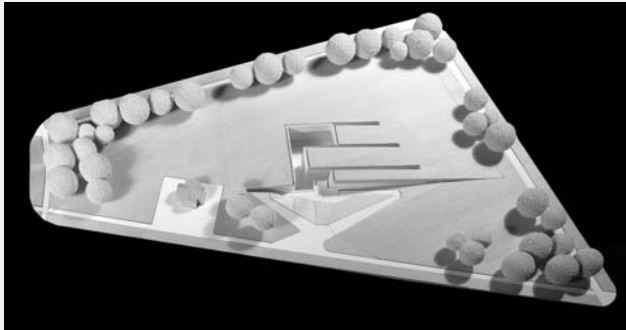


Concept C

Existing Grade with Ramp & Stair in Landscape

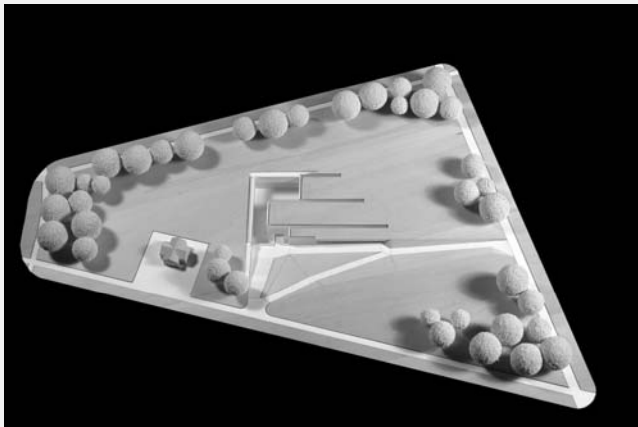
Concept C also maintains the level of existing grade, but incorporates the 280 foot long approach ramp and more commodious stair into a gradual downward sloping grassy area. Here, the approach to the building is incorporated not into the courtyard, but is integrated into the landscape.

Current Designs Based on Combination of Two Initial Concepts



Concept A

7'-0" Raise in Grade with Shallow Entry Ramp & Stair

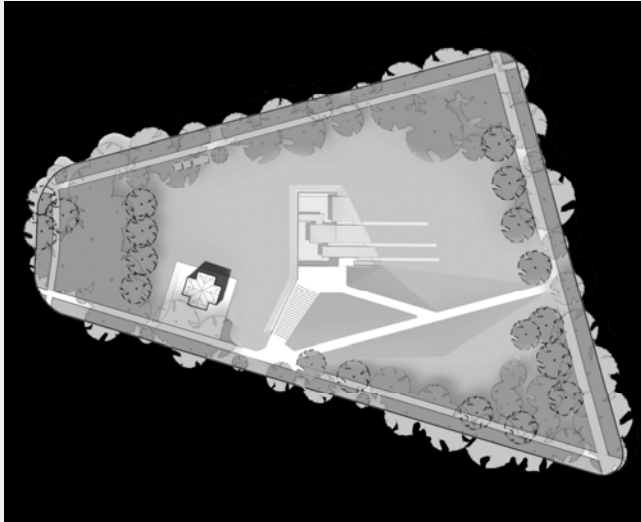


Concept C

Existing Grade with Ramp & Stair in Landscape

Design Direction:
Slight Raise in Grade (3'-6" above existing)
Entry Ramp & Stair integrated into
Landscape.

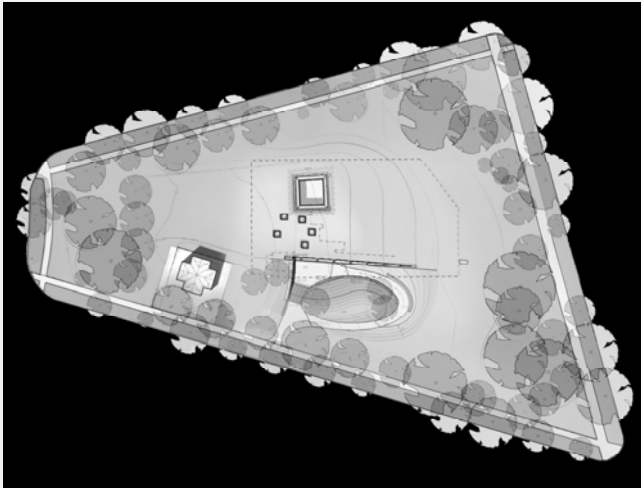
Previously Considered Options & Current Design: Refined Concepts



2009

Design Concept 1

A Green Roof Rises Gradually 3'-6" from the Existing Site Grading With a Recessed Ramp and Stair Connecting the Sidewalk and Building's Entry. The Amount of Exposed Building Face Along the Entry Ramp has been Reduced in Comparison to Earlier Designs.

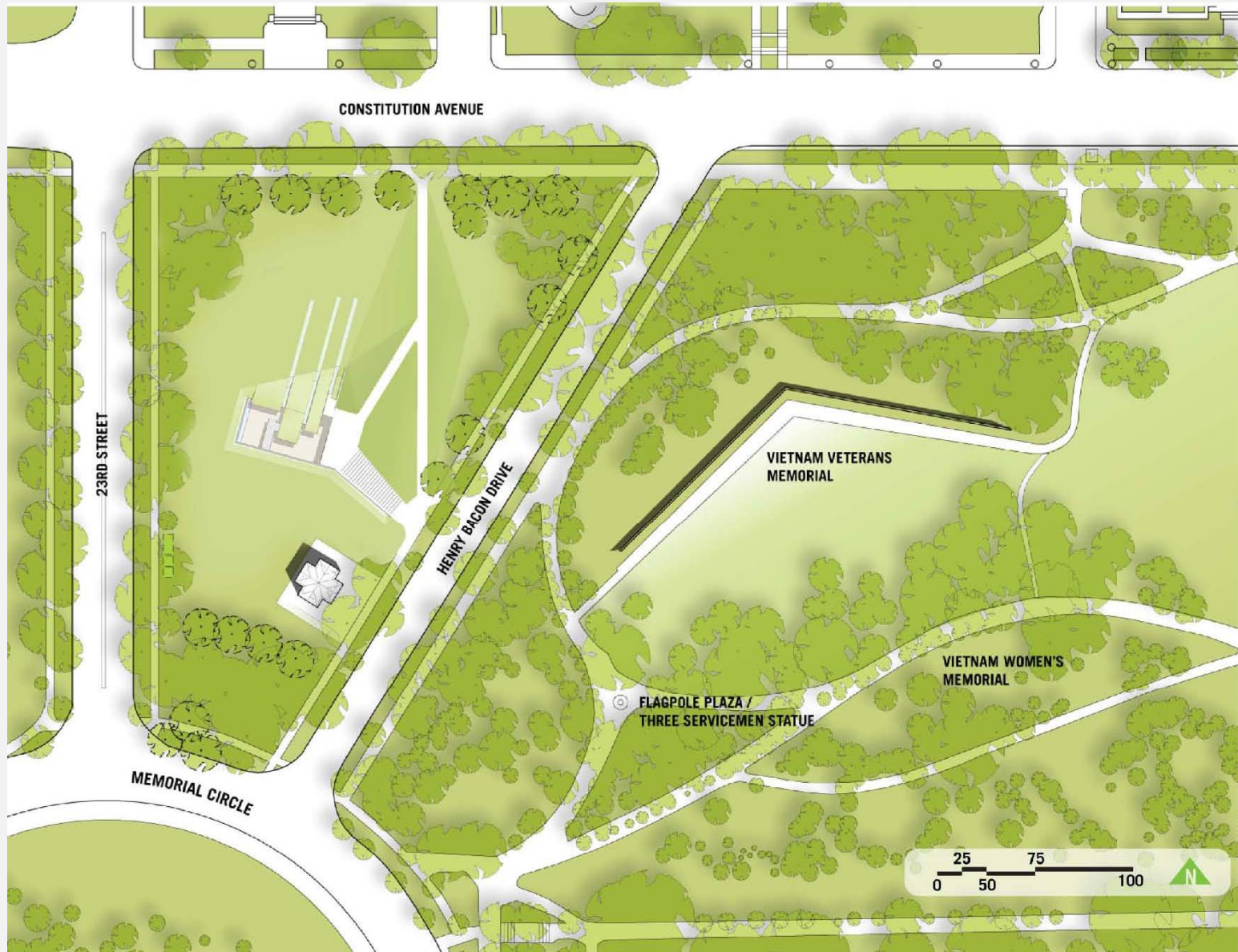


2011

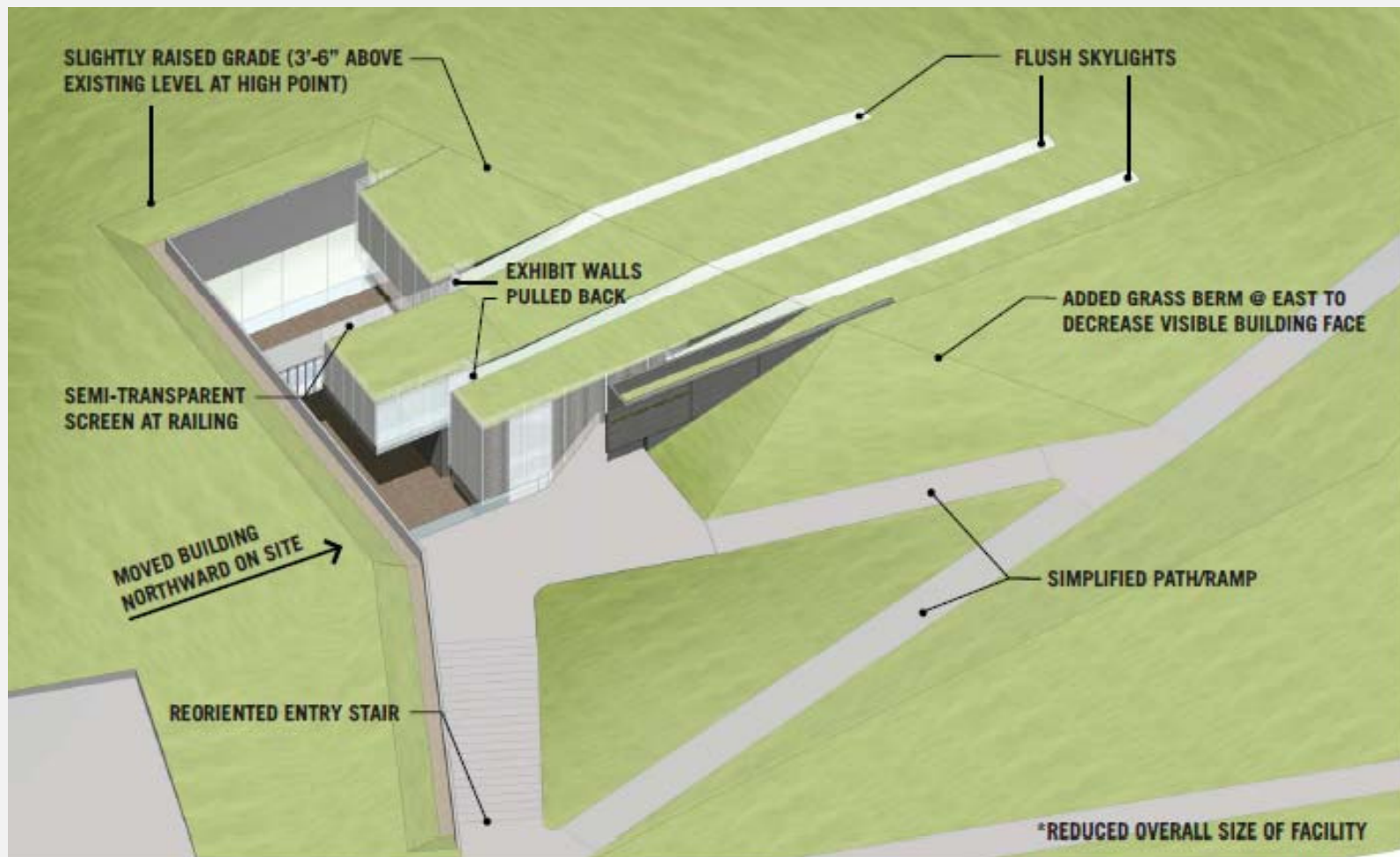
Design Concept 2

A Green Roof Rises Gradually 3'-6" from the Existing Site Grading With a Recessed Ramp and Stair Connecting the Sidewalk and Building's Entry. The Amount of Exposed Building Face has been Further Reduced Relative to Concept 1. The Layout of Entry Ramp and Stair has also been Simplified in Comparison to Concept 1. The Courtyard has been Covered and Natural Light Inside the Building is Provided by Skylights in the Green Roof.

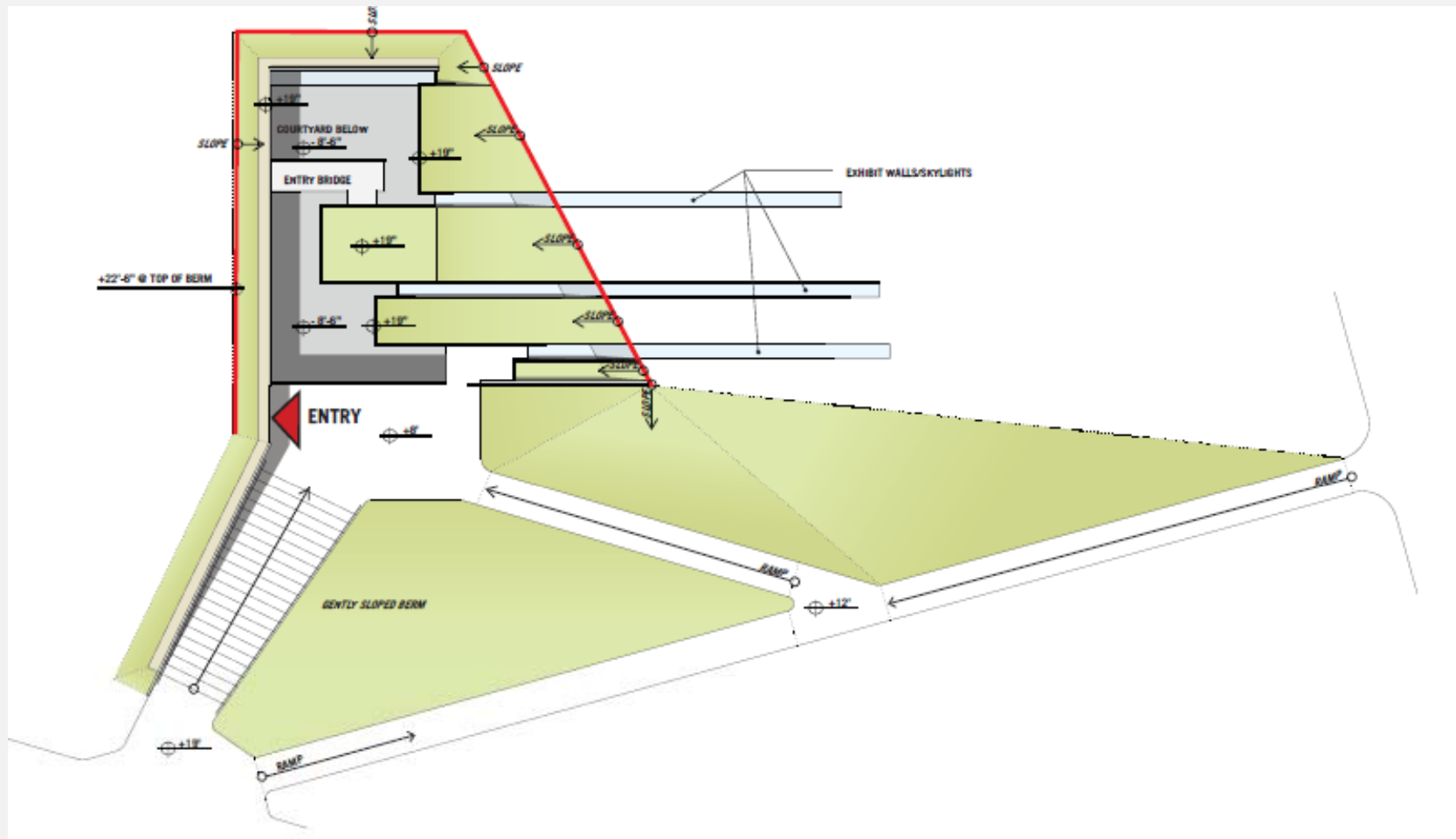
Site Plan– Alternative 1



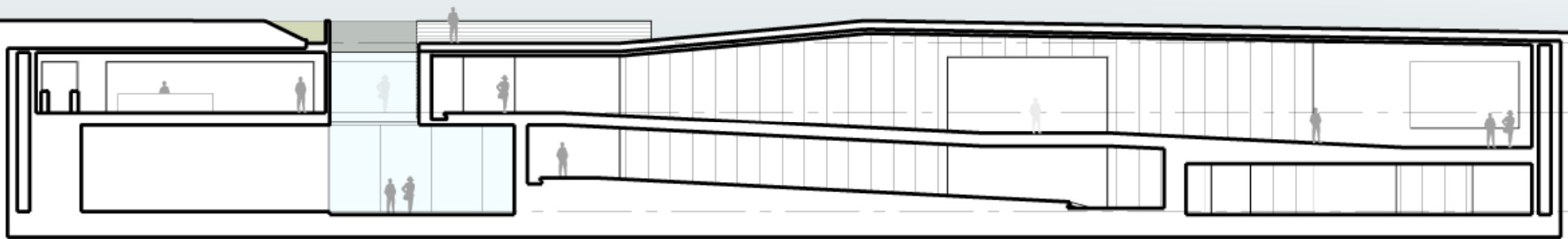
Axonometric– Alternative 1



Roof Plan– Alternative 1



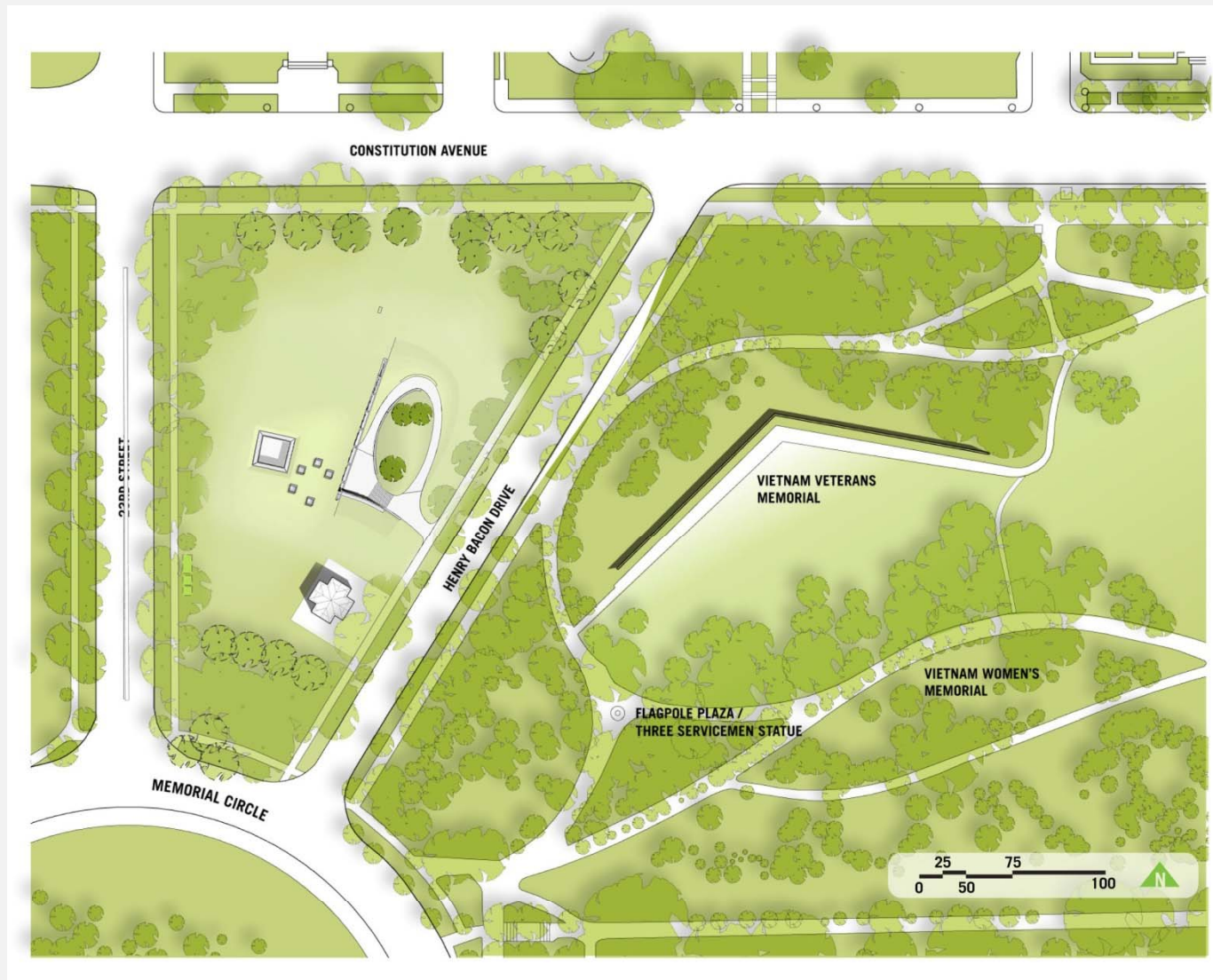
North-South Section– Alternative 1



Entry Perspective from Sidewalk– Alternative 1



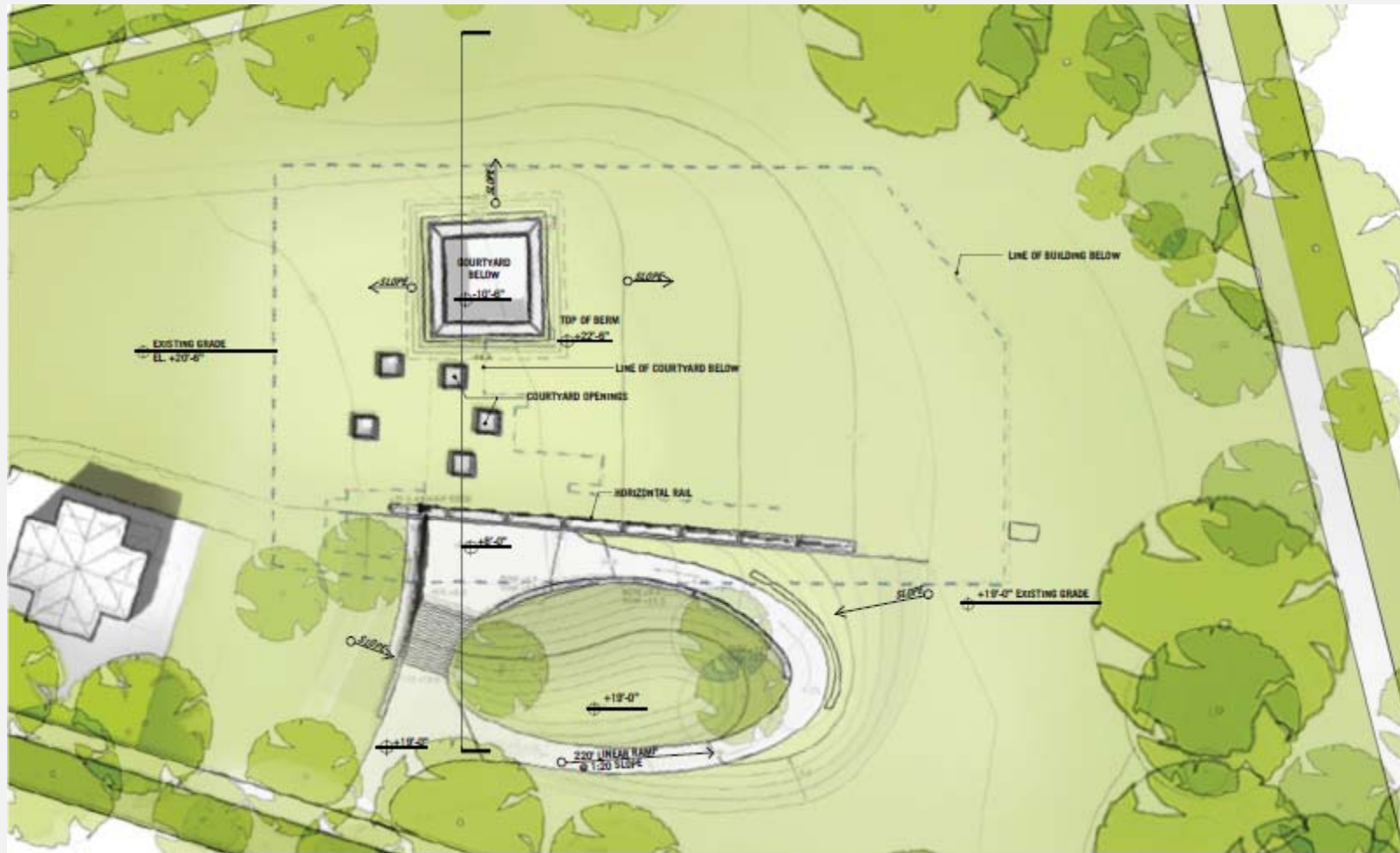
Site Plan– Design Alternative 2



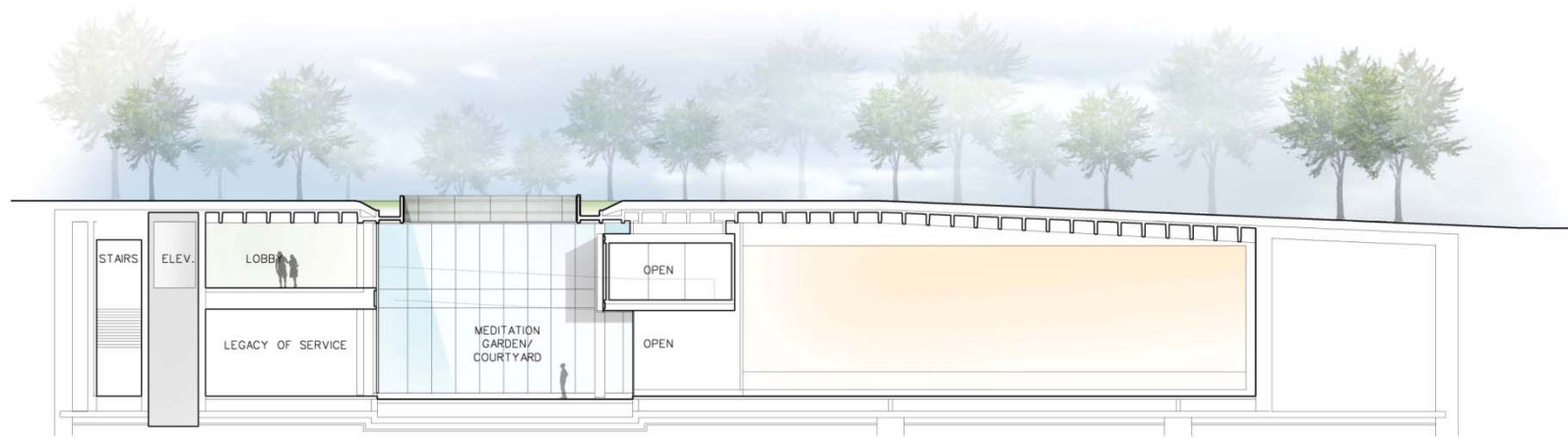
Axonometric– Alternative 2



Roof Plan– Alternative 2



North-South Section– Alternative 2



Entry Perspective from Sidewalk– Alternative 2



Agenda

Opportunity for Public Comment