



National Park Service  
U.S. Department of the Interior

Great Sand Dunes National Park  
and Preserve  
11500 Highway 150  
Mosca, CO 81146-9798

First Class Mail  
Postage and Fees  
**PAID**  
National Park Service  
Permit No. G83

EXPERIENCE YOUR AMERICA

### Meeting Schedule

The National Park Service has scheduled public scoping meetings at the following locations:

**Monday, November 14**

Alamosa Recreation Center  
2222 Old Sanford Road  
Alamosa, CO  
6–8p.m.

**Tuesday, November 15**

Baca Grande POA Meeting Hall  
68575 County Road T  
Crestone, CO  
5–8p.m.

If you are unable to attend a meeting, you may provide comments online or in writing by January 6, 2012

**Please note:** Before including your address, phone number, e-mail address, or other personal identifying information in your comment, you should be aware that your entire comment—including your personal identifying information—may be made publicly available at any time. Although you can ask us in your comment to withhold your personal identifying information from public review, we cannot guarantee that we will be able to do so.

### How to Provide Input

We need your input to identify any issues or concerns related to ungulate management in the park and to consider them in the planning process. You can provide input in three ways:

- 1.** Attend one of the public scoping meetings on November 14 or 15
- 2.** Submit comments electronically at the NPS planning website:  
<http://parkplanning.nps.gov/grsa-ungulates>
- 3.** Provide written comments to:  
**National Park Service**  
*Attention:*  
GRSA Ungulate Management Plan/EIS  
NPS-EQD Academy Place  
P.O. Box 25287  
Denver, CO 80225

Please submit all comments by January 6, 2012.

Great Sand Dunes National Park and Preserve  
Colorado

National Park Service  
U.S. Department of the Interior



# Ungulate Management Plan and Environmental Impact Statement

## Newsletter 1

November 2011

Dear Friends,

You are invited to participate in the planning process for the future management of ungulates at Great Sand Dunes National Park and Preserve. Since the expansion of Great Sand Dunes from a small national monument to a large national park and preserve, it has become necessary to develop a plan for ungulate grazing and management on these new lands.

Since 2004, the US Geological Survey (USGS) has been studying elk and bison in the park and on surrounding lands. There has also been interest in exploring the feasibility of establishing a population of semi-free ranging bison to the park.

As part of the internal scoping process, the National Park Service has met with management partners from other federal agencies and the Colorado Division of Wildlife to discuss management issues and opportunities to be addressed in this plan. The Park has also convened

a Science Team of technical experts to provide input during this preliminary scoping period.

Using input from scientists, management partners, and the general public, a plan will be developed to identify management and monitoring activities for elk, bison, and other ungulates in the park as well as achieving a balance between sustainable resource conditions and appropriate herd sizes for the park.

Your thoughts, ideas, issues, and concerns will play an important role in shaping this plan and the future management of ungulates in the park. We look forward to hearing from you.

Sincerely,

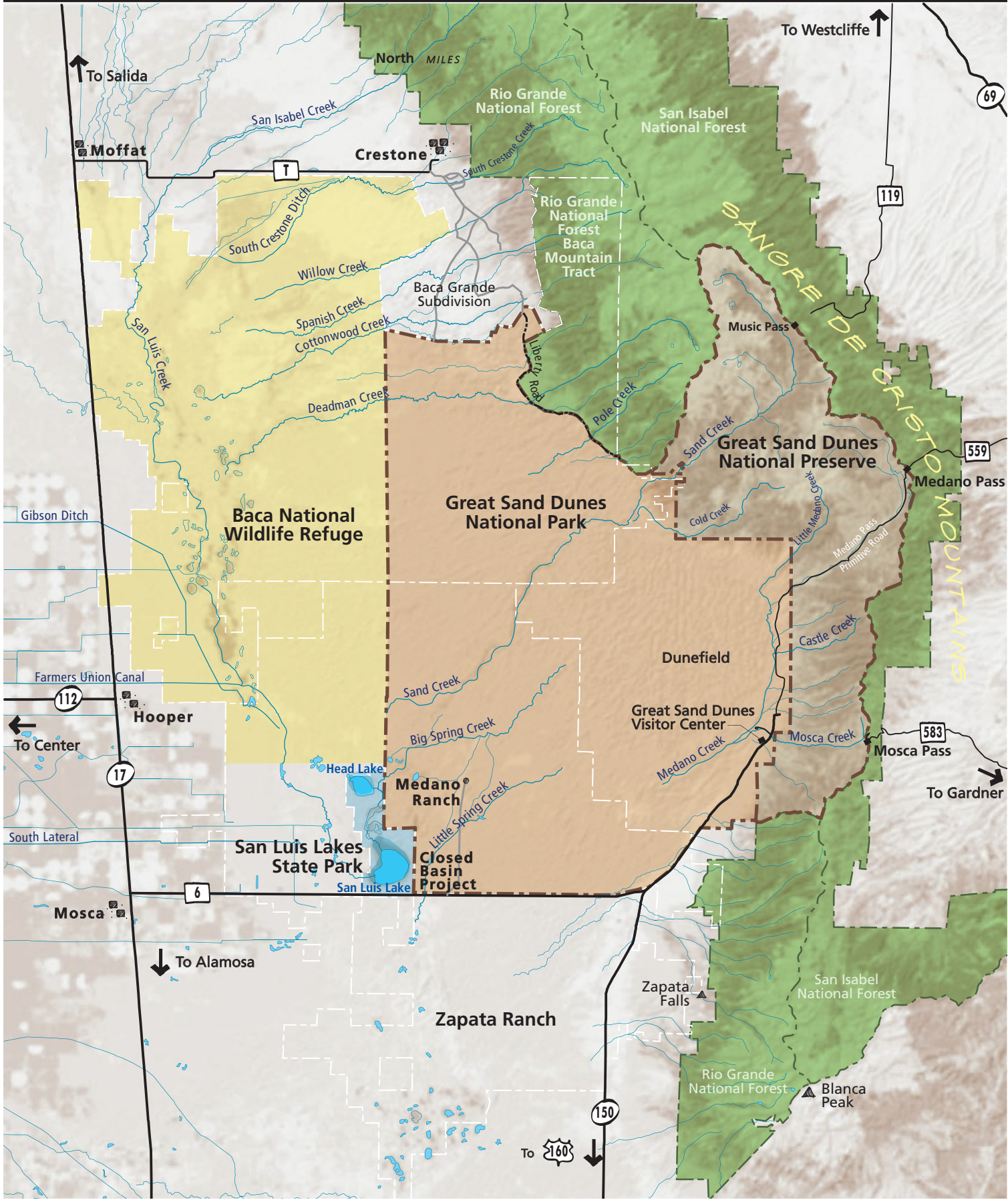
Karl Cordova, Acting Superintendent  
Great Sand Dunes National Park and Preserve





Vicinity

Great Sand Dunes National Park and Preserve



Purpose

The purpose of this plan/EIS is to establish a framework for the management of elk, bison and other ungulates that supports attainment of desired habitat conditions at Great Sand Dunes National Park and Preserve and is compatible with conditions and management activities across the broader eastern San Luis Valley Landscape.

Objectives

- Determine whether and how to establish a semi-free-ranging bison population, and the land area and management tools that would be necessary to do so.
- Incorporate long-term monitoring of habitat conditions and ungulate species.
- Identify a suite of ungulate management tools for use in the park and preserve, and a framework to guide how and when those tools would be used.
- Maintain natural processes, including disturbance regimes and movement patterns, to the extent possible.
- Provide ungulate management recommendations that balance a range of issues and concerns and are responsive to cooperating agencies, stakeholder organizations, local communities, and the interested public.
- Minimize wildlife-human conflicts across the landscape while supporting the attainment of desired habitat conditions and appropriate population and distribution of key species on park lands.



Questions to Consider

- What issues should the NPS consider when evaluating the possible establishment of a semi-free ranging bison population?
- What issues should the NPS consider when evaluating if and when management actions should be used to influence elk populations?
- What management tools should the NPS consider for managing elk, bison, and other ungulates?
- What other issues or opportunities should the NPS consider in this planning process?

Project Timeline

