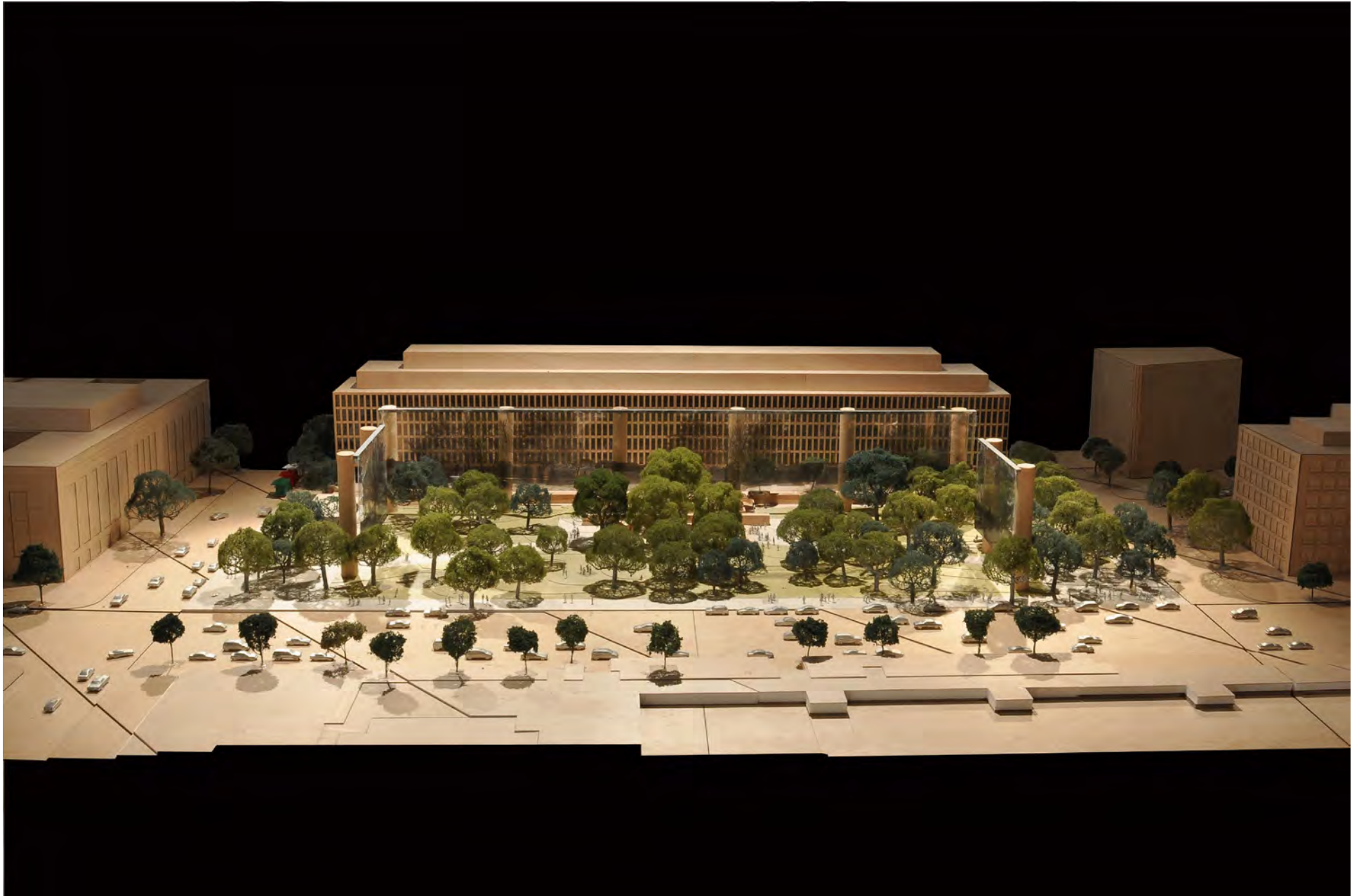


## **EISENHOWER MEMORIAL**

SECTION 106  
NOVEMBER 16th, 2011

I

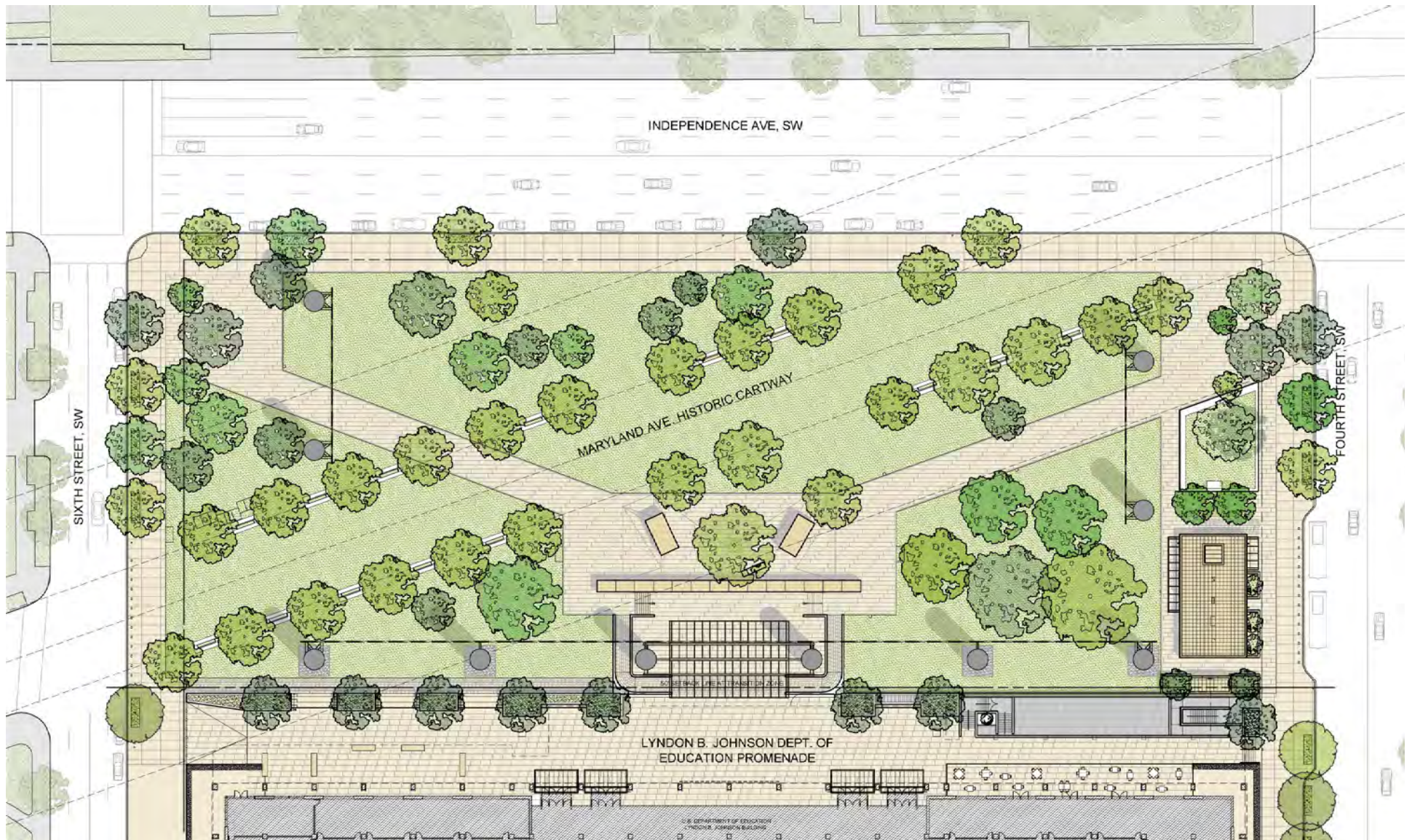
**OVERVIEW OF CURRENT SCHEME  
NOVEMBER 2011**



**DIAGRAM A1:** CURRENT DESIGN - 80' COLUMNS  
(92' CLEAR AT MARYLAND AVENUE)  
*AERIAL*

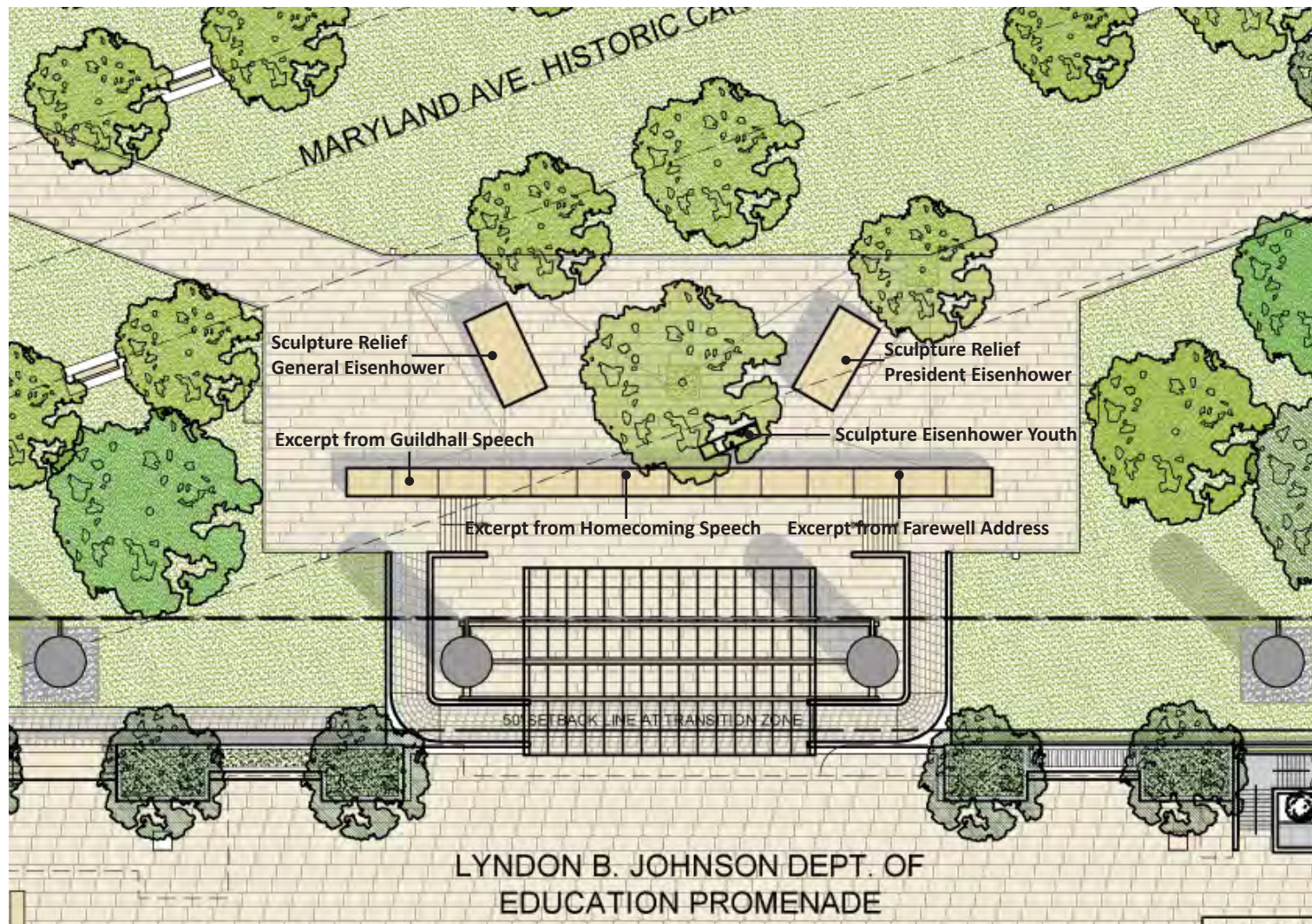
A





**OCTOBER 2011 DESIGN**  
SITE PLAN





OCTOBER 2011 DESIGN  
ENLARGED PLAN



*"Suaviter in modo, fortiter in re."  
"Gently in manner, strongly in deed."*

*"Because no man is really a man who has left out of himself all the boy, I wanted to speak first of the dreams of a barefoot boy.... Always in his dreams is the day when he finally comes home to a welcome from his hometown. Because today that dream of forty-five years ago has been realized beyond the wildest stretches of my own imagination, I came here to thank you and to say that the proudest thing I can claim is that I'm from Abilene...."*

- Homecoming Speech, Abilene, Kansas, June 22, 1945

### **General**

*"Humility must always be the portion of any man who receives acclaim earned in blood of his followers and sacrifices of his friends"*

- Guildhall Address, London, England, June 12, 1945

### **President**

*"We seek peace, knowing that peace is the climate of freedom."*

- Second Inaugural Address, January 21, 1957



**VIEW SOUTH TOWARDS MEMORIAL**  
Tapestry Height 80'





Excerpt from  
Farewell Address

Sculpture Relief  
President Eisenhower

Sculpture Eisenhower  
Youth

Excerpt from  
Homecoming  
Speech

Sculpture Relief  
General Eisenhower

Excerpt from  
Guildhall Speech





Sculpture Relief General Eisenhower



**Sculpture Relief President Eisenhower**





VIEW SOUTH TOWARDS MEMORIAL

## MEMORIAL CONCEPT



YOUNG EISENHOWER









**DIAGRAM A:** CURRENT DESIGN - 80' COLUMNS  
(92' CLEAR AT MARYLAND AVENUE)  
*VIEW ACROSS MARYLAND AVE TOWARDS CAPITOL*

A





**DIAGRAM A:** CURRENT DESIGN - 80' COLUMNS  
(92' CLEAR AT MARYLAND AVENUE)  
*VIEW ACROSS MARYLAND AVE TOWARDS CAPITOL*

A





**DIAGRAM A: CURRENT DESIGN - 80' COLUMNS**  
(92' CLEAR AT MARYLAND AVENUE)  
VIEW ACROSS MARYLAND AVE TOWARDS CAPITOL

A





**DIAGRAM A: CURRENT DESIGN - 80' COLUMNS**  
(92' CLEAR AT MARYLAND AVENUE)  
*VIEW SOUTH TOWARDS MEMORIAL*

A





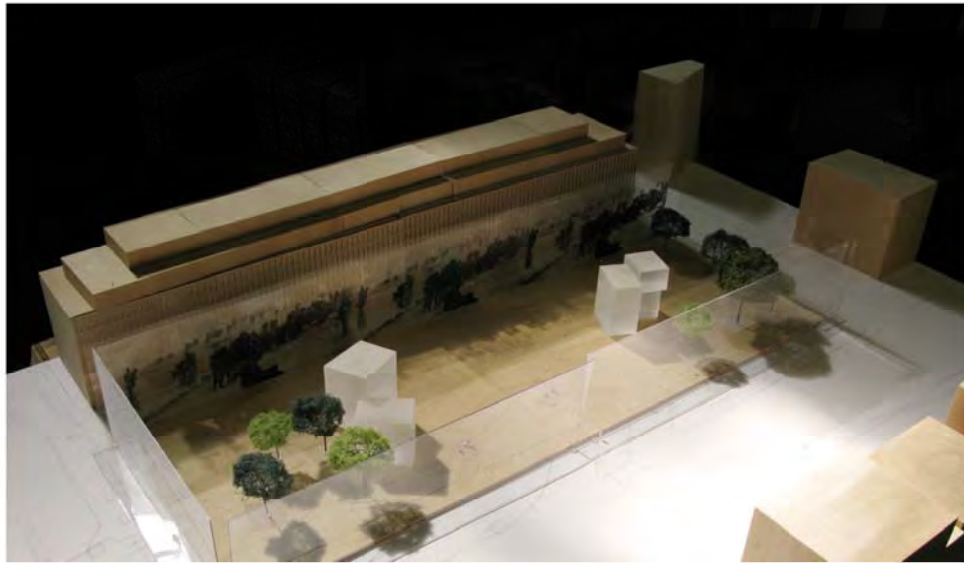
**DIAGRAM A: CURRENT DESIGN - 80' COLUMNS**  
(92' CLEAR AT MARYLAND AVENUE)  
*VIEW SOUTH TOWARDS MEMORIAL*

A



**II**

**RECAP OF PREVIOUS DESIGN STUDIES**



URBAN ROOM PRECINCT STUDY 3



URBAN ROOM PRECINCT STUDY 4

# EISENHOWER MEMORIAL GEHRY PARTNERS, LLP





MARYLAND ROADWAY STUDY



# EISENHOWER MEMORIAL GEHRY PARTNERS, LLP



PROSCENIUM STAGE STUDY 2 WITH MONUMENT ON MARYLAND AVENUE



# EISENHOWER MEMORIAL

GEHRY PARTNERS, LLP





TAPESTRY/COLUMN STUDY WITH 10' DIAMETER COLUMNS AND SOUTH TAPESTRY ONLY AT 80' HEIGHT.



# EISENHOWER MEMORIAL

GEHRY PARTNERS, LLP

# PRINCIPLES OF SEPTEMBER 2011 DESIGN

## DESIGN COMPARISON

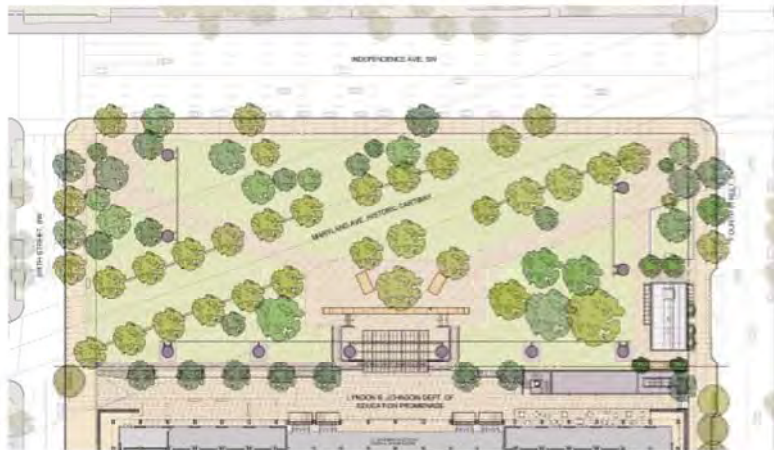


JANUARY 2011 DESIGN

THE ABOVE REPRESENTS THE PREFERRED DESIGN ALTERNATE 3 PRESENTED IN JANUARY 2011. MODIFICATIONS HAVE SINCE BEEN MADE IN RESPONSE TO THE AGENCY REVIEW, SECTION 106 AND NEPA PROCESS.



SEPTEMBER 2011 DESIGN



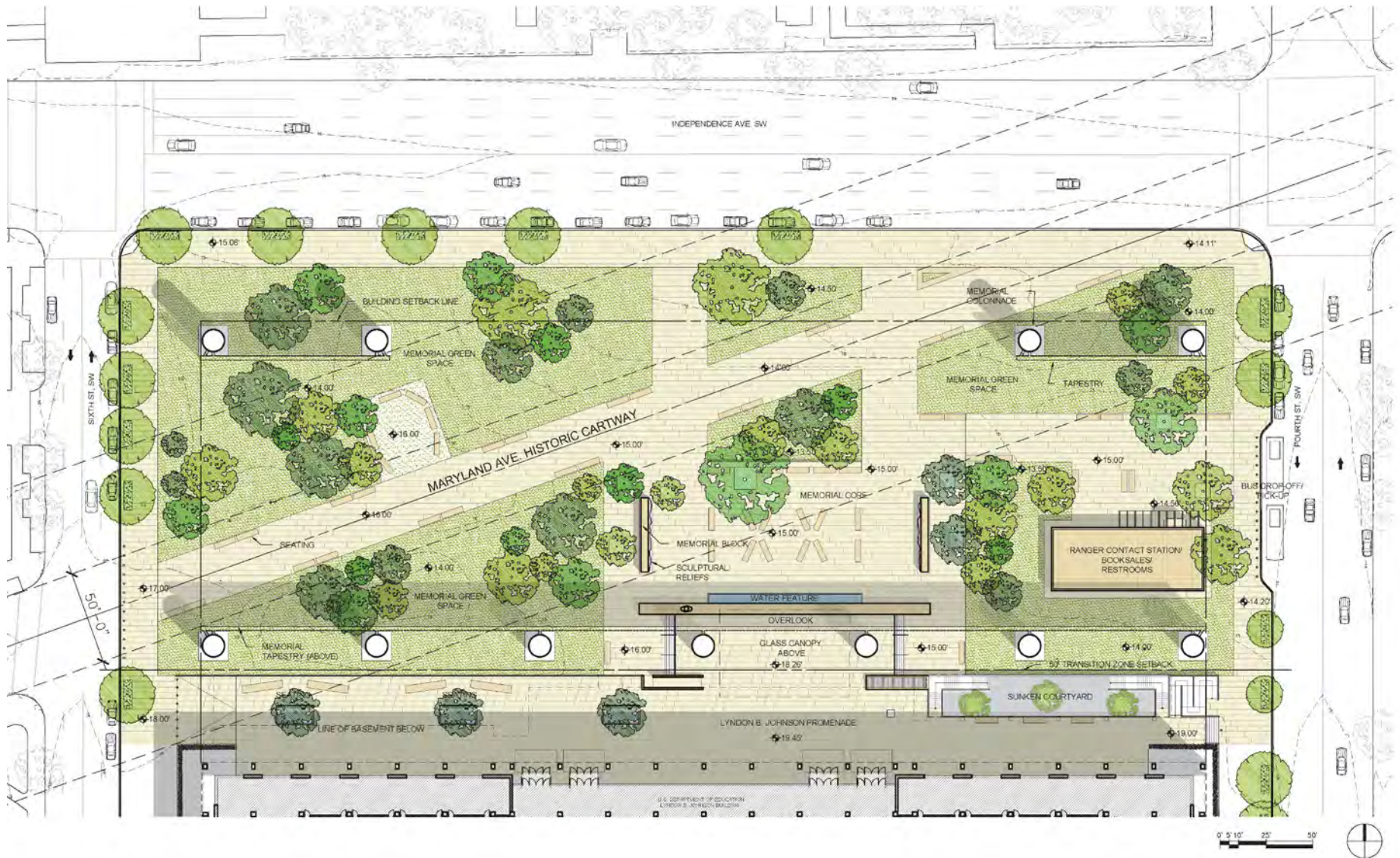
OCTOBER 2011 DESIGN

### MODIFICATIONS:

1. COLUMNS AND TAPESTRY RELATIONSHIP
2. PLANNING CENTERED ON LBJ
3. SHIFT OF MEMORIAL ELEMENTS
4. SHIFT OF SUPPORT BUILDING
5. LANDSCAPE AND GROUND PLANE PROGRESS

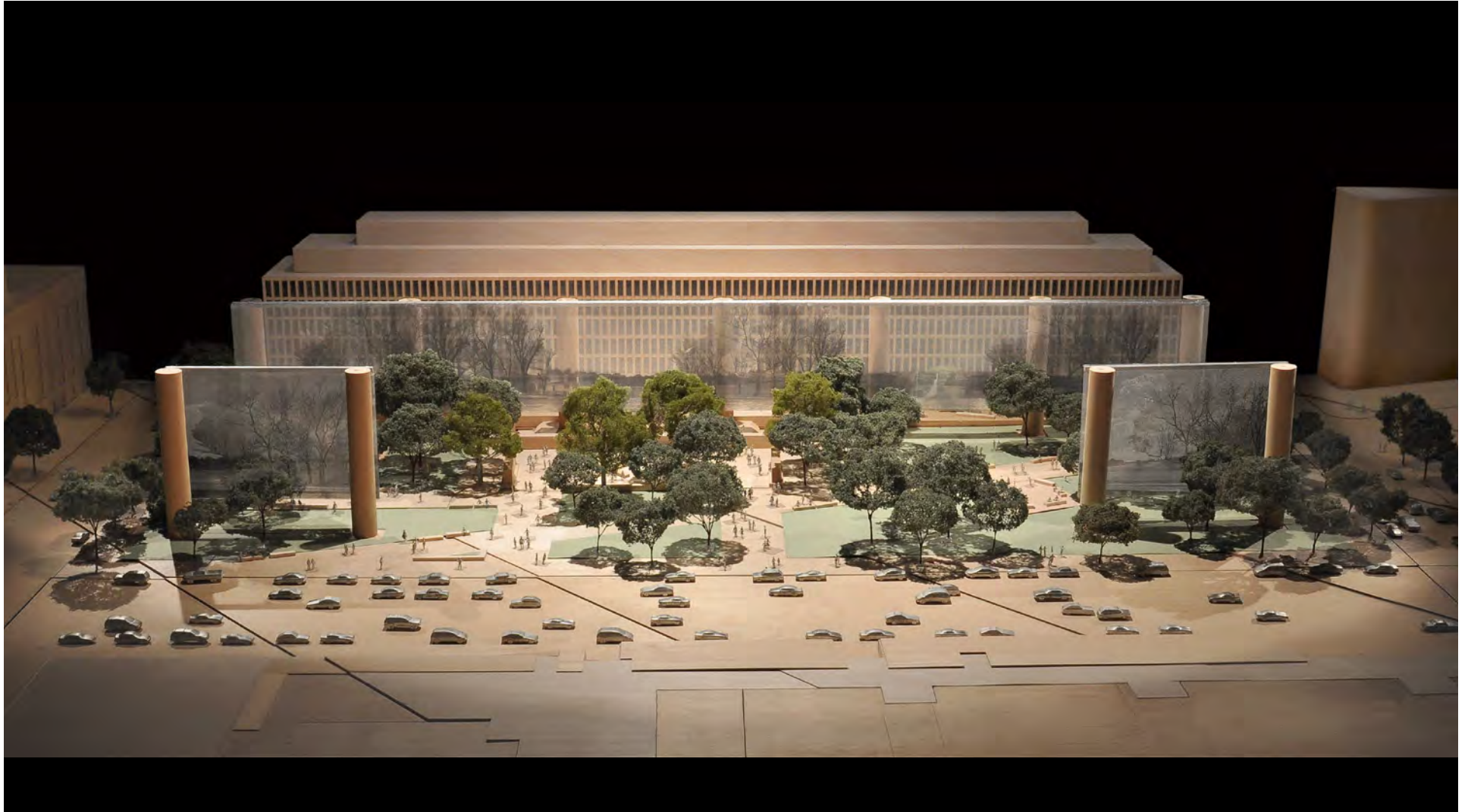


# JANUARY 2011 DESIGN



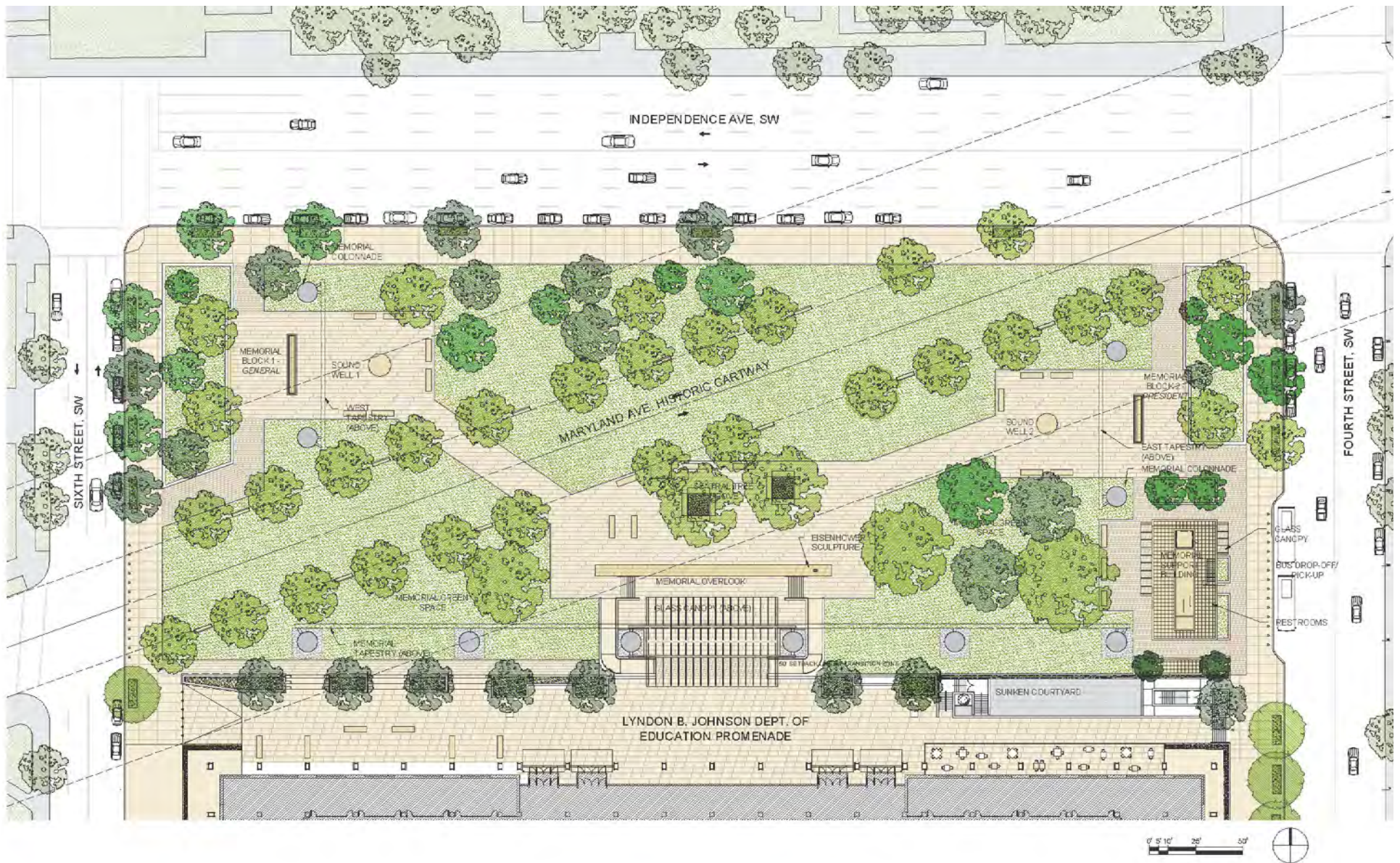
JANUARY 2011 DESIGN: SITE PLAN





JANUARY 2011 DESIGN: AERIAL VIEW





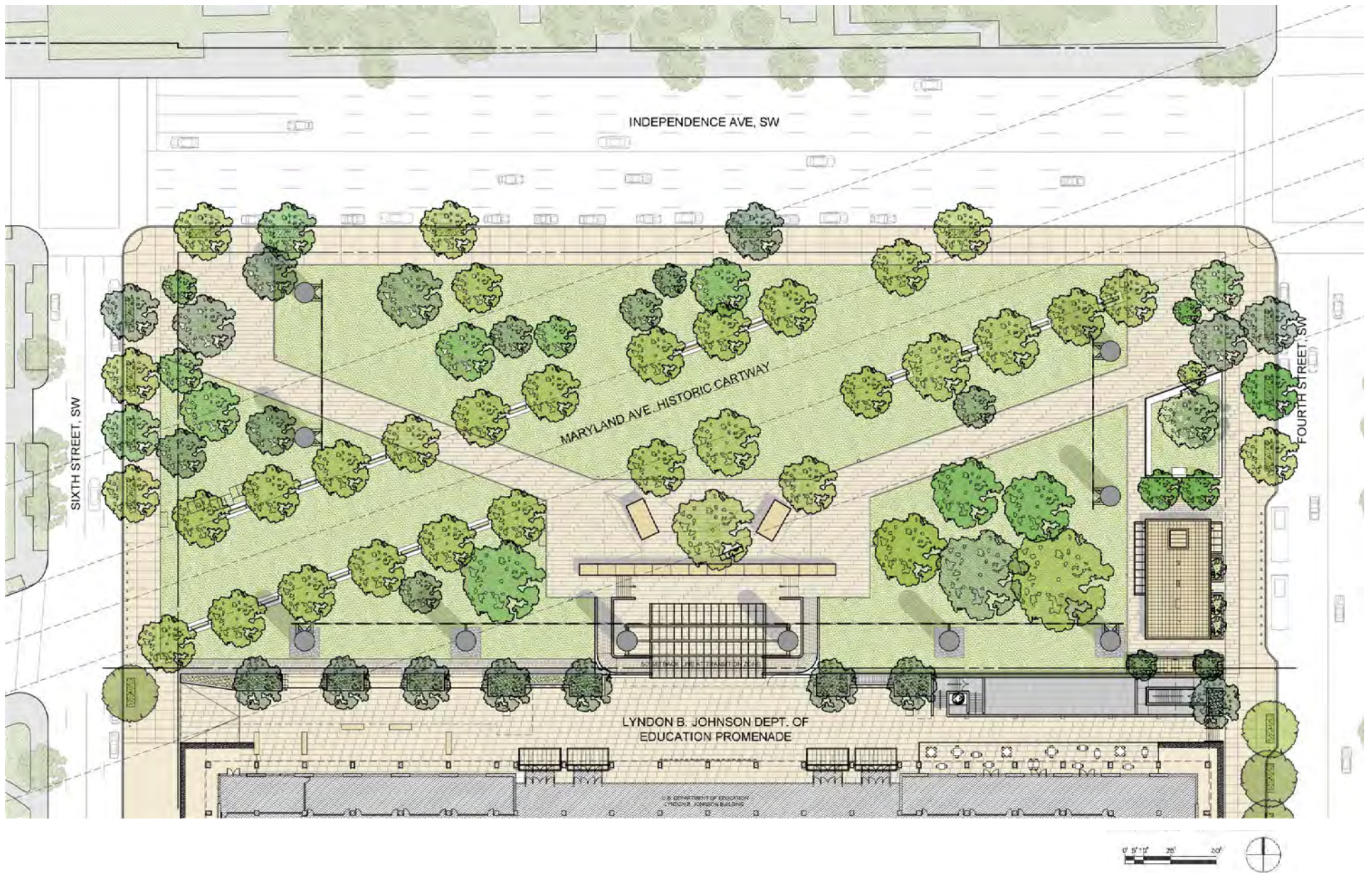
SEPTEMBER 2011 DESIGN: SITE PLAN





SEPTEMBER 2011 DESIGN: WINTER, ELEVATION VIEW





**OCTOBER 2011 DESIGN**  
SITE PLAN