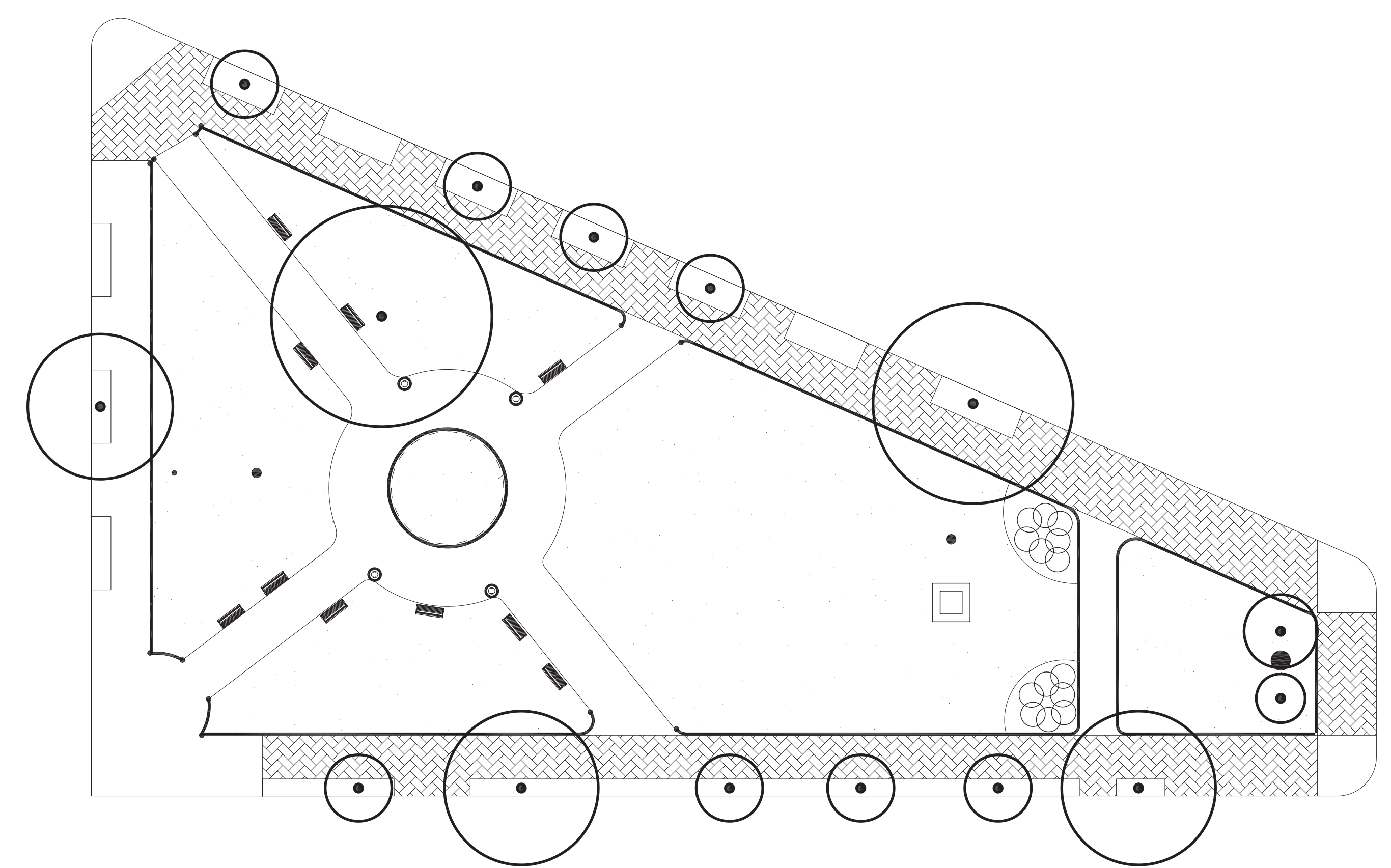


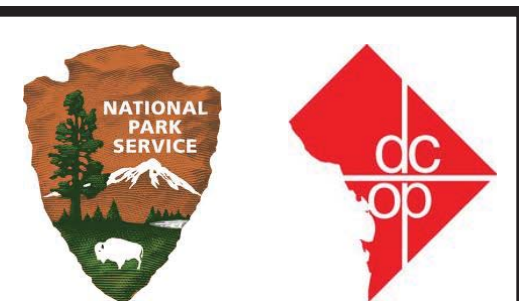
Locator Map



Existing Layout - Scale: 1" = 20' - 0"

Table of Contents:

- 1. Title Page
- 2. Existing Conditions Plan
- 3. Demolition Plan
- 4. Site Plan
- 5. Layout Plan
- 6. Grading Plan
- 7. Planting Plan
- 8. Plant Schedule and Details
- 9. Construction Limits Plan





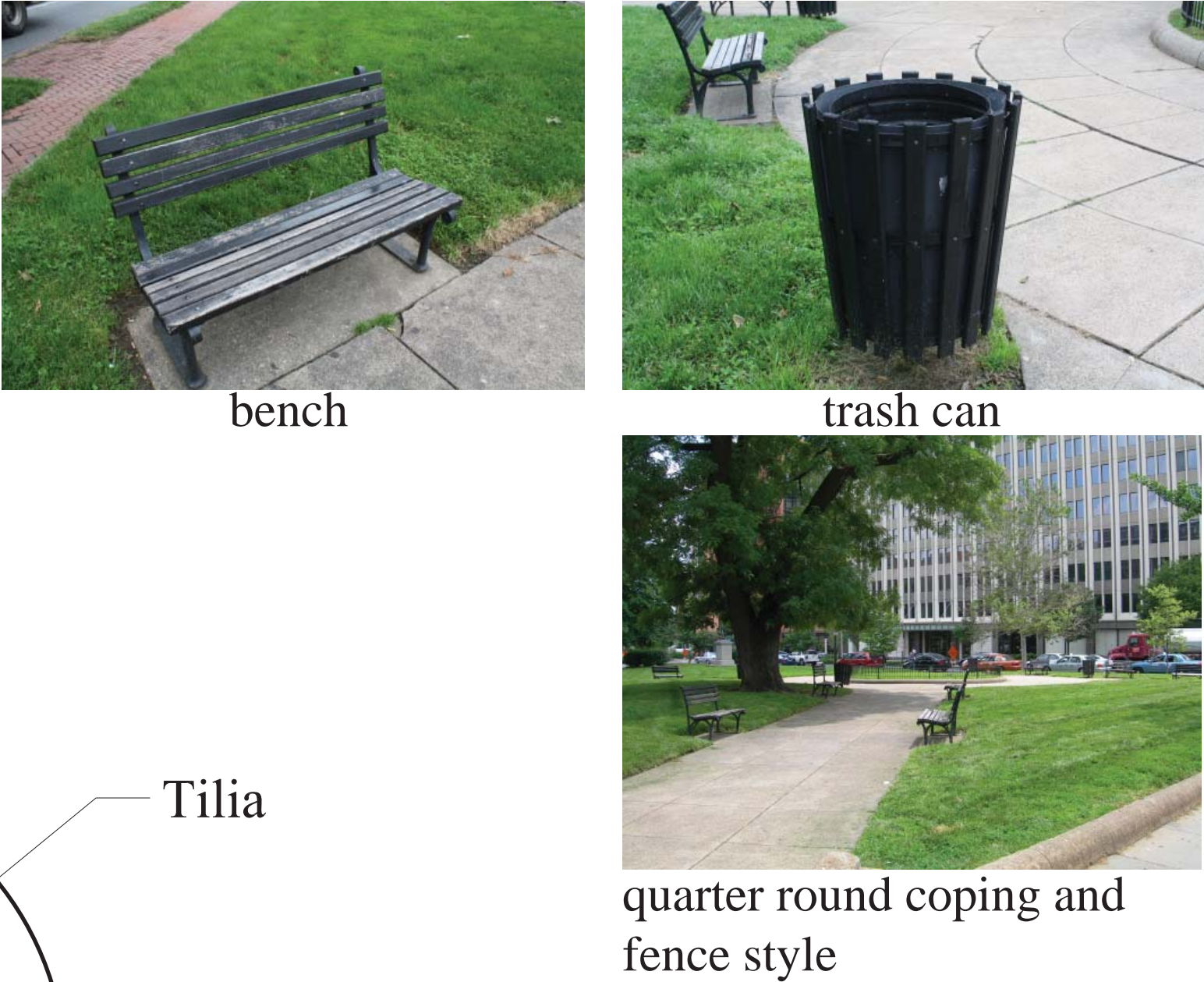
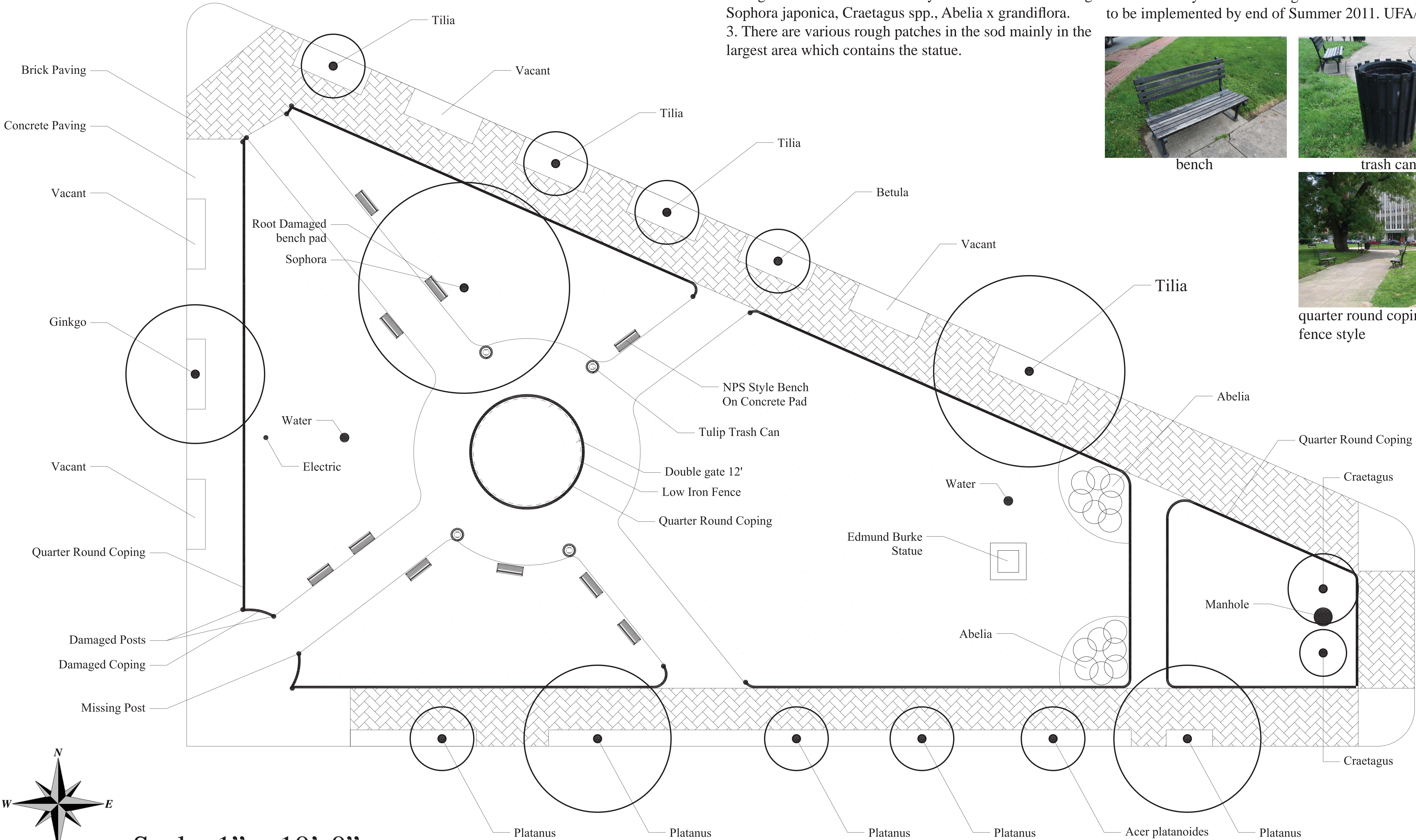
Damage:



Notes:

1. Paving is demonstrated by hatching on the plan. The brick around the site is of a herringbone pattern. Inside the property line (quarter round coping) square and rectangular concrete pavers are used for the pathways. The thick dark line represents the 4" concrete quarter round coping that surrounds the exterior. At endpoints on this coping are obelisk shaped posts.
2. Vegetation in the site boundary consists of the following: *Sophora japonica*, *Craetagus* spp., *Abelia x grandiflora*.
3. There are various rough patches in the sod mainly in the largest area which contains the statue.

4. The water sources on site can be accessed with the use of a quick coupler key.
5. Benches are black iron base with black painted wood slats. Trash cans are wood slat tulip shaped.
6. Fencing surround the center island is a low picket style iron. A 12' opening is available with a gate opening for maintenance or construction.
7. Tree box layout surrounding the site is based on plans to be implemented by end of Summer 2011. UFA/DDOT.



Existing Conditions Plan

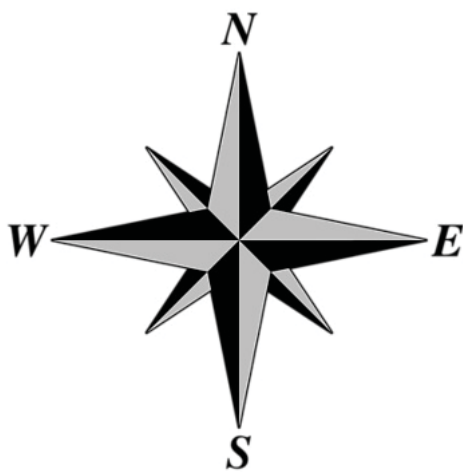
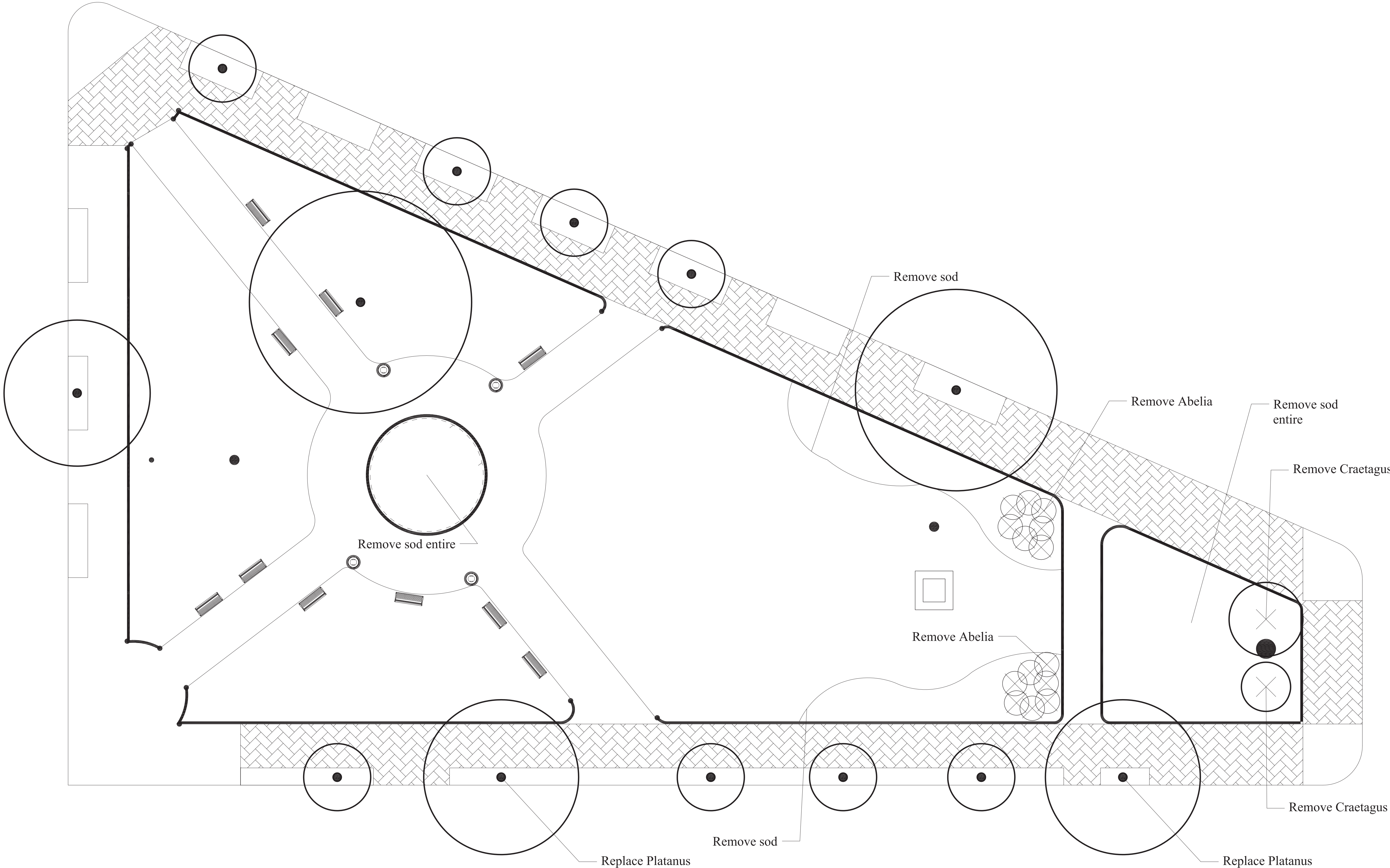
National Park Service  
U.S. Reservation 68 - Burke Park  
11th Street and Massachusetts Avenue NW  
Washington, District of Columbia  
Mount Vernon Square District





Demolition Plan

National Park Service  
U.S. Reservation 68 - Burke Park  
11th Street and Massachusetts Avenue NW  
Washington, District of Columbia  
Mount Vernon Square District



Scale: 1" = 10'-0"



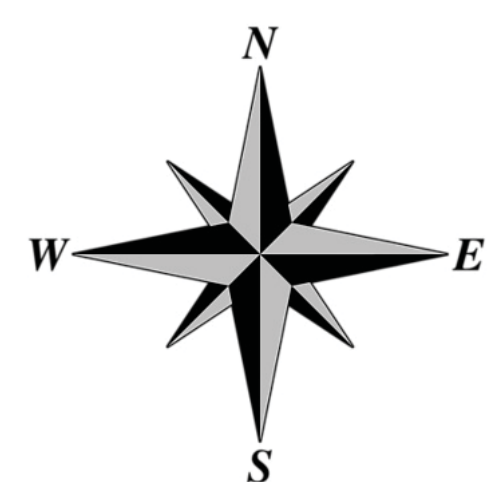
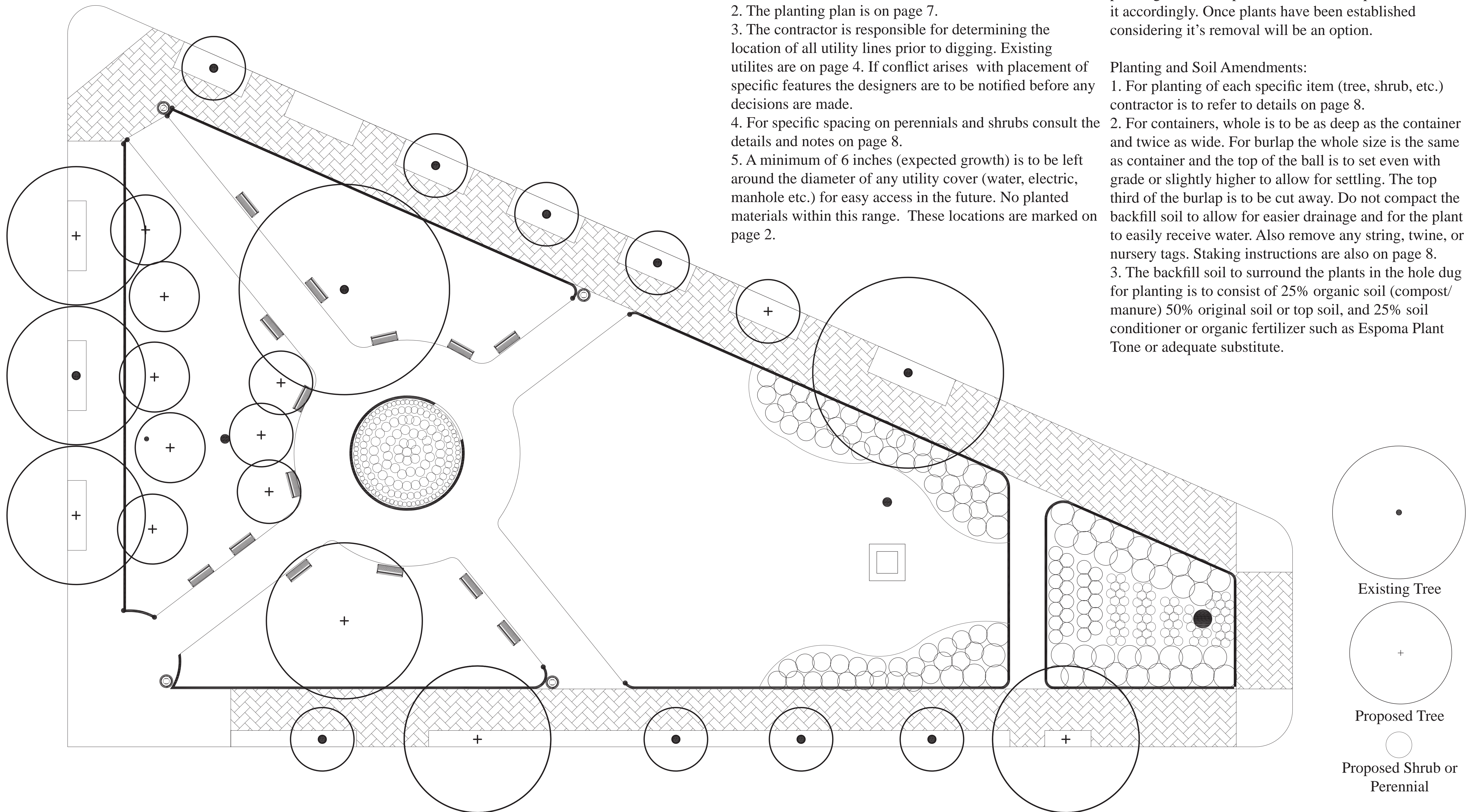
## Notes:

1. Planting details on page 8 are to be consulted prior to construction.
2. The planting plan is on page 7.
3. The contractor is responsible for determining the location of all utility lines prior to digging. Existing utilites are on page 4. If conflict arises with placement of specific features the designers are to be notified before any decisions are made.
4. For specific spacing on perennials and shrubs consult the details and notes on page 8.
5. A minimum of 6 inches (expected growth) is to be left around the diameter of any utility cover (water, electric, manhole etc.) for easy access in the future. No planted materials within this range. These locations are marked on page 2.

6. The low iron fence is to remain around the central planting island and perennials are to be spaced from it accordingly. Once plants have been established considering it's removal will be an option.

## Planting and Soil Amendments:

1. For planting of each specific item (tree, shrub, etc.) contractor is to refer to details on page 8.
2. For containers, whole is to be as deep as the container and twice as wide. For burlap the whole size is the same as container and the top of the ball is to set even with grade or slightly higher to allow for settling. The top third of the burlap is to be cut away. Do not compact the backfill soil to allow for easier drainage and for the plant to easily receive water. Also remove any string, twine, or nursery tags. Staking instructions are also on page 8.
3. The backfill soil to surround the plants in the hole dug for planting is to consist of 25% organic soil (compost/ manure) 50% original soil or top soil, and 25% soil conditioner or organic fertilizer such as Espoma Plant Tone or adequate substitute.



Scale: 1" = 10'-0"





Layout Plan

National Park Service  
U.S. Reservation 68 - Burke Park  
11th Street and Massachusetts Avenue NW  
Washington, District of Columbia  
Mount Vernon Square District

Turf Remediation:

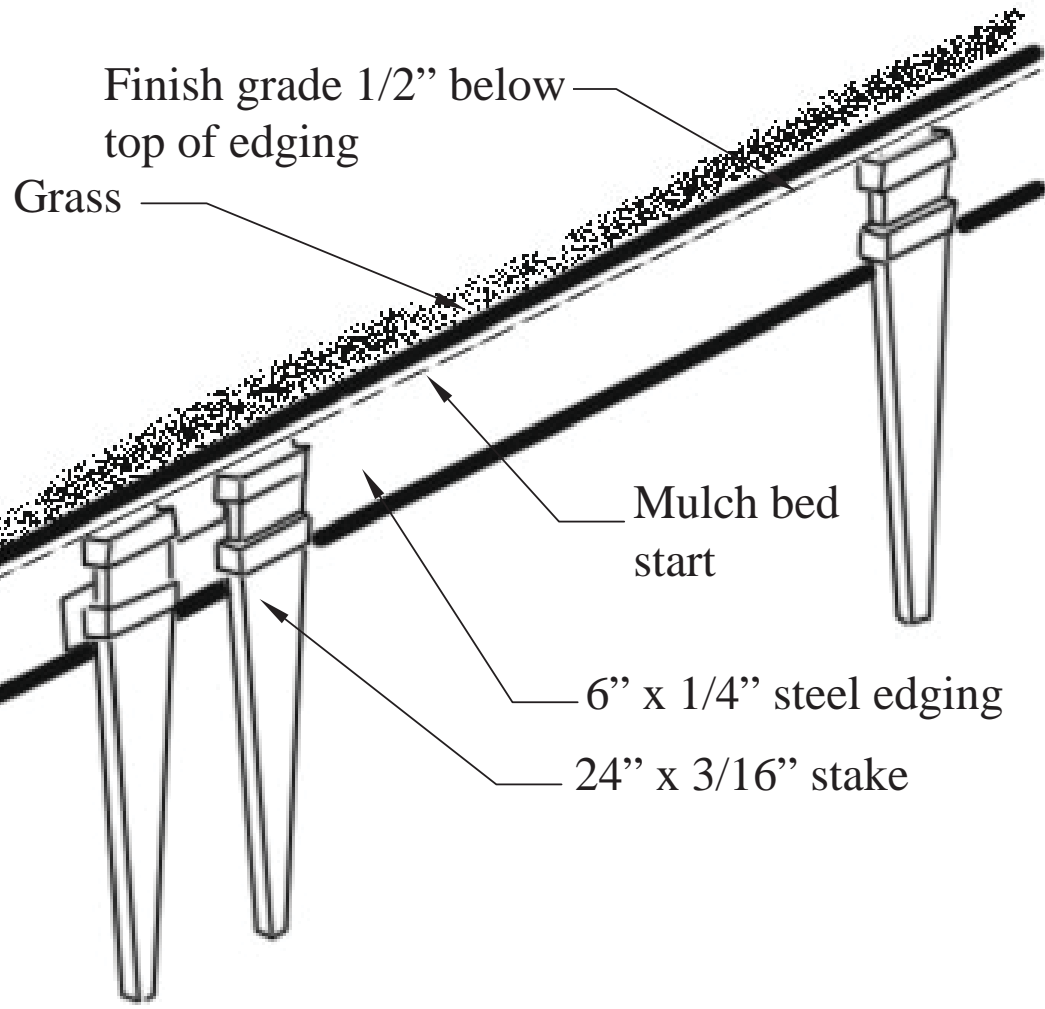
1. An over seeding process will be used to repair the damaged turn on site.

Overseeding:

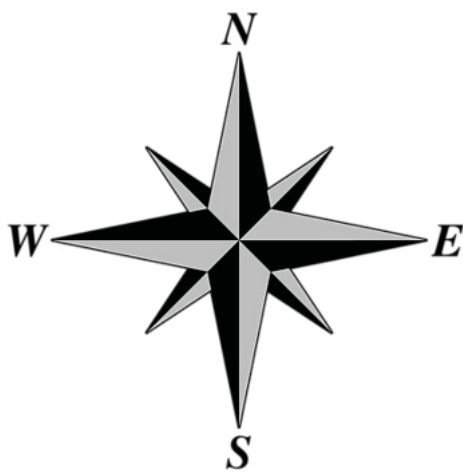
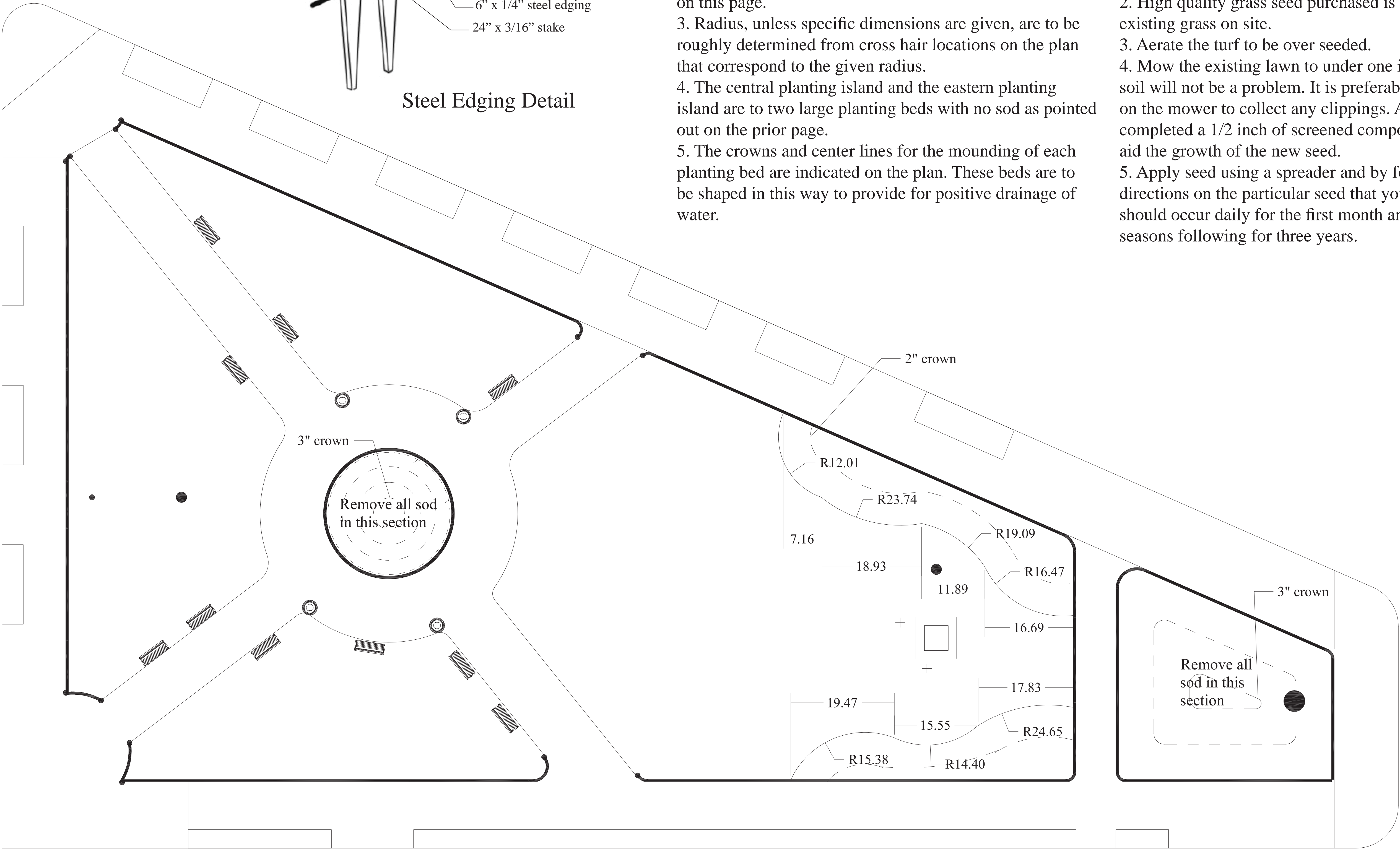
1. This process should take place in the fall.
2. High quality grass seed purchased is to match the existing grass on site.
3. Aerate the turf to be over seeded.
4. Mow the existing lawn to under one inch. Scraping the soil will not be a problem. It is preferable to use a bag on the mower to collect any clippings. After mowing is completed a 1/2 inch of screened compost can be added to aid the growth of the new seed.
5. Apply seed using a spreader and by following the directions on the particular seed that you bought. Watering should occur daily for the first month and weekly in dry seasons following for three years.

Notes:

1. In the designated areas the top layer (sod) is to be removed completely leaving no clippings behind to provide for weed growth inside the planting beds.
2. Steel edging is to be placed around each of the proposed landscape beds to contain the mulch and separate any beds from grass infiltration. Consult the detail for steel edging on this page.
3. Radius, unless specific dimensions are given, are to be roughly determined from cross hair locations on the plan that correspond to the given radius.
4. The central planting island and the eastern planting island are to two large planting beds with no sod as pointed out on the prior page.
5. The crowns and center lines for the mounding of each planting bed are indicated on the plan. These beds are to be shaped in this way to provide for positive drainage of water.



Steel Edging Detail



Scale: 1" = 10'-0"

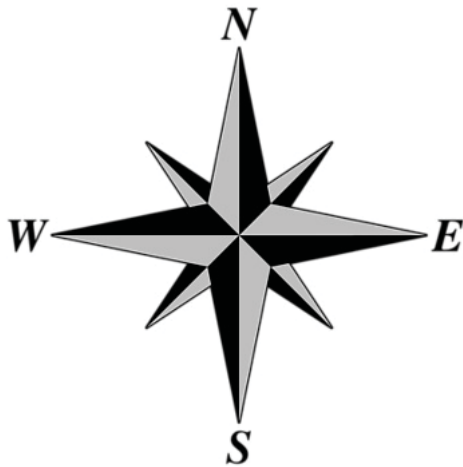
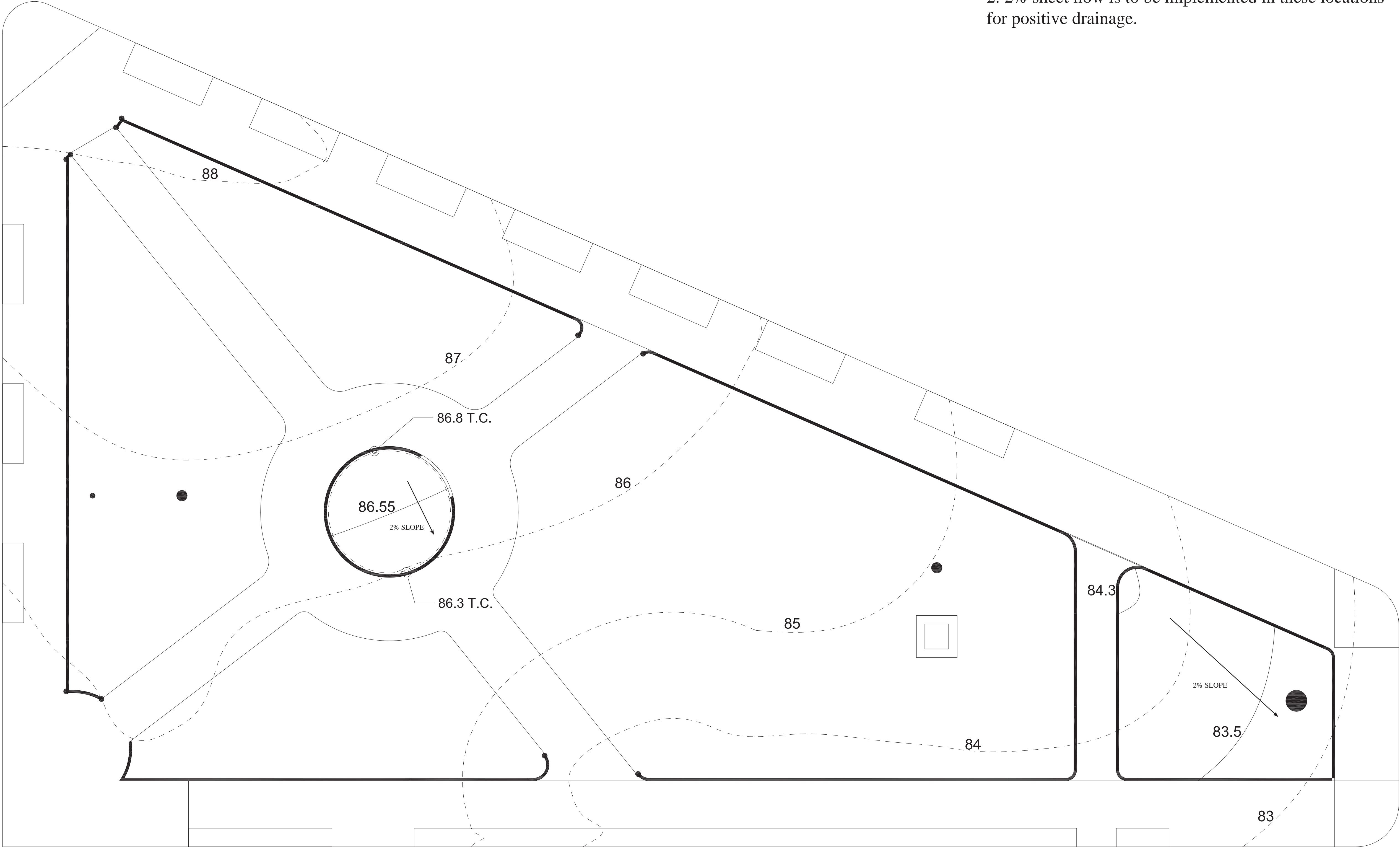




Grading Plan

National Park Service  
U.S. Reservation 68 - Burke Park  
11th Street and Massachusetts Avenue NW  
Washington, District of Columbia  
Mount Vernon Square District

- Notes:
- 1. Existing grade is to be preserved except in the raised curb planting beds where new slope and spot elevations have been indicated.
  - 2. 2% sheet flow is to be implemented in these locations for positive drainage.



Scale: 1" = 10'-0"





# Planting Plan

National Park Service  
U.S. Reservation 68 - Burke Park  
11th Street and Massachusetts Avenue NW  
Washington, District of Columbia  
Mount Vernon Square District

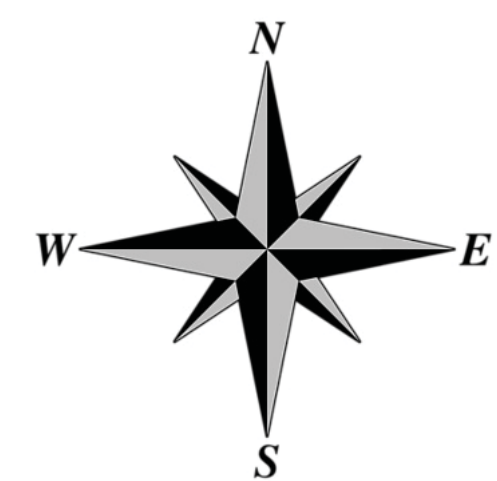
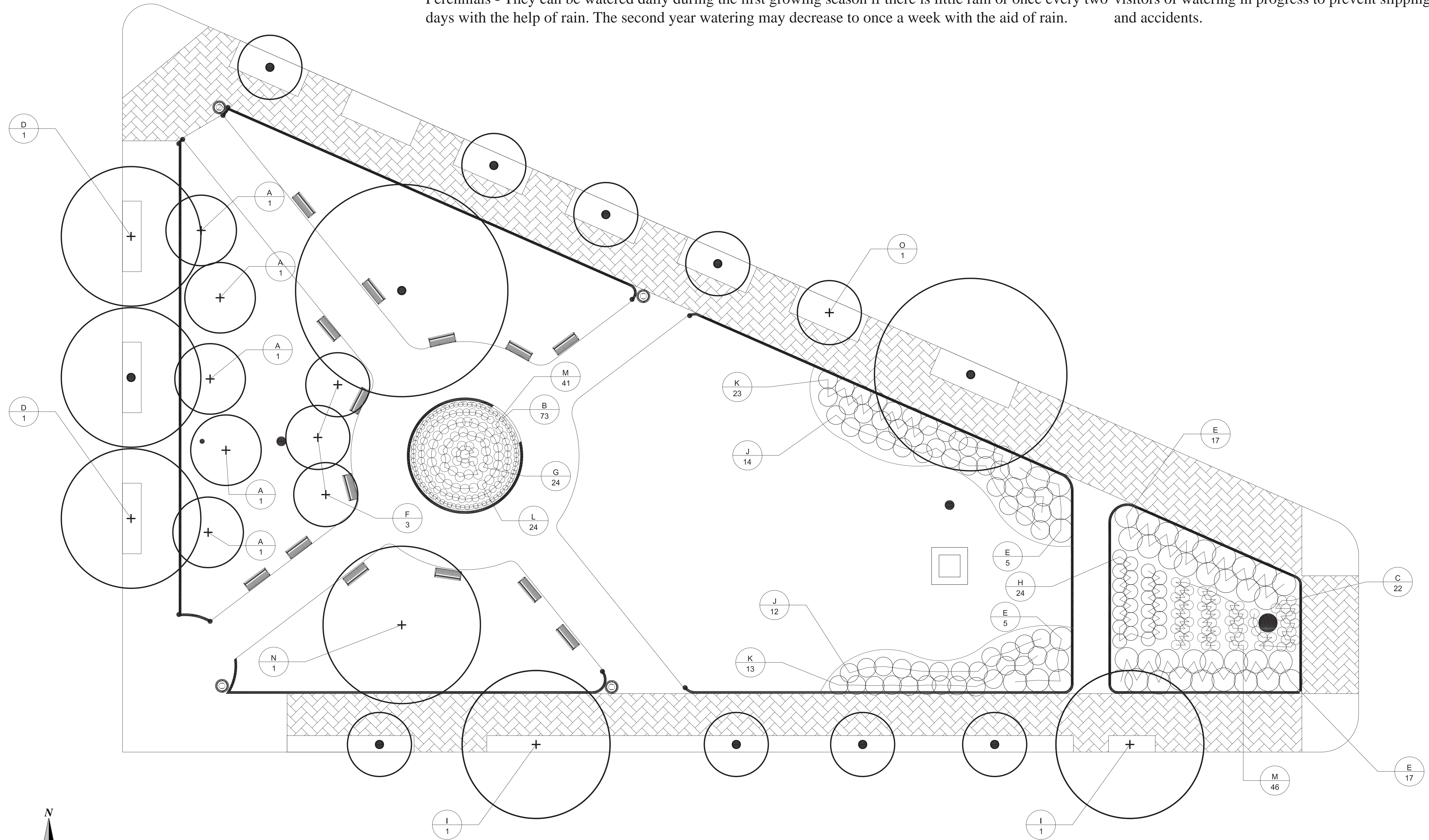
## Watering Instructions:

Trees and Shrubs - After initial planting they are to be watered once or twice a week for the first growing season. They will need to be watered once a week the first year. Once every two weeks the second year, and once every three weeks, in hot, dry seasons the third year. When watering trees and shrubs allow the water to soak through the soil instead of directly running off after it makes contact. (Water longer)

Perennials - They can be watered daily during the first growing season if there is little rain or once every two days with the help of rain. The second year watering may decrease to once a week with the aid of rain.

## WATERING NEEDS:

To water plants at Reservation 68 a quick coupler key will be needed to access the water source. A 100' hose will be needed to reach the farthest watering point with a comfortable slack. Signs to warn park visitors of watering in progress to prevent slipping and accidents.



Scale: 1" = 10'-0"



| Planting Schedule |  |                            |          |           |                        |
|-------------------|--|----------------------------|----------|-----------|------------------------|
| Key               | Botanical Name                               | Common Name                | Quantity | Size      | Other Notes            |
| A                 | Cercis canadensis 'Forest Pansy'             | Eastern Redbud             | 5        | 10 gal.   |                        |
| B                 | Dianthus spp. 'Coconut Surprise'             | Dianthus                   | 73       | 1 qt.     |                        |
| C                 | Gaillardia 'Burgundy'                        | Blanket Flower             | 22       | 1 qt.     |                        |
| D                 | Ginkgo bilboa 'Princeton Sentry'             | Gingo Tree                 | 2        | 15 gal.   | Street Tree            |
| E                 | Ilex crenata 'beehive'                       | Convex leaf Japanese Holly | 44       | 3 gal.    | Dwarf                  |
| F                 | Magnolia virginiana                          | Sweetbay Magnolia          | 3        | 15 gal.   |                        |
| G                 | Pennisetum alopecuroides 'Hameln'            | Dwarf Fountain Grass       | 24       | 1 gal.    |                        |
| H                 | Philadelphus x virginialis 'Dwarf Snowflake' | Mock Orange                | 24       | 3 gal.    | Dwarf                  |
| I                 | Platanus x acerifolia                        | London Plane Tree          | 2        | 15 gal.   | Street Tree            |
| J                 | Rosa x 'Radtko'                              | Double Knockout Rose       | 26       | 3 gal.    | Non chemical dependant |
| K                 | Rosa x 'Radwhite'                            | Whiteout Knockout Rose     | 36       | 3 gal.    | Non chemical dependant |
| L                 | Rudbeckia goldstrum 'Becky'                  | Black Eyed Susan           | 24       | 1 gal.    |                        |
| M                 | Salvia nemorosa 'May Night'                  | Salvia                     | 87       | 1 gal.    |                        |
| N                 | Sophora japonica                             | Japanese Pagoda Tree       | 1        | 25 gal. ^ | As big as possible     |
| O                 | Tilia tomentosa                              | Silver Linden              | 1        | 15 gal.   | Street Tree            |

Plant Care Notes: All specified spacing is O.C.

A - Spacing is 15'.

B - Spacing is 15'. This is a thornless variety of Hawthorn so no danger or maintenance concerns will be present.

C - Spacing is 12". Evergreen variety so brown growth should be cut out in the spring to increase likelihood of blooming and new growth. After first blooms die they should be picked to produce more blooms later in the season.

D - Spacing is 24". Seed heads must completely dry out before any trimming is to occur. This will aid in the reseeding and blooming process for the following season.

E - Placed in center of tree box.

F - Spacing is 4 1/2' to 5'. Quantities selected for beds are to be evenly spaced on site. Reshaping and trimming should occur in the winter during the plants dormant period.

G - Spacing is 14' to 15'. Cutting off dead flowers will extend the blooming period. Dead stems can be cut back to soil level.

H - Spacing is 24". These grasses are to be cut to the ground in the spring immediately after threat of snow has passed. Leaving them untouched through the winter will add some ornamental interest.

I - Spacing is 3'. If pruning is needed to maintain a formal appearance this is to be done after the plants are done flowering for the season.

J - Placed in center of tree box.

K - Spacing is 4'. Pruning for size control can be done in the late winter or early spring. Pinching or cutting off dead blooms will speed up the re-flowering process as this variety blooms all summer.

L - Spacing is 4'. Pruning for size control can be done in the late winter or early spring. Pinching or cutting off dead blooms will speed up the re-flowering process as this variety blooms all summer.

M - Spacing is 24". Pruning should be done in the fall after the plant has completed it's blooming period.

N - Spacing is 24". Shaping can be done in early spring before the plant blooms or in the fall after it's blooming period.

O - No maintenance specifications for this plant.

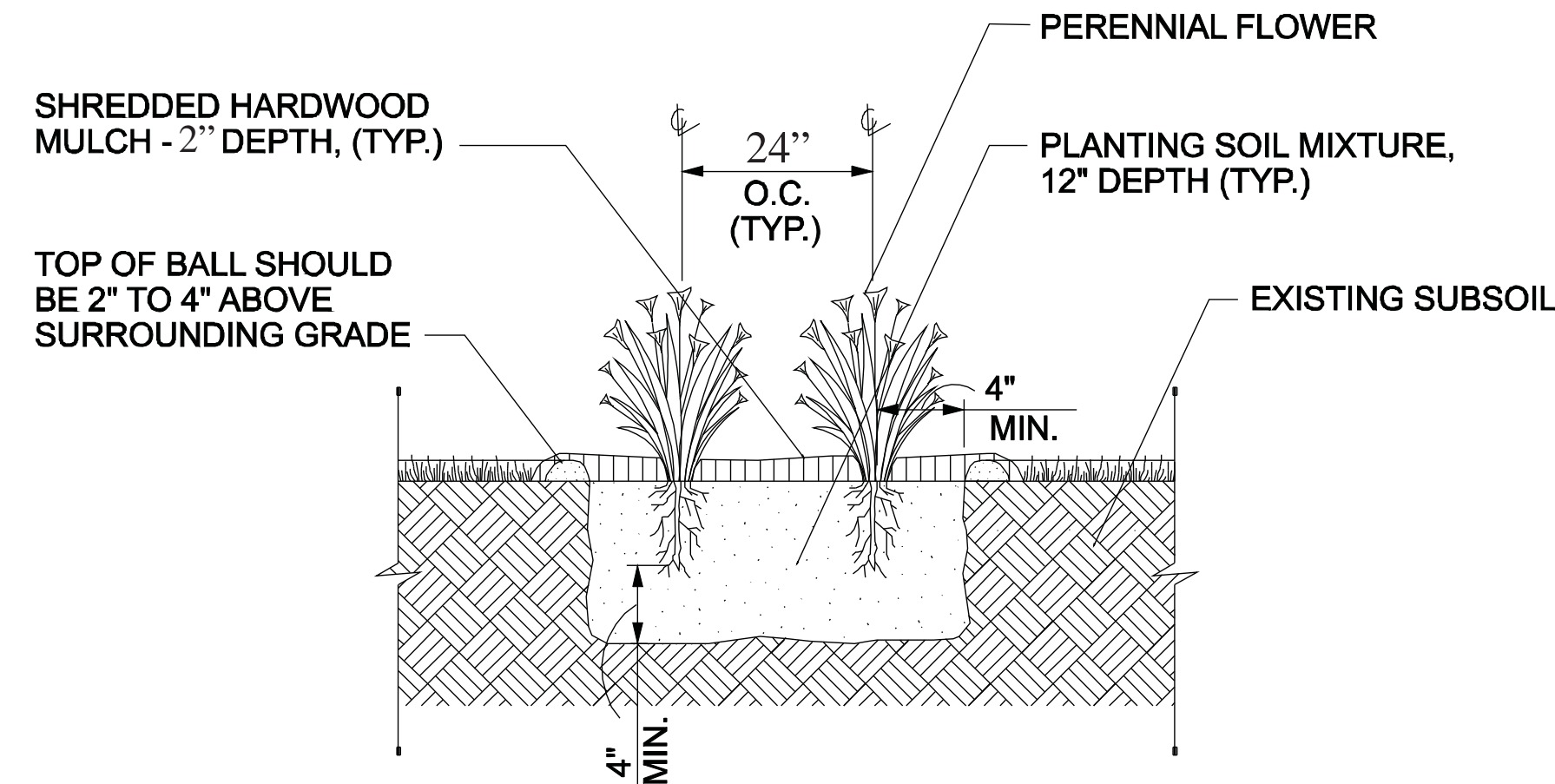
P - Placed in center of tree box.



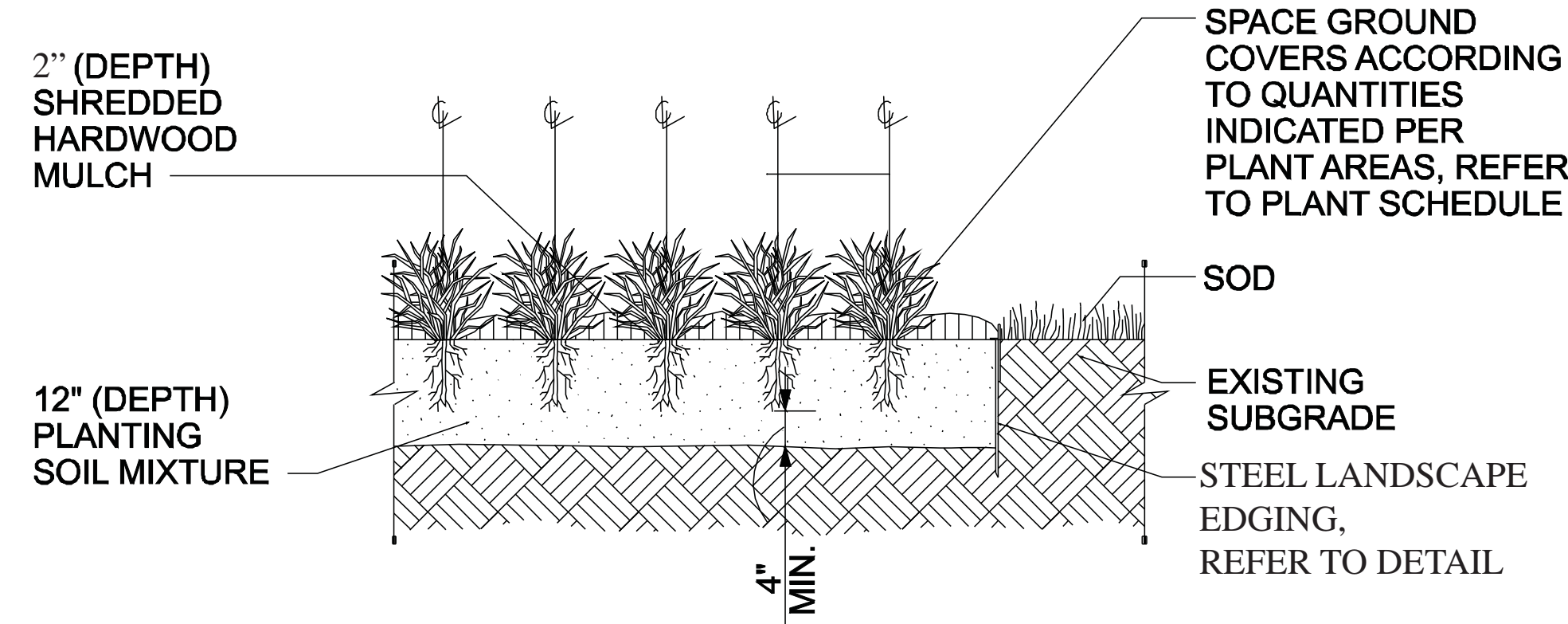
## Plant Schedule and Details

- These details are property of the U.S. Army Corps of Engineers. The Office of Planning does not claim to own them.
- These details are to be followed as guidelines for planting. If certain circumstances arise that require decision making the designers are to be contacted.

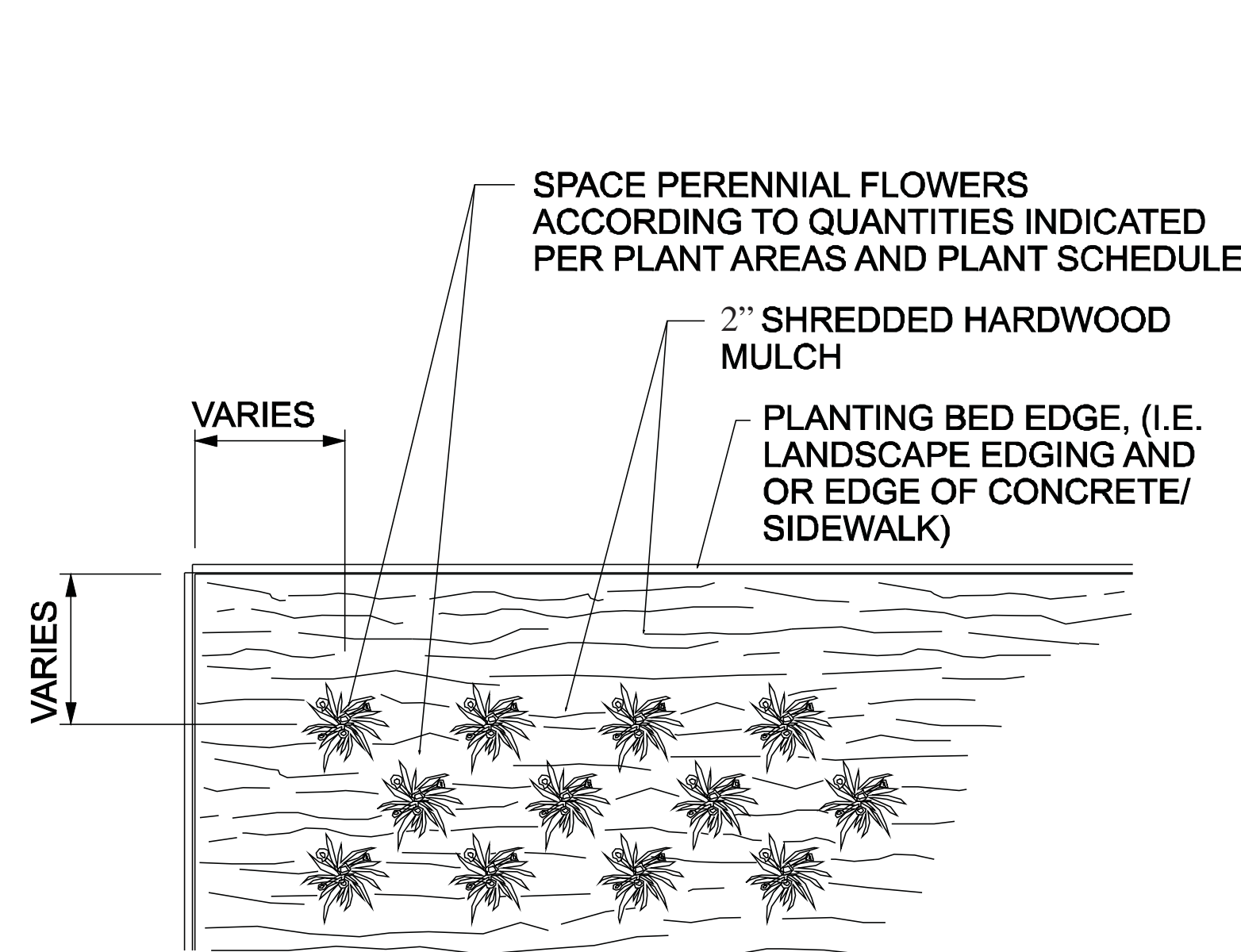
National Park Service  
U.S. Reservation 68 - Burke Park  
11th Street and Massachusetts Avenue NW  
Washington, District of Columbia  
Mount Vernon Square District



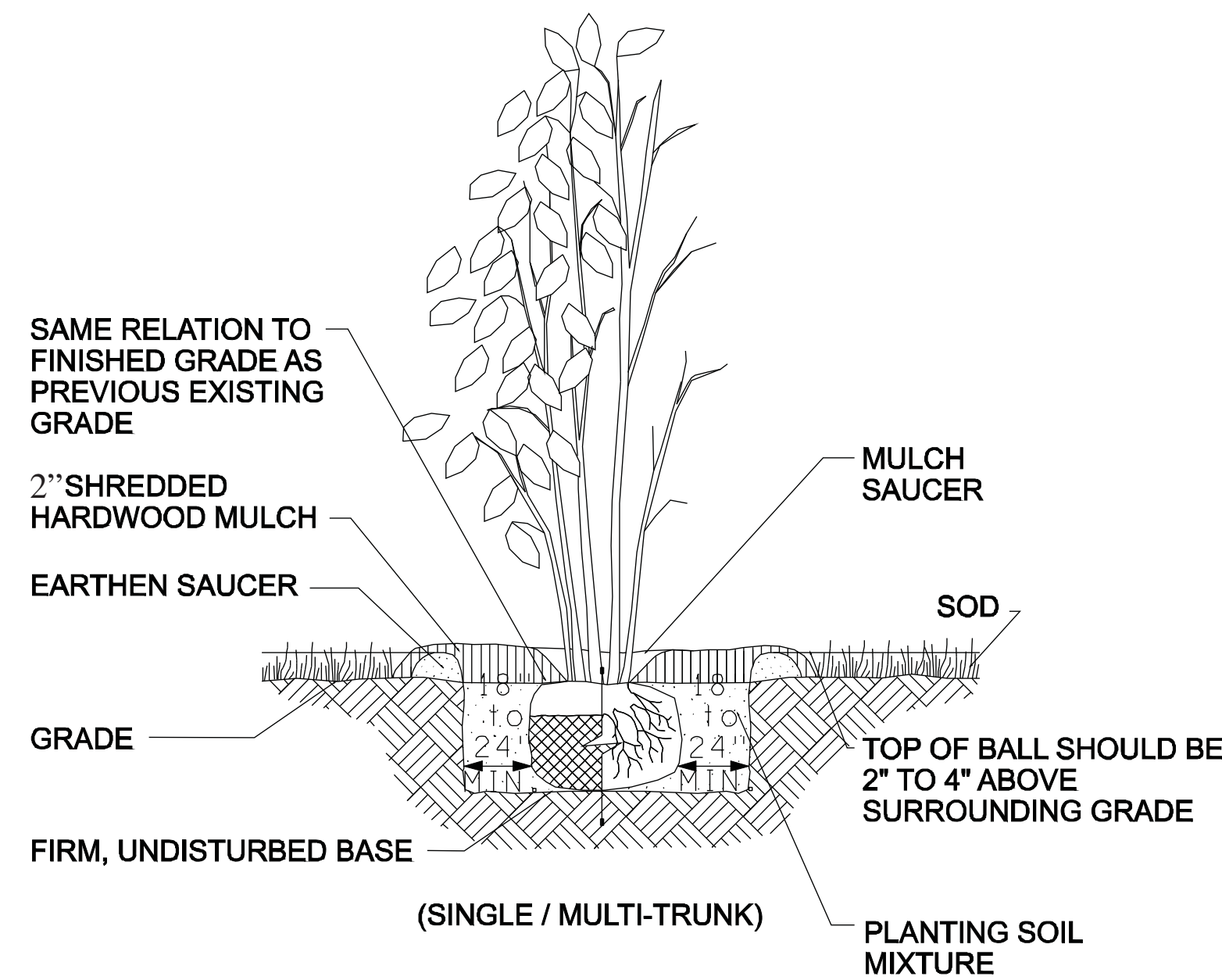
Large Perennial Detail



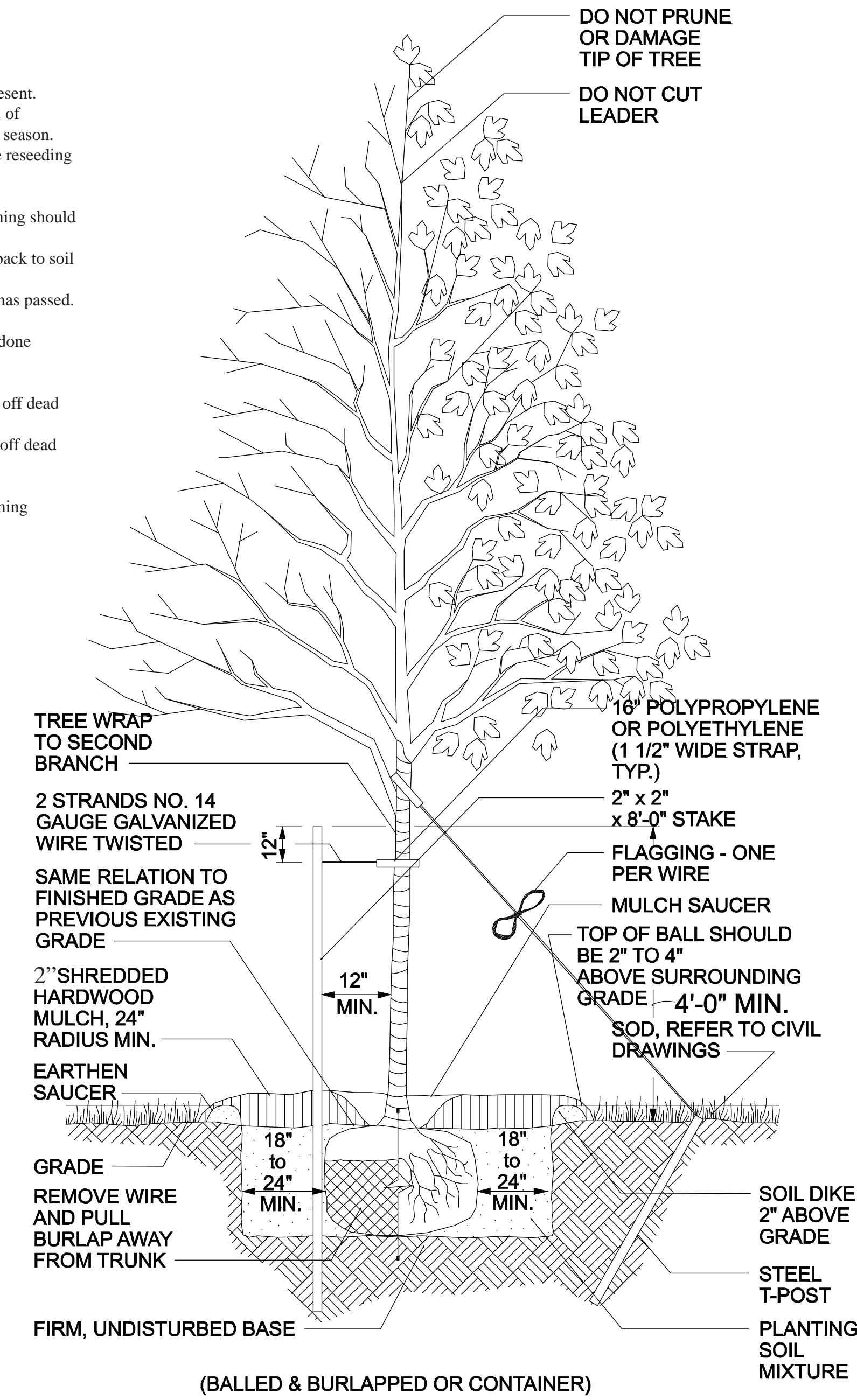
Perennial Detail



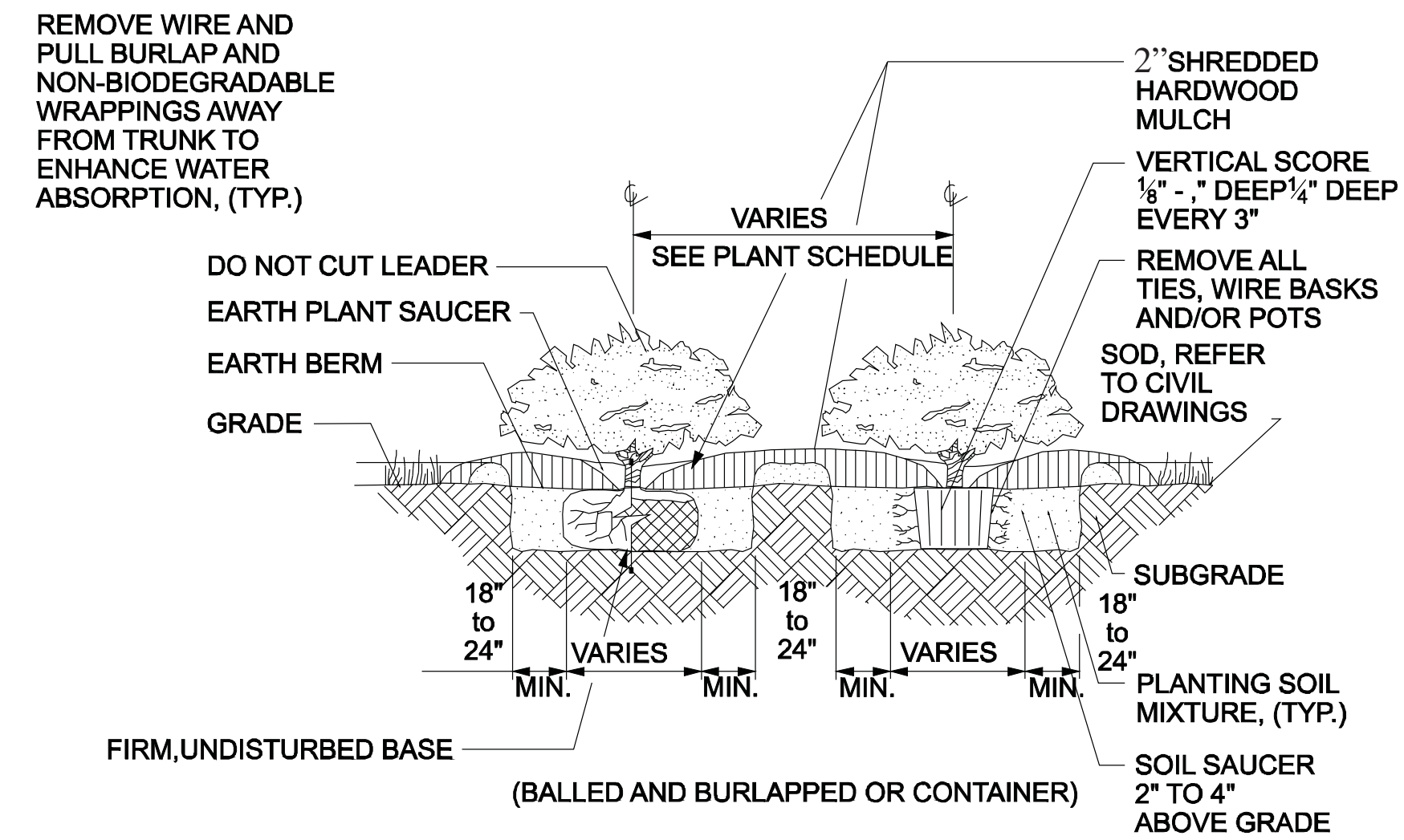
Perennial Spacing Detail



Large Shrub Planting Detail

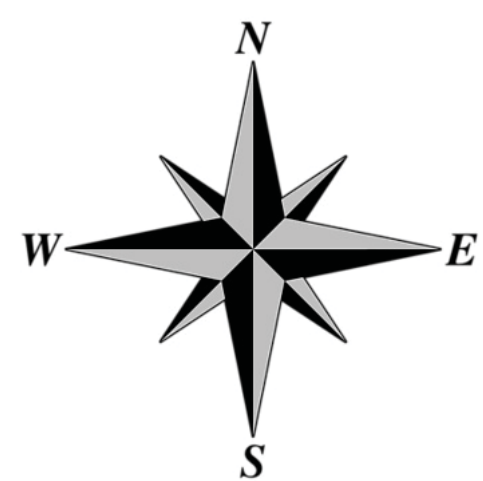


Tree Planting and Staking

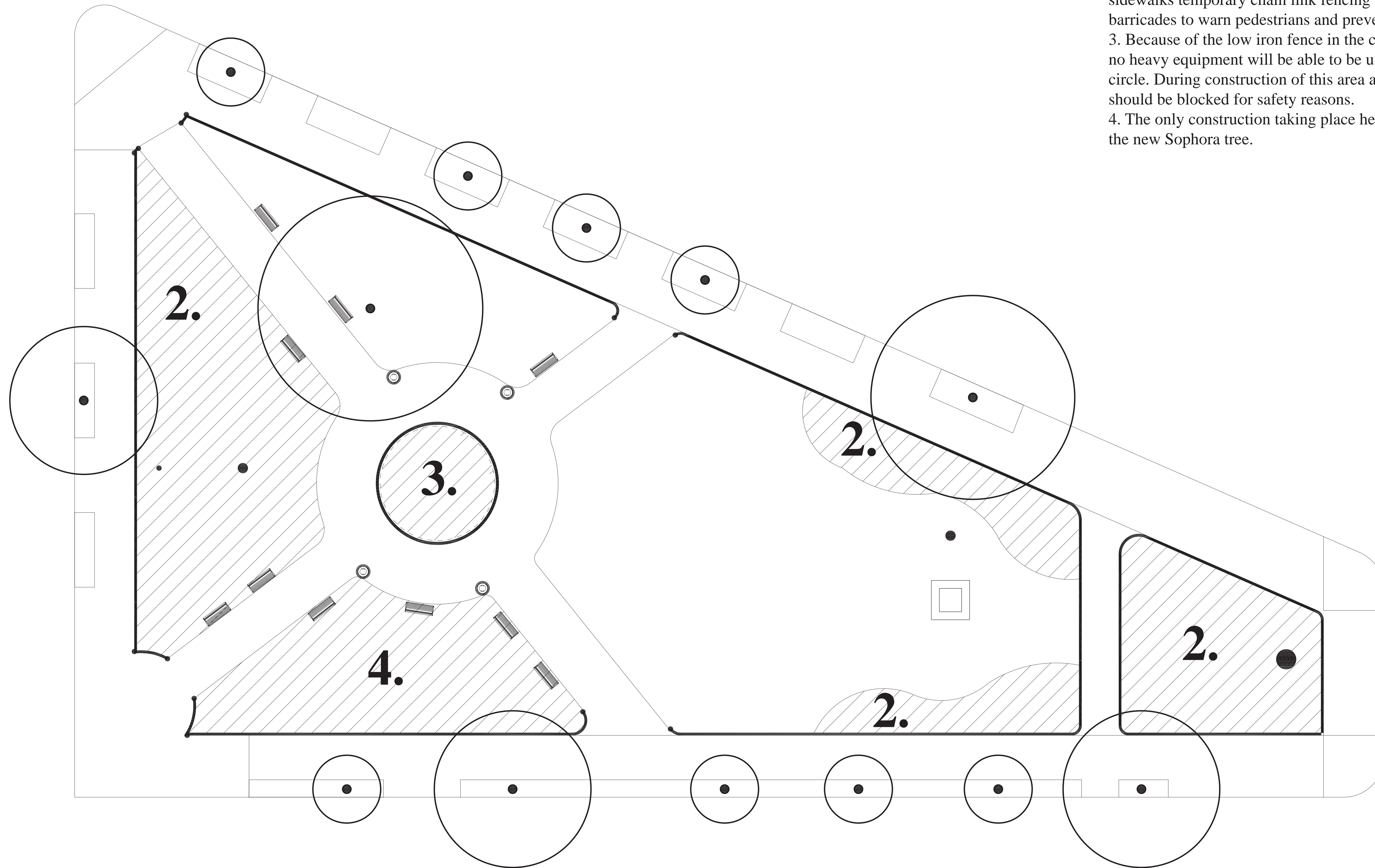


Shrub Planting Detail





Scale: 1" = 10'-0"



- Areas of construction

Notes:

1. Below is a plan of the general areas that construction will take place in Reservation 68.
2. During construction of these areas adjacent to street sidewalks temporary chain link fencing should be used for barricades to warn pedestrians and prevent accidents.
3. Because of the low iron fence in the center of the park no heavy equipment will be able to be used inside the circle. During construction of this area all four entry points should be blocked for safety reasons.
4. The only construction taking place here is the planting of the new Sophora tree.



## Construction Limits

National Park Service  
U.S. Reservation 68 - Burke Park  
11th Street and Massachusetts Avenue NW  
Washington, District of Columbia  
Mount Vernon Square District

Page:

9 of 9