



Understanding Preservation Issues within Wilderness Areas

Case Study: Olympic National Park

Ahlstrom's Prairie, 2011

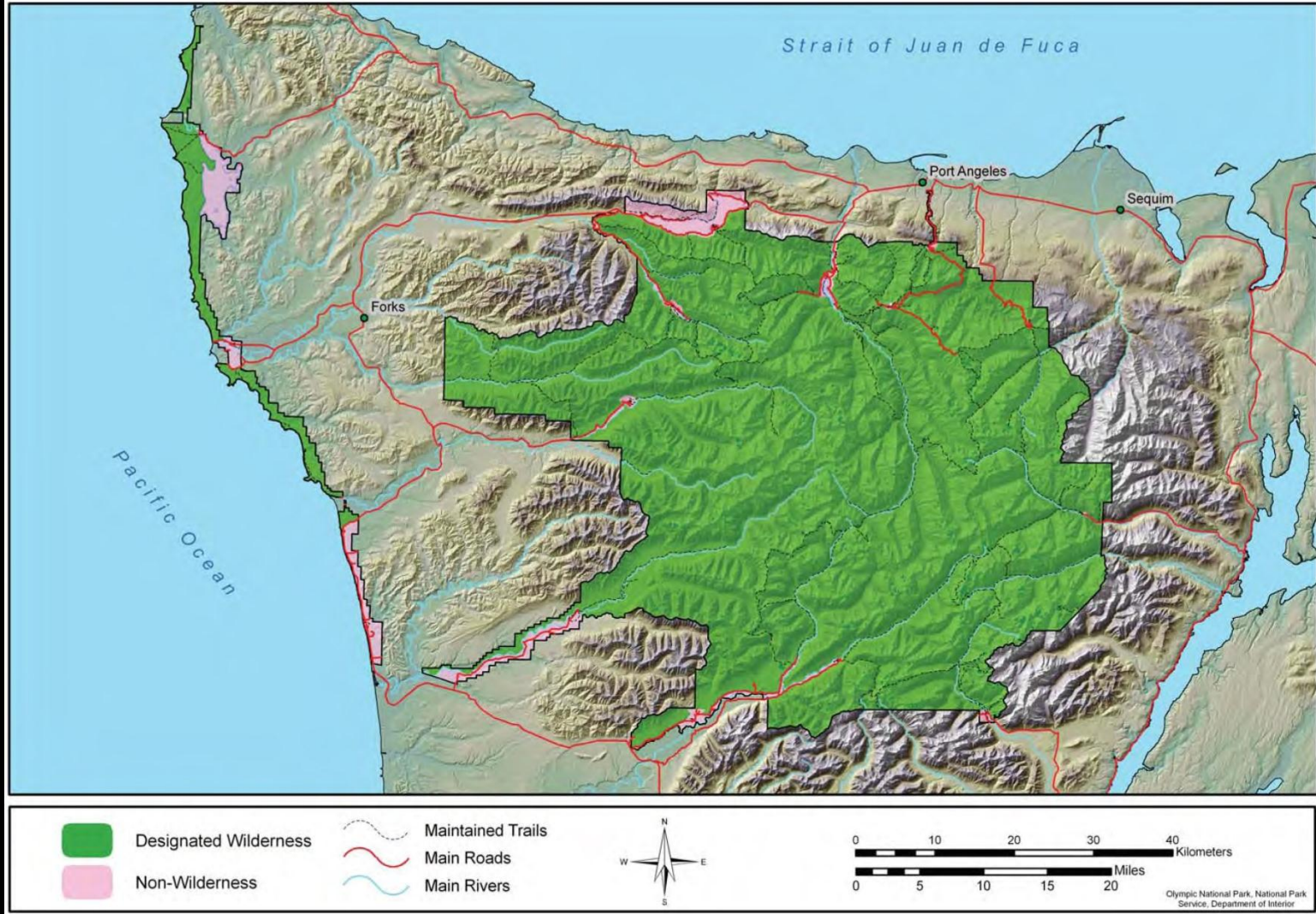
Olympic National Park Wilderness

- Congress designated the “Olympic Wilderness” in 1988
- Olympic National Park has 876,669 acres of wilderness, which constitutes 95% of the park. It contains:
 - 611 miles of trail, 700+ bridges, 12 miles of boardwalk, 6 ranger stations, historic shelters and homestead sites, privies, and 1,300+ campsites as well as administrative facilities such as radio repeaters and research equipment





Designated Wilderness Within Olympic National Park





National Park Service
U.S. Department of the Interior
Olympic National Park
Washington

National Park Service
U.S. Department of the Interior
Olympic National Park
Washington

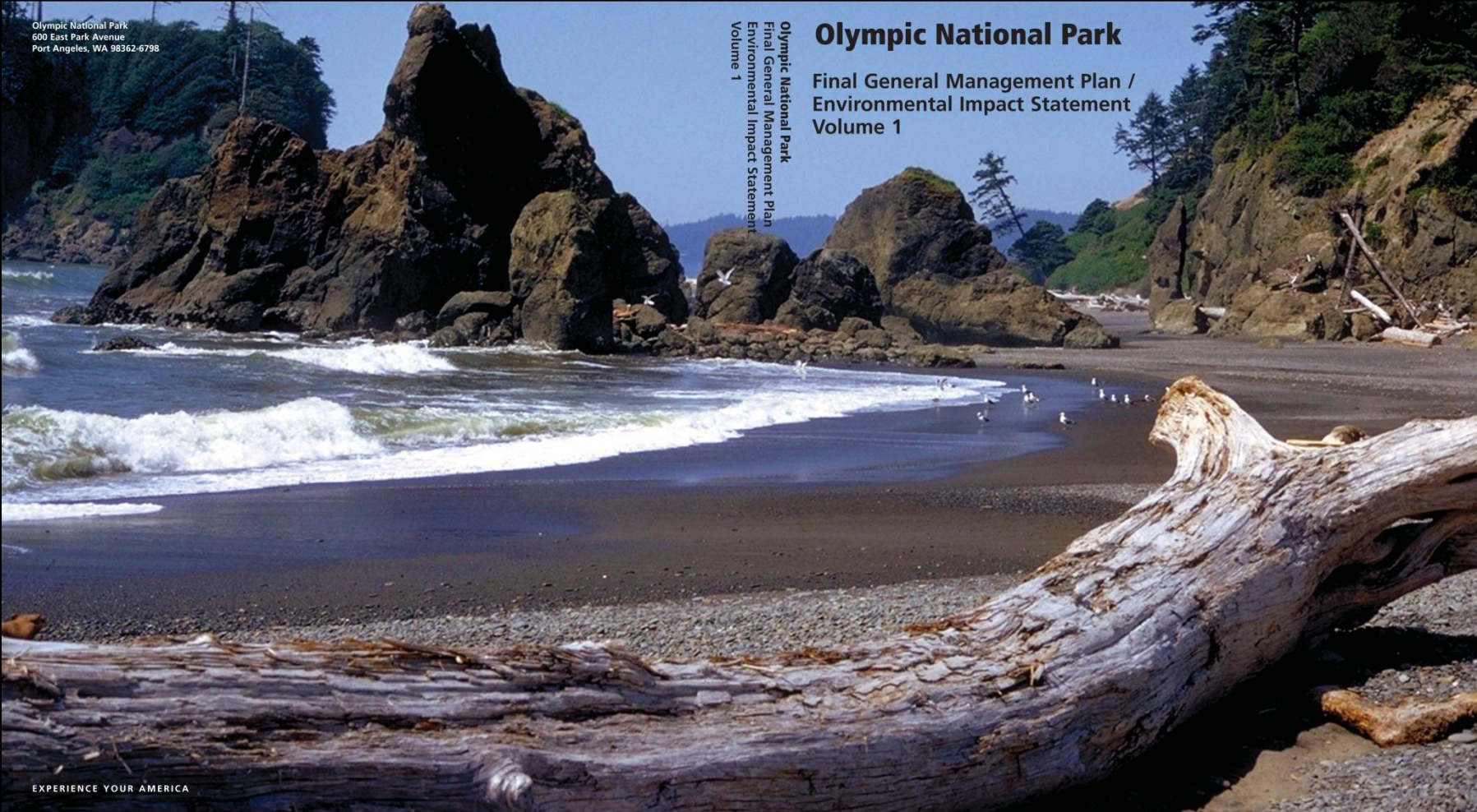


Olympic National Park
600 East Park Avenue
Port Angeles, WA 98362-6798

Olympic National Park
Final General Management Plan
Environmental Impact Statement
Volume 1

Olympic National Park

Final General Management Plan / Environmental Impact Statement Volume 1





NPS Form 10-900-b
(June 1991)

OMB No. 1024

United States Department of the Interior
National Park Service

National Register of Historic Places
Multiple Property Documentation Form

This form is used for documenting multiple property groups relating to one or several historic contexts. See instructions in *How to Complete the Multiple Property Documentation Form* (National Register Bulletin 16B). Complete each item by entering the requested information. For additional space, use continuation sheets (Form 10-900-4). Use a typewriter, word processor, or computer to complete all items.

New Submission

Amended Submission

A. Name of Multiple Property Listing

Historic Resources of Olympic National Park

B. Associated Historic Contexts

I. Exploration: late 1700s - 1890-

II. Settlement: late 1880s -

III. Industry: 1890s

IV. Entertainment

V. C-

VI. C

VII. At

C. Form Preparation

name/title Gail J. Kirstie Haerel, AIA

organization Nation

street & number 909 J

city or town Seattle

D. Certification

As the designated authority under the National Register documentation standards and sets the procedural and professional requirements for documentation, I, the undersigned, certify that this multiple property documentation is accurate and complete.

Signature of the Keeper

Signature of the certifying official

State or Federal agency and bureau

State of Washington State Historic Preservation Office

The Ozette Prairies of Olympic National Park: Their Former Indigenous Uses and Management

Final Report to Olympic National Park
Port Angeles, Washington
Winter 2009

M. Kit Anderson, Ph.D.
National Plant Data Center
USDA Natural Resources Center
One Shields Ave.
University of California
Davis, California
mkitanderson@ucdavis.edu

National Park Service
Cultural Landscapes Inventory
2012

Roose's Homestead
Olympic National Park

Recreational Structures
Homestead
Assessment, Evaluation, & Recommendations

IV.2
Peter A. Roose Homestead

Roose Prairie Homestead

zette Lake in the far western reaches of
A. Roose Homestead is a site significant to
inavian settlers of this region. Arriving in
Roose established a small subsistence
ore. Apparently a quiet, but resourceful
r around 40 years. He cleared sites for
constructed a number of structures, of
f repair.

nent of the larger cultural landscape
small property, additional qualities of

Structure Report

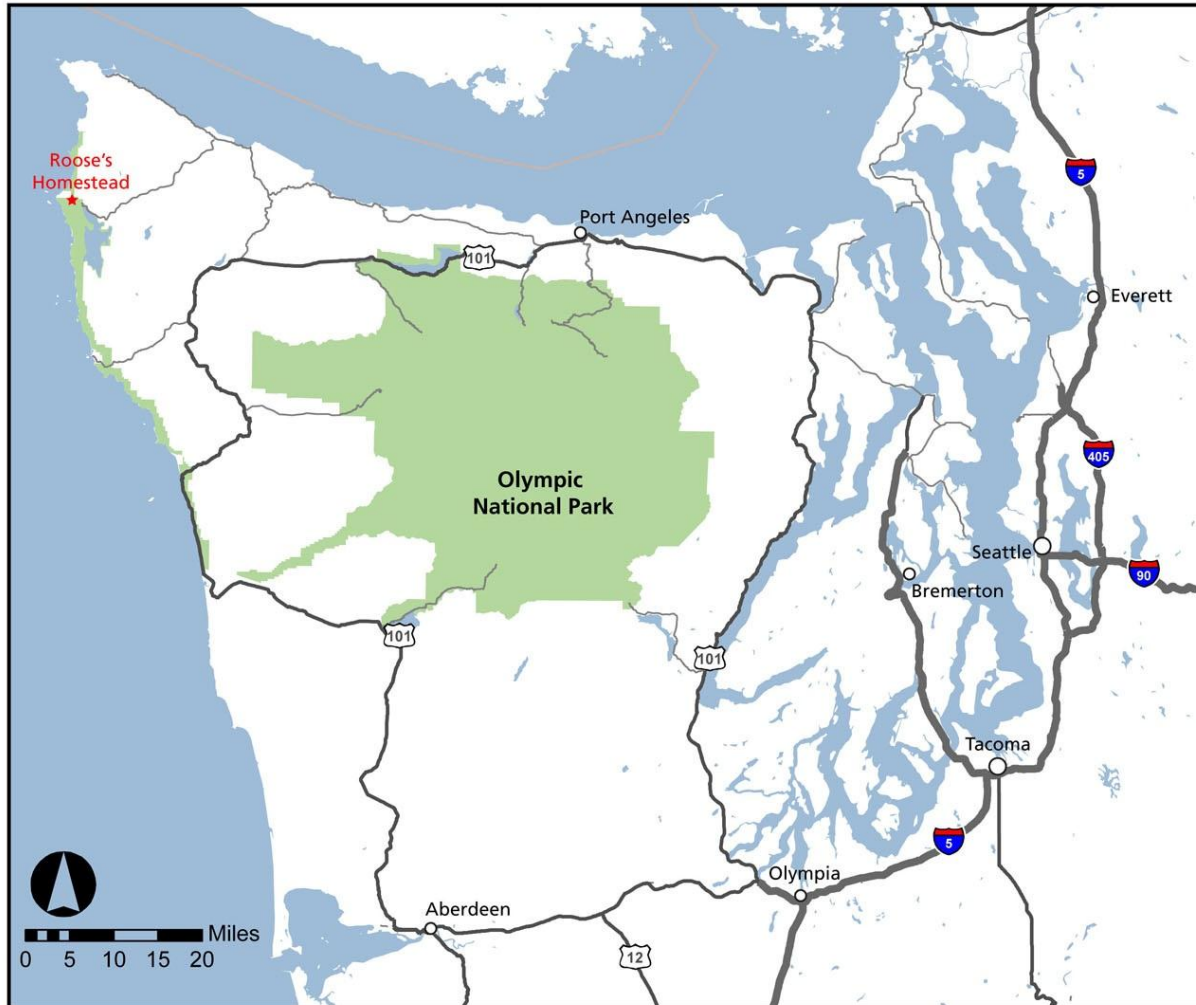
Page 73

Cultural Landscapes Inventory

Purpose of the CLI:

- Provide analysis and evaluation of landscape characteristics (historic features, patterns, and relationships) using historic photographs, written records, maps, etc.
- Assess condition and impacts
- Provide guidance for stabilization





Olympic National Park
Roose's Homestead - Location Map
Cultural Landscape Inventory | Pacific West Regional Office | Cultural Landscapes Program | 2011



Source: NPS 2011 GIS data

Notes: Map drawn using ArcMap 10 and Adobe Illustrator GS5



4-007.

Application No. 18429

HOMESTEAD.

Land Office at

Seattle, Wash.

I, Peter A. Roose, of Swan,
Washington,

do hereby apply to enter, under Section 2289,

Revised Statutes of the United States, the Lot 4 Sec. 7 S. 2 T. 1 R. 2

of Section 26, in Township 31-North of
Range 16 West, containing 157.38 acres.

Peter A. Roose

Land Office at

SEATTLE, WASH.

I, Edward P. Tromper, REGISTER OF THE LAND OFFICE,

do hereby certify that the above application is for Surveyed Lands of the class
which the applicant is legally entitled to enter under Section 2289, Revised
Statutes of the United States, and that there is no prior valid adverse right to
the same.

Edward P. Tromper
Register.



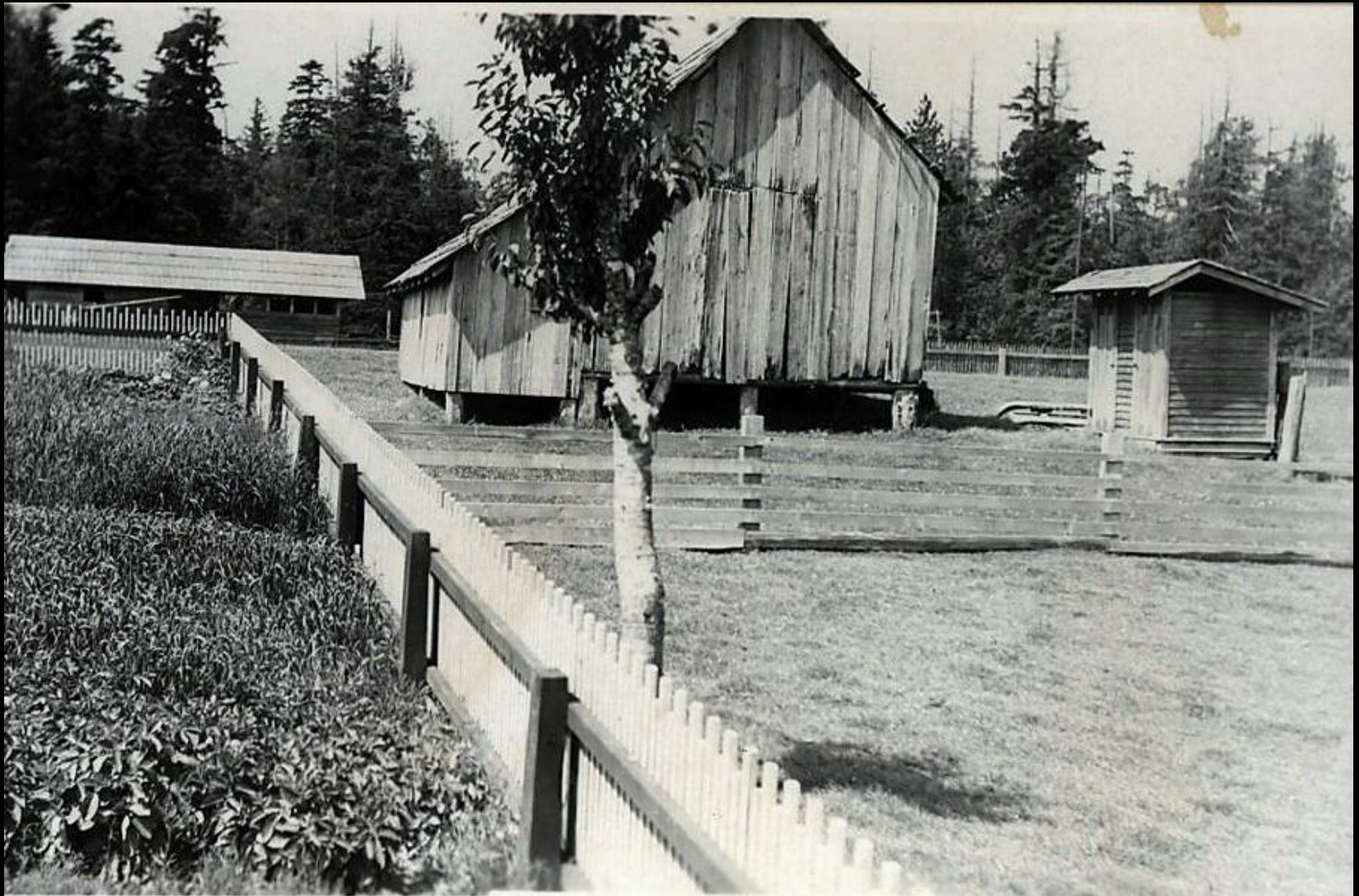
Peter Roose, n.d.



Roose's Homestead, 1940



Roose's Homestead, 1940



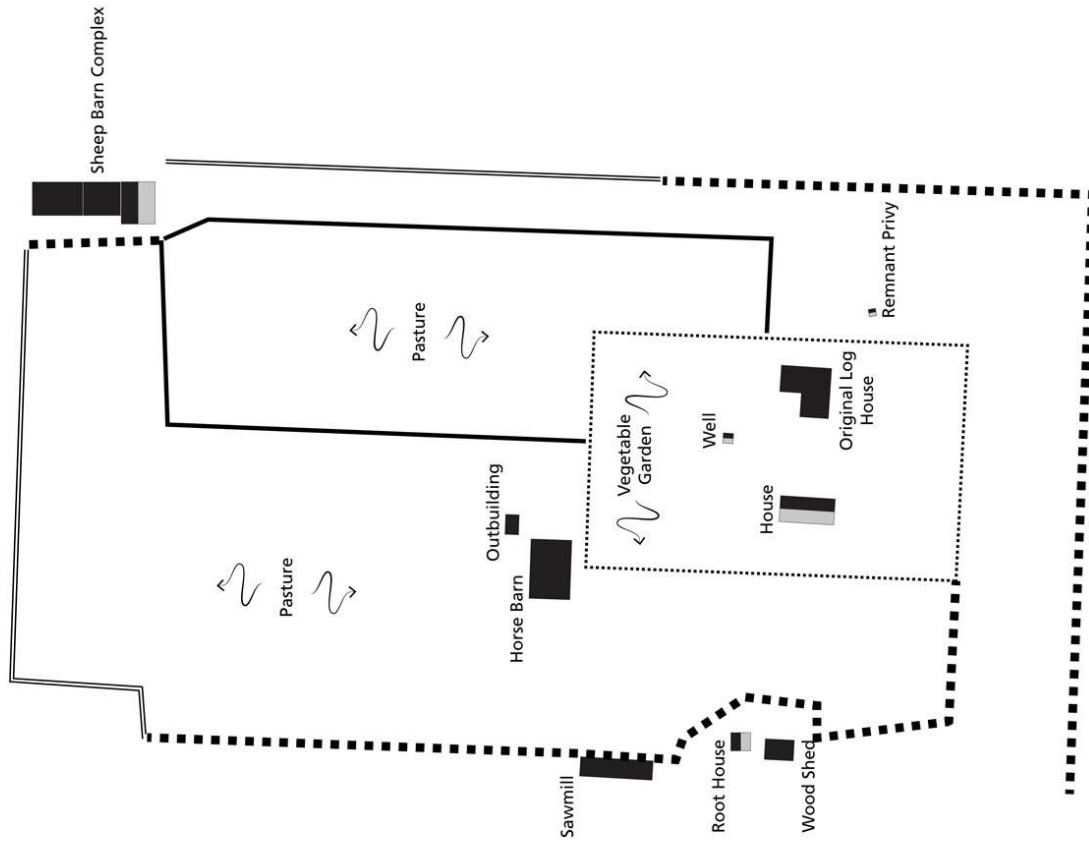
Roose's Homestead, 1940



Olympic National Park

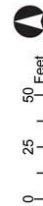
Roose's Homestead - Historic Period Plan (ca. 1940s)

Cultural Landscape Inventory | Pacific West Regional Office | Cultural Landscapes Program | 2011



LEGEND

- | | |
|--------------------|---------------------------------------|
| Milled Rail | Contributing Buildings and Structures |
| Split Cedar Rails | Previously Existing Buildings |
| Split Cedar Picket | |
| Spindle Picket | |



Source: NPS 1999 Survey and historic photographs

Note: Map drawn using Adobe Illustrator CS5



Roose's Homestead, March 2011





Roose's Homestead, 2011

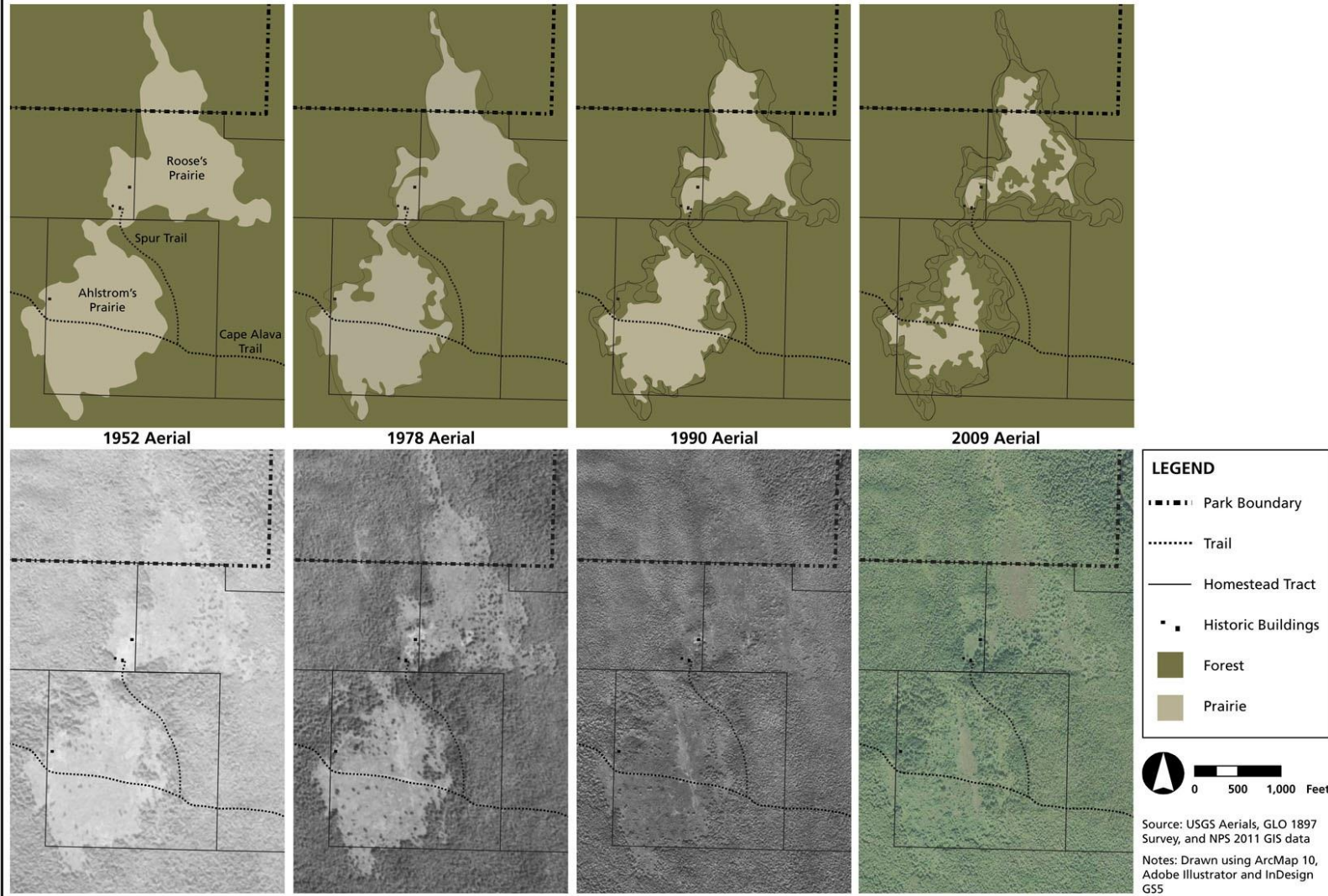




Olympic National Park

Roose's Homestead - Encroaching Vegetation

Cultural Landscape Inventory | Pacific West Regional Office | Cultural Landscapes Program | 2011





Ahlstrom's Homestead,
August 2011



Ahlstrom's
Homestead,
August 2011

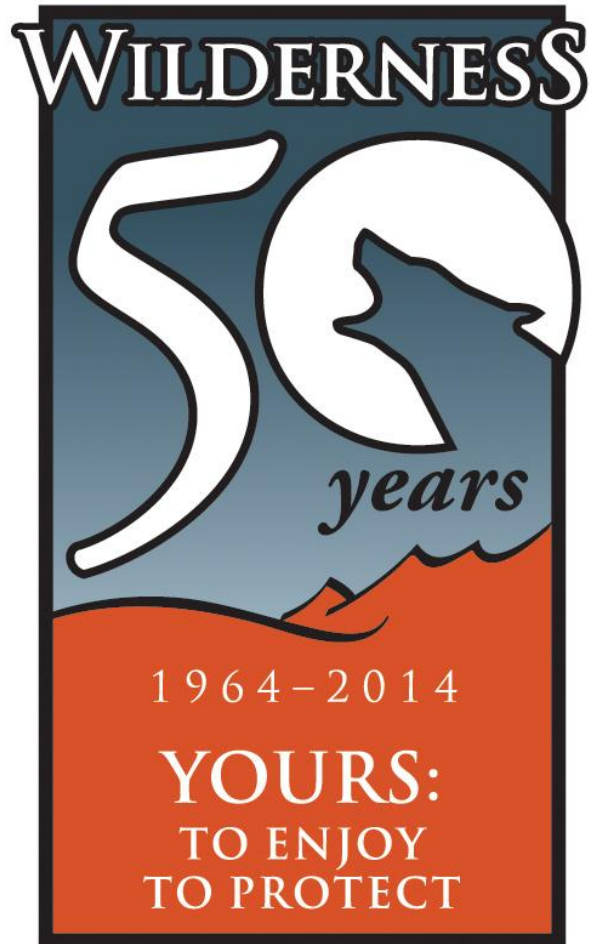


Roose's
Homestead,
October 2011



Questions to Consider

- How do we find balance between preservation of cultural resources, natural resources, and wilderness values?
- What is the appropriate level of treatment for cultural landscapes and historic buildings and structures in wilderness?
- Will the “primitive qualities” of the landscape be lost with the “presence of human control”?



Cortney Cain Gjesfjeld
Historical Landscape Architect
National Park Service

cortney_c_gjesfjeld@nps.gov