

FIRST-CLASS MAIL
NATIONAL PARK SERVICE
POSTAGE & FEES PAID
PERMIT NO. G-83

National Park Service
U.S. Department of the Interior
810 State Route 20
Sedro-Woolley, WA
98284-1239
OFFICIAL BUSINESS
PENALTY FOR PRIVATE USE \$300



Come to an Open House

We want to hear from you! Please attend one of the three open house meetings to tell us your opinions about the Lake Chelan National Recreation Area Replacement of Administrative Facilities at Stehekin proposal. This is your chance to talk to NPS representatives and discuss any concerns or suggestions you may have about the project.

The first hour of each meeting will be an open house during which you can review project information, talk with park staff, ask questions, and provide comments. The open house will be followed by a short presentation about the project, followed by questions and answers. The meeting at Stehekin will also include visits to the maintenance site and potential housing sites.

Meetings will be held as follows:

Monday, June 24, 2013
7:00-9:00 PM Open House
Stehekin, Washington
Golden West Visitor Center
Near Stehekin Landing at
Lake Chelan. Reached via
passenger ferry, trail, or float
plane.

Tuesday, June 25, 2013
9:00-11:00 AM
Site Walk-through

Tuesday, June 25, 2013
5:30-7:30 PM Open House
Chelan County PUD
Auditorium
327 N Wenatchee Ave
Wenatchee, WA 98801

Wednesday, June 26, 2013
4:00-6:00 PM Open House
Klondike Gold Rush
National Historical Park
319 Second Ave S
Seattle, WA 98104

Lake Chelan National Recreation Area

Replacement of Administrative Facilities at Stehekin
Public Scoping Newsletter Summer 2013



Dear Friends of North Cascades,

The National Park Service (NPS) is seeking your input on a proposal to relocate the maintenance and fire facilities and one single family house out of the floodplain and channel migration zone of the Stehekin River corridor within Lake Chelan National Recreation Area (LACH). Where maintenance and housing facilities are removed, the lots will be restored to more natural conditions. In accordance with the LACH's General Management Plan (GMP) and Final Stehekin River Corridor Implementation Plan/Environmental Impact Statement and Record of Decision, proposed maintenance facilities would be consolidated in an area near the airstrip. The maintenance facilities would include shuttle bus storage and maintenance, equipment, a repair building, a search and rescue fire cache and dorm, helicopter pad, hazardous material, propane, and gasoline storage, and a solid waste compaction/recycling transfer facility. One single family house would be built within the valley.

We are currently conducting site planning to identify layouts for these facilities and the housing location. We are also preparing an environmental assessment (EA) to analyze impacts of these proposed actions, and would like your input. Comments received during this public scoping period will help identify the issues and concerns to be addressed in the EA.

We will be holding public meetings in the summer of 2013. Check the schedule for a public meeting near you and please plan to attend. Comments may also be provided in writing before the close of the public scoping period July 10, 2013. Information about the public meeting and how to submit comments is included on pages 7 and 8 of this newsletter and is available on the LACH web site at <http://parkplanning.nps.gov/noca>.

Thank you for your help!

Sincerely,

Karen Taylor-Goodrich, Superintendent

What is the Purpose of the Proposed Action?

To provide essential, cost-effective and sustainable maintenance, fire operations, solid waste operations, and housing critical to LACH operations outside of environmentally sensitive areas.

Why is the Proposed Action Needed?

LACH facilities need to be removed from the Stehekin River’s floodplain, aging facilities are inefficient to operate and maintain, and a solution for solid waste disposal must be identified and implemented, as described in more detail below.

- Structures within the Stehekin River’s Channel Migration Zone (CMZ) and floodplain modify flood flows, vegetation, and natural channel migration. Flooding also damages NPS property and impacts LACH operations.
- Existing solid waste facilities, LACH maintenance and fire facilities, and infrastructure of a single family house are in poor condition and are inefficient to operate, making them costly to maintain. For some structures, it is now less expensive to build new facilities than repair these existing facilities.
- Built between the 1950s and 1960s, the maintenance facilities, including the solid waste operations, have far exceeded their useful life.
- Recent Integrated Solid Waste Alternatives Program (ISWAP) studies have identified inefficiencies related to the collection and processing of solid waste, as well as ways LACH can better meet federal recycling goals with a new facility.
- The Stehekin community generates approximately 58% of all waste produced in LACH, and its disposal costs approximately \$54,000 per year. The NPS cannot continue to use very limited federal funding for LACH operations to subsidize private waste disposal. Cost sharing opportunities with Chelan County and the Stehekin Community need to be identified.



How to Comment

Do you see problems, concerns or opportunities related to the proposed project that we should know about? Please tell us what you’d like the project team to consider. The NPS web site, listed below, has been set up to receive your input. The site will also provide regular updates about the project’s progress, public meeting announcements, newsletters, and other related documents to review as they become available.

Please provide comments by July 10, 2013. You can provide comments in three ways:

- Attend one of the open house scoping meetings listed on the next page.
- Submit comments electronically on the NPS planning website: <http://parkplanning.nps.gov/noca>
- Provide written comments to:
National Park Service
Lake Chelan National Recreation Area
Replacement of Administrative Facilities at Stehekin EA
810 State Route 20
Sedro-Woolley, WA 98284-1239

Please note: Before including your address, phone number, e-mail address, or other personal identifying information in your comment, you should be aware that your entire comment — including your personal information — may be made publicly available at any time. Although you can request that we withhold your personal identifying information from public view, we cannot guarantee that we will be able to do so.

Next Steps

The process for developing the EA will consist of the following steps:

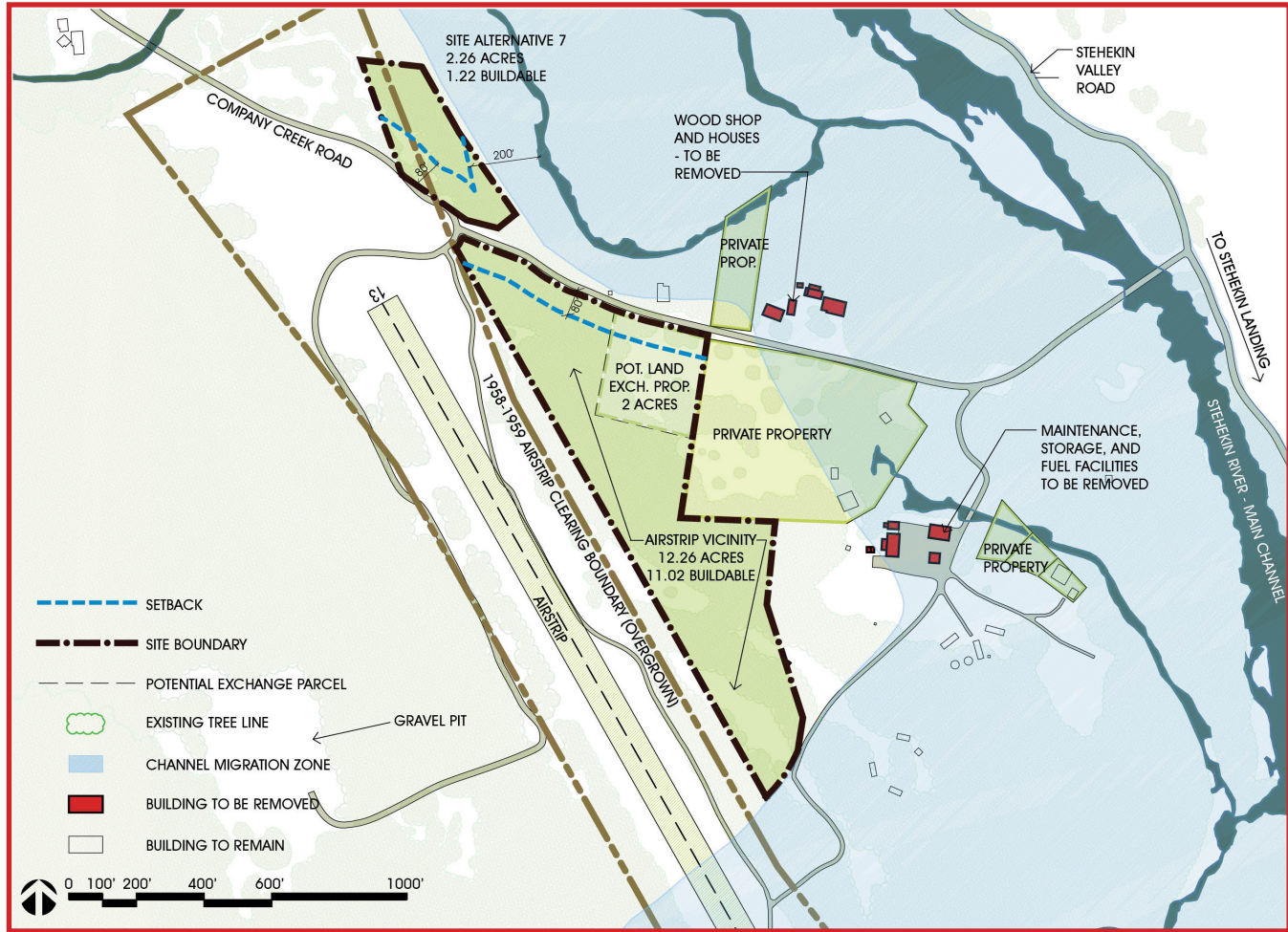
- June/July 2013: Public scoping, including the open houses planned for June, 2013 (dates and locations on back page of this newsletter).
- Fall - Winter 2013: Alternatives development based on the purpose and need, issues, and objectives, with input from the public.
- Fall 2013 - Summer 2014: EA preparation, including the analysis of impacts to LACH’s resources.
- Summer 2014: Release of EA to the public for review and comment.
- Fall 2014: Analysis of public comments and preparation of a decision document.
- Implementation of the proposal as funding allows.



Proposed Facility Locations (continued)

Site 7:
Site 7 is within the Company Creek road and utility line corridor and near the proposed maintenance facility. The property is just outside the airstrip flight path clearance zone.

Airstrip Vicinity Site:
The Airstrip Vicinity Site is within the Company Creek road and utility line corridor and near the proposed maintenance facility. The property is just outside the airstrip flight path clearance zone. Near the airstrip, housing would be located in the vicinity of a 2-acre parcel identified for land exchange in the 2012 Land Protection Plan and near the proposed maintenance facility and fire cache development. Space for administrative/housing purposes is limited at the airstrip and the option of using this exchange parcel is still being considered.



Objectives

The NPS staff developed the following objectives for the proposed action:

- Enhance the ecological integrity of the Stehekin River by removing NPS infrastructure and facilities from the CMZ and restoring the vacated areas.
- Provide low-maintenance, sustainable facilities to support efficient LACH management and operations.
- Reduce the LACH's energy use by designing and building facilities that are energy efficient.
- Minimize adverse impacts to LACH resources.
- Reduce the LACH's maintenance backlog.
- Create architectural designs that are compatible with local building styles.
- Minimize the solid waste stream and improve efficiency of solid waste collection.

Issues

LACH staff identified the following preliminary issues to be analyzed in the EA regarding the location and management of the facilities proposed for relocation. Are there any other issues we should consider?

- Structures within the CMZ and floodplain experience flood-related damage and affect the natural characteristics of the floodplain.
- Construction would disturb soils and landforms, remove vegetation, possibly spread or introduce invasive plants, and affect water quality in the Stehekin River.
- Construction and new development may affect state and federally listed species.
- Visual, dust, noise and light intrusions, and traffic could impact users of Harlequin Campground and visitors and residents near the airstrip.
- Local economic benefits from construction activities could occur.
- The design of the new structures could affect how well the facilities blend with the landscape. New structures may affect specific views.
- Outdated septic systems and storage of hazardous materials in flood-prone areas could impact the environment and public health during a flood. Locating facilities near the airstrip may pose safety concerns during emergency landings.

- Existing facilities and infrastructure are in poor condition, inefficient to operate, and costly to maintain. Fire management operations and maintenance are hampered by lack of adequate facilities. Maintaining winter access to dispersed facilities is difficult and costly.
- A recycling and transfer station is needed in LACH and there is no feasible alternative to collect and transfer solid waste from non-NPS operations. The NPS is pursuing a regulatory change to authorize this action. Cost recovery will be required for solid waste services regardless of the facility operator. The NPS or another entity would run the facility and collect fees.
- Some wildlife species could be attracted to garbage and compost, creating wildlife/human conflicts.



Facility Locations Considered

Seven sites were initially considered for the proposed facilities, in addition to a site near the airstrip, shown in the image below. Some were eliminated for the following reasons; those that were retained are described in more detail on the next pages. Where maintenance and housing facilities are removed, the sites will be revegetated.

Site 1:

Site 1 (0.5 acres) includes existing development, making it difficult to add new structures. Two existing septic tank drain fields occupy most of the site and limit development here. Therefore, this site was eliminated as a viable location for NPS employee housing.

Site 2:

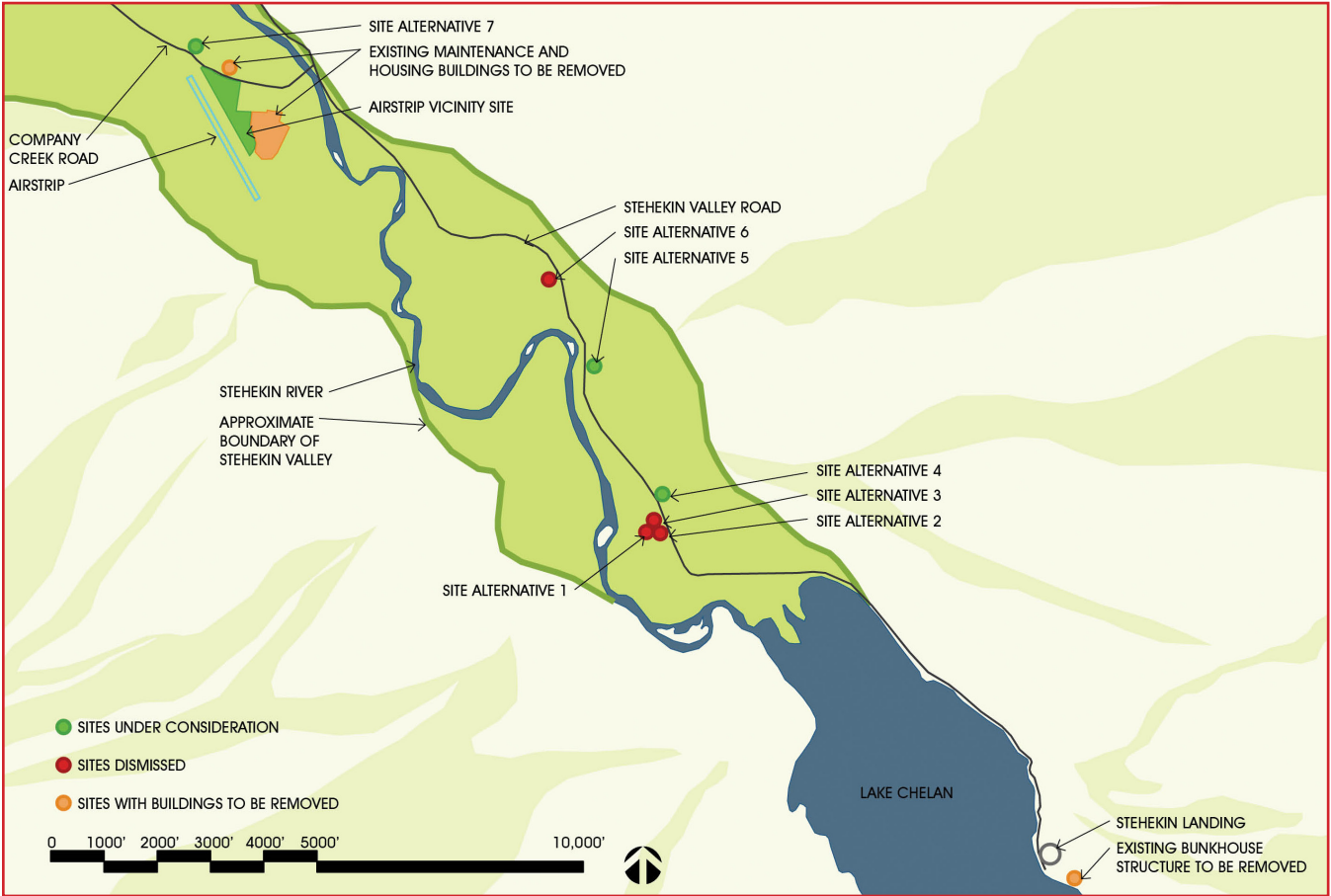
Site 2 (referred to as the 2.61 acre brownfield tract in other planning documents) was removed from consideration because the 2012 Land Protection Plan identifies it for possible land exchange.

Site 3:

Site 3 (1.2 acres) was eliminated from consideration because it is close to an active portion of the Boulder Creek alluvial fan and has insufficient setback from the creek. Also, the 2012 Land Protection Plan identifies it for possible land exchange (part of Keller Park).

Site 6:

Site 6 (roughly 1.8 acres) is north of a driveway that leads to a private house. It was removed from consideration because development in this location could affect the Buckner Orchard Historic District, it has no utilities, and NPS previously restored the property to natural conditions. In addition, this site would cause aesthetic concerns since there is very little development visible from the road in this area.



Proposed Facility Locations

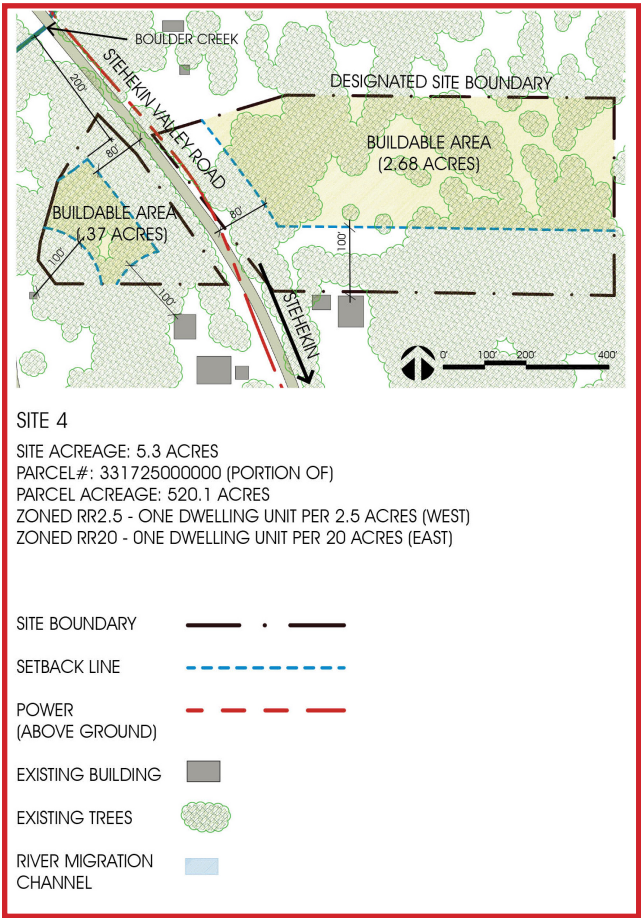
Four locations within the Stehekin Valley from the list on page 4 were retained for consideration based on the following criteria:

- Must be out of the CMZ.
- Should be within 200 feet of existing utility lines and roads.

Additional considerations include:

- Protecting wildlife habitat from further fragmentation by building housing near existing development.
- Using underground utility lines and existing wells, if possible.

These locations are described below and on page 6.



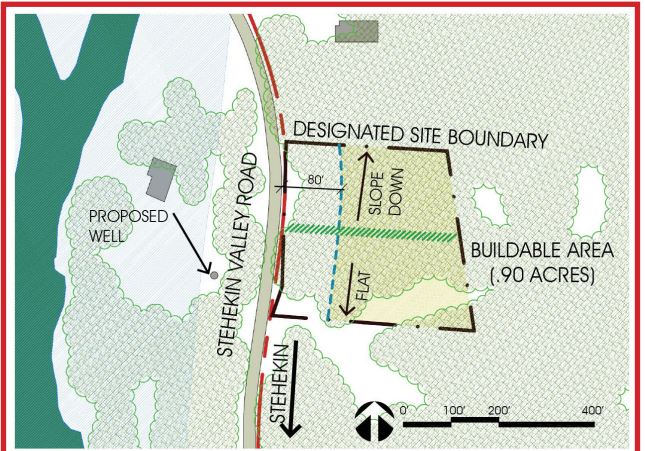
SITE 4
SITE ACREAGE: 5.3 ACRES
PARCEL #: 331725000000 (PORTION OF)
PARCEL ACREAGE: 520.1 ACRES
ZONED RR2.5 - ONE DWELLING UNIT PER 2.5 ACRES (WEST)
ZONED RR20 - ONE DWELLING UNIT PER 20 ACRES (EAST)

Site 5:

Site 5 (1.3 acres) falls within the utility line and road corridor, and is near existing private housing.

Site 4:

Site 4 includes land on both sides of the Stehekin Valley road. The block to the west (1 acre) may be constrained by a dirt access road to a private land parcel and a setback from the creek. The area to the east is a large (4.5 acre) block, although its boundaries may be variable. Both sites are along the road and have utility line access.



SITE 5
SITE ACREAGE: 1.29 ACRES
PARCEL #: 331726140000 (PORTION OF)
PARCEL ACREAGE: 27.92 ACRES
ZONED RR20 - ONE DWELLING UNIT PER 20 ACRES