

National Mall and Memorial Parks

Kennedy Center Expansion Project

Washington, DC Public Scoping Meeting – July 2013

National Park Service
U.S. Department of the Interior



KENNEDY CENTER EXPANSION PROJECT ENVIRONMENTAL ASSESSMENT AND CULTURAL RESOURCES (SECTION 106) CONSULTATION

PUBLIC SCOPING MEETING

WELCOME

Kennedy Center Expansion Project

Washington, DC Public Scoping Meeting – July 2013



TONIGHT'S MEETING

- The purpose of this meeting is to gather early public input on the scope of the study, potential alternatives, and areas of concern.
- This evening's meeting is an “Open House”, during which you will be able to talk directly with members of the NPS/NCPC/KCPA project team.
- You are encouraged to provide your thoughts and ideas in writing or with court reporter.

WE THANK YOU FOR YOUR PARTICIPATION IN THIS PROCESS.



Kennedy Center Expansion Project

Washington, DC Public Scoping Meeting – July 2013



OPPORTUNITIES FOR PUBLIC COMMENT



Tonight:

- Write your comments on the comment cards provided or provide them to the court reporter.

Submit comments electronically:

<http://parkplanning.nps.gov/NAMA>

Written comments may be mailed:

Stantec Consulting Services
Attn: Elizabeth Estes
6110 Frost Place
Laurel, MD 20707

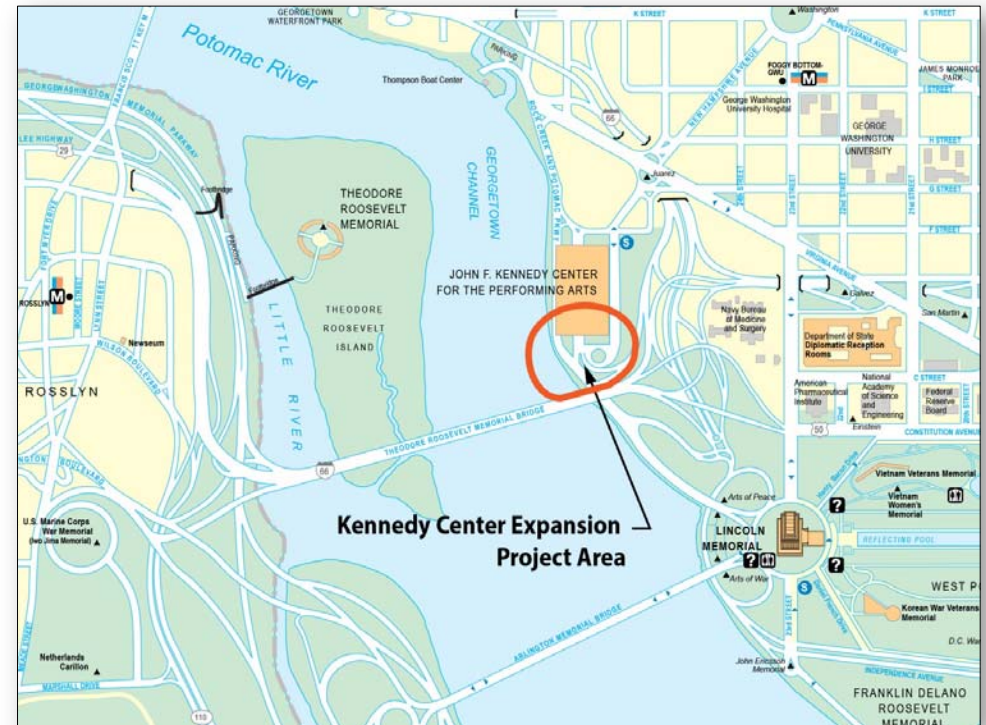
Kennedy Center Expansion Project

Washington, DC Public Scoping Meeting – July 2013



PROJECT LOCATION

- The Kennedy Center is located at 2700 F Street, NW, Washington, DC 20566.
- The project area is defined as the area south of the Kennedy Center and the Potomac River.



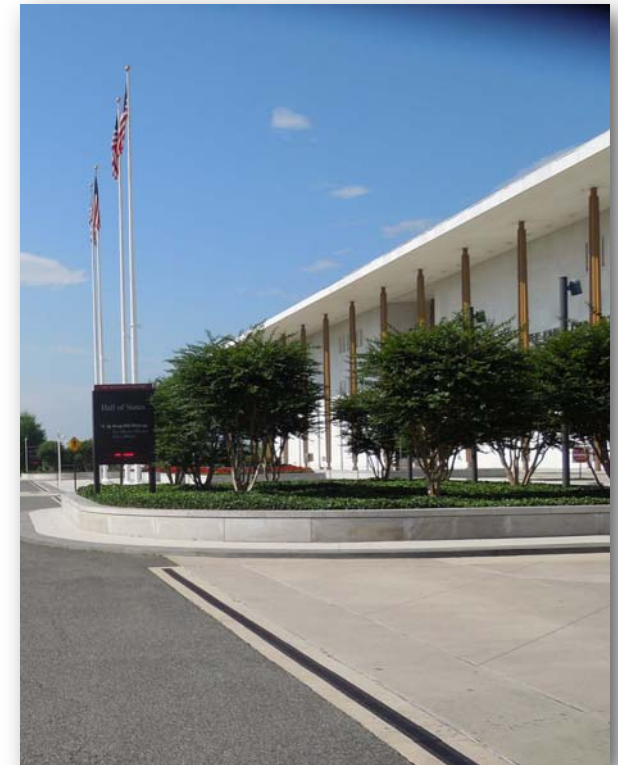
Kennedy Center Expansion Project

Washington, DC Public Scoping Meeting – July 2013



PROJECT OVERVIEW

- The *John F. Kennedy Center for the Performing Arts South Campus Feasibility Study* conducted in January 2012 explored the viability of undertaking an expansion project on the site.
- Concept level designs have been developed for expanding the south side of the Kennedy Center and were presented to the US Commission of Fine Arts (CFA). They will be presented to the National Capital Planning Commission (NCPC) for review in September.
- NPS and NCPC acting as co-lead agencies, in cooperation with the Kennedy Center, have initiated work on an Environmental Assessment (EA) and the Section 106 review to evaluate the impacts of these designs.
- A jurisdictional transfer of NPS land may be required for the implementation of the proposed action.



Kennedy Center Expansion Project

Washington, DC Public Scoping Meeting – July 2013



PURPOSE:

The purpose of the proposed expansion is to improve the facilities of the Kennedy Center by adding space for classrooms, rehearsal rooms, event spaces, and offices in a dedicated area.

NEED:

The project is needed because the Kennedy Center, with the largest performing arts education initiative in the country, contains no dedicated classrooms, a limited number of rehearsal rooms, and no dedicated event space.



Kennedy Center Expansion Project

Washington, DC Public Scoping Meeting – July 2013



ENVIRONMENTAL ISSUES AND IMPACT TOPICS:

- Floodplains
- Vegetation
- Scenic Resources/Viewsheds
- Historic Structures and Districts
- Cultural Landscapes
- Visitor Use and Experience
- Park Operations and Management
- Traffic and Transportation
- Land Use
- Water Resources/Water Quality



Kennedy Center Expansion Project

Washington, DC Public Scoping Meeting – July 2013



NATIONAL ENVIRONMENTAL POLICY ACT (NEPA) PROCESS



Kennedy Center Expansion Project

Washington, DC Public Scoping Meeting – July 2013



NATIONAL HISTORIC PRESERVATION ACT (NHPA)



Let the project team know if you or your organization would like to sign up as a Consulting Party for this project. We thank you for your participation in this process.

Define the Undertaking/ Initiate Section 106

Identify Consulting Parties

Involve the Public

We are here

Define the Area of Potential Effect (APE)

Identify Cultural Resources within the APE

Assess Effects on Significant Resources

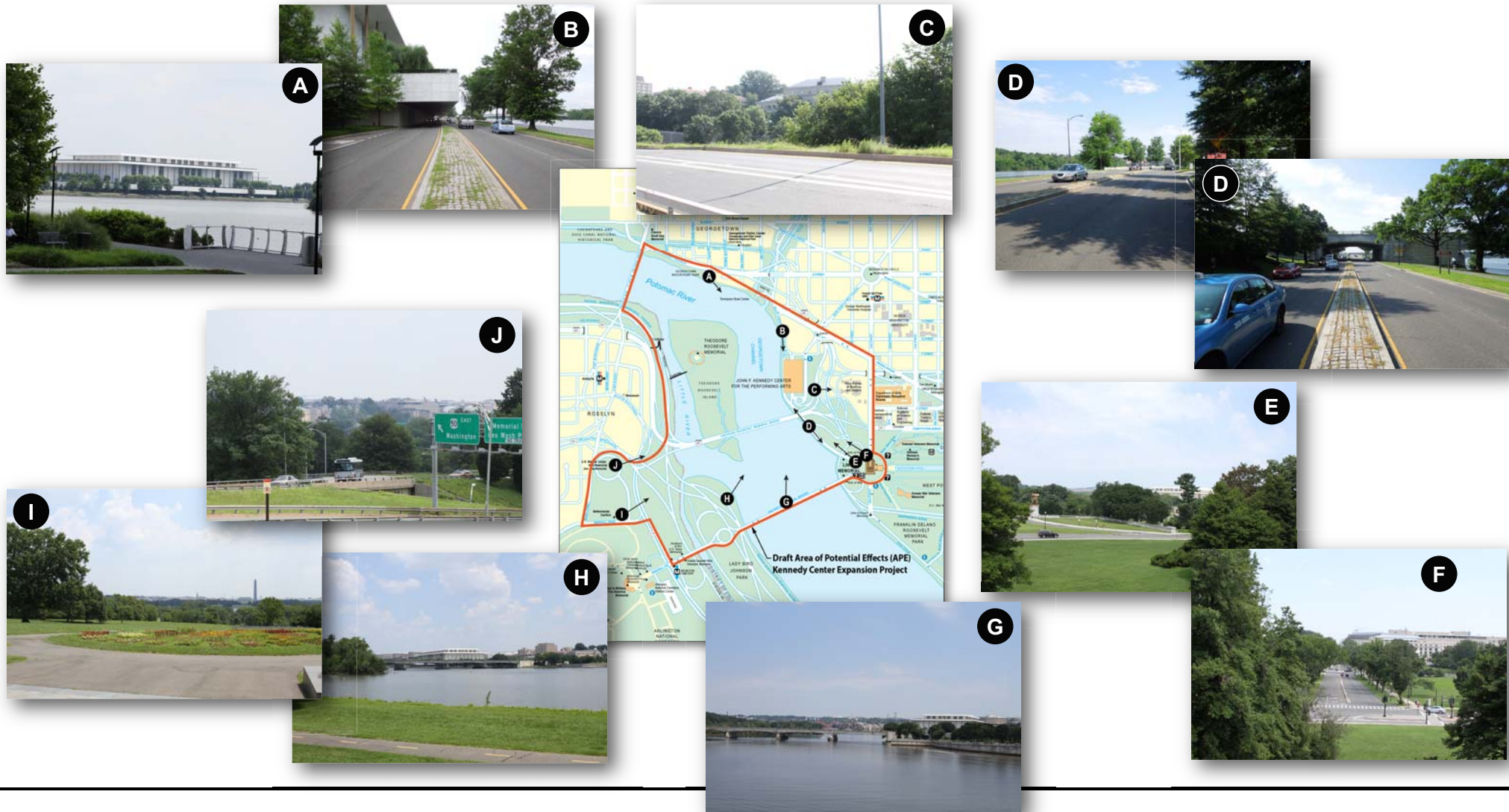
Apply Criteria of Adverse Effect

Continue Consultation

Draft an Agreement Document, if needed

Kennedy Center Expansion Project

Washington, DC Public Scoping Meeting – July 2013





KENNEDY CENTER EXPANSION ALTERNATIVES

No Action Alternative

This provides a basis for evaluating the impacts of the action alternatives.



Conceptual Design Alternatives

Multiple conceptual designs have been developed to provide additional classroom and rehearsal space. These designs included the following:

- Pavilion with Glass Connection Concept
- Glass Cubic Pavilion Concept
- Stepping Green Terraces Concept
- Pavilion Concept
- River Pavilion Concept

Kennedy Center Expansion Project

Washington, DC Public Scoping Meeting – July 2013



ACCESS OPTIONS TO RIVER PAVILION:

Multiple conceptual designs have been developed to provide access from the Kennedy Center to the River Pavilion. These designs include the following:



**At Grade
Crossing**

**One
Access Bridge**



**Two
Access Bridge**

**No Access
Bridge**

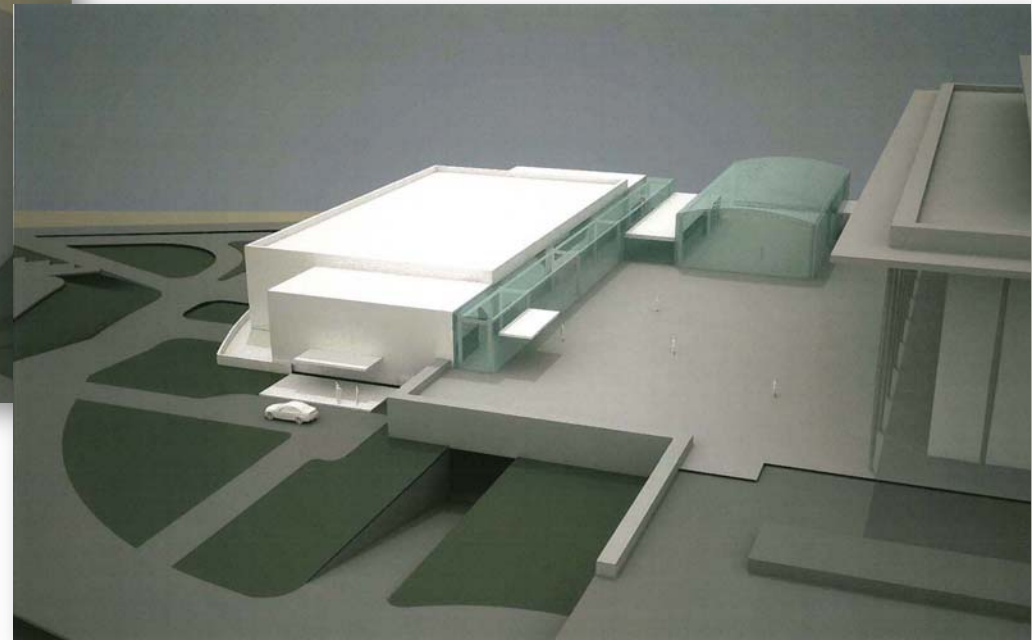
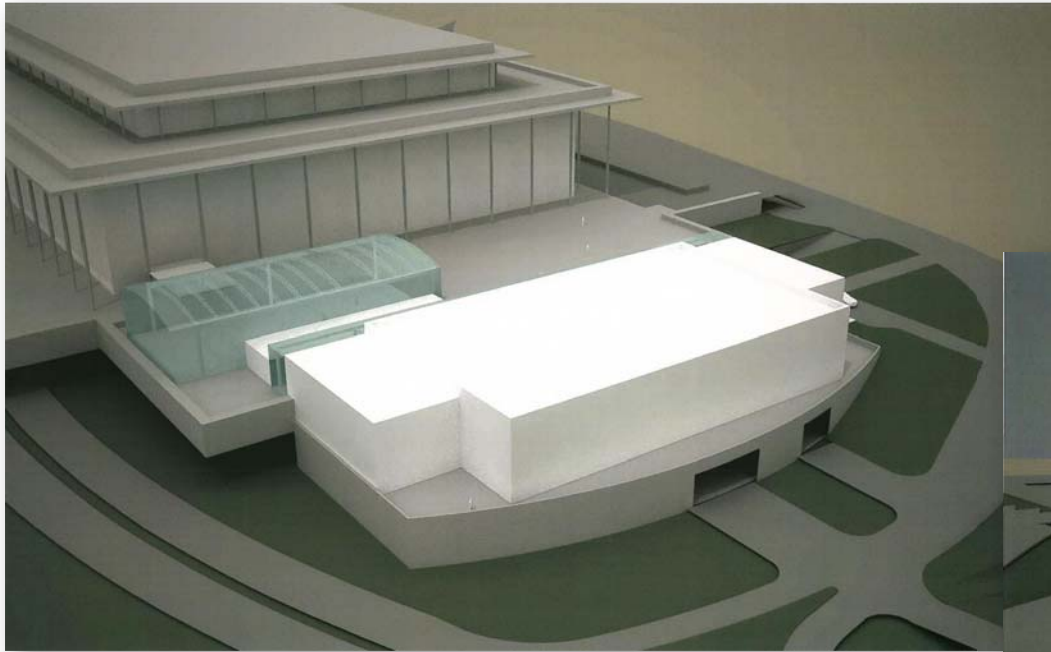


Kennedy Center Expansion Project

Washington, DC Public Scoping Meeting – July 2013



Pavilion with Glass Connection Concept



Kennedy Center Expansion Project

Washington, DC Public Scoping Meeting – July 2013



Glass Cubic Pavilion Concept

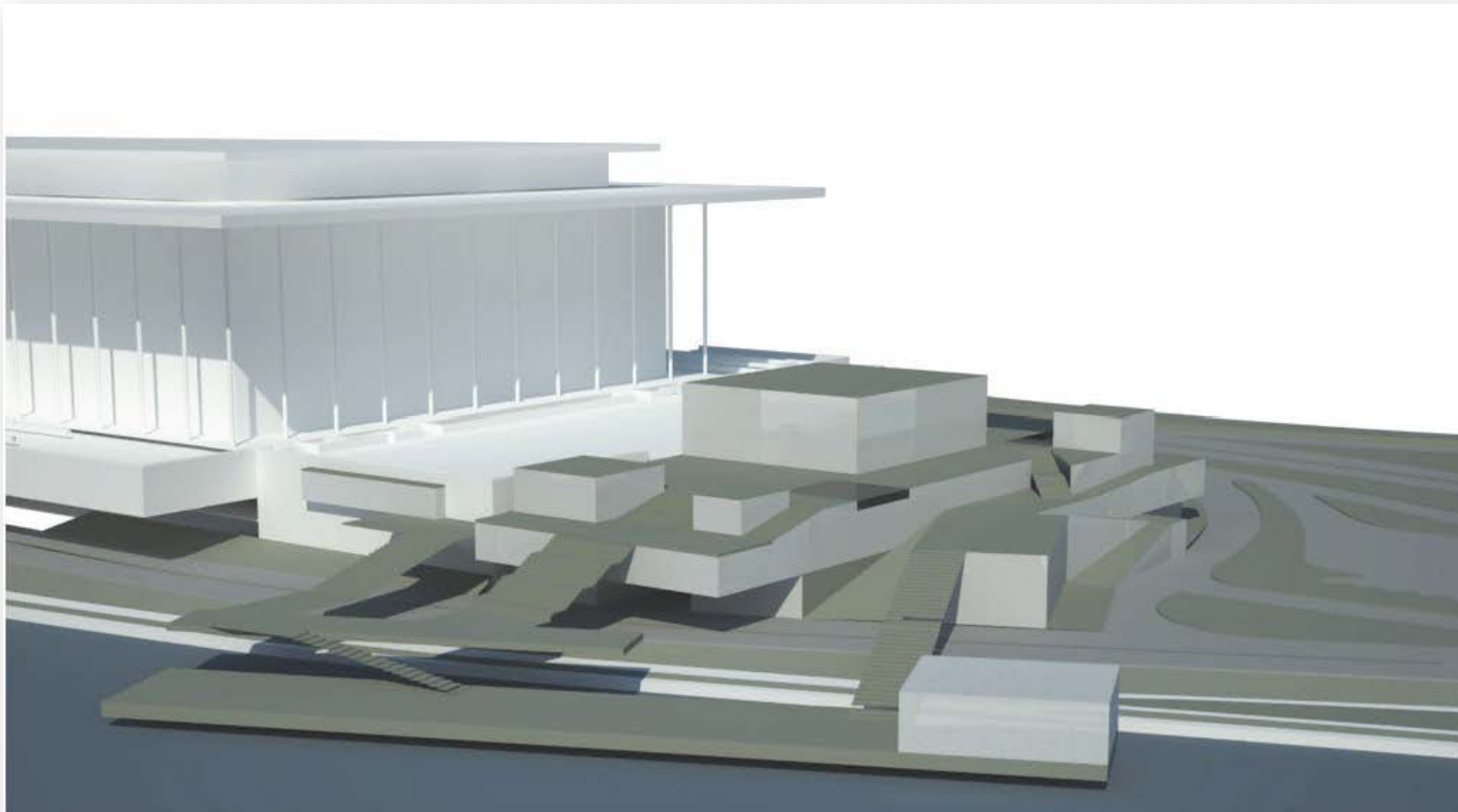


Kennedy Center Expansion Project

Washington, DC Public Scoping Meeting – July 2013



Green Terraces Concept

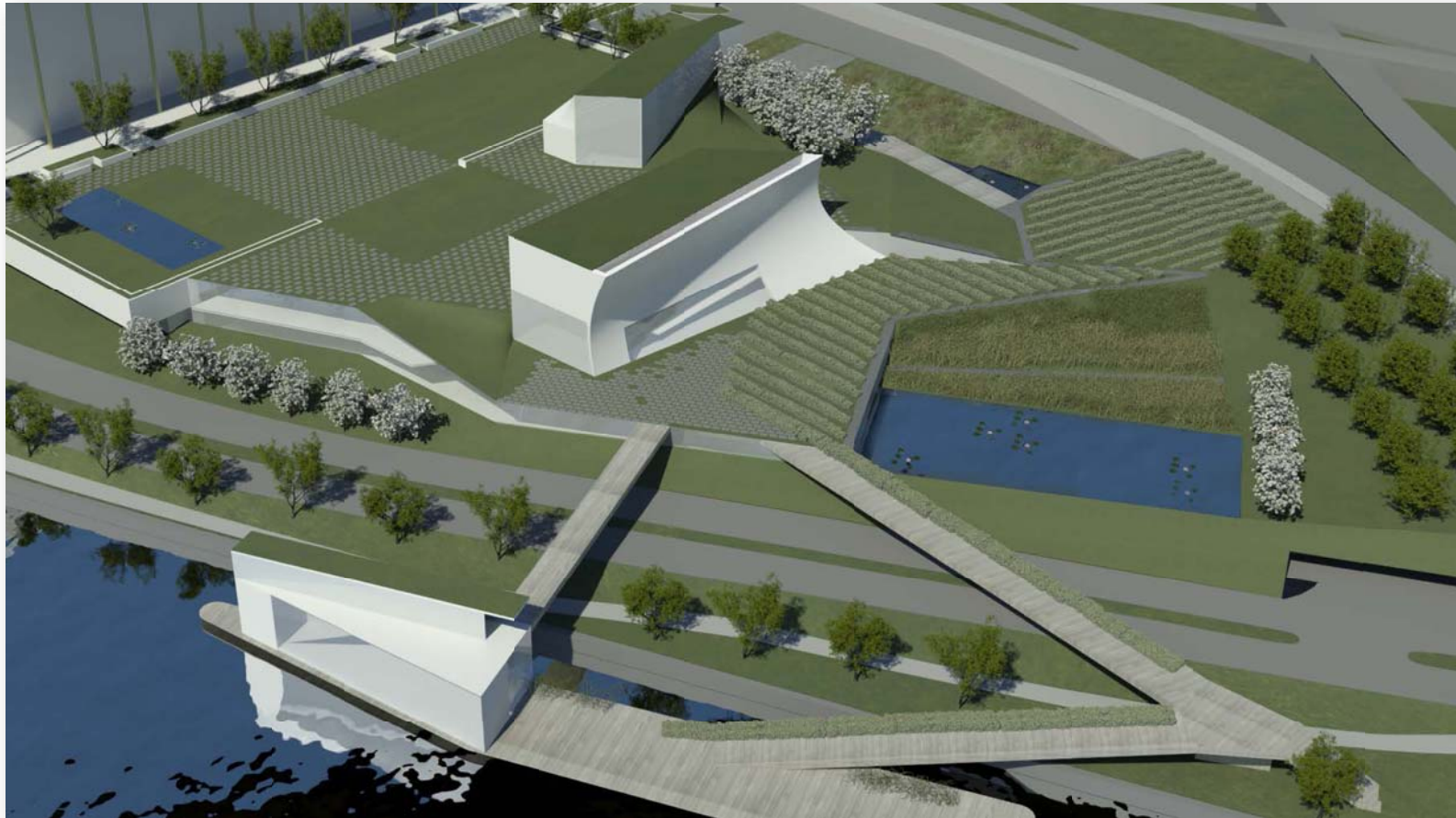


Kennedy Center Expansion Project

Washington, DC Public Scoping Meeting – July 2013



River Pavilion Concept



Kennedy Center Expansion Project

Washington, DC Public Scoping Meeting – July 2013



SCHEDULE/NEXT STEPS:

Milestone	Date
Public Meeting	Tonight
End of Public Scoping Period	August 30, 2013
Begin Preparation of Environmental Assessment	August 2013
Environmental Assessment Available for Public Review	November 2013
EA Public Comment Period (45 days)	November/December 2013
Section 106 Consulting Parties Meeting	December 2013
Preparation of Decision Document	January 2014