

# CRISSY REFRESH GOALS

## 1 CREATE A FLEXIBLE & ADAPTABLE FRAMEWORK

Adapt to changing conditions -- user needs, sea level rise, adjacent land uses.



## 2 ENHANCE THE QUALITY OF USER EXPERIENCE

Promote a range of park programs and park areas that prioritize play, education, relaxation, and family.



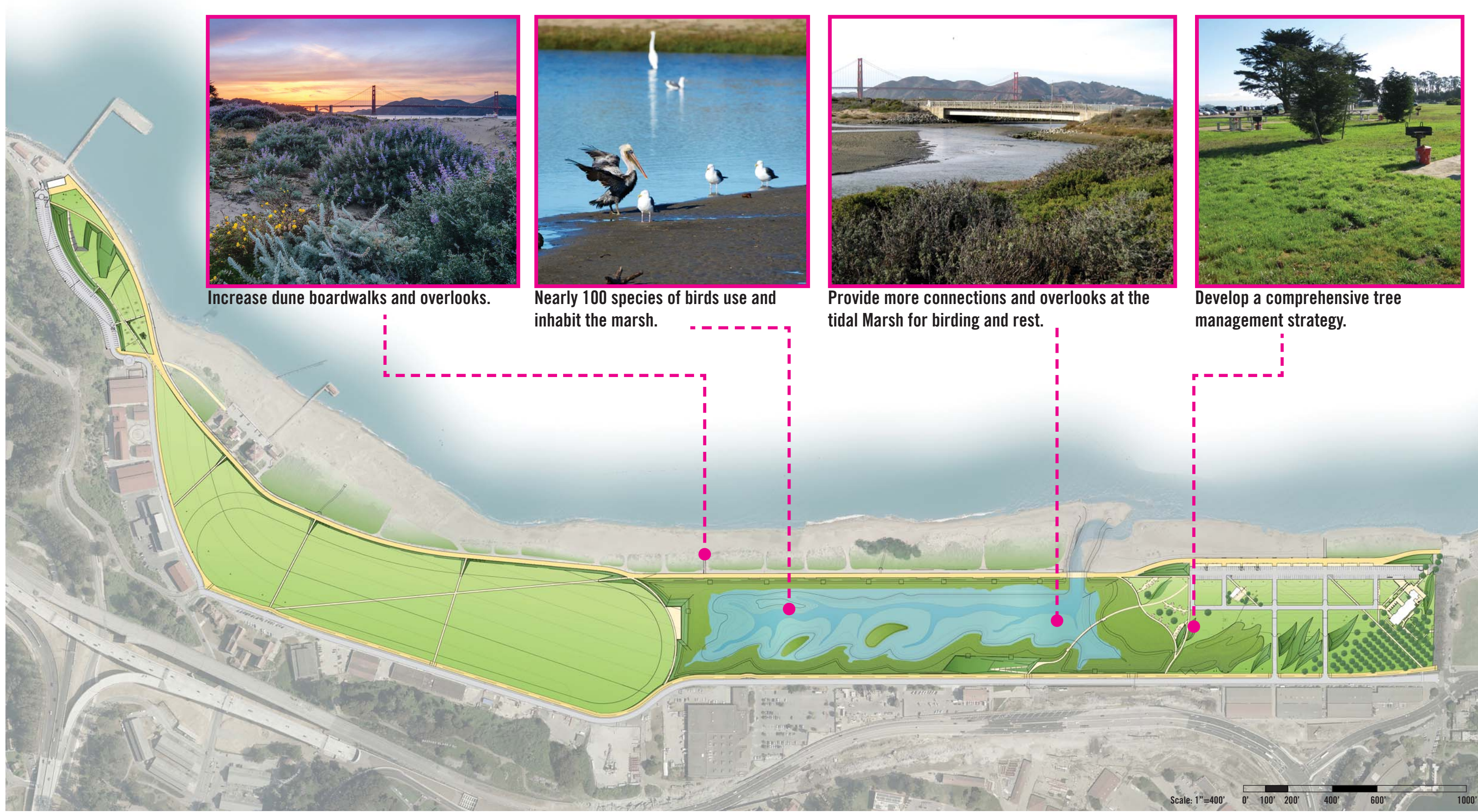
## 3 CELEBRATE CRISSY FIELD'S HISTORIC CHARACTER

Expand historical interpretation and public awareness through program and park design features.



## 4 PRESERVE AND ENHANCE CRISSY FIELD'S NATURAL RESOURCES

Expand and enhance ecological services and educational opportunities.



## 5 ATTRACT UNDERSERVED COMMUNITIES

Encourage families and youth to experience Crissy Field for its culture, history, views, ecology, and recreation. Improve Crissy Field's connection to the rest of the city.



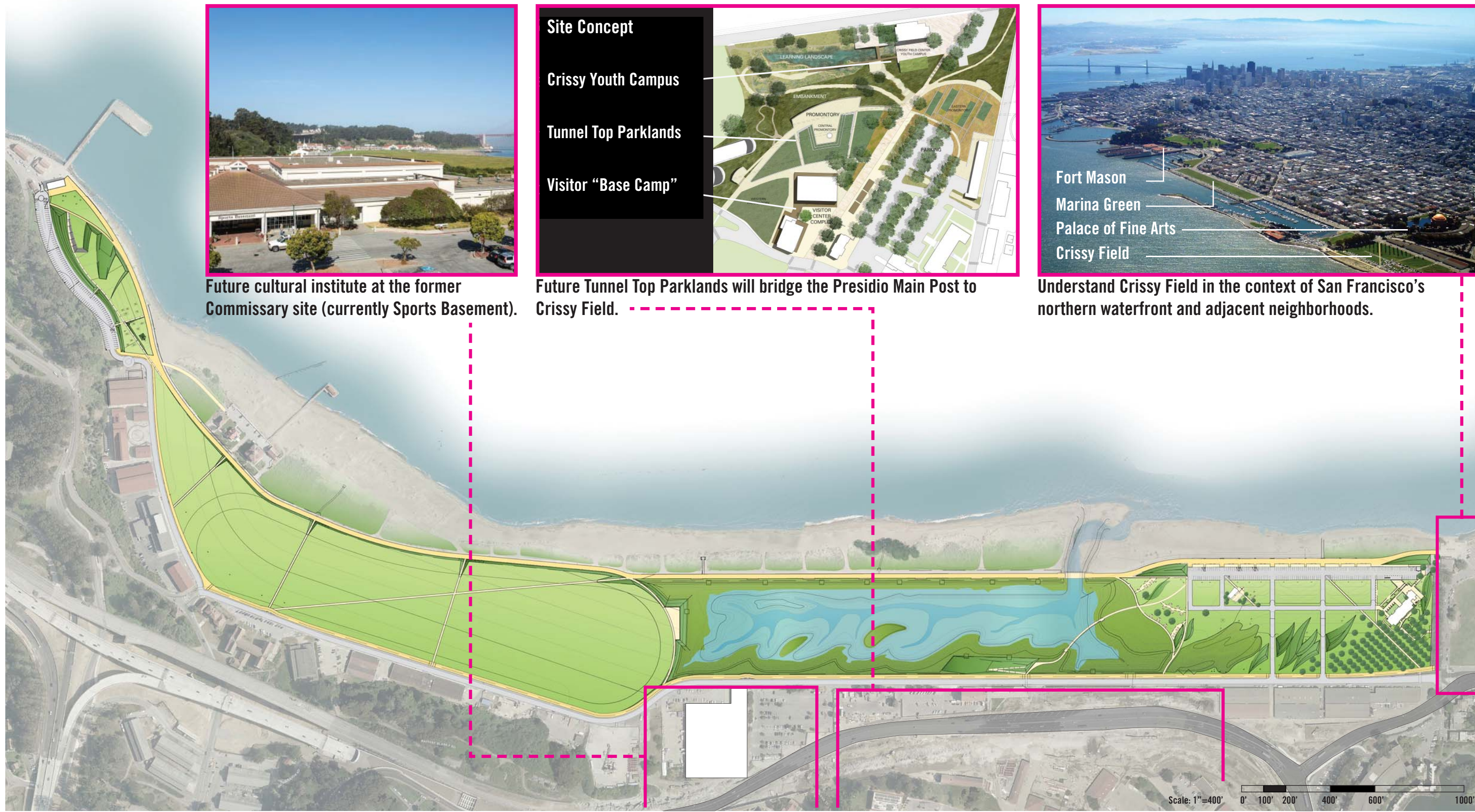
## 6 BALANCE MAINTENANCE INVESTMENTS WITH HIGH QUALITY RETURNS

Increase park durability and minimize extensive maintenance requirements. Higher maintenance investment areas will correspond to areas of high user value.



## 7 INTEGRATE CRISSY FIELD WITH SURROUNDING RESOURCES

Integrate Crissy Field with future Presidio developments, with surrounding city amenities, and the greater San Francisco waterfront.



## 8 IMPROVE CIRCULATION AND ACCESS FOR ALL MODES

Prioritize pedestrian access. Improve bicycle circulation and safety. Reduce vehicle circulation and parking conflicts.

