



WELCOME

TO THE PUBLIC MEETING FOR THE



FRANKLIN PARK

VISION + TRANSFORMATION PLAN

February 19, 2014

PURPOSE & NEED



PURPOSE

The purpose of the project is to revitalize Franklin Park in a manner that respects and enhances the historic and urban qualities of the park while transforming it into an active, flexible, and sustainable park that is connected to its community.

NEED

As a large park situated within the increasingly populated center city, lacking access to open space, Franklin Park provides a unique opportunity to serve the community and enhance urban living. Currently, park features are deteriorated and essential services, such as adequate seating and programming, are lacking. In addition, opportunities exist for better connections to both the historic and current urban context. The project is needed to address these deficiencies and revitalize the park so that it attracts and serves all visitors.

LAWS & PROCEDURES



NEPA NATIONAL
ENVIRONMENTAL
POLICY ACT

NHPA NATIONAL HISTORIC
PRESERVATION ACT
SECTION 106

NEPA PROCESS

POLICY

NEPA National Environmental Policy Act

THE NATIONAL ENVIRONMENTAL
POLICY ACT OF 1969, AS AMENDED
(42 U.S.C. 4321 ET SEQ.)

CEQ Council on Environmental Quality

"REGULATIONS FOR IMPLEMENTING
THE PROCEDURAL PROVISIONS OF
NEPA" (40 CFR 1500-1508).

DO-12 Department of the Interior, Director's Order 12

DIRECTOR'S ORDER #12:
CONSERVATION PLANNING,
ENVIRONMENTAL IMPACT ANALYSIS,
AND DECISION-MAKING

PROCESS

1. PUBLIC NOTIFICATION
2. DEFINE PURPOSE & NEED – FOR THE PROPOSED ACTION, DETERMINE PROJECT AREA, DEFINE FRAMEWORK WITHIN WHICH REASONABLE ALTERNATIVES CAN BE DEVELOPED, AND DEVELOP PRELIMINARY ALTERNATIVES
3. INTERNAL AND EXTERNAL SCOPING - TO INTRODUCE PROJECT AND IDENTIFY ISSUES
4. DEFINE PRELIMINARY ALTERNATIVES
5. PUBLIC COMMENT PERIOD ON ALTERNATIVES
6. DATA COLLECTION - BEGIN RESOURCE INVENTORY AND ANALYSIS, DETERMINE RESOURCE TOPICS AFFECTED BY THE PROPOSED ACTION, AND INITIATE DATA COLLECTION/ RESEARCH NEEDED TO CARRY IMPACT ANALYSIS FORWARD
7. DESCRIBE THE AFFECTED ENVIRONMENT, REFINE ALTERNATIVES, AND PREPARE IMPACT ANALYSIS OF AFFECTED RESOURCE TOPICS
8. PREPARE DRAFT ENVIRONMENTAL ASSESSMENT (EA) FOR INTERNAL AGENCY REVIEW, PREPARE FINAL EA FOR PUBLIC COMMENT
9. RELEASE EA FOR 30-DAY PUBLIC COMMENT PERIOD
10. REVIEW ALL PUBLIC COMMENTS RECEIVED ON THE EA AND RESPOND TO COMMENTS
11. PREPARE AND FINALIZE APPROPRIATE DECISION DOCUMENT

POTENTIAL IMPACT TOPICS

- SOILS
- WATER QUALITY
- VISITOR USE + EXPERIENCE
- CULTURAL RESOURCES (CULTURAL LANDSCAPES + HISTORIC STRUCTURES)
- LAND USE
- SOCIOECONOMICS
- TRAFFIC + TRANSPORTATION
- PUBLIC SAFETY
- PARK MANAGEMENT + OPERATIONS
- VEGETATION

NHPA SECTION 106 PROCESS

POLICY

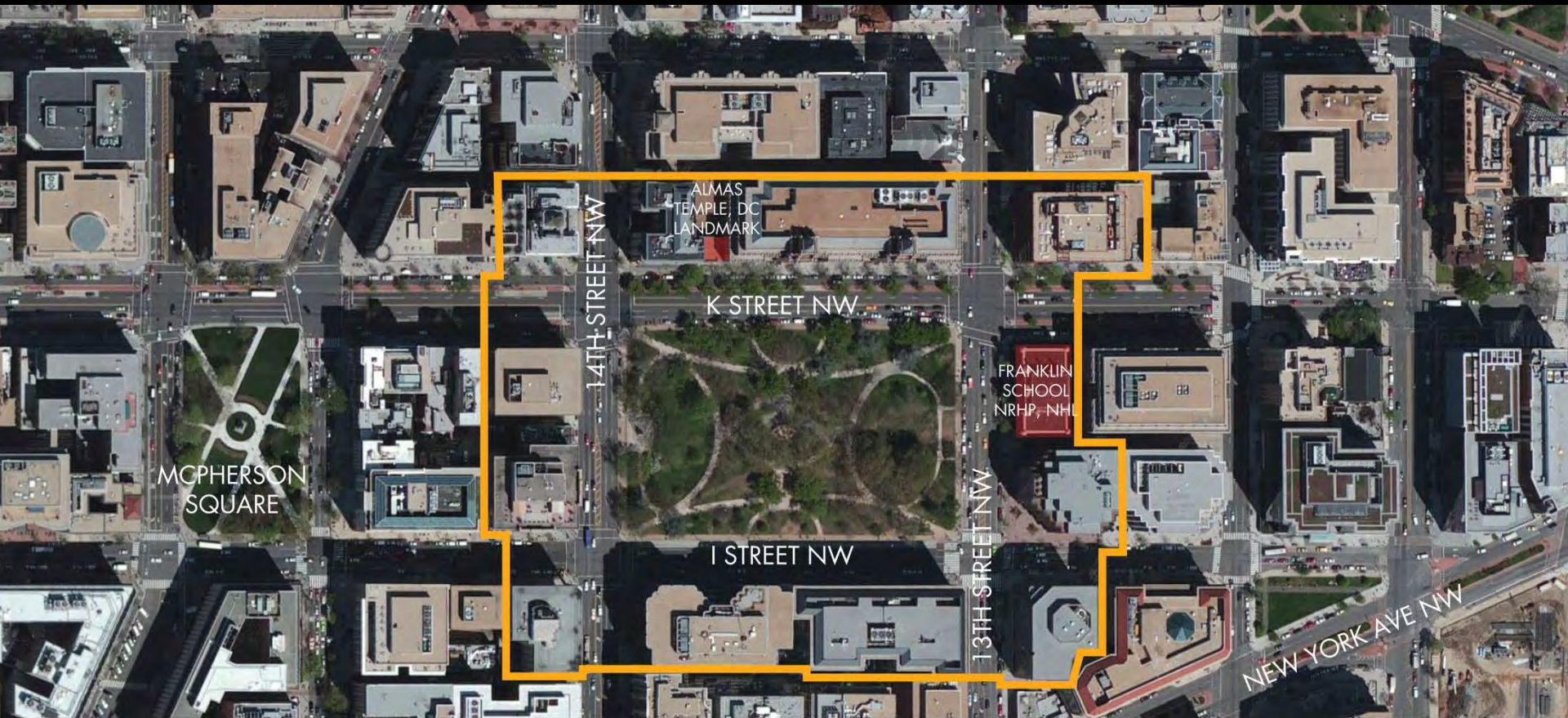
NHPA National Historic Preservation Act

SECTION 106
REGULATIONS, 36 CFR
PART 800

PROCESS

1. DEFINE UNDERTAKING / INITIATE SECTION 106
2. INVOLVE THE PUBLIC
3. IDENTIFY CONSULTING PARTIES
4. DEFINE AREA OF POTENTIAL EFFECT (APE)
5. IDENTIFY SIGNIFICANT CULTURAL RESOURCES IN APE
- 6. ASSESS EFFECTS ON SIGNIFICANT RESOURCES**
7. APPLY CRITERIA OF ADVERSE EFFECT
8. CONTINUE CONSULTATION
9. DRAFT AGREEMENT DOCUMENT, IF NEEDED

DRAFT APE



LEGEND

 Proposed Draft Area of Potential Effect (APE)

NORTH



PROPOSED ACTION

The NPS and partners are beginning to develop a comprehensive plan and conceptual design for transforming Franklin Park into a premier active, flexible, and sustainable historic urban park connected to its community.



OPPORTUNITIES TO COMMENT

YOUR COMMENTS ARE ESSENTIAL TO THIS PROCESS.

Please submit comments by **March 14, 2014** at:

[*www.parkplanning.nps.gov/FranklinPark*](http://www.parkplanning.nps.gov/FranklinPark)

OR MAIL TO:

ATTN: Franklin Park Project
Superintendent
National Mall and Memorial Parks
900 Ohio Drive, SW
Washington, DC 20024





EXISTING CONDITIONS

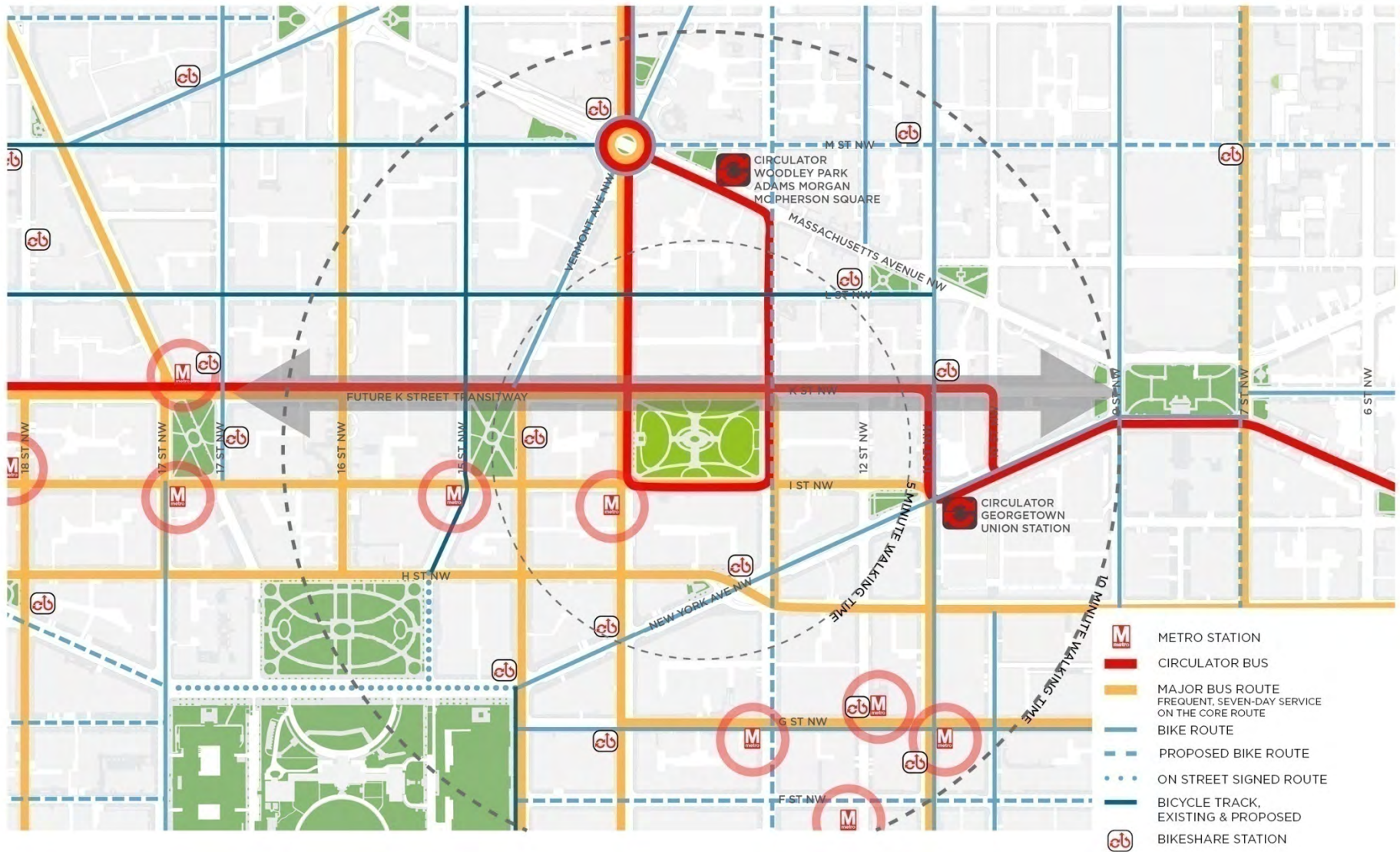
PROJECT GOALS

SITE PROGRAM

CONCEPT ALTERNATIVES

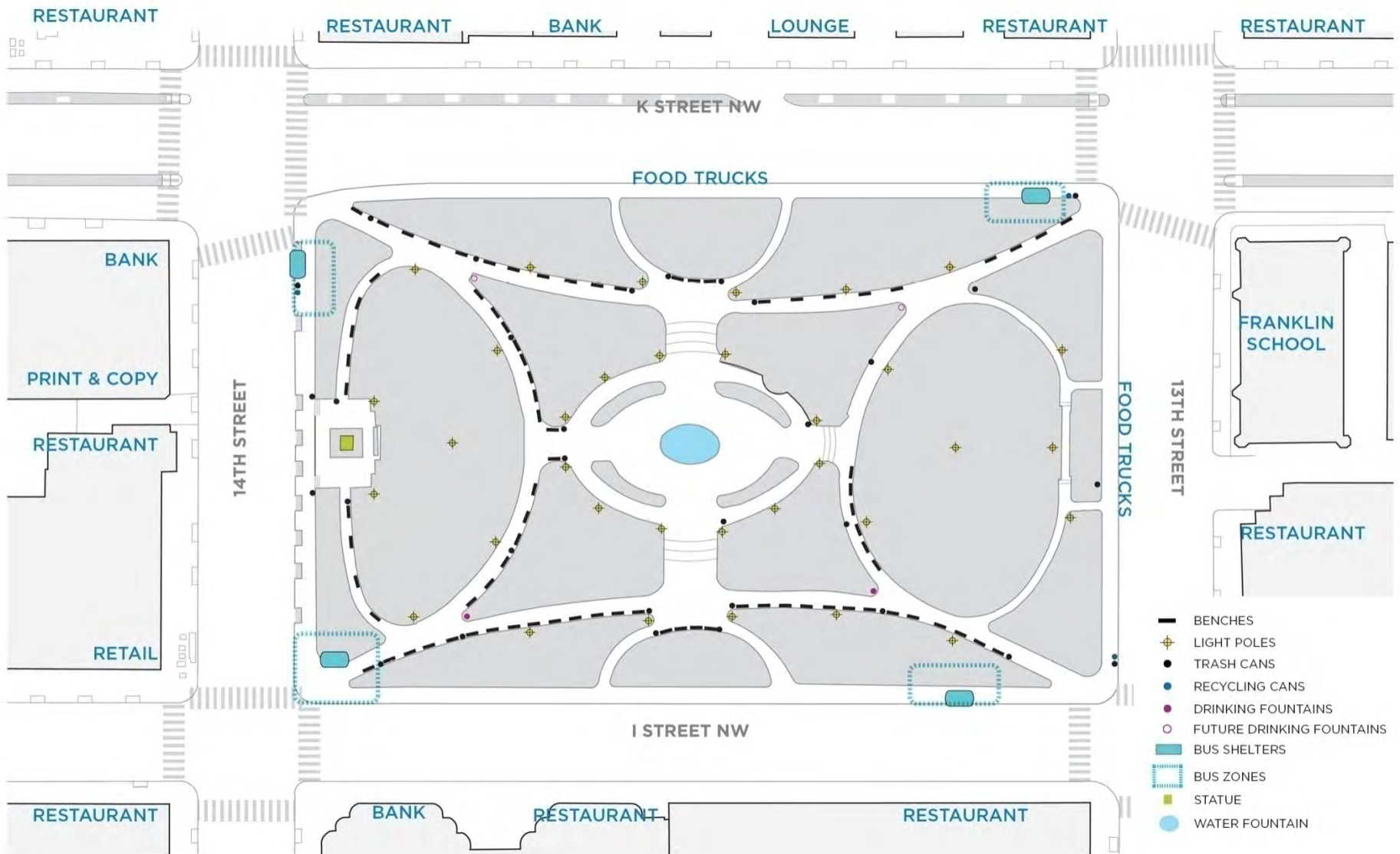
TOPICS

EXISTING
CONDITIONS

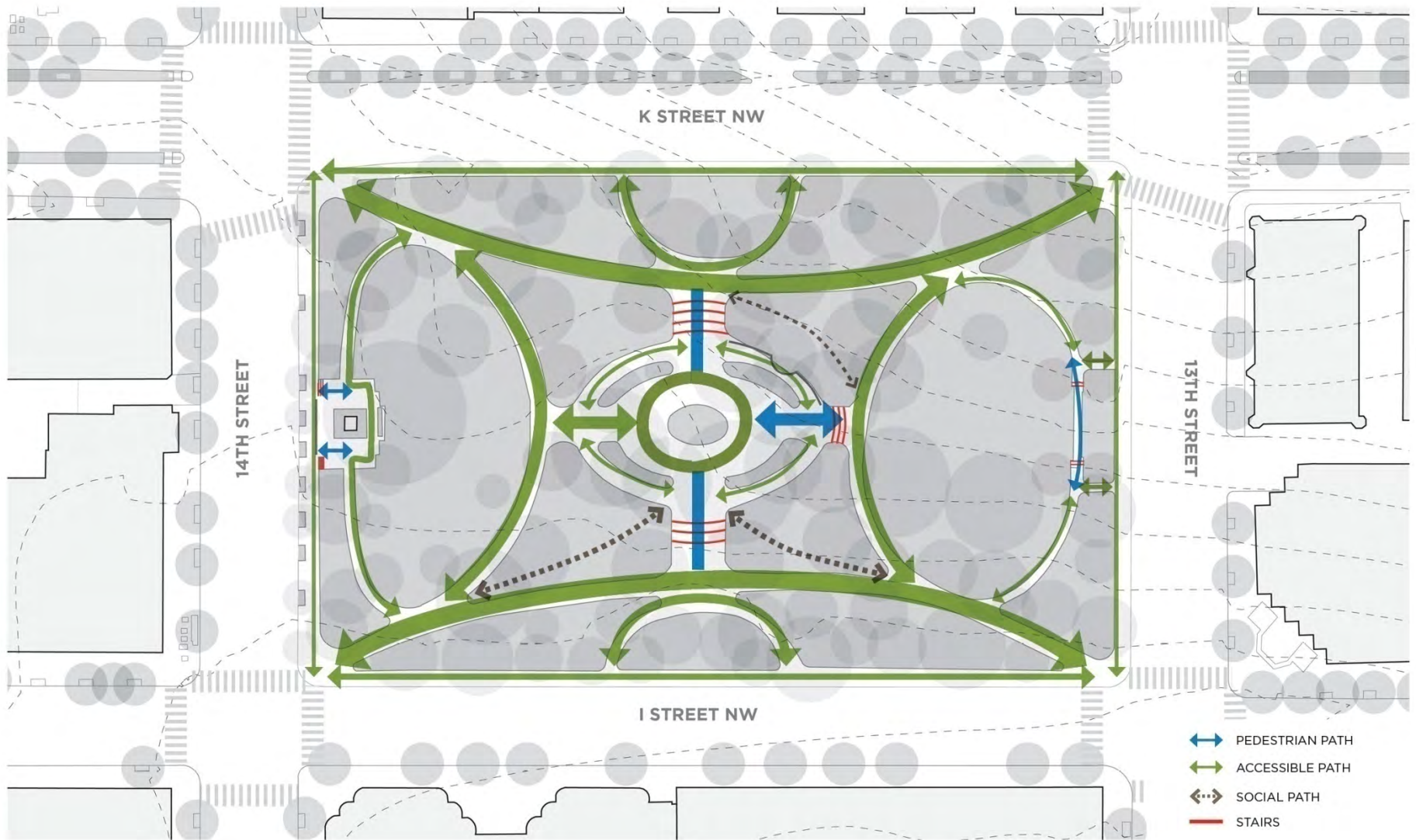


• Franklin Park services 32 different Metrobus lines + 2 DC Circulator routes

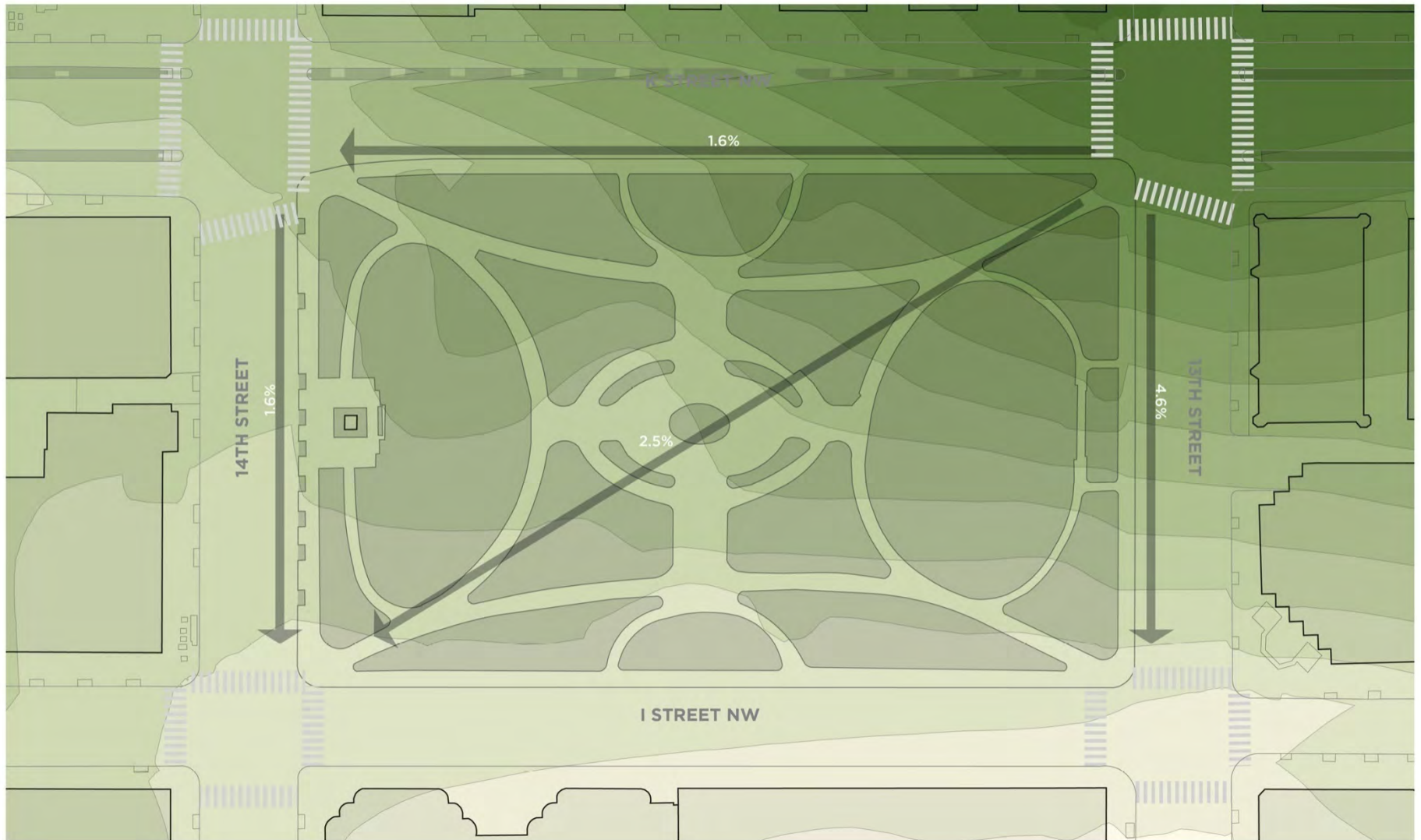
OLIN + ZGF



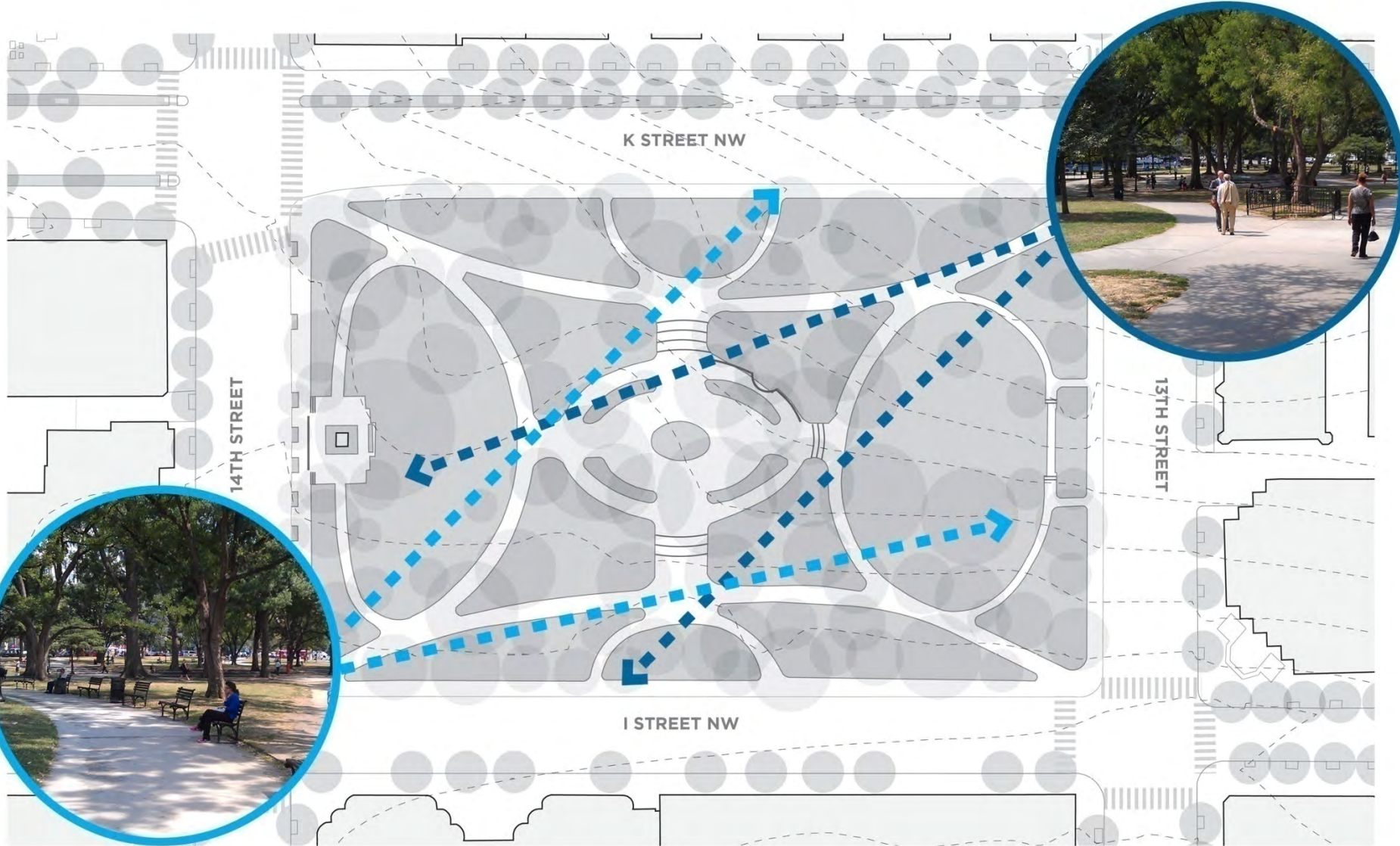
OLIN + ZGF



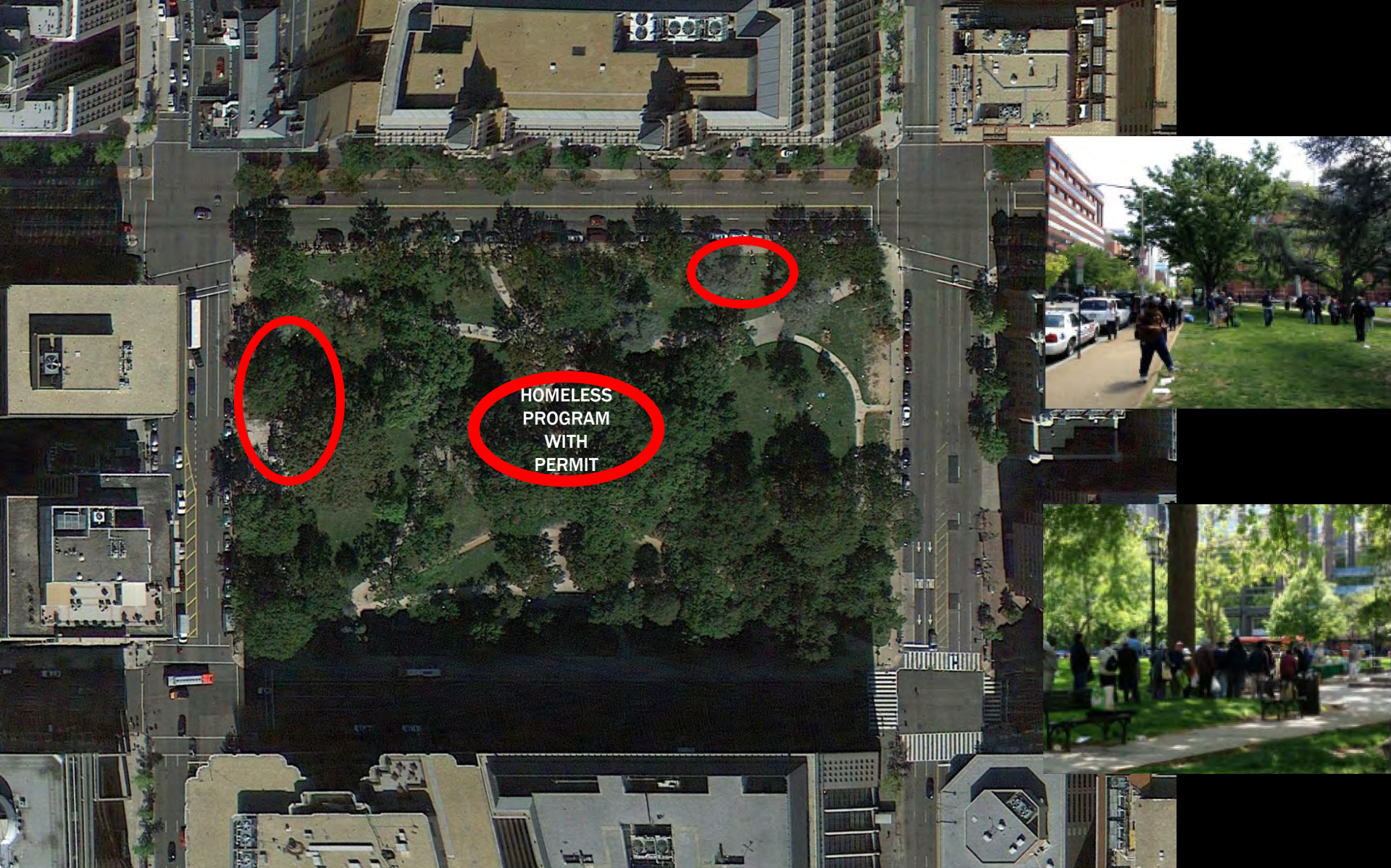
OLIN + ZGF



OLIN + ZGF



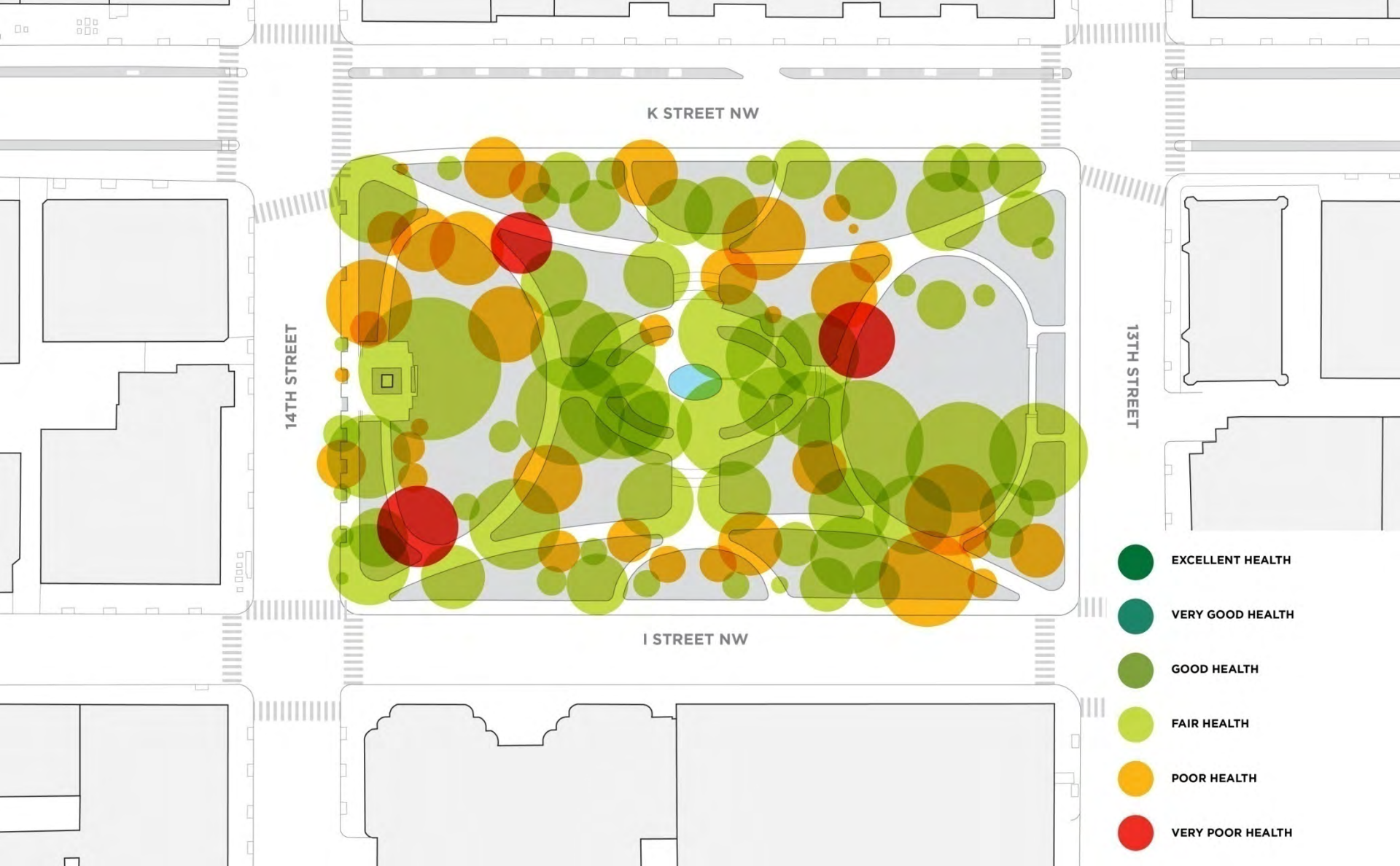
OLIN + ZGF





Observed Truck Parking

- Food Trucks attract over 1,200 people to Franklin Park during lunch



OLIN + ZGF

IDEAL AGE DISTRIBUTION



40%



30%



20%



10%

FRANKLIN PARK



20%



27%



16%



37%

ACTIVATE THE PARK

ENGAGE AND CONNECT THE COMMUNITY

REVEAL HISTORY

INFUSE SUSTAINABILITY

MANAGE AND FINANCE FOR SUCCESS

PROJECT GOALS

ACTIVATE THE PARK:

**Provide active and passive recreational opportunities,
essential services, events and programs**



ENGAGE THE COMMUNITY:

**Create an enhanced streetscape and public realm
integrated with multiple modes of transportation**



REVEAL HISTORY:

**Celebrate and respect the park's historic character
and sense of place**



INFUSE SUSTAINABILITY:

Design a sustainable, maintainable, and ecologically sensitive place that serves a diverse group of users



MANAGE AND FINANCE FOR SUCCESS:

Utilize a public/private management structure to fund, program, and maintain the park

PIONEER
COURTHOUSE
SQUARE

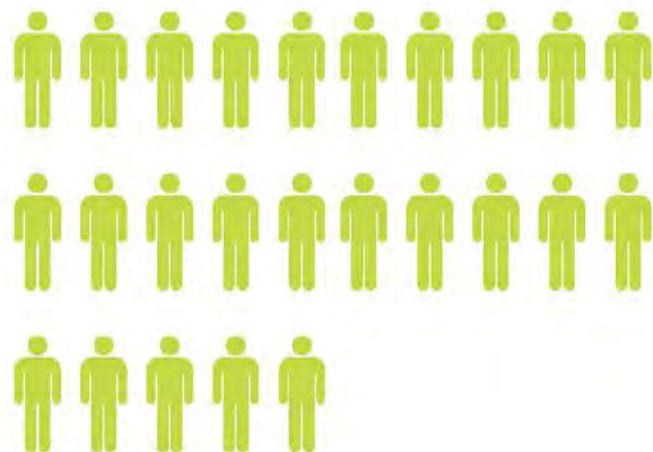
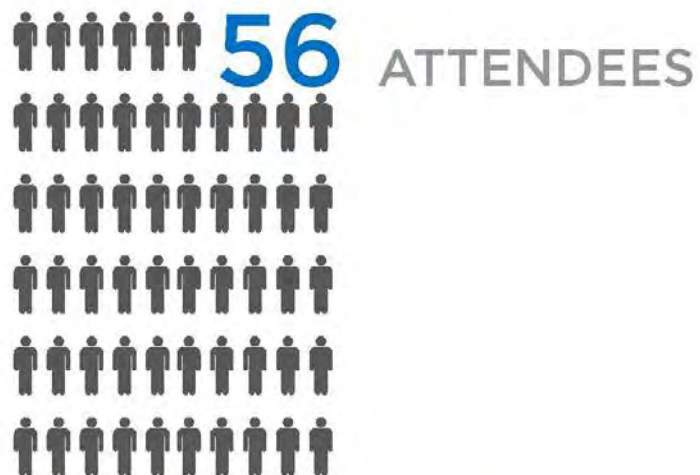


SITE PROGRAM

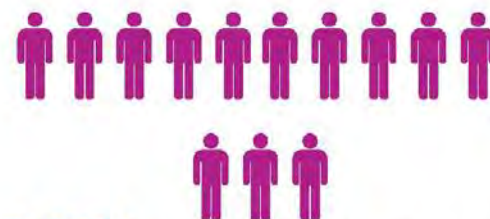


PUBLIC MEETING

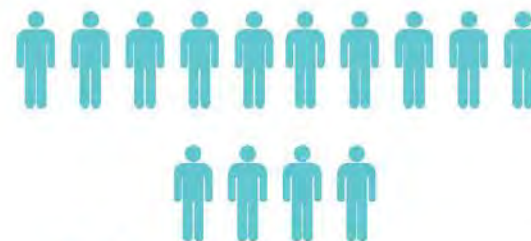




45% LIVE AND WORK
NEAR FRANKLIN PARK



23% WORK NEAR
FRANKLIN PARK



25% LIVE NEAR
FRANKLIN PARK



7% NEITHER WORK NOR
LIVE NEAR FRANKLIN PARK

1

SEASONAL PLANTINGS

22 VOTES



2

CHILDREN'S PLAY AREA

20 VOTES



3

MOVEABLE TABLES AND CHAIRS REST ROOMS

17 VOTES



4

INTERACTIVE WATER FEATURE

16 VOTES



5

MUSIC IN THE PARK

14 VOTES



6

NIGHT EVENTS

13 VOTES



7

OPEN LAWN

12 VOTES



HISTORIC INTERPRETATION

LIGHTING SAFETY

FARMERS MARKETS

ENHANCED SEATING

FITNESS IN THE PARK

8

RESTORED FOUNTAIN

11 VOTES



9

FOOD SERVICE

10 VOTES



10

FESTIVALS IN THE PARK ART

9 VOTES



PROPOSED PROGRAM



seasonal
plantings



historic
interpretation



cafe



open lawn



children's
play area



interactive
water feature



events

Water Elements– Goals for Design



Water elements should be designed to engage both children and adults, allow people to easily touch the water, and explore the various expressions of water -calm and still and/or playful and lively.

Children's Play Area– Goals for Design



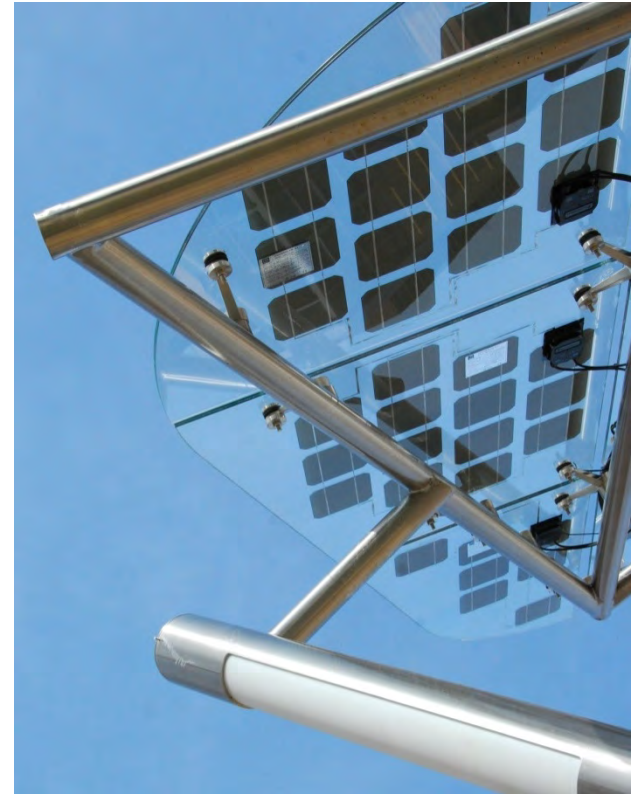
Play Area should provide activities for tots separate from older children and engage children through the use of topography and the materials of wood, stone and water to reference the site history and larger water shed.

Park Structures – Goals for Design



Structures should be: scaled appropriately, maximize transparency, complement park activity, support 18 hour use

Park Structures – Goals for Design



Structures should incorporate sustainable strategies, including stormwater management and potential alternative energy systems

SUSTAINABLE SYSTEMS

SOCIAL SUSTAINABILITY



ECOLOGICAL SUSTAINABILITY



ECONOMIC SUSTAINABILITY



THE CENTER:A

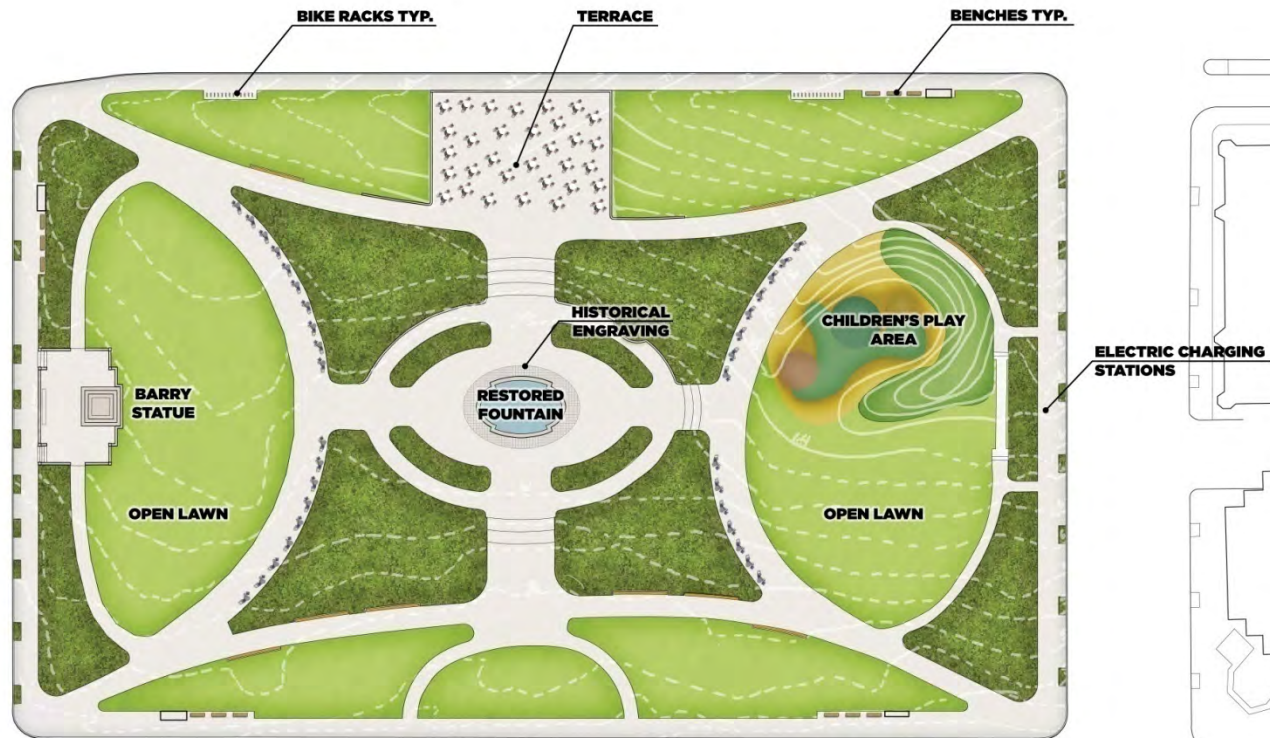
THE CENTER:B

THE EDGE

THE DIAGONAL

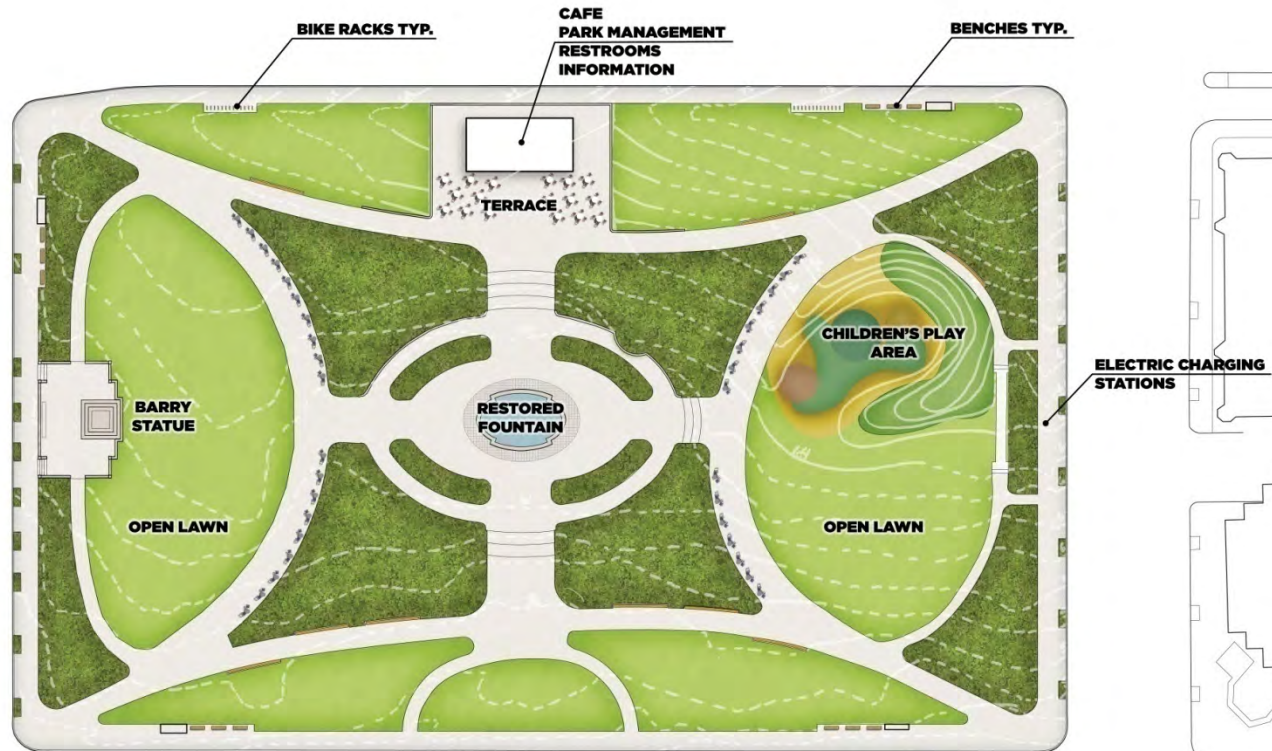
CONCEPT
ALTERNATIVES

THE CENTER



OLIN + ZGF





OLIN + ZGF



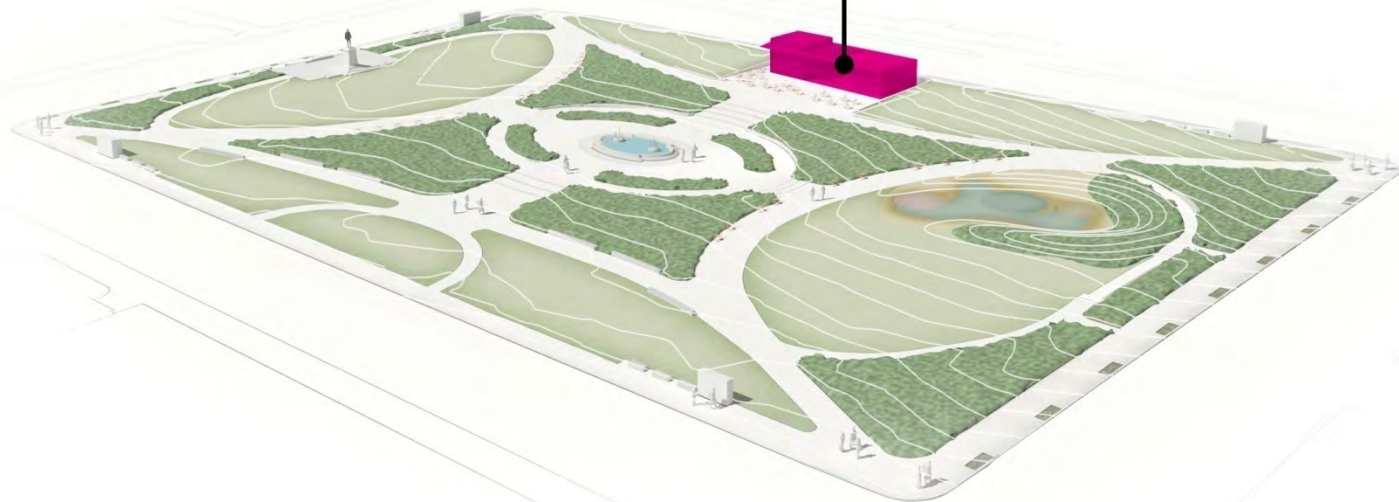
RESTORED FOUNTAIN



HISTORIC INTERPRETATION



**CAFE
PARK MANAGEMENT
RESTROOMS**



HISTORIC STATUE



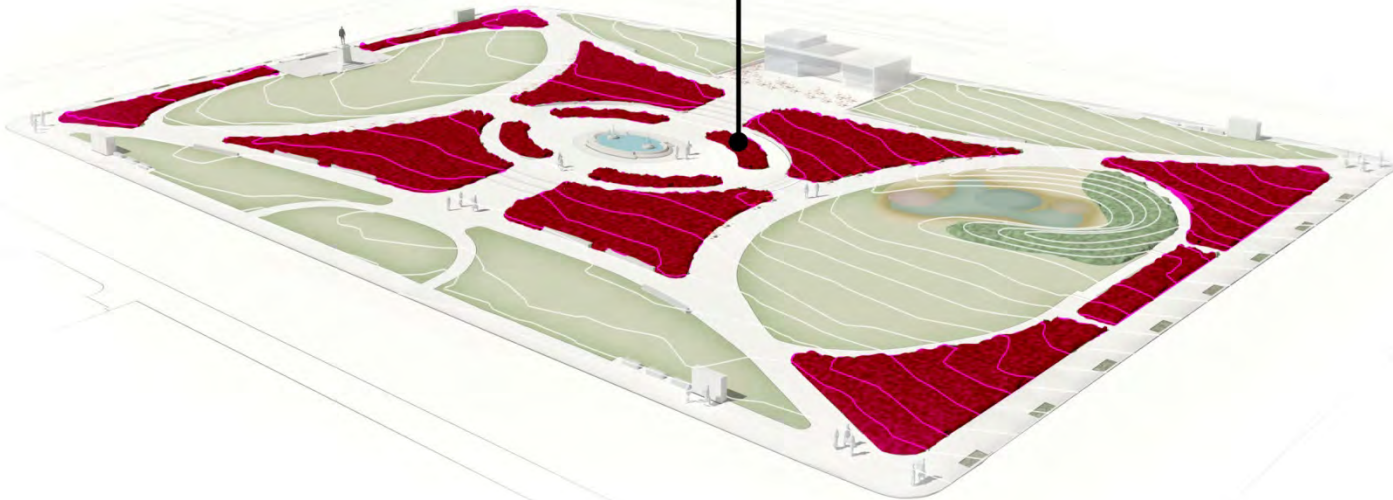
FOOD TRUCKS

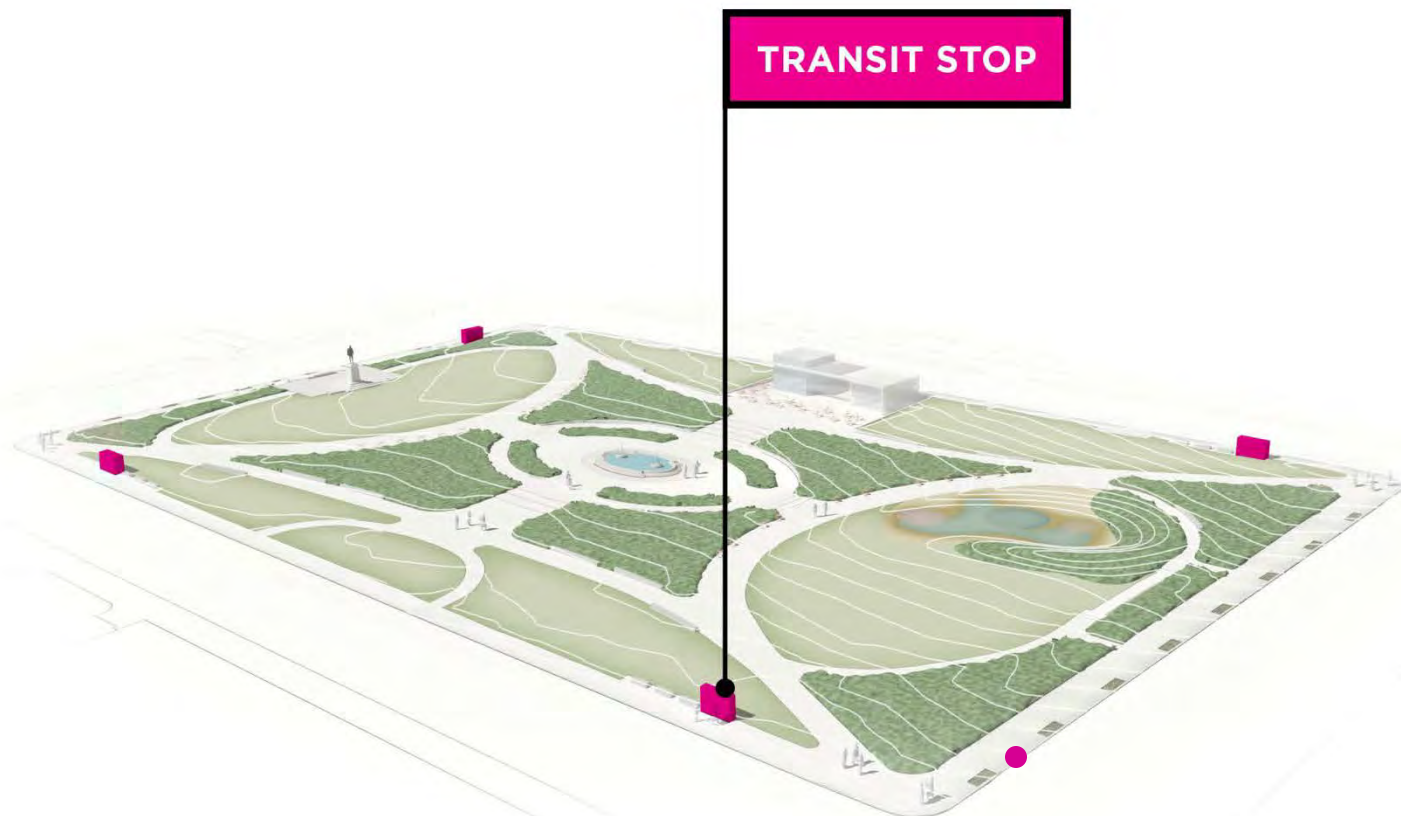


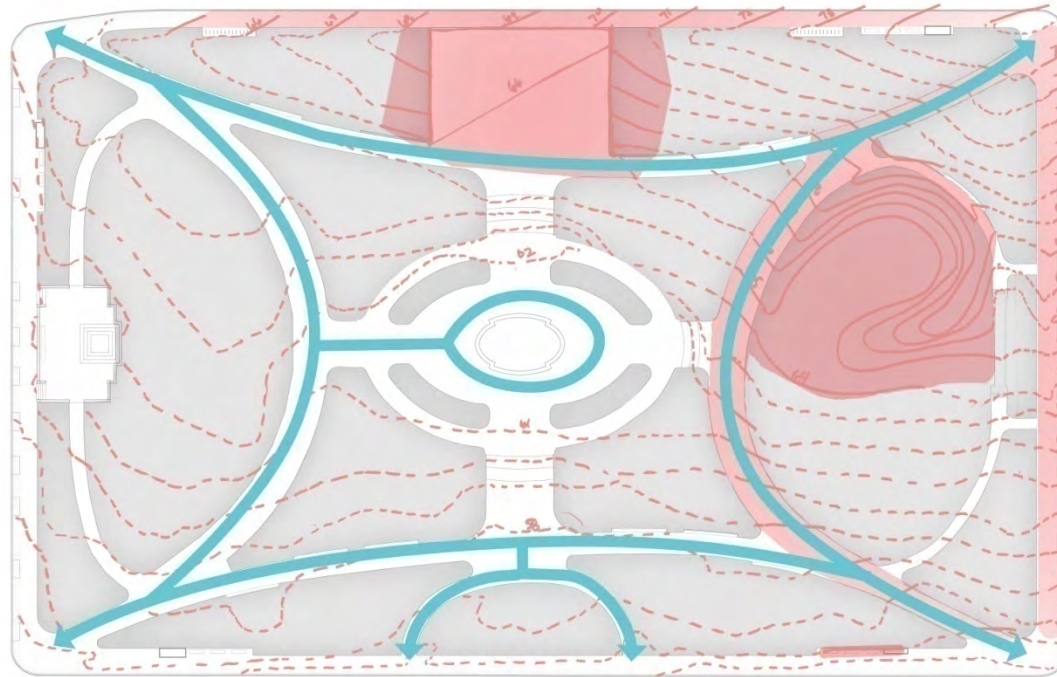
CHILDREN'S PLAY AREA



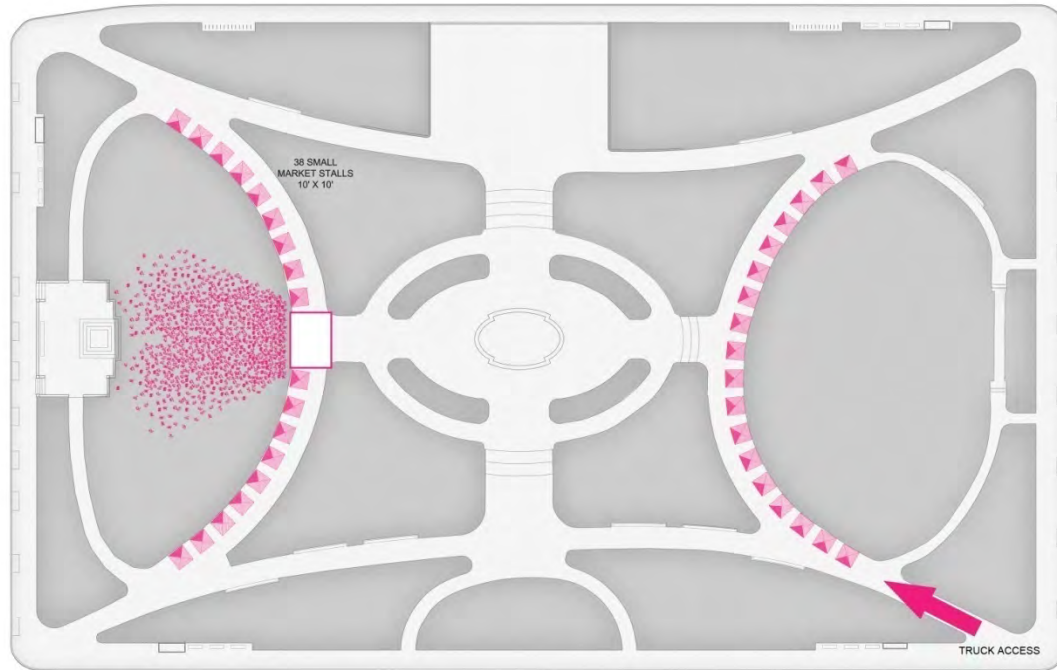
SEASONAL PLANTINGS







OLIN + ZGF

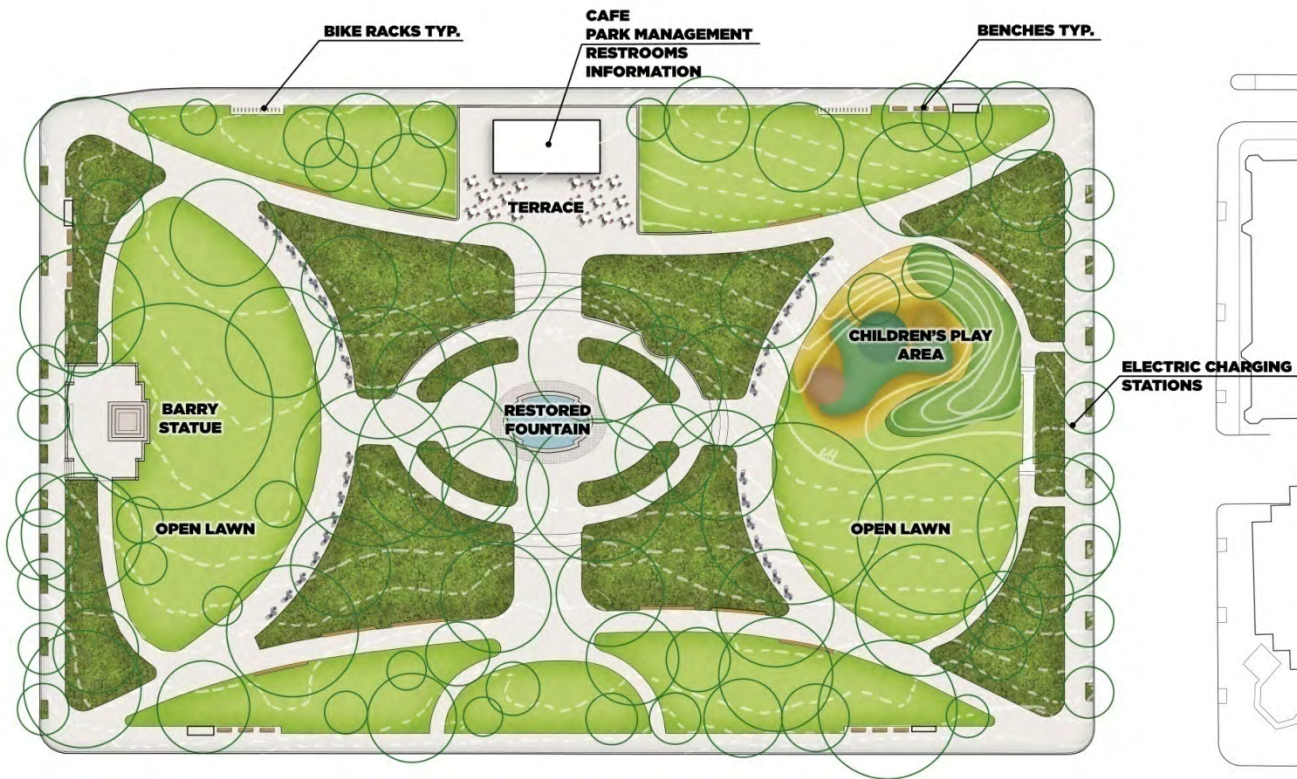


OLIN + ZGF

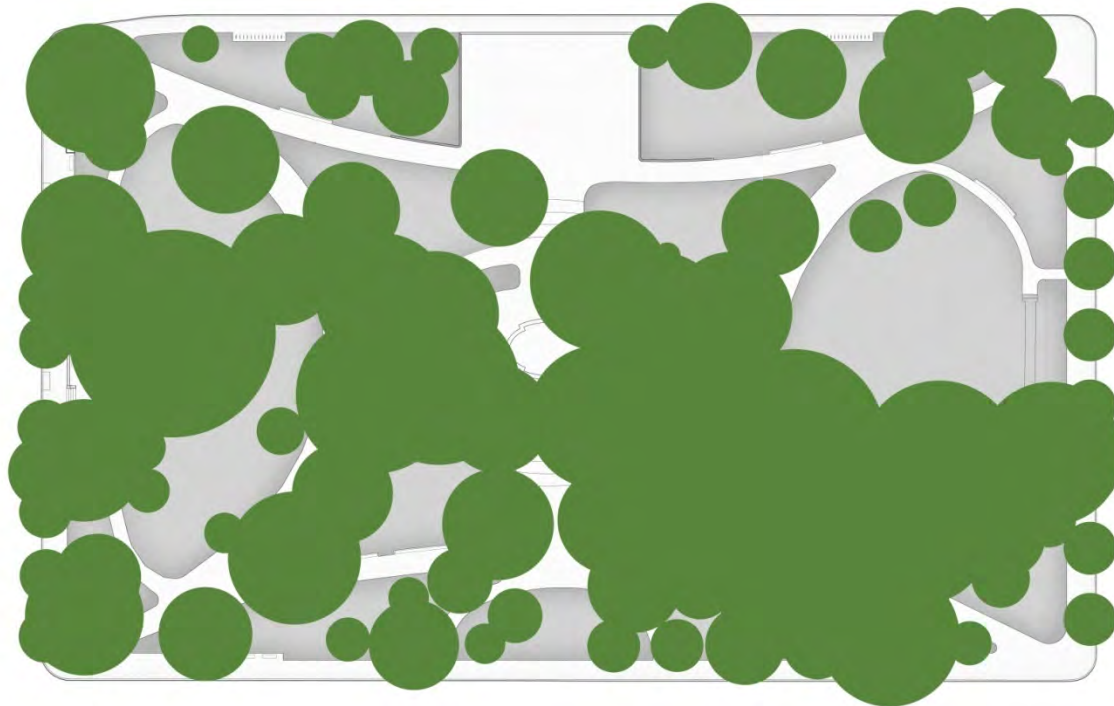


COMBINED EVENTS

36 MARKET STALLS + 750 PEOPLE FOR A PERFORMANCE



OLIN + ZGF



90%

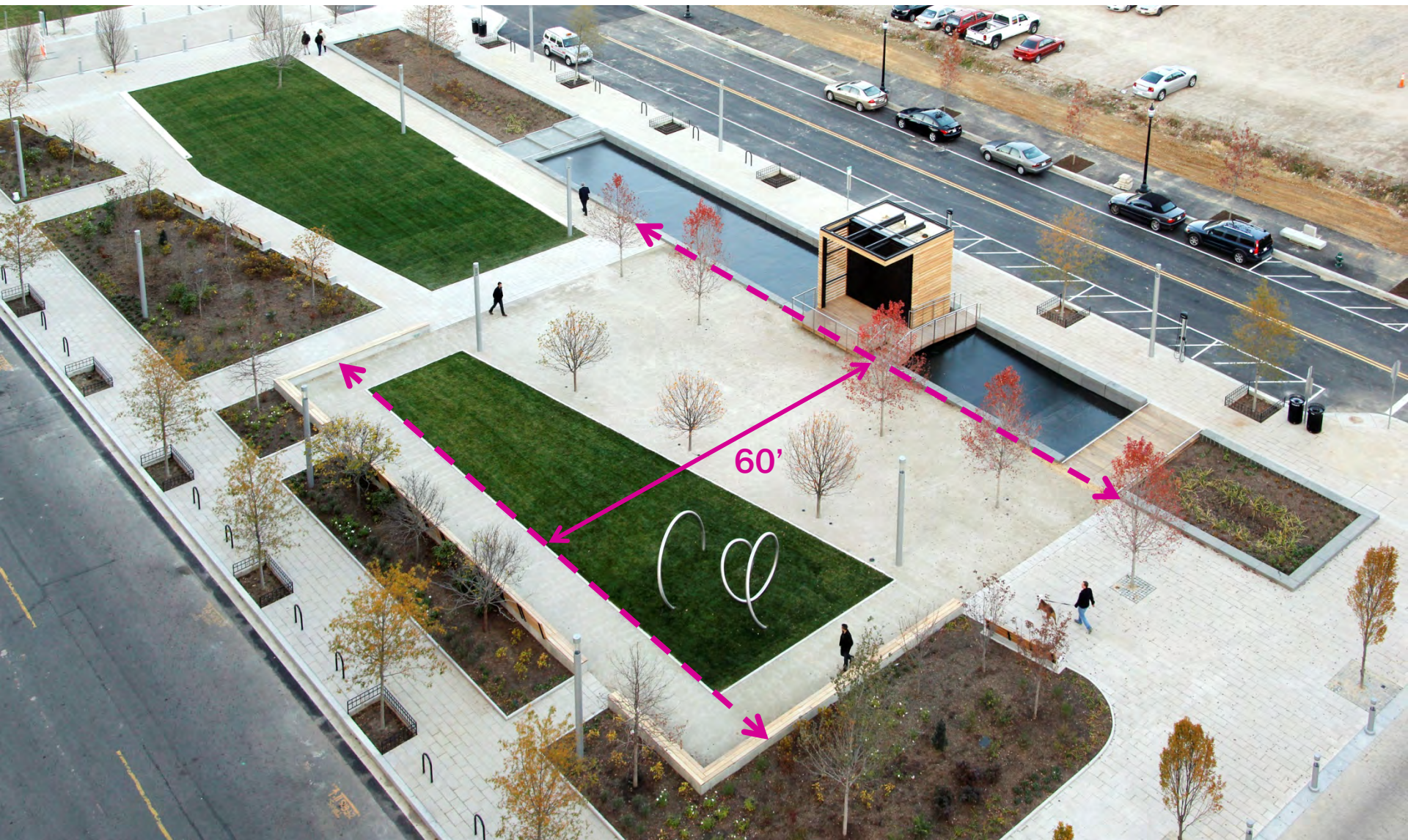
OLIN + ZGF



THE EDGE

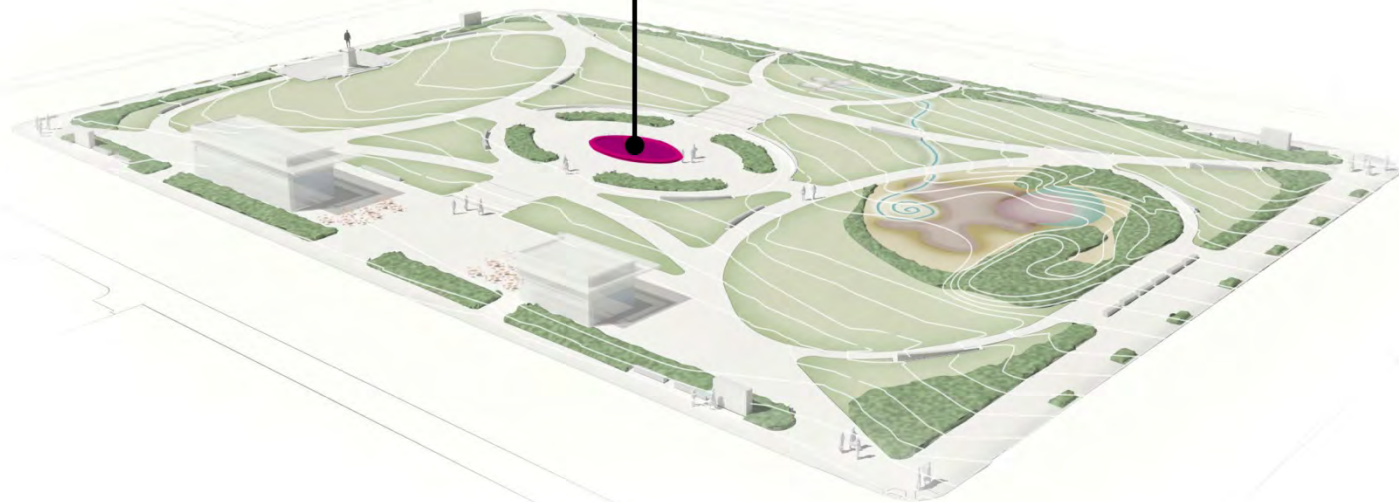


OLIN + ZGF

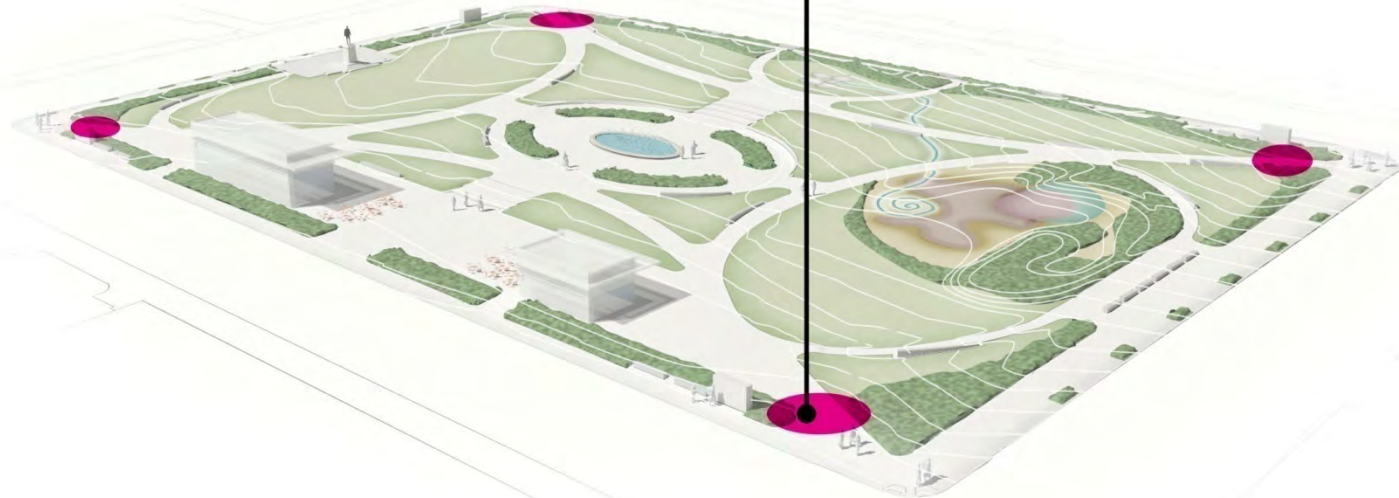




REDESIGNED INTERACTIVE FOUNTAIN

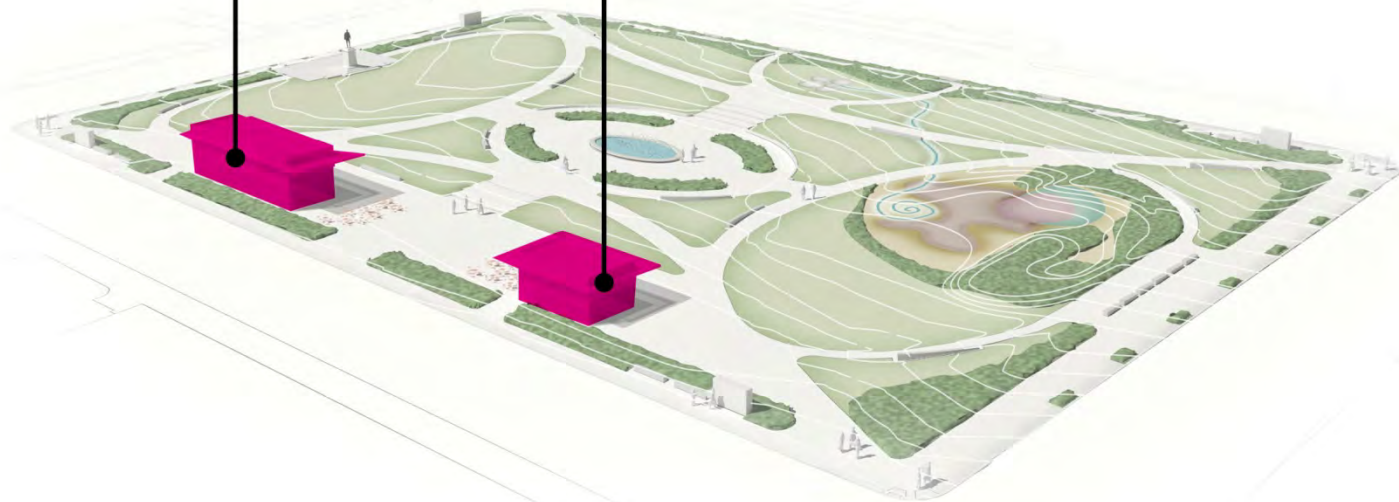


HISTORIC INTERPRETATION



**CAFE
RESTROOMS**

**PARK MANAGEMENT
INFORMATION**



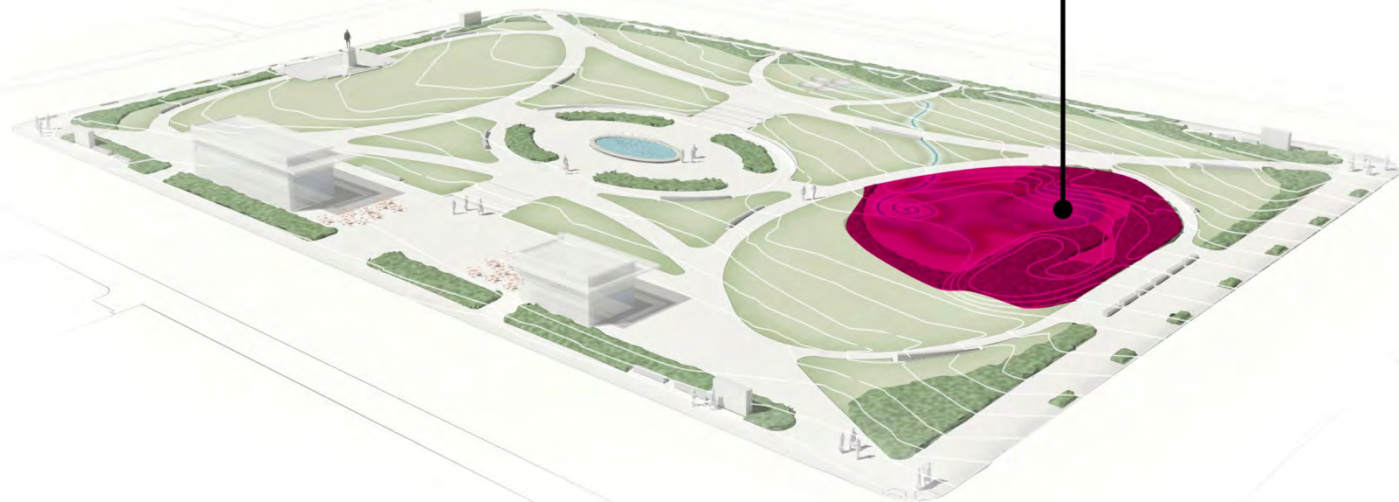
HISTORIC STATUE



FOOD TRUCKS



CHILDREN'S PLAY AREA



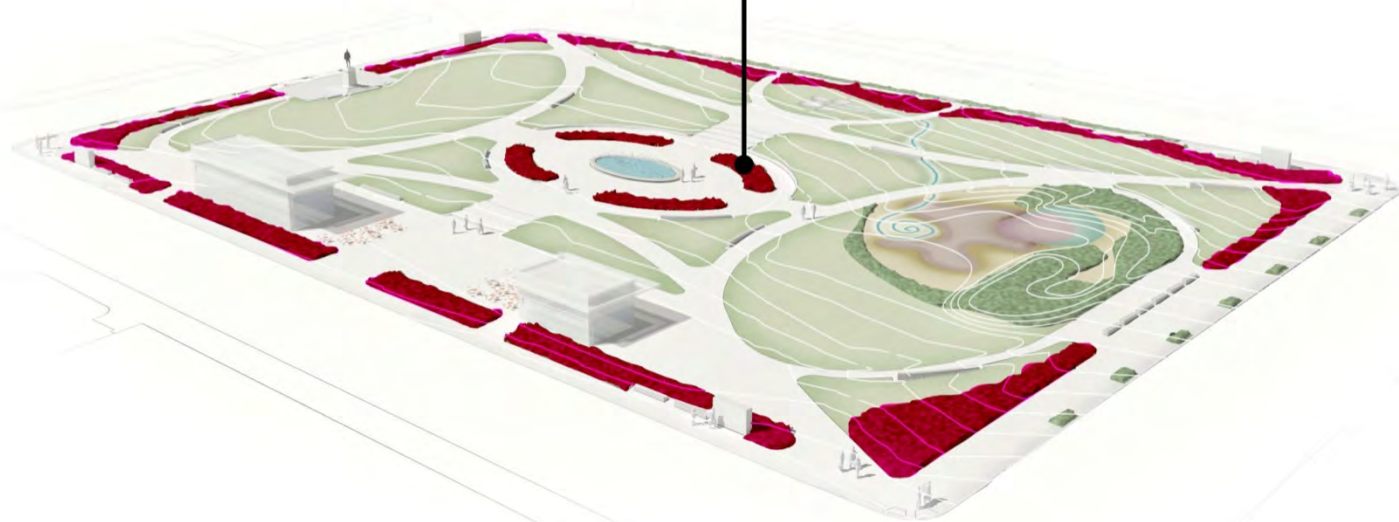
RILL WATER FEATURE

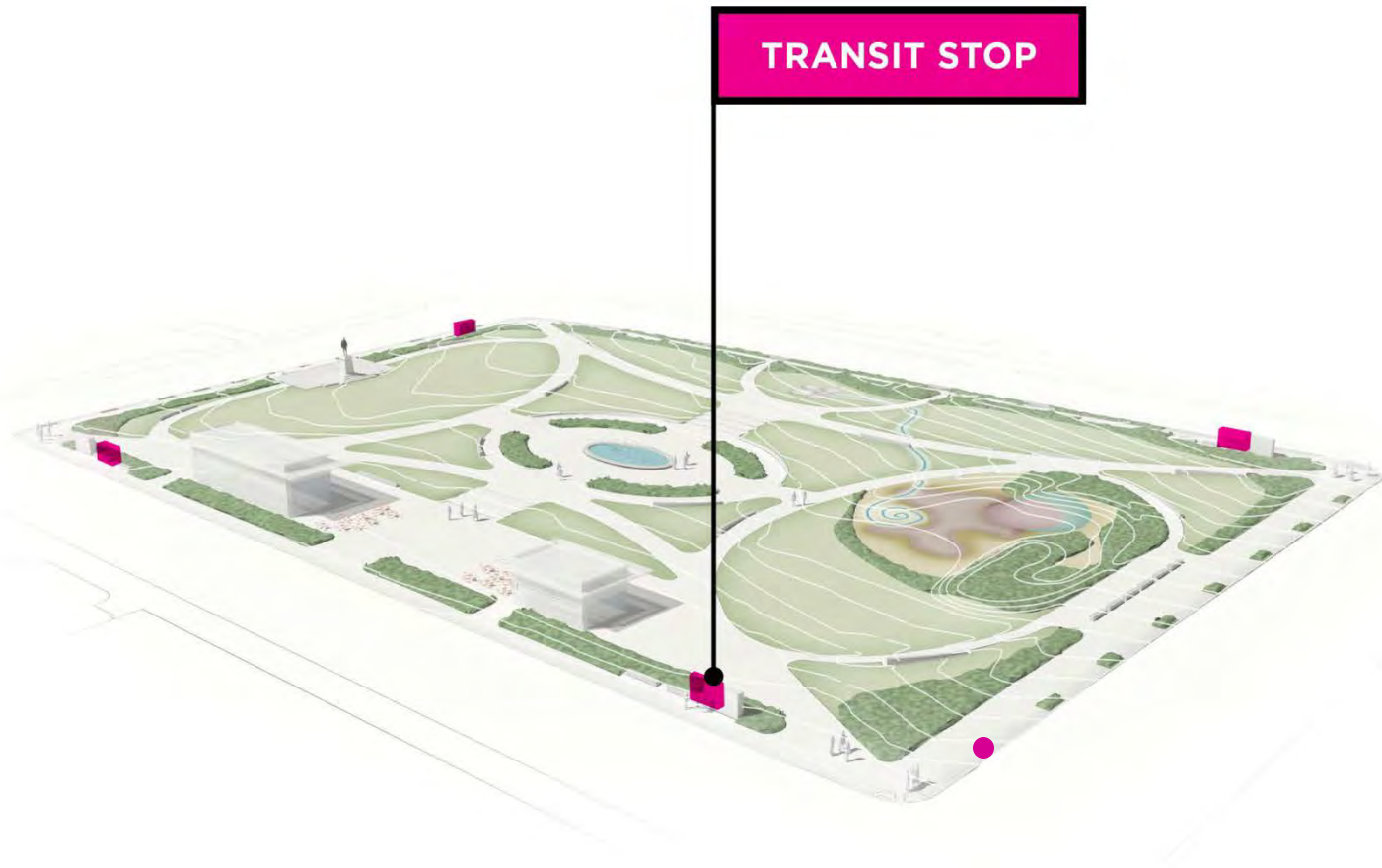


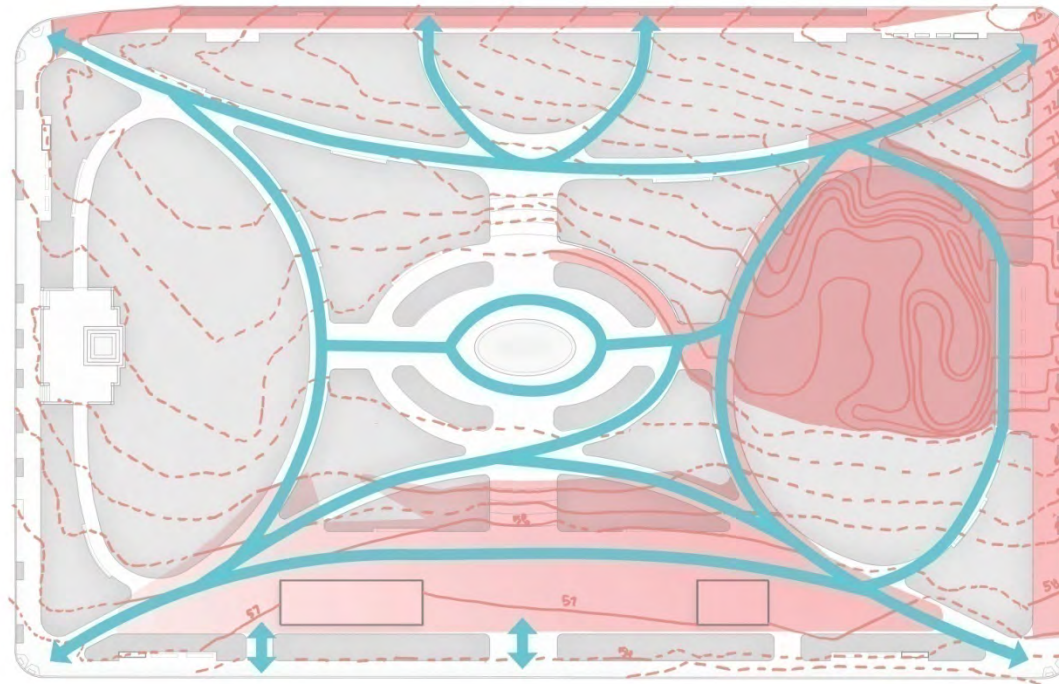
Water Rill



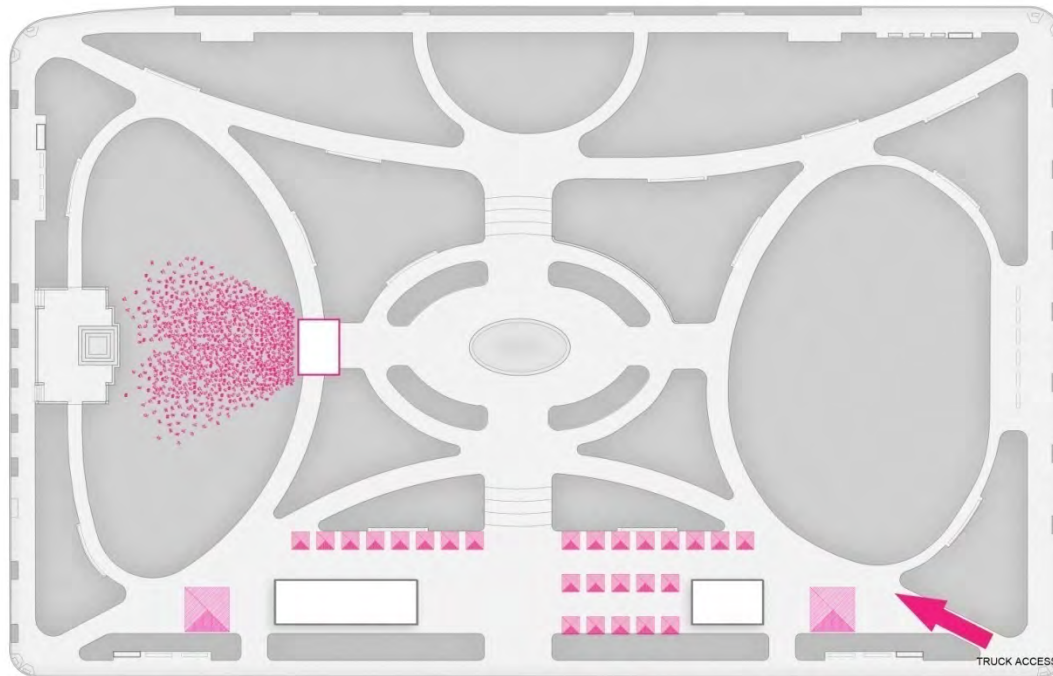
SEASONAL PLANTINGS







OLIN + ZGF

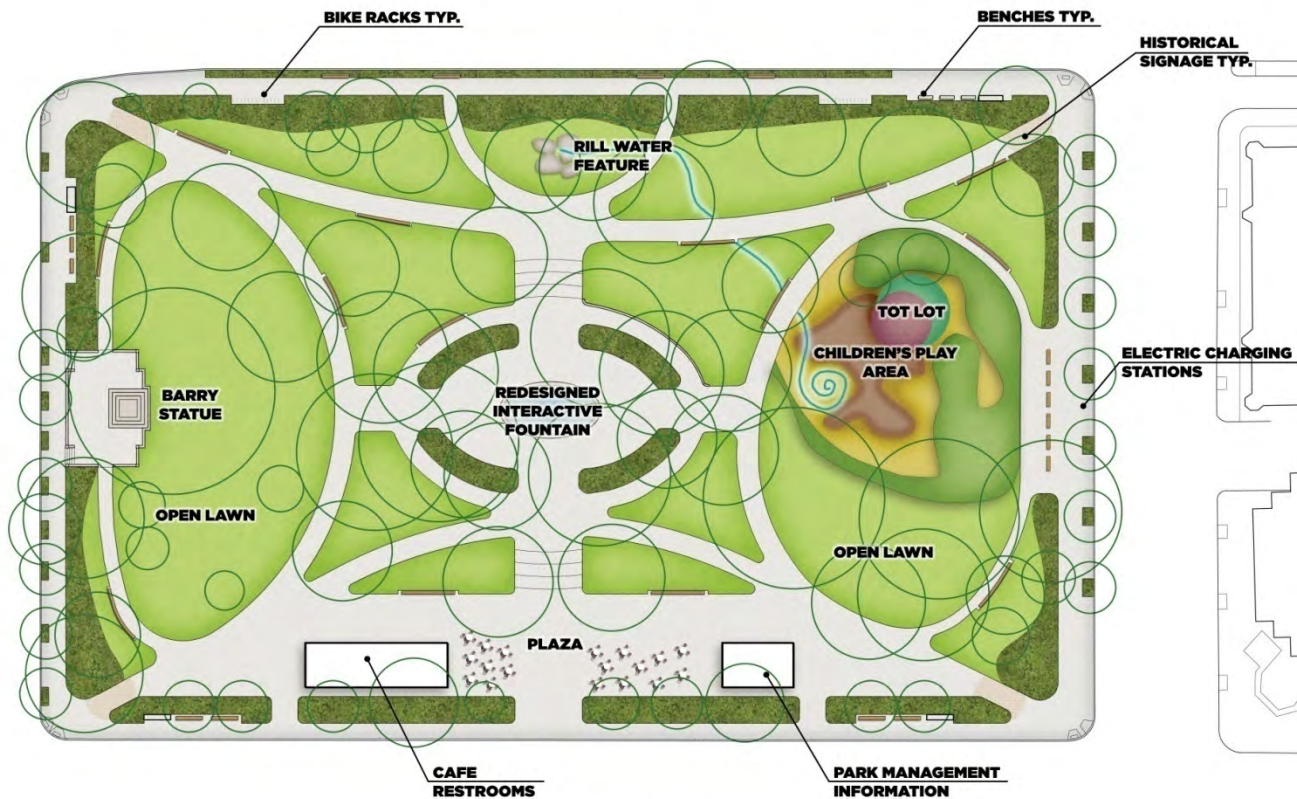


OLIN + ZGF

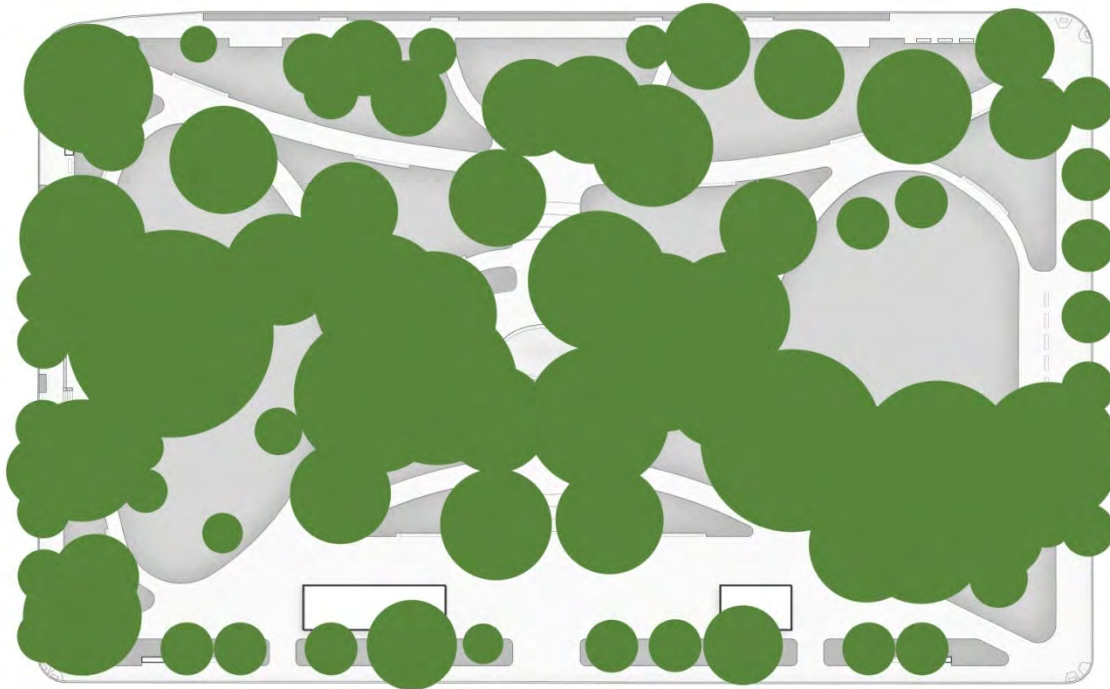


COMBINED EVENTS

26 MARKET STALLS + 2 LARGE TENTS + 750 PEOPLE FOR A PERFORMANCE



OLIN + ZGF

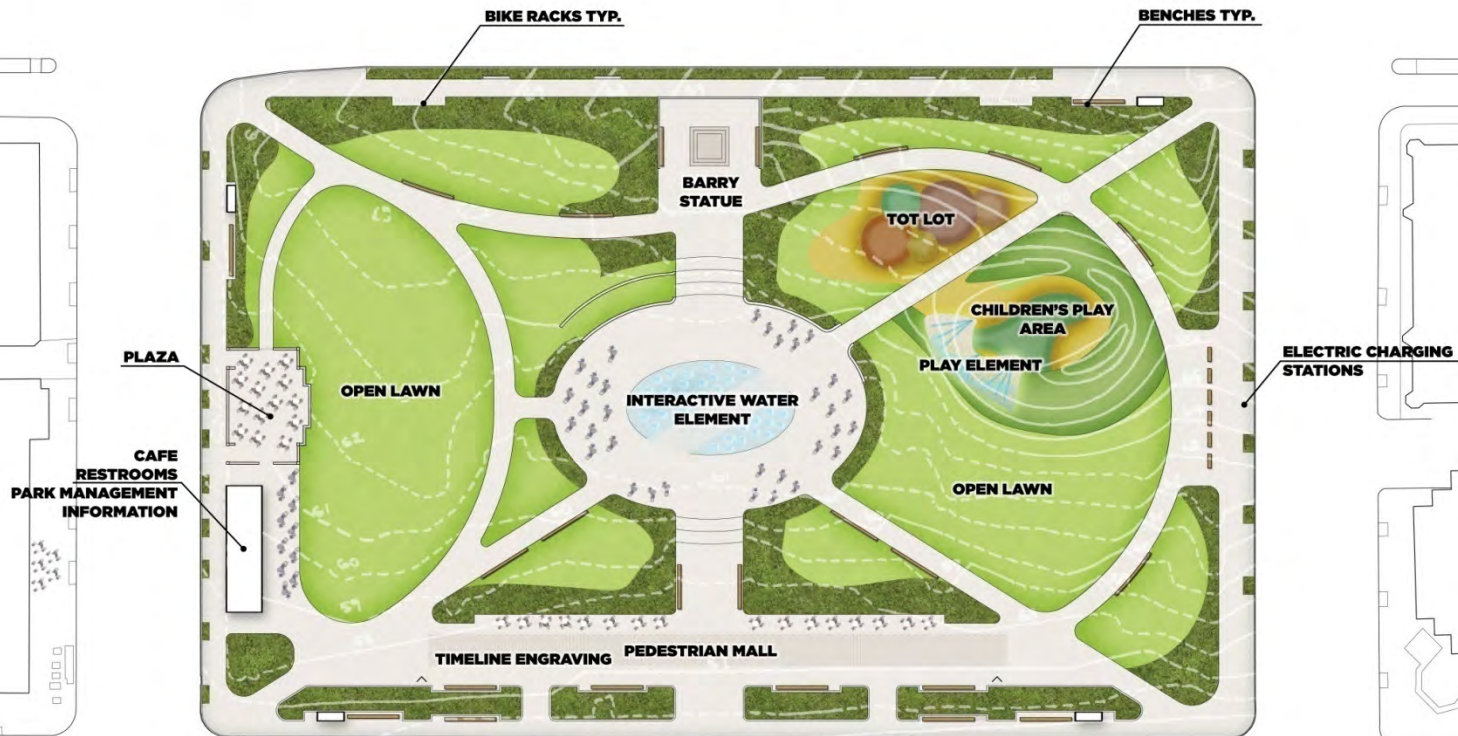


77%

OLIN + ZGF



THE DIAGONAL

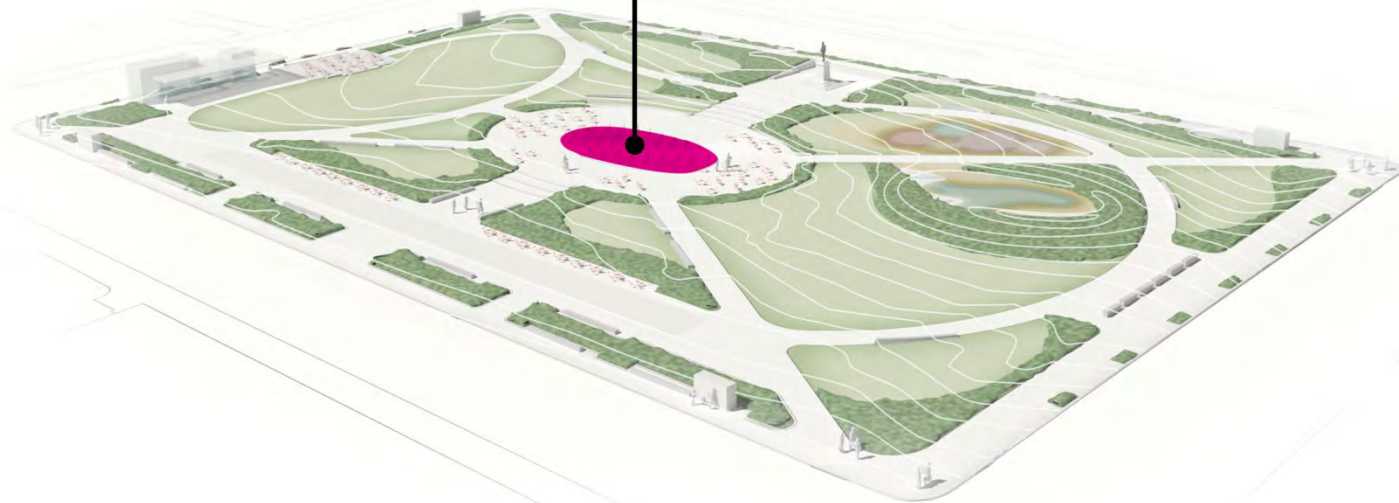


OLIN + ZGF

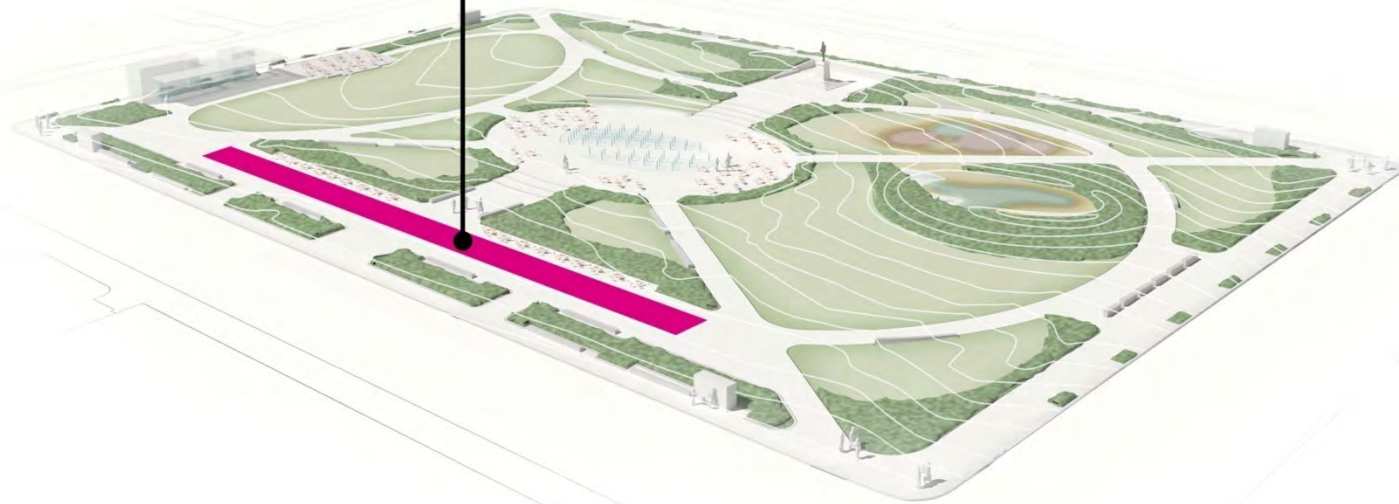




INTERACTIVE WATER ELEMENT



TIMELINE ENGRAVING



Timeline Engraving



Time Tree – Iidabashi Plano (Japan)



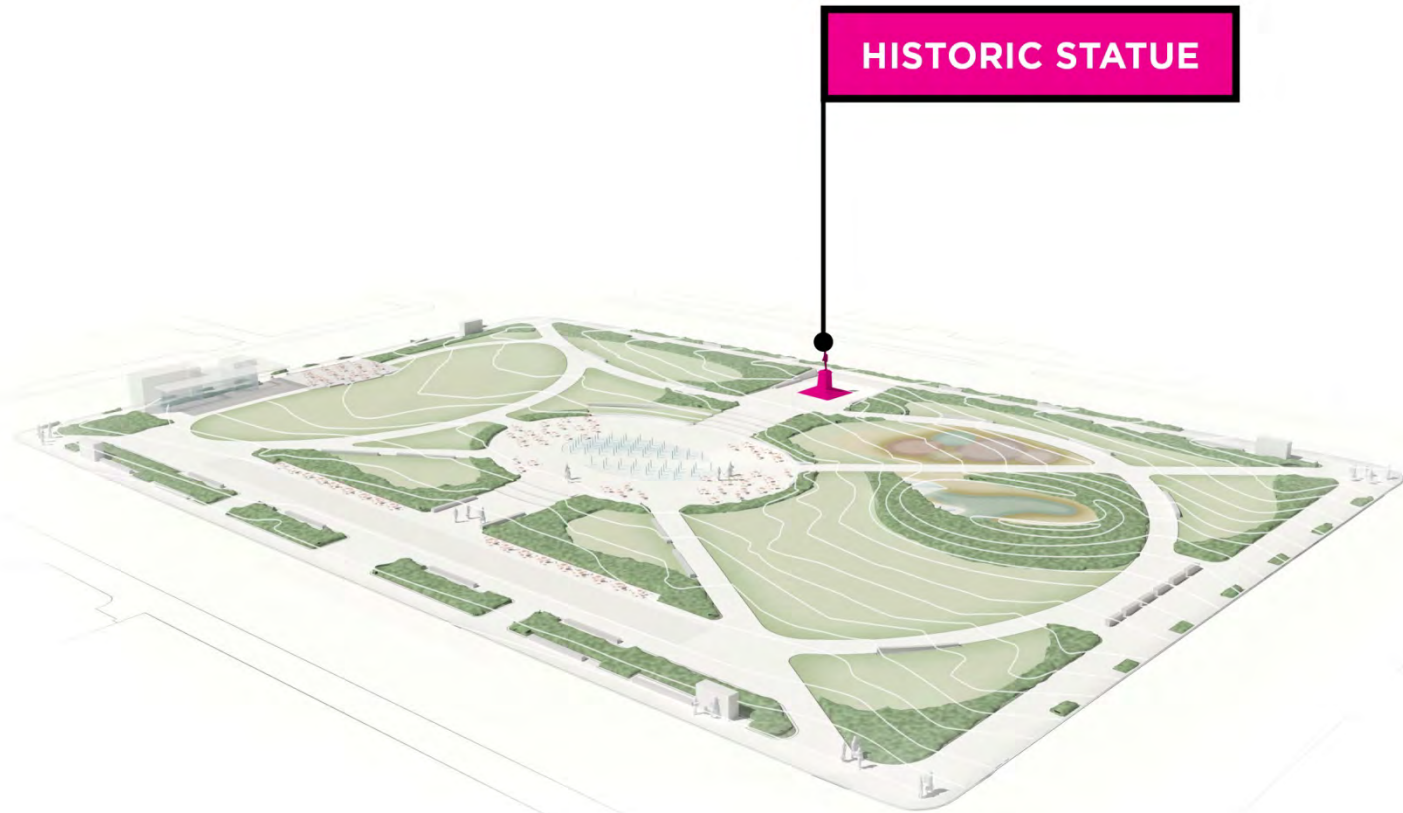
Hamilton Northshore Parkland - Australia



Walk of Art – Yorkshire Sculpture Park

**CAFE
RESTROOMS
PARK MANAGEMENT
INFORMATION**

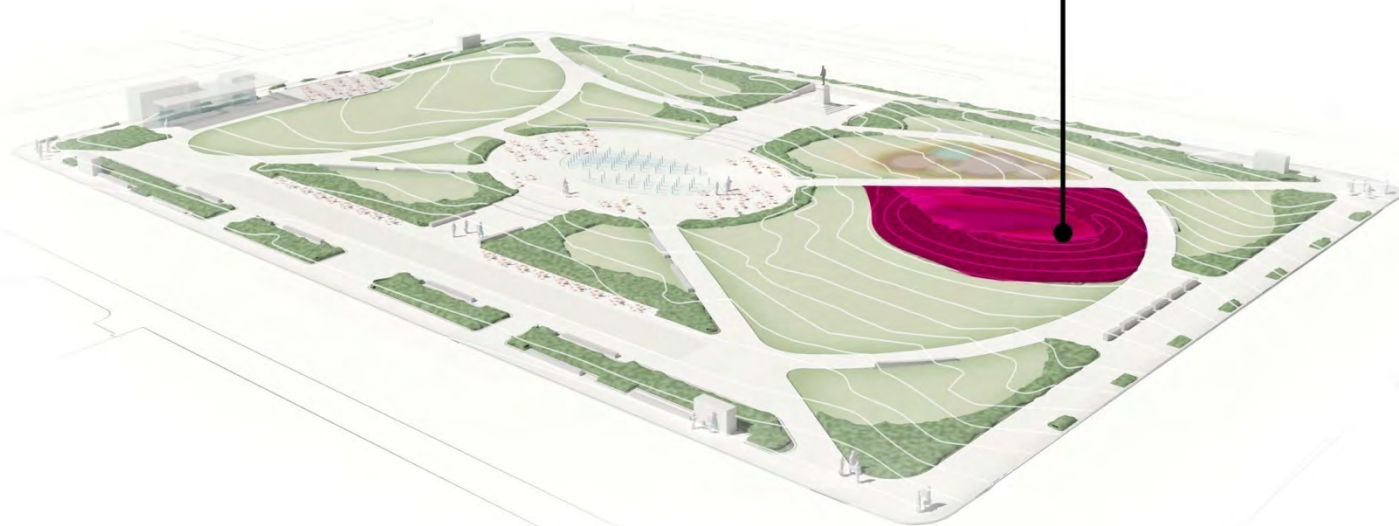


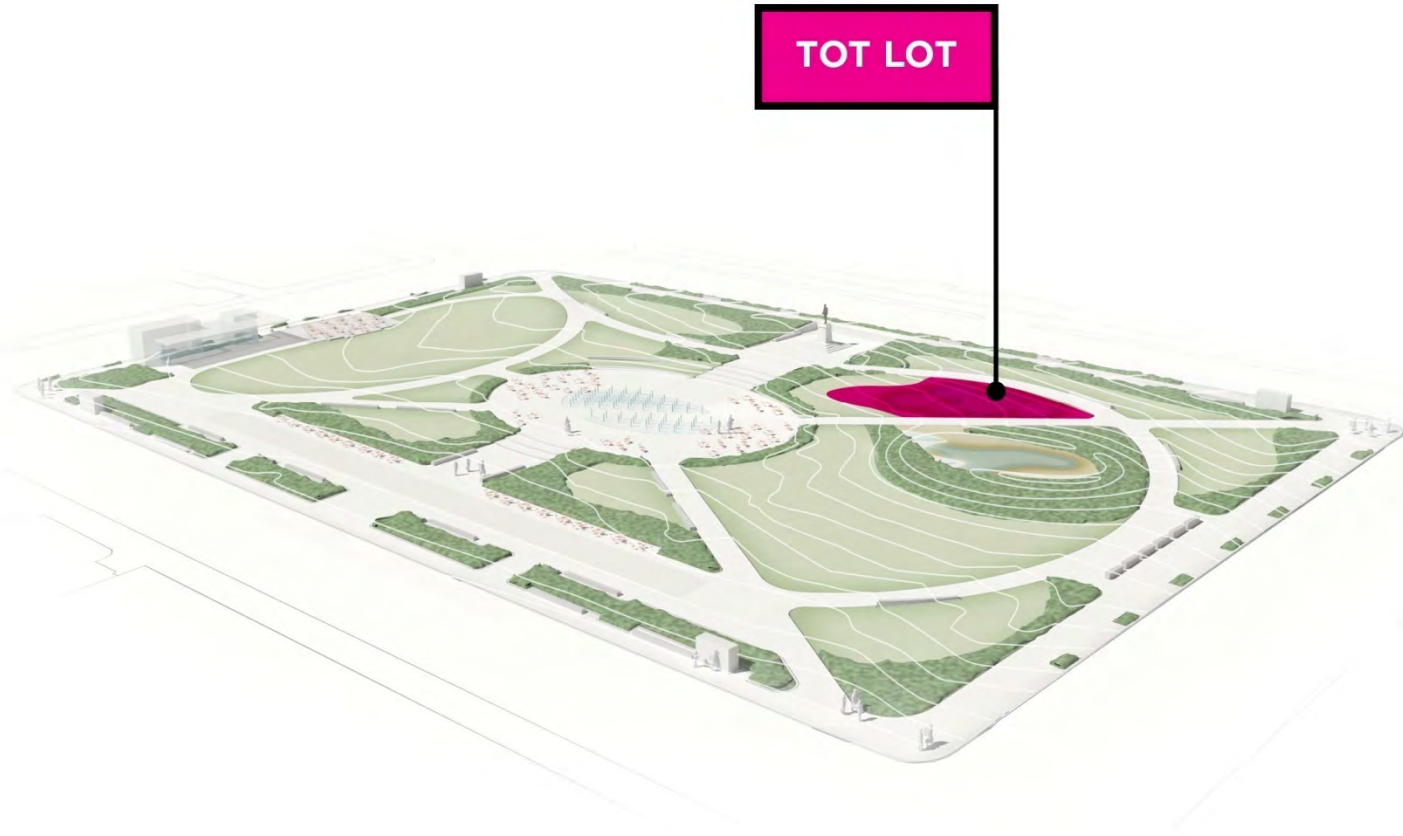


FOOD TRUCKS

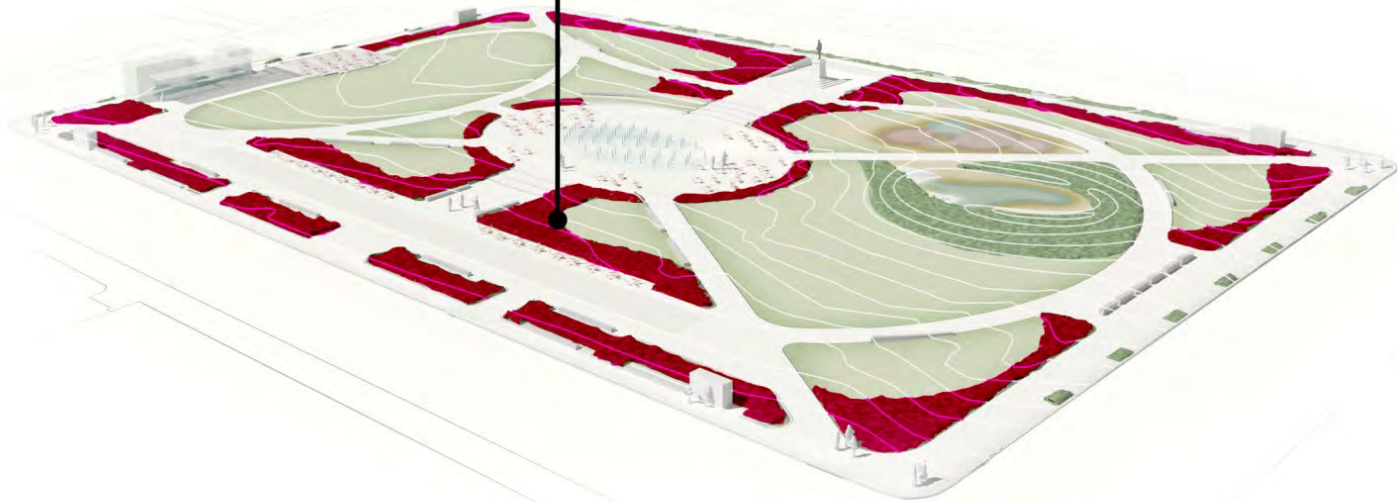


CHILDREN'S PLAY AREA

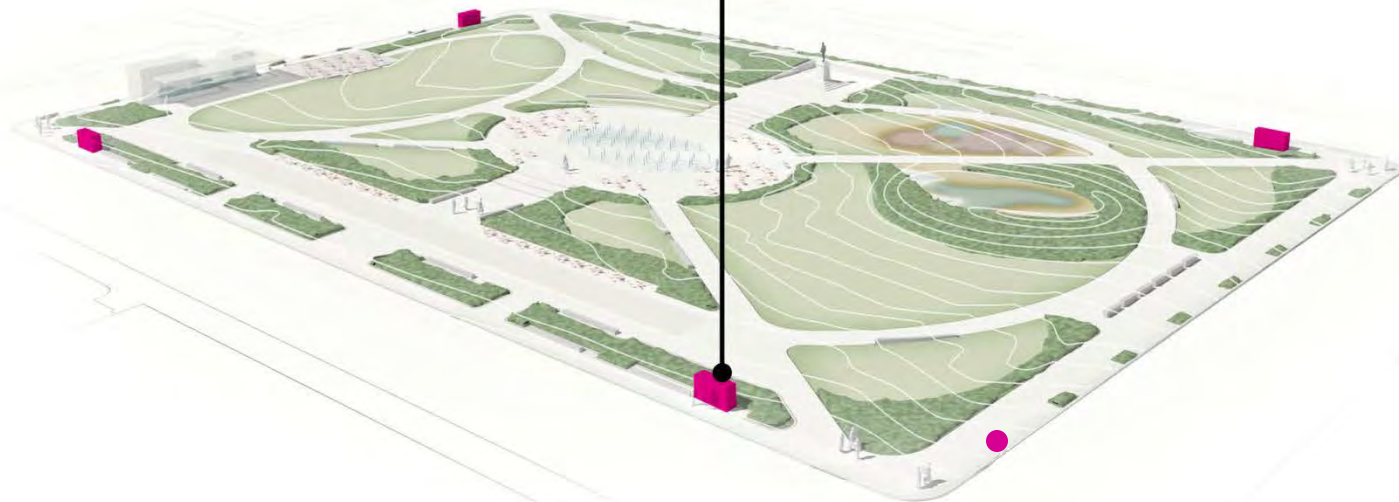


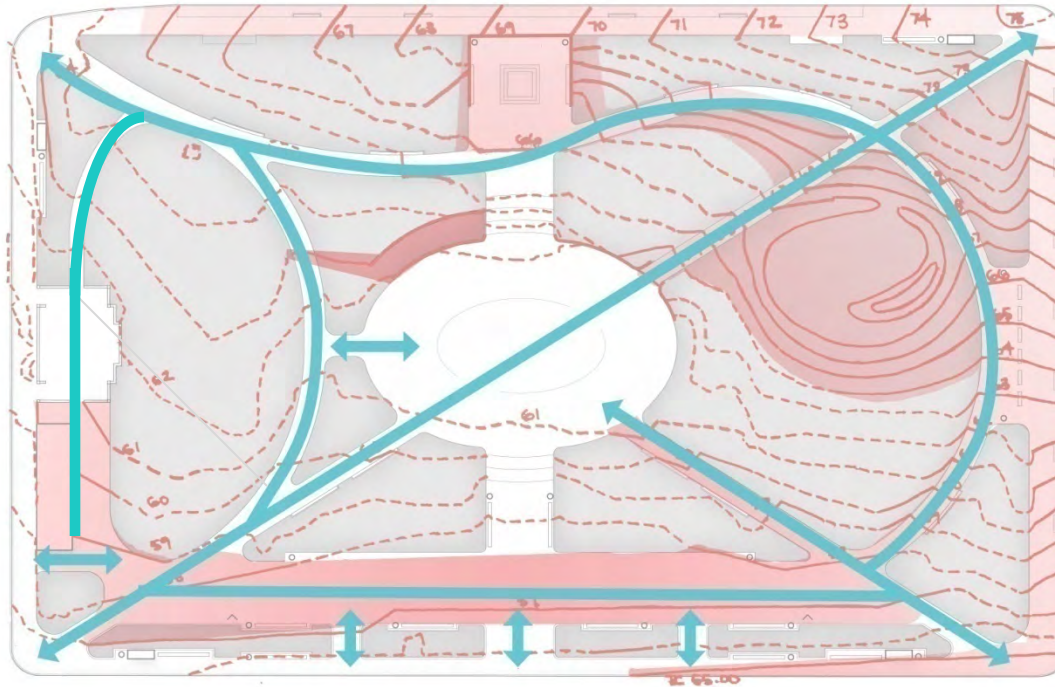


SEASONAL PLANTINGS

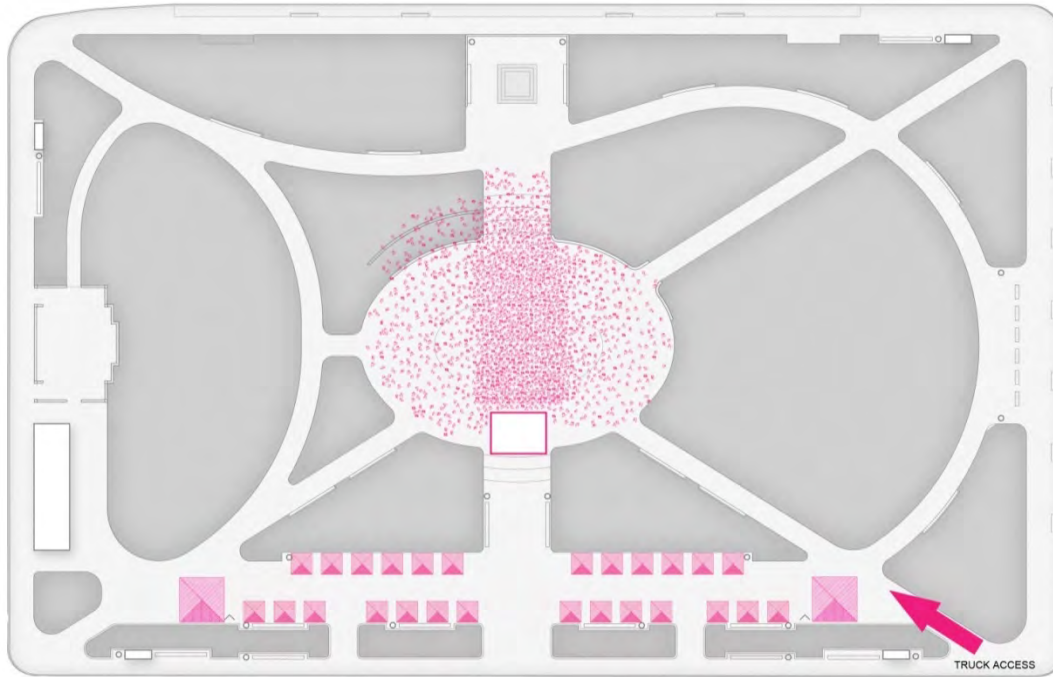


TRANSIT STOP





OLIN + ZGF

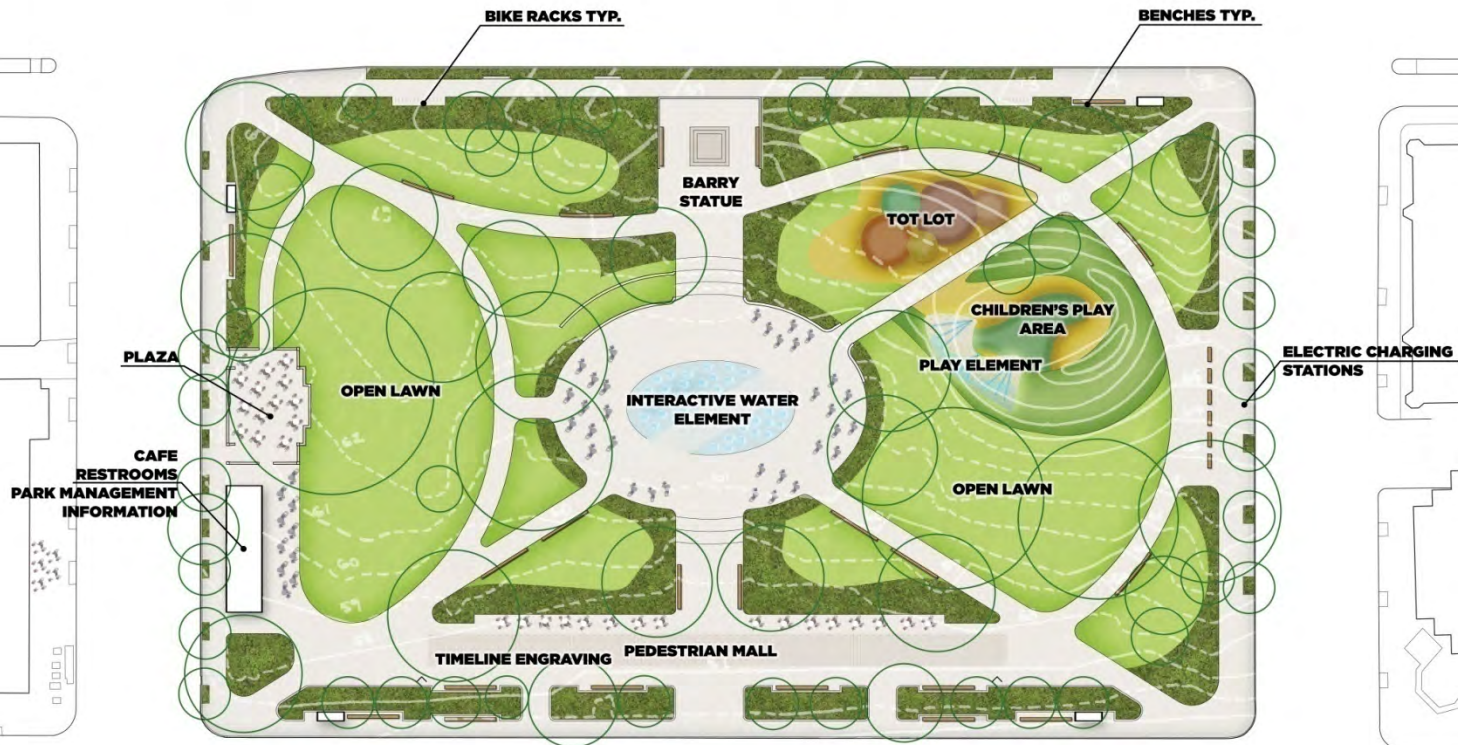


OLIN + ZGF

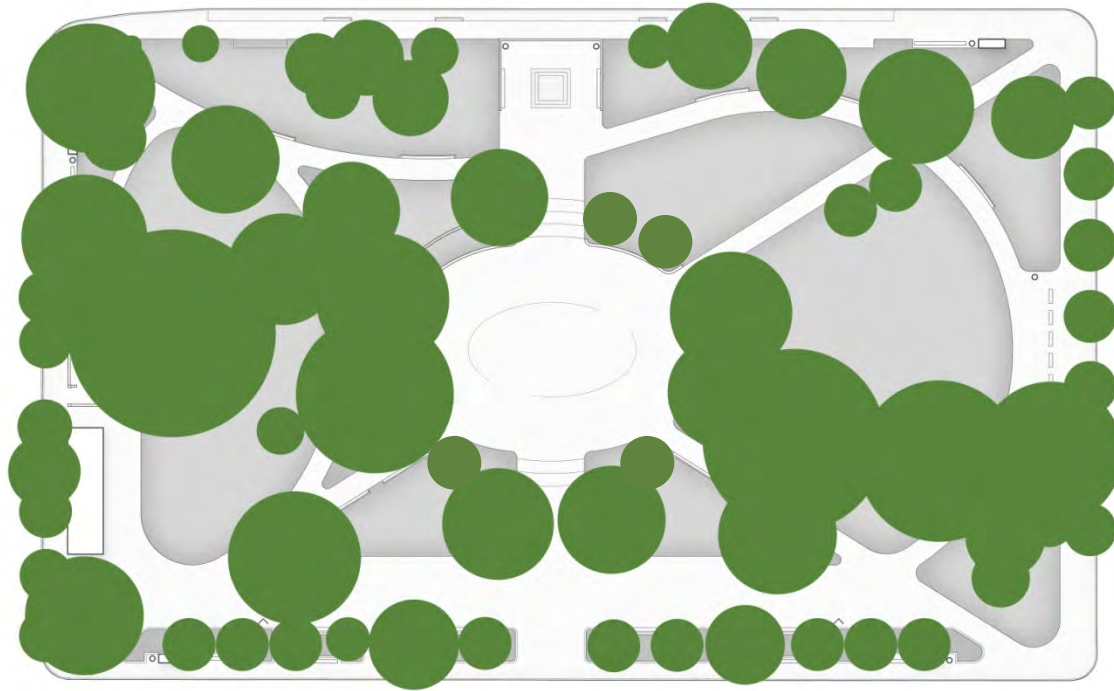


COMBINED EVENTS

26 MARKET STALLS + 2 LARGE TENTS + 1500 PEOPLE FOR A PERFORMANCE



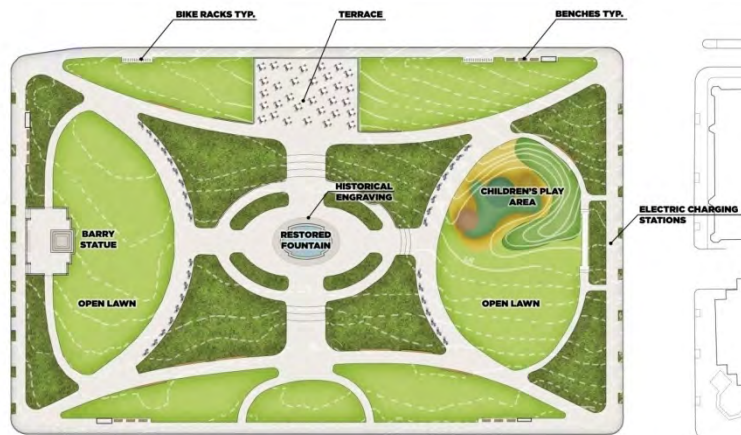
OLIN + ZGF



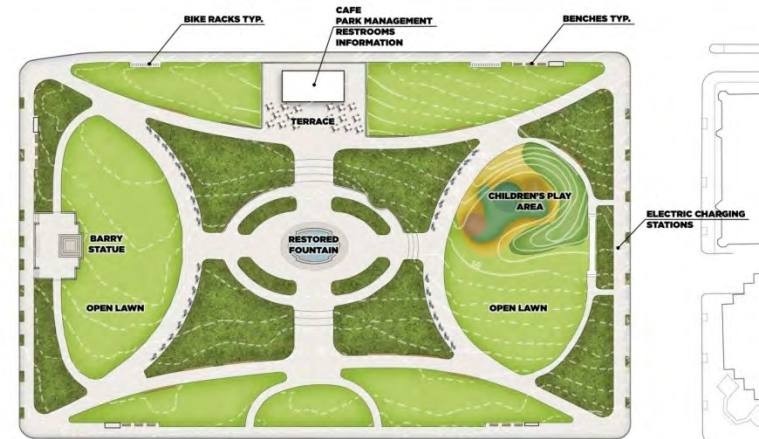
49%

OLIN + ZGF





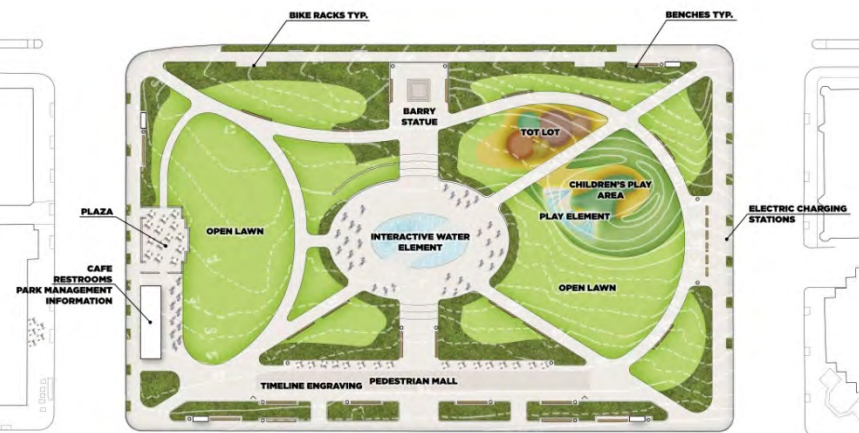
THE CENTER: A



THE CENTER: B



THE EDGE



THE DIAGONAL



FRANKLIN PARK

VISION AND TRANSFORMATION PLAN