



Peace Corps Commemorative Environmental Assessment

Public Scoping Meeting

October 23, 2014

6:30 p.m.

Agenda

Welcome

- Glenn DeMarr, National Park Service, National Capital Region

Project Background

- Roger Lewis, Peace Corps Commemorative Foundation (PCCF)

NEPA and Section 106 Process and Issues

- Claire Sale, AECOM

Project Description

- Roger Lewis, PCCF

Opportunity for Public Comment

Agenda

Welcome and Purpose of Meeting

**Glenn DeMarr, National Park Service, National
Capital Region**

Purpose of Meeting

- **Receive input from public regarding site selection**
- **Present project background**
- **Discuss environmental and historic preservation process**
 - **Two scoping efforts (site selection and design)**
 - **Environmental impacts**
 - **Historic resources effects**
 - **Opportunities for public comment**
- **Present site location alternatives**

Agenda

Project Background

Roger Lewis, Peace Corps Commemorative Foundation (PCCF)

Project Background

- In addition to providing volunteer assistance around the world, the fundamental ideals and values of the Peace Corps embody and reflect those of the United States
- In January 2014, legislation authorized PCCF to establish a commemorative work on federal land in Washington, DC
- PCCF developed 10 site selection goals and initially identified approximately 25 potential sites; these were narrowed to four
- PCCF will sponsor a national design competition for the memorial
- Design will be reviewed and approved by NPS, NCPC, CFA and other relevant agencies

Site Location Map



Agenda

NEPA and Section 106 Process and Issues

Claire Sale, AECOM

Project Sponsor

**Peace Corps
Commemorative
Foundation**

Agencies



Purpose and Need

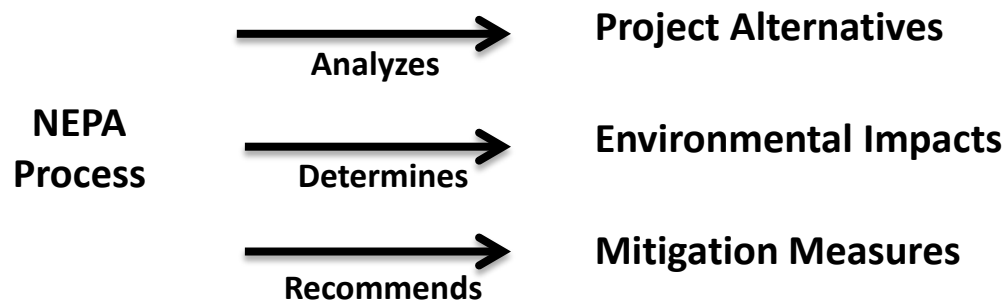
- **Purpose of the Commemorative**
 - **To commemorate the enduring historic significance of the Peace Corps' 1961 founding, and the fundamental American ideals and values that the Peace Corps' historic founding and Peace Corps service embody**

What is NEPA?

National Environmental Policy Act of 1969

(NEPA; Public Law 91-190; 42 U.S.C. 4321 *et seq*)

- Established a national policy for **protecting the environment** and requires evaluation of alternative actions
- Goal: To ensure **informed decision-making**
- Can conclude with an EA and Finding of No Significant Impact (FONSI) or an EIS and Record of Decision (ROD)

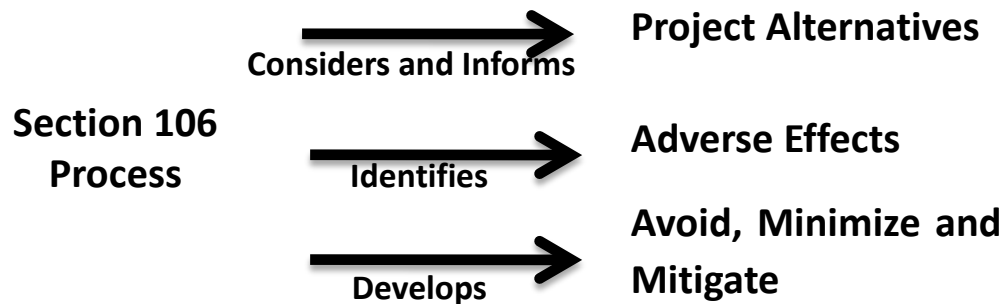


What is Section 106?

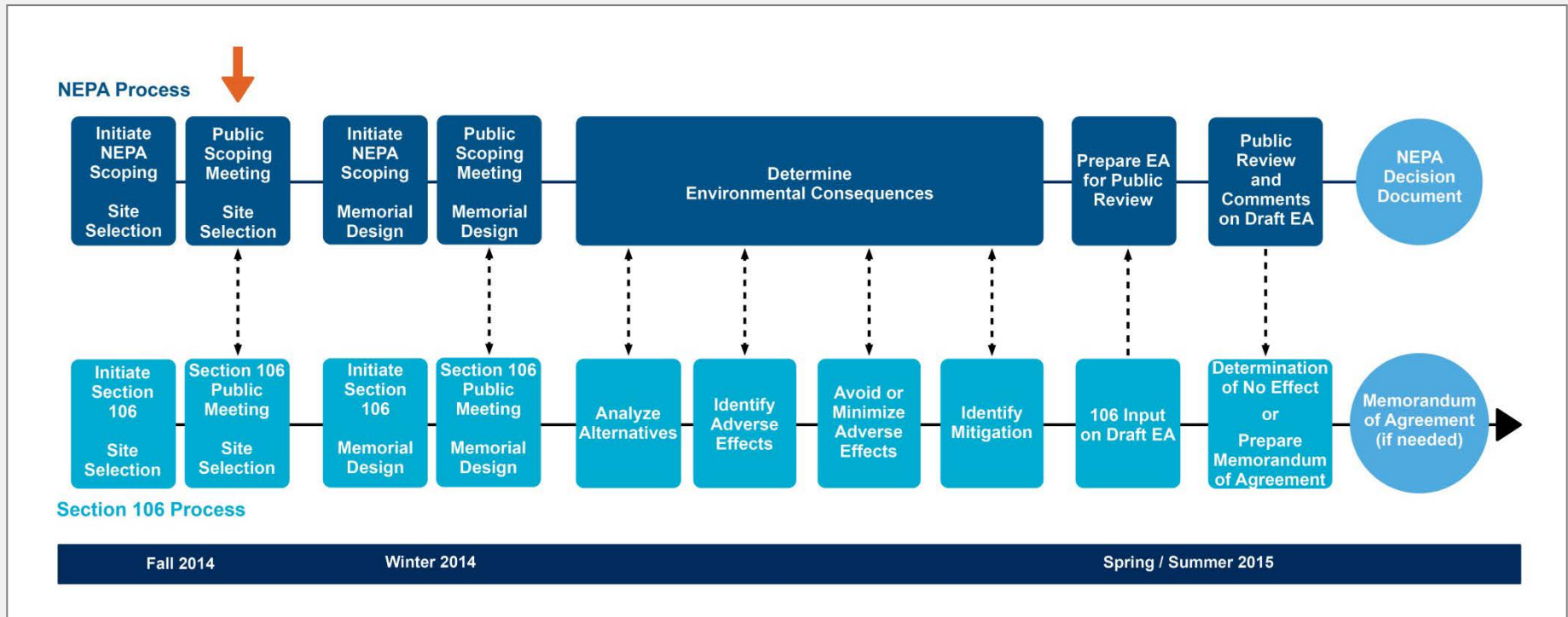
Component of National Historic Preservation Act of 1966

(NHPA; Public Law 89-665; 16 U.S.C. 470 *et seq.*)

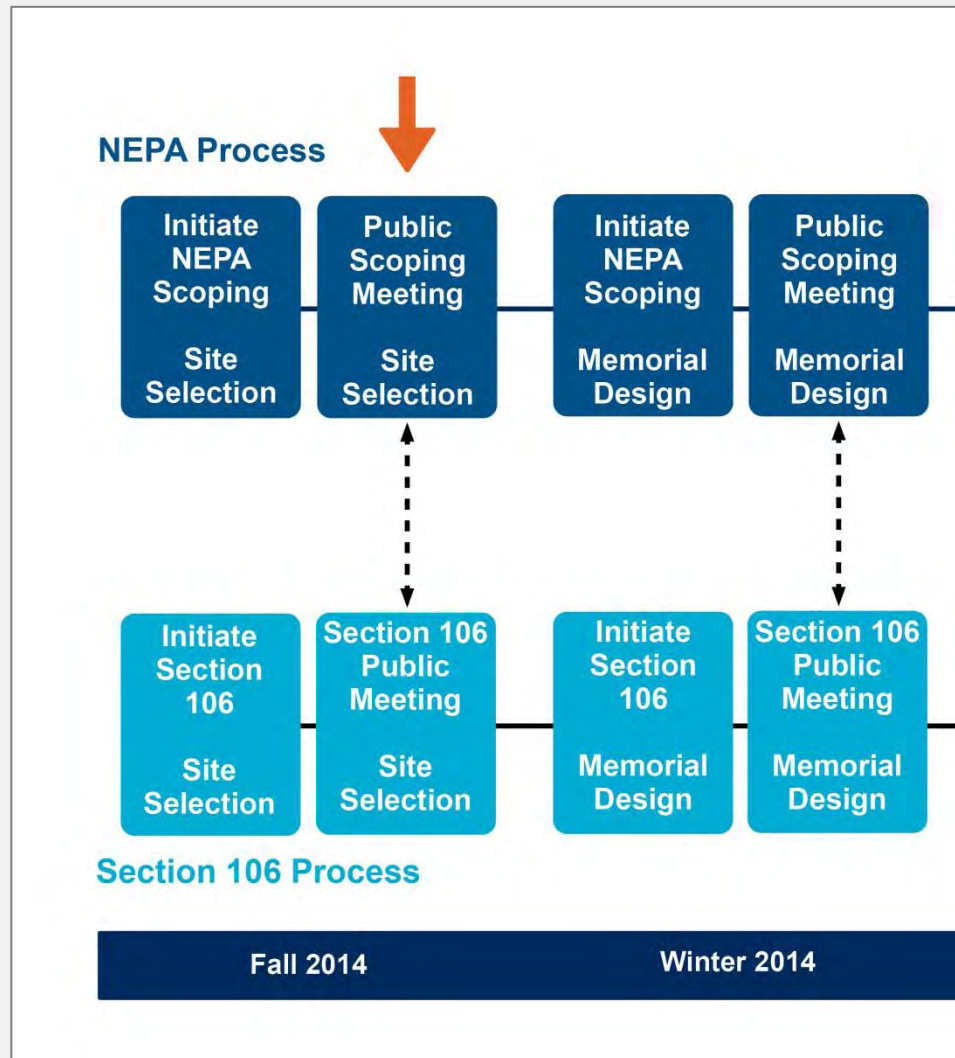
- Established a process to **protect resources** listed on, or eligible for listing on, the National Register of Historic Places, and requires the consideration of alternatives if effects on historic resources are anticipated
- Goal: To **minimize potential harm** and damage to historic properties
- Can conclude in a Determination of No Adverse Effect or a Memorandum of Agreement with Consulting Parties



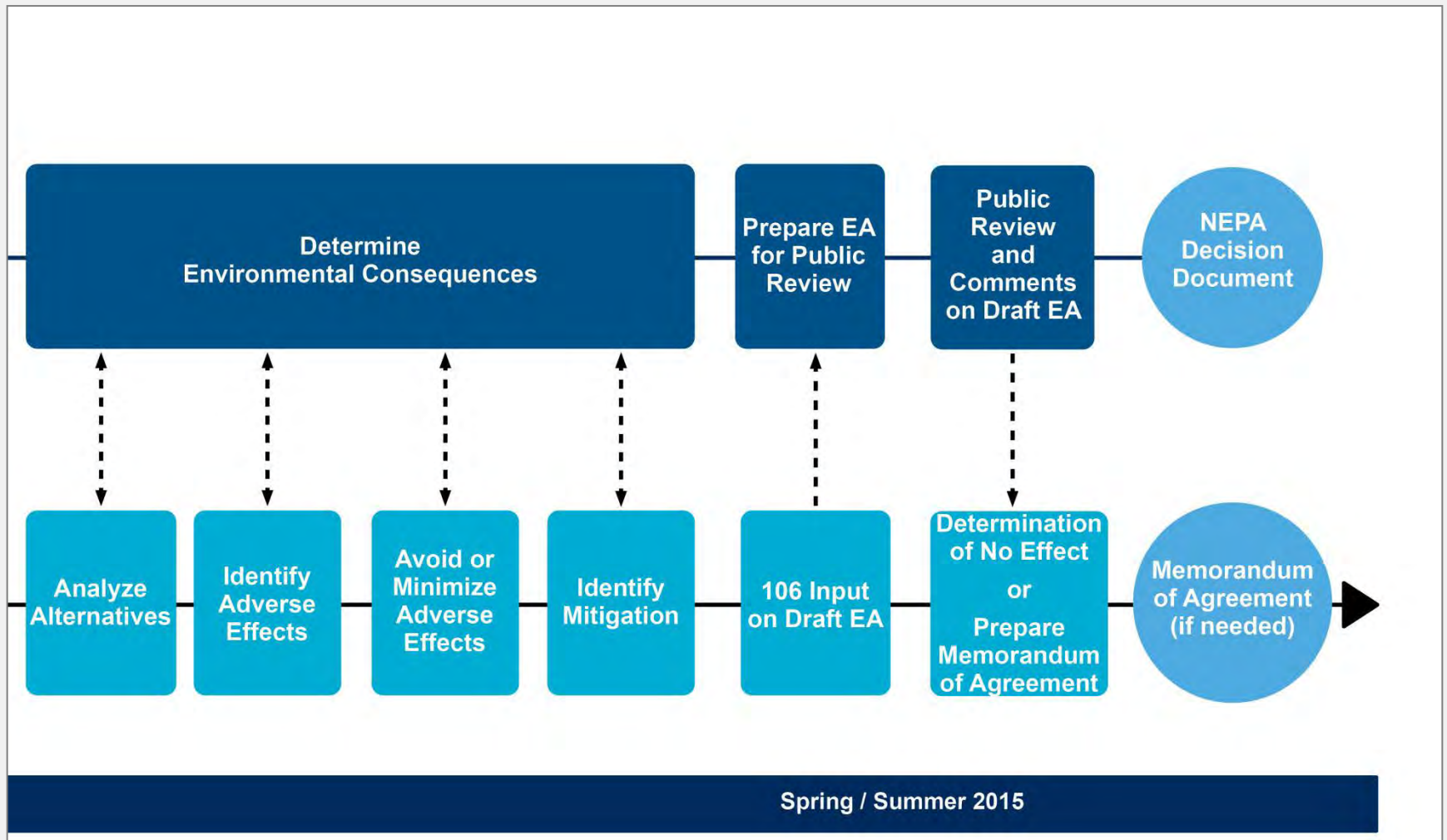
NEPA and Section 106 - A Coordinated Approach



NEPA and Section 106 – Fall/Winter 2014-2015



NEPA and Section 106 – Spring/Summer 2015



NEPA and Section 106 - A Coordinated Approach

The NPS, in cooperation with the NCPC, is evaluating an updated NEPA and Section 106 process for this memorial's site and design. The purpose of this revised process is to better align and support key decision points associated with each agency's NEPA and Section 106 responsibilities, and to ensure that the review is commensurate with the complexity of the project. The NPS and NCPC are proposing a scoping meeting for memorial sites at this time and will be scoping for the design of the memorial at a later date. Following both scoping periods, an EA will be created to document potential environmental impacts. This is a deviation from NCPC's existing Environmental and Historic Preservation Procedures, which requires separate NEPA and Section 106 processes for site selection and the design of the memorial. If you have questions on the proposed updated process and NCPC's guidelines, please contact Cheryl Kelly of NCPC at 202-482-7291 or cheryl.kelly@ncpc.gov.

Section 106 Participants

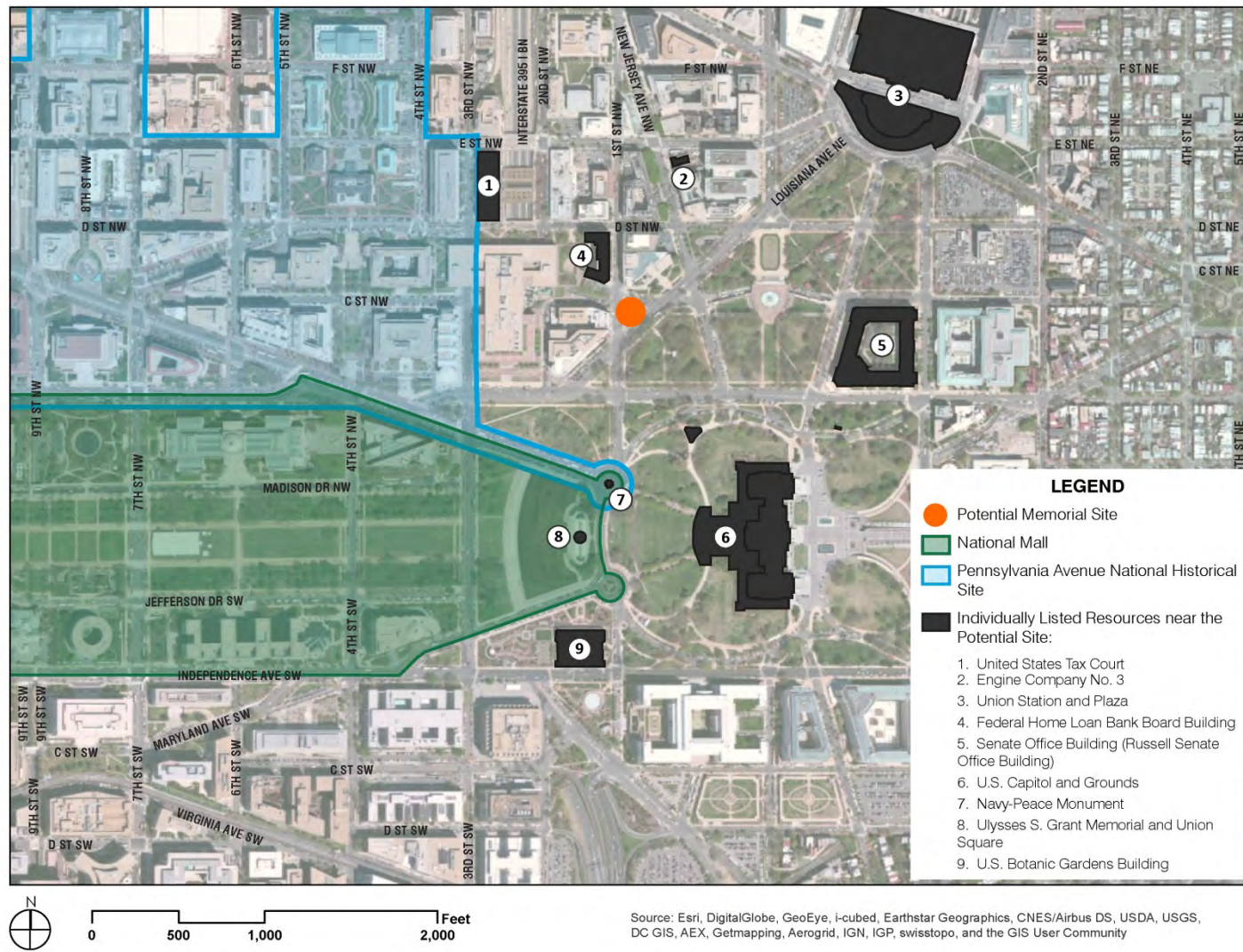
- **State Historic Preservation Office**
- **Advisory Council on Historic Preservation**
- **National Capital Planning Commission**
- **Commission of Fine Arts**
- **National Trust for Historic Preservation**
- **General Public**



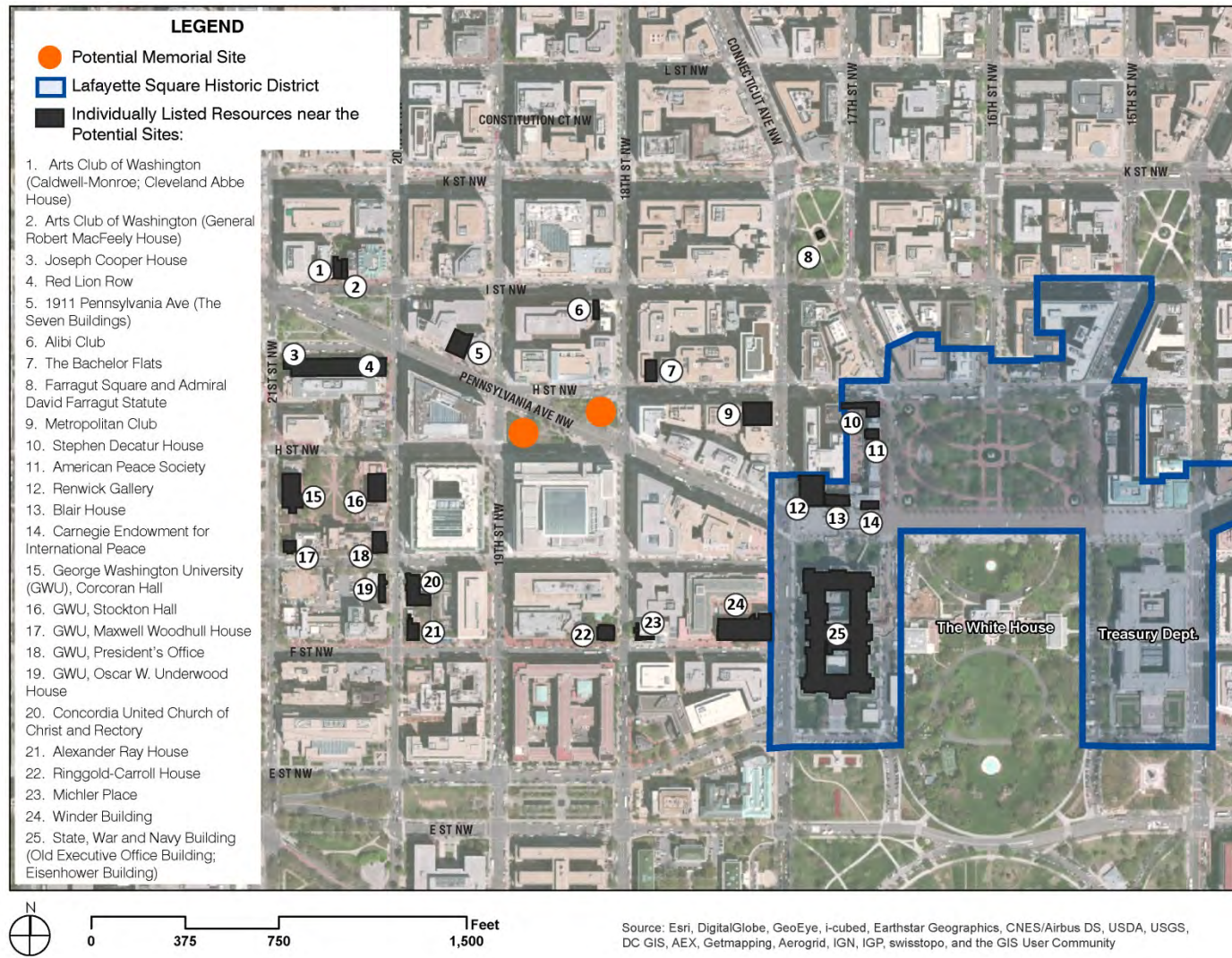
What Issues Will the EA Address?

- **Cultural Resources**
 - Historic Resources
 - Archeology
 - Visual Resources
- **Other Issues**
 - Land Use
 - Utilities
 - Park Operations
 - Visitor Use and Experience
- **Transportation**
 - Traffic Operations
 - Pedestrian Circulation
- **Natural and Physical Resources**
 - Soils
 - Vegetation
 - Water Resources
 - Stormwater

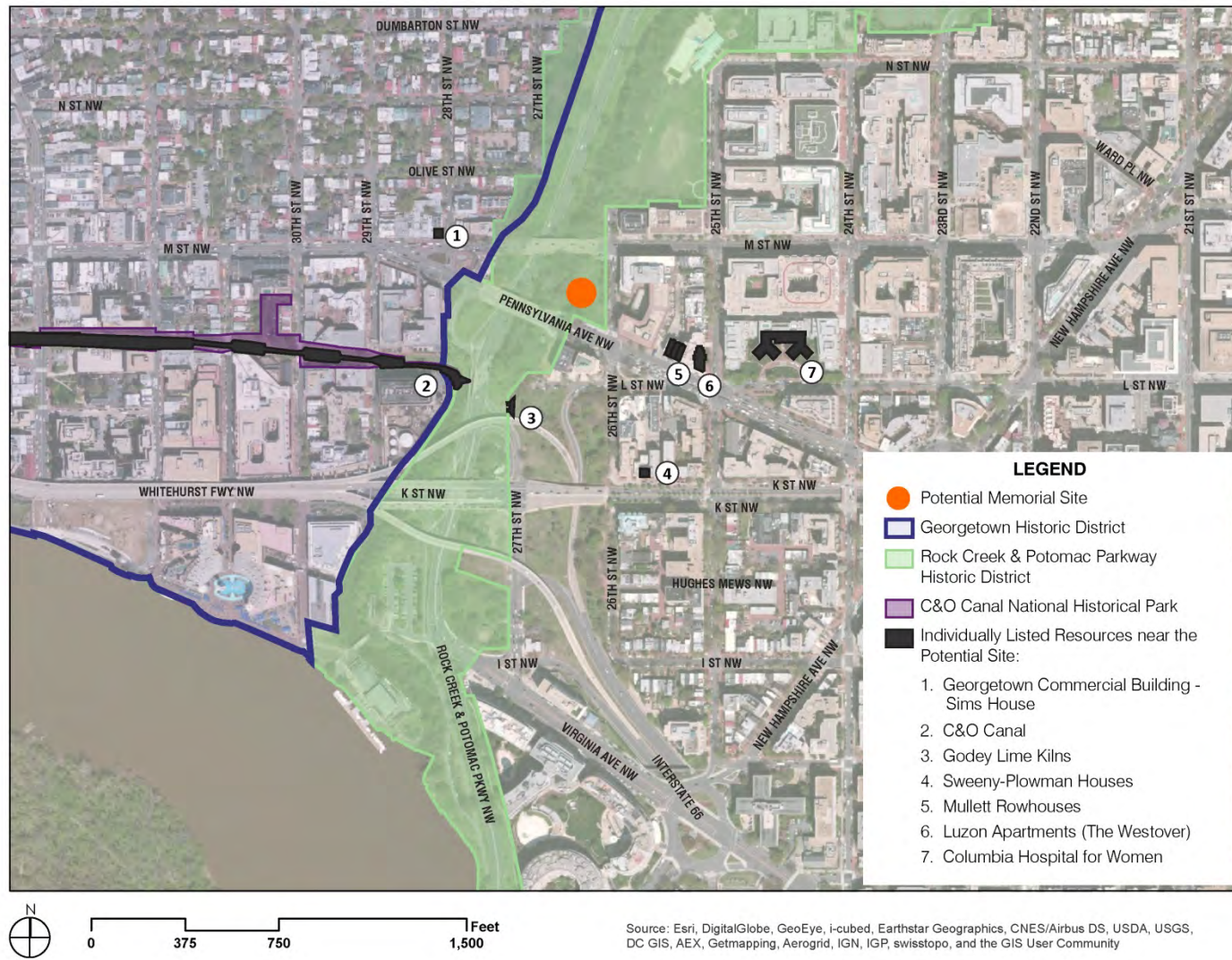
Section 106/Historic Resources- Site 25



Section 106/Historic Resources- Sites 44 North and South



Section 106/Historic Resources- Sites 46 North and South



How Can You Submit Comments?

- During this Meeting
 - Comment Cards
- After this Meeting
 - On-line: <http://parkplanning.nps.gov/nama>
 - Fax: (202) 401-0017
 - Written Comments can be sent to:
Glenn DeMarr
Attn: Peace Corps Commemorative EA
National Park Service
National Capital Region
1100 Ohio Dr. SW
Washington, DC 20242

Agenda

Project Description

Roger Lewis, Peace Corps Commemorative Foundation (PCCF)

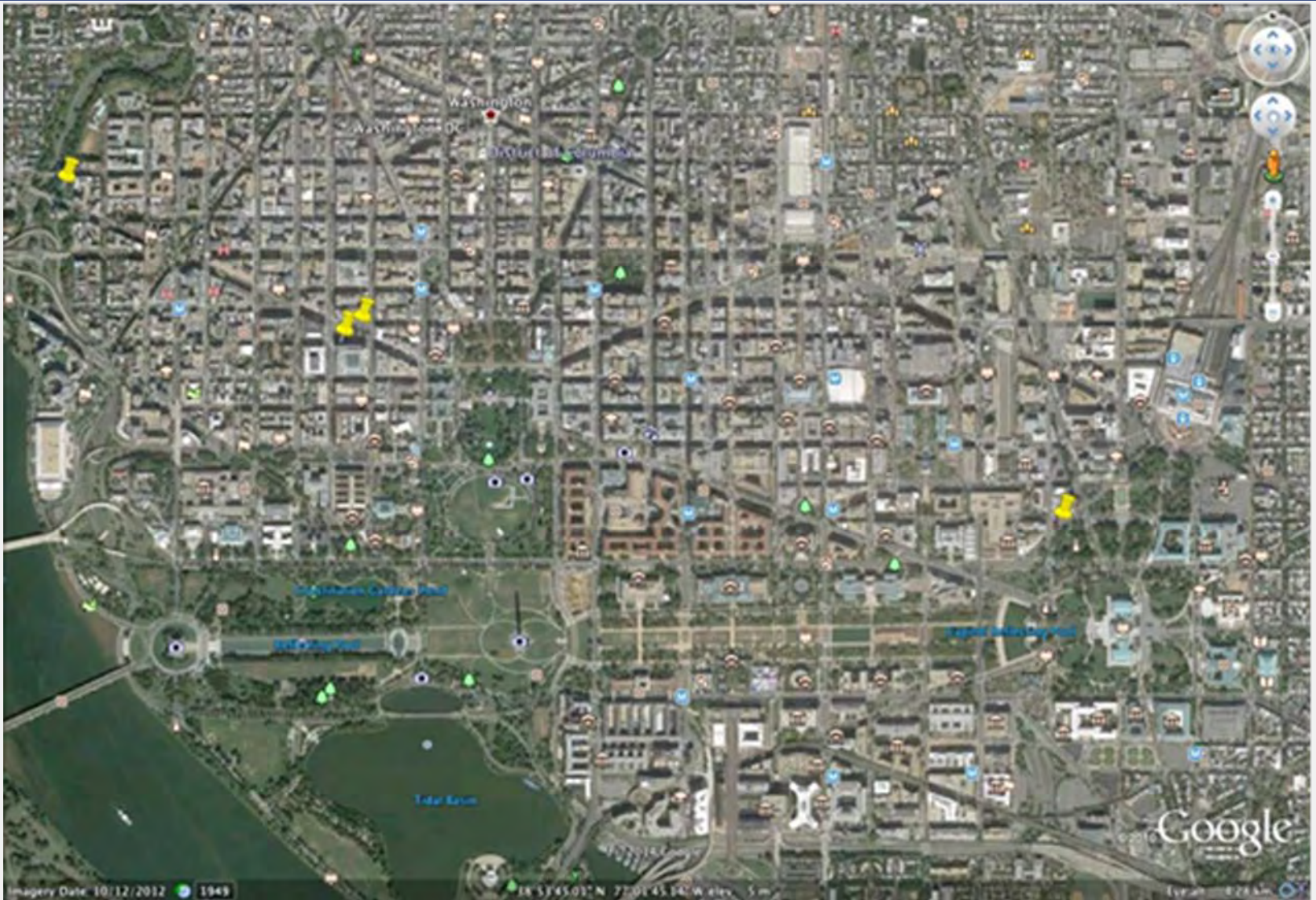
Site Selection Process

- **PCCF developed 10 site selection goals; the four most important were:**
 - **Proximity to Washington's historically significant national edifices, monuments and the Mall**
 - **A location enabling a perceivable sense of meaningful nexus with other historically significant national edifices, monuments and spaces**
 - **Modestly-sized site to enable creation of a modestly scaled, financially feasible yet aesthetically compelling memorial**
 - **Convenient access for pedestrians and adjacent to or near "beaten paths" trod yearly by millions of visitors**

Site Selection Process

- **PCCF originally evaluated approximately 25 potential sites and narrowed to four based on the evaluation criteria (proximity, thematic connection, size, access, and others):**
 - **Site 25: Louisiana Ave NW, C St NW, First St NW**
 - **Site 46: Pennsylvania Ave NW, M & 25th Streets NW, and Rock Creek Park**
 - **Sites 44 north and 44 south: Pennsylvania Ave NW between 18th and 19th Streets NW**

Site Location Map



Site 25: Louisiana Ave NW, C St NW, First St NW

- North of US Capitol Grounds
- Adjacent to Robert A. Taft Memorial
- Site is (<0.25 ac) and flat
- Grass panel surrounded by sidewalks



Site 25: Louisiana Ave NW, C St NW, First St NW



Site 46: Pennsylvania Ave NW, M & 25th Streets NW, and Rock Creek Park

- One-acre, flat site
- Grass panel and trees
- Foggy Bottom Metro station 4 blocks away



Site 46: Pennsylvania Ave NW, M & 25th Streets NW, and Rock Creek Park



Site 44 North: Pennsylvania Ave NW between 18th and 19th Streets NW

- Maintained as grass panel with a few landscape trees
- Near White House



Site 44 North: Pennsylvania Ave NW between 18th and 19th Streets NW



Site 44 South: Pennsylvania Ave NW between 18th and 19th Streets NW

- **Similar to Site 44 North**
- **Grass panel with landscape trees**
- **Near White House**



Agenda

Opportunity for Public Comment

Comment Note

Please Note:

Before including your address, phone number, e-mail address, or other personal identifying information in your comment, you should be aware that your entire comment – including your personal identifying information – may be made publicly available at any time. While you can ask us in your comment to withhold your personal identifying information from public review, we cannot guarantee that we will be able to do so.

How Can You Submit Comments?

- During this Meeting
 - Comment Cards
- After this Meeting
 - On-line: <http://parkplanning.nps.gov/nama>
 - Fax: (202) 401-0017
 - Written Comments can be sent to:
Glenn DeMarr
Attn: Peace Corps Commemorative EA
National Park Service
National Capital Region
1100 Ohio Dr. SW
Washington, DC 20242