



DOWN
TOWN
DC



AGENDA

Presentation

- Welcome + Introduction
- Design Update

Revised Draft MOA Discussion

MEETING GOALS

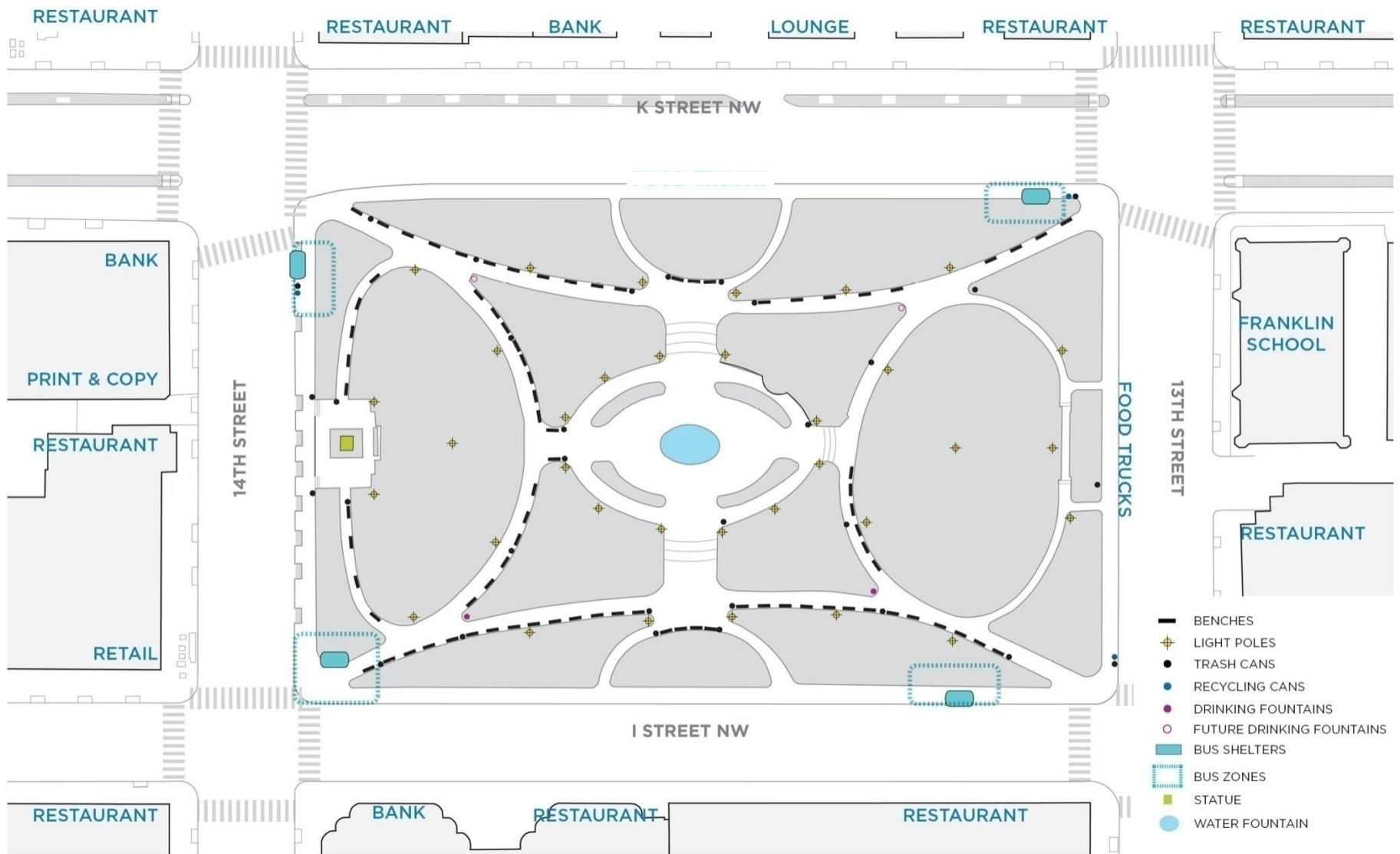
- Discuss and finalize revised draft MOA



LEGEND

 Area of Potential Effect (APE)






OLIN + ZGF

PURPOSE



The purpose of the project is to revitalize Franklin Park in a manner that respects and enhances the historic and urban qualities of the park while transforming it into an active, flexible, and sustainable park that is connected to its community.

NEED



As a large park situated within the increasingly populated center city, lacking access to open space, Franklin Park provides a unique opportunity to serve the community and enhance urban living. Currently, park features are deteriorated and essential services, such as adequate seating and programming, are lacking. In addition, opportunities exist for better connections to both the historic and current urban context. The project is needed to address these deficiencies and revitalize the park so that it attracts and serves all visitors.

ACTIVATE THE PARK

ENGAGE + CONNECT THE COMMUNITY

REVEAL HISTORY

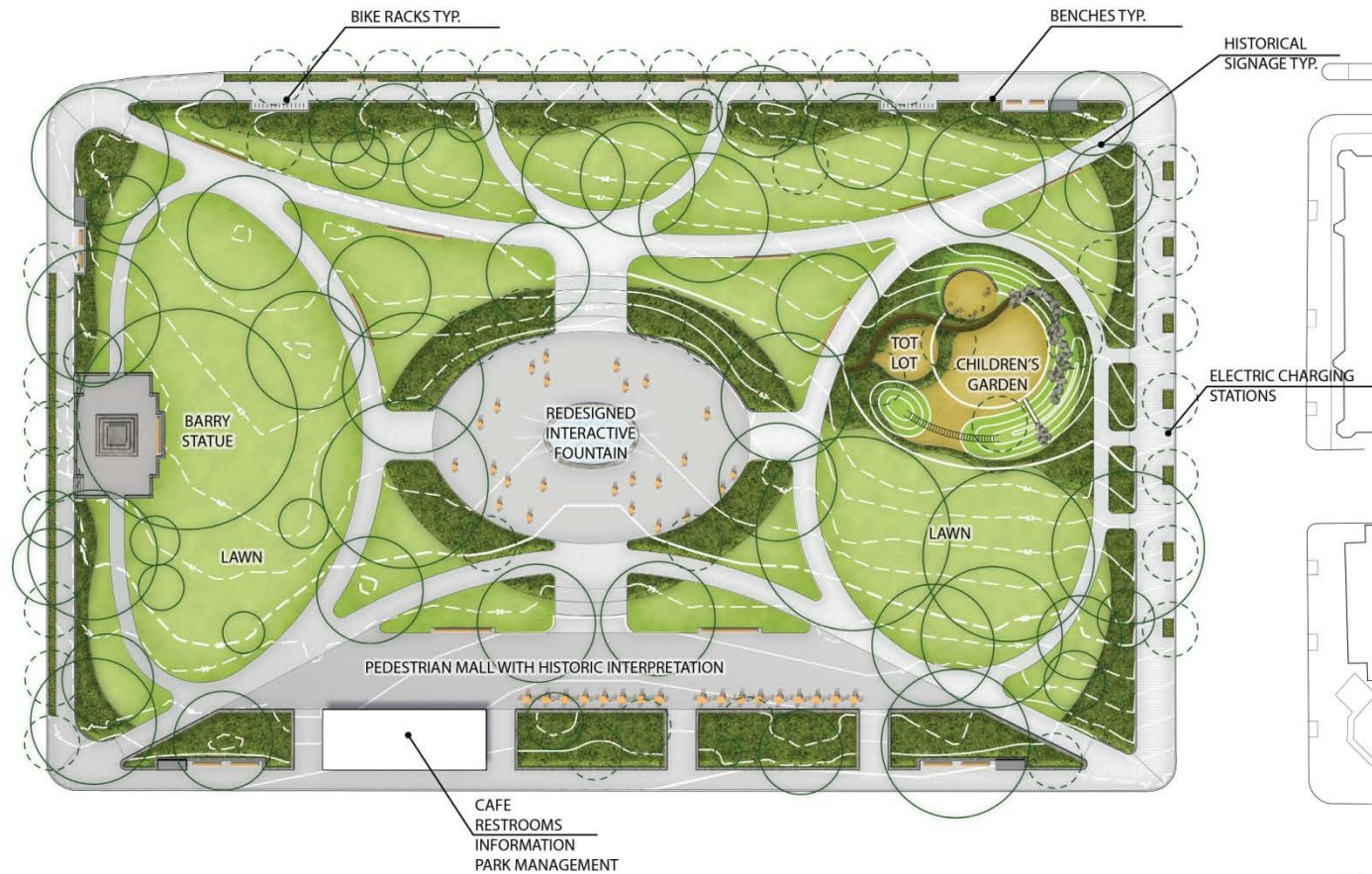
INFUSE SUSTAINABILITY

MANAGE AND FINANCE FOR SUCCESS

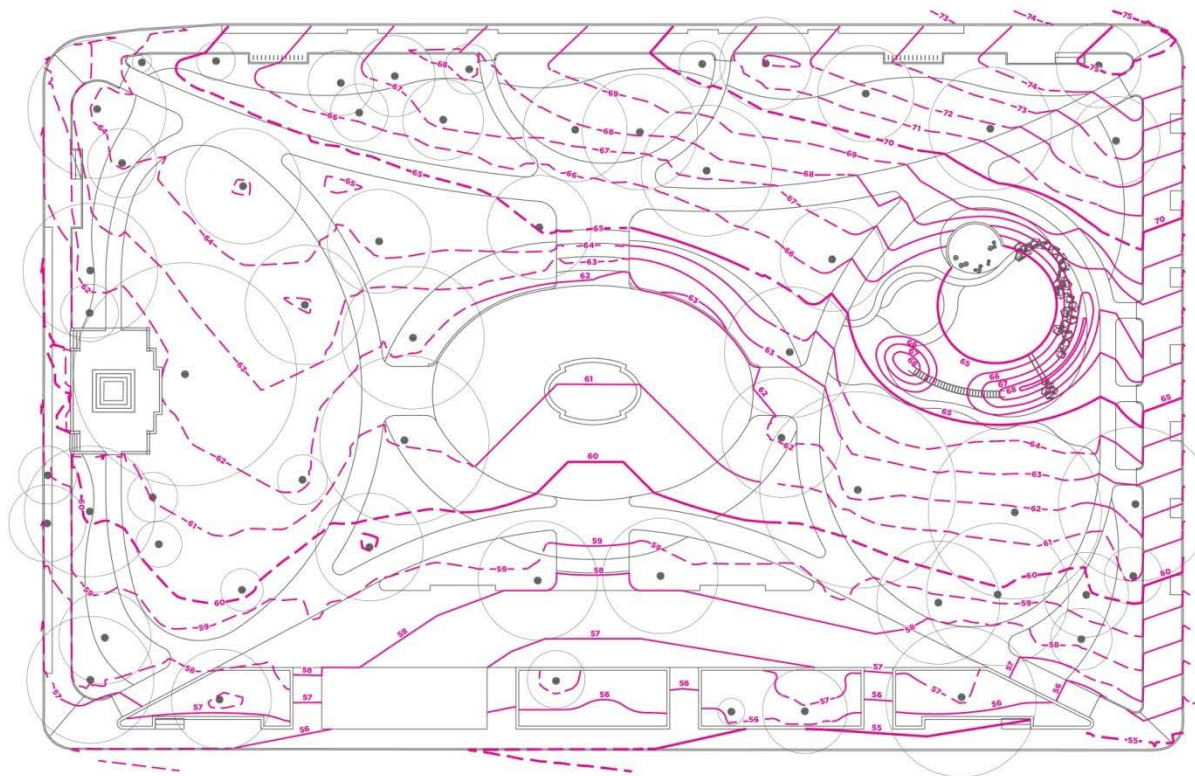
PROJECT GOALS

THE EDGE

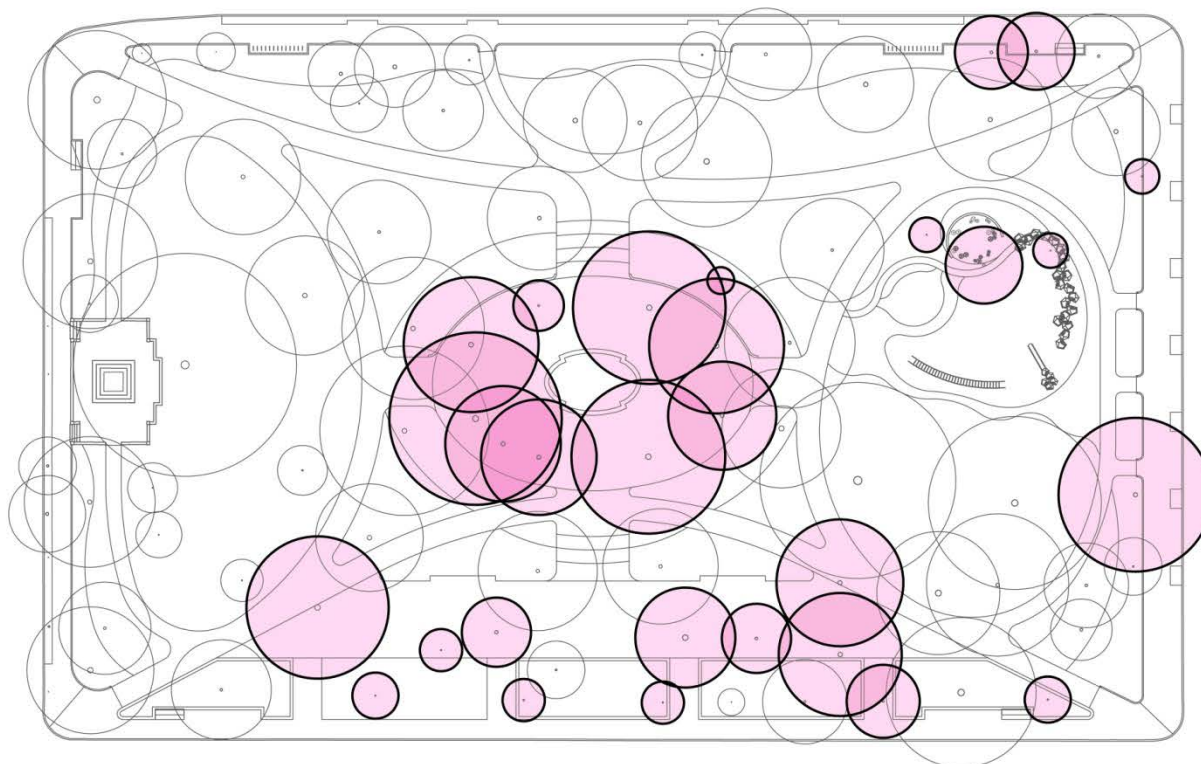
PAVING
PLANTING
CHILDREN'S GARDEN
FOUNTAIN
CAFÉ / RESTROOMS / OPERATIONS



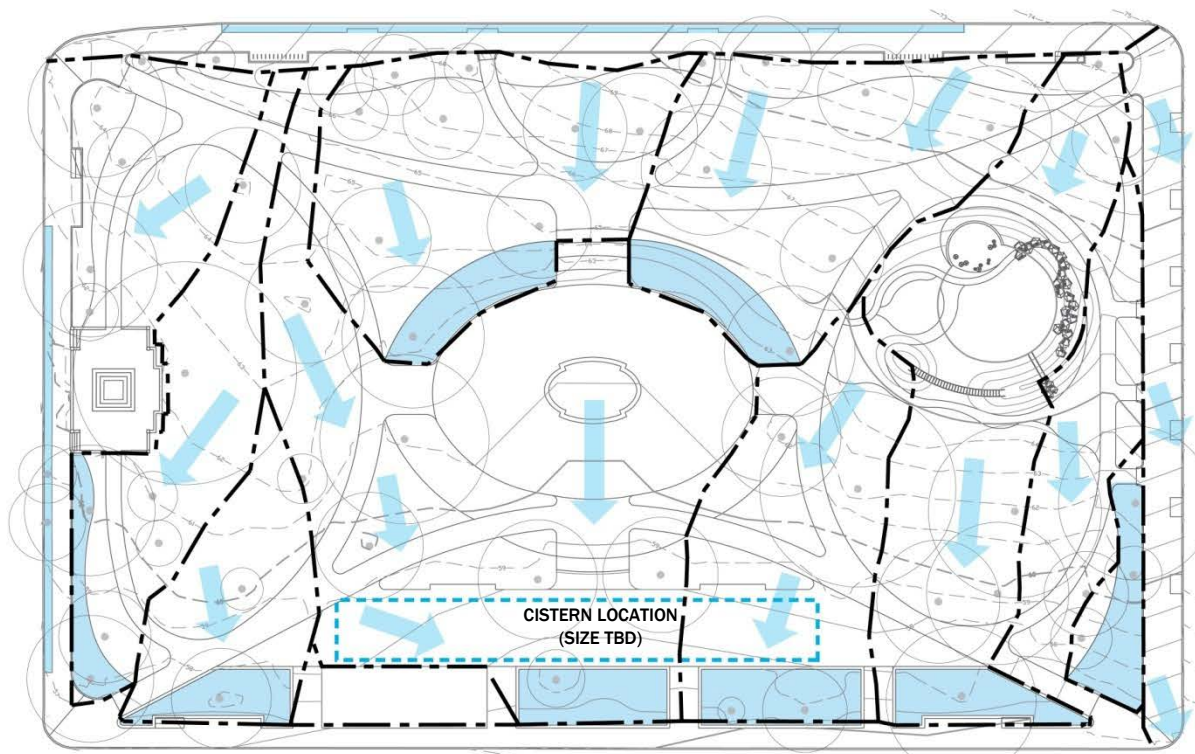
OLIN + ZGF



OLIN + ZGF



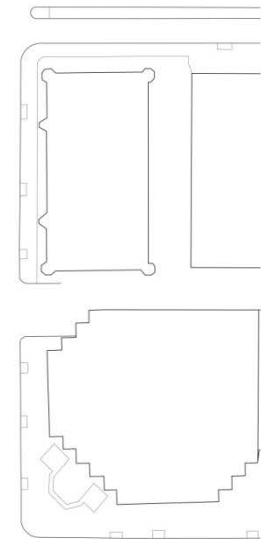
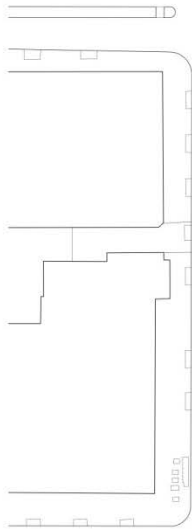
OLIN + ZGF



Note: DDOE requirements are achieved with design capacity of proposed rain gardens. Cistern is intended for stormwater capture, storage, and reuse for irrigation and café/restroom gray water.

OLIN + ZGF

PAVING



Design Goals:

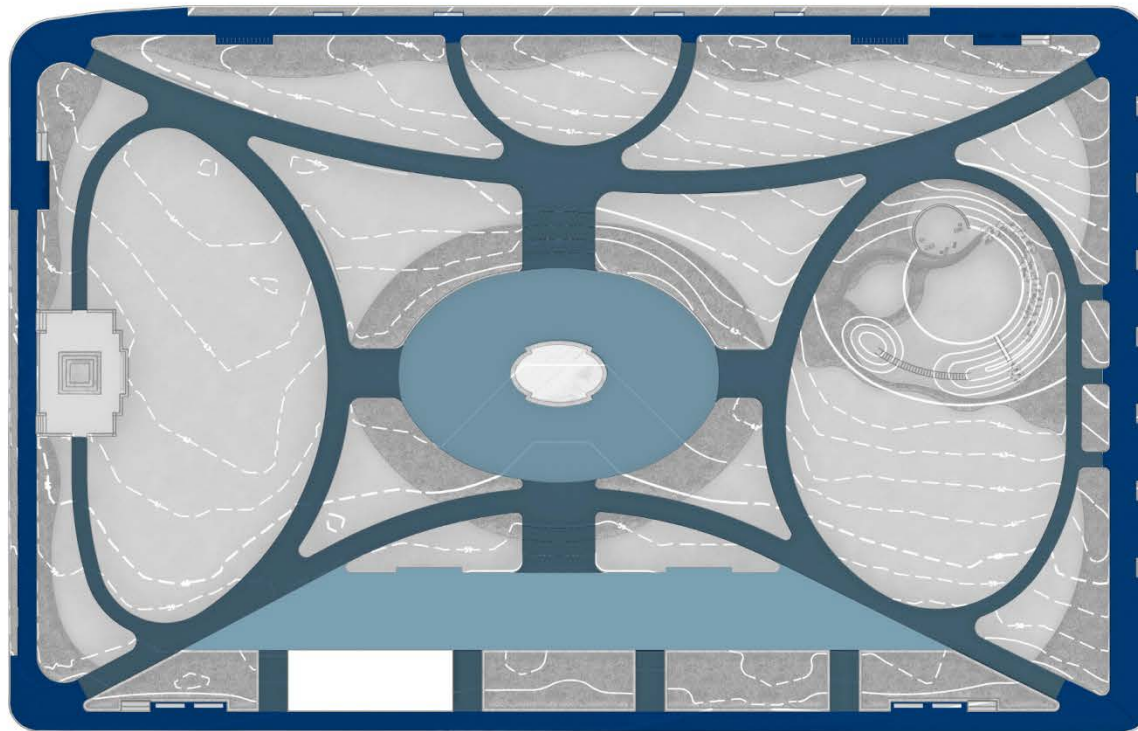
- Coordinate with DDOT and NPS standard materials
- Reuse bluestone
- Specify durable materials
- Cool palette



CONCRETE PAVER - DC STANDARD



BLUE STONE



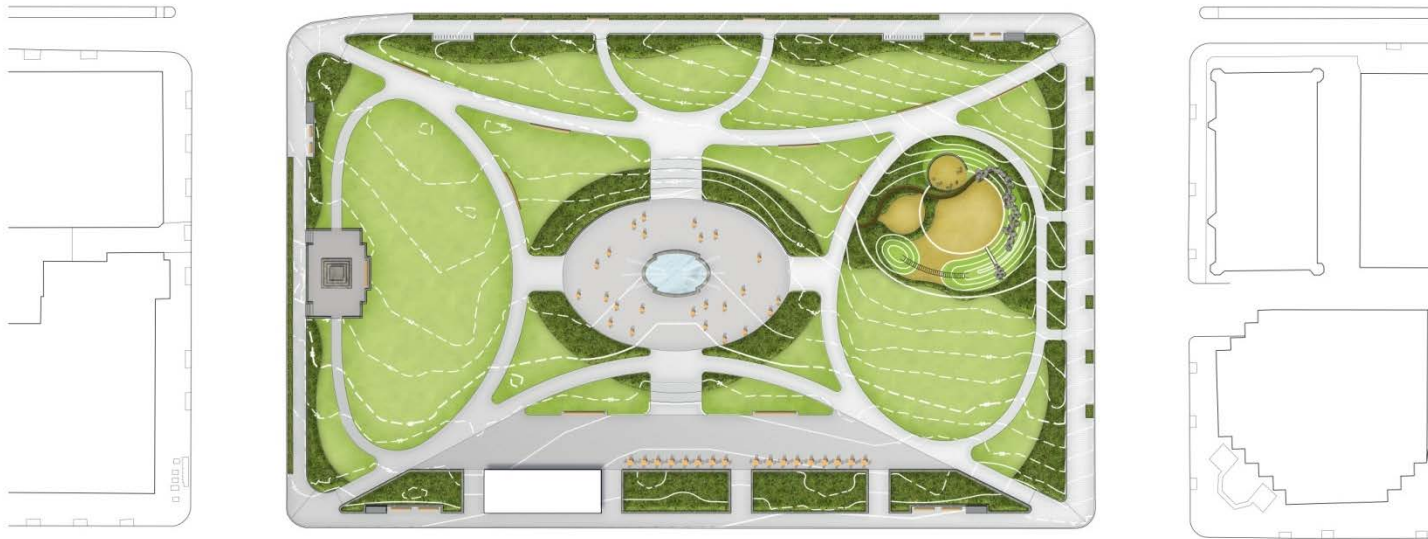
CONCRETE - EXPOSED AGGREGATE



HISTORICAL INTERPRETION - ENGRAVING

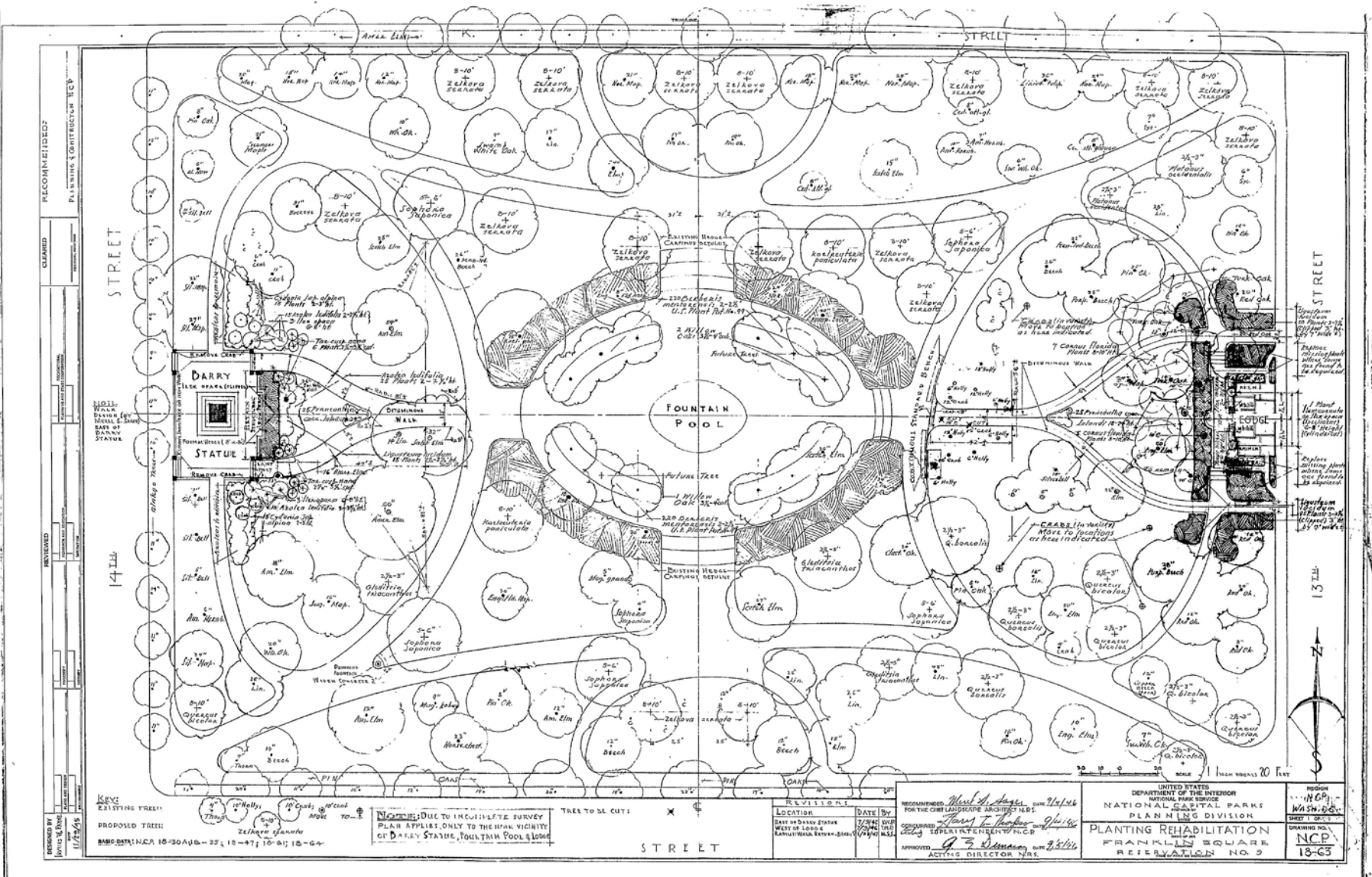
OLIN + ZGF

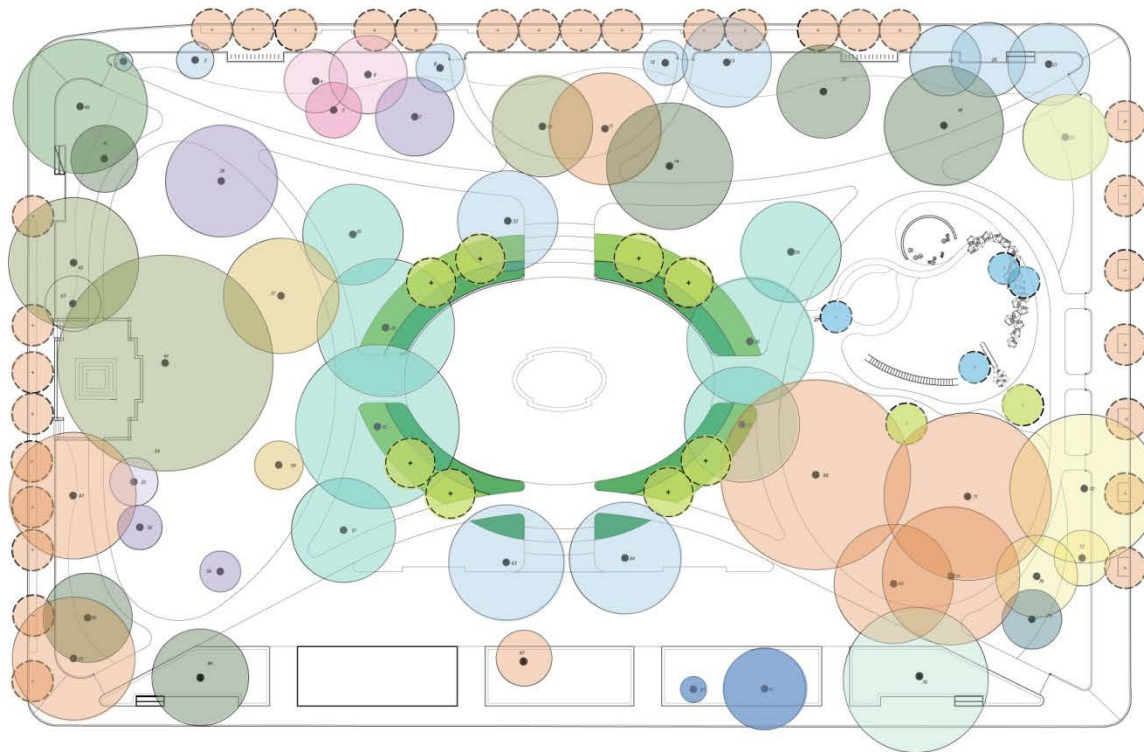
PLANTING



Design Goals:

- Incorporate planting with seasonal interest
- Use native/naturalized lower-maintenance species where possible
- Provide performative plantings for rain gardens
- Reference previous palettes – lush quality, color/texture, space making





NATIVE/NATURALIZED SEASONAL INTEREST WATER RECEIVING



WILLOW OAK






AUTUMN BLAZE MAPLE



CAROLINA SILVERBELL

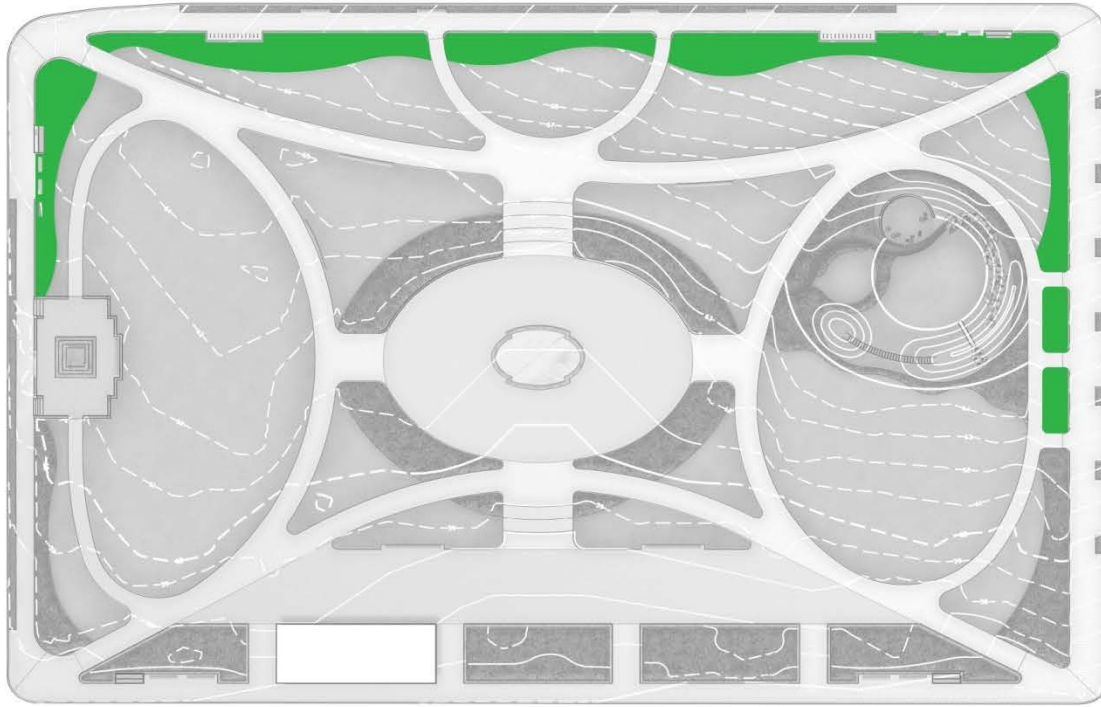
| | | | |
|--|---|---|--|
|  | QUERCUS PHELLOS, WILLOW OAK |  | MAGNOLIA ACUMINATA, CUCUMBER MAGNOLIA |
|  | STYPHNOLOBIUM JAPONICUM, PAGODA TREE |  | MAGNOLIA SOULANGIANA, SAUCER MAGNOLIA |
|  | LIRIODENDRON, TULIP TREE |  | QUERCUS RUBRA, RED MAPLE |
|  | ZELKOVA SERRATA, ZELKOVA |  | PLATANUS ACERIFOLIA, LONDON PLANE |
|  | QUERCUS ALBA, WHITE OAK |  | ULMUS AMERICANA, AMERICAN ELM |
|  | QUERCUS PALUSTIS, PIN OAK |  | ULMUS RUBRA SLIPPERY ELM |
|  | TILIA CORDATA, LINDEN |  | CEDRUS ATLANTICA, ATLAS CEDAR |
|  | MALUS SPP, CRABAPPLE |  | CEDRUS DEODARA, DEODAR CEDAR |
|  | EXISTING TREE |  | PROPOSED TREE |

| | |
|---|---|
|  | ACER FREMONTII 'AUTUMN BLAZE', BLAZE RED MAPLE |
|  | HALESIA CAROLINA CAROLINA SILVERBELL |
|  | QUERCUS PHELLOS, WILLOW OAK |
|  | HERITAGE PLANT |

New plantings have been chosen with a variety of criteria in mind including favoring native species, being low-maintenance, rugged, seasonally interesting and appropriate to the micro-climate of their specific location in plan.

Additionally, favor was given to the selection of species that reflect and pay homage to trees and plants found on archival planting plans. Some "heritage plants" are now known to be invasive and were not considered. Listed below are some of the plants that are known to have been planted in the past.

| | | | | |
|------------------|-----------------------|------------------------|--------------------|--------------------|
| Quercus phellos | Gleditsia triacanthos | Sophora japonica | Azalea spp. | Ligustrum (privet) |
| Carpinus betulus | Tilia americana | Fagus sylvatica | Osmanthus spp. | Narcissus spp |
| Quercus spp. | Magnolia stellata | Aesculus hippocastanum | Abelia grandiflora | Vinca minor |
| Halesia carolina | Ulmus campestris | Crataegus crus-galli | Contoneaster | |
| Malus spp. | Cornus florida | Sophora japonica | Euonymus coloratus | |



HELLEBORUS SPP.



EPIMEDIUM 'FRONLEITEN'



SALVIA SPP.



GERANIUM MACHRORHYZUM



DAFFODIL 'ICE FOLLIES'



HOSTA SPP.



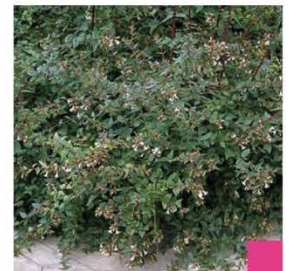
VINCA MINOR



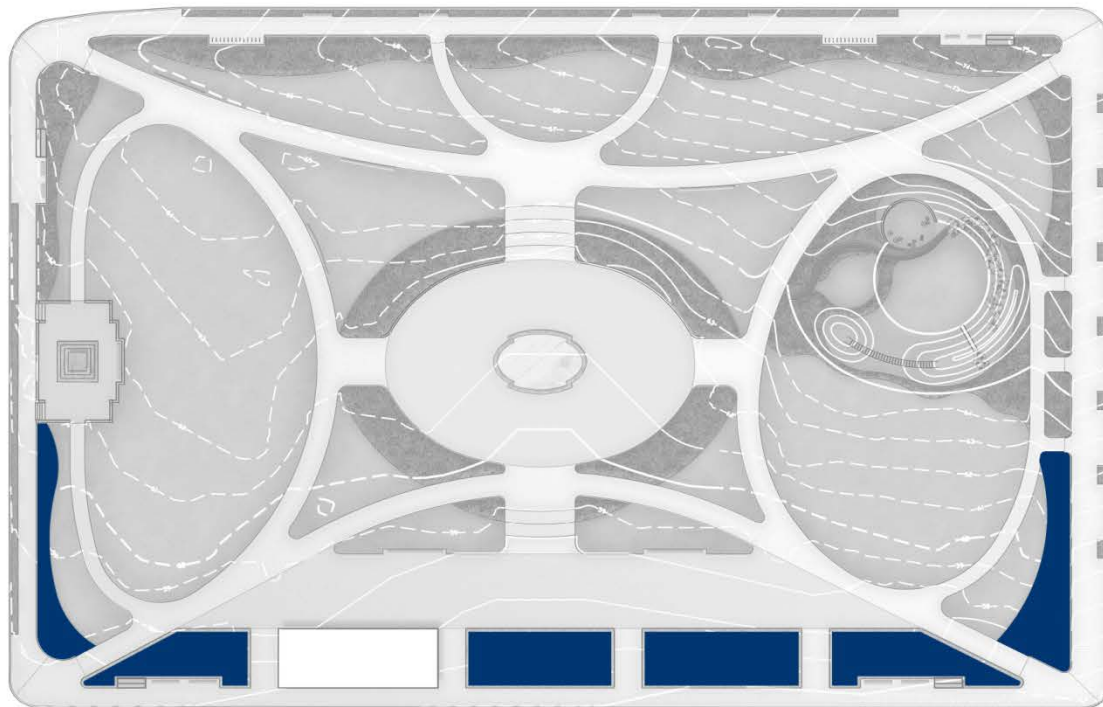
PACHYSANDRA PROCUMBENS



CEANOTHUS AMERICANUS



ABELIA GRANDIFLORA



FOTHERGILLA GARDENII



HYDRANGEA QUERCIFOLIA



TIARELLA SPP.



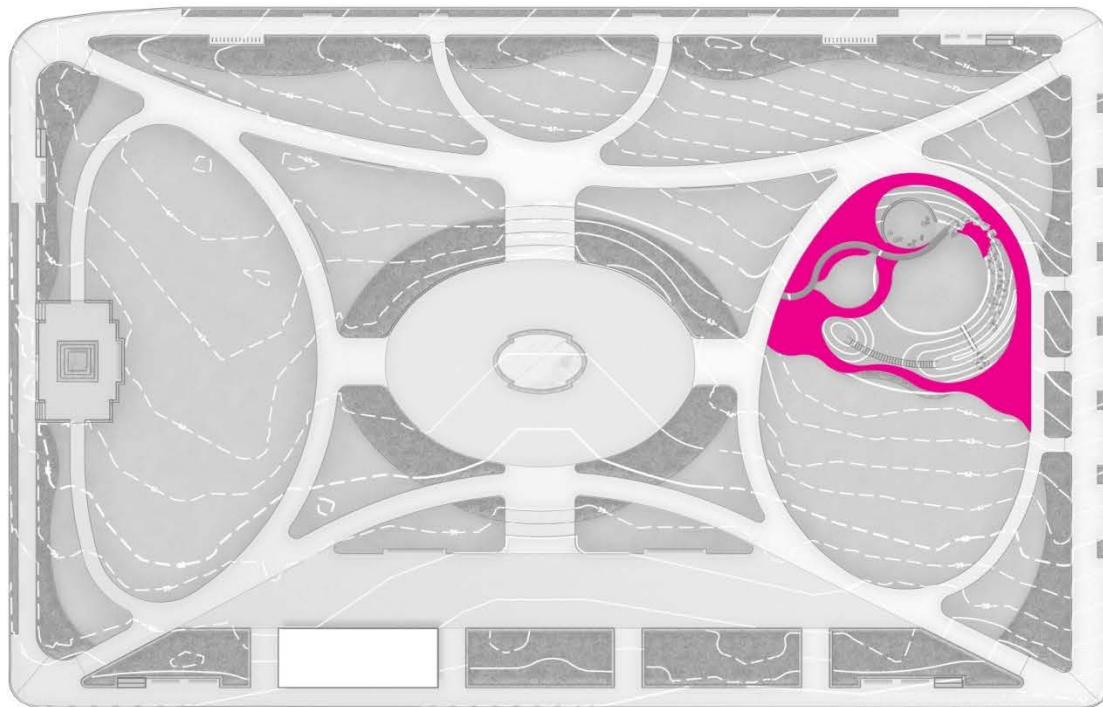
PHLOX STOLONIFERA



RHODODENDRON VICOSUM



FOTHERGILLA GARDENII



HALESIA CAROLINA



OSMANTHUS HETEROPHYLLUS 'ROTUNDIFOLIUS'



AZALEA VASEYI - early bloom



NEPETA 'SIX HILLS GIANT'



COTONEASTER DAMMERI



HOSTA SPP.



HAKONECHLOA MACRA



STIPA TENUISSIMA



HYPERICUM CALCYNUM



OSTRICH FERN



RHODODENDRON ALABAMENSE - mid season bloom



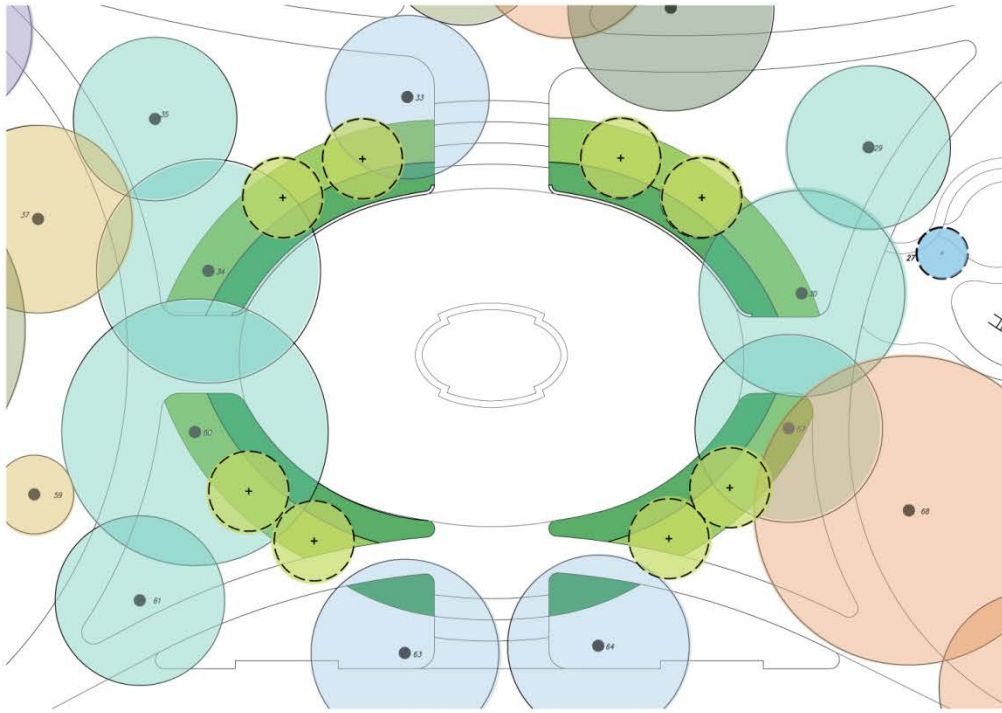
RHODODENDRON ARORESCENS - late blooming



ALLIUM & BLUE OAT GRASS



LIRIOPE MUSCARI



SOPHORA JAPONICA - EXISTING



SOPHORA JAPONICA - FALL



PACHYSANDRA PROCUMBENS



ACER FREEMANII AUTUMN BLAZE- FALL



PHLOX STOLONIFERA



DAFFODIL 'ICE FOLLIES'



HELLEBORUS SPP.



CORNUS 'KELSYI', 24" - 30"



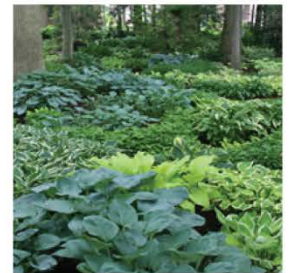
CORNUS KELSYY WITH CAREX



CAREX 'EVERGOLD'



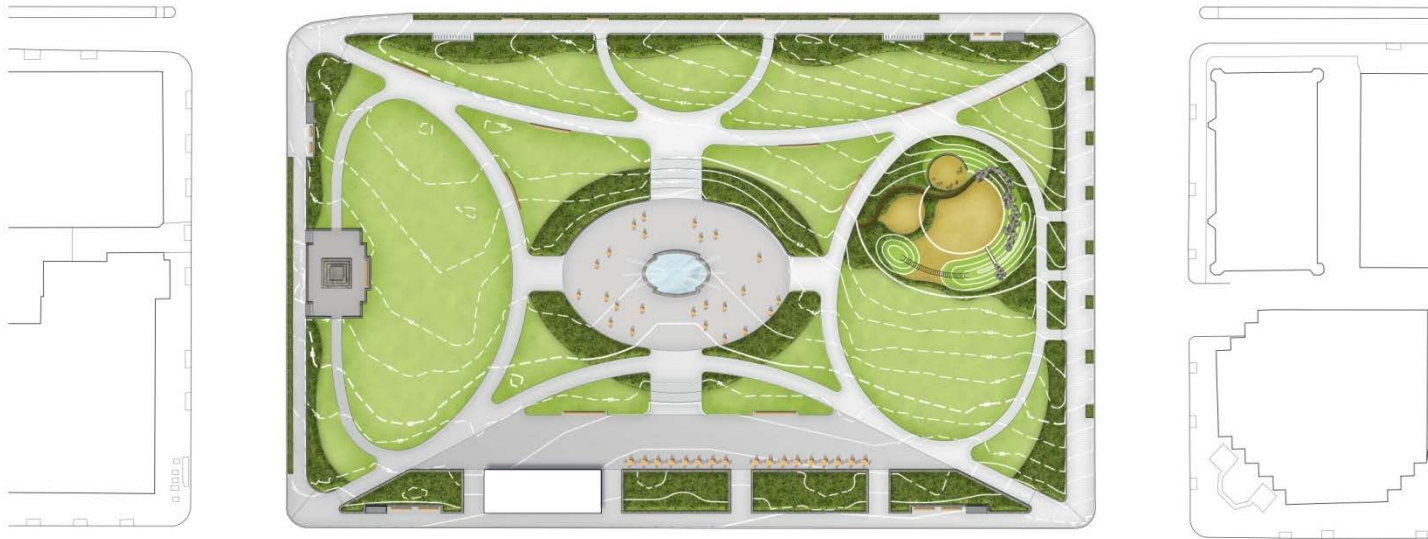
TIARELLA SPP.



HOSTA SPP.

PLAY AREA



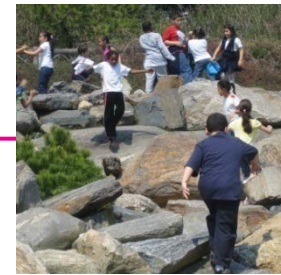
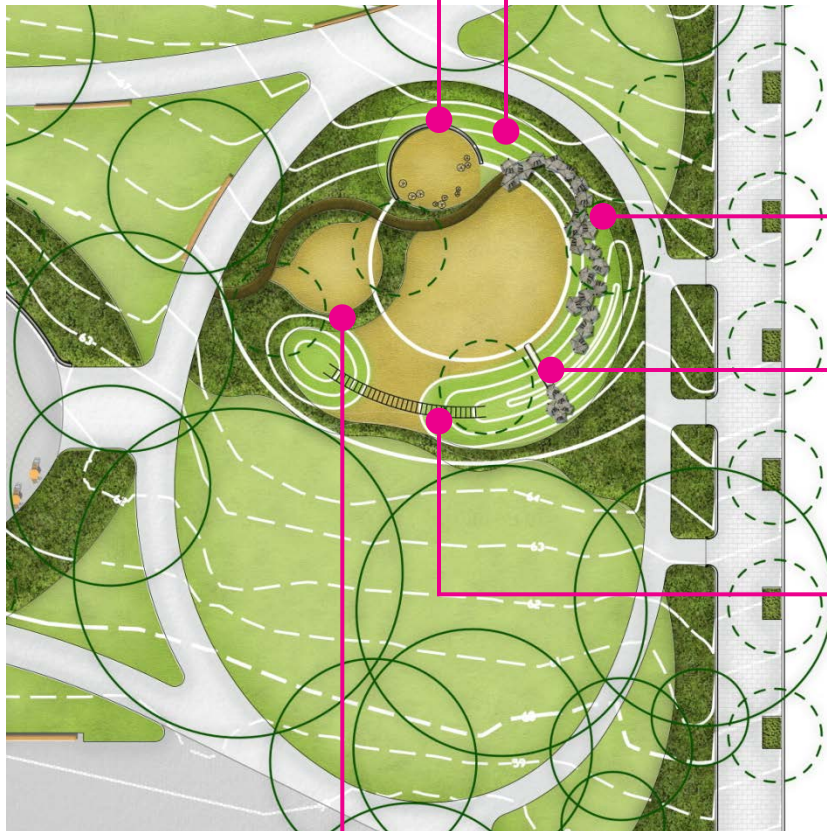


Design Goals:

- Outdoor play area for local school, childcare facilities, and families
- Create space for interpretive and spontaneous play
- Cultivate imagination and promote environmental education
- Create sense of enclosure through planting and grading
- Reference larger environmental context / Rock Creek Park



CHILDREN'S GARDEN – POTOMAC WATERSHED



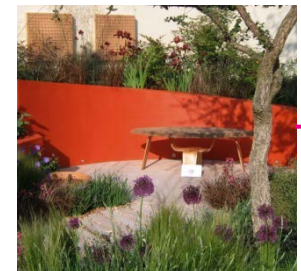
BOULDERS



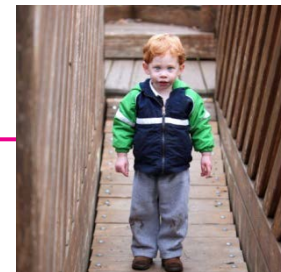
LANDFORM



SLIDE



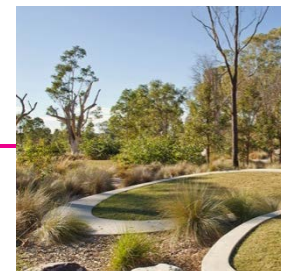
ENCLOSURE - WALL



BRIDGE



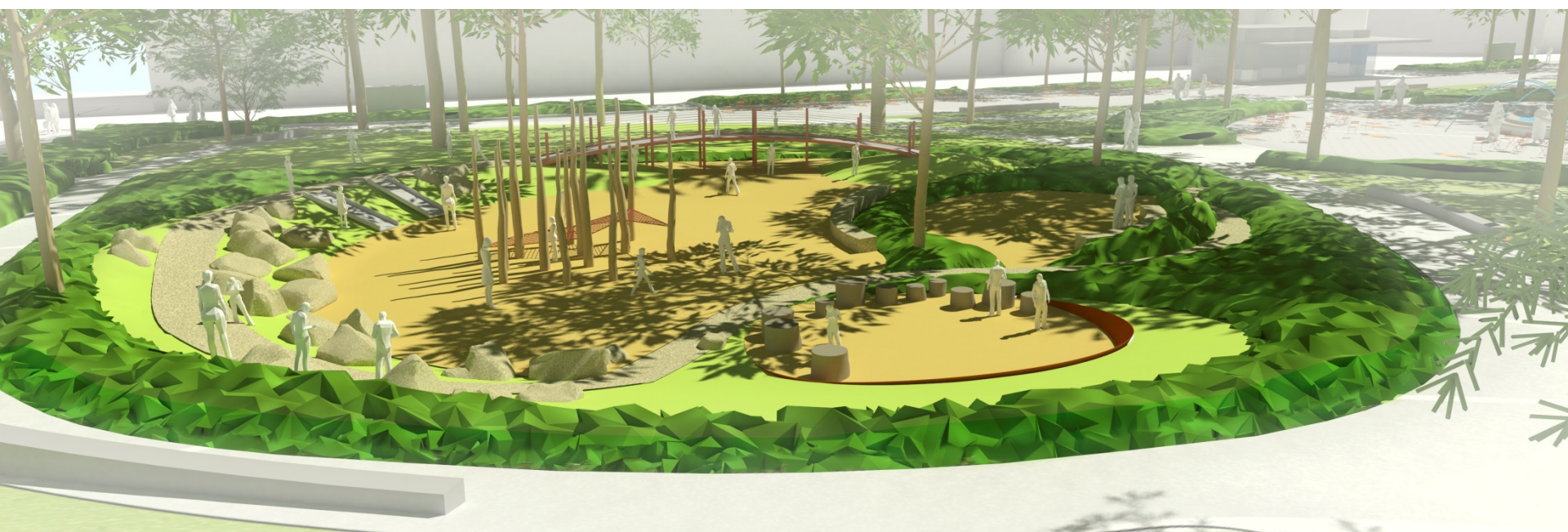
CLIMBING BARS



ENCLOSURE - PLANTING



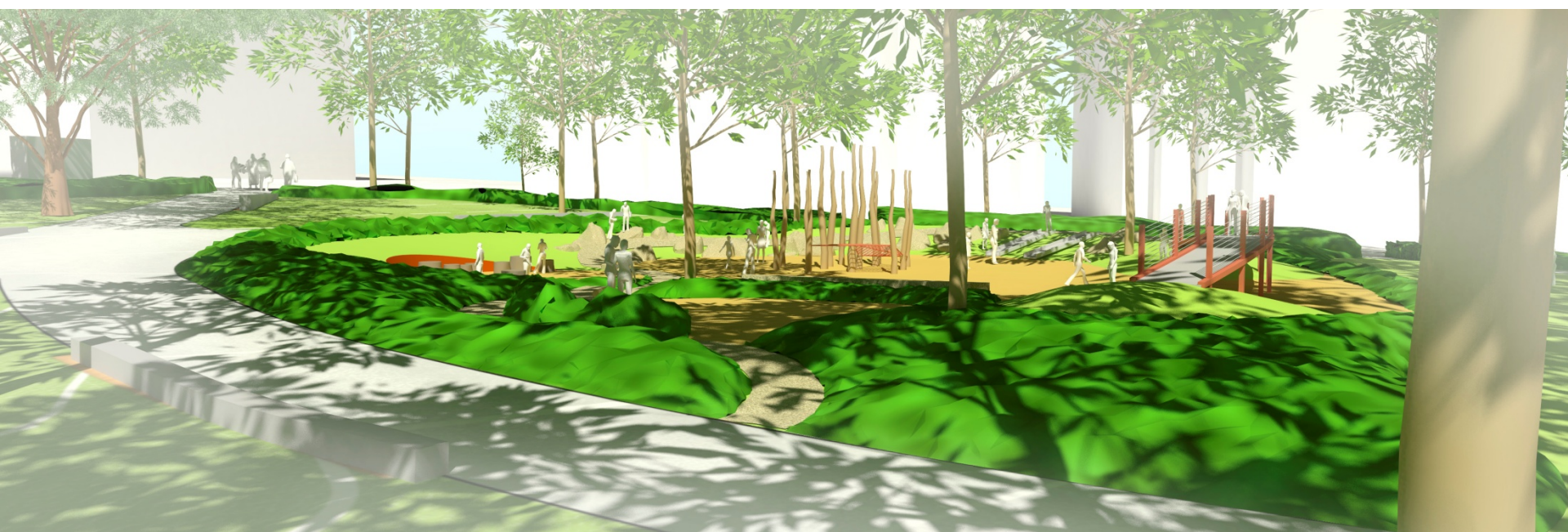
ENGINEERED WOOD FIBER



OLIN + ZGF



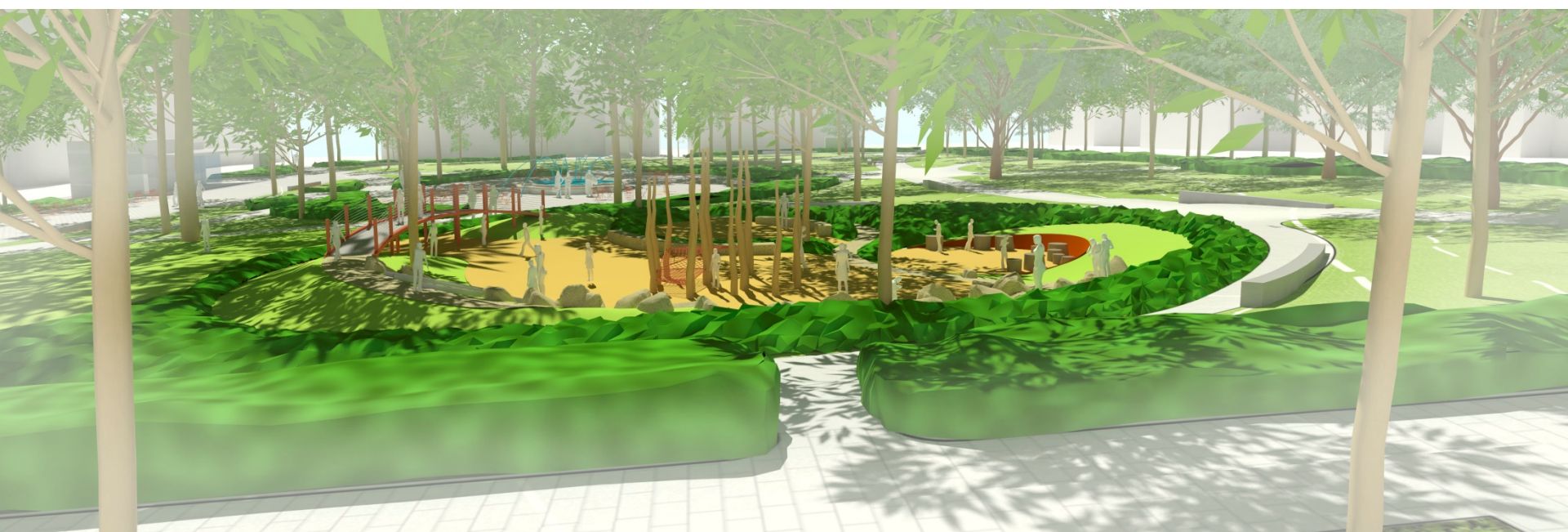
OPTION A FROM NORTH



OLIN + ZGF



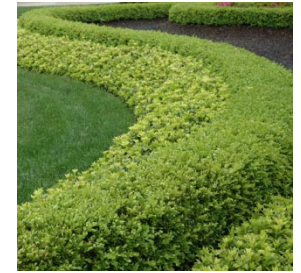
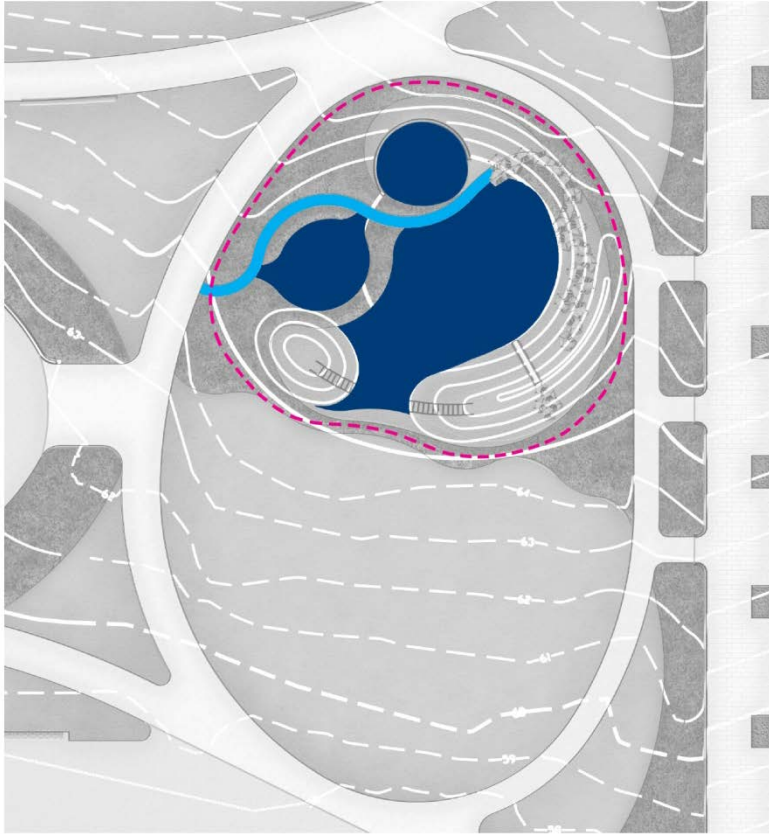
OPTION A FROM WEST



OLIN + ZGF



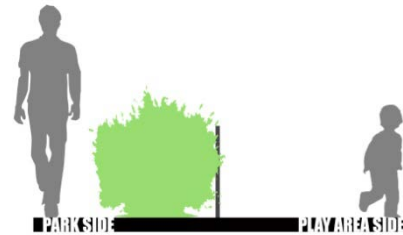
OPTION A FROM EAST



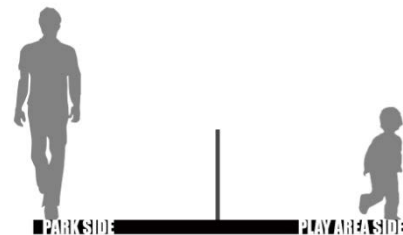
PLANTED BARRIER



LIVING



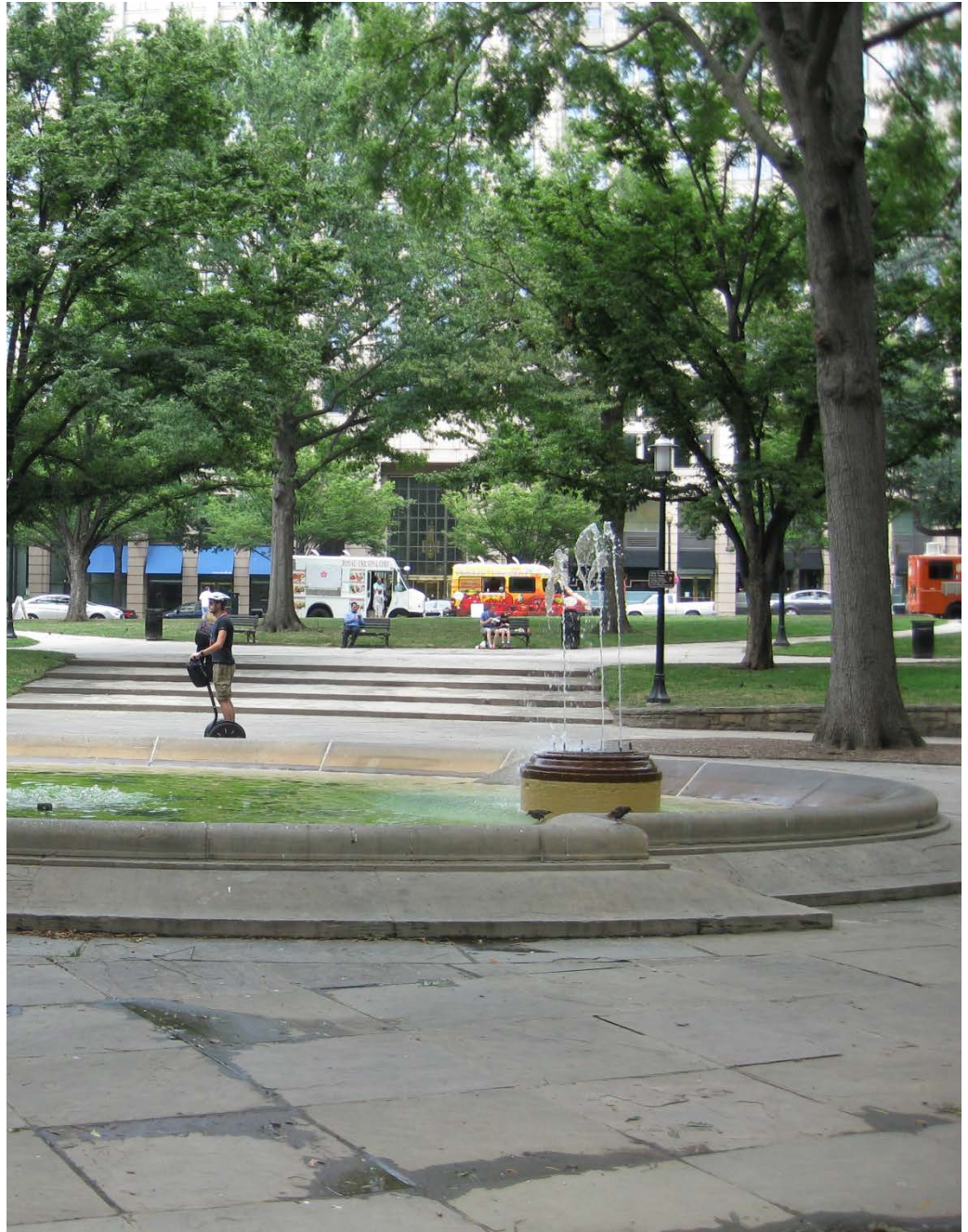
ABSTRACT

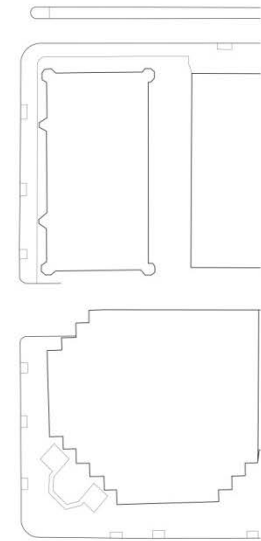
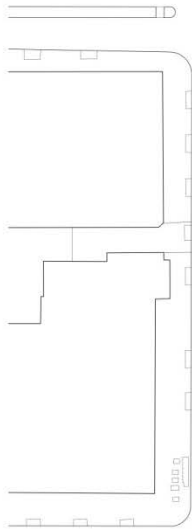


HISTORICAL FENCE

FENCE/PLAY POSITIONING

CENTRAL FOUNTAIN

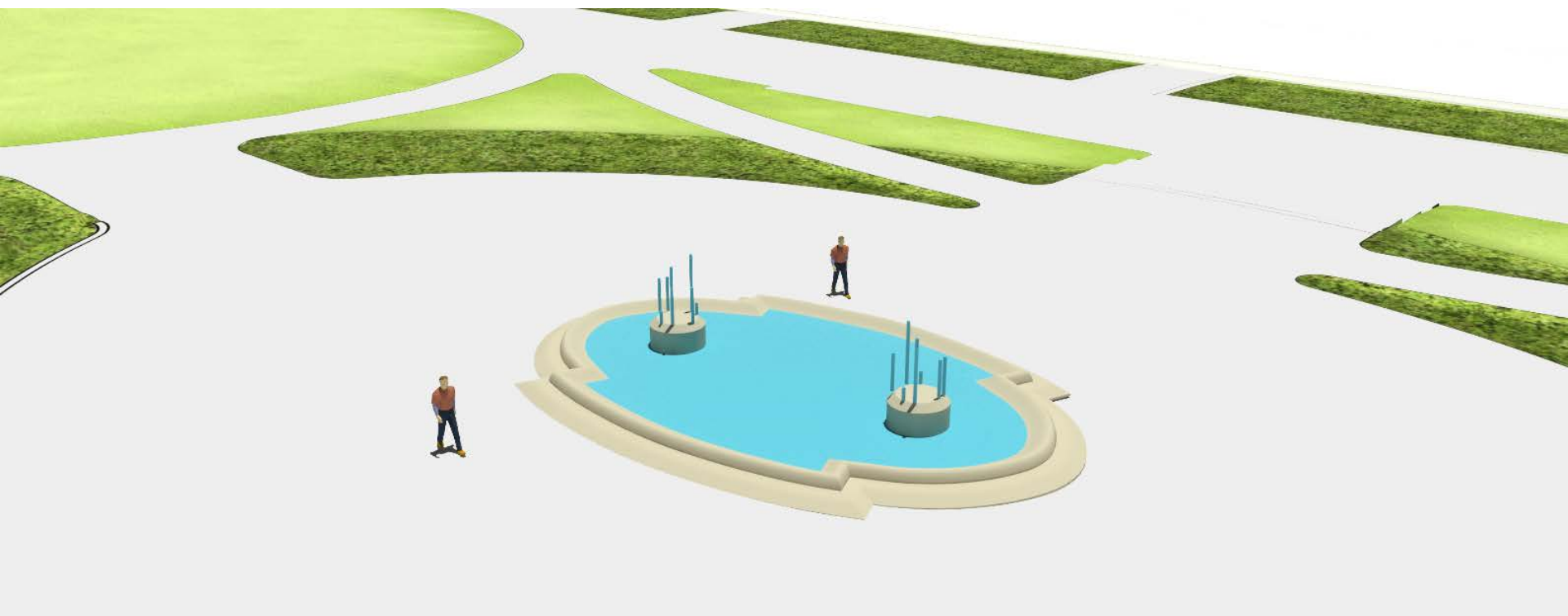




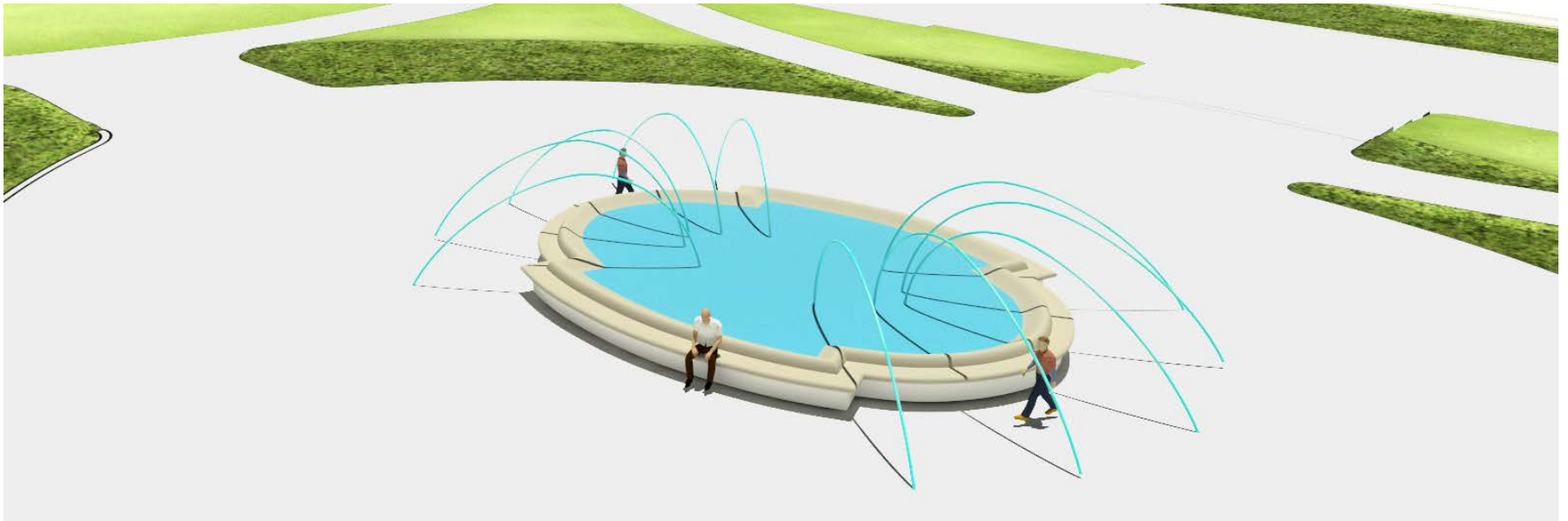
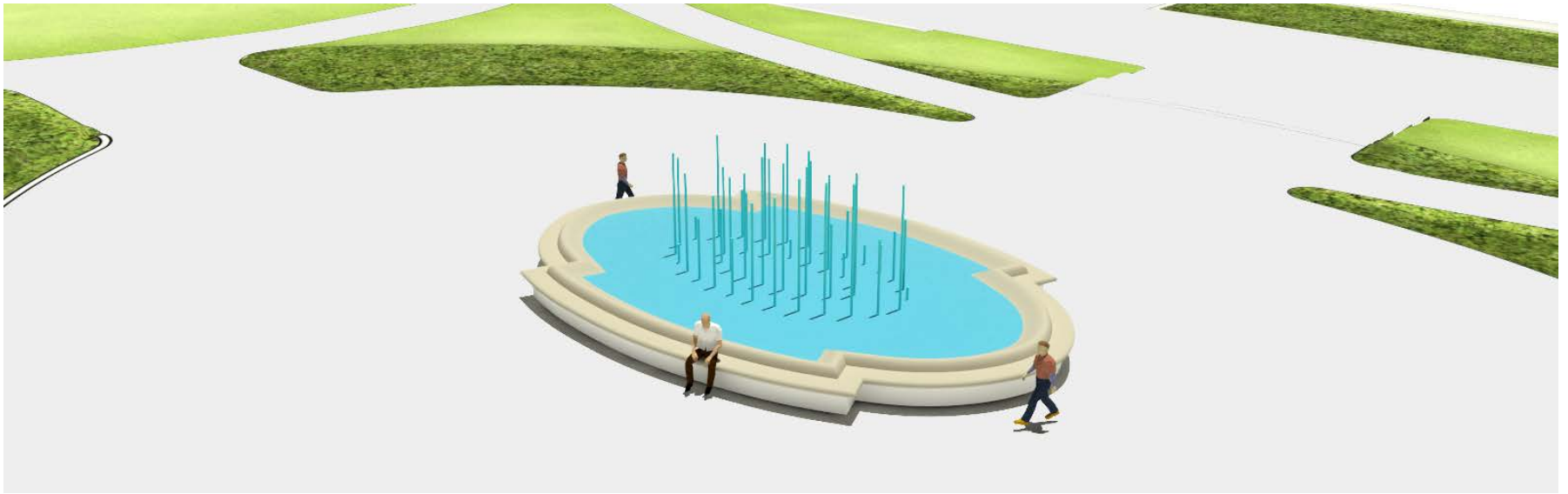
Design Goals:

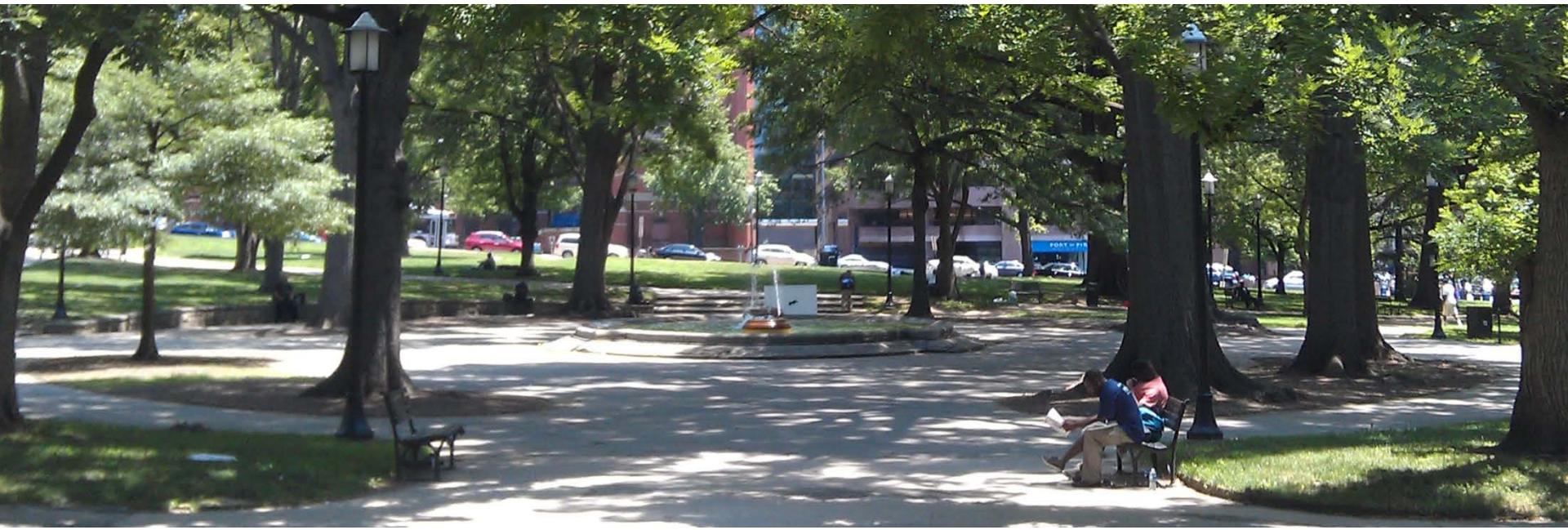
- Reuse historic coping/maintain form
- Make edge more engaging
- Bolder water display to draw in visitors





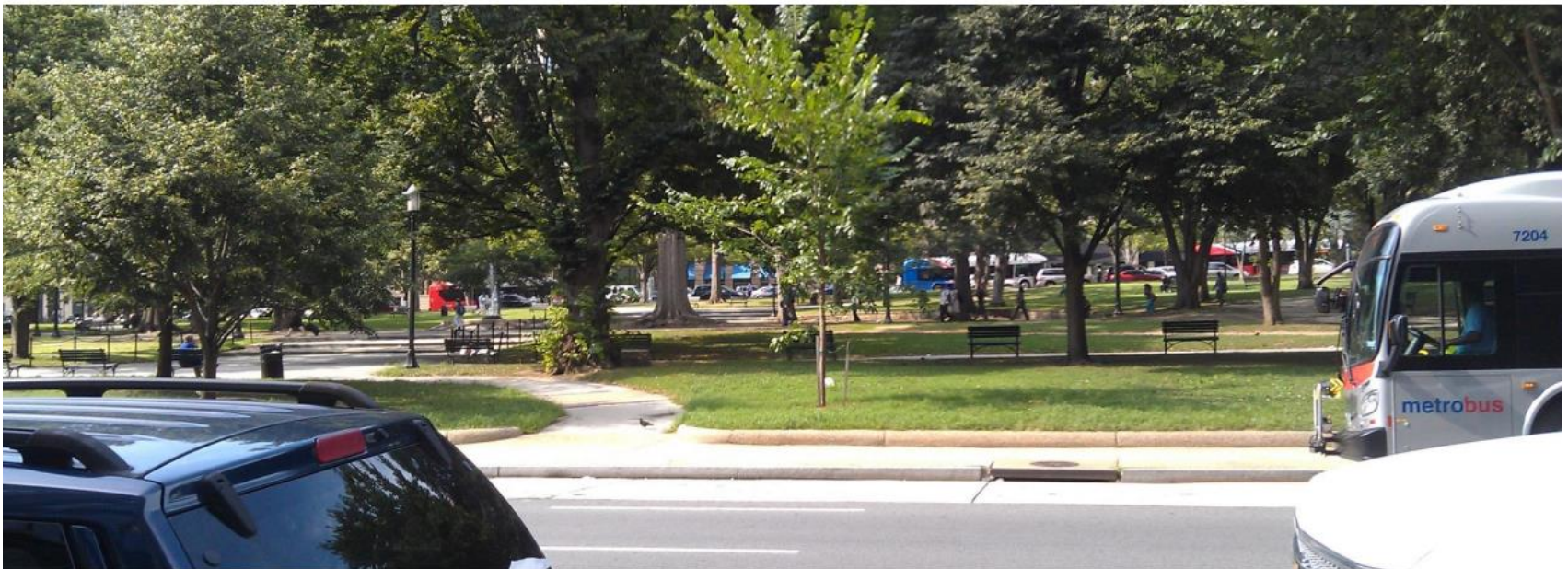
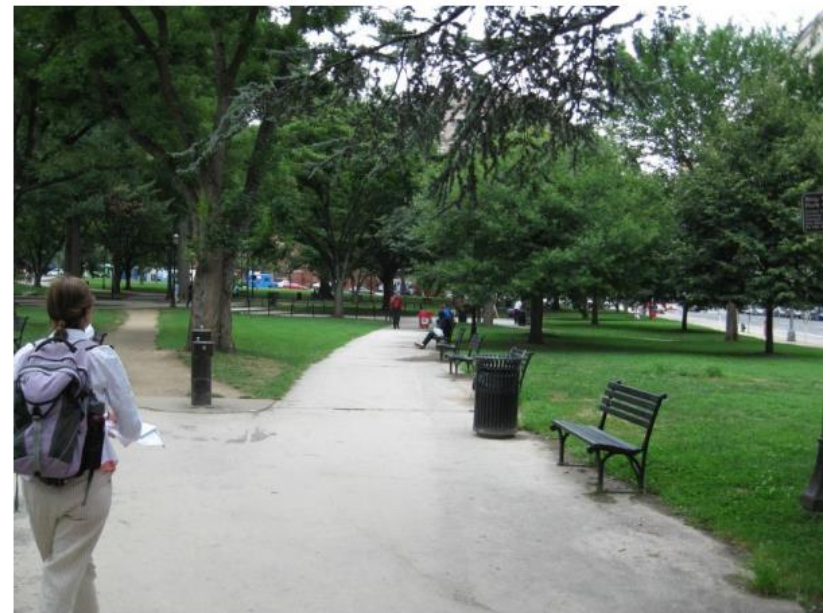
OLIN + ZGF







CAFÉ / RESTROOMS /
OPERATIONS

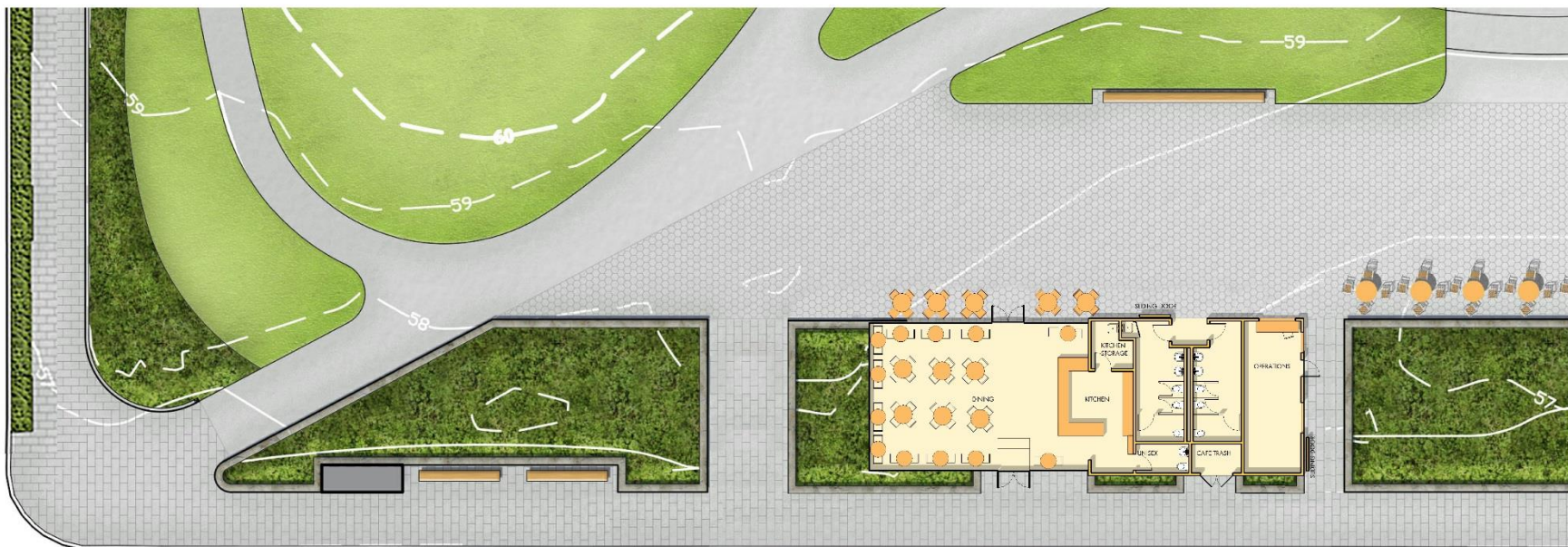




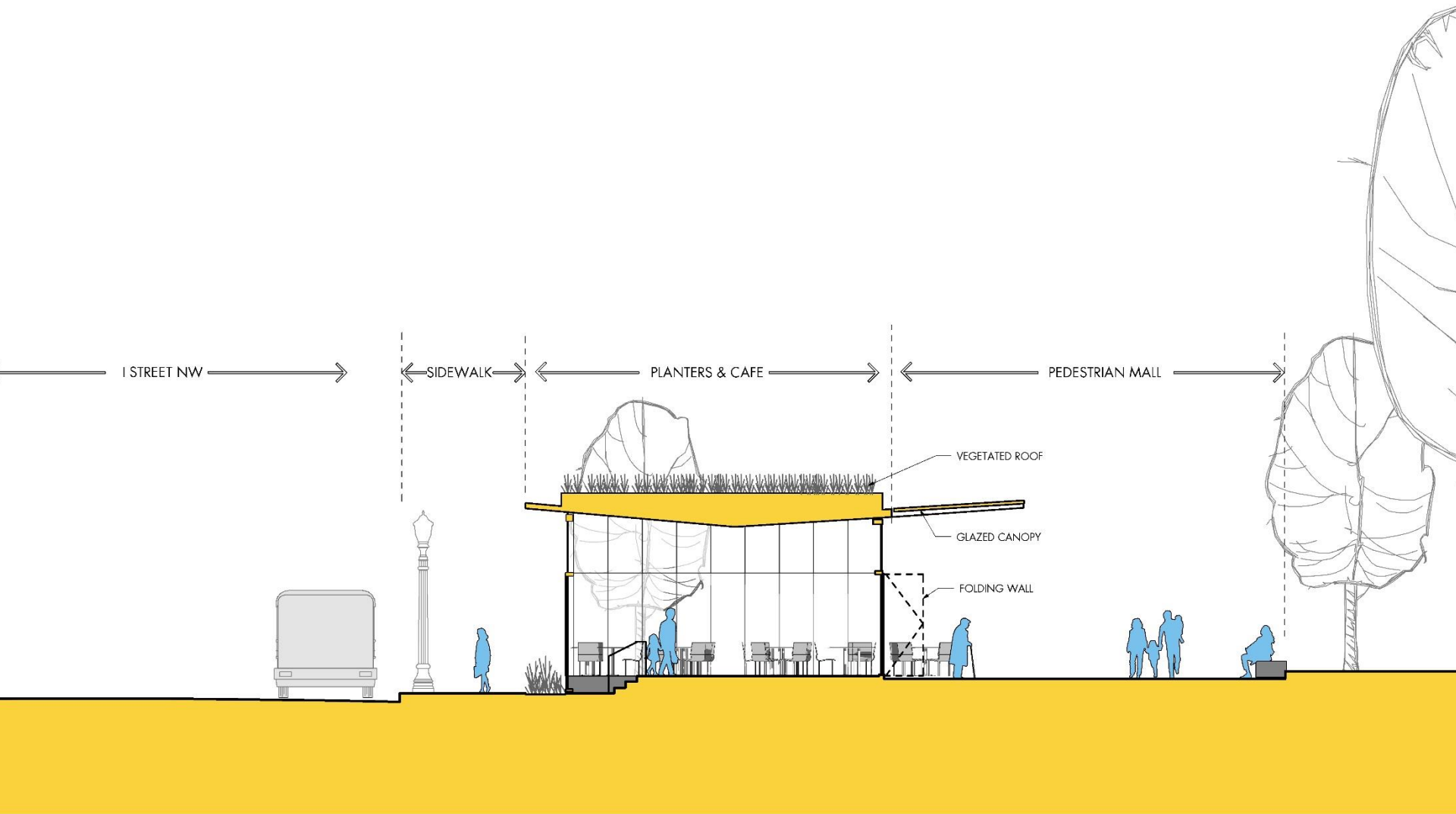
Design Goals:

- Scaled appropriately, maximize transparency, complement park activity, support 18 hour use
- 2 Conceptual Approaches (One Roof – Oblique)
- Focus toward the **Park** with acknowledgment of the Street
- The Building is **5 sided** – 4 Walls and the Roof
- **Contemporary** Use of Materials – Stone, Wood, Glass
- **Sustainability** Focus:
 - Integrated Stormwater and Landscape
 - Building is 4 Seasons, and Climate Responsive

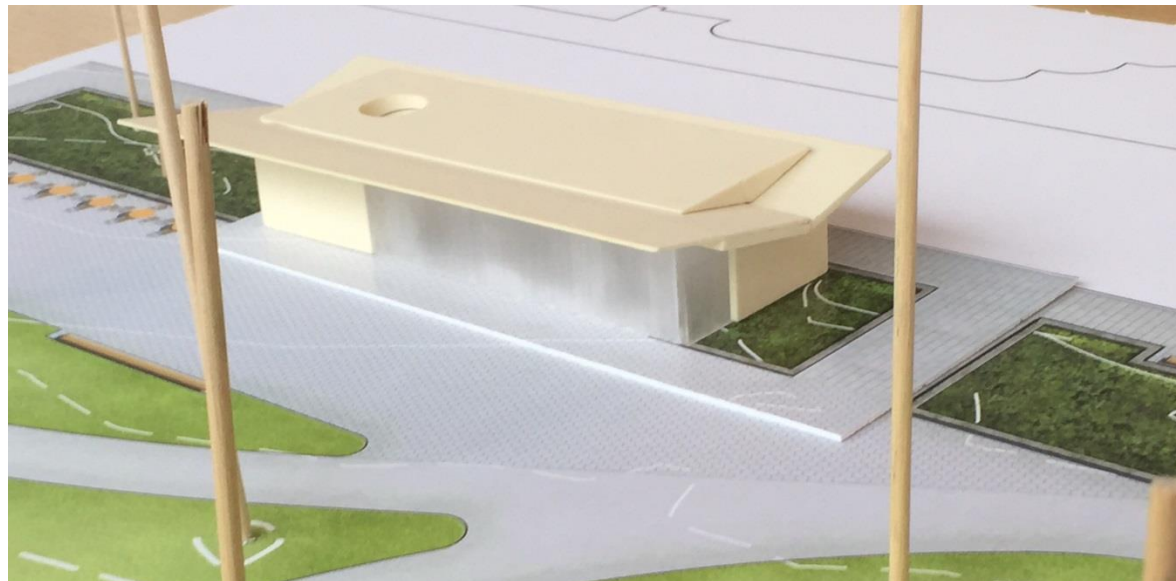
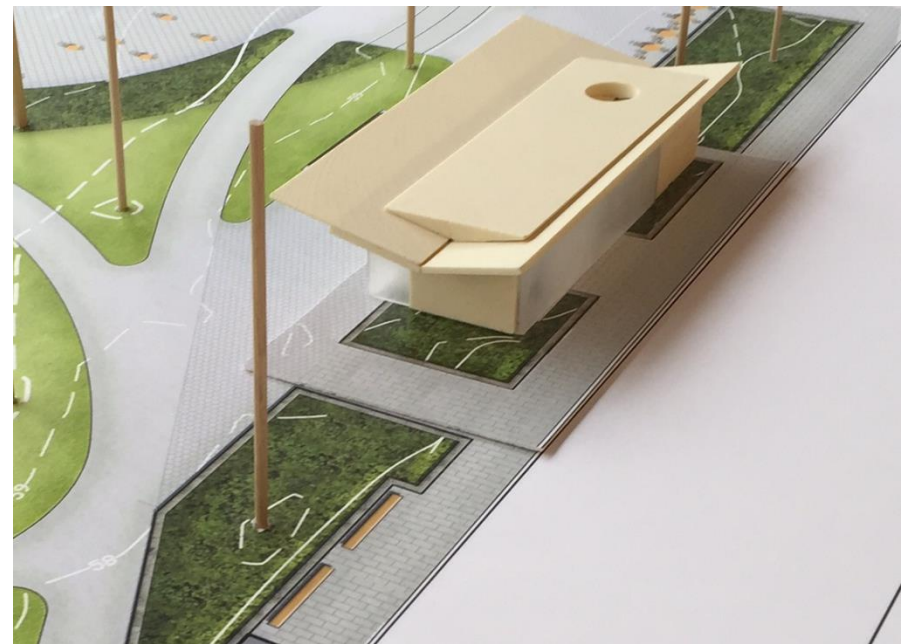
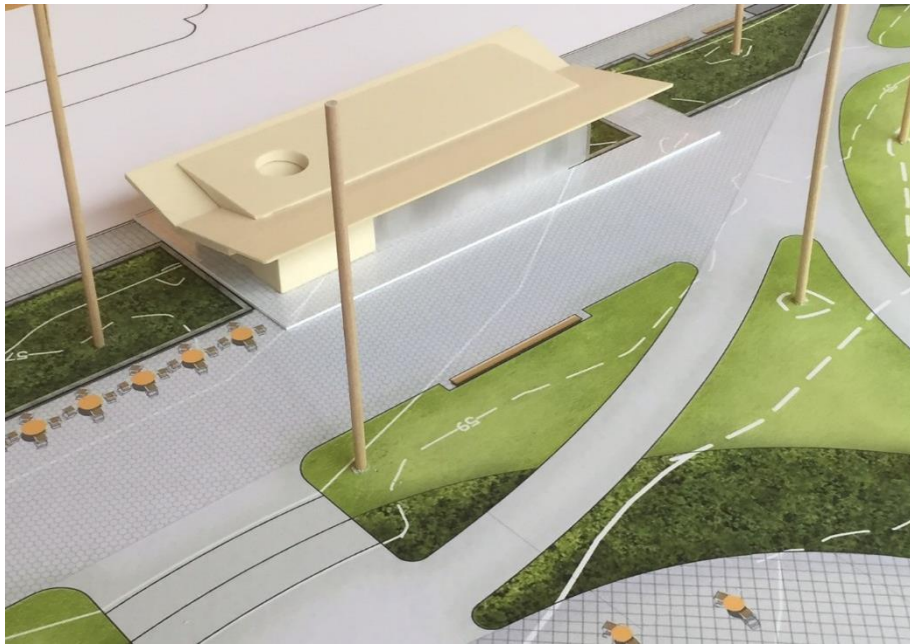


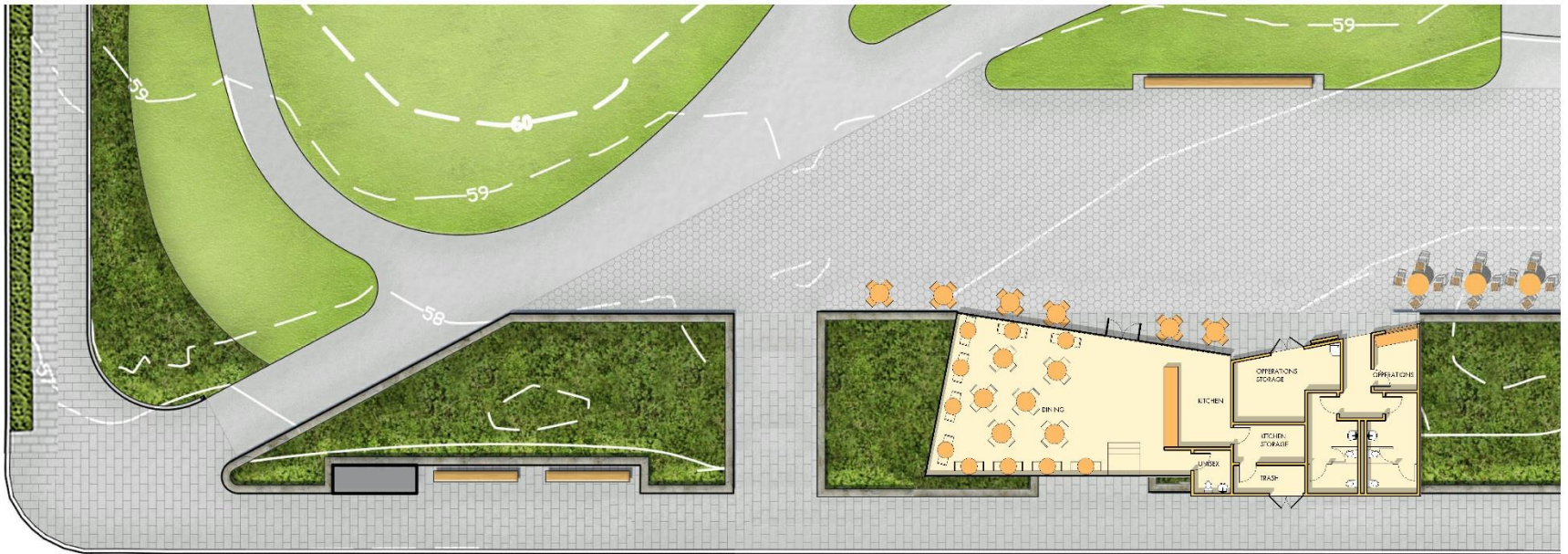


ONE ROOF – 2285 GSF
Café (+ Kitchen & Trash) – 1450 SF
Operations – 300 SF
Restrooms – 370 SF







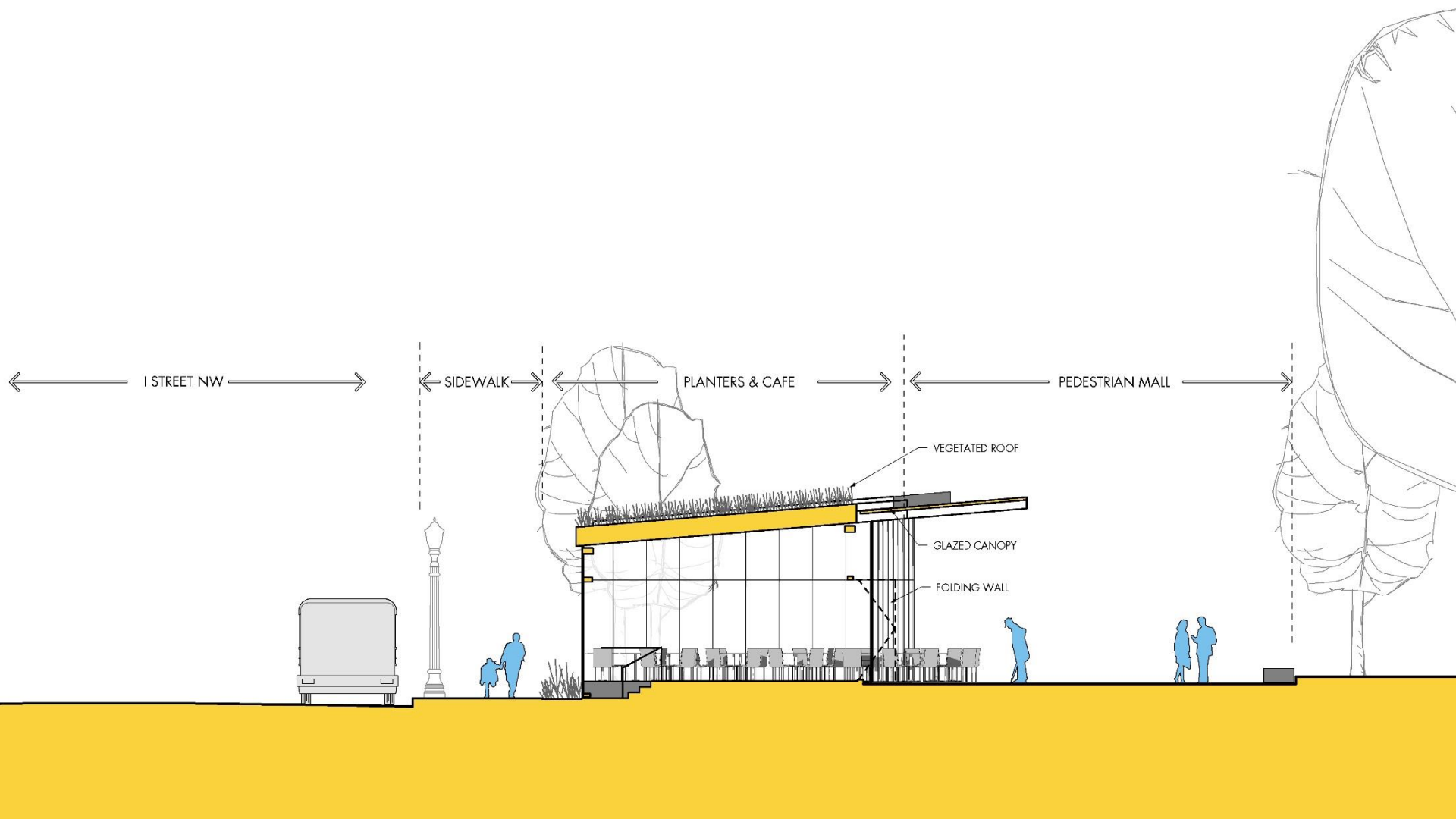


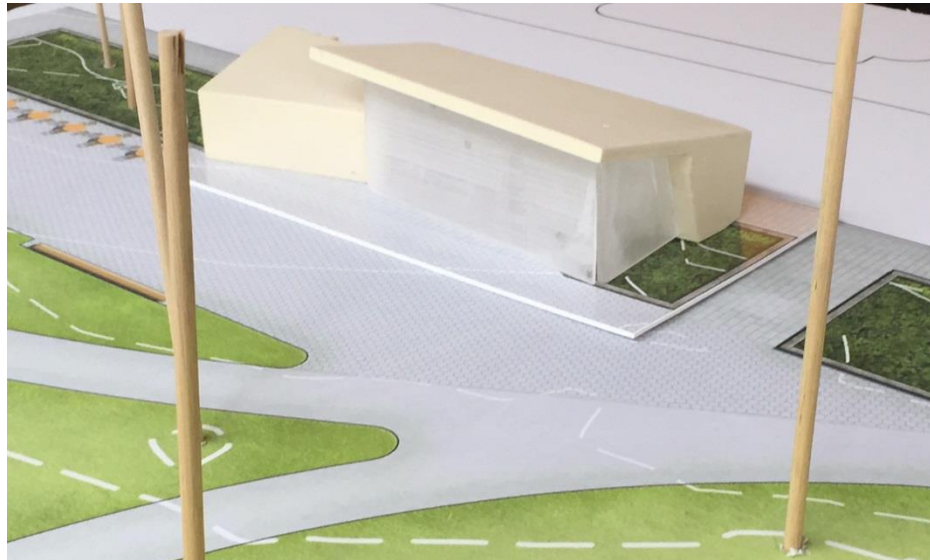
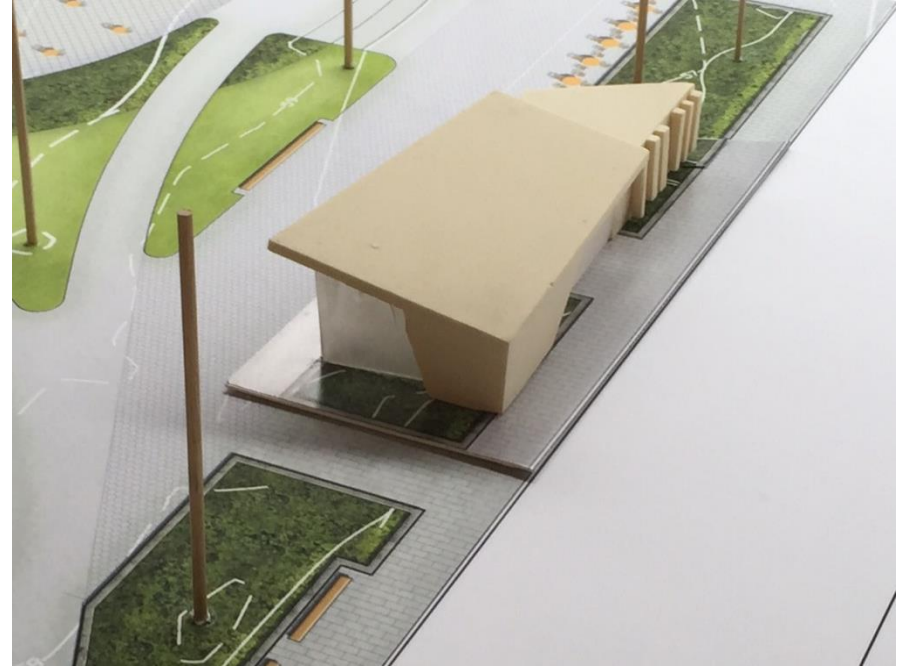
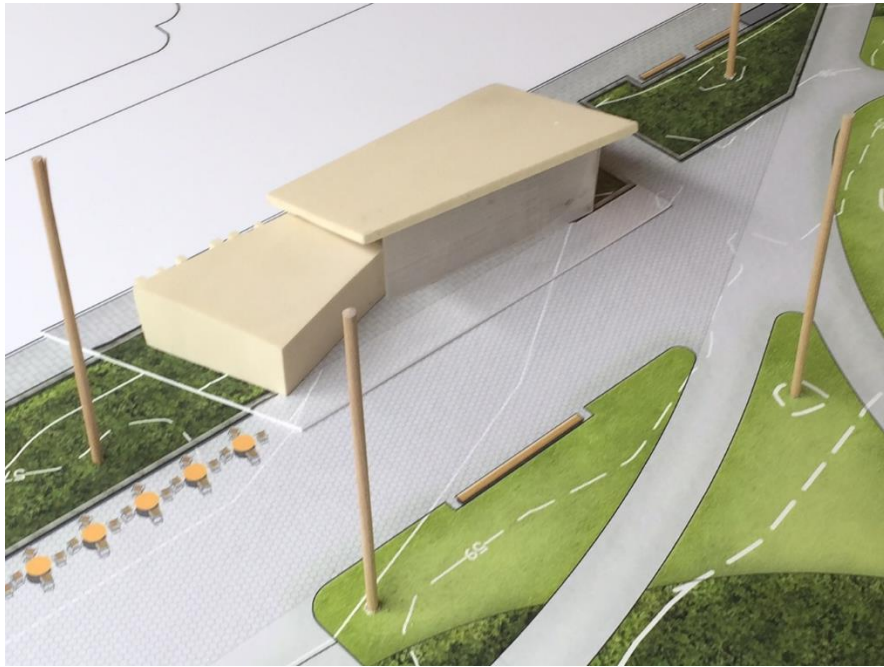
OBLIQUE – 2285 GSF

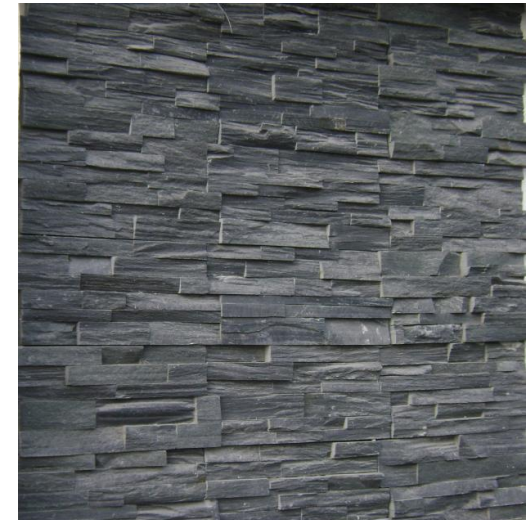
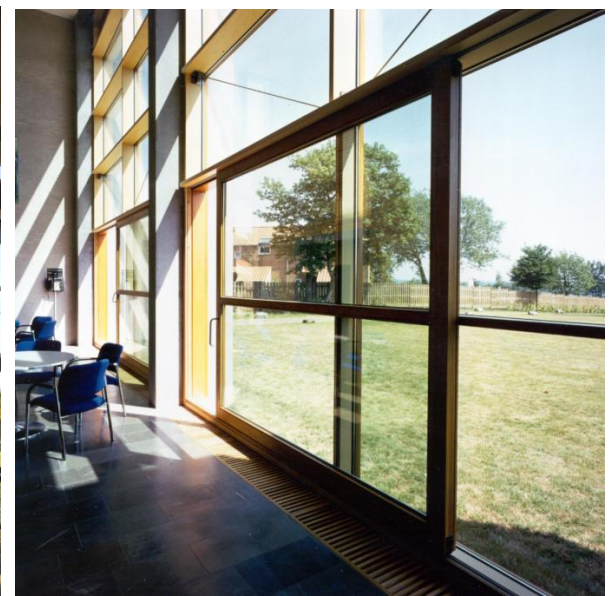
Café (+ Kitchen + Storage + Toilet+ Trash) – 1500 SF

Operations – 300 SF

Restrooms – 285 SF







DISCUSSION OF REVISED DRAFT MOA

NEXT STEPS

- Finalize MOA based on comments and discussion from this meeting
- Send final MOA to consulting parties for signature
- Finding of No Significance Impact (FONSI), if applicable
- Continued consultation as design progresses and as indicated in MOA