



REHABILITATION OF CONSTITUTION GARDENS

Section 106 Consulting Parties Meeting

3 June 2015



AGENDA

PRESENTATION

- WELCOME + INTRODUCTIONS
 - PURPOSE + NEED
- IDENTIFY HISTORIC RESOURCES
 - ALTERNATIVES
- ASSESSMENT OF EFFECTS

NEXT STEPS




PROJECT TEAM

NATIONAL PARK SERVICE

National Mall and Memorial Parks
National Capital Region
Denver Service Center
The Louis Berger Group

TRUST FOR THE NATIONAL MALL

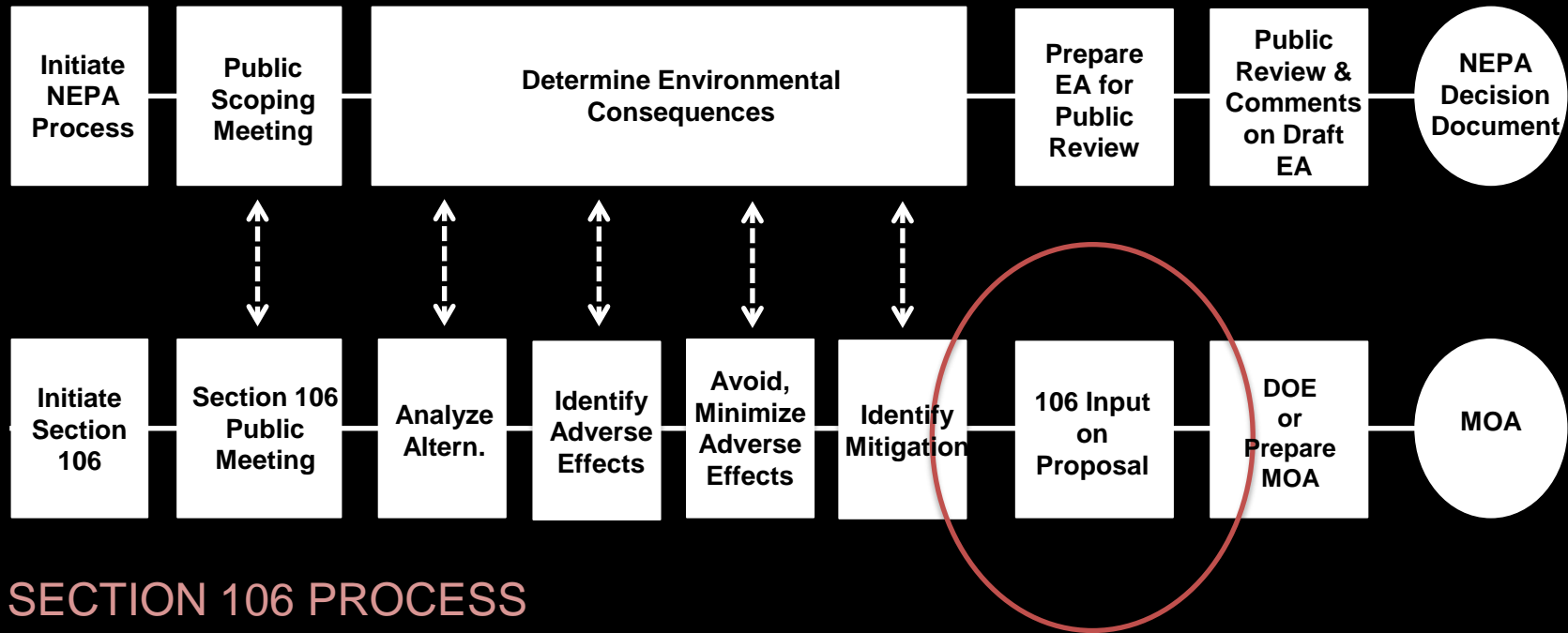
PWP Landscape Architecture
Rogers Partners
Davis Buckley Architects
Magnusson Klemencic Associates
Aquatic Design and Engineering
Buro Happold
Faithful and Gould

A black and white photograph of Constitution Gardens in Washington, D.C. The image shows a calm body of water in the foreground, with a dense line of trees and foliage in the background. A large tree branch hangs down from the top left corner. The right half of the image is overlaid with a semi-transparent dark grey rectangle containing white text.

Rehabilitate Constitution Gardens to improve the functionality, ecology, visitor services, and accessibility of the area. Specifically, this project will improve resource conditions and circulation; relocate the Canal Lockkeeper's House (Lockkeeper's House); and provide flexible opportunities for relaxation, entertainment, and recreation, as well as improved visitor service facilities.

PURPOSE + NEED

NEPA PROCESS



- Public Scoping Meeting 5.22.14
- Section 106 Consulting Parties Meeting 8.7.14

SEC. 106 UPDATE



CONSTITUTION GARDENS, THE NATIONAL MALL, WASHINGTON D.C

PROJECT AREA



PROJECT AREA



Poor water quality



Poor condition of
lockkeeper's house



Minimal visitor amenities,
education, & services



Poor pedestrian access
& circulations



Unhealthy trees

CURRENT CONDITIONS



WASHINGTON CANAL AND LOCKKEEPER'S HOUSE

HISTORICAL OVERVIEW



TRUST FOR THE
NATIONAL
MALL



SKIDMORE OWINGS AND MERRILL DESIGN FOR CONSTITUTION GARDENS

HISTORICAL OVERVIEW



AREA OF POTENTIAL EFFECT



Legend

- Individually Eligible Buildings of Interest
- Primary APE
- Secondary APE
- Constitution Gardens Cultural Landscape
- Pennsylvania Ave National Historic Site
- Northwest Rectangle HD
- National Mall HD

- East/West Potomac Parks HD
- Federal Triangle HD
- Seventeenth Street HD
- President's Park South
- Washington Monument & Grounds



Sources: ESRI; DC OCTO
Coordinate System:
NAD 1983 State Plane Maryland Feet

0 500 1,000 2,000
Feet





- Constitution Gardens is a contributing resource within two National Register districts (NRHP): East and West Potomac Parks District & L'Enfant Plan of the City of Washington District.
- Constitution Gardens cultural landscape has also been determined eligible for listing on the NRHP (SHPO Consensus Determination).
- Lockkeeper's House is individually listed on the NRHP

SIGNIFICANCE



- Border of trees
- Open central area
- Flood control levee
 - Gentle slopes
- Plateau at overlook terrace
 - Western knoll
- Low central area occupied by lake

SPATIAL ORGANIZATION & TOPOGRAPHY

CONTRIBUTING FEATURES



LANDUSE

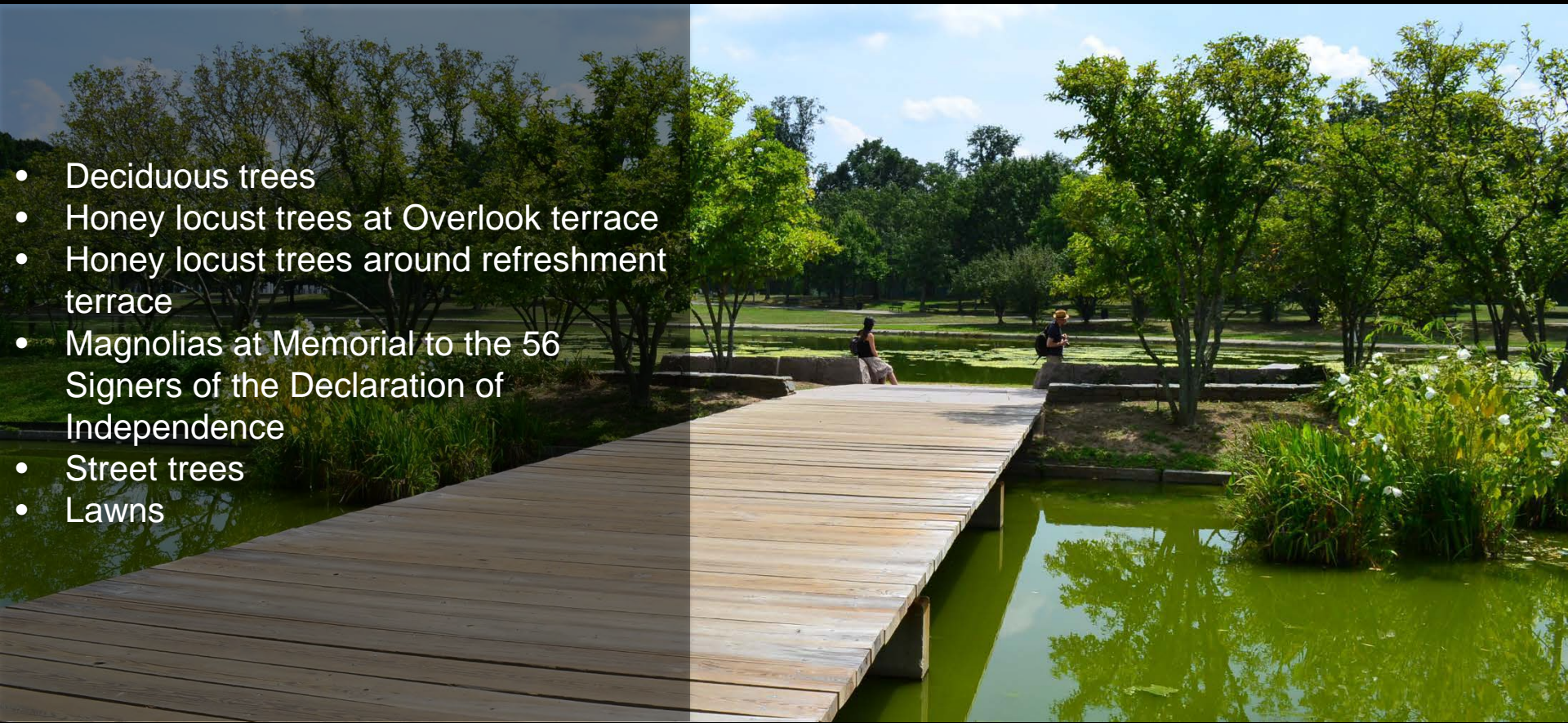
CONTRIBUTING FEATURES



- Overlook Terrace
- Loop walk around the lake
- Look walk around west end and the VVM
- Secondary walks over slopes
- Walks parallel to stairs
- Diagonal walk, northeast corner of Overlook terrace
- Two sidewalks along Constitution Avenue
- Sidewalk along 17th Street

CIRCULATION

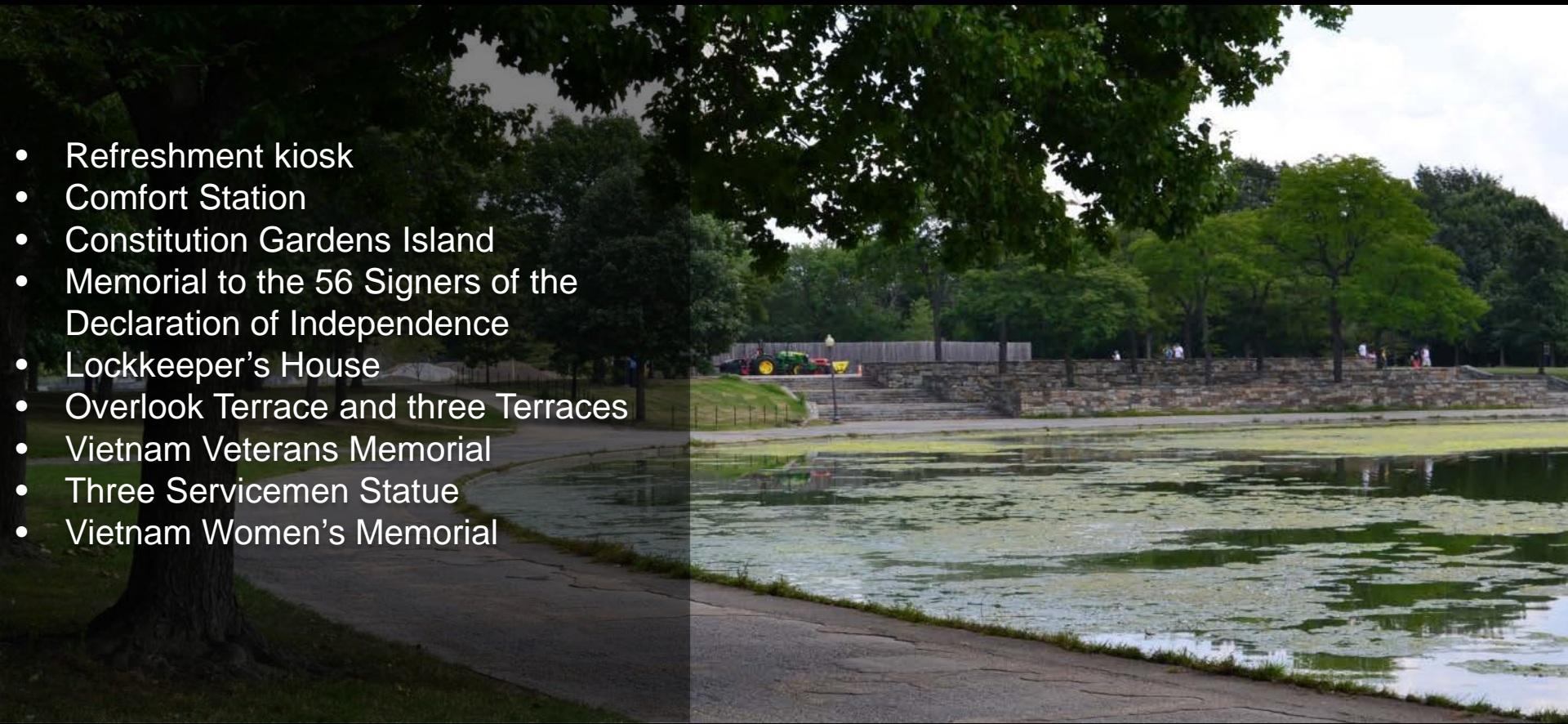
CONTRIBUTING FEATURES



- Deciduous trees
- Honey locust trees at Overlook terrace
- Honey locust trees around refreshment terrace
- Magnolias at Memorial to the 56 Signers of the Declaration of Independence
- Street trees
- Lawns

VEGETATION

CONTRIBUTING FEATURES

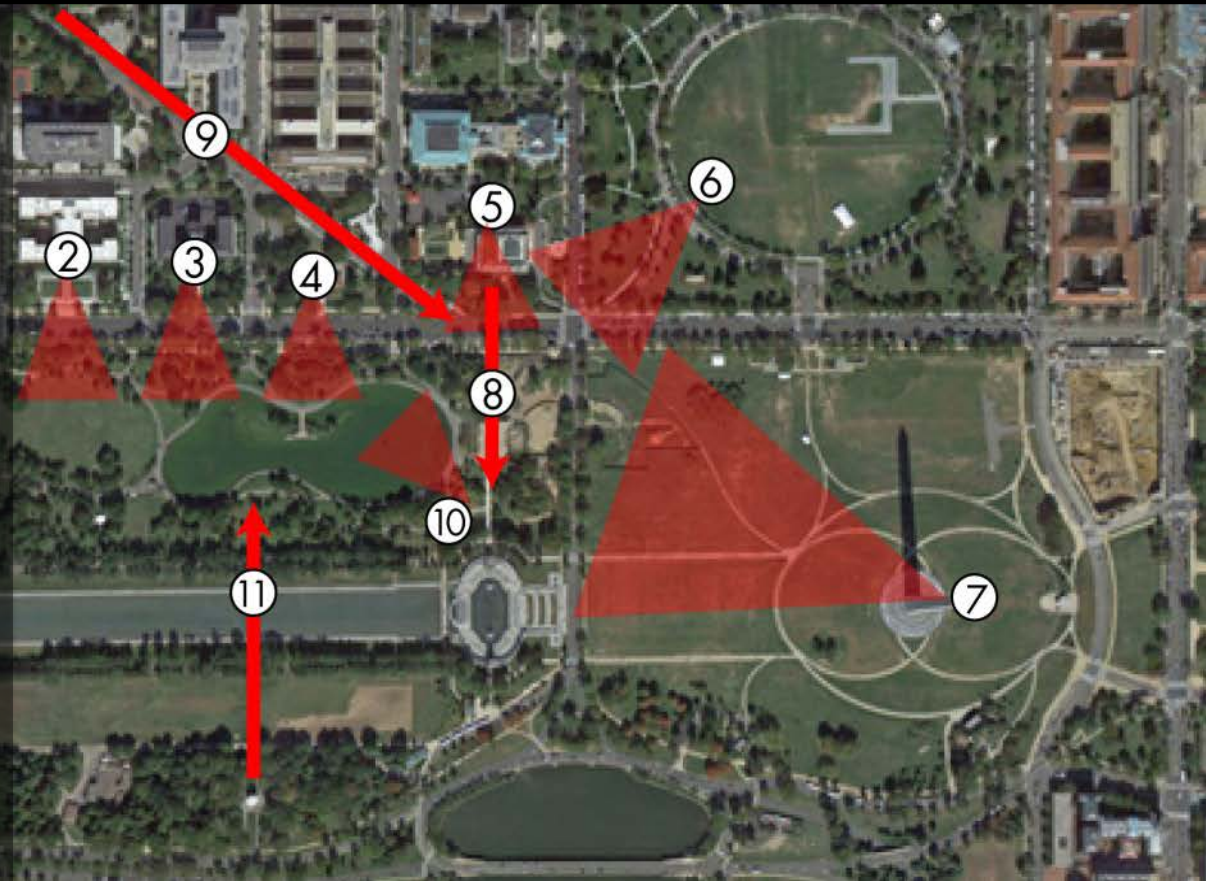


- Refreshment kiosk
- Comfort Station
- Constitution Gardens Island
- Memorial to the 56 Signers of the Declaration of Independence
- Lockkeeper's House
- Overlook Terrace and three Terraces
- Vietnam Veterans Memorial
- Three Servicemen Statue
- Vietnam Women's Memorial

BUILDINGS AND STRUCTURES

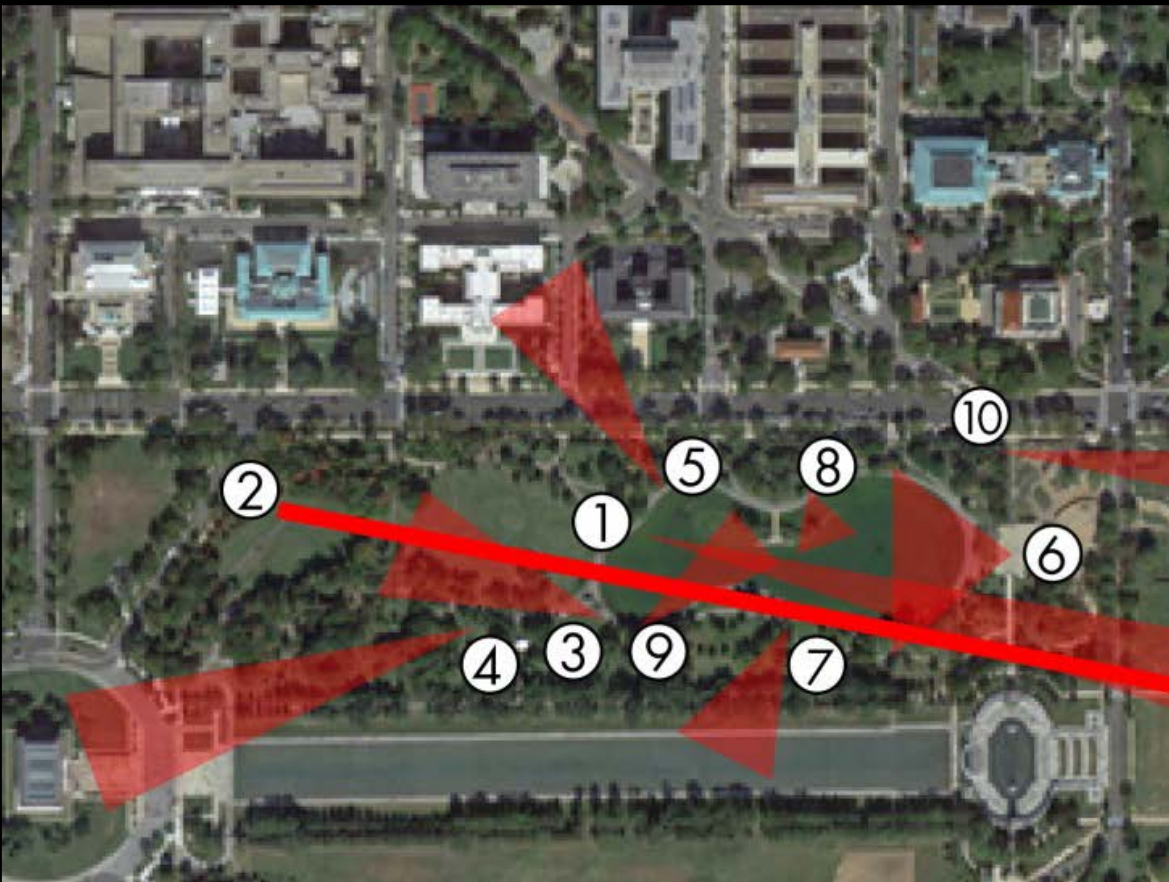
CONTRIBUTING FEATURES

- Vistas from Lincoln Memorial (1)
- View from Federal Register Bank Headquarters (2)
- Views from Department of the Interior South (3)
- View from Pan American Annex (4)
- View from the Organization of American States (5)
- View to Lockkeeper's House (7)
- Vista from Washington Mon (8)
- View from Virginia Ave (9)
- View from WWII Memorial (10)
- View from DC War Memorial (11)



VIEWS AND VISTAS

CONTRIBUTING FEATURES



- Vistas from Park to Washington Monument (1)
- Vista from VVM to Washington Monument (2)
- Views to reflecting pool area (3)
- Vistas to Lincoln Memorial (4)
- Views to buildings north of Constitution Avenue (5)
- Views from Overlook Terrace (6)
- Views to reflecting pool area (7)
- Internal views to lake (8)
- Internal views to island (9)
- Views from Lockkeepers house to National Museum of African American History and Culture (10)

VIEWS AND VISTAS

CONTRIBUTING FEATURES

- Constitution Gardens Lake
- Cast iron and wood-slat benches
- Lighting
- Washington City Canal Memorial Stone and plaque and mounting block
- VVM Memorial Flagpole, In Memory Plaque, lighting fixtures and locations



CONSTRUCTED WATER FEATURES & SMALL-SCALE FEATURES

CONTRIBUTING FEATURES

ALTERNATIVES

ALTERNATIVE 1-SUSTAINABLE GARDEN

ALTERNATIVE 2-SOCIAL GARDEN

PREFERRED ALTERNATIVE-REGENERATIVE GARDEN



SUSTAINABLE GARDEN

ALT. 1

The Sustainable Garden radically rehabilitates Constitution Gardens to more sharply focus on sustainability and an ecologically functioning environment, with greater planting diversity—meadows, lawns, understory, tree canopy, and aquatic vegetation



Topography

- Increased (amplified) to about 10 feet; 30" stone wall would edge the gardens along 17th and Constitution Avenues.

Circulation

- Walks resurfaced, reconfigured slightly; double entry walks; revised walks near Vietnam Veterans Memorial; improved accessibility for all visitors

Vegetation

- The majority of trees (95%+/-) would be removed. Vegetation would include a diverse mix of shade and understory flowering trees with low woodland plants. Unmown meadows would replace most lawns.

Building and Structures

- West end concession stand removed
- Multi-purpose Pavilion constructed
- Lockkeeper's House (350 SF) relocated 30-50 feet SW and rehabilitated for public use, with (1,000SF) basement for public use
- 56 Signers of the Declaration of Independence walks and planting rehabilitated

Views and Vistas

- Vistas from the park to the Washington Monument and buildings along the north of Constitution Ave. would be altered by the raised topography and in the case of the Washington Monument, the inclusion of the pavilion.
- Views within the park, such as the view from Overlook Terrace, would be changed by the removal of the feature.

Constructed Water Features

- Lake deeper (up to 12'); shallow concrete lined lake ring for recreation; separate water source
- Integrated water management using non-potable water sources

Small-Scale Features

- Washington Mall Benches – updated to meet accessibility standards
- Washington Globe light fixtures used
- Mounting block reused
- New exterior exhibits and pedestrian wayfinding system incorporated

EFFECTS

ALT. 1



ALT. 2

The Social Garden would rehabilitate Constitution Gardens as a better place for people, providing a sustainable but more flexible social environment with greater planting diversity than currently exists, primarily lawns and tree canopy with some meadows, and understory



Topography

- Increased approx. 6 feet higher than existing in some areas and soil would be reengineered to improve growing conditions; 18" stone wall would edge the gardens along 17th and Constitution Avenues.

Circulation

- Walks resurfaced, reconfigured slightly; double entry walks; revised walks near Vietnam Veterans Memorial; improved accessibility for all visitors.

Vegetation

- Trees in good and fair conditions would be preserved to the extent possible (70-85%); Trees in poor condition or in locations where facilities would be constructed would be removed.

Building and Structures

- West end concession stand adaptively reused
- Multi-purpose Pavilion constructed
- Lockkeeper's House (350 SF) relocated 500 feet SW and rehabilitated for public use, with (500SF) basement for public use and restrooms
- 56 Signers of the Declaration of Independence walks and planting rehabilitated

Views and Vistas

- Vistas from the park to the Washington Monument and buildings along the north of Constitution Ave. would be altered by the raised topography and in the case of the Washington Monument, the inclusion of the pavilion.
- Views within the park, such as the view from Overlook Terrace, would be changed by the removal of the feature.

Constructed Water Features

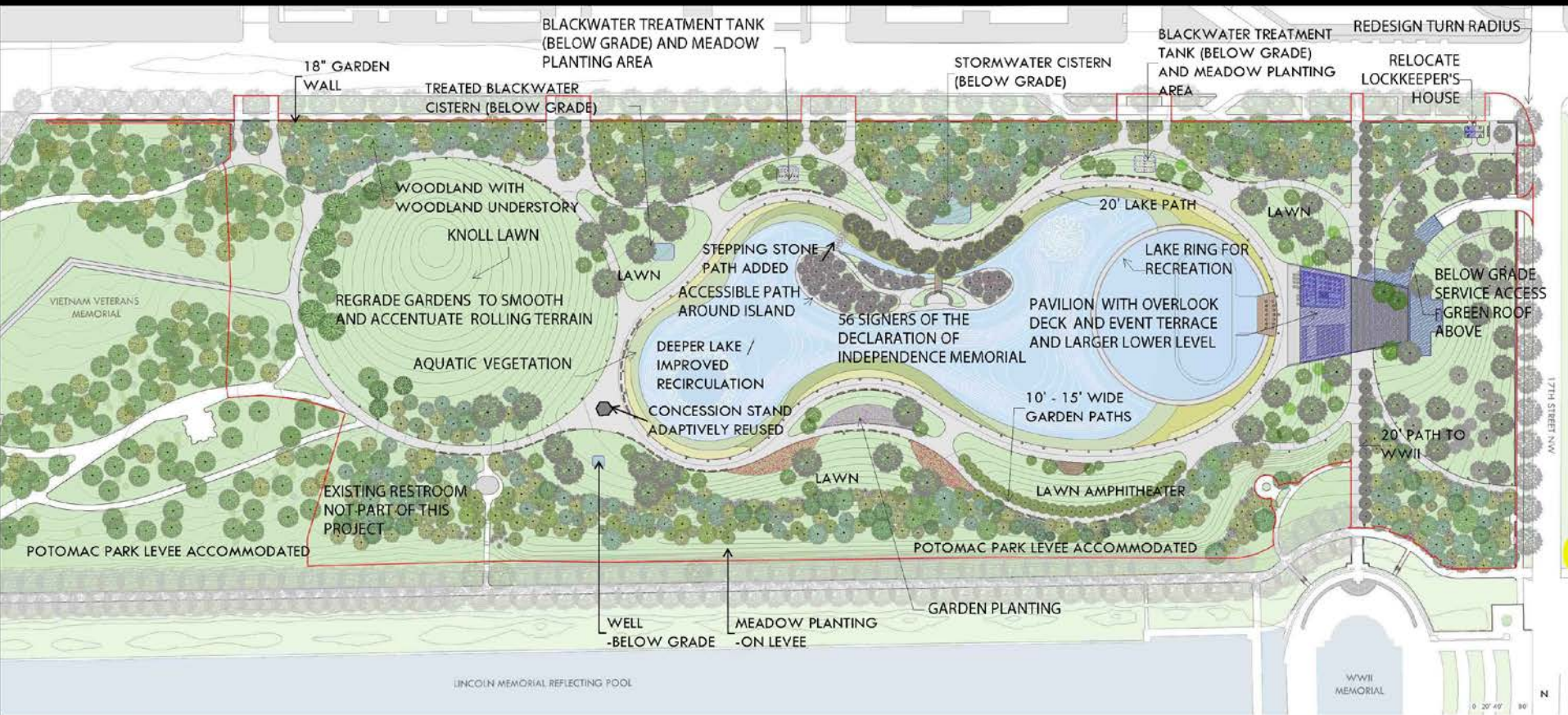
- Lake deeper (up to 12'); shallow concrete lined lake ring for recreation; separate water source
- Integrated water management using non-potable water sources

Small-Scale Features

- Washington Mall Benches – updated to meet accessibility standards
- Washington Globe light fixtures used
- Mounting block reused
- New exterior exhibits and pedestrian wayfinding system incorporated

EFFECTS

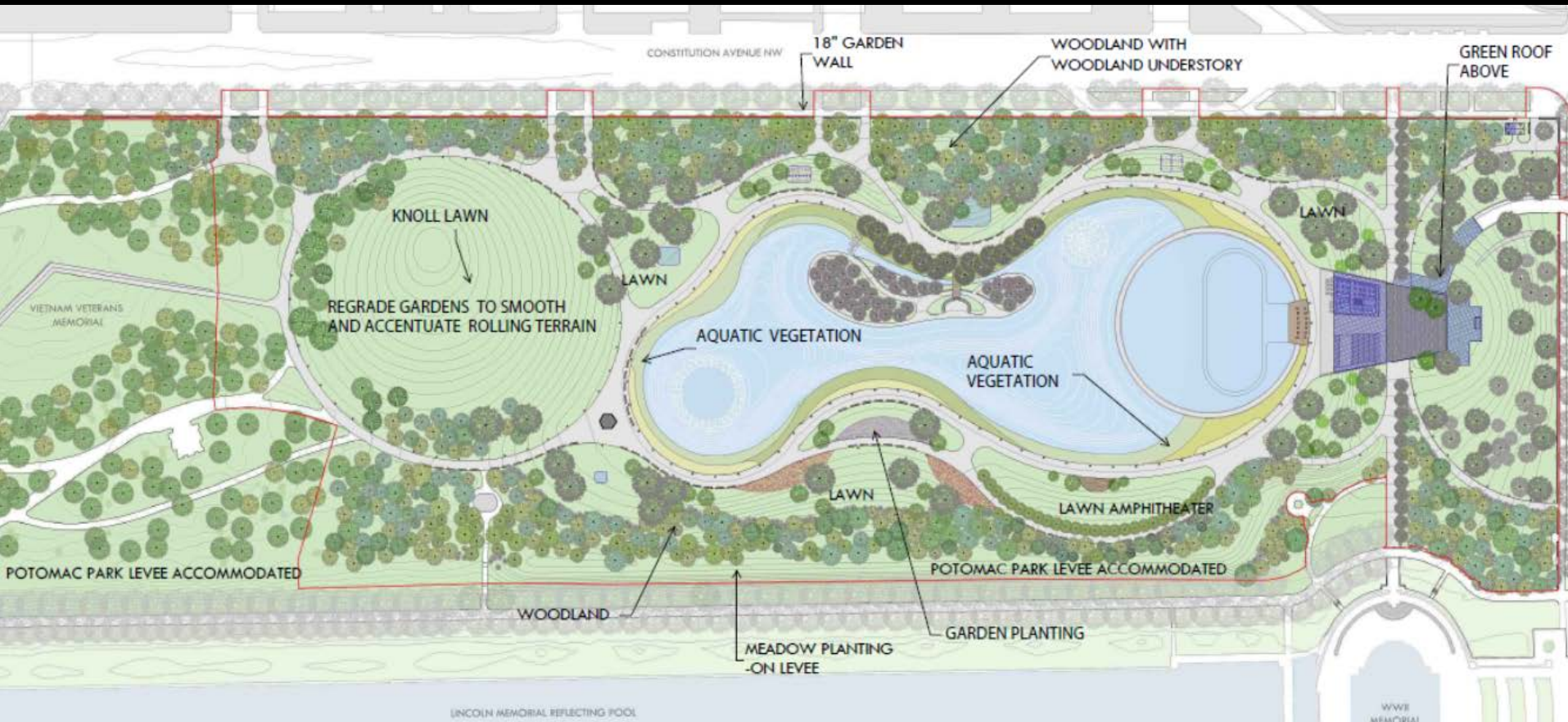
ALT. 2



REGENERATIVE GARDEN

The Regenerative Garden (Preferred Alternative) would rehabilitate Constitution Gardens to improve sustainability and social spaces. The rehabilitation would include greater planting diversity and a mix of lawns and trees canopy with meadows and understory.

PREFERRED



Topography

- Regraded to even out irregularities, smooth out and accentuate gently rolling hills while improving soil conditions and drainage; 18" stone wall would edge the gardens along 17th and Constitution Avenues.

Vegetation

- Trees in good and fair conditions would be preserved to the extent possible (70-85%); Trees in poor condition or in locations where facilities would be constructed would be removed.

EFFECTS

PREFERRED



Spatial Organization

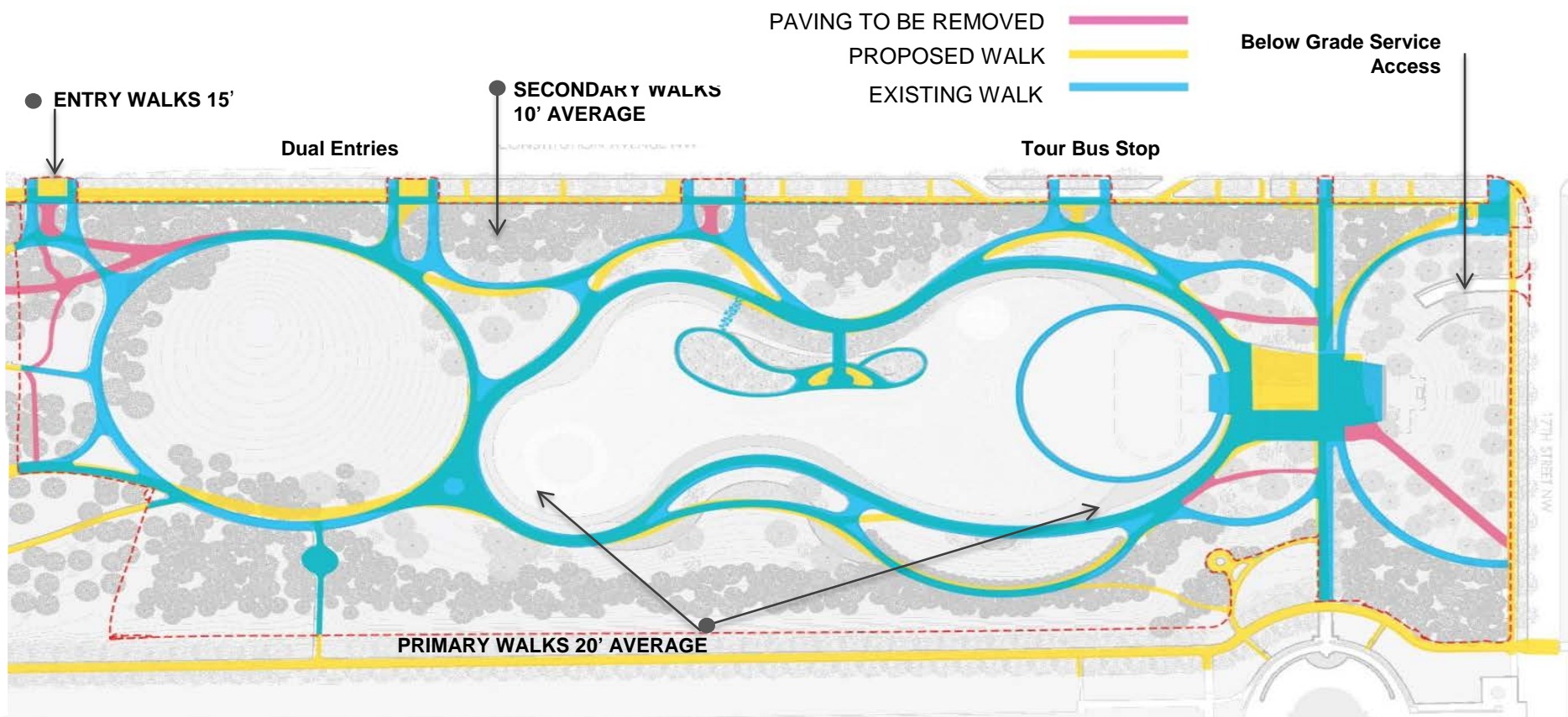
- Border of street trees remain; open central area remains

Land Use

- Passive recreation continues; visiting memorials continues; ceremonies and demonstrations continue
- Catch and release fishing from lake edge, island, and walk around lake ring

EFFECTS

PREFERRED



Circulation

- Walks resurfaced, reconfigured slightly; double entry walks; revised walks near Vietnam Veterans Memorial; improved accessibility for all visitors; additional access to Signers Island and lake ring
- Below grade access for Pavilion delivery; emergency and operational access remain on walks

EFFECTS

PREFERRED



EFFECTS

Buildings and Structures

- West end concession stand adaptively reused
- Multi-purpose Pavilion constructed; overlook terrace would be removed.

PREFERRED

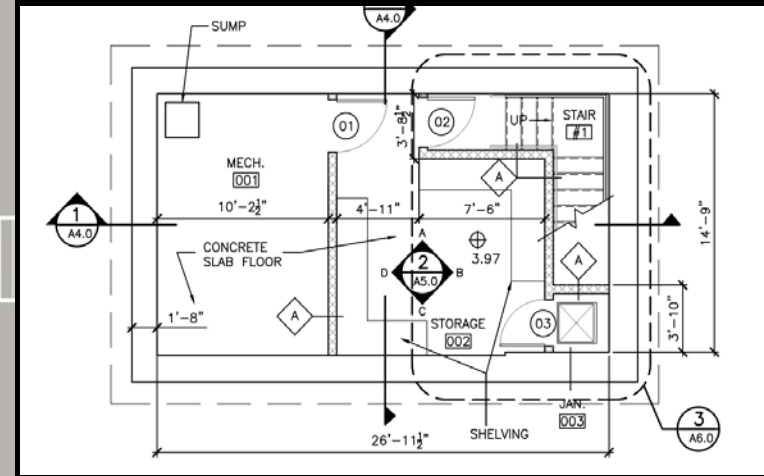
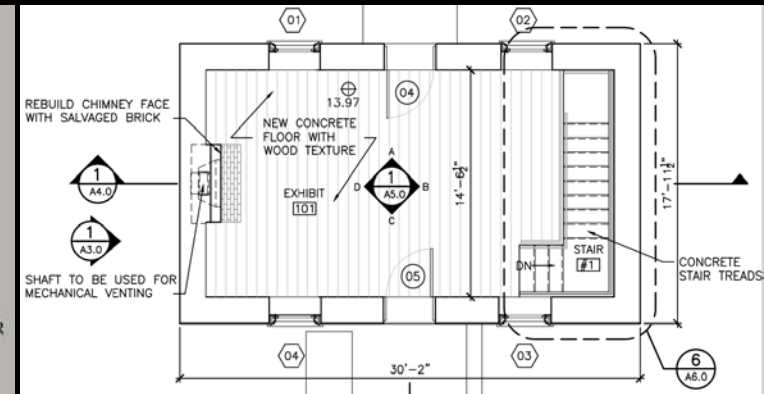
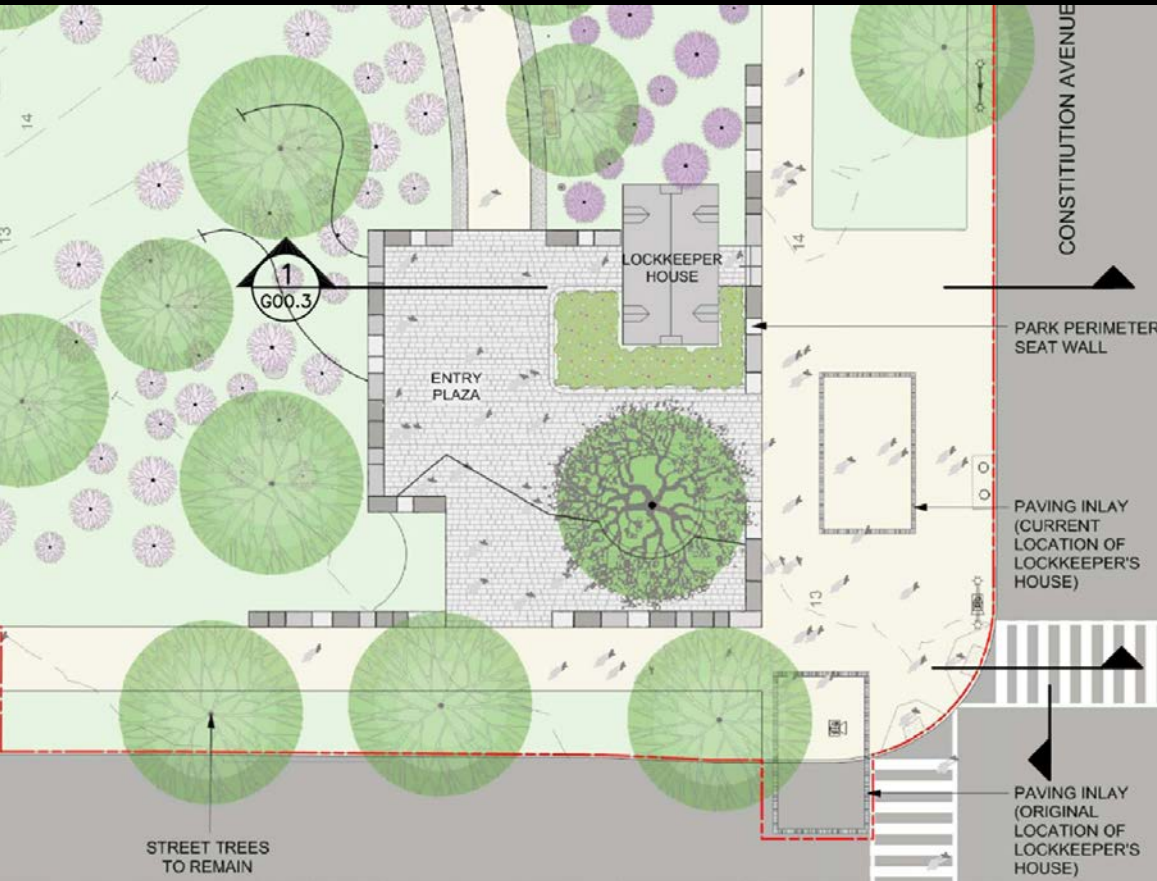


Buildings and Structures

- Pavilion would include a restaurant/bar on the upper level and would have an outdoor space for tables and chairs. The lower walkout would include public restrooms, refreshment stand with outdoor space. Access between levels would be provided by elevator, walkways, and a wide staircase.

EFFECTS

PREFERRED



Buildings and Structures

- Lockkeeper's House (350 SF) relocated 5 ' west and 18' south and rehabilitated for public use, with basement for mechanical and storage

EFFECTS

PREFERRED

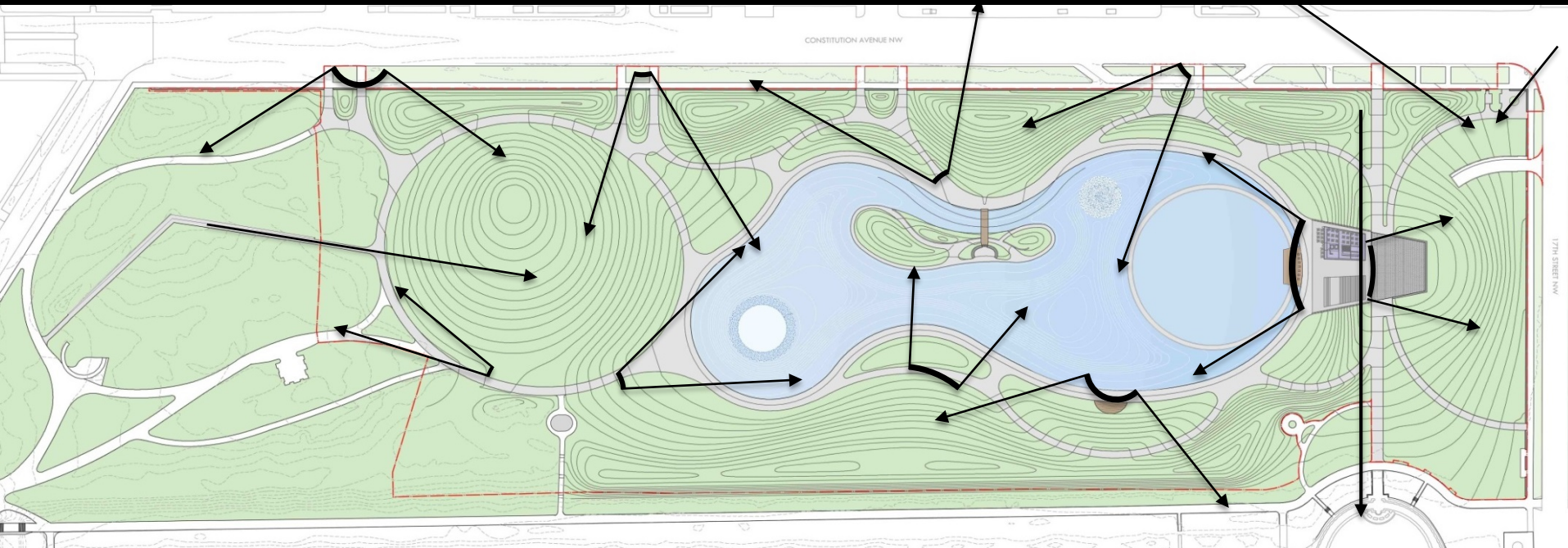


Buildings and Structures

- Lockkeeper's House would be adaptively reused for public purposes such as visitor education and donor recognition.
- 56 Signers of the Declaration of Independence walks and planting rehabilitated

EFFECTS

PREFERRED



EFFECTS

Views and Vistas

- Vistas from the park to the Washington Monument and buildings along the north of Constitution Ave. would be altered by the raised topography and in the case of the Washington Monument, the inclusion of the pavilion.
- Views within the park, such as the view from Overlook Terrace, would be changed by the removal of the feature.

PREFERRED



Views and Vistas

EFFECTS

- View into Constitution Garden along Constitution Avenue

PREFERRED

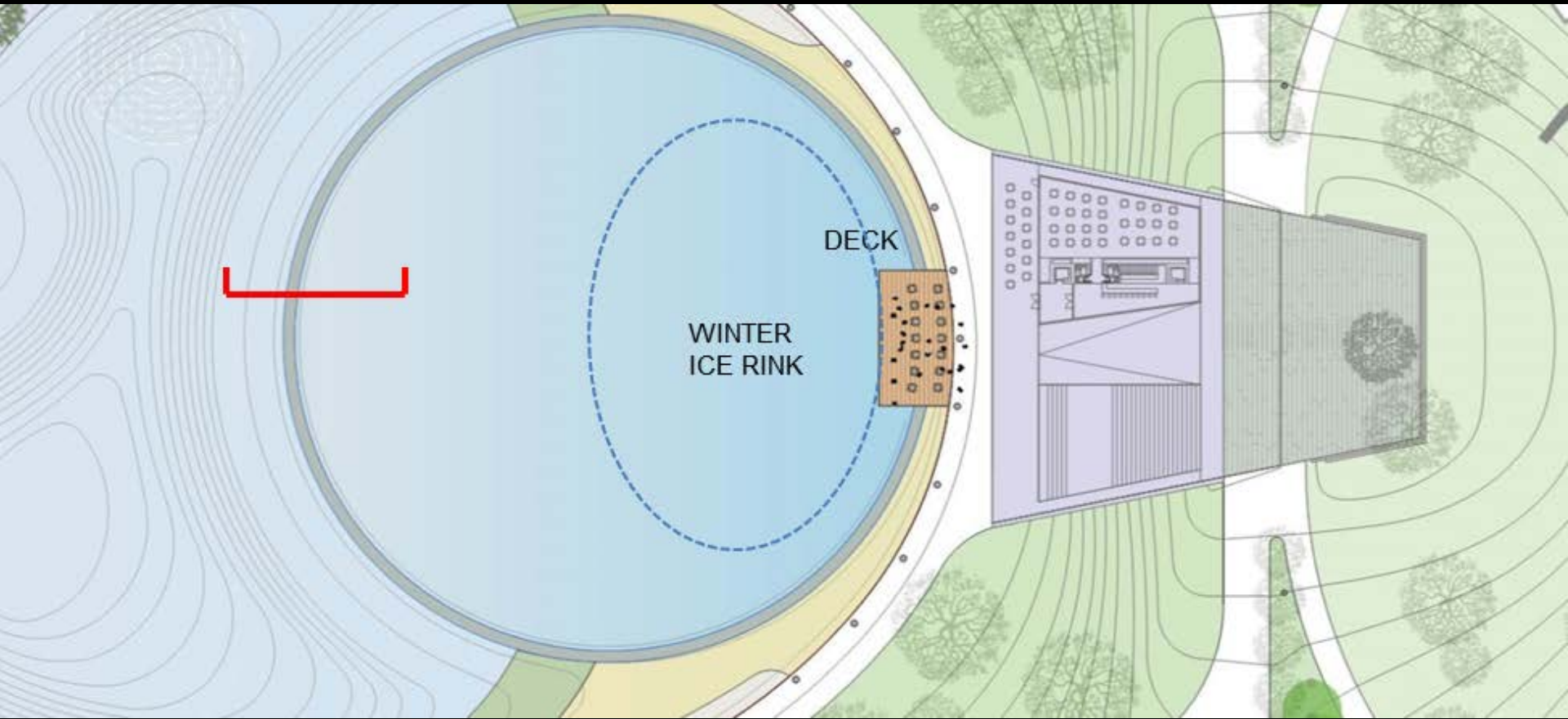


Views and Vistas

- View to WWII Memorial from Constitution Avenue

EFFECTS

PREFERRED



Constructed Water Features

- Lake deeper (up to 12'); lake ring for recreation shallow concrete lined; aquatic vegetative edge

Small-Scale Features

- Washington Mall Benches – updated to meet accessibility standards
- Washington Globe light fixtures used; mounting block reused
- New exterior exhibits and pedestrian wayfinding system incorporated

EFFECTS

PREFERRED



NEXT STEPS

- SECTION 106 INPUT
 - FINALIZE DETERMINATION OF EFFECT
 - PREPARE MOA, IF NEEDED
- SEND MOA TO CONSULTIES PARTIES FOR SIGNATURE
- CONTINUED CONSULTATION AS DESIGN PROGRESSES



OPPORTUNITIES TO COMMENT

Please submit comments at:
www.parkplanning.nps.gov/COGA

or mail to:

ATTN: Constitution Gardens Rehabilitation
Superintendent, National Mall and Memorial Parks
900 Ohio Drive, SW Washington, DC 20024