



United States Department of the Interior

NATIONAL PARK SERVICE
National Mall and Memorial Parks
900 Ohio Drive, S.W.
Washington, D.C. 20024-2000



July 20, 2015

Ms. Nekole Alligood
Cultural Preservation Director
Delaware Nation
P.O. Box 825
Anadarko, OK 73005

Subject: Tribal consultation for the Benjamin Banneker Park Pedestrian Access Improvements Project

Dear Ms. Alligood,

The National Park Service (NPS), in cooperation with the National Capital Planning Commission (NCPC), is proposing an improved pedestrian connection between the National Mall and Memorial Parks (NAMA) and the waterfront along Maine Avenue, SW in Washington, DC, as identified in the *SW Ecodistrict Plan* and the *National Mall Plan*. The proposed connection includes the construction of a temporary stairway and ramp between the overlook at Benjamin Banneker Park (Banneker Overlook), a NPS property, and the southwest waterfront near the Hoffman Madison Waterfront LLC (the Wharf) redevelopment (Attachment 1). The Wharf is implementing the improved pedestrian connection in fulfillment of a zoning requirement. The temporary project also includes landscaping, improvements to pedestrian crosswalks, lighting installation, universal accessibility, and stormwater management. Anticipated future redevelopment along 10th Street, SW, as envisioned in the *SW Ecodistrict Plan*, will necessitate the design of a permanent connection, which will require additional National Environmental Policy Act of 1969 (NEPA) and the National Historic Preservation Act (NHPA) Section 106 processes at a later date.

The purpose of the proposed stairway and ramp is to provide a safe, functional, and aesthetically pleasing pedestrian connection between the Banneker Overlook and the southwest waterfront. The project is needed to improve urban connectivity by providing greater accessibility between the waterfront, Benjamin Banneker Park, the National Mall, and surrounding areas. The NPS will prepare an Environmental Assessment (EA) for the project that documents the analysis of environmental impacts of several alternatives in accordance with NEPA and other applicable laws, regulations, and policies. NCPC has been identified as a cooperating agency. Concurrently, the NPS and NCPC will conduct consultation

under Section 106 of the NHPA and NCPC will review and approve the project under its authorities set forth by the National Capital Planning Act.

The NPS and NCPC are presenting two potential concepts for the improved pedestrian connection (Attachments 2 and 3); however, based on public feedback, the project team may identify and evaluate additional or modified alternatives in the EA.

The NPS and NCPC wish to formally initiate consultation with the Delaware Nation on the proposed pedestrian access improvements project in compliance with Section 106 of the National Historic Preservation Act and its implementing regulations. The NPS understands that the Delaware Nation has an interest in the preservation of Native American cultural resources of significance in this region of the country. While no pre-contact or contact period archeological sites with Native American components have been identified at Banneker Park, given its location, the potential for sites exists. Your input will allow us to comprehensively address all potential impacts as the planning process moves forward.

If you have any questions or would like additional information, please contact Catherine Dewey at 202-245-4711 or by email at catherine_dewey@nps.gov.

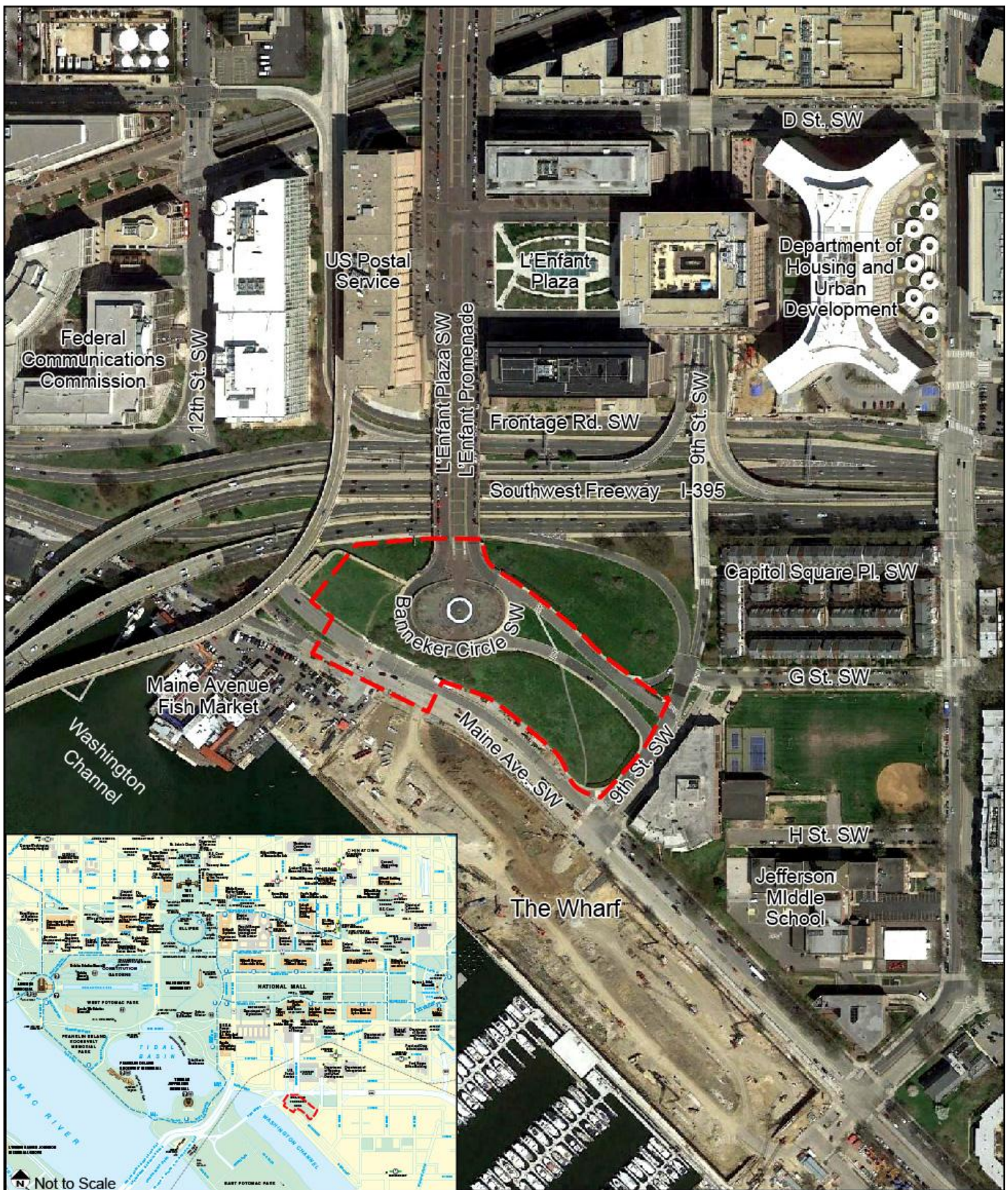
Sincerely,

A handwritten signature in dark ink, appearing to read 'Karen L. Cucurullo', with a long horizontal flourish extending to the right.

Karen L. Cucurullo
Acting Superintendent
National Mall and Memorial Parks
National Park Service

Enclosures

cc: Jason Ross, Delaware Nation, Section 106 Manager
Catherine Dewey, National Mall and Memorial Parks, Chief of Resources Management
Diane Sullivan, National Capital Planning Commission, Senior Urban Planner
Jennifer Hirsch, National Capital Planning Commission, Federal Preservation Officer
Yasmine Doumi, PN Hoffman
Brett Schrader, Stantec Consulting Services Inc.
Kim Daileader, EHT Traceries



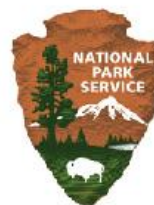
PROPOSED PROJECT STUDY AREA (APPROXIMATE)

Banneker Park Pedestrian Access Improvements
National Mall and Memorial Parks
Washington, DC

Legend: Study Area (Approximate)



0 200 400 800 Feet



THE WHARF

**National
Capital
Planning
Commission**

BANNEKER PARK PEDESTRIAN ACCESS IMPROVEMENTS

Concept #1

Under Concept #1, both the proposed stairway and ramp would be located west of the Banneker Overlook. To accommodate the ramp at this location and to make the ramp ADA-compliant, several switchbacks with resting platforms would be necessary to gradually elevate the ramp up to the overlook. This concept would also include landscaping, improvements to pedestrian crosswalks, lighting installation, and stormwater management.



BANNEKER PARK PEDESTRIAN ACCESS IMPROVEMENTS

Concept #2

Under this potential concept, the proposed stairway would be constructed on the west side of Banneker Overlook. A portion of the wall along Banneker Circle, SW at the connection to the I-395 pedestrian bridge would be removed to provide access for the stairs. The stairs would lead down the grassy slope of the park and connect with the new signalized intersection at Maine Avenue, SW that has been created as part of the Wharf redevelopment. In addition, the existing path to the east of the overlook would be improved and made ADA-compliant under Concept #2. As previously stated, this concept would include landscaping, improvements to pedestrian crosswalks, lighting installation, and stormwater management.

