



United States Department of the Interior



NATIONAL PARK SERVICE

National Mall and Memorial Parks

900 Ohio Drive, S.W.

Washington, D.C. 20024-2000

October 1, 2015

Mr. David Maloney
State Historic Preservation Officer
District of Columbia, Office of Planning
1100 4th Street SW, Suite E650
Washington D.C. 20024

Subject: Placement of FDR Prayer Plaque or Inscription at World War II Memorial

Dear Mr. Maloney:

The National Park Service (NPS), National Mall and Memorial Parks (NAMA) wishes to initiate consultation with the District of Columbia State Historic Preservation Office (DC SHPO) under Section 106 of the National Historic Preservation Act regarding the installation of the Franklin D. Roosevelt prayer plaque or inscription at the World War II Memorial, in accordance with 36 CFR 800.3 of the regulations of the Advisory Council on Historic Preservation.

Management Summary and Identification of Historic Properties

The Friends of the National World War II Memorial, Inc., pursuant to Public Law 113-123 (June 30, 2014) proposes to “install in the area of the World War II Memorial in the District of Columbia a suitable plaque or an inscription with the words that President Franklin D. Roosevelt prayed with the United States on D-Day, June 6, 1944.” The Friends of the National World War II Memorial, Inc., in cooperation with the NPS, has initially identified the following four potential sites for this prayer plaque or inscription within the immediate vicinity of the World War II Memorial:

- Location A: Circle of Remembrance –A contemplative area located on a small knoll in the northwest corner of the site. It is 38 feet in diameter and enclosed by a 2-foot high fieldstone retaining wall. Around the inside perimeter of the circular area is a curved wooden bench with a cast iron frame. The center of the space contains a circular bed of shrubs and annual plantings.
- Location B: Path Edge Northeast of the Atlantic Memorial Arch –The site is located north of the Atlantic Memorial Arch on a primary pedestrian path connecting the Atlantic Memorial Arch and Constitution Gardens. The path is 16 feet in width. Site furnishings include light poles.
- Location C: Ceremonial Entrance –The ceremonial entrance to the Memorial is located along 17th Street on the centerline of the Mall axis. A wide turf slope with three sets of terraced stairs separates the ramps.
- Location D: Path Edge Northwest of the Information Station –The path northwest of the information station is a primary circulation path connecting the information station to the Memorial and to the path adjacent to the reflecting Pool.

Although it has not been determined at this time, as part of this proposal, the Friends of the National World War II Memorial, Inc. will design and construct a plaque or inscription within the site selected.

The World War II Memorial was constructed in 2004 and is located on the National Mall at 17th Street, NW. It honors the 16 million who served in the armed forces of the U.S., the more than 400,000 who died, and all who supported the war effort from home. By its Congressional designation as a national memorial, the World War II Memorial was automatically listed in the National Register of Historic Places at its dedication. The Memorial is also listed as a contributing site within the East and West Potomac Parks National Register Historic District (1973, revised 2001). The Area of Potential Effect (APE) includes the immediate area at this location (see enclosed map). It is expected that the proposed changes will not impact the shape and general character of the site.


Consultation and Potential Effects to Historic Properties

Based on known information about Native American Groups in the study area, we have determined that there are no federally recognized tribes listed that might attach cultural or religious significance to the APE. Therefore, no consultation with Native American Groups is necessary. Additionally, it is not believed that this action will affect ethnographic resources.

Based on the analysis of the four sites, the NPS has determined that the Circle of Remembrance (Location A) is the preferred location for the placement of the prayer plaque or inscription and it will have no adverse effect under Section 106 of the National Historic Preservation Act on the World War II Memorial. The site offers well filtered viewsheds from the National Mall's Monumental Core, including filtered views from the Memorial's primary precinct. The site is also compatible with existing circulation patterns, and little modification to existing paths would be necessary. Furthermore, siting the prayer in this location would be compatible with existing elements of the World War II Memorial. As the design phase of the project proceeds, we will continue consultation with DCSHPO and obtain input from the public per 800.3(e) in public meetings and through our Planning, Environment, and Public Comment website (www.parkplanning.nps.gov).

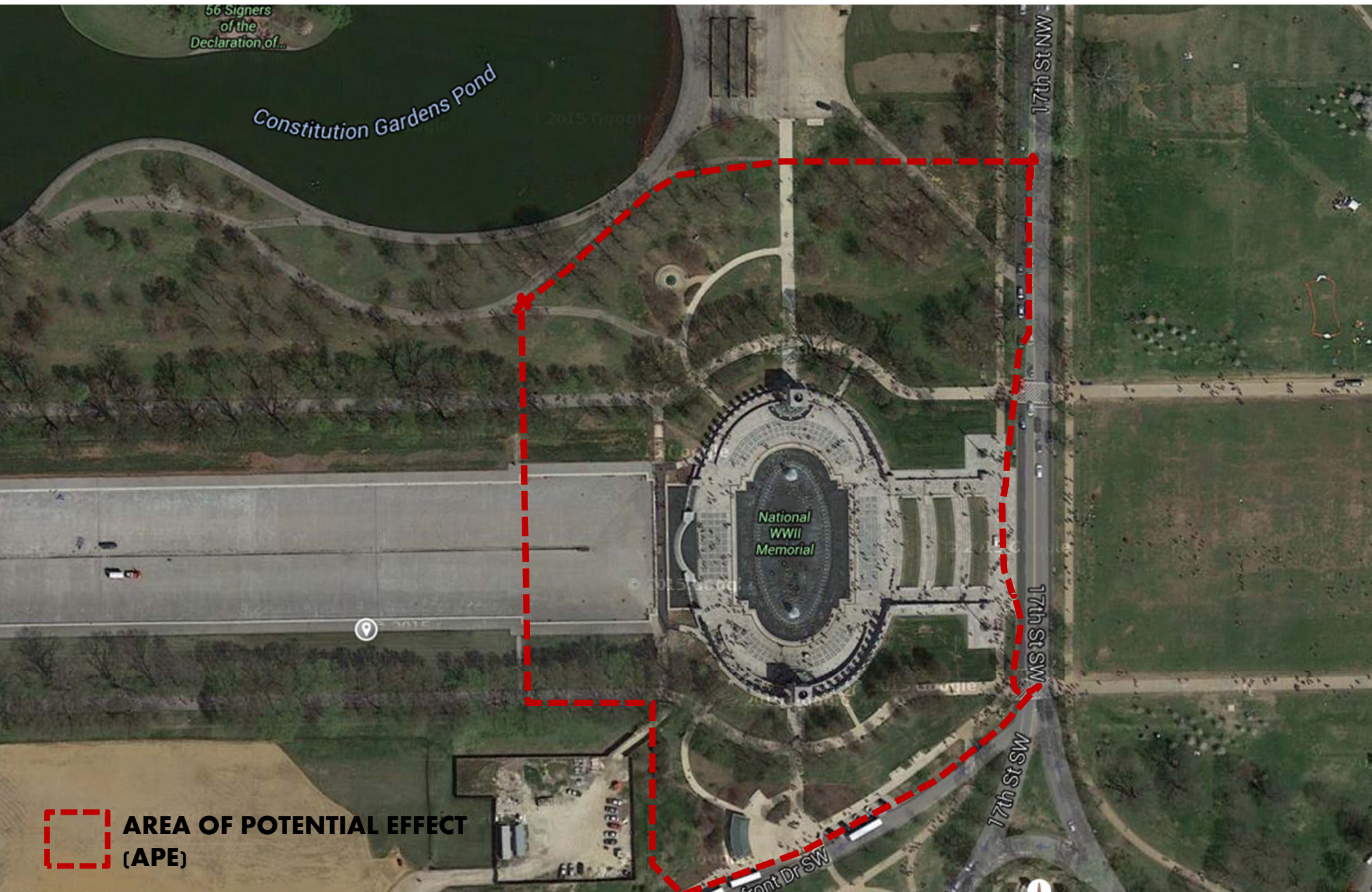
Enclosed find the relevant plans and supporting documentation that identifies the location of the APE and additional details of the project. If you have any questions, please feel free to contact Catherine Dewey, Chief of Resource Management, at (202) 245-4711 or catherine_dewey@nps.gov.

Sincerely,



Gay Vietzke
Superintendent
National Mall and Memorial Parks

Enclosure



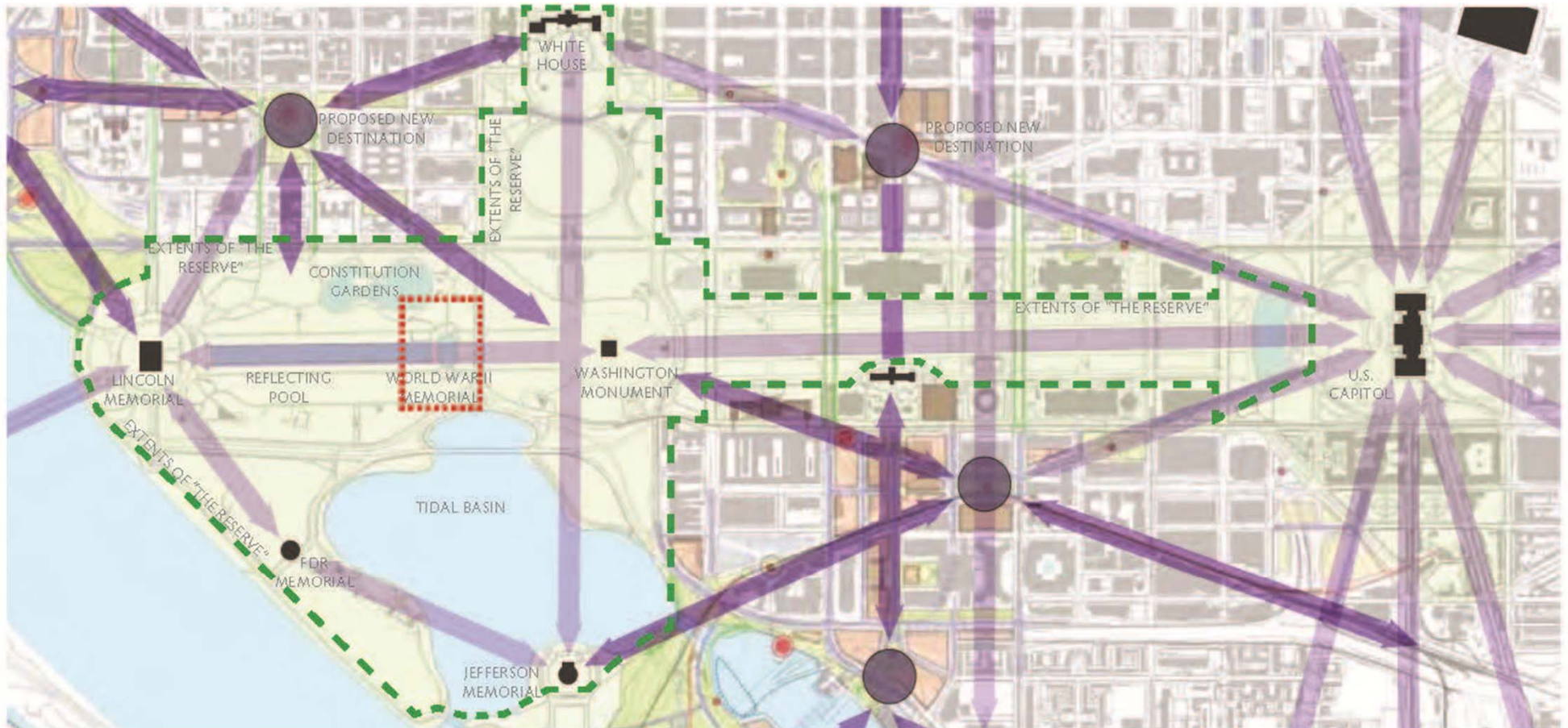
WORLD WAR II MEMORIAL:
SITE ANALYSIS OF POTENTIAL LOCATIONS FOR PLACEMENT OF FDR D-DAY PRAYER



Prepared for:

FRIENDS OF THE NATIONAL
WORLD WAR II MEMORIAL, INC

Context within NCPC's Monumental Core Framework Plan



Criteria for Site Selection

Nine criteria, developed in collaboration with the Friends of the National World War II Memorial and the National Park Service, aid in the selection and evaluation of potential locations for the placement of FDR's D-Day Prayer.

FILTERED VIEWSHEDS FROM THE NATIONAL MALL'S MONUMENTAL CORE AND FROM THE NATIONAL WORLD WAR II MEMORIAL'S PRIMARY PRECINCT

The D-Day Prayer shall be sited with consideration for the protected viewsheds from key elements in the Monumental Core, particularly within the NCPC-designated "Reserve", such as the Lincoln Memorial, the Washington Monument, Constitution Gardens, and the Jefferson Memorial.

COMPATIBILITY WITH EXISTING CIRCULATION AND VISITATION PATTERNS

The siting of the D-Day Prayer shall limit disturbance to the existing circulation patterns and shall not require additional walkways. In addition, the D-Day Prayer shall be sited in a location that can accommodate the public, in a location that is easy to find, and in a location in which it can be interpreted as a unique element of the Memorial.

COMPATIBILITY WITH EXISTING ELEMENTS OF THE MEMORIAL

The siting of the D-Day Prayer shall limit disturbance to existing elements of the Memorial and its approved design.

EASE OF ABAAS ACCESSIBILITY

The D-Day Prayer shall be sited to easily accommodate ABAAS (GSA's Architectural Barriers Act Accessibility Standard) accessible routes to the D-Day Prayer location.

SUITABILITY TO ACCOMMODATE ENTIRE D-DAY PRAYER

The D-Day Prayer shall be sited in an area that can accommodate the entire length of the D-Day Prayer.

PROXIMITY TO THE ATLANTIC ARCH AND EISENHOWER'S D-DAY INSCRIPTION

The D-Day Prayer shall be sited with consideration for the existing locations of both

DISTURBANCE TO ROOTS OF EXISTING MATURE TREES

The D-Day Prayer shall be sited to limit disturbance to the roots of existing mature trees, with particular consideration for the existing double row of elms flanking the Memorial.

VEGETATIVE SCREENING

The D-Day Prayer shall be sited with consideration for existing mature vegetation that can provide a sense of comfortable enclosure and filter viewsheds to the bustling primary Memorial precinct.

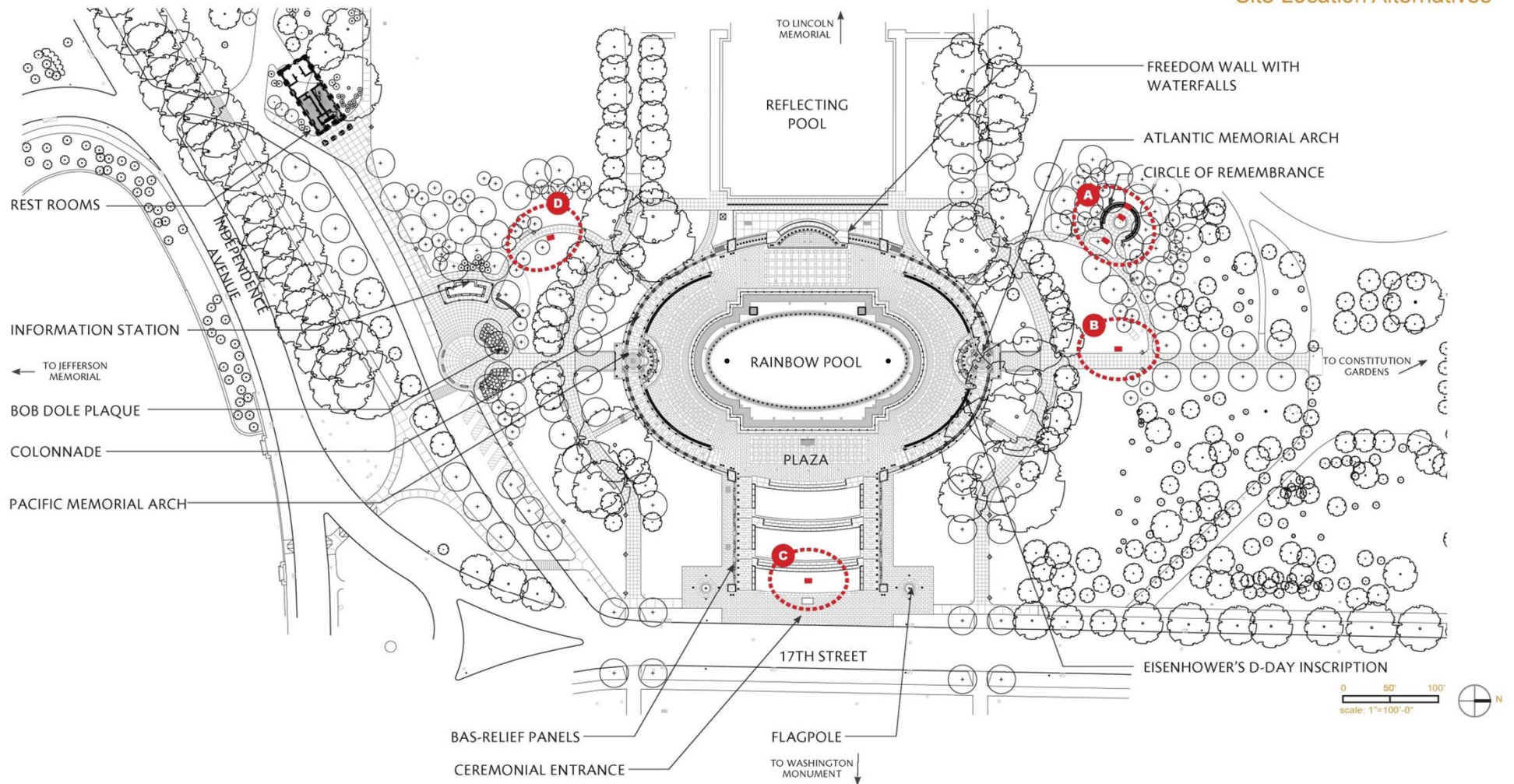
EASE OF LONG-TERM MAINTENANCE

The D-Day Prayer shall be designed and sited with consideration for long-term maintenance. The NPS has requested that the D-Day Prayer be inscribed in bronze rather than stone for ease of maintenance. Also, the D-Day Prayer shall be sited in a location where it can be elevated (and not flat on the ground) for ease of maintenance.

CONTEMPLATIVE CHARACTER

The D-Day Prayer shall be sited to allow contemplation and reflection. Because the central Memorial precinct has a high volume of pedestrian traffic, siting the D-Day Prayer apart from the central precinct will offer greater opportunity for peaceful and prayerful reflection.

Site Location Alternatives



Site Location Alternative A:

Circle of Remembrance

Existing Conditions Assessment

The Circle of Remembrance is a contemplative area located on a small knoll in the northwest corner of the site. It is 38 feet in diameter and enclosed by a 2-foot high fieldstone retaining wall. Around the inside perimeter of the circular area is a curved wood bench with a cast iron frame. The center of the space contains a circular bed of shrubs and annual plantings.

Adherence to Criteria for Site Selection

FILTERED VIEWSHEDS

- The site offers well filtered viewsheds from the National Mall's Monumental Core, including well filtered views from the Lincoln Memorial and from the Washington Monument.
- The site offers well filtered viewsheds from the Memorial's primary precinct. The site is screened by flowering trees and shrubs and offers an opportunity to include additional vegetative screening.

COMPATIBILITY WITH EXISTING CIRCULATION AND VISITATION PATTERNS

- The site is compatible with existing circulation patterns, and little modification to existing paths would be necessary.

COMPATIBILITY WITH EXISTING ELEMENTS OF THE MEMORIAL

- Siting the D-Day Prayer in this location would be compatible with the existing elements of the Memorial.



1 Circle of Remembrance



2 Filtered View during Spring



3 Vegetation and Visual Connection to Atlantic Front



4 View from Constitution Gardens

Adherence to Criteria for Site Selection (Continued)

EASE OF ABAAS ACCESSIBILITY

- The site is easily ABAAS accessible.

SUITABILITY TO ACCOMMODATE ENTIRE D-DAY PRAYER

- The site can accommodate the entire D-Day Prayer in any one of three different possible locations within the site.

PROXIMITY TO THE ATLANTIC AND EISENHOWER'S D-DAY INSCRIPTION

- The site is well-sited in relation to the Atlantic arch and the Eisenhower's D-Day Inscription, as it lies on the Atlantic front side of the Memorial.

DISTURBANCE TO ROOTS OF EXISTING MATURE TREES

- Since existing vegetation near the site includes flowering trees and shrubs, siting the D-Day Prayer in this location will not significantly disturb roots of any existing mature canopy trees.

VEGETATIVE SCREENING

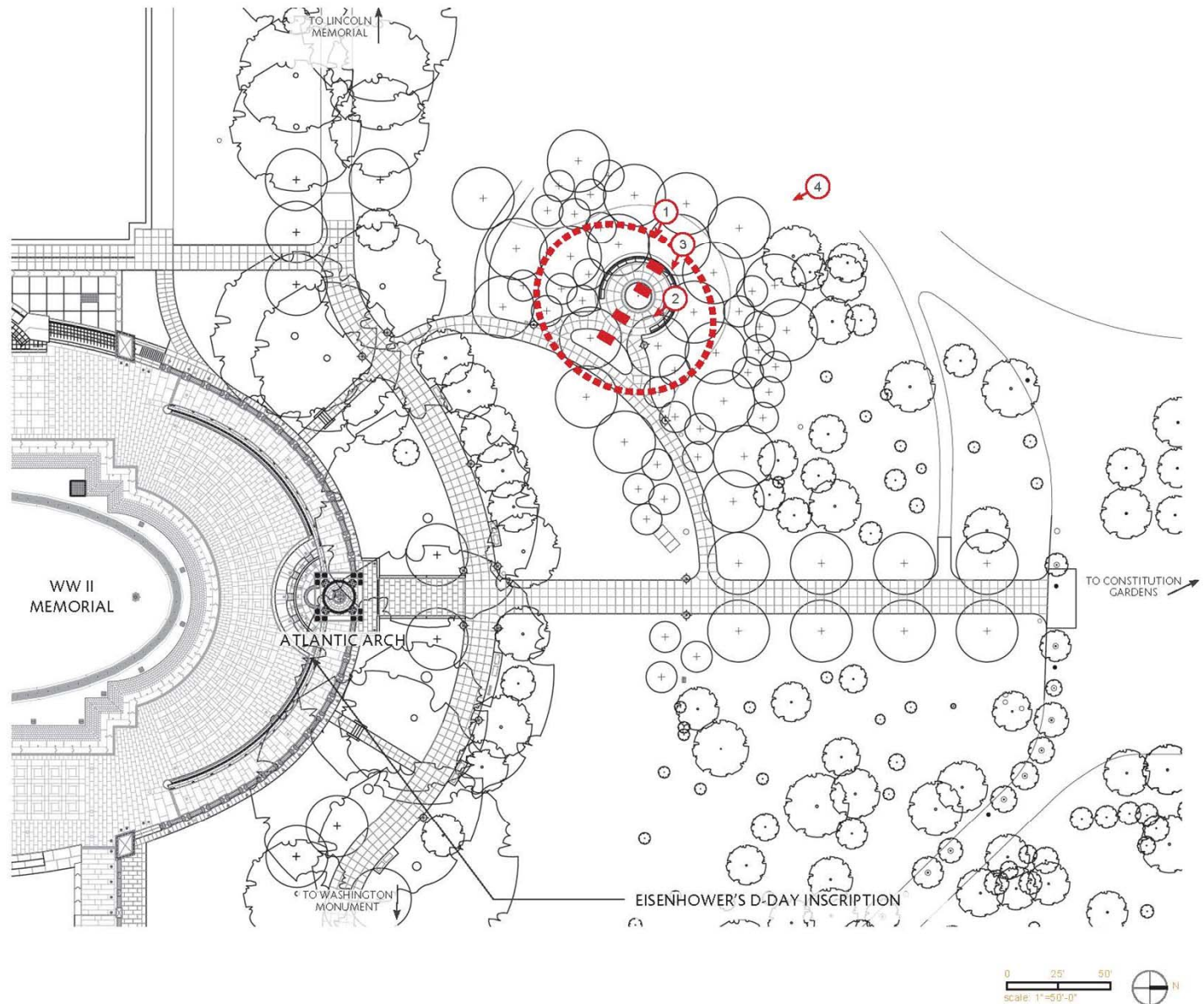
- The site offers significant vegetative screening that provides a sense of comfortable enclosure and that filters viewsheds to the bustling primary Memorial precinct.

EAST OF LONG-TERM MAINTENANCE

- Siting the D-Day Prayer in this location does not suggest any particular long-term maintenance concerns.

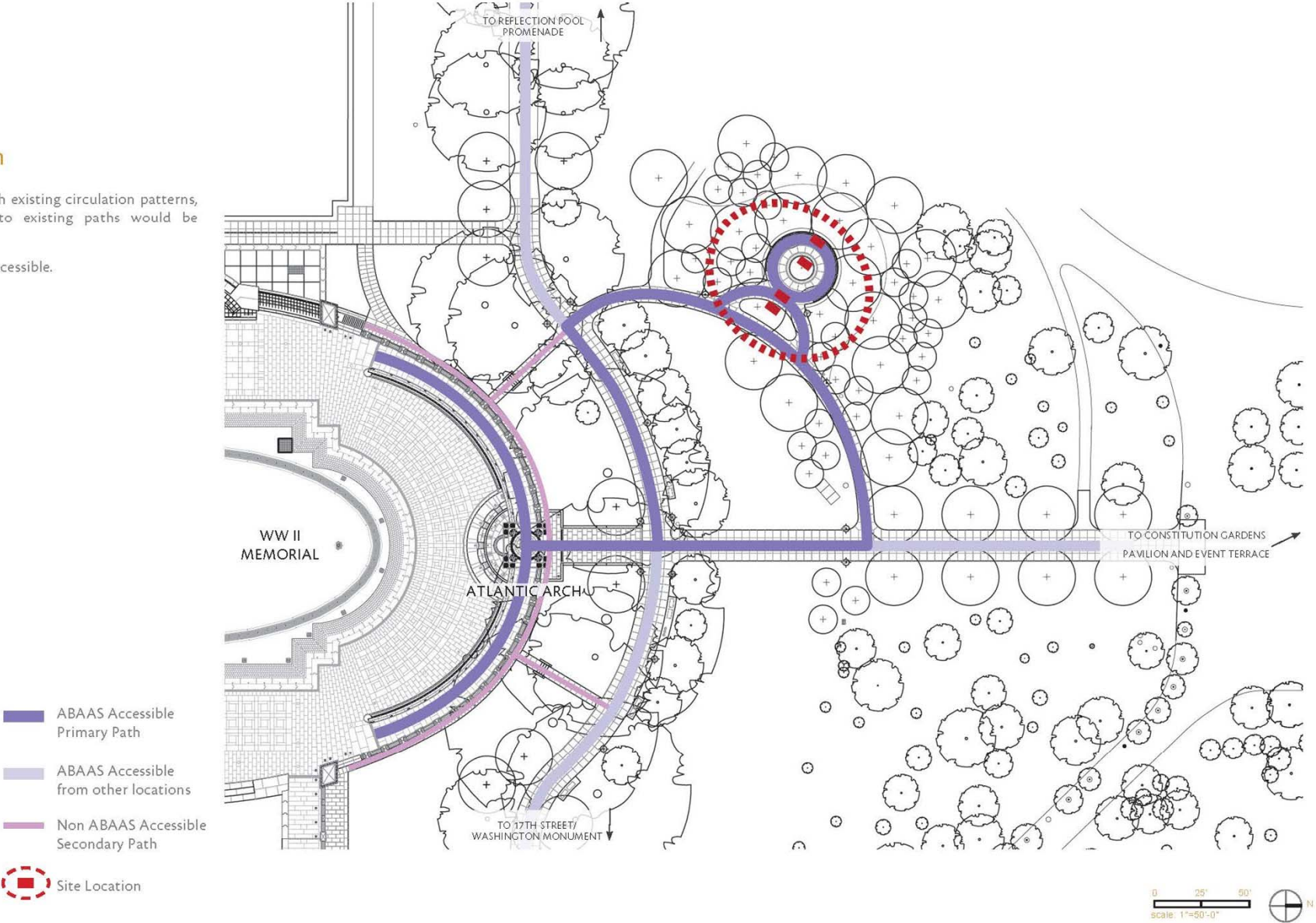
CONTEMPLATIVE CHARACTER

- The site offers a contemplative character. It is not sited on a primary pedestrian path or in close proximity to heavy pedestrian or vehicular traffic.



Circulation Diagram

- The site is compatible with existing circulation patterns, and little modification to existing paths would be necessary.
- The site is easily ABAAS accessible.

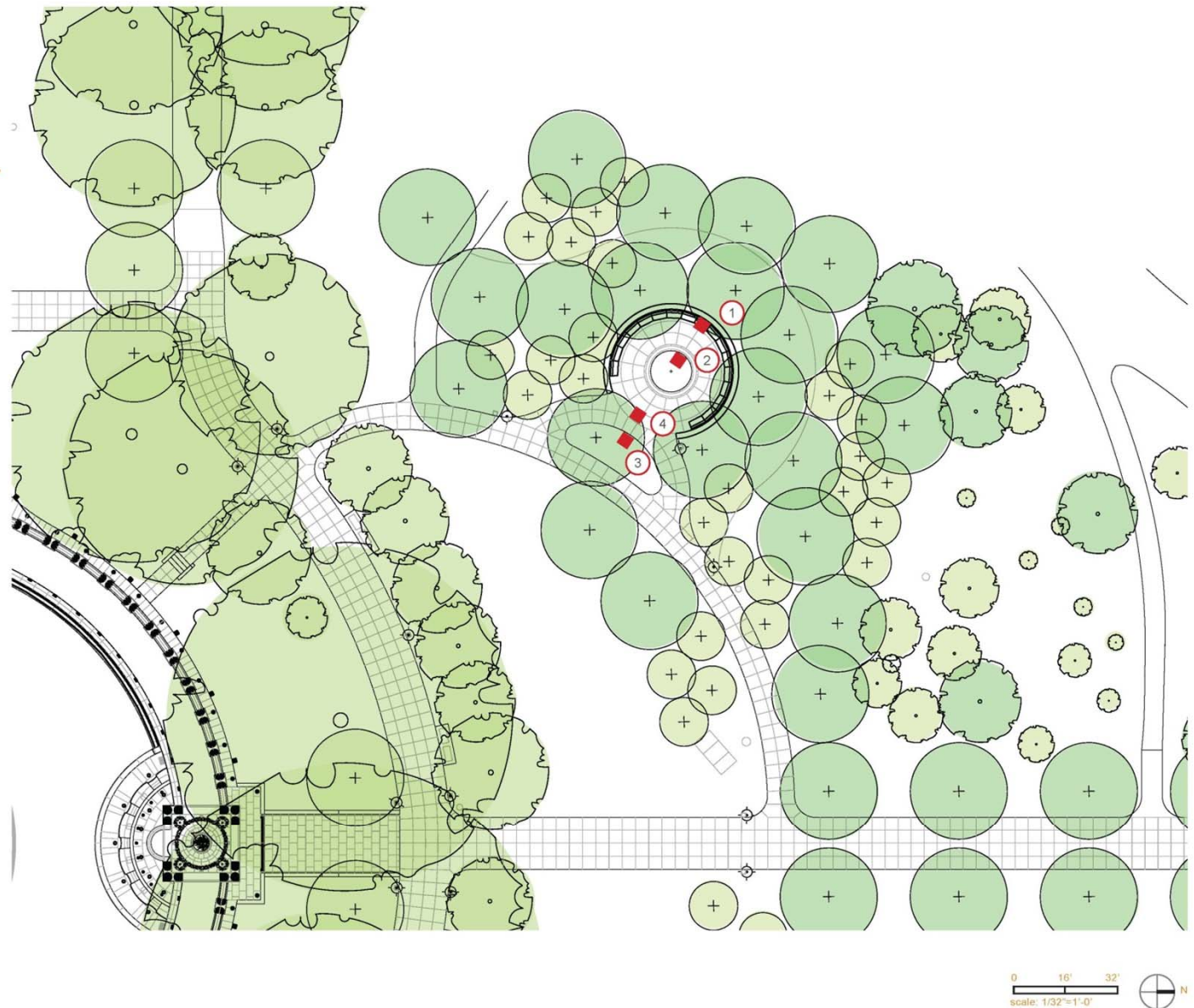


Potential Locations for the D-Day Prayer within the Circle of Remembrance

This site is the best match for the criteria for site selection outlined at the beginning of the analysis.

Therefore, several possible locations within this site have been identified for the siting of the D-Day Prayer:

- **Option One:** Replace existing wood benches (and possibly the fieldstone wall) with granite benches to match those in the primary Memorial precinct. The D-Day Prayer could be sited in the center of the bank of benches. In order to protect views from Constitution Gardens, the benches and D-Day Prayer shall not be any taller than the existing fieldstone wall.
- **Option Two:** The D-Day Prayer could be sited within the central planter.
- **Option Three:** The D-Day Prayer could be sited within the planter at the entrance of the Circle of Remembrance.
- **Option Four:** The D-Day Prayer could be sited on the paving area at the entrance of the Circle of Remembrance.



Potential Locations for the D-Day Prayer within the Circle of Remembrance



① Potential Location Option One



② Potential Location Option Two



③ Potential Location Option Three



④ Potential Location Option Four

Alternative B:

Path Edge Northeast of the Atlantic Memorial Arch

Existing Conditions Assessment

The site is located at the north of the Atlantic Memorial Arch on a primary pedestrian path connecting the Atlantic Memorial Arch and Constitution Gardens. The path is 16 feet in width. Site furnishings include light poles.

Adherence to Criteria for Site Selection

FILTERED VIEWSHEDS

- The site offers somewhat filtered viewsheds from the National Mall's Monumental Core, including filtered views from the Lincoln Memorial and from the Washington Monument.
- Viewsheds from the Memorial's primary precinct are plainly visible. The site is screened only by two rows of elms set in lawn. However the site offers some opportunity to include additional vegetative screening.

COMPATIBILITY WITH EXISTING CIRCULATION AND VISITATION PATTERNS

- The site is compatible with existing circulation patterns, and little modification to existing paths would be necessary.

COMPATIBILITY WITH EXISTING ELEMENTS OF THE MEMORIAL

- Siting the D-Day Prayer in this location would be compatible with the existing elements of the Memorial.



1 View to the Site towards Atlantic Front



2 View to the Site towards the Washington Monument

Adherence to Criteria for Site Selection (Continued)

PROXIMITY TO THE ATLANTIC ARCH AND THE EISENHOWER'S D-DAY INSCRIPTION

- The site is well-sited in relation to the Atlantic arch and the Eisenhower's D-Day inscription, as it lies just outside the colonnade to the north from the D-Day Prayer.

EASE OF ABAAS ACCESSIBILITY

- The site is easily ABAAS accessible.

SUITABILITY TO ACCOMMODATE ENTIRE D-DAY PRAYER

- The site can accommodate the entire D-Day Prayer.

DISTURBANCE TO ROOTS OF EXISTING MATURE TREES

- The site does significantly disturb roots of any existing trees.

VEGETATION SCREENING

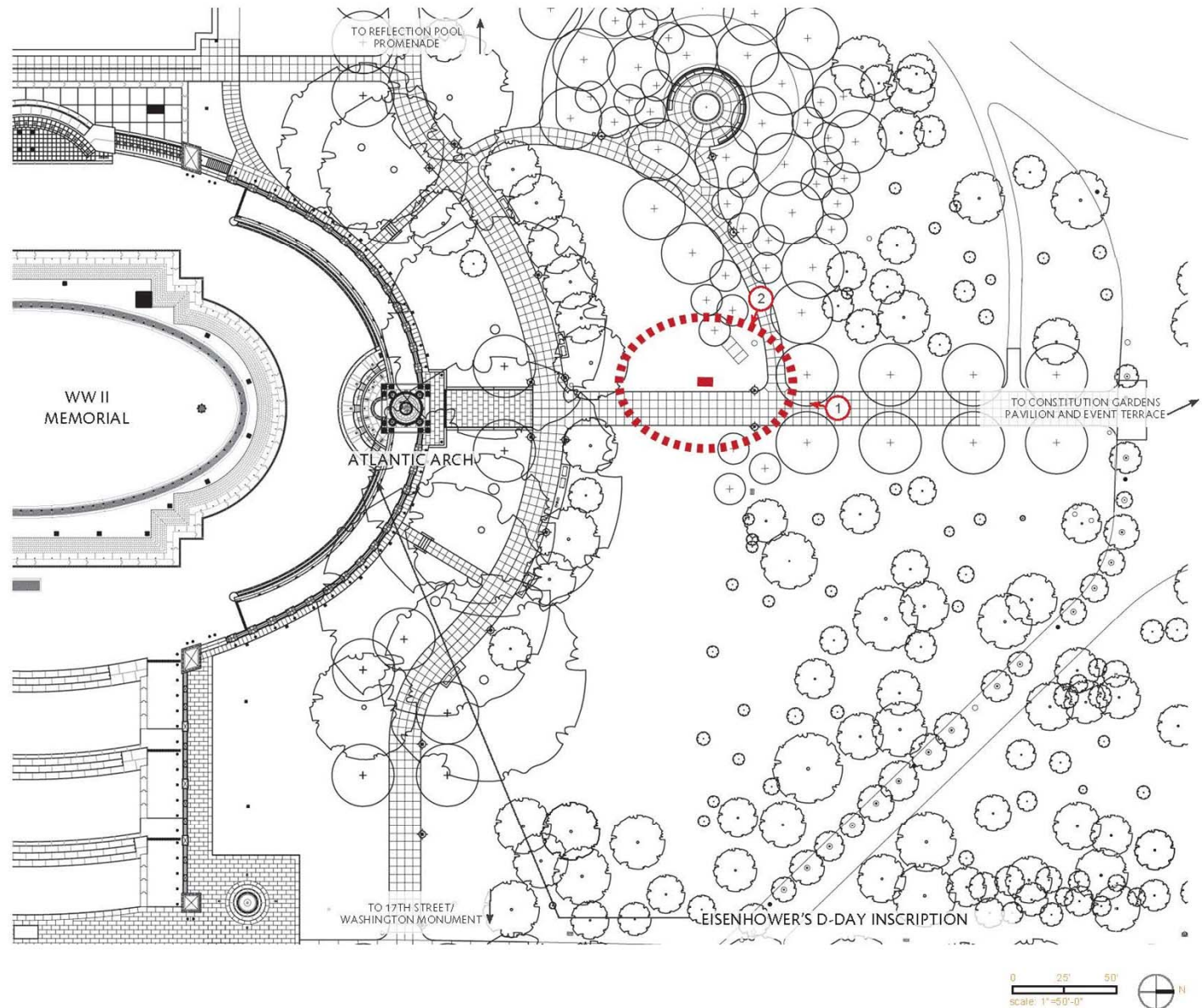
- The site offers limited vegetative screening and does not offer a sense of enclosure.

EASE OF LONG-TERM MAINTENANCE

- Sitting the D-Day Prayer in this location does not suggest any particular long-term maintenance concerns.

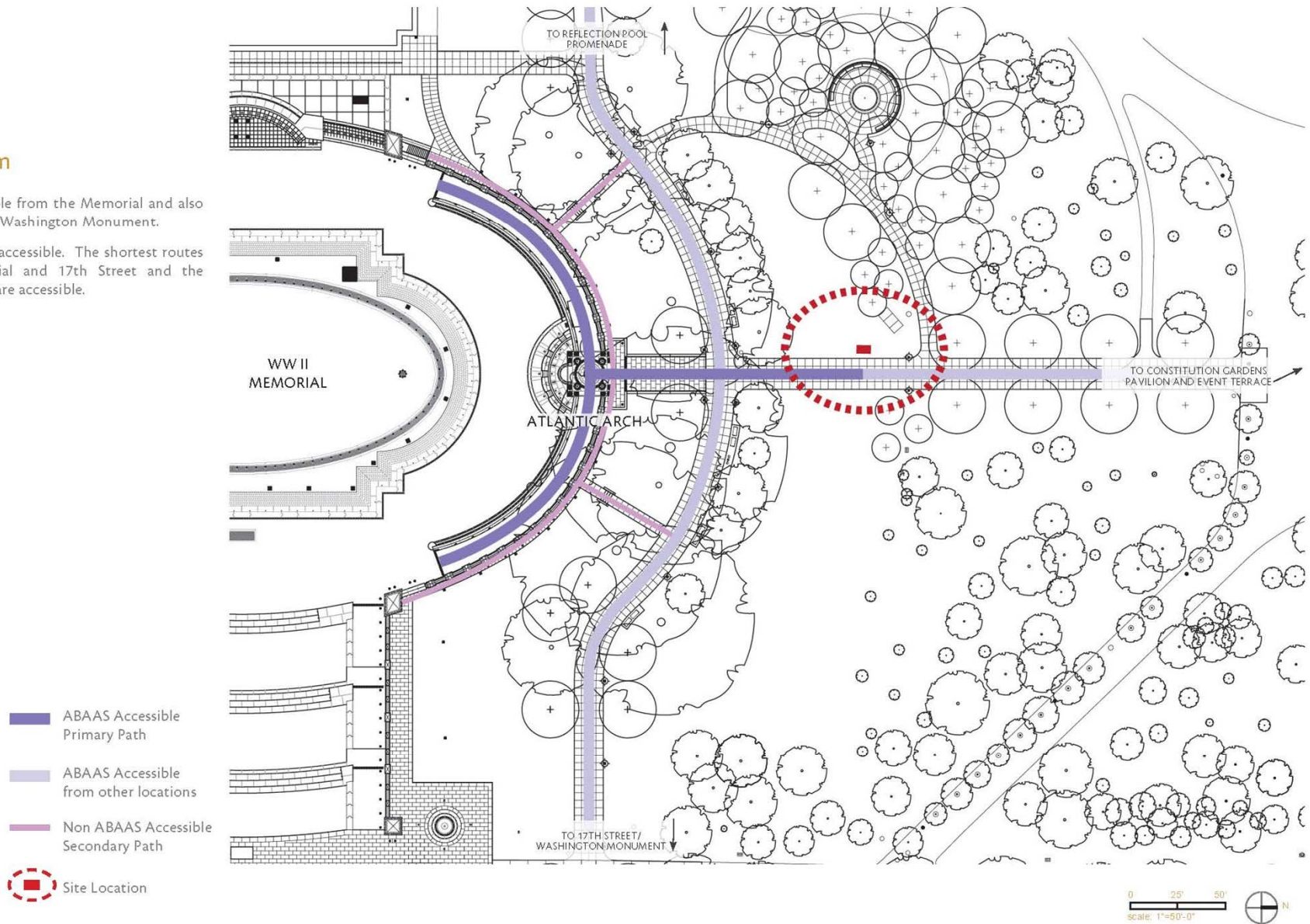
CONTEMPLATIVE CHARACTER

- The site offers a somewhat contemplative character. The pedestrian traffic traversing from the Atlantic Memorial Arch results in some pedestrian noise.



Circulation Diagram

- The site is easily accessible from the Memorial and also from 17th Street and the Washington Monument.
- The site is easily ABAAS accessible. The shortest routes from both the Memorial and 17th Street and the Washington Monument are accessible.



Site Alternative C: Ceremonial Entrance

Existing Conditions Assessment

The ceremonial entrance to the Memorial is located along 17th Street on the centerline of the Mall axis. A wide grassy slope with three sets of terraced stairs separates the ramps. The lawn panels welcome many of the Memorial's 4 million visitors per year. They function as a public assembly area, providing space for 2,000 seated or 4,000 standing for ceremonies and concerts in the plaza. In 2014, this area accommodated 309 permitted activities. Marker stones at the end of each ramp are inscribed with quotes from FDR, including a tribute to the sacrifice required of the American people to win the war and, on the west face of the southeast stone, a quote from his speech following the December 7, 1941 attack on the U.S. at Pearl Harbor in Hawaii.

Adherence to Criteria for Site Selection

FILTERED VIEWSHEDS

- The site does not offer filtered viewsheds from the National Mall's Monumental Core or from the Memorial's primary precinct. It is located on the central access of both and is very visible.

COMPATIBILITY WITH EXISTING CIRCULATION AND VISITATION PATTERNS

- The site is not compatible with existing circulation patterns, since an additional path or paving would be necessary to accommodate ABAAS accessibility.

COMPATIBILITY WITH EXISTING ELEMENTS OF THE MEMORIAL

- Siting the D-Day Prayer in this location may be disruptive to the open nature of this space, designed as a ceremonial entrance and public assembly area.



1 View towards Pacific Front



2 Public music performance



3 View towards Lincoln Memorial



4 View to the Ceremonial Entrance during an event

Adherence to Criteria for Site Selection (Continued)

EASE OF ABAAS ACCESSIBILITY

- The site is not ABAAS accessible since it is on lawn.

SUITABILITY TO ACCOMMODATE ENTIRE D-DAY PRAYER

- The site can accommodate the entire D-Day Prayer.

PROXIMITY TO THE ATLANTIC ARCH AND THE EISENHOWER'S D-DAY INSCRIPTION

- The site is not particularly proximate to the Atlantic arch or the Eisenhower's D-Day Inscription, as it is on the site's central access. However, it is tied thematically to the marker stones at the end of each ramp that are inscribed with quotes from FDR.

DISTURBANCE TO ROOTS OF EXISTING MATURE TREES

- The site does not disturb roots of any existing trees.

VEGETATIVE SCREENING

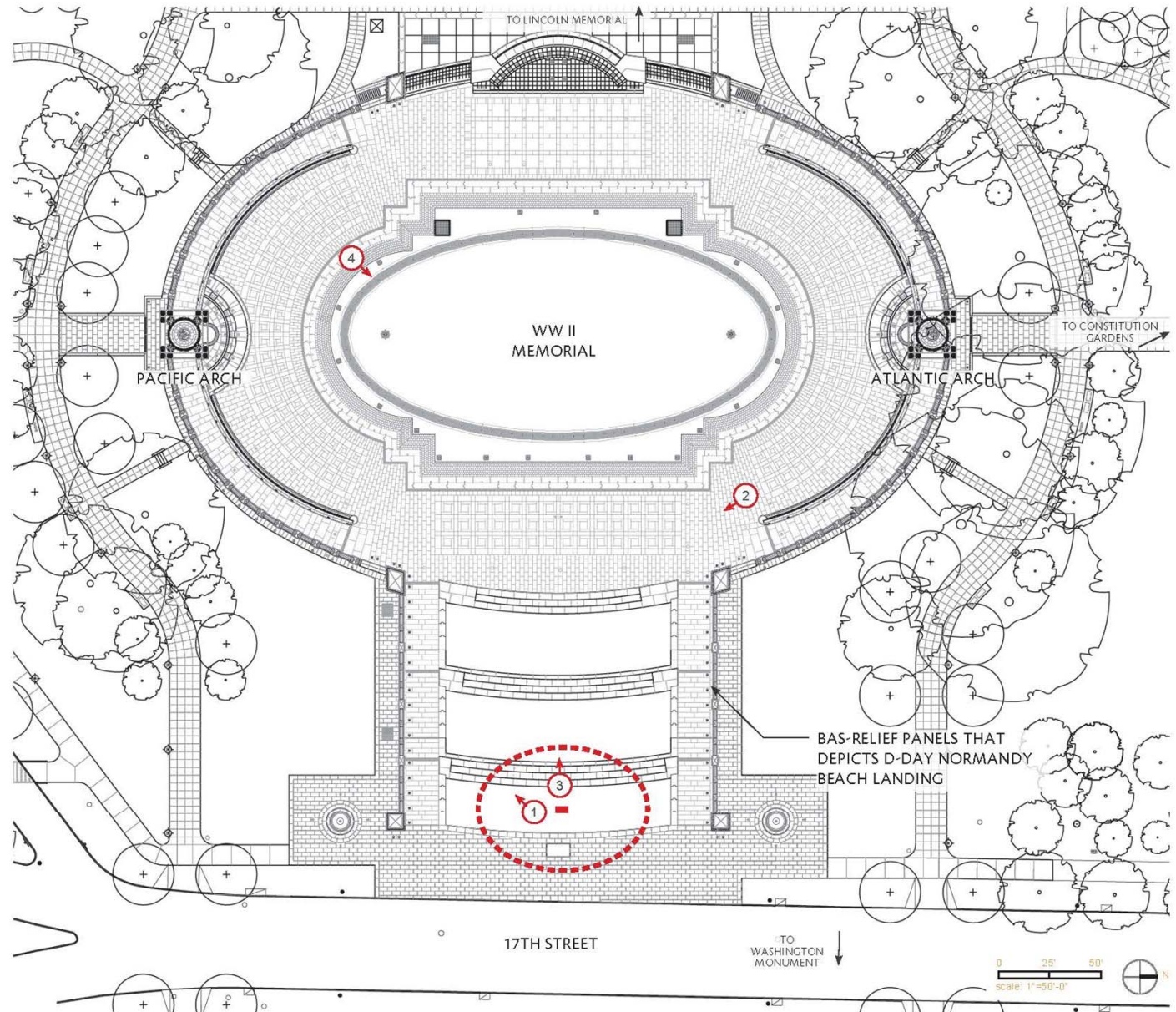
- The site does not offer any vegetative screening and, as the site is a lawn panel, does not offer the opportunity to supplement with any additional vegetative screening.

EASE OF LONG-TERM MAINTENANCE

- The site's large volumes of pedestrian traffic (originally conceived as a greenway to welcome guests) and use for 2,000 person seated or 4,000 standing assembly ceremonies and concerts will have an effect on the long-term maintenance of the D-Day Prayer.

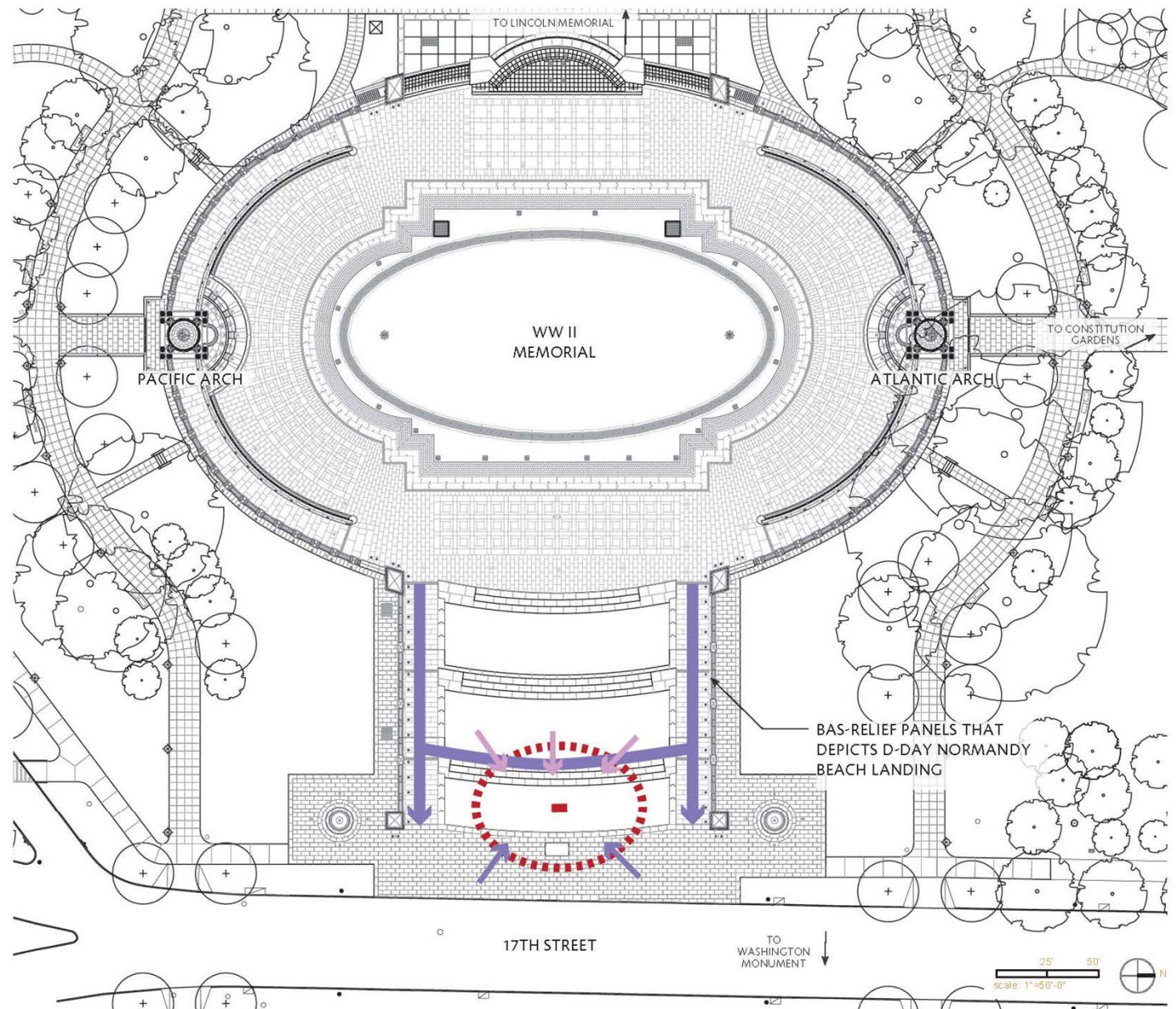
CONTEMPLATIVE CHARACTER

- The site does not offer a contemplative character. The persistent vehicular traffic at 17th Street, the heavy pedestrian traffic at the Memorial's ceremonial entrance, and the use for over 300 permitted activities per year make this a bustling location.



Circulation Diagram

- Since the site is the ceremonial entrance to the Memorial, it is easily accessible, particularly from 17th Street. However, it is located in a heavily trafficked area.
- During ceremonies and concerts, the prayer will be difficult to access due to its central placement within this ceremonial plaza that accommodates 2,000 seated and 4,000 standing.
- The site is not ABAAS code accessible because of its location on the grass panel. Two ramps, one on either side of the lawn panels, provide ABAAS accessible routes to the site.



Site Alternative D:

Path Edge Northwest of the Information Station

Existing Conditions Assessment

The path northwest of the Information Station is a primary circulation path connecting the Information Station to the Memorial and to the path adjacent to the Reflecting Pool. It is near to the tourist bus stop and to Independence Avenue. The path is eight feet in width. Site furniture includes a pair of benches and light poles.

Adherence to Criteria for Site Selection

FILTERED VIEWSHEDS

- The site offers somewhat filtered viewsheds from the National Mall's Monumental Core, including filtered views from the Lincoln Memorial and from the Washington Monument.
- The site offers somewhat filtered viewsheds from the Memorial's primary precinct. Additionally, the site offers the opportunity to include additional vegetative screening to further filter views.

COMPATIBILITY WITH EXISTING CIRCULATION AND VISITATION PATTERNS

- The site is compatible with existing circulation patterns, and little modification to existing paths would be necessary.

COMPATIBILITY WITH EXISTING ELEMENTS OF THE MEMORIAL

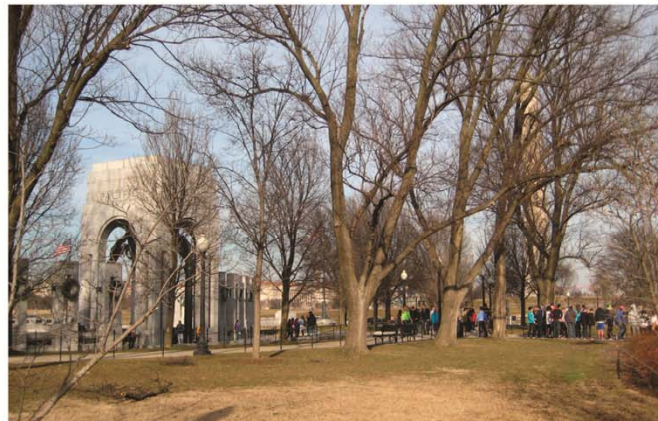
- Siting the D-Day Prayer in this location would be compatible with the existing elements of the Memorial.



1 View from Pacific Gate towards Site



2 Existing Bench, Light Pole and Path



3 View towards Pacific Front and Washington Monument



4 Existing Bench, Light Pole and Path

Adherence to Criteria for Site Selection (Continued)

EASE OF ABAAS ACCESSIBILITY

- The site is easily ABAAS accessible.

SUITABILITY TO ACCOMMODATE ENTIRE D-DAY PRAYER

- The site can accommodate the entire D-Day Prayer.

PROXIMITY TO THE ATLANTIC ARCH AND THE EISENHOWER'S D-DAY INSCRIPTION

- The site is not proximate to the Atlantic arch or to Eisenhower's D-Day Inscription.

DISTURBANCE TO ROOTS OF EXISTING MATURE TREES

- Since existing vegetation near the site includes flowering trees and shrubs, siting the D-Day Prayer in this location will not significantly disturb roots of any existing canopy trees.

VEGETATIVE SCREENING

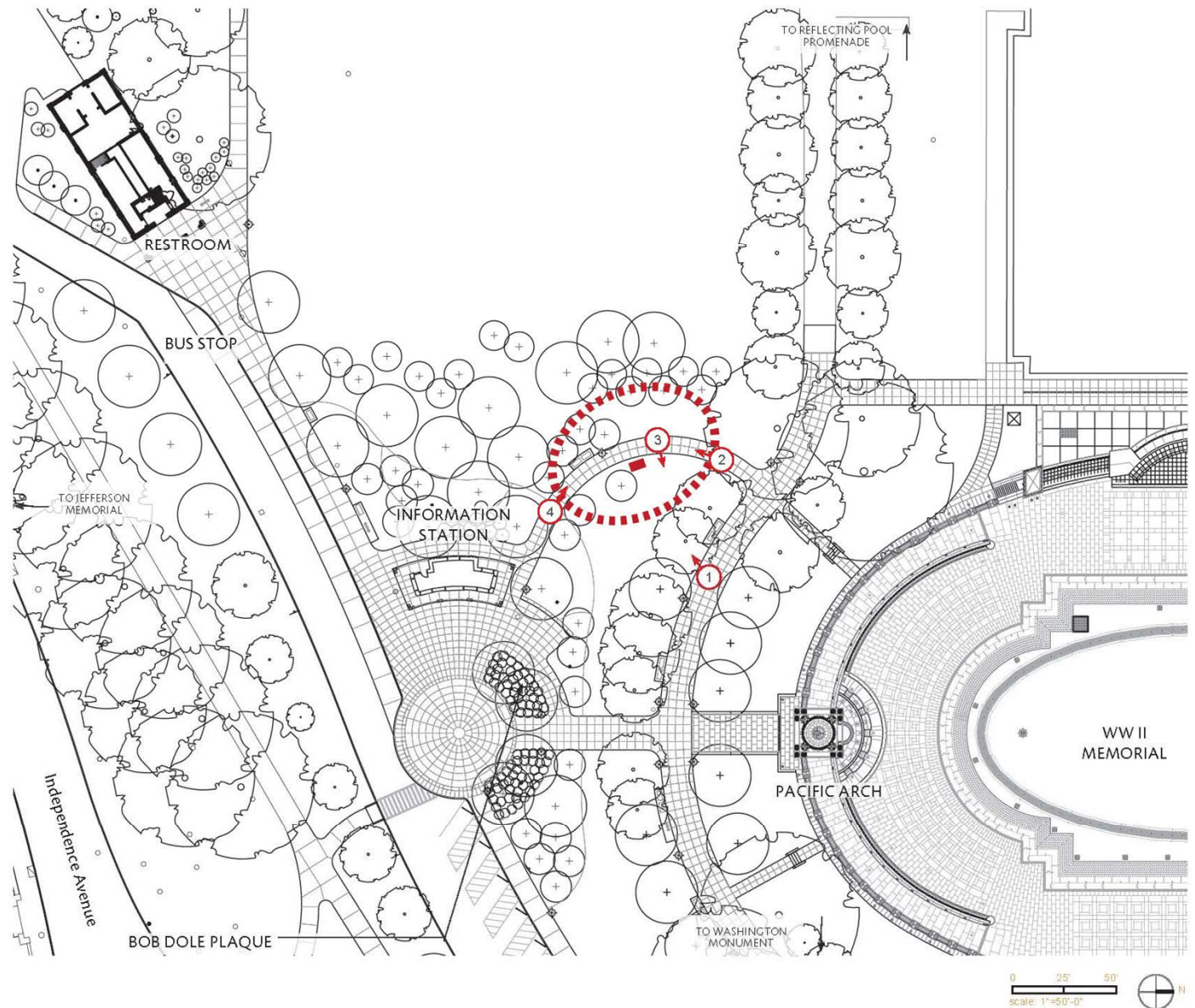
- The site offers existing vegetative screening and the opportunity to supplement with additional vegetative screening.

EASE OF LONG-TERM MAINTENANCE

- Siting the D-Day Prayer in this location does not suggest any particular long-term maintenance concerns.

CONTEMPLATIVE CHARACTER

- The site offers a somewhat contemplative character. The persistent vehicular traffic at Independence Avenue and the proximity to the bus stop will result in some vehicular noise. The ambient noise from the Information Center and from visitors traversing from the Information Center to the Memorial or to the Reflecting Pool will result in some pedestrian noise.



Circulation Diagram

- The site is easily accessible, particularly from the Information Station.
- The site is easily ABAAS accessible. The shortest paths from both the Memorial and the Information Station are accessible.

