

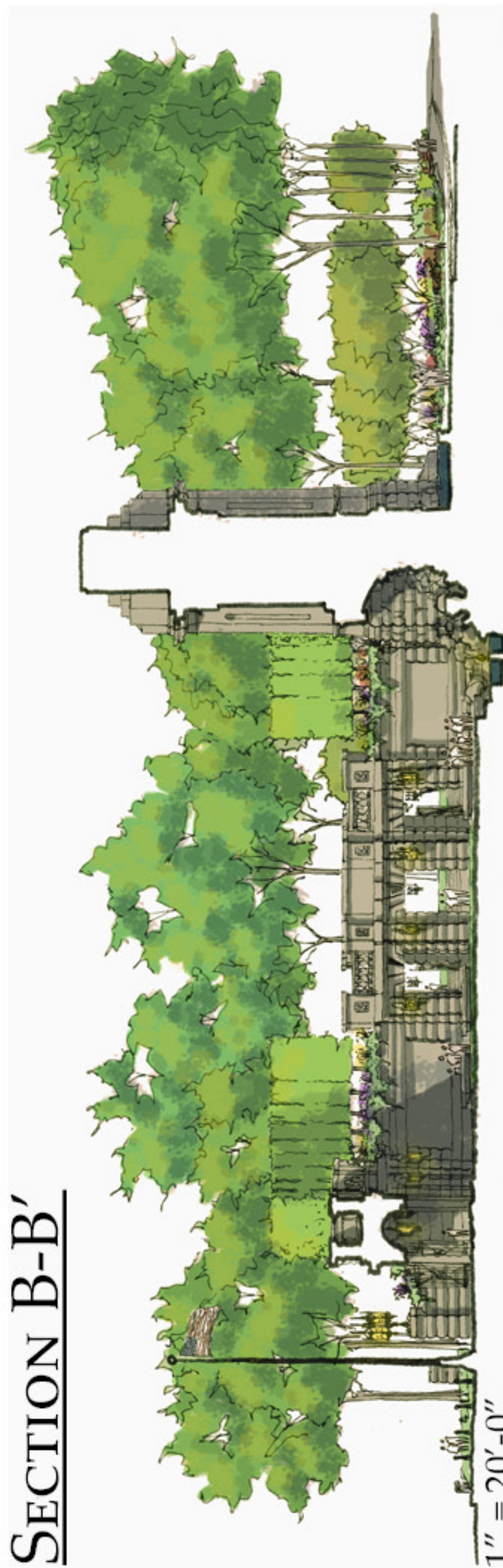
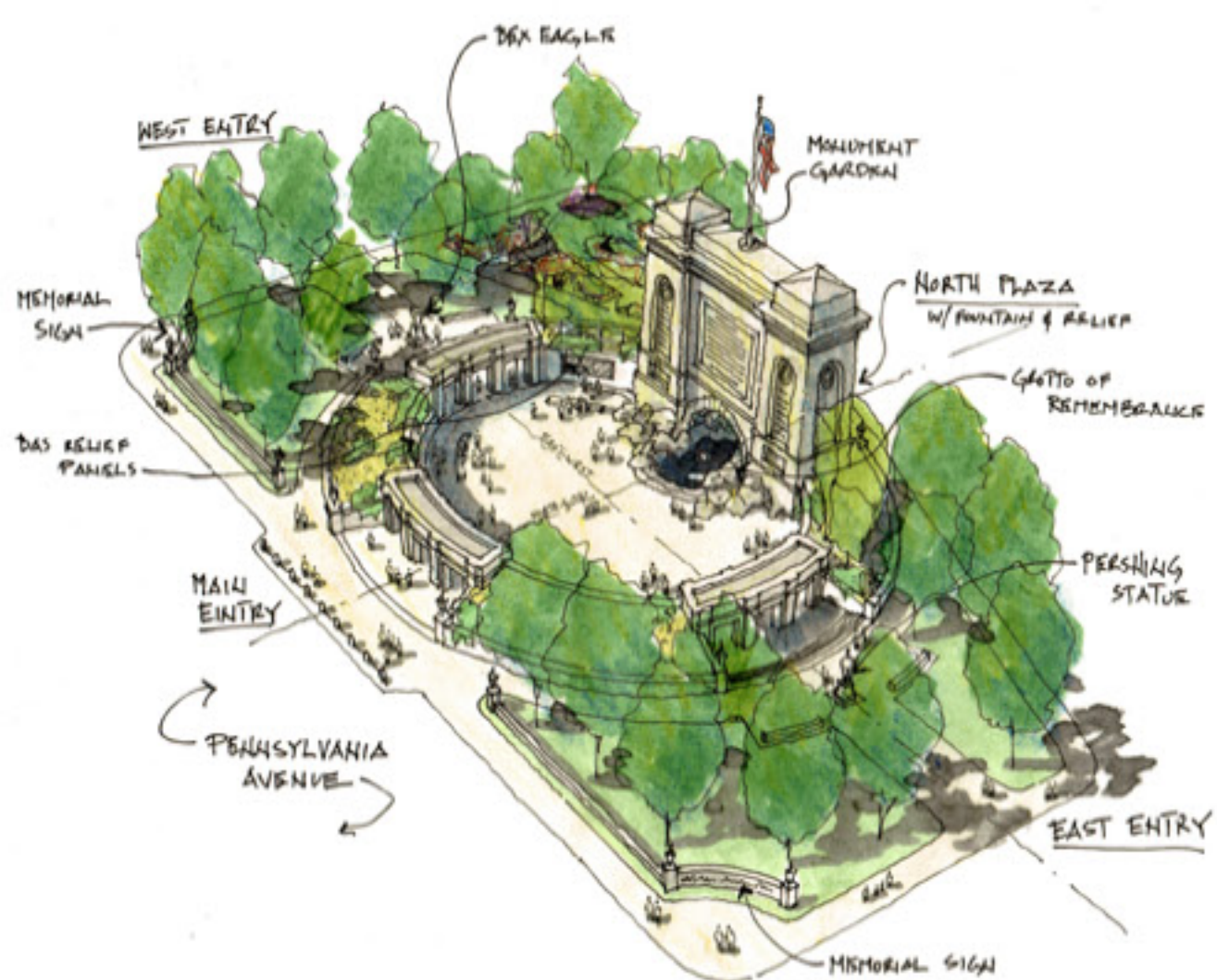
# WORLD WAR ONE MEMORIAL

## GROTTO OF REMEMBRANCE

KIMMEL STUDIO, LLC

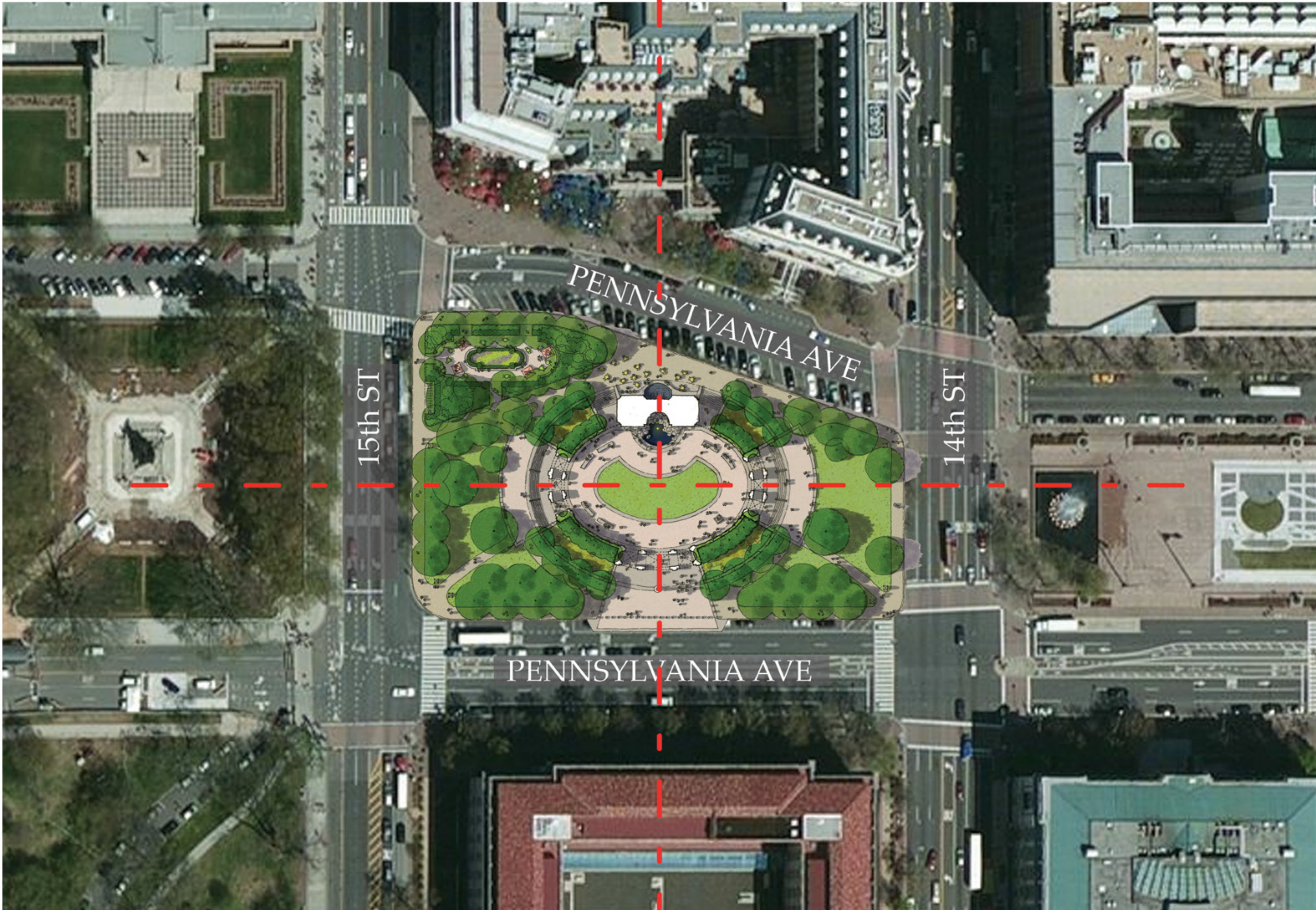
The cruel truth of war is the fact that even the victors suffer great losses. Our World War One Memorial is centered on a majestic granite tower which evokes a triumphal arch; its height and monumentality speaking to the nation's glory and to the heroism and valor of the American men and women who served, fought and died in the conflict. Unlike many war memorials, especially triumphal arches, this design also commemorates the enormous scale of the losses suffered. This is why, instead of the traditional arched gateway, the arch is placed at the base of the tower and becomes the Grotto of Remembrance. A figural gateway to the afterlife. It is within this grotto that the stones sculpturally begin to morph into a natural form as though this is where life joins nature. A still pool of water steps from within offering an opportunity for reflection. At the grotto's entrance burns an eternal flame signifying our perpetual respect for those who served. The heroism of these brave men and women becomes part of the foundation that holds up the great tower that celebrates democracy and liberty with twin glowing lanterns. Through the use and transformation of these iconic forms, this memorial simultaneously evokes the American commitment to democracy and liberty, the bravery of those who served, and the tragedy and magnitude of the losses suffered by the United States during World War One.

### CONCEPT DEVELOPMENT

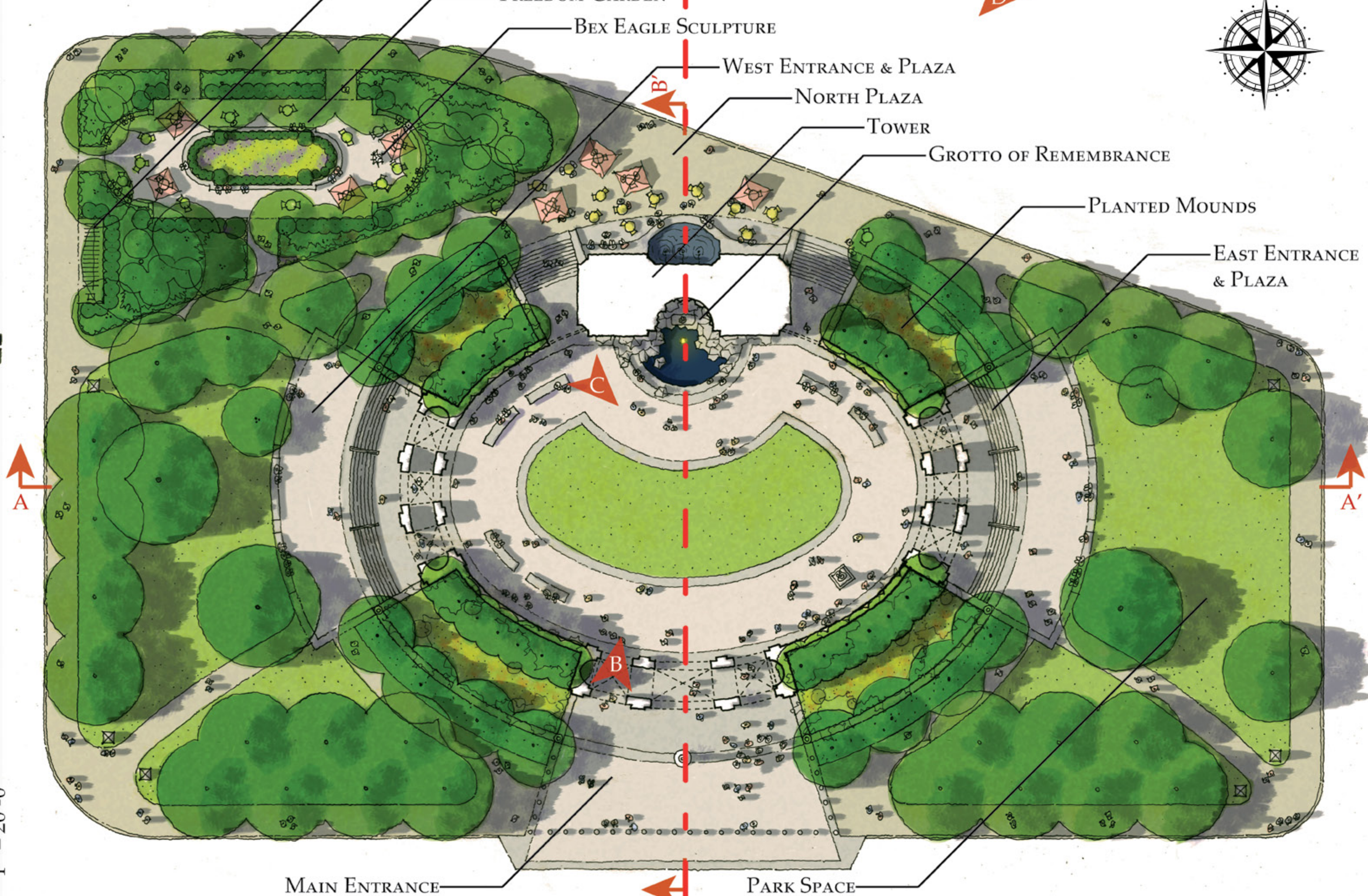


SECTION B-B'

### CONTEXT PLAN | 1"=50'



### SITE PLAN | 1"=20'



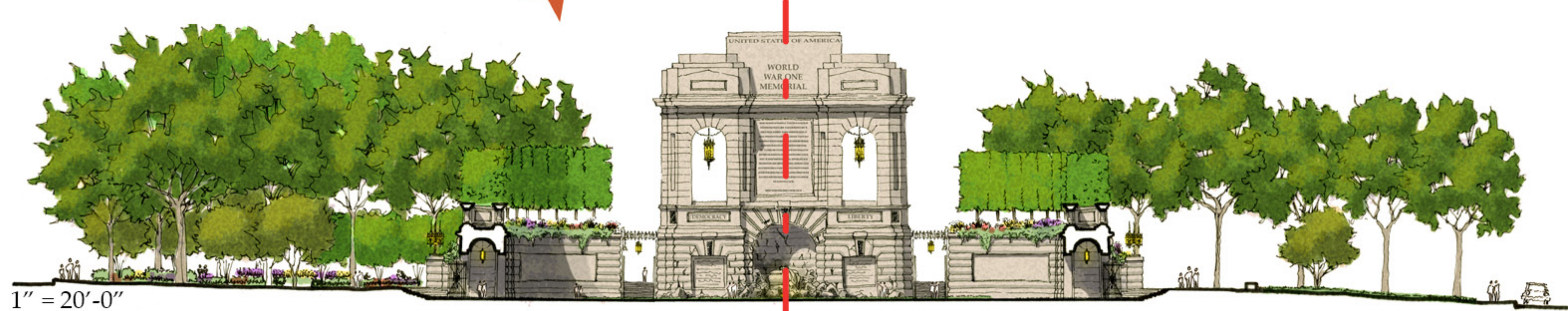
### HISTORIC PHOTOS OF SITE



### PRECEDENTS & INSPIRATION



### SECTION A-A'

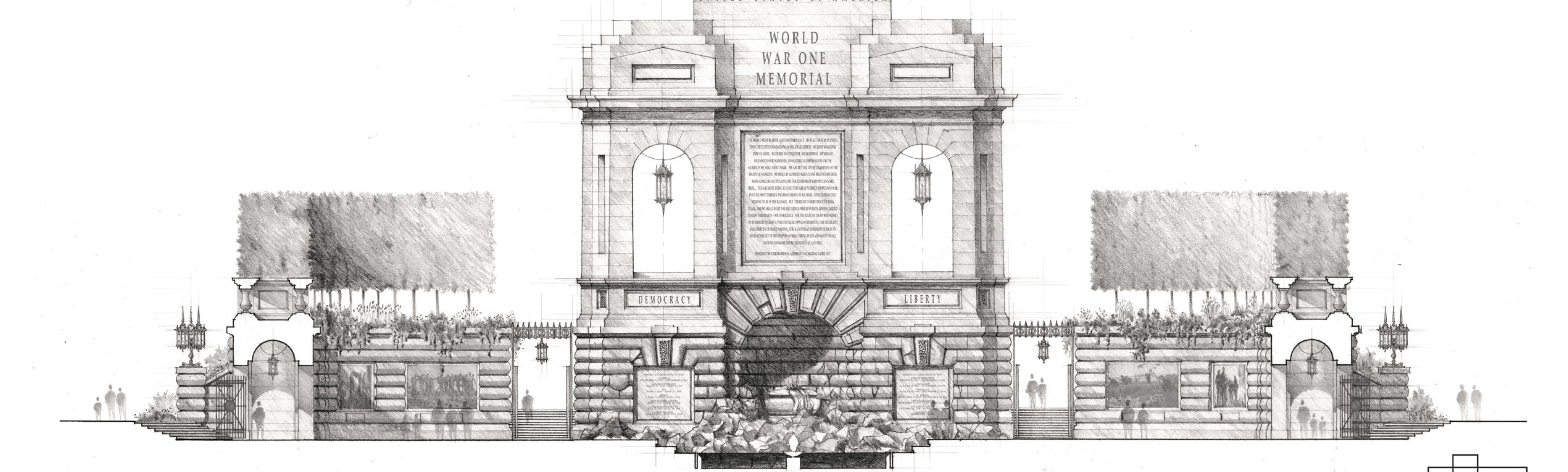




PENNSYLVANIA AVENUE ELEVATION



MEMORIAL SPACE SECTION



EVENING AERIAL



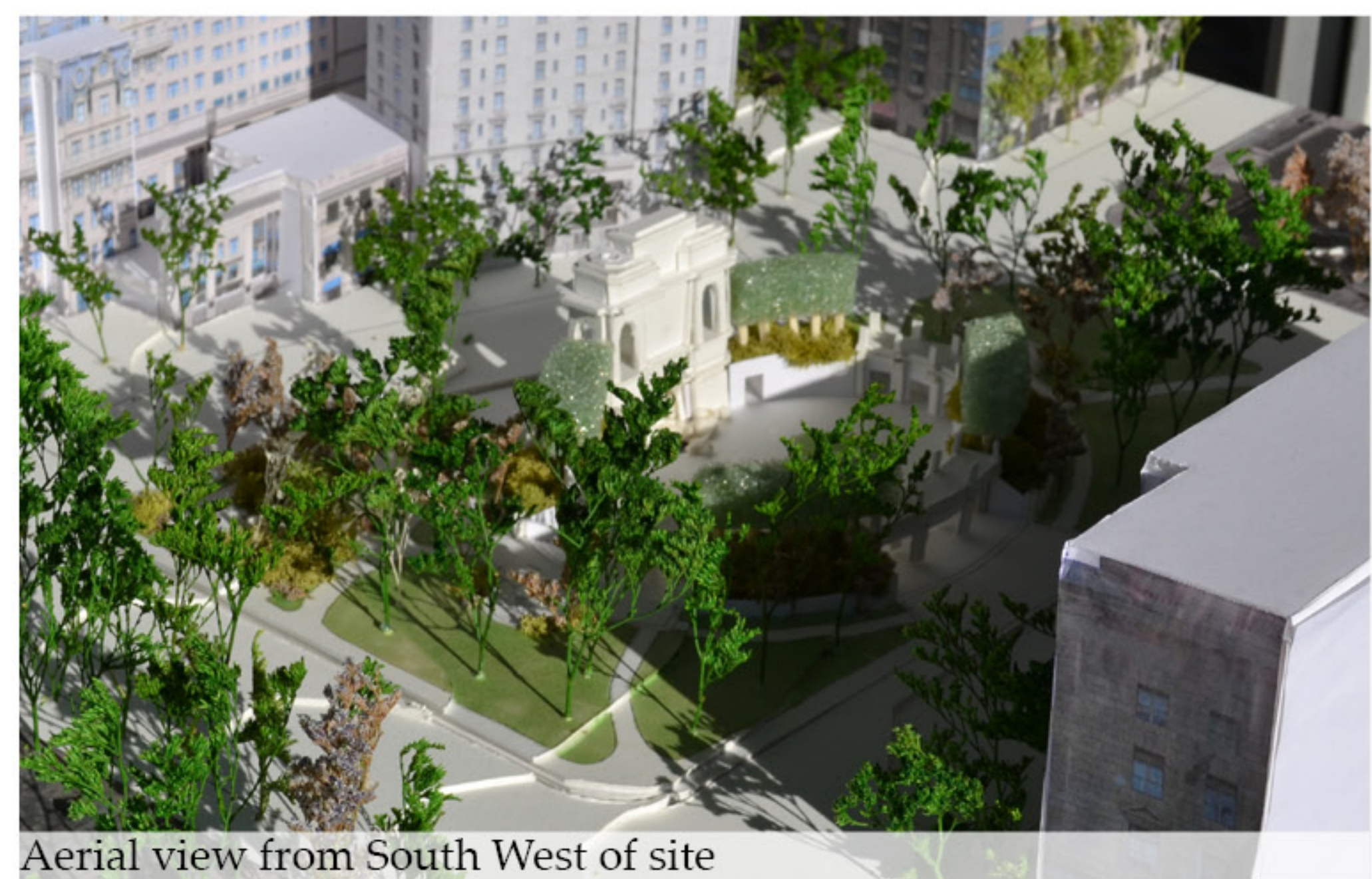




## STUDY MODEL



Aerial view from South East of site

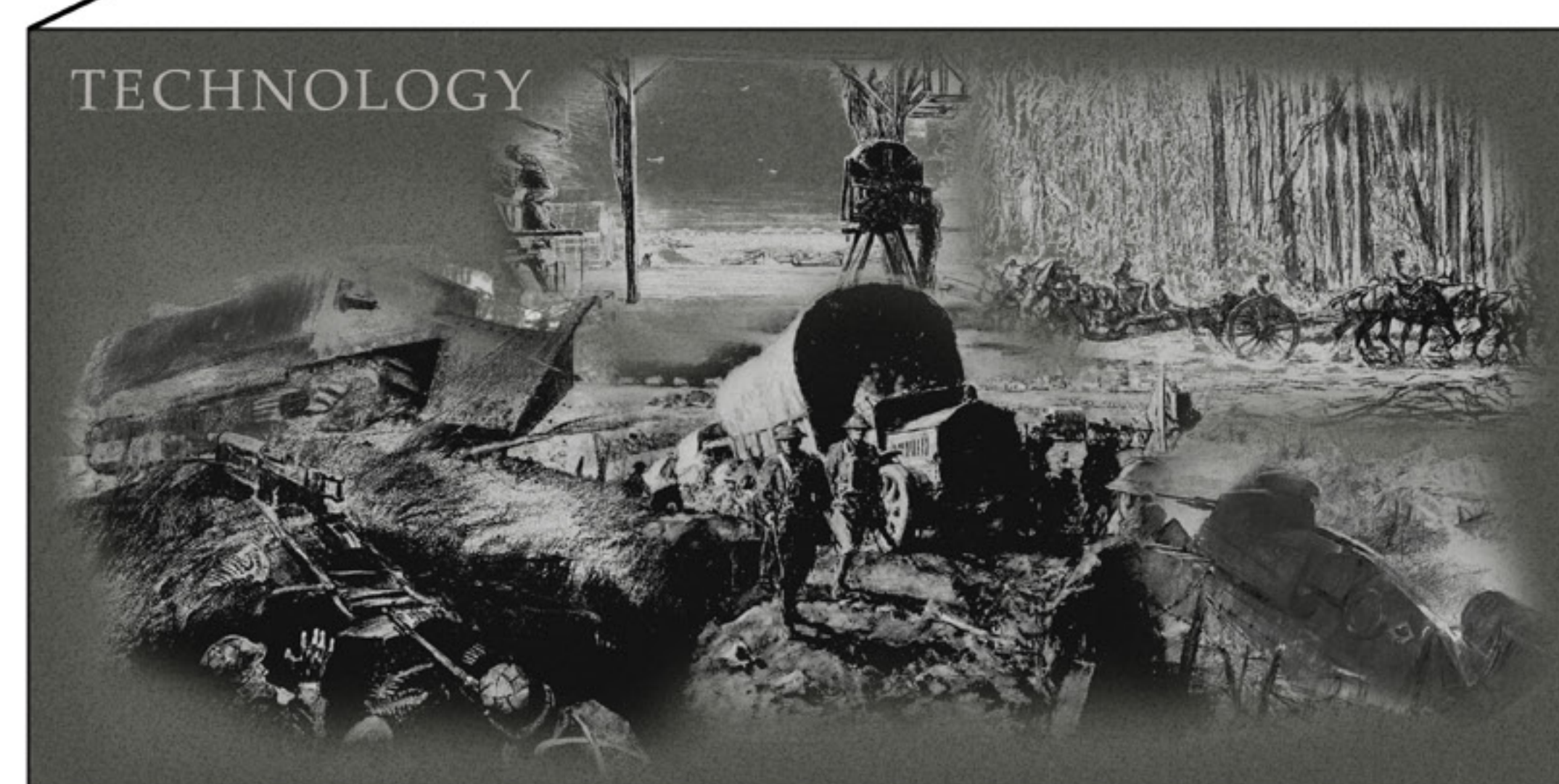
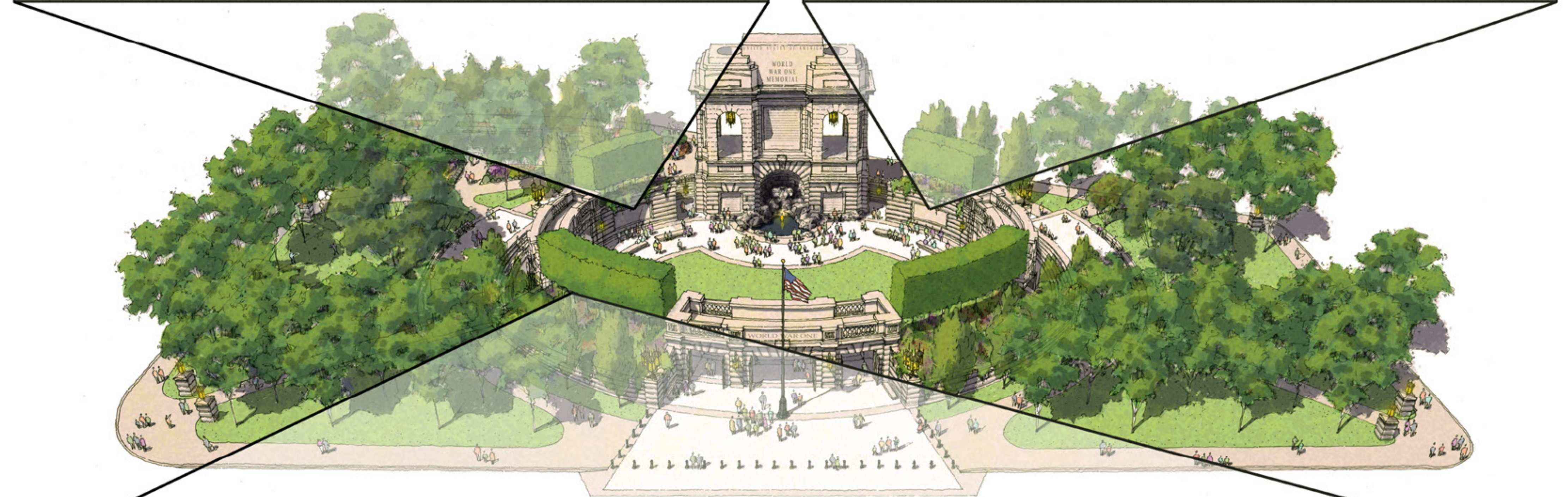
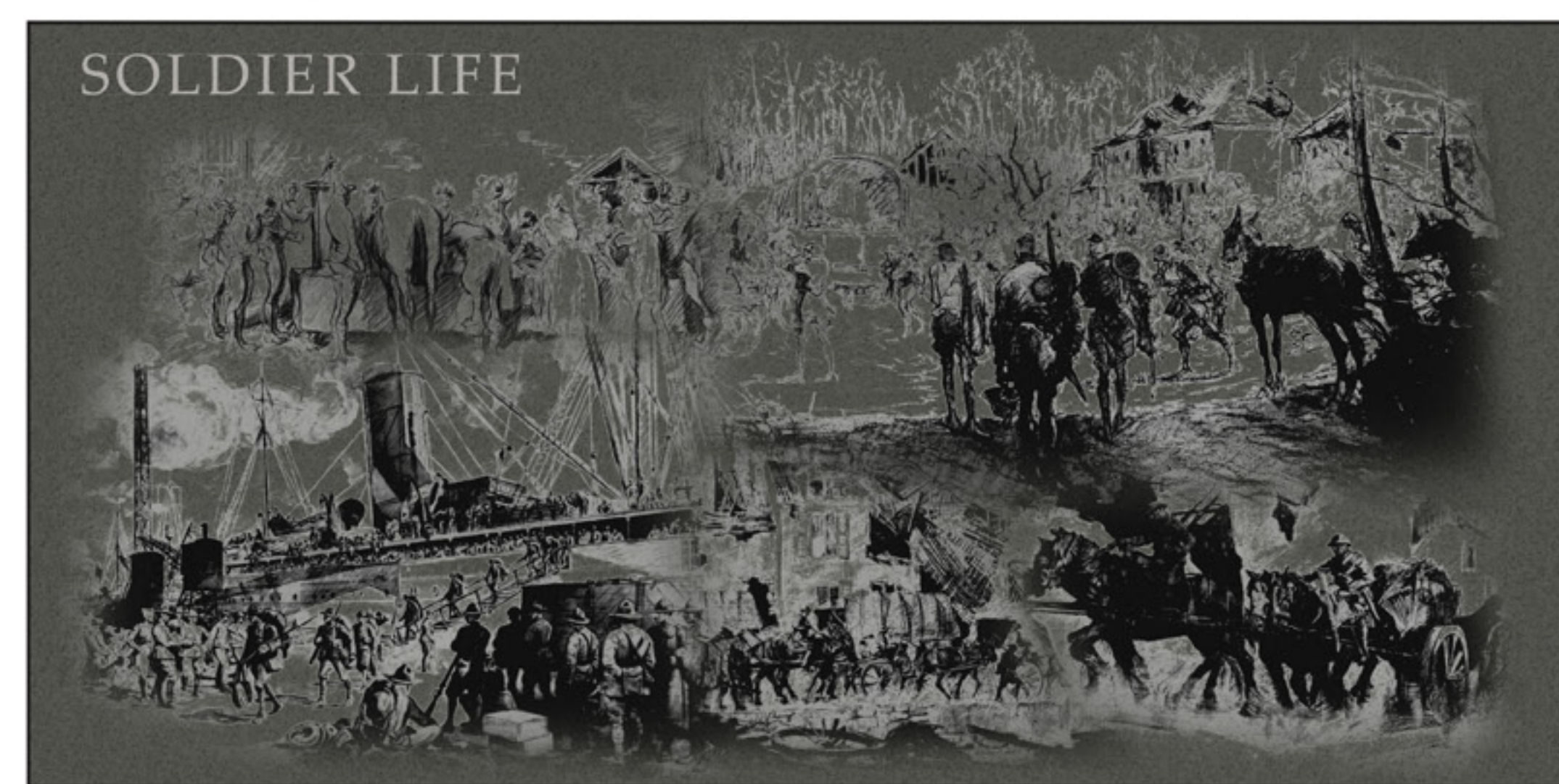


Aerial view from South West of site



Aerial view from North West of site

## RELIEFS



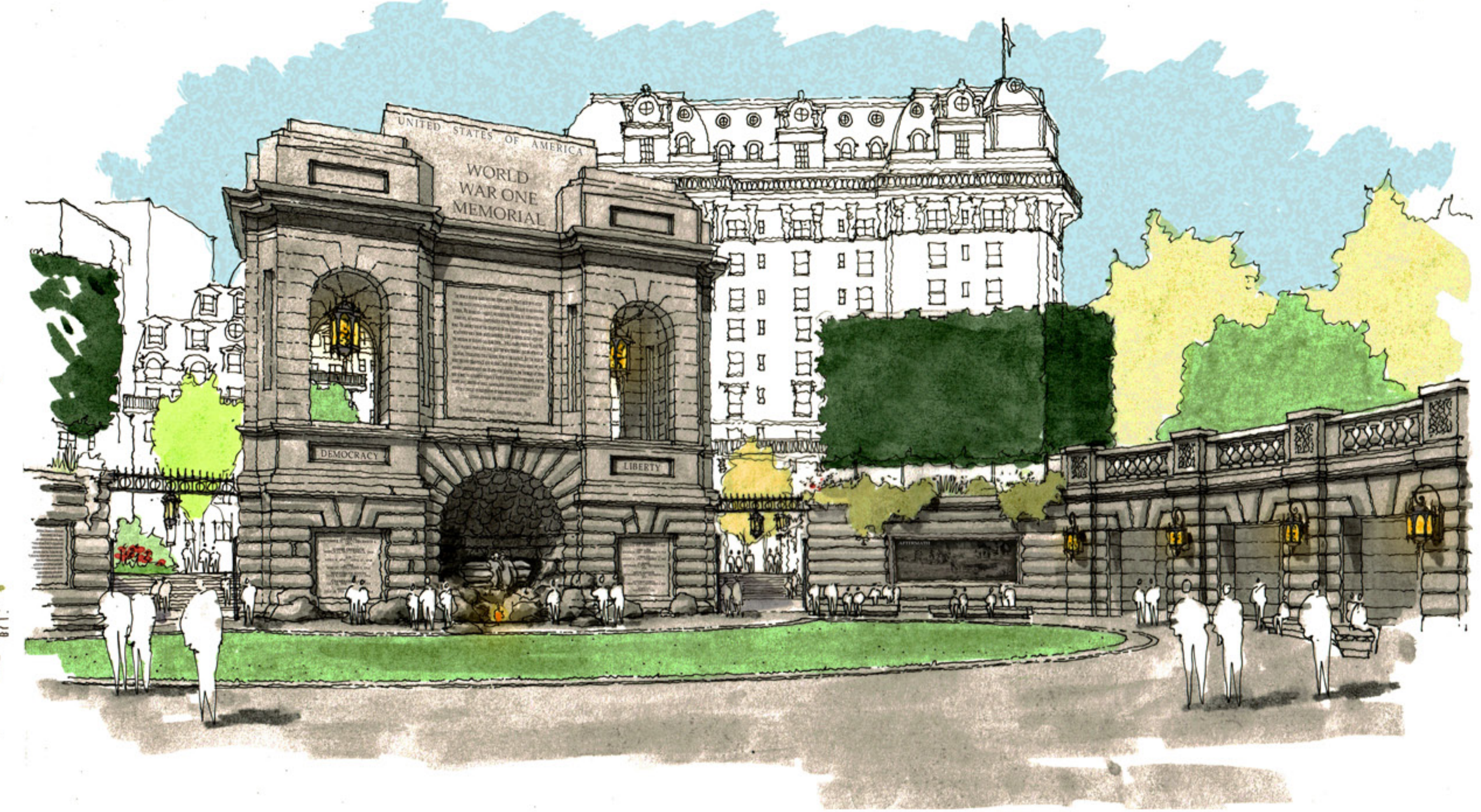
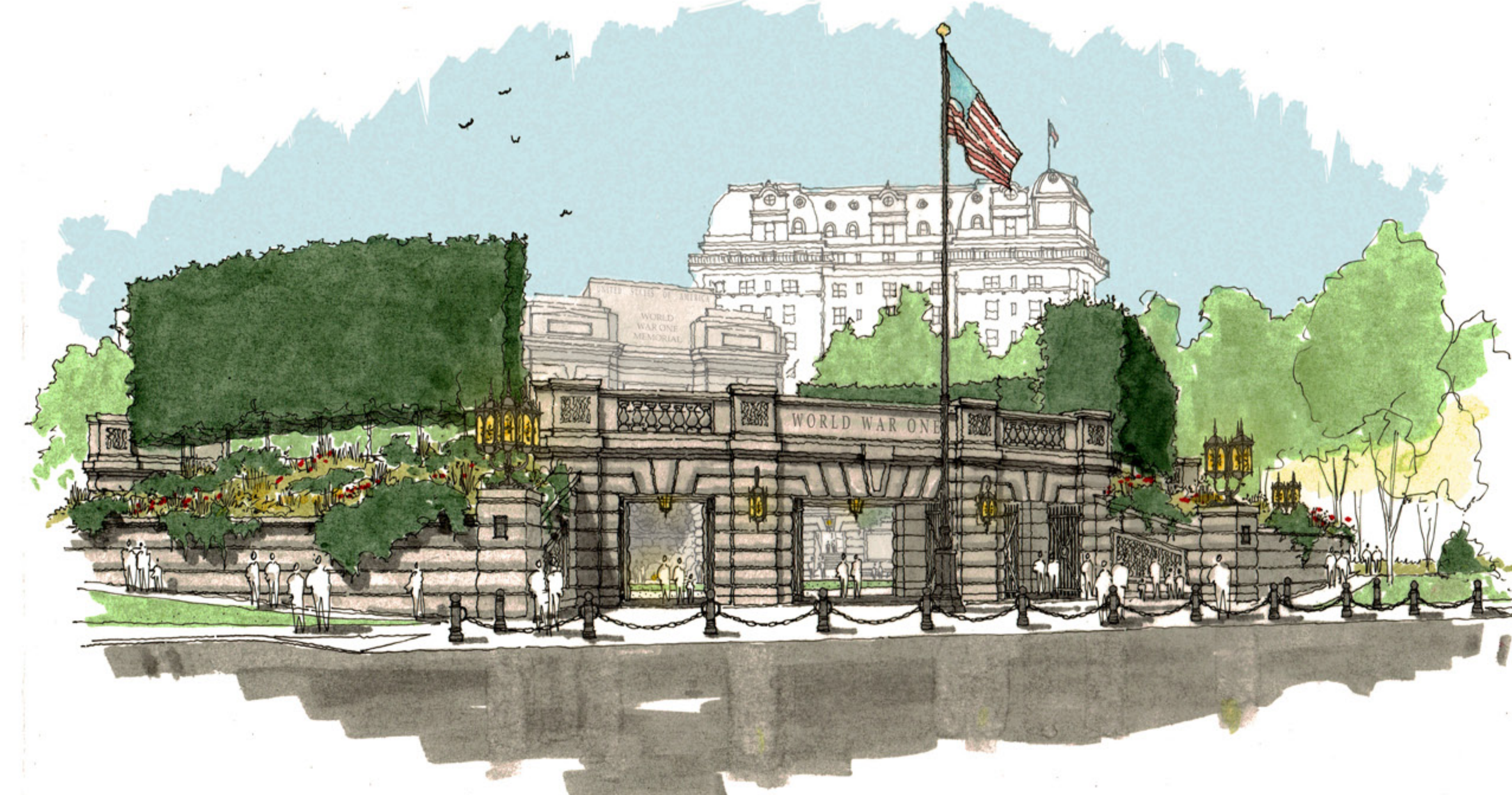
The Reliefs, planned as etchings in granite, are to consist of collages of sketches completed by American artists during the war. These artists, 8 in total, were hired by the War Department to document the war as they saw it first hand based on four subjects: Soldier Life, Technology, Combat, & Aftermath. The Smithsonian has the full collection of images, which would provide an ample amount of options for selecting final imagery. Examples of some of the original drawings are shown on the upper right edge of this display.





A - MAIN ENTRANCE PERSPECTIVE

B - TOWER & GROTTO PERSPECTIVE



C - PERSHING STATUE & WALL PERSPECTIVE

D - NORTH PLAZA PERSPECTIVE

