

### **Remarks on Sites 3-8**

Sites 3-8 are all within the boundaries of Area I and are in close proximity to the National Mall and to existing major memorials. They were appealing for a variety of reasons and were considered strong possibilities by the Eisenhower Memorial Commission (EMC). At least one Commissioner visited each of these sites, and each site was addressed at an EMC meeting. However, these six sites were deleted from further consideration at the March 25, 2004 EMC meeting.

Although these sites are all appropriately prominent for the National Eisenhower Memorial, they were deemed by the Commission to lack either accessibility or feasibility. Furthermore, the remaining two sites more fully satisfied the selection criteria.

## **Remarks on Site #3**

### **Location and Thematic Strengths:**

Site #3 (Site #10 in NCPC's *Memorials and Museums Master Plan*) is located in Constitution Gardens, west of Constitution Gardens Pond and near the corner of 20<sup>th</sup> Street and Constitution Avenue, NW. It is next to the Vietnam Veterans Memorial and close to the Lincoln and World War II Memorials. The National Eisenhower Memorial's closest thematic link at this site would be the World War II Memorial and nearby Lincoln Memorial.

### **Size and Access:**

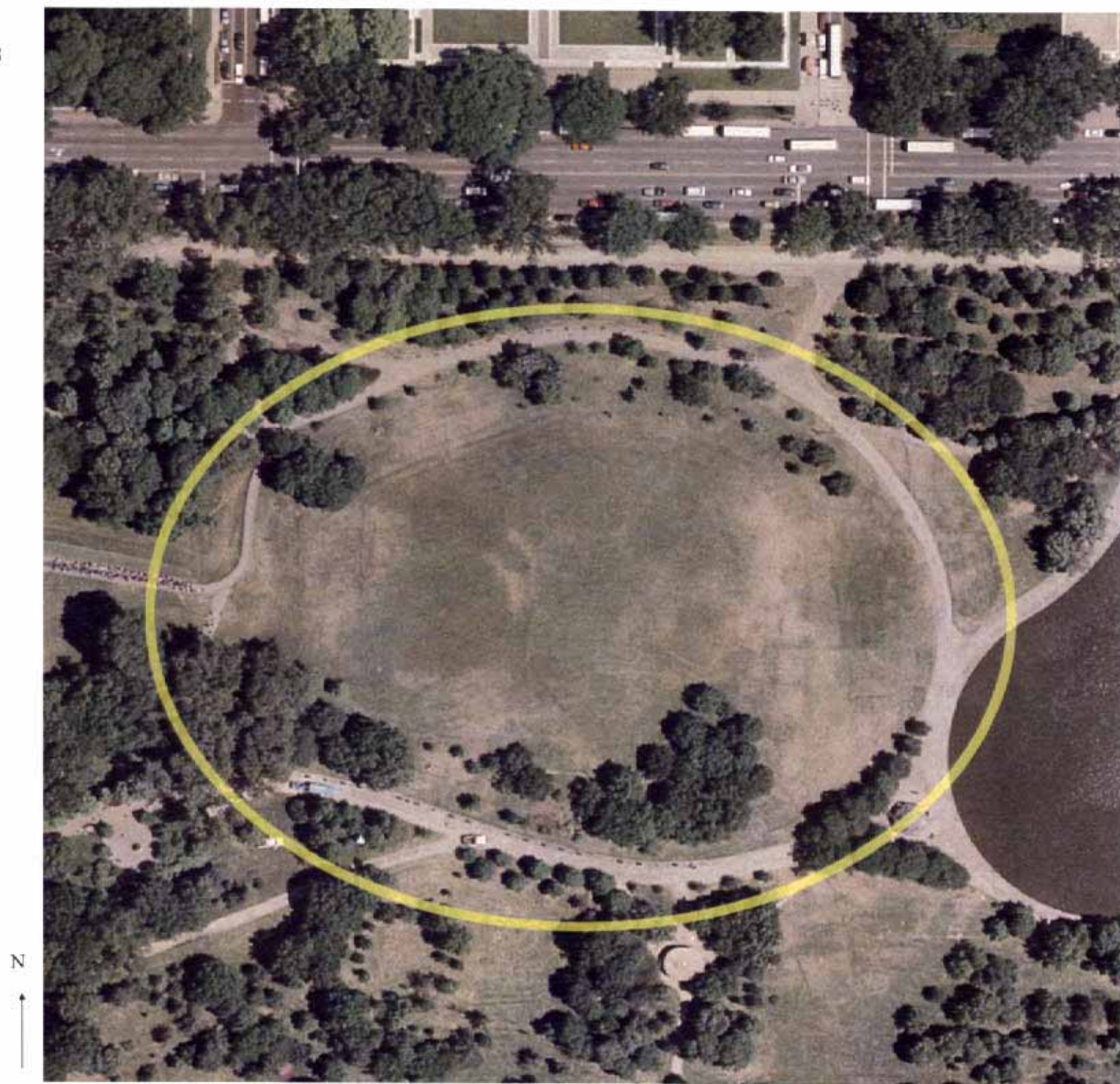
The site sits in an open park area of about 2 acres. Pedestrian access is excellent and the site lies on a major tourist walkway along the Reflecting Pool and to and from the Vietnam Memorial. The site is appropriately prominent for the National Eisenhower Memorial. However, the site offers very little parking and there is no Metrorail station near the area.

### **Reasons for Elimination:**

The Commission determined that the site lacked the ready public access desired for the National Eisenhower Memorial and felt that the site presented a weak thematic context for Eisenhower as president and commander in chief. In addition, on November 17, 2003, Congress established the boundaries for the new memorial exclusion zone, the Reserve, and included this site within them. Site #3 was eliminated from further consideration at the March 25, 2004 Eisenhower Memorial Commission meeting.



Site #3  
Constitution Gardens  
At 20th Street NW  
(not to scale)





### Location:



### Framework Context:



### Vicinity:



### Site Description Summary

This site location is in the western portion of Constitution Gardens, just south of Constitution Avenue, north of the Reflecting Pool, and between the Lincoln Memorial and Washington Monument Grounds west of the National Mall. Although the entire area of Constitution Gardens was considered for memorial development, the western end is the most viable location. This site location between the crest of the hill and the west shore of the lake is generally semi-circular in shape, is bounded by the existing paths and the zone of influence of the Vietnam Veterans Memorial to the west. The overall character of the site is open and natural and the site is currently used as passive park and recreation space.

### Urban Design Conditions

This site is located within the National Mall Environs and is part of the Monumental Corridors component of the Urban Design Framework. The site is within a Special Place (West Potomac Park) and is adjacent to a Special Street (Constitution Avenue). The site location is within walking distance of the Lincoln Reflecting Pool, Rainbow Pool, and several smaller memorials, including the 56 Signers Memorial, the Vietnam Women's Memorial, the approved Black Revolutionary War Patriots Memorial, and the approved World War II Memorial. From the site, prominent views are possible to the Washington Monument. Because of Constitution Garden's strategic location along the National Mall extension, close to various other significant historic and cultural resources, opportunities exist for developing several important and visible memorials in this area.

### Economic Conditions

The economic benefits of siting a memorial within Constitution Gardens would be diffuse, rather than concentrated in any specific neighborhood or area. The area around Constitution Gardens is a combination of institutional and parkland and offers little opportunity to accommodate new economic entities or neighborhood development. A memorial would add to the critical mass of attractions in the National Capital Region and help increase the length of stay for area visitation. However, economic benefits would neither occur primarily at the site nor would they assist with the creation of new businesses in revitalizing neighborhoods.

### Transportation Conditions

The areas surrounding Constitution Gardens currently attract a large number of visitors. The transportation characteristics surrounding the site appear to favor vehicular access rather than public transportation; however, a large number of visitors utilize the Metrorail system to the Mall area and then walk to each attraction. In addition, the parking availability is limited to on-street spaces. Since there is already a synergy between attractions in the area of Constitution Gardens, it is likely that it will be extended to any future memorial on this site. Transportation mode choices will be consistent with the patterns currently present in the area. In the future, this site may be near the Circulator system route, which would greatly improve access to this location.

### Environmental Conditions

The topography of the site varies from rolling to steep slopes, depending on the direction of approach. The site features an open lawn with a few trees near the southern slope. The site's topsoil, foliage, and adjacent lake offer habitat for animals, including squirrels, birds, and ducks. Although the site location receives noise disturbance from airplanes in the flight path over the Potomac River, the site does not suffer from any other adverse air quality characteristics.



### Commemorative Opportunity:

#### Jurisdiction:

Federal – National Park Service

One primary memorial and several smaller memorial site opportunities may exist within Constitution Gardens (to the north of the Reflecting Pool and between the Lincoln Memorial and the Washington Monument Grounds). A major site potential is located at the west end of the lake. This site, preliminarily determined to be between the crest of the hill and the west end of the lake, is limited by the "zone of influence" of the Vietnam Veterans Memorial. The recommended potential primary site should be within two acres in size and be of limited height.

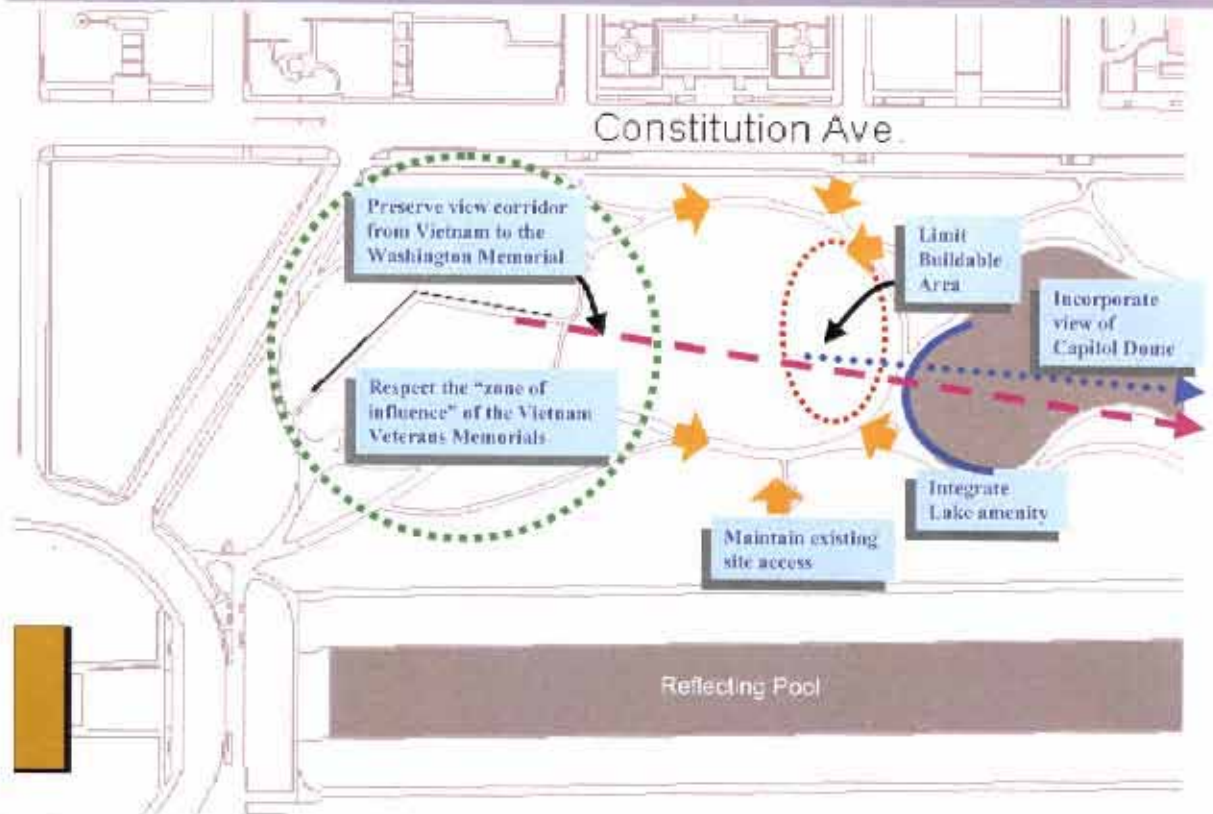
Memorial development affords the ability to incorporate views of federal elements, such as Constitution Lake and the Washington Monument. Memorial development that respects the zone of influence and settings of the surrounding memorials can enhance the finished landscape of Constitution Gardens. Memorial development could incorporate existing infrastructure and amenities in the area.

The opportunity exists to reinforce the existing quality of Constitution Gardens as a finished landscape. The paved area to the east of the lake, north of the World War II Memorial, is not considered to be a future memorial site.



This view is looking east from the crest of the hill toward Constitution Lake and the Washington Monument. The Vietnam Veterans Memorial is located to the west, on the other side of the hill, and the Reflecting Pool is to the south.

### Design Considerations:



1. Potential future memorials sited within Constitution Gardens must respect the existing landscape setting of West Potomac Park and, more specifically, the informal landscape character of Constitution Gardens. Development of one site opportunity may preclude another.

2. Many sites, including the primary site, are highly visible from Constitution Avenue and from various locations across the lake. They are also visible from one another. A future memorial should be of modest height and scale in order to maintain existing views and view corridors. New memorials should take advantage of existing opportunities for enhancing visual connections between existing and proposed memorials.

3. Future development must respect existing adjacent memorials by limiting the number and size of available

sites and the scale and extent of memorial-related development. The future memorials should reflect appropriate limitations on massing and height. Memorials should not encroach upon or compete with one another. Memorials should be primarily "green" with paved areas limited to circulation elements. The opportunity exists to integrate water into the design of the primary memorial site.

4. Future memorials should take advantage of existing infrastructure although the pathways and edge of the lake could be altered at the west end. They should integrate existing circulation elements into the design and incorporate the open space, water, and woodlands amenities currently present in the area. Parking and vehicular access to these sites is limited to that which is currently available.

## **Remarks on Site #4**

### **Location and Thematic Strengths:**

Site #4 (Site #18 in NCPC's *Memorials and Museums Master Plan*) is located off of Independence Avenue, SW, south of Ash Road. It lies south of the Reflecting Pool between the World War I Memorial and the Korean War Veterans Memorial. The World War II Memorial is also close to the site, providing a strong thematic link to Eisenhower's military legacy. The U.S. Park Police Stables currently reside there.

### **Size and Access:**

The site sits in a wooded area of 1-2 acres. Pedestrian access is good and the site falls on a tourist route to and from the Lincoln Memorial. The site is appropriately prominent for the National Eisenhower Memorial. However, there is little parking in the area, and it is quite far from any Metrorail station. Also, the wooded nature of the site makes it less accessible to pedestrians than a more open site.

### **Reasons for Elimination:**

The site offers limited access, and the stables that currently occupy the site would have to be relocated. Thematically, the site lacks a contextual link to Eisenhower's presidential legacy. This site also lies within the boundaries of the Reserve as established November 17, 2003. Site #4 was eliminated from further consideration at the March 25, 2004 Eisenhower Memorial Commission meeting.



Site #4  
South of Ash Road  
off Independence Ave. SW  
U.S. Park Police Stables  
(not to scale)

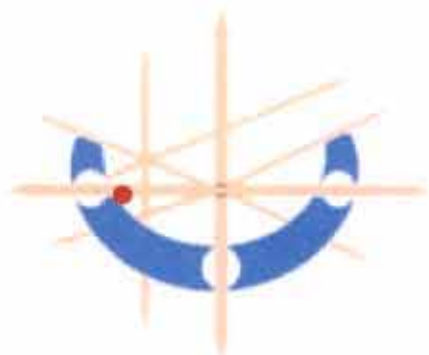




## Location:



## Framework Context:



## Vicinity:



## Site Description Summary

This prime opportunity area is located within the National Mall Environs on Ash Road, just north of Independence Avenue. The area is situated between the zones of influence of the Korean War Veterans and D.C. World War I Memorials. The site currently is used as the horse stables for the U.S. Park Police and is surrounded by open space and recreation uses.

## Urban Design Conditions

This site location is consistent with the Monumental Corridor and Waterfront Crescent component of the Urban Design Framework. The site is located in close proximity to numerous memorials and cultural resources. It is strategically located within the historic context of the Mall, adjacent to Independence Avenue a Special Street, and near the cultural landscape of West Potomac Park. These strong urban design factors, as well as the site's location in an area with a strong symbolic and visual identity, offer the potential for the site to accommodate a significant memorial.

## Economic Conditions

The economic benefits of siting a memorial near Constitution Gardens would be diffuse, rather than concentrated in any specific neighborhood or area. The area around Ash Road is a combination of institutional and parkland uses and offers no opportunity to accommodate new economic entities or neighborhood development. A memorial would add to the critical mass of attractions in the National Capital Region and help increase the length of stay for area visitation. However, economic benefits would neither occur primarily at the site nor would they assist with the creation of new businesses in revitalizing neighborhoods.

## Transportation Conditions

This site has limited available public transportation and parking opportunities. It is located near Independence Avenue, which is a major vehicular corridor, so it has good regional accessibility. However, there are few parking opportunities within a reasonable distance of the site with the exception of limited on-street parking. A potential water transportation dock could provide water access within approximately 1,000 feet (which could be connected to the Circulator system at an Intermodal Station). The Circulator system would most likely be routed along Independence Avenue, adjacent to the site and would provide an excellent public transportation access route. The area surrounding this site currently accommodates a large volume of visitors who would access this site by foot.

## Environmental Conditions

The site location features dense vegetation surrounding its edges, which offers habitat for animal species. There are no water resources immediately adjacent to the site location. The site is not affected by significant noise or air pollution. Likewise, there is no evidence of previous industrial uses or environmental contamination on or near the site.



**Commemorative Opportunity:****Jurisdiction: National Park Service**

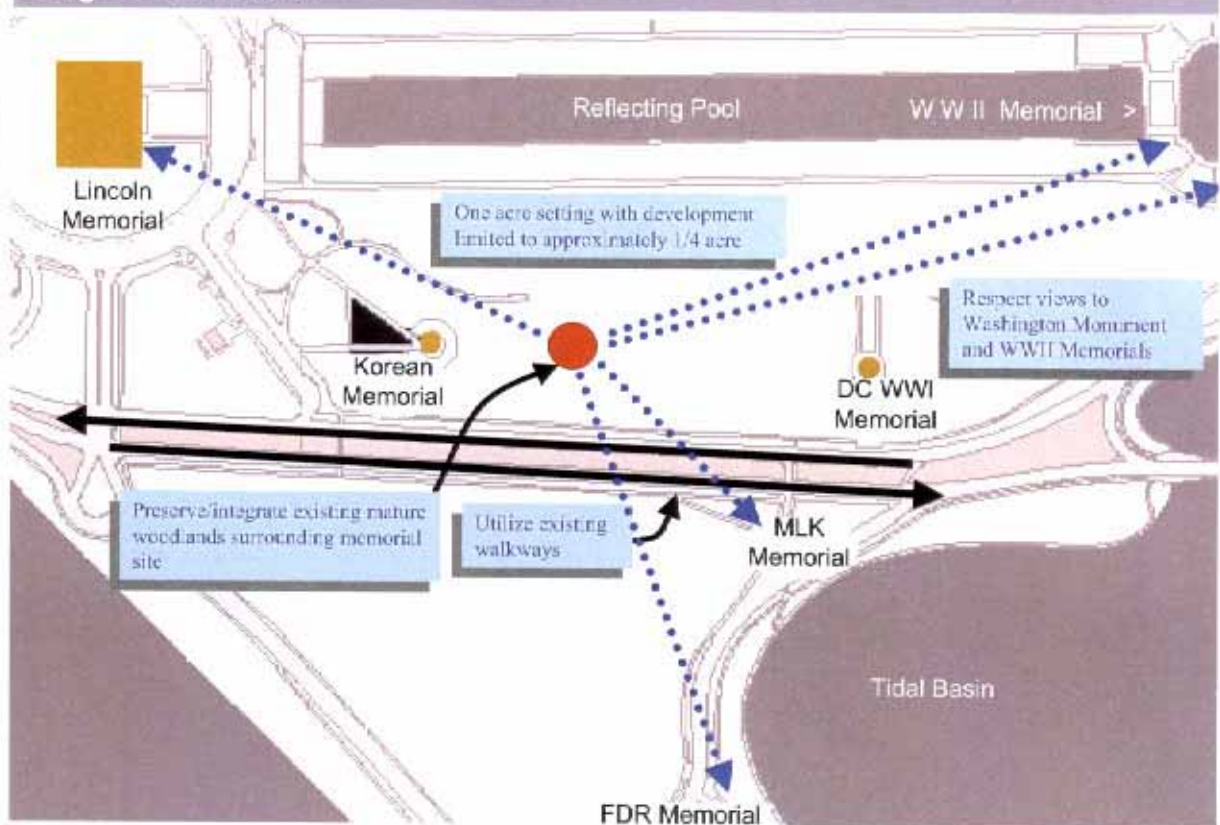
A potential primary site opportunity exists on the current location of the National Park Service (NPS) stables facility (approximately equidistant between the Korean War Veterans Memorial and the District of Columbia's World War I Memorial pavilion). The site setting is less than one acre. The site has the potential to accommodate a memorial of limited size and visibility.

The historic context of the Mall, the Special Street status of Independence Avenue, and the natural landscape in West Potomac Park must be preserved in any future redevelopment of this site location for memorial use. Memorial development on the site could support the design objectives of the L'Enfant and McMillan Plans while enhancing the landscape of West Potomac Park.

From an access and transportation perspective, a memorial at this location would complement the existing attractions and add to the existing synergy. In terms of environmental factors, memorial development would not likely require grading, filling, or slope stabilization. However, memorial development would require the removal of the existing stables and could require various utility improvements.



View looking southeast to the National Park Service Stables in the southern section of the Mall. The proximity of other prominent memorials in the vicinity provides a unique commemorative opportunity that must consider the relationship of adjoining uses as any potential memorial plan is developed.

**Design Considerations:**

1. The design principles of the historic L'Enfant and McMillan Plans may be enhanced through the appropriate placement and design of a memorial at this location.

2. As the site is within the historic context of the Mall and West Potomac Park, a future memorial should respect and complement the historic landscape setting.

3. Future memorial development must respect adjacent memorials. The relatively small size of the site and its proximity to two other prominent nearby memorials suggest a memorial of limited scale and extent with assumed limitations on massing and height. Memorial development is restricted to an area equivalent to that of the adjacent District of Columbia World War I Memorial.

4. Consideration should be given to the axial relationship of the site with 20th Street to the north. The memorial might also be placed on the axis of the planned to-be-relocated West Basin Drive (immediately to the west of the Martin Luther King, Jr. Memorial).

5. The future memorial should take advantage of existing infrastructure. It should respect and preserve the adjacent existing amenities of parkland and woodlands, and should integrate existing circulation elements. The existing trees (except for the white pines) should be incorporated into the memorial's siting and design.

6. Access to the memorial site would be limited to that available to adjacent sites; no additional parking will be provided in the development of this memorial.

## **Remarks on Site #5**

### **Location and Thematic Strengths:**

Site #5 (Site #6 in NCPC's *Memorials and Museums Master Plan*) is located at 23<sup>rd</sup> Street and Constitution Avenue, NW, along Rock Creek Parkway and south of the Theodore Roosevelt Bridge. It is close to the John F. Kennedy Center for the Performing Arts, the Lincoln Memorial, and the Vietnam Veterans Memorial, and it lies just north of the National Mall.

### **Size and Access:**

The site sits in an open, natural area with some trees along the outskirts and totaling one quarter acre to 2 acres. It has decent pedestrian access since it is reasonably close to major existing memorials, and there is some parking in the area. However, it is not close to any Metrorail stations.

### **Reasons for Elimination:**

This site was secured by the United States Institute of Peace in 2004, and was therefore unavailable for the National Eisenhower Memorial. This site also lies partially in the Reserve. Site #5 was eliminated from further consideration at the March 25, 2004 Eisenhower Memorial Commission meeting.



Site #5  
23rd Street,  
Constitution Avenue &  
Rock Creek Pkwy. NW  
(not to scale)

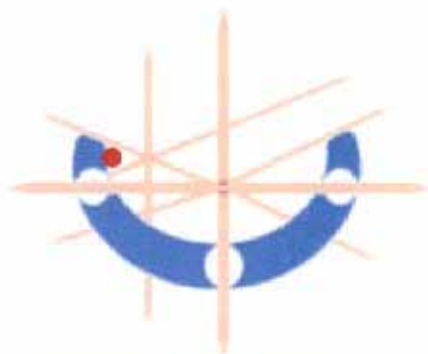




## Location:



## Framework Context:



## Vicinity:



## Site Description Summary

This multiple site location is along Rock Creek Parkway, northwest of the Lincoln Memorial and in the National Mall environs. The primary site location is located on the Potomac River Waterfront between the Theodore Roosevelt and Arlington Memorial Bridges. Other potential sites include those located near the Constitution Avenue axis, the "belvedere" site at the terminus of Constitution Avenue on the Potomac, and a focal point site at the northeast terminus of the Roosevelt Bridge. The belvedere and parkway drive to the Lincoln Memorial are part of the design of Memorial Bridge and the related watergate steps.

## Urban Design Conditions

This site location is consistent with the Commemorative Focus Area at the western edge of the Waterfront Crescent element of the Memorial Framework. The site location is situated between the Theodore Roosevelt and Arlington Memorial Bridges along Rock Creek Parkway and the Potomac River. It also is located along both sides of Constitution Avenue extended between the National Mall and the Kennedy Center. This location offers sweeping views of the Potomac River and Lincoln Memorial.

The sites at the eastern terminus of the Roosevelt Bridge offers a primary gateway opportunity, as does the belvedere site at the implied western end of the Constitution Avenue axis. The site's strategic location near many historic, cultural, and environmental resources offers the potential for both a major destination memorial and several smaller memorial opportunities. Most of these sites should be considered after the Roosevelt Bridge approach ramps are reconstructed in the future. These actions will potentially extend the alignment of Constitution Avenue to the Potomac River.

## Economic Conditions

As parkland and open space, the Potomac River Waterfront sites offer little on-site economic development potential. The economic value of these sites is to aggregate with other waterfront attractions to create a critical mass of small contributing memorials to support greater capital area tourism and amenities. Few commercial or residential areas stand to gain directly by the addition of a single memorial on the Potomac River Waterfront sites.

## Transportation Conditions

The transportation modes that would facilitate access to and from this site are passenger vehicles, the water transportation system, and the Circulator system. Parking is limited to on-street spaces. In order to encourage use of the water transportation system, wayfinding signs should be provided between the dock and the site. With limited pedestrian and parking facilities in the vicinity, the site may be suitable for a smaller, non-destination memorial. With potential future redesigned circulation systems, the access system for the site could be improved to accommodate a moderate scale memorial.

## Environmental Conditions

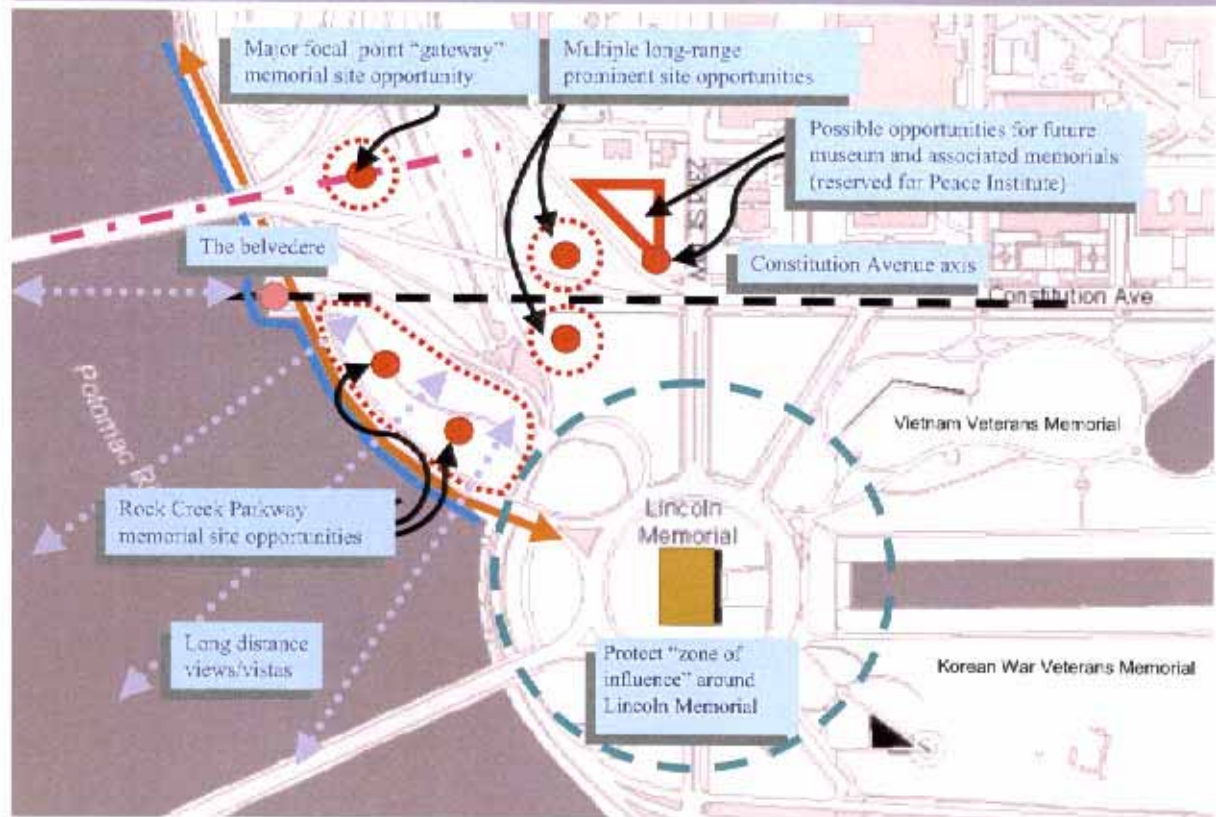
The site location is a combination of an open, natural land area and roadway network. Specifically, the rolling lawns and tree groves along the Potomac River Waterfront merges with the roadway network of the Rock Creek Parkway and the Theodore Roosevelt Bridge. The traffic associated with this roadway creates some environmental impacts on the site, in the form of noise, noxious fumes, and adverse air quality.



**Commemorative Opportunity:****Jurisdiction: Federal – National Park Service**

This location includes both current and future site opportunities of varying size in and around the Theodore Roosevelt Bridge ramps, including the existing "belvedere" at the visual terminus of Constitution Avenue at the Potomac River. The area around these sites includes developed parkland and informal multi-purpose recreational uses. Memorial site opportunities approximate ¼ acre; the belvedere site is less than ¼ acre. Due to close proximity of potential sites, the development of one site may preclude the future development of other adjoining sites.

Memorial development offers the potential to enhance this gateway entrance into the L'Enfant City from the Roosevelt Bridge, while respecting the zone of influence around the Lincoln Memorial. Development should enhance the surrounding natural and historic features and incorporate existing recreation areas. Development should also incorporate existing long-distance views across the Potomac River, as well as offer public access from the water to the site, possibly as a future water taxi stop. Depending on the specific placement, memorial development could necessitate limited grading/filling operations and utility improvements on the sites. If the sites were to be developed as destination memorials, a pedestrian crossing across the Rock Creek Parkway and an adequate sidewalk system would be necessary.

**Design Considerations:**

The view above depicts a vantage point looking northeast from Memorial Bridge to the Lincoln Memorial and the Rock Creek Parkway. Memorial site opportunities exist along the Rock Creek Parkway, as well as at the belvedere site, immediately west of the area depicted.

1. The existing belvedere is an appropriate site for memorial statuary or a sculptural element, such as a major fountain. Other future sites might accommodate a major landscape solution and, on one site, a possible memorial or museum building, as suggested in Legacy. These sites offer significant waterfront opportunities. Memorial design should preserve the passive and informal qualities of the waterfront, the open vistas across the Potomac River to Virginia and, the natural environment of Rock Creek and West Potomac Parks.

2. Memorial design and development should not compromise the public's use of parkland and open space, eliminate multi-purpose recreational fields, or encroach upon or compete with the Lincoln or Vietnam Veterans Memorials. A future memorial presents the opportunity to identify the gateway entrance from the Theodore

Roosevelt Bridge to the L'Enfant City and the Monumental Core.

3. Memorials should provide civic enhancement and complement the character of the waterfront parkland and Rock Creek Parkway. Waterfront memorials provide vistas across the river. Memorials here would take advantage of the water taxi at the Kennedy Center. Memorials should incorporate pedestrian-oriented amenities for casual gathering, as well as opportunities for viewing from nearby roadways. There are existing opportunities for pedestrian amenities and limited services for tourists at this end of West Potomac Park.

4. Existing buildings in this vicinity including the Naval Observatory, might provide opportunities for related educational or museum facilities.

## **Remarks on Site #6**

### **Location and Thematic Strengths:**

Site #6 is located on Capitol Hill at the intersection of Constitution and Pennsylvania Avenues and 1<sup>st</sup> and 3<sup>rd</sup> Streets, NW. It lies just north of the Capitol Reflecting Pool and east of the National Gallery of Art's East Gallery. Two other presidential memorials lie in the same area at the foot of Capitol Hill, one to President Grant and one to President Garfield.

### **Size and Access:**

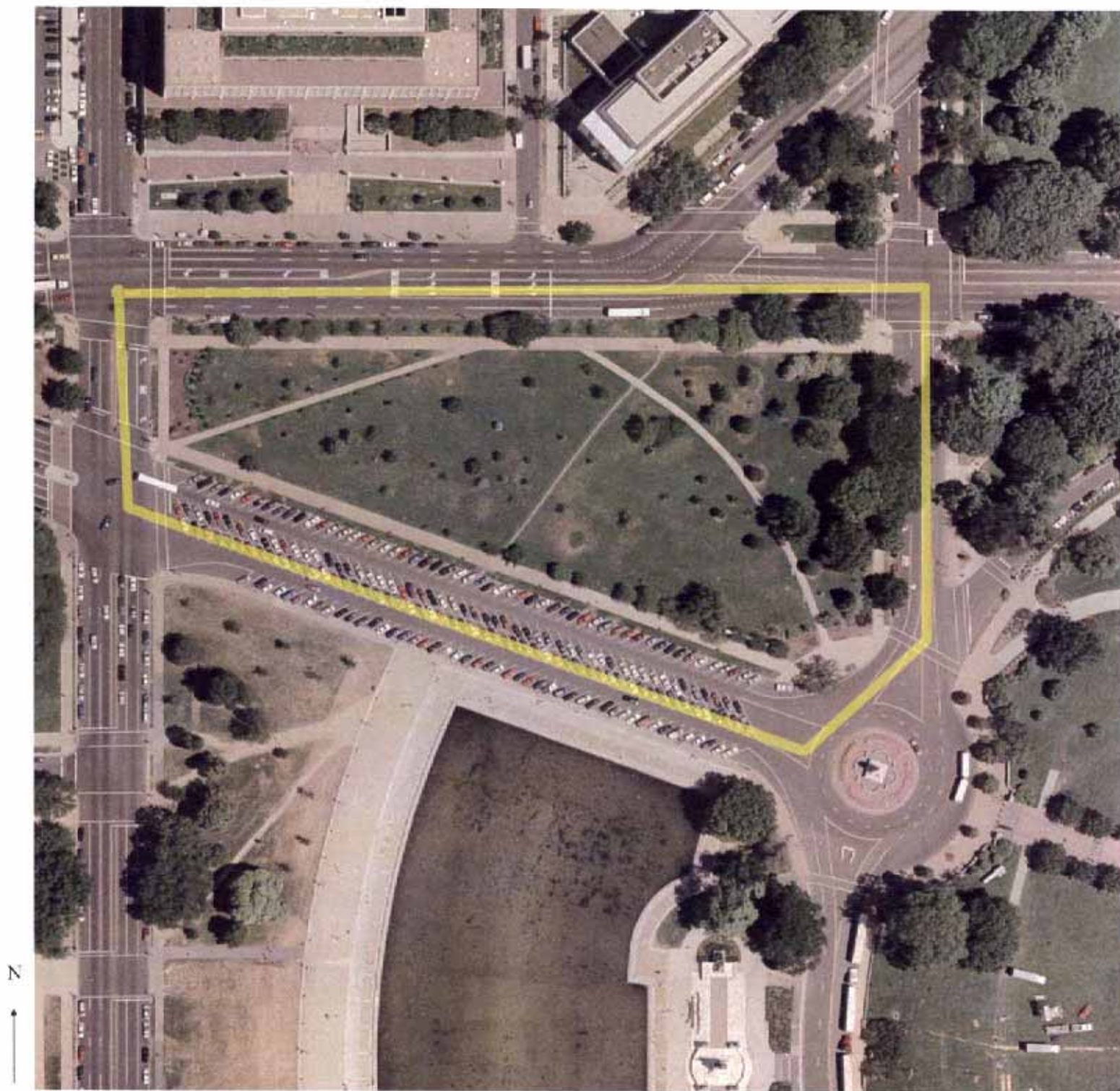
The site sits in an open park area with few trees and totals 2-3 acres. It can be easily accessed by pedestrians walking to and from the Capitol. It is somewhat close to two Metrorail stations, but is inaccessible to automobiles. The site is very prominent and is a link between the National Mall and the Capitol.

### **Reasons for Elimination:**

However, the Commission learned that there is a moratorium on erecting memorials on Capitol Hill, and this site is under the jurisdiction of Congress and the Architect of the Capitol. These restrictions create special difficulties in obtaining approval for the site, and could contribute to making it controversial. Site #6 was eliminated from further consideration at the March 25, 2004 Eisenhower Memorial Commission meeting.



Site #6  
Pennsylvania &  
Constitution Aves.  
1st & 3rd Sts. NW  
(not to scale)



## **Remarks on Site #7**

### **Location and Thematic Strengths:**

Site #7 is located at the northwest corner of Constitution Gardens, at 17<sup>th</sup> Street and Constitution Avenue, NW. It is a part of the National Mall and lies just north of the World War II Memorial and across the Pond from the Vietnam Veterans Memorial. It also lies in close proximity to the Ellipse and the White House.

### **Size and Access:**

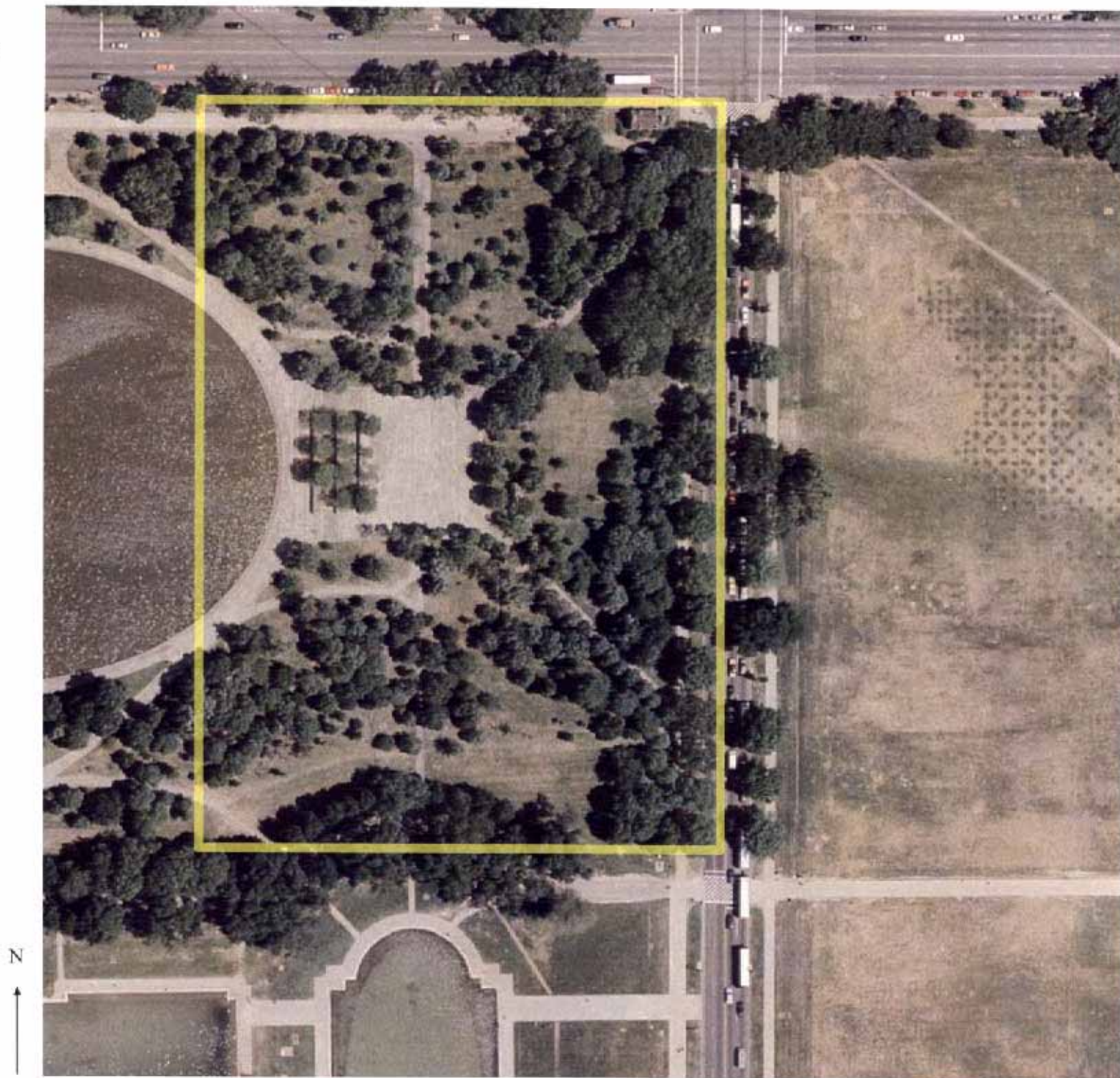
This site sits in a partially wooded area and offers 1-1.5 acres of usable space. It can be easily accessed by pedestrians walking along the Mall, but is not close to any Metrorail stations or parking areas. The site is quite prominent and has been considered as a prime choice for other memorials.

### **Reasons for Elimination:**

The EMC was advised by the Commission on Fine Arts (CFA) that this site is not considered a future memorial site, and lies in the Reserve as defined by Congress in 2003. Site #7 was eliminated from further consideration at the March 25, 2004 Eisenhower Memorial Commission meeting.



Site #7  
Constitution Gardens  
Constitution Ave.  
At 17th Street NW  
(not to scale)



## **Remarks on Site #8**

### **Location and Thematic Strengths:**

Site #8 is located at the northwest entrance of Inlet Bridge on West Potomac Park, off of Ohio Drive, SW. It lies across the bridge from the Jefferson Memorial and in close proximity to the Franklin D. Roosevelt Memorial. The Lincoln Memorial, the Washington Monument, the Capitol Dome, and the Pentagon are all within view of the site.

### **Size and Access:**

The site sits on the Tidal Basin and Potomac River and is a spacious, open area of approximately 2 acres. It can be accessed by automobile, or on foot, and is along a major tourist route. The closest Metrorail stations are at Foggy Bottom or Smithsonian, both of which are far from the site.

### **Reasons for Elimination:**

The site is a long walk from the National Mall, and is not close to any Metrorail station. The Commission determined that the site lacked the public access desired for the National Eisenhower Memorial. Site #8 was eliminated from further consideration at the March 25, 2004 Eisenhower Memorial Commission meeting.



Site #8  
Inlet Bridge  
West Potomac Park, SW  
(not to scale)

