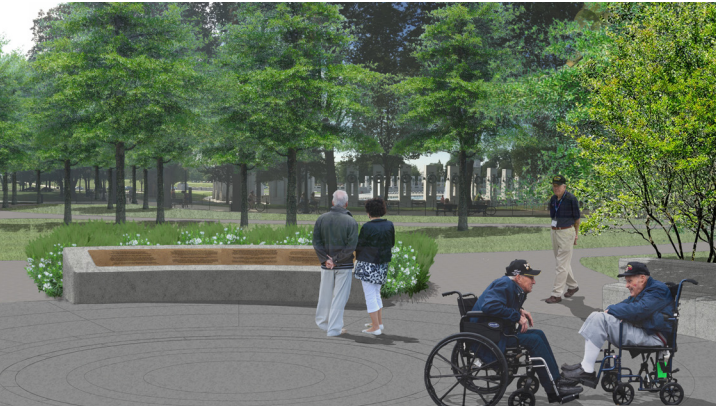


WORLD WAR II MEMORIAL:
FDR D-DAY PRAYER DESIGN CONCEPTS



Prepared for:

FRIENDS OF THE NATIONAL
WORLD WAR II MEMORIAL, INC

NOVEMBER 17, 2016

Contents



HISTORY AND OVERVIEW	04
PRESIDENT FRANKLIN D. ROOSEVELT’S D-DAY PRAYER	05
CIRCLE OF REMEMBRANCE: WWII MEMORIAL CONTEXT	06
CIRCLE OF REMEMBRANCE EXISTING CONDITIONS	07
CRITERIA FOR EVALUATING DESIGN ALTERNATIVES	08 - 09
D-DAY PRAYER PREFERRED CONCEPT LOCATIONS	10 - 11
D-DAY PRAYER DESIGN ALTERNATIVE I	12 - 13
D-DAY PRAYER DESIGN ALTERNATIVE II	14 - 15
WWII MEMORIAL MATERIAL PRECEDENTS	16 - 17
FDR D-DAY PLAQUE DESIGN	18
APPENDIX	19 - 21

History and Overview



On June 30, 2014, President Obama signed into law the World War II Memorial Prayer Act of 2013 (Public Law 113-123) directing the Secretary of the Interior to “install in the area of the World War II Memorial in the District of Columbia a suitable plaque or an inscription with the words that President Franklin D. Roosevelt prayed with the United States on D-Day, June 6, 1944.”

“1. Short title

This Act may be cited as the World War II Memorial Prayer Act of 2013 .

2. Placement of plaque or inscription at world war II memorial

The Secretary of the Interior—

(1) shall install in the area of the World War II Memorial in the District of Columbia a suitable plaque or an inscription with the words that President Franklin D. Roosevelt prayed with the United States on June 6, 1944, the morning of D-Day;

(2) shall design, procure, prepare, and install the plaque or inscription referred to in paragraph (1); and

(3) may not use Federal funds to prepare or install the plaque or inscription referred to in paragraph (1), but may accept and expend private contributions for this purpose.

3. Commemorative Works Act

Chapter 89 of title 40, United States Code (commonly known as the Commemorative Works Act), shall apply to the design and placement of the plaque within the area of the World War II Memorial.

Passed the Senate June 5, 2014.”

Because the legislation stipulates that no federal funds may be used to implement this directive, the National Park Service (NPS) and the Friends of the National World War II have entered into an agreement that gives Friends the lead role in designing, funding, and installing the addition. Friends will work hand-in-hand with NPS to seek the necessary federal approvals.

In February 2015, the Friends of the World War II Memorial and National Park Service engaged OvS to prepare a site analysis of the WWII Memorial site with the intent of evaluating several placement alternatives for the prayer.

A thorough site analysis of each site was conducted, assessing general site character, views to and from the site, existing circulation patterns, existing furnishings and materials, and existing vegetation. Based on this analysis, the Circle of Remembrance was selected as the preferred site for the D-Day Prayer.

Based on the conclusion of the site analysis, this document presents two alternatives for locating the Prayer within the context of the Circle of Remembrance. This report also provides a set of criteria for evaluating the alternatives. These criteria are based on the design goals for the D-Day Prayer and the Circle of Remembrance, their relationship to the WWII Memorial, and guidance provided by the National Park Service and Friends of the World War II Memorial.

Following the evaluation of the proposed design alternatives, a single concept will be selected for further design development and construction.

President Franklin D. Roosevelt’s D-Day Prayer



During World War II (1929 - 1945), the Battle of Normandy resulted in the Allied liberation of Western Europe from Nazi Germany’s control. The battle began on June, 6, 1944 which is known as D-Day. Approximately 160,000 Allied troops landed on 50 miles of beaches in Normandy in an attempt to liberate France. This invasion was one of the largest amphibious military assaults in history and what Winston Churchill called “the most difficult and complicated operation that has ever taken place.”

Franklin D. Roosevelt chose to commemorate the moment and address the nation with a prayer of his own composition. The White House distributed the text on the morning of June 6, 1944 to be published in newspapers, and FDR would ask American radio listeners to join him in prayer as it was broadcast to an estimated audience of 100 million.

“My Fellow Americans:

In this poignant hour, I ask you to join me in prayer:

Almighty God: Our sons, pride of our Nation, this day have set upon a mighty endeavor, a struggle to preserve our Republic, our religion, and our civilization, and to set free a suffering humanity.

Lead them straight and true; give strength to their arms, stoutness to their hearts, steadfastness in their faith.

They will need Thy blessings. Their road will be long and hard. For the enemy is strong. He may hurl back our forces. Success may not come with rushing speed, but we shall return again and again; and we know that by Thy grace, and by the righteousness of our cause, our sons will triumph.

They will be sore tried, by night and by day, without rest-until the victory is won. The darkness will be rent by noise and flame. Men’s souls will be shaken with the violences of war.

These are men lately drawn from the ways of peace. They fight not for the lust of conquest. They fight to end conquest. They fight to liberate. They fight to let justice arise, and tolerance and good will among all Thy people. They yearn but for the end of battle, for their return to the haven of home.

Some will never return. Embrace these, Father, and receive them, Thy heroic servants, into Thy kingdom.

And for us at home -- fathers, mothers, children, wives, sisters, and brothers of brave men overseas -- whose thoughts and prayers are ever with them--help us, Almighty God, to rededicate ourselves in renewed faith in Thee in this hour of great sacrifice.

Many people have urged that I call the Nation into a single day of special prayer. But because the road is long and the desire is great, I ask that our people devote themselves in a continuance of prayer. As we rise to each new day, and again when each day is spent, let words of prayer be on our lips, invoking Thy help to our efforts.

Give us strength, too -- strength in our daily tasks, to redouble the contributions we make in the physical and the material support of our armed forces.

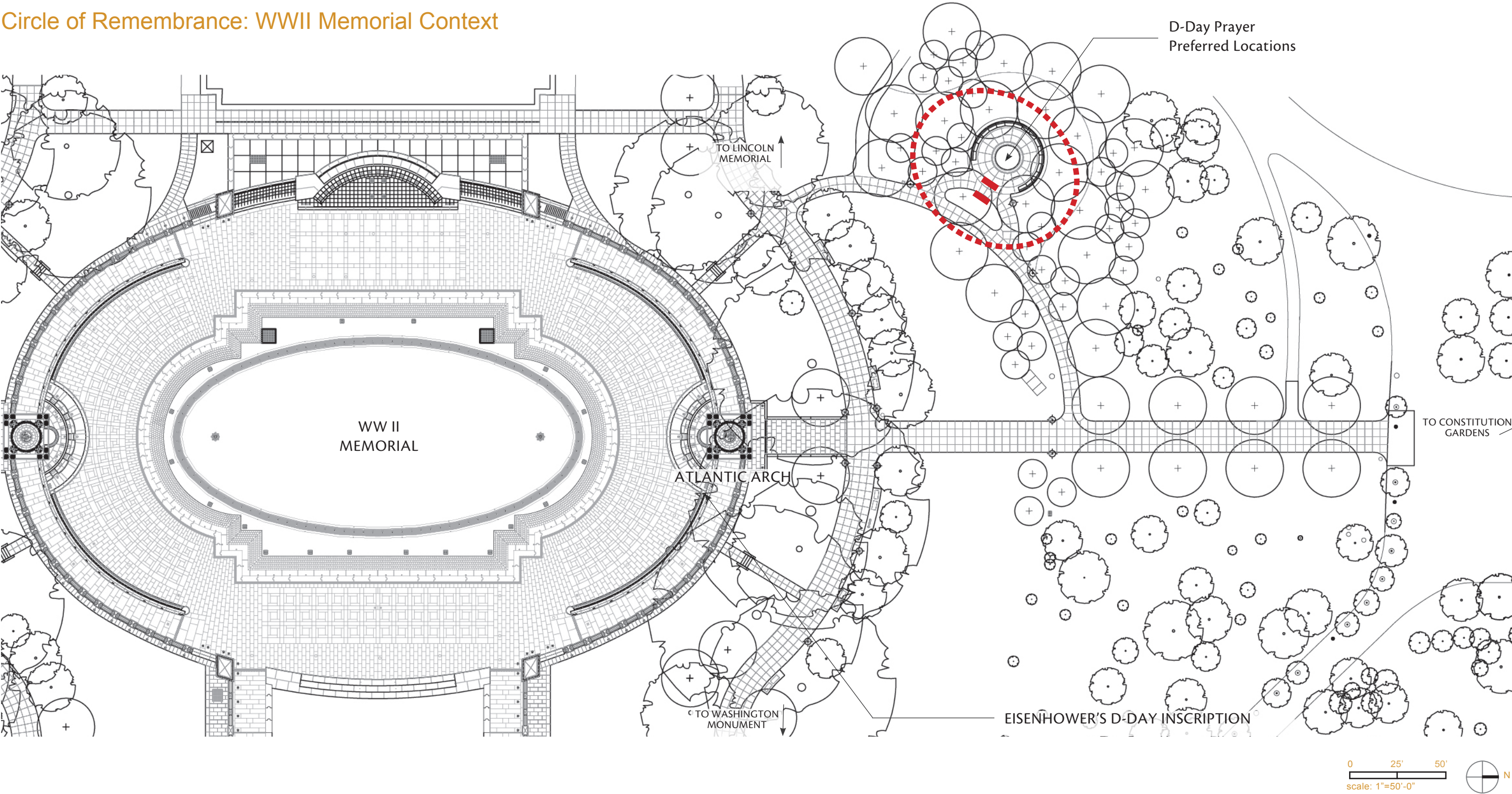
And let our hearts be stout, to wait out the long travail, to bear sorrows that may come, to impart our courage unto our sons wheresoever they may be.

And, O Lord, give us Faith. Give us Faith in Thee; Faith in our sons; Faith in each other; Faith in our united crusade. Let not the keenness of our spirit ever be dulled. Let not the impacts of temporary events, of temporal matters of but fleeting moment let not these deter us in our unconquerable purpose.

With Thy blessing, we shall prevail over the unholy forces of our enemy. Help us to conquer the apostles of greed and racial arrogancies. Lead us to the saving of our country, and with our sister Nations into a world unity that will spell a sure peace a peace invulnerable to the schemings of unworthy men. And a peace that will let all of men live in freedom, reaping the just rewards of their honest toil.

Thy will be done, Almighty God.

Circle of Remembrance: WWII Memorial Context



Criteria for Evaluating the Design Alternatives

Several criteria were developed to evaluate the design alternatives for the D-Day Prayer Memorial within the of Circle of Remembrance. The first four criteria listed below were carried forward from the Site Analysis because they are pertinent to locating the Prayer within the Circle of Remembrance site. The final four criteria were developed specifically to evaluate the aesthetics and visitor experience of the D-Day Prayer Memorial.

Criteria for siting the D-Day Prayer Memorial within the Circle of Remembrance

CONTEMPLATIVE CHARACTER

The D-Day Prayer shall be sited to allow contemplation and reflection. Concepts for the Prayer shall preserve the contemplative character and purpose of the Circle, while allowing for quiet reflection and solemnity called for by the Prayer itself.

VEGETATIVE SCREENING

The D-Day Prayer shall be sited with consideration for preservation of existing mature vegetation and selective inclusion of new planting to provide a sense of comfortable enclosure and filter viewsheds to the bustling primary Memorial precinct.

COMPATIBILITY WITH EXISTING CIRCULATION AND VISITATION PATTERNS

The siting of the D-Day Prayer shall limit disturbance to the existing circulation patterns and shall not require additional walkways. In addition, the D-Day Prayer shall be sited so that visitors can easily locate it.

EASE OF LONG-TERM MAINTENANCE

The D-Day Prayer shall be designed and sited with consideration for long-term maintenance. The NPS has requested that the D-Day Prayer be inscribed in bronze rather than stone for ease of maintenance. Also, the D-Day Prayer shall be sited in a location where it can be elevated (and not flat on the ground) for ease of maintenance.

Criteria for evaluating the design of the D-Day Prayer Memorial

VISUAL CONNECTION WITH THE WWII MEMORIAL

The D-Day Prayer shall be sited to allow visitors to have views of the WWII Memorial while reading the Prayer.

ADHERENCE WITH ORIGINAL WWII MEMORIAL DESIGN INTENT

The design of the D-Day Prayer presents an opportunity to more closely align the Circle of Remembrance with the WWII Memorial in material and character. The proposed concepts shall incorporate the granite and bronze used at the WWII Memorial.

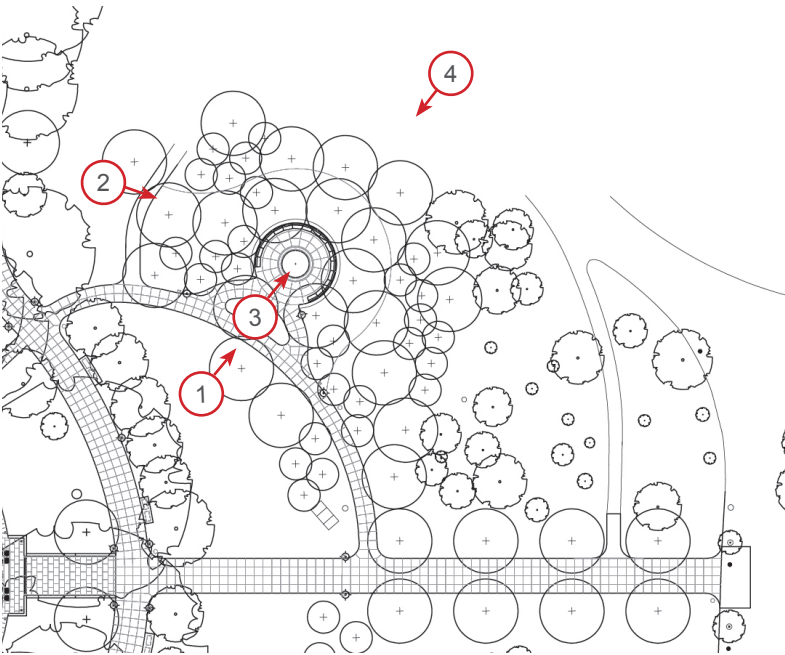
COMFORT AND LEGIBILITY

The D-Day Prayer shall be inscribed or engraved in a size and location sufficient for legibility of the text and with enough space for visitors to gather while visiting the Prayer.

ADHERENCE TO ORIGINAL INTENT / PRAYER FORMAT

The text of the D-Day Prayer shall be displayed in a manner that is consistent with the tone and language of FDR’s original delivery of the Prayer.

Circle of Remembrance: Existing Conditions



Key Map



1 View from the lawn in front of the Circle of Remembrance



2 View along the path to Constitution Gardens

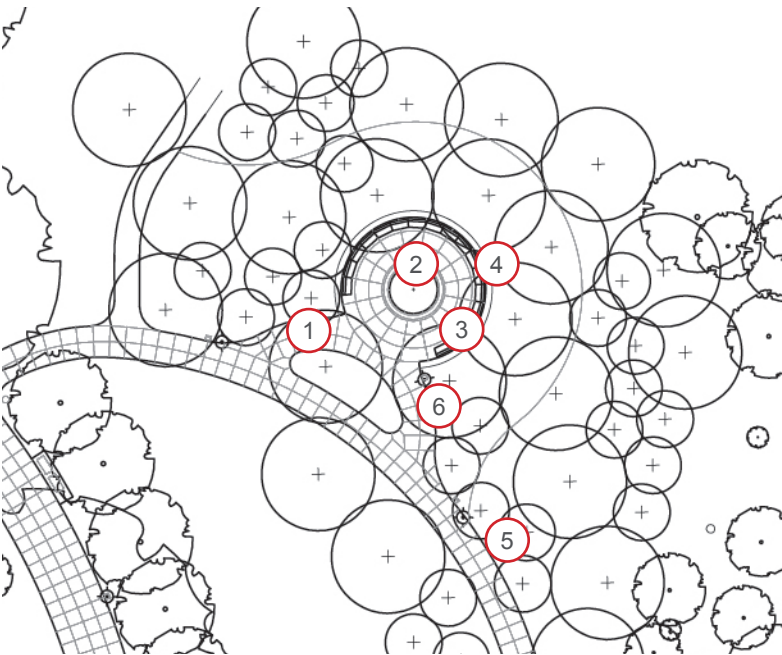


3 View into Circle, Constitution Gardens beyond



4 Looking towards the Circle and WWII Memorial from Constitution Gardens

Existing Site Furnishings and Materials



Key Map

- Paving is concrete with exposed aggregate.
- Flush planter curb is ‘Greene County’ granite.
- Wall is fieldstone.
- Curved wood benches have a cast iron frame.
- Trash receptacles and lighting are black powder-coated metal and Victorian in style.



1 Concrete Paving



2 Granite Planter Curb (‘Greene County’ granite)



3 Wood Bench with Cast Iron Frame and Arm Rest



4 Fieldstone Wall



5 Trash Receptacle



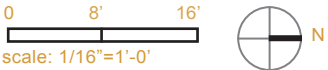
6 Light Pole

D-Day Prayer: Preferred Concept Locations

During the Site Analysis process, the Circle of Remembrance was selected as the best alternative. Two locations within this site have been studied for the siting of the D-Day Prayer.

In each alternative, the Circle of Remembrance is re-envisioned with the same materials used for the WWII Memorial, creating a more cohesive aesthetic. Therefore, each option calls for the replacement of the existing fieldstone wall and wooden benches with granite walls and benches consistent with the WWII Memorial.

- 1 **Alternative I:** The D-Day Prayer is sited along the internal edge of the planter at the entrance to the Circle of Remembrance.
- 2 **Alternative II:** This alternative ‘completes’ the Circle, placing the prayer on a granite wall the same height as the other walls.



D-Day Prayer: Preferred Concept Locations: Site Photos



1 Proposed location - Alternative I



2 Proposed location - Alternative II

D-Day Prayer Design Alternative I

Concept Description

The D-Day Prayer is sited along the internal edge of the planter at the entrance to the Circle of Remembrance. The Prayer is inscribed onto a bronze plaque which is embedded into a granite tablet. The tablet is approximately 2' tall, 4.5' wide and 8' long.

Adherence to Design Criteria

CONTEMPLATIVE CHARACTER

- The Prayer is placed on the secondary path outside the Circle, allowing visitors to read the Prayer outside the contemplative space of the Circle.

VEGETATIVE SCREENING

- A sense of enclosure is provided by small, multi-stem flowering trees that surround the circular wall, while low shrubs at the entry provide visual separation of the Circle from the path.

COMPATIBILITY WITH EXISTING CIRCULATION AND VISITATION PATTERNS

- The D-Day Prayer is placed along the edge of the existing plant bed, with no changes to the path or Circle layout.

EASE OF LONG-TERM MAINTENANCE

- The Prayer is proposed to be engraved on a bronze plaque for easy long-term maintenance.

VISUAL CONNECTION WITH THE WWII MEMORIAL

- Visitors to the D-Day Prayer would have views of the WWII Memorial in the background.

ADHERENCE WITH ORIGINAL WWII MEMORIAL DESIGN INTENT

- The benches, paving and walls of this alternative are consistent with the materials and aesthetics of the WWII Memorial.

COMFORT AND LEGIBILITY

- Visitors will be able to comfortably read the Prayer from a standing position.

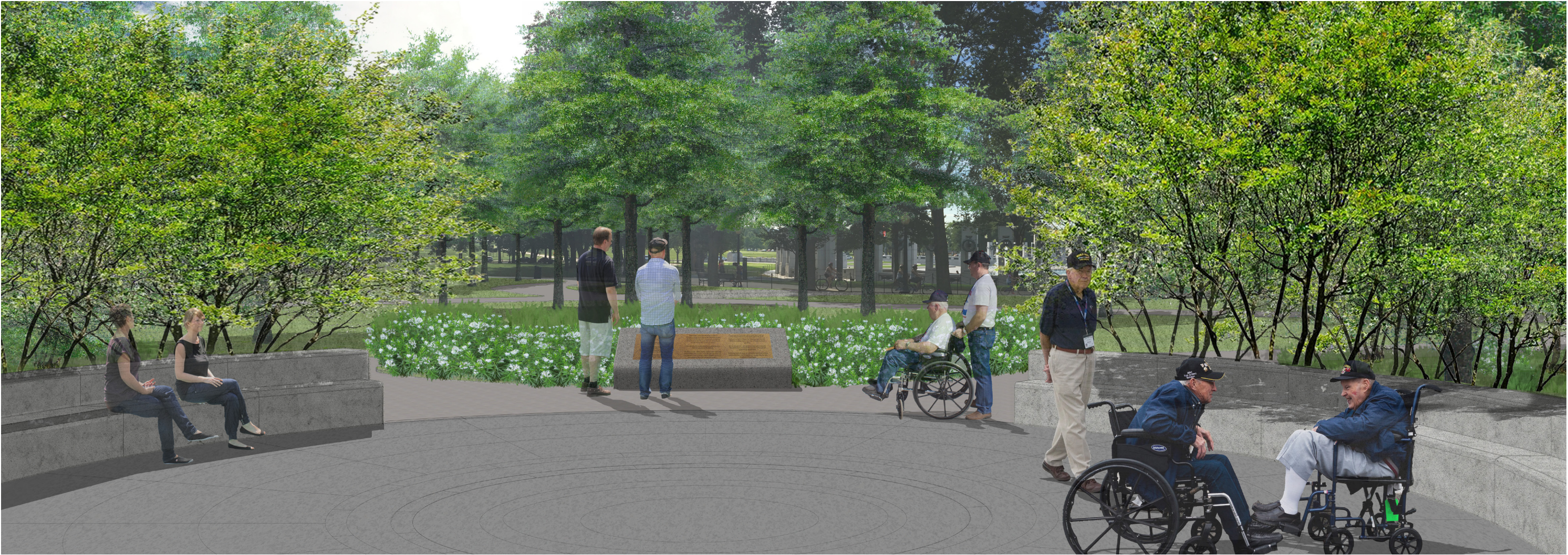
LEGIBILITY AND PRAYER FORMAT

- The bronze engraving will ensure long term legibility while the font will be sized to meet accessibility standards.



D-Day Prayer Design Alternative I

Design Alternative I was selected as a preferred concept because the placement of the Prayer provides a strong visual connection with the WWII Memorial and the subtle design is harmonious with the existing pathways and planting.



D-Day Prayer Design Alternative II

Concept Description

This alternative ‘completes’ the Circle, placing the prayer on a curved granite wall within the bounds of the Circle’s circumference. Similarly to Alternative I, The Prayer is inscribed onto a bronze plaque that is placed on top of the wall. The wall is approximately 2.5’ tall, 3.5’ wide and 14’ long.

Adherence to Design Criteria

CONTEMPLATIVE CHARACTER

- The Prayer is placed within the Circle, so the contemplative space of the Circle and the Prayer Memorial are shared.

VEGETATIVE SCREENING

- A sense of enclosure is provided by small, multi-stem flowering trees that surround the circular wall, while low shrubs at the entry provide visual separation of the Circle from the path.

COMPATIBILITY WITH EXISTING CIRCULATION AND VISITATION PATTERNS

- The layout of the existing pathways would be modified to allow entry into the Circle on either side of the proposed Prayer .

EASE OF LONG-TERM MAINTENANCE

- The Prayer is proposed to be engraved on a bronze plaque for easy long-term maintenance.

VISUAL CONNECTION WITH THE WWII MEMORIAL

- Visitors to the D-Day Prayer would have views of the WWII Memorial in the background.

ADHERENCE WITH ORIGINAL WWII MEMORIAL DESIGN INTENT

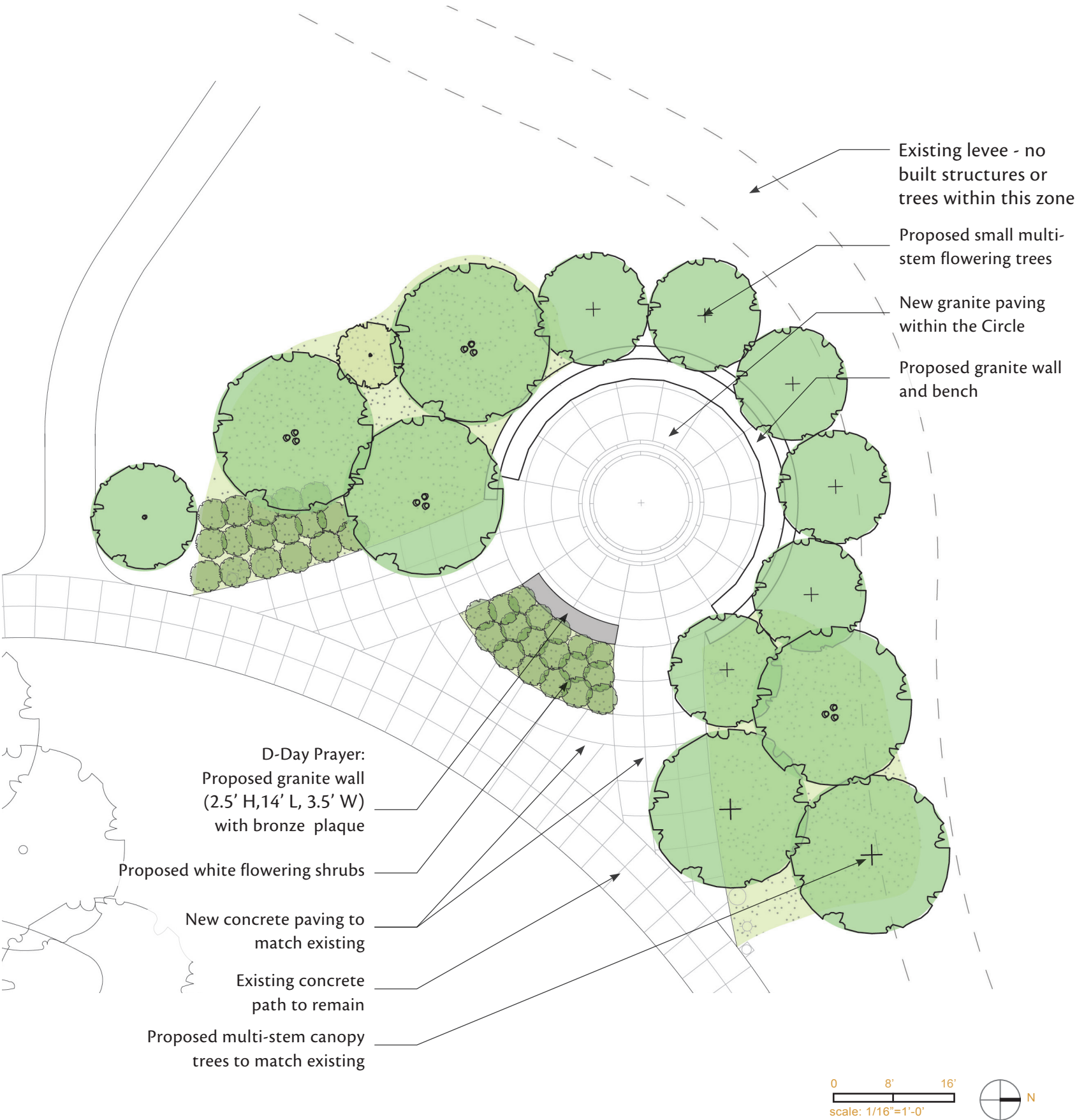
- The benches, paving and walls of this alternative are consistent with the materials and aesthetics of the WWII Memorial.

COMFORT AND LEGIBILITY

- Visitors will be able to comfortably read the Prayer from a standing position.

LEGIBILITY AND PRAYER FORMAT

- The bronze engraving will ensure long term legibility and the font will be sized to meet accessibility standards.



D-Day Prayer Design Alternative II

Design Alternative II was selected as a preferred concept because it emphasizes the ‘circular’ form of the Circle of Remembrance and creates a strong visual connection with the WWII Memorial. This alternative would provide additional enclosure for the Circle, while creating a defined threshold.



WW II Memorial Material Precedents

Materiality and Design Intent

The proposed concepts for the FDR D-Day Prayer are designed to be consistent materially and aesthetically with the WWII Memorial.

Benches

The benches at the WWII Memorial are comprised of light grey ‘Kershaw’ granite with gently rounded edges. The walls and benches at the Circle of Remembrance and the FDR D-Day Prayer would reflect this design language.

The material of the new walls and benches could be the same ‘Kershaw’ granite or a medium grey granite, such as the ‘Moss Green’ granite used as a paving accent at the Memorial. This medium grey granite would provide a transition from the Memorial grounds to the ‘park’ landscape of Constitution Gardens.



Circle of Remembrance from Constitution Gardens pathway



‘Kershaw’ granite wall and benches at WWII Memorial



Detail of chamfered edge

WW II Memorial Material Precedents

Paving and Metalwork

The updated design for the Circle of Remembrance includes new granite paving within the ‘circle’ itself. The paving design will also take cues from the WWII Memorial in terms of material and pattern.

The concepts for the D-Day Prayer Memorial propose an inscription on a bronze plaque to provide legibility for visitors and to allow for long-term maintenance by the National Park Service. The plaque will be embedded or similarly attached to a granite tablet or wall, depending on the concept selected. The finish or patina of the bronze plaque will be consistent with elements present at the WWII Memorial.

Materials Key

- ① ‘Kershaw’ granite (vertical elements)
- ② ‘Greene County’ granite (primary paving material)
- ③ ‘Moss Green’ granite (frame paving accent)
- ④ ‘Rio Verde’ granite (center medallian paving accent)



Paving pattern at the Rainbow Pool edge, WWII Memorial



Paving pattern detail showing four types of stone used at WWII Memorial



Various bronze details from the WWII Memorial

FDR D-Day Plaque Design

Materiality and Design Intent

The design of the plaque for both Alternatives is consistent with the material and language of the WWII Memorial. The proposed material is bronze and the font is the all-capitalized ‘Roman Calaudian Variant’, which was specifically designed for the WWII Memorial. While the design of the plaque itself is still in development, the current proposal calls for a simple border surrounding the Prayer. Additional symbolic elements related to D-Day and its participants may be included as additional research and design move forward.

Format

The plaques proposed for both Alternative I and II are identical in regards to material and font. However, they differ in their format: Alternative I is comprised of three taller panels that work with the form and scale of the tablet. Alternative II includes four panels that are shorter but more elongated to relate to the form of the stone wall supporting the plaque.

<p>FRANKLIN D. ROOSEVELT'S D-DAY PRAYER</p> <p>MY FELLOW AMERICANS:</p> <p>IN THIS POIGNANT HOUR, I ASK YOU TO JOIN ME IN PRAYER:</p> <p>ALMIGHTY GOD: OUR SONS, PRIDE OF OUR NATION, THIS DAY HAVE SET UPON A MIGHTY ENDEAVOR, A STRUGGLE TO PRESERVE OUR REPUBLIC, OUR RELIGION, AND OUR CIVILIZATION, AND TO SET FREE A SUFFERING HUMANITY.</p> <p>LEAD THEM STRAIGHT AND TRUE; GIVE STRENGTH TO THEIR ARMS, STOUTNESS TO THEIR HEARTS, STEADFASTNESS IN THEIR FAITH.</p> <p>THEY WILL NEED THY BLESSINGS, THEIR ROAD WILL BE LONG AND HARD, FOR THE ENEMY IS STRONG, HE MAY HURL BACK OUR FORCES, SUCCESS MAY NOT COME WITH RUSHING SPEED, BUT WE SHALL RETURN AGAIN AND AGAIN; AND WE KNOW THAT BY THY GRACE, AND BY THE RIGHTEOUSNESS OF OUR CAUSE, OUR SONS WILL TRIUMPH.</p> <p>THEY WILL BE SORE TRIED, BY NIGHT AND BY DAY, WITHOUT REST-UNTIL THE VICTORY IS WON, THE DARKNESS WILL BE RENT BY NOISE AND FLAME. MEN'S SOULS WILL BE SHAKEN WITH THE VIOLENCES OF WAR.</p> <p>THESE ARE MEN LATELY DRAWN FROM THE WAYS OF PEACE, THEY FIGHT NOT FOR THE LUST OF CONQUEST, THEY FIGHT TO END CONQUEST, THEY FIGHT TO LIBERATE, THEY FIGHT TO LET JUSTICE ARISE, AND TOLERANCE AND GOOD WILL AMONG ALL THY PEOPLE, THEY YEARN BUT FOR THE END OF BATTLE, FOR THEIR RETURN TO THE HAVEN OF HOME.</p>	<p>SOME WILL NEVER RETURN. EMBRACE THESE, FATHER, AND RECEIVE THEM, THY HEROIC SERVANTS, INTO THY KINGDOM.</p> <p>AND FOR US AT HOME -- FATHERS, MOTHERS, CHILDREN, WIVES, SISTERS, AND BROTHERS OF BRAVE MEN OVERSEAS -- WHOSE THOUGHTS AND PRAYERS ARE EVER WITH THEM-- HELP US, ALMIGHTY GOD, TO REDEDICATE OURSELVES IN RENEWED FAITH IN THEE IN THIS HOUR OF GREAT SACRIFICE.</p> <p>MANY PEOPLE HAVE URGED THAT I CALL THE NATION INTO A SINGLE DAY OF SPECIAL PRAYER. BUT BECAUSE THE ROAD IS LONG AND THE DESIRE IS GREAT, I ASK THAT OUR PEOPLE DEVOTE THEMSELVES IN A CONTINUANCE OF PRAYER, AS WE RISE TO EACH NEW DAY, AND AGAIN WHEN EACH DAY IS SPENT, LET WORDS OF PRAYER BE ON OUR LIPS, INVOKING THY HELP TO OUR EFFORTS.</p> <p>GIVE US STRENGTH, TOO -- STRENGTH IN OUR DAILY TASKS, TO REDOUBLE THE CONTRIBUTIONS WE MAKE IN THE PHYSICAL AND THE MATERIAL SUPPORT OF OUR ARMED FORCES.</p> <p>AND LET OUR HEARTS BE STOUT, TO WAIT OUT THE LONG TRAVAIL, TO BEAR SORROWS THAT MAY COME, TO IMPART OUR COURAGE UNTO OUR SONS WHERESOEVER THEY MAY BE.</p>	<p>AND, O LORD, GIVE US FAITH. GIVE US FAITH IN THEE; FAITH IN OUR SONS; FAITH IN EACH OTHER; FAITH IN OUR UNITED CRUSADE. LET NOT THE KEENNESS OF OUR SPIRIT EVER BE DULLED, LET NOT THE IMPACTS OF TEMPORARY EVENTS, OF TEMPORAL MATTERS OF BUT FLEETING MOMENT LET NOT THESE DETER US IN OUR UNCONQUERABLE PURPOSE.</p> <p>WITH THY BLESSING, WE SHALL PREVAIL OVER THE UNHOLY FORCES OF OUR ENEMY. HELP US TO CONQUER THE APOSTLES OF GREED AND RACIAL ARROGANCIES. LEAD US TO THE SAVING OF OUR COUNTRY, AND WITH OUR SISTER NATIONS INTO A WORLD UNITY THAT WILL SPELL A SURE PEACE A PEACE INVULNERABLE TO THE SCHEMINGS OF UNWORTHY MEN. AND A PEACE THAT WILL LET ALL OF MEN LIVE IN FREEDOM, REAPING THE JUST REWARDS OF THEIR HONEST TOIL.</p> <p>THY WILL BE DONE, ALMIGHTY GOD.</p> <p>AMEN.</p> <p>- PRESIDENT FRANKLIN D. ROOSEVELT JUNE 6, 1944</p>
---	---	---

+/- 5’

Alternative I: Three Panel plaque

<p>FRANKLIN D. ROOSEVELT'S D-DAY PRAYER</p> <p>MY FELLOW AMERICANS:</p> <p>IN THIS POIGNANT HOUR, I ASK YOU TO JOIN ME IN PRAYER:</p> <p>ALMIGHTY GOD: OUR SONS, PRIDE OF OUR NATION, THIS DAY HAVE SET UPON A MIGHTY ENDEAVOR, A STRUGGLE TO PRESERVE OUR REPUBLIC, OUR RELIGION, AND OUR CIVILIZATION, AND TO SET FREE A SUFFERING HUMANITY.</p> <p>LEAD THEM STRAIGHT AND TRUE; GIVE STRENGTH TO THEIR ARMS, STOUTNESS TO THEIR HEARTS, STEADFASTNESS IN THEIR FAITH.</p> <p>THEY WILL NEED THY BLESSINGS, THEIR ROAD WILL BE LONG AND HARD, FOR THE ENEMY IS STRONG, HE MAY HURL BACK OUR FORCES, SUCCESS MAY NOT COME WITH RUSHING SPEED, BUT WE SHALL RETURN AGAIN AND AGAIN; AND WE KNOW THAT BY THY GRACE, AND BY THE RIGHTEOUSNESS OF OUR CAUSE, OUR SONS WILL TRIUMPH.</p> <p>THEY WILL BE SORE TRIED, BY NIGHT AND BY DAY, WITHOUT REST-UNTIL THE VICTORY IS WON, THE DARKNESS WILL BE RENT BY NOISE AND FLAME. MEN'S SOULS WILL BE SHAKEN WITH THE VIOLENCES OF WAR.</p>	<p>THESE ARE MEN LATELY DRAWN FROM THE WAYS OF PEACE, THEY FIGHT NOT FOR THE LUST OF CONQUEST, THEY FIGHT TO END CONQUEST, THEY FIGHT TO LIBERATE, THEY FIGHT TO LET JUSTICE ARISE, AND TOLERANCE AND GOOD WILL AMONG ALL THY PEOPLE, THEY YEARN BUT FOR THE END OF BATTLE, FOR THEIR RETURN TO THE HAVEN OF HOME.</p> <p>SOME WILL NEVER RETURN. EMBRACE THESE, FATHER, AND RECEIVE THEM, THY HEROIC SERVANTS, INTO THY KINGDOM.</p> <p>AND FOR US AT HOME -- FATHERS, MOTHERS, CHILDREN, WIVES, SISTERS, AND BROTHERS OF BRAVE MEN OVERSEAS -- WHOSE THOUGHTS AND PRAYERS ARE EVER WITH THEM-- HELP US, ALMIGHTY GOD, TO REDEDICATE OURSELVES IN RENEWED FAITH IN THEE IN THIS HOUR OF GREAT SACRIFICE.</p>	<p>MANY PEOPLE HAVE URGED THAT I CALL THE NATION INTO A SINGLE DAY OF SPECIAL PRAYER. BUT BECAUSE THE ROAD IS LONG AND THE DESIRE IS GREAT, I ASK THAT OUR PEOPLE DEVOTE THEMSELVES IN A CONTINUANCE OF PRAYER, AS WE RISE TO EACH NEW DAY, AND AGAIN WHEN EACH DAY IS SPENT, LET WORDS OF PRAYER BE ON OUR LIPS, INVOKING THY HELP TO OUR EFFORTS.</p> <p>GIVE US STRENGTH, TOO -- STRENGTH IN OUR DAILY TASKS, TO REDOUBLE THE CONTRIBUTIONS WE MAKE IN THE PHYSICAL AND THE MATERIAL SUPPORT OF OUR ARMED FORCES.</p> <p>AND LET OUR HEARTS BE STOUT, TO WAIT OUT THE LONG TRAVAIL, TO BEAR SORROWS THAT MAY COME, TO IMPART OUR COURAGE UNTO OUR SONS WHERESOEVER THEY MAY BE.</p>	<p>AND, O LORD, GIVE US FAITH. GIVE US FAITH IN THEE; FAITH IN OUR SONS; FAITH IN EACH OTHER; FAITH IN OUR UNITED CRUSADE. LET NOT THE KEENNESS OF OUR SPIRIT EVER BE DULLED, LET NOT THE IMPACTS OF TEMPORARY EVENTS, OF TEMPORAL MATTERS OF BUT FLEETING MOMENT LET NOT THESE DETER US IN OUR UNCONQUERABLE PURPOSE.</p> <p>WITH THY BLESSING, WE SHALL PREVAIL OVER THE UNHOLY FORCES OF OUR ENEMY. HELP US TO CONQUER THE APOSTLES OF GREED AND RACIAL ARROGANCIES. LEAD US TO THE SAVING OF OUR COUNTRY, AND WITH OUR SISTER NATIONS INTO A WORLD UNITY THAT WILL SPELL A SURE PEACE A PEACE INVULNERABLE TO THE SCHEMINGS OF UNWORTHY MEN. AND A PEACE THAT WILL LET ALL OF MEN LIVE IN FREEDOM, REAPING THE JUST REWARDS OF THEIR HONEST TOIL.</p> <p>THY WILL BE DONE, ALMIGHTY GOD.</p> <p>AMEN.</p> <p>- PRESIDENT FRANKLIN D. ROOSEVELT JUNE 6, 1944</p>
--	---	--	---

+/- 9’

Alternative II: Four Panel plaque

Appendix



LETTER FROM PREVIOUS CFA HEARING	20
OTHER SITES CONSIDERED DURING SITE ANALYSIS PHASE	21

Commission of Fine Arts
Letter Re: FDR Prayer Siting

CFA 15/OCT/15-1

LOCATION: West Potomac Park, 17th Street and Independence Avenue, SW Washington, DC

OWNER: National Park Service (NPS)

PROPERTY: World War II Memorial

DESCRIPTION: Install plaque with President Franklin D. Roosevelt's D-Day prayer

REVIEW TYPE: Site Selection Letter

22 October 2015
Dear Mr. Vogel:

In its meeting of 15 October, the Commission of Fine Arts reviewed a site selection study for the location of a new plaque at the World War II Memorial to be inscribed with the prayer delivered by President Franklin D. Roosevelt by radio on D-Day. The Commission approved siting the plaque at the memorial's Circle of Remembrance, consistent with the preference of the National Park Service.

In their general support for this location, the Commission members also observed that the addition of a large tablet bearing the text of a public address may be incompatible with the intended purpose of private contemplation at the Circle of Remembrance. They commented on the possible difficulty of finding a successful location for a large plaque associated with the Circle; it may become evident through the design process that another site within the memorial precinct is more appropriate.

As always, the staff is available to assist you with the development of the design.

Sincerely,

/s/Thomas E. Luebke, FAIA
Secretary

Robert Vogel, Regional Director
National Park Service, National Capital Region
1100 Ohio Drive, SW
Washington, DC 20242

cc: Sheila Brady, Oehme, van Sweden & Associates
Holly Rotondi, Friends of the National World War II Memorial

Other Sites Considered During Initial Site Analysis

