

National Park Service
U.S. Department of the Interior

Yosemite National Park



Archeological Survey in Yosemite's Wilderness: Impacts and Site Preservation

Yosemite Wilderness Stewardship Plan Science Day
2 November 2016

David L Curtis
Branch of Anthropology
Division of Resources Management & Science

EXPERIENCE YOUR AMERICA

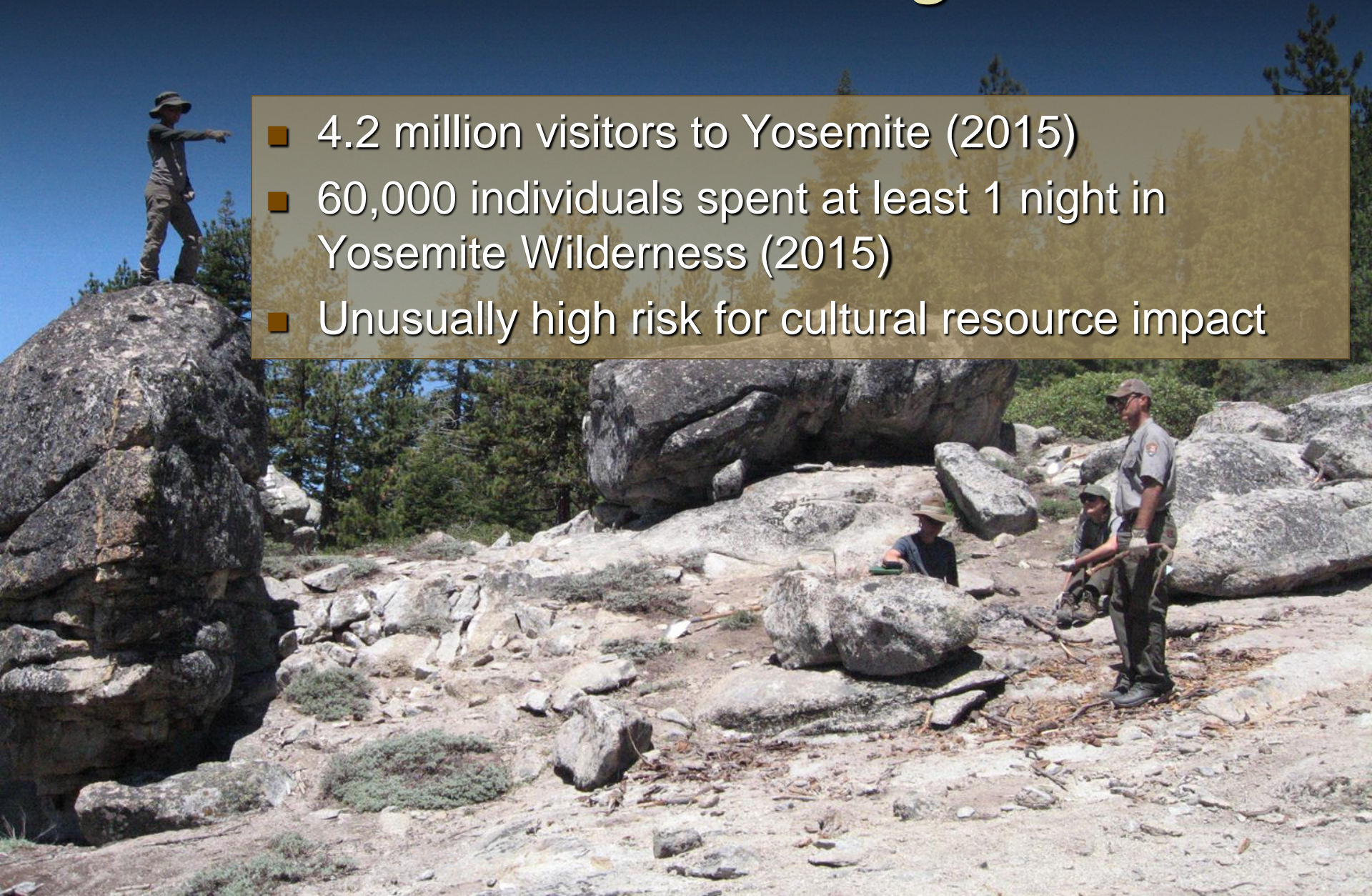
Presentation Overview

- Wilderness Restoration Program background
- How it protects archeological resources
- Program results



Wilderness Restoration Program

- 4.2 million visitors to Yosemite (2015)
- 60,000 individuals spent at least 1 night in Yosemite Wilderness (2015)
- Unusually high risk for cultural resource impact



Wilderness Restoration Program

- Long-term (began in 1987)
- Mitigates human-induced change in Wilderness
- Involves ground disturbance (digging, soil decompaction, etc.)

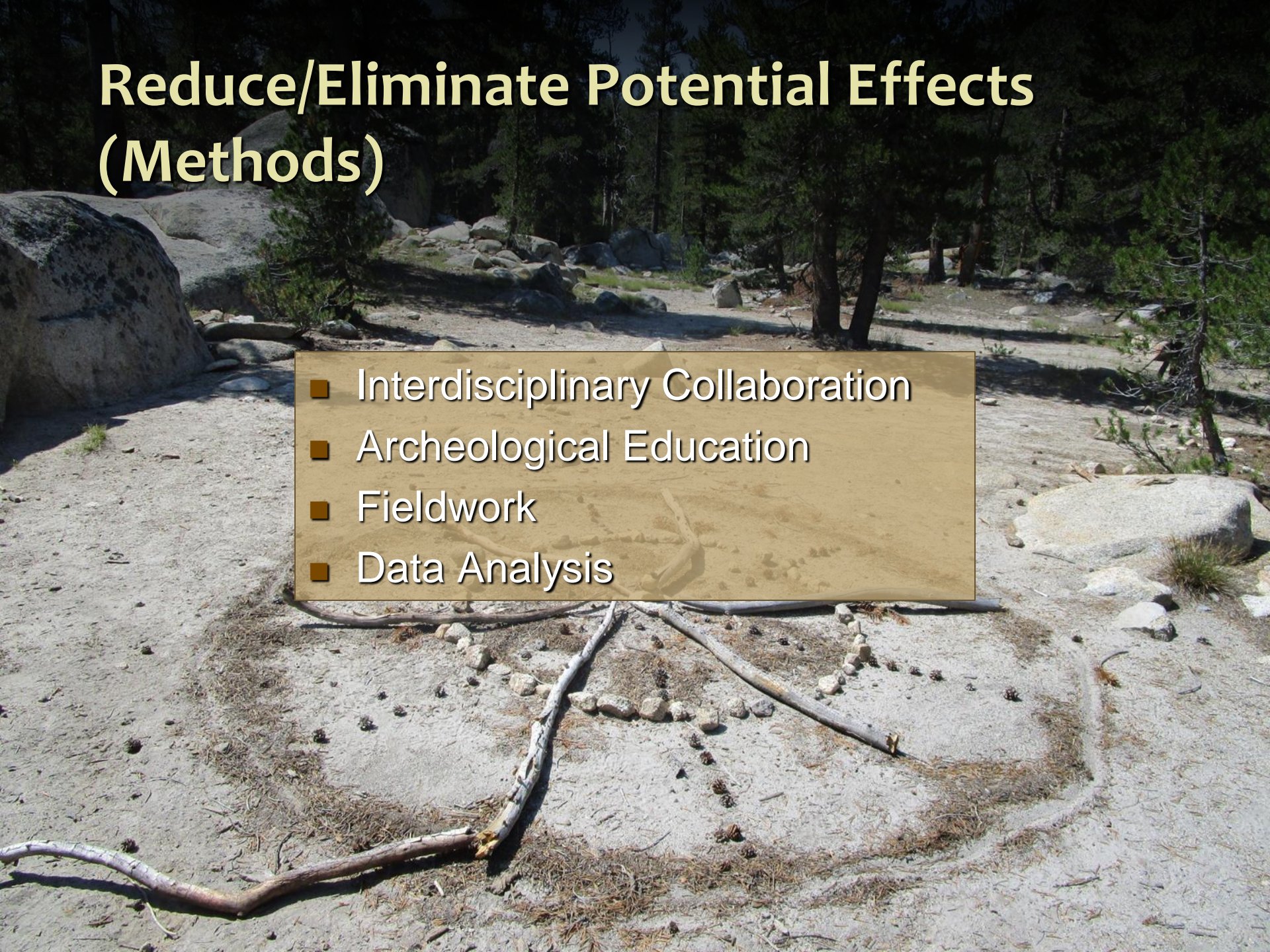


Archeological Compliance

- NHPA Section 106 and 110 compliance
- Longest running collaborative program
- Most productive archeological program

Reduce/Eliminate Potential Effects (Methods)

- Interdisciplinary Collaboration
- Archeological Education
- Fieldwork
- Data Analysis



Interdisciplinary Collaboration

- 
- A group of approximately 12 people, mostly in light-colored shirts and dark pants, are sitting in a circle on the forest floor. They are surrounded by large trees and sunlight filtering through the canopy. A semi-transparent box is overlaid on the center of the image, containing a list of three items: Planning, Scheduling, and Data Sharing, each preceded by a small brown square icon.
- Planning
 - Scheduling
 - Data Sharing

Archeological Education



Archeological Fieldwork

- Pedestrian Survey
- Site Inventory
- Condition Assessments



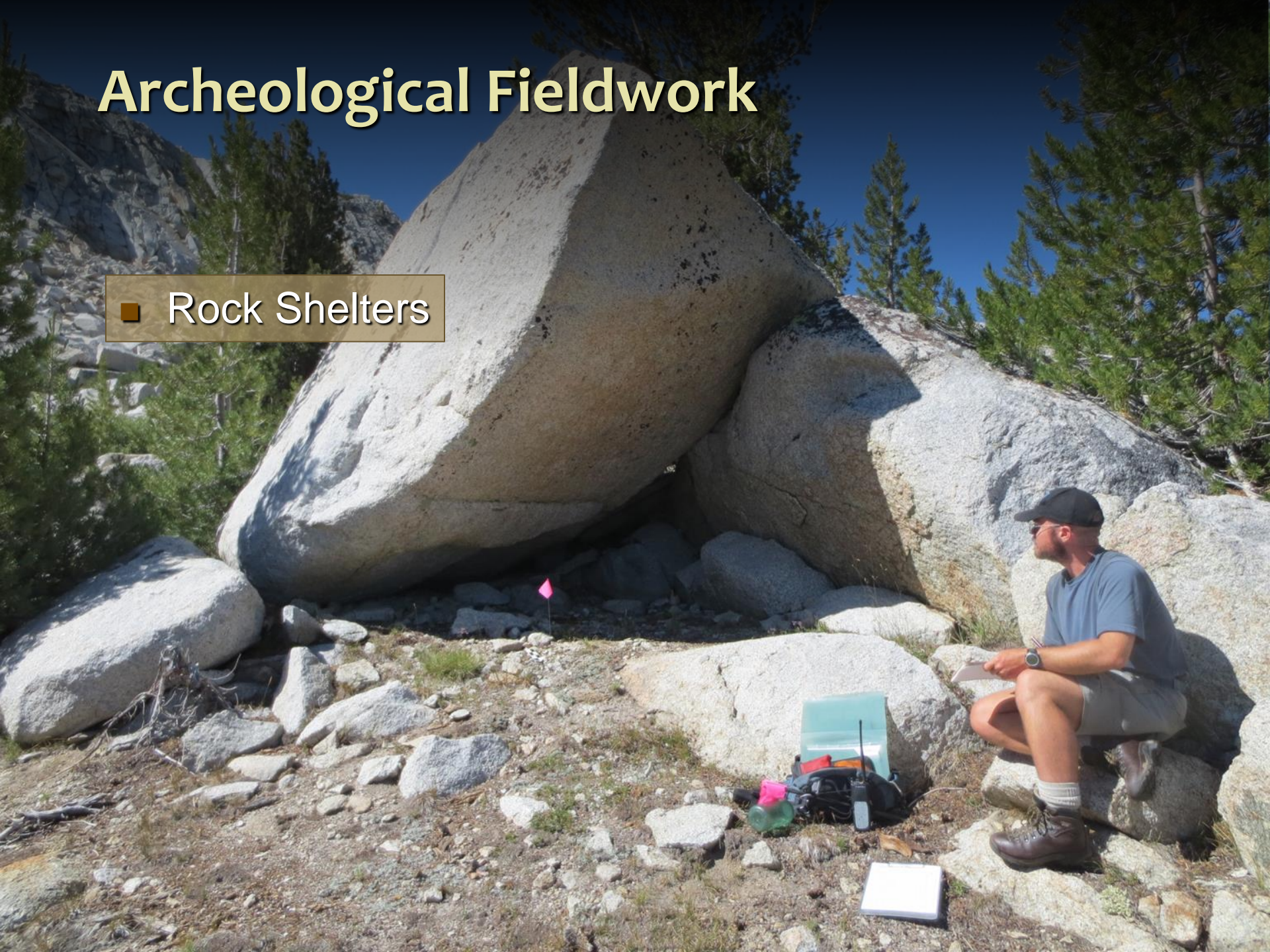
Archeological Fieldwork

■ Bedrock Mortars



Archeological Fieldwork

■ Rock Shelters



Archeological Fieldwork

■ Rock Circles



Archeological Fieldwork

- Obsidian Material



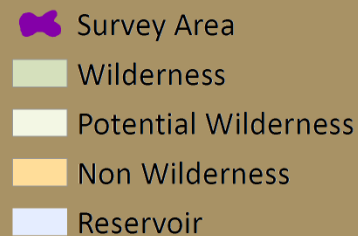
Archeological Fieldwork

- Condition Assessments



Program Results

106,600 acres surveyed



Program Results

106,600 acres surveyed

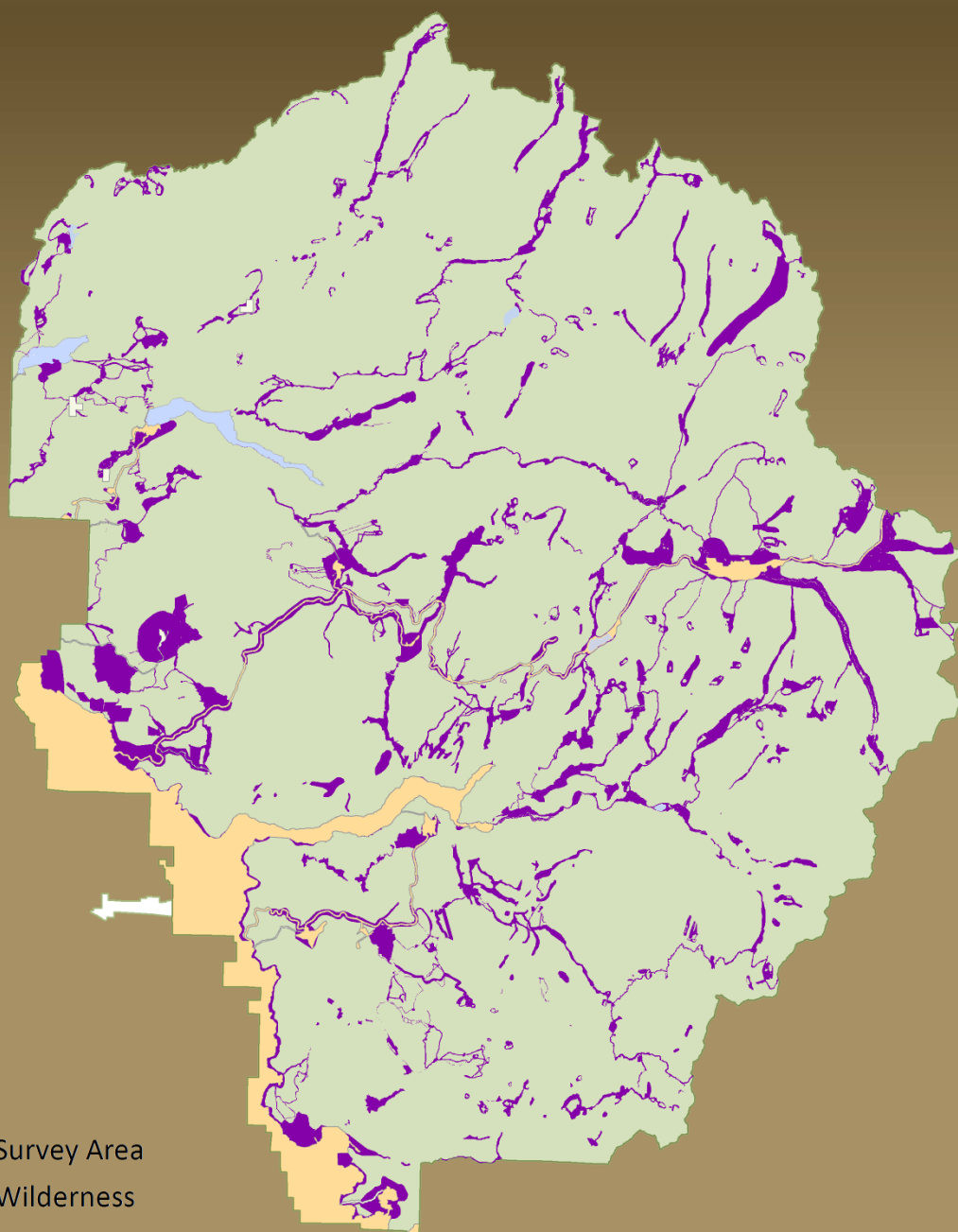
- 71,500 in Wilderness
- 22,000 as part of WRP (31%)



Predictive Model

	Area (m ²)	Survey (m ²)	Survey (%)
Entire Wilderness	704,556	71,493	10
Low probability	246,073	44,296	18
Medium probability	153,846	33,322	22
High probability	76,262	20,000	26

Based on the
Yosemite Archeological Site Predictive Model



Program Results

>2,100 sites documented

- 1,400 in Wilderness

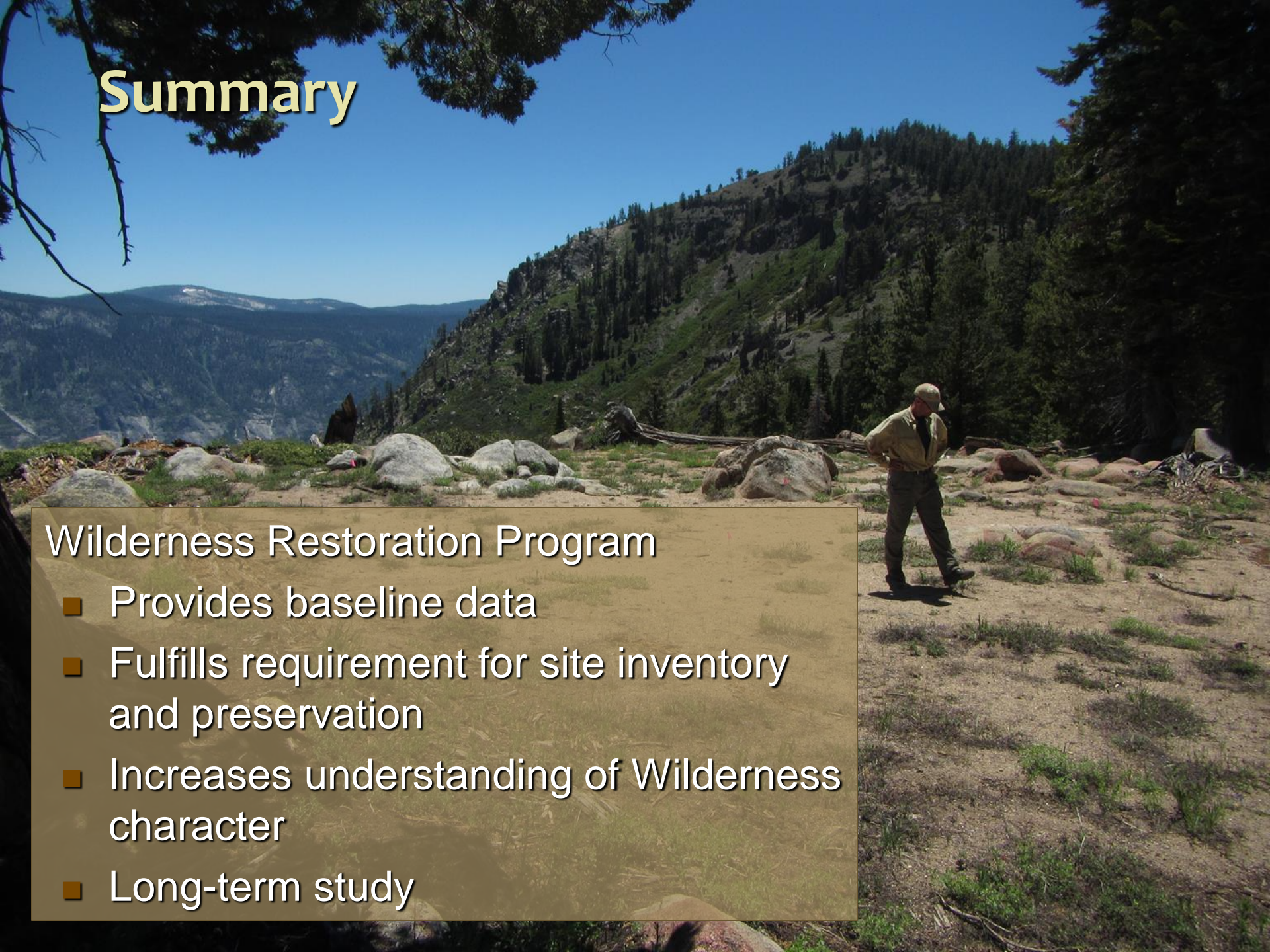
- 710 as part of WRP
(51%)



Summary

Wilderness Restoration Program

- Provides baseline data
- Fulfills requirement for site inventory and preservation
- Increases understanding of Wilderness character
- Long-term study



Thank You



Key players:
Vicky Hartman
April Johnson
Sonny Montague
Gregory R Burns

Funding provided by:
Yosemite Conservancy
San Francisco Public Utilities Commission