

Appendix A – Public Involvement

Glen Canyon National Recreation Area

National Park Service
U.S. Department of the Interior



Project Scoping

February 2004

Glen Canyon National Recreation Area Uplake Development Concept Plan / Environmental Assessment

In December 2003, the National Park Service initiated work on a Development Concept Plan (DCP) and Environmental Assessment (EA) for Bullfrog, Halls Crossing, and Hite marina areas. The DCPs for these areas were approved almost 20 years ago and an update is needed due to the changing lake conditions and the age of various lake facilities. This DCP will address lake access issues during fluctuating lake levels and evaluate visitor services, infrastructure, and facility needs. The new DCP is intended to guide future development for the next 15+ years. The EA will evaluate potential impacts to the environment from the DCP alternatives in accordance with the National Environmental Policy Act and the National Historic Preservation Act.

Background

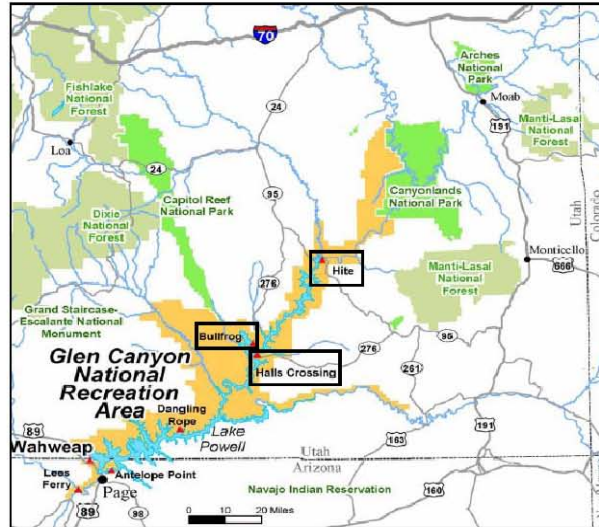
Bullfrog, Halls Crossing, and Hite developed areas lie on the northern end of Lake Powell in Glen Canyon National Recreation Area (NRA). Bullfrog lies in Kane and Garfield Counties, Utah, while Halls Crossing and Hite lie in San Juan County, Utah. Bullfrog is the largest marina on the northern portion of Lake Powell and Hite is the northernmost marina on the lake. The Hite marina is unique in that it services both lake and river boaters. For purposes of the DCP/EA, the Hite developed area consists of Hite, Farley Canyon, White Canyon, and Blue Notch Canyon.

Facilities and services found at all three areas at traditional lake levels include ranger stations, wet and dry boat storage, employee housing, boat and car fuel stations, post offices, boat repair facilities, visitor centers, boat rentals, launch ramps, campgrounds, public rental units (housekeeping units), sanitary waste pump-out and disposal stations, and emergency medical response.

Additional facilities at Bullfrog include a hotel, food service, a snack bar facility, grocery store, firehouse, and ferry service to Halls Crossing. Primitive, developed, and shoreline camping are available at Bullfrog.

Additional facilities available at Halls Crossing include a floating store, snack bar, and ferry service to Bullfrog. Only developed camping is available at Halls Crossing.

Primitive and shoreline camping are available at Hite.



Public Meetings

You are invited to attend one of the public meetings to be held on the Glen Canyon NRA Uplake DCP/EA.

The meetings will begin with a short presentation that will be repeated each hour, if appropriate. The public is then invited to view display stations highlighting various aspects of the project and study area. There will be a time of informal interaction with exhibits and opportunities to make written and verbal comments.

February 27, 2004

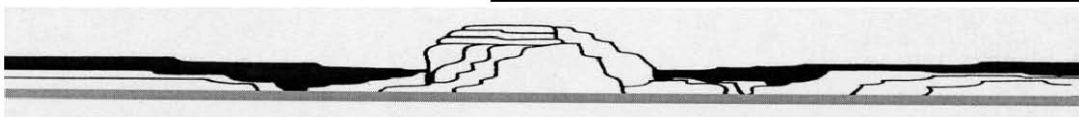
6:00 - 8:00 PM (local time)

Grand Junction City Hall
250 North 5th Street
Grand Junction, Colorado

February 28, 2004

12:00 - 2:00 PM (local time)

Lake Powell School
Glen Canyon National Recreation Area
Bullfrog, Utah



Overview of Process / Schedule

The overall planning process is anticipated to extend over a period of approximately 12 months. Project milestones include:

Project Initiation	December 2003
Data Collection and Studies	January - June 2004
Public Scoping Meetings	February 27 and 28, 2004
Scoping Period	February 1 through March 31, 2004
Public Review of Draft DCP/EA	Fall 2004
Completion of DCP/EA	Late Fall/Early Winter 2004

What does the scoping period mean? Scoping is done in the initial phase of a project to seek input from a variety of sources. The input is used to identify issues, areas requiring additional study, and topics that will be analyzed in the DCP/EA process. The scoping period is an opportunity for you to provide us with your suggestions, comments, and concerns regarding the Glen Canyon NRA uplake developed areas. Your comments will help to identify services, facilities, and infrastructure that will be evaluated in the DCP and potential environmental impacts associated with development.

Is scoping my only opportunity to comment on the DCP/EA? Once the draft DCP is developed, an EA is prepared and both documents will be made available for public review. Public comments will be collected for approximately 30 days.

Overall Objectives

The purpose of this DCP is to implement the objectives of the Glen Canyon NRA General Management Plan. Some of the broad objectives of the General Management Plan include:

- Manage the recreation area so that it provides maximal recreational enjoyment to the American public and their guests.
- Maximize the recreational experience and the number of opportunities for enjoying the recreation area.
- Provide the richest possible interpretive experience to visitors to the recreation area.
- Manage the recreation area within its legislatively imposed constraints.



BULLFROG MARINA - WET SLIPS AND BUOY FIELD

In addition to the broad planning objectives for the area, other project objectives include:

- Preserve the quality of natural resources and recreational opportunities.
- Do not exceed land development allowances and established lake carrying capacities.
- Identify range of commercial, operational, and maintenance facilities appropriate to provide visitor opportunities and services at varying lake levels and access to shorelines.



SILTATION AT HITE MARINA

We Want Your Comments!

Anyone interested in this planning effort is encouraged to visit the Glen Canyon NRA Web site at <http://www.nps.gov/glca/plan.htm>, which contains information on current project activities and links to project comment forms. Your comments can be e-mailed to:

glca_uplake_dcpea@nps.gov

Or you may send your written comments to:

**National Park Service
Glen Canyon National Recreation Area
ATTN: GLCA Uplake DCP/EA
PO Box 1507
Page, AZ 86040**

Please provide your comments to us no later than March 31, 2004

Glen Canyon National Recreation Area

National Park Service
U.S. Department of the Interior



Scoping Comment Form

Glen Canyon National Recreation Area
Uplake Development Concept Plan / Environmental Assessment

Use this form to share your thoughts with us. Feel free to attach additional sheets if necessary. Fold the form in thirds so that the National Park Service return address is visible, tape closed, add a first-class stamp, and mail. Please send us your comments by **March 31, 2004**, or respond by e-mail at: **glca_uplake_dcpea@nps.gov**

Please be aware that names and addresses of respondents may be released under the Freedom of Information Act. Our practice is to make comments, including names and home addresses of respondents, available for public review during regular business hours. Individual respondents may request that we withhold their home address from the record, which we will honor to the extent allowable by law. There also may be circumstances in which we would withhold from the record a responder's identity, as allowable by law. If you wish us to withhold your name and/or address, you must state this prominently at the beginning of your written comments. We will make all submissions from organizations or businesses and from individuals identifying themselves as representatives or officials of organizations or businesses, available for public inspection in their entirety.

Hite (including Hite, Farley Canyon, White Canyon, and Blue Notch Canyon)

What are the issues and concerns you see with development at Hite? What facilities would you like to see added or enhanced? What facilities would you like to see eliminated?

What environmental issues are of concern at Hite?

Bullfrog

What are the issues and concerns with development at Bullfrog? What facilities would you like to see added or enhanced? What facilities would you like to see eliminated?

What environmental issues are of concern at Bullfrog?

Halls Crossing

What are the issues and concerns you see with development at Halls Crossing? What facilities would you like to see added or enhanced? What facilities would you like to see eliminated?

What environmental issues are of concern at Halls Crossing?

National Park Service
c/o e²M
1510 West Canal Court, Suite 2000
Littleton, CO 80120

Please *print* your name and address below, then check any boxes that may apply.

Name: _____

Address: _____

City, State, Zip Code: _____

☐

Please add my name to the mailing list.

☐

Please keep my name on the mailing list.

☐

Please remove my name from the mailing list.

☐

Please note corrections to my name or address.

Place
Stamp
Here

National Park Service
Glen Canyon National Recreation Area
ATTN: GLCA Uplake DCP / EA
PO Box 1507
Page, AZ 86040

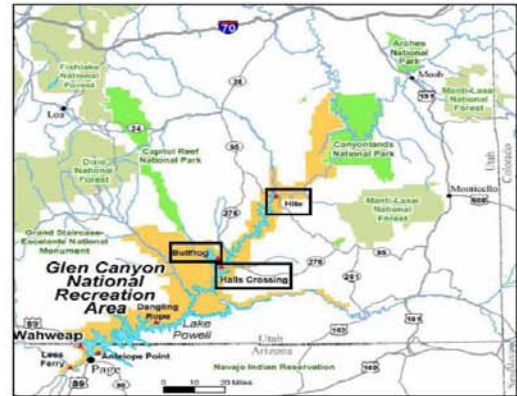
Planning Project Opportunity

Drop by this weekend to learn about the Uplake Development Concept Plan and Environmental Assessment process & progress this weekend!

Background

In December 2003, the National Park Service initiated work on a Development Concept Plan (DCP) and Environmental Assessment (EA) for Bullfrog, Halls Crossing, and Hite marina areas. The DCPs for these areas were approved almost 20 years ago and an update is needed due to changing lake conditions and the age of various facilities. This DCP will address lake access issues during fluctuating lake levels and evaluate visitor services, infrastructure, and facility needs. The new DCP is intended to guide future development for the next 15+ years. The EA will evaluate potential impacts to the environment from the DCP alternatives in accordance with the National Environmental Policy Act and the National Historic Preservation Act.

Project Study Areas



Where we are in the planning process

Completed	Item Description	Target Date
<input checked="" type="checkbox"/>	Project Initiation	December 2003
<input checked="" type="checkbox"/>	Data Collection and Studies	January - July 2004
<input checked="" type="checkbox"/>	Public Scoping Meetings	February 27 and 28, 2004
<input checked="" type="checkbox"/>	Public Comment - Scoping Period	February 1 through March 31, 2004
<input type="checkbox"/>	Develop range of DCP Alternatives	March – August 2004
<input type="checkbox"/>	Evaluation of alternatives (Development of EA document)	June – September 2004
<input type="checkbox"/>	Public Review of Draft DCP/EA	Fall 2004
<input type="checkbox"/>	Completion of DCP/EA	Late Fall/Early Winter 2005

Where you can find us this weekend!

Friday July 23rd

10:30 am - 12:30 pm	Bullfrog Conoco Fuel Station
1:30 pm - 3:30 pm	Boat-n-Go store Bullfrog Marina
4:30 pm - 6:30 pm	Bullfrog Lodge

Saturday July 24th

10:00 am - 1:00 pm	Halls Crossing Marina Store
4:30 pm - 6:30 pm	Bullfrog Lodge

Sunday July 25th

9:00 am - 11:30 am	Bullfrog Boat-Ready/Picnic Area
--------------------	---------------------------------

Other sources for Information

Anyone interested in this planning effort is encouraged to visit the Glen Canyon NRA website at <http://www.nps.gov/glca/plan.htm>, and look for Uplake Development Concept Plan (DCP) and Environmental Assessment (EA).

A draft DCP/EA document will be available for public review and comment this fall and will provide you another opportunity for input!

Want to be on our mailing list for project information? Send your mailing info to:

Glen Canyon National Recreation Area • ATTN: GLCA Uplake DCP/EA • PO Box 1507 • Page, AZ 86040
or email to: glca_uplake_dcpea@nps.gov

Glen Canyon National Recreation Area

Newsletter 2



Project Update

August 2004

Glen Canyon National Recreation Area Uplake Development Concept Plan / Environmental Assessment

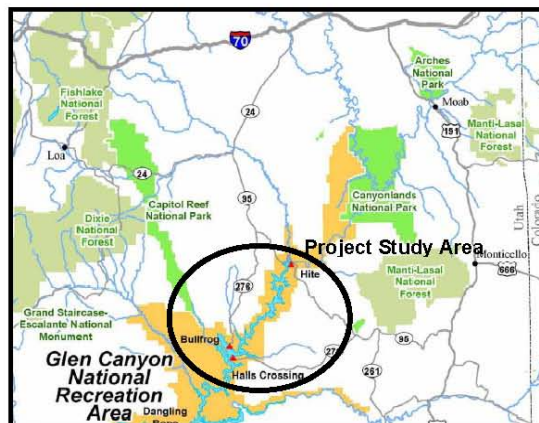
In December 2003, the National Park Service initiated work on a Development Concept Plan (DCP) and Environmental Assessment (EA) for Bullfrog, Halls Crossing, and Hite Marina areas. The DCPs for these areas were approved almost 20 years ago and an update is needed due to the changing lake conditions and the age of various lake facilities. This DCP will address lake access issues during fluctuating lake levels and will evaluate visitor services, infrastructure, and facility needs. The new DCP is intended to guide future development for the next 15-plus years. The EA will evaluate potential impacts to the environment from the DCP alternatives, in accordance with the National Environmental Policy Act and the National Historic Preservation Act.

Public Involvement

Public involvement is an integral part of the planning process. A number of public outreach activities have occurred since initiation of the work on the DCP/ EA. Public scoping meetings were held in Grand Junction, Colorado, and Bullfrog, Utah, in late February 2004. The project had an initial mailing list of 1,600 individuals, organizations, and agencies and has been expanded to include over 2,300 names. Meetings have been initiated with tribal representatives and will continue to be held throughout the planning process. A project information page has been established and is linked to the park Web site. This page provides ongoing information regarding the uplake DCP and EA. Information and draft alternatives were posted at the Bullfrog and Halls Crossing Marina areas in late July for visitor viewing.



PUBLIC SCOPING MEETING IN GRAND JUNCTION, COLORADO



Project Issues

As a result of scoping meetings with the public, other agencies and organizations, and initial feedback from tribal consultation, the following issues were identified:

- access limitations to water-based facilities at varied lake levels
- long-range impacts of siltation
- the extent and scale of facilities available at specific marina areas
- traffic congestion and parking limitations at all marinas
- maintenance and extension of launch ramps
- protection of water quality
- availability of water-based restroom / pump-out facilities
- separation of houseboat rentals from other boat storage

Project Schedule

Item Description	Target Date	Completed
Project Initiation	12/03	<input checked="" type="checkbox"/>
Data Collection and Studies	12/03 – 7/04	<input checked="" type="checkbox"/>
Public Scoping Meetings	2/04	<input checked="" type="checkbox"/>
Public Comment Scoping	2/04 – 3/04	<input checked="" type="checkbox"/>
Tribal Consultations	ongoing	<input type="checkbox"/>
Development of Alternatives	3/04 – 9/04	<input type="checkbox"/>
Evaluation of Alternatives (EA)	6/04 – 9/04	<input type="checkbox"/>
Public Review & Comment		
Draft DCP & EA	Fall 2004	<input type="checkbox"/>
Completion of DCP/EA	Early 2005	<input type="checkbox"/>

(bold items underway)

DCP Draft Alternatives Under Consideration

Four alternatives for each uplake marina location have been developed based on feedback obtained during scoping. These alternatives address identified issues and represent a range of alternatives for consideration from no new development to major new development.

- **Alternative A (the no-action alternative)** represents no change from the current size, location, or scope of facilities and management practices, except for development currently funded and already under construction.
- **Alternative B (minor development)** represents minor changes to the current facilities at the uplake marinas, primarily in the form of facility upgrades and limited expansion or improvements.
- **Alternative C (moderate development)** includes some major improvements and expansions along with upgrades to some facilities.
- **Alternative D (major development)** represents the most significant opportunities for major changes to the facilities at the uplake marinas and includes major expansion projects as well as upgrades, relocation of existing facilities, and construction of new projects.



HALLS CROSSING AT LOW WATER IN EARLY 2004

What do the alternatives under consideration mean?

Input from the public, other agencies, and organizations is used to develop ideas on how the uplake marinas are to be managed in the future. These ideas are combined into various alternatives for management. The alternatives represent different approaches to management of the uplake marinas. After careful consideration, some alternatives may be eliminated for various reasons such as disturbance to a sensitive resource or cost. Alternatives not eliminated are carried forward for a full discussion in the draft DCP as alternatives under consideration. The draft DCP will also address any alternatives that have been eliminated, stating the reason for elimination.

What are my opportunities to comment on the DCP/EA?

Once the draft DCP is developed, an EA is prepared and both documents will be made available for public review. Public comments will be collected for approximately 30 days. Public review of the DCP is expected to occur in the fall of 2004.



HITE SILTATION DELTA – NOVEMBER 2003

Low Water Consideration

The alternatives considered for each marina area address a range of facilities appropriate for different levels of development and different water elevations. Within each alternative, changes in water level could further impact the experience on the lake including:

- location of marina facilities due to shoreline changes and proximity of marina to land-based support facilities and services
- visitor experience due to reduced side channel availability for isolated camping and recreation
- safety considerations due to reduced lake surface effects on the concentration and distribution of boaters
- launch ramp access due to changes in shoreline slope as water levels recede
- water quality impacts due to concentration of use at reduced shoreline

Management strategies will be developed and included in the draft DCP/EA with each alternative to address these concerns.



BULLFROG FERRY RAMP AT LOW WATER

A brief summary of alternatives for each marina are contained in the following tables. Full descriptions of each alternative will be included in the draft DCP and EA document during the public review period this fall.

Draft Range of Alternatives - HITE & VICINITY

Alternative A (No-Action Alternative)	Alternative B (Minor Development)	Alternative C (Moderate Development)	Alternative D (Major Development)
<ul style="list-style-type: none"> Maintain employee housing Maintain family rental units Maintain primitive campground Shoreline camping Maintain grocery store / fuel pumps / post office / RV dump station Maintain day-use area at Highway 95 overlook Maintain visitor contact / EMS facilities Maintain dry boat storage Maintain launch ramp support facilities Maintain utility systems Maintain automated fee collection Maintain access (roadways and airstrip) and parking Maintain marina facilities, (rentals, buoys, and services) above lake elevation 3,610 ft. —below 3,610 ft. no marina facilities Maintain existing launching capabilities above lake elevation 3,610 ft. —below 3,610 ft. no launching Maintain river takeout access 	<ul style="list-style-type: none"> Upgrade employee housing, maintain quantities Family rental units upgraded, expanded from 5 to up to 10 units Upgrade campground amenities / utilities Define shoreline campsites, add portable toilets at low water Upgrade store / RV dump station Improve day-use area at Highway 95 overlook Maintain visitor contact / EMS facilities Maintain dry boat storage Maintain launch ramp support facilities Upgrade utility systems as needed Maintain automated fee collection Maintain access (roadways and airstrip), expand parking Maintain marina facilities; relocate rental operations / boat repair to Bullfrog above lake elevation 3,610 ft. (as long as silt levels allow) Above lake elevation 3,610 ft., implement boat size launch restrictions as necessary due to siltation—below 3,610 ft. no launching Maintain river takeout access as siltation allows, evaluate alternate takeout locations 	<ul style="list-style-type: none"> Upgrade employee housing, add up to 5 employee RV sites Family rental units upgraded, expanded from 5 to up to 20 units Upgrade campground amenities / utilities Define shoreline campsites / add portable toilets at low water Upgrade store / RV dump station; add food service, shower, and laundry Improve day-use area at Highway 95 overlook Maintain visitor contact / EMS facilities Improve screening for dry boat storage Maintain launch ramp support facilities Upgrade utility systems as needed Maintain automated fee collection Maintain access (roadways and airstrip), expand parking Limited marina facilities above lake elevation 3,610 ft. (as long as silt levels allow); relocate rental operations / boat repair to Bullfrog / Halls Crossing, reduce other services Above lake elevation 3,610 ft., implement boat size launch restrictions, as siltation necessitates establish hoisting operation to maintain access, below 3,610 ft. lake elevation no launching Maintain river takeout access as siltation allows, evaluate alternate takeout locations 	<ul style="list-style-type: none"> Upgrade employee housing, add up to 5 employee RV sites Family rental units upgraded, expanded from 5 to up to 20 units Upgrade campground amenities / utilities at Hite; add primitive camping at Blue Notch Canyon Define shoreline campsites; add portable toilets at low water Upgrade store / RV dump station; add food service, shower, and laundry Improve day-use area at Highway 95 overlook; add day use area at Hite launch ramp Maintain visitor contact / EMS facilities Improve screening; expand dry boat storage from 107 to up to 160 boats Maintain launch ramp support facilities at Hite; develop primitive launch ramp support facilities at Blue Notch Canyon Upgrade utility systems as needed at Hite; add primitive utility systems at Blue Notch Canyon Maintain automated fee collection at Hite; add fee collection at Blue Notch Canyon Maintain roadways and airstrip access; expand parking at Hite; improve Blue Notch Canyon and Red Canyon access / parking No marina facilities at Hite, fuel / pump-out at Blue Notch Canyon No launching at Hite, launch ramp constructed at Blue Notch Maintain river takeout access as siltation allows, evaluate alternate takeout locations

Draft Range of Alternatives - HALLS CROSSING

Alternative A (No-Action Alternative)	Alternative B (Minor Development)	Alternative C (Moderate Development)	Alternative D (Major Development)
<ul style="list-style-type: none"> Maintain employee housing Maintain family rental units Maintain developed campground and RV park Maintain shower / laundry facilities at campground and adjacent rental housekeeping units Maintain store / fuel station / post office Maintain San Juan County K-6 school No day-use facilities Maintain emergency services Maintain NPS maintenance area Maintain dry boat storage location / size Maintain utility systems Maintain fee collection Maintain access and parking Maintain marina facilities (buoy field, wet slips, rental boats, rental PWCs, services) Maintain main launch ramp to water elevation 3,560 ft., below 3,560 ft.—no launching Maintain ranger station / visitor contact Maintain ferry services at main ferry ramp to 3,618 ft., at main launch ramp to 3,550 ft., below 3,550 ft.—no ferry service 	<ul style="list-style-type: none"> Upgrade employee housing, expand employee RV park from 3 sites to up to 12 sites Upgrade family rental units, maintain quantity Campground and RV park upgraded, RV waste disposal upgraded, and amphitheater added Shower / laundry facilities upgraded in existing locations Post office / fuel station upgraded; store replaced Upgrade San Juan County school building Day-use area constructed adjacent lower parking lot Upgrade helipad; relocate emergency services building Maintain NPS maintenance building, install visual screening Dry boat storage relocated, no change in size Maintain utility systems Maintain fee collection Maintain access, upgrade parking as needed Maintain marina services, add fishing dock, buoy field / wet slips to be consolidated with Bullfrog (split as appropriate between the two marinas with no change in quantity of buoys—with 54 added from Hite below lake elevation 3,600 ft.), total wet slips increased from 471 to up to 524, rental boats / rental boat maintenance relocated to Bullfrog Maintain main launch ramp to water elevation 3,560 ft., below 3,560 ft. new launch ramp to be constructed Maintain ranger station / visitor contact Maintain ferry services at main ferry ramp to 3,618 ft., at main launch ramp to 3,550 ft., below 3,550 ft.—no ferry service 	<ul style="list-style-type: none"> Upgrade employee housing, expand employee housing units from 48 to up to 54 units, expand employee RV park from 3 sites to up to 12 sites Upgrade family rental units, expand from 20 to up to 40 units Campground upgraded, RV park relocated to campground, RV waste disposal upgraded, amphitheater added Shower and laundry facilities upgraded, relocated to campground Post office / fuel station upgraded, store replaced, snack bar added Upgrade San Juan County school building Day-use area constructed adjacent lower parking lot Upgrade helipad, relocate emergency services building Maintain NPS maintenance building, install visual screening Dry boat storage relocated, no change in size Maintain utility systems Maintain fee collection Maintain access (roads and airstrip), upgrade parking as needed Maintain marina services, add fishing dock, buoy field / wet slips to be consolidated with Bullfrog, split as appropriate between the two marinas with total buoys increased from 400 to up to 430 (with 54 added from Hite below lake elevation 3,600 ft.), total wet slips increased from 471 to up to 524, rental boats / rental boat maintenance relocated to Bullfrog Maintain main launch ramp to water elevation 3,560 ft., below 3,560 ft. new launch ramp to be constructed Maintain ranger station / visitor contact Maintain ferry services at main ferry ramp to 3,618 ft., at main launch ramp to 3,550 ft., below 3,550 ft.—no ferry service 	<ul style="list-style-type: none"> Upgrade employee housing, expand employee housing units from 48 to up to 61 units, expand employee RV sites from 3 to up to 12 sites Upgrade family rental units, expand from 20 to up to 60 units Campground upgraded, RV park relocated to campground, campground expanded from 96 sites to up to 135 sites, RV waste disposal upgraded; amphitheater added Shower and laundry facilities upgraded, relocated to campground Post office / fuel station upgraded; store replaced; snack bar added Upgrade San Juan County school building Day-use area constructed adjacent lower parking lot Upgrade helipad, relocate emergency services building Maintain NPS maintenance building, install visual screening; construct visitor contact station Dry boat storage relocated, increased from 230 to up to 500 boats Upgrade utility systems as needed Maintain fee collection Maintain access (roads and airstrip); upgrade parking as needed Maintain marina services; add fishing dock, upgrade fuel docks, buoy field / wet slips to be consolidated with Bullfrog (split as appropriate between the two marinas with total buoys increased from 400 to up to 455, with 54 added from Hite below lake elevation 3,600 ft.), total wet slips increased from 471 to up to 524; rental boats / rental boat maintenance relocated to Bullfrog Maintain main launch ramp to water elevation 3,560 ft., below 3,560 ft. new launch ramp to be constructed Maintain ranger station / visitor contact Maintain ferry services at main ferry ramp to 3,618 ft., at main launch ramp to 3,550 ft., below 3,550 ft.—no ferry service

July 2004 - Page 4 of 6

Draft Range of Alternatives – BULLFROG

Alternative A (No-Action Alternative)	Alternative B (Minor Development)	Alternative C (Moderate Development)	Alternative D (Major Development)
<ul style="list-style-type: none"> Maintain employee / partner housing Maintain lodge and family rental units Maintain developed campground and RV park Maintain shower / laundry facilities Maintain stores (village center store with fuel station, auto repair, gift shop, admin. offices and land-based marina store) Maintain restaurant and snack bar Maintain ranger station / visitor contact station / emergency facilities Maintain boat maintenance / repair / property maintenance facility Maintain NPS maintenance area Maintain dry boat storage location and size Maintain utility systems, continue upgrades to sewage system Maintain fee collection Maintain Lake Powell school Maintain marina facilities (buoy field, wet slips, rental boats, rental PWCs, services) Maintain 150-foot-wide main launch ramp to water elevation 3,605 ft., 75-foot-wide to 3,580 ft., north launch ramp paved to 3,583 ft., continue extending or relocating launch ramps as necessary to provide water access Maintain ferry services at main ferry ramp to 3,600 ft., ferry launch ramp location moves as water levels drop—no ferry service below 3,550 ft. 	<ul style="list-style-type: none"> Upgrade employee / partner housing, relocate all employee housing to current NPS employee housing area, increase employee / partner housing from 206 units to up to 224 units, convert public RV park to up to 24-site employee RV park, construct employee shower / laundry facility Upgrade lodge and family rental units, no change in total units Consolidate campground and RV park in campground location, expand from 102 sites to up to 180 total sites; add small store; add amphitheater Relocate shower / laundry facilities to campground Maintain stores (village center store with fuel station, auto repair, gift shop, administrative offices, land-based marina store) Expand restaurant from 180 seats to up to 250 seats Maintain ranger station / visitor contact station / emergency facilities Improve screening of boat / property maintenance area Improve screening at NPS maintenance area, expand water quality laboratory Dry boat storage expanded from 750 boats to up to 1,000 boats, screening improved, space utilization evaluated Maintain water supply, expand power supply, continue upgrades to sewer system Maintain fee collection Maintain Lake Powell school Maintain marina services, buoy field / wet slips consolidated with Halls Crossing (split as appropriate between the two marinas with no change in quantity of buoys—with 54 added from Hite below lake elevation 3,600 ft.), wet slips increased from 471 to up to 524, rental boats / rental boat maint. relocated to Bullfrog Widen main launch ramp to 150 feet to water elevation 3,580 ft. or lower, continue extending or relocating launch ramps as necessary to provide water access Maintain ferry services at main ferry ramp to 3,600 ft., ferry launch ramp location moves as water levels drop—no ferry service below 3,550 ft. 	<ul style="list-style-type: none"> Upgrade employee / partner housing, relocate all employee housing to current NPS employee housing area, increase employee / partner housing from 206 units to up to 246 units, convert public RV park to up to 24-site employee RV park, construct employee shower / laundry facility Upgrade lodge and family rental units, increase total number from 56 to up to 100 units Consolidate campground and RV park in campground location, expand from 102 sites to up to 180 total sites; add small store; add amphitheater Relocate shower / laundry facilities to campground Expand village center stores / parking, upgrade administrative offices Expand restaurant from 180 seats to up to 250 seats; add second restaurant Maintain ranger station / visitor contact station / emergency facilities Relocate boat maintenance / repair facility to dry boat storage Improve screening at NPS maintenance area; expand water quality laboratory Dry-boat storage expanded from 750 to up to 1,000 boats; screening improved, space utilization / covered storage evaluated Maintain water supply, expand power supply, evaluate alternate power sources, continue upgrades to sewer system Upgrade fee collection Maintain Lake Powell school; add library building Maintain marina services, buoy field / wet slips consolidated with Halls Crossing (split as appropriate between the two marinas with buoys increased from 400 to up to 430—with 54 added from Hite below lake elevation 3,600), wet slips increased from 471 to up to 524, all rental boats / rental boat maint. relocated to Bullfrog Widen main launch ramp to 150 feet to water elevation 3,580 ft. or lower, continue extending or relocating launch ramps as necessary to provide water access, evaluate methods to control launching Maintain ferry services at main ferry ramp to 3,600 ft., ferry launch ramp location moves as water levels drop—no ferry service below 3,550 ft. 	<ul style="list-style-type: none"> Upgrade employee / partner housing, relocate all employee housing to current NPS employee housing area, increase employee / partner housing from 206 units to up to 246 units, convert public RV park to up to 24-site employee RV park, construct employee shower / laundry facility Upgrade lodge and family rental units, increase total number from 56 to up to 150 units; add resort amenities Consolidate campground and RV park in campground location, expand from 102 sites to up to 180 total sites; add small store; add amphitheater Relocate shower and laundry facilities to campground Expand village center stores / parking; add snack bar; upgrade administrative offices Expand restaurant from 180 to up to 250 seats, add second restaurant, expand snack bar Maintain ranger station / visitor contact station / emergency facilities Relocate boat maintenance / repair facility to dry-boat storage Relocate NPS maintenance area, expand water quality laboratory Dry-boat storage expanded from 750 boats to up to 1,000 boats, screening improved, space utilization / covered storage evaluated Maintain water supply with additional water storage, expand power supply, evaluate alternate power, continue upgrades to sewer system Upgrade fee collection Maintain Lake Powell school, add library building Maintain marina services, add floating restaurant, buoy field / wet slips consolidated with Bullfrog (split as appropriate between marinas with buoys increased from 400 to up to 455—with 54 added from Hite below lake elevation 3,600 ft.), wet slips increased from 471 to up to 524, all rental boats / rental boats maint. relocated to Bullfrog Widen main launch ramp to 150 feet to water elevation 3,580 ft. or lower; continue extending or relocating launch ramps as necessary to provide water access, evaluate methods to control launching, add concessioner-only launch ramp Maintain ferry services at main ferry ramp to 3,600 ft., ferry launch ramp location moves as water levels drop—no ferry service below 3,550 ft.

Glen Canyon National Recreation Area

Newsletter 2



Project Update

Anyone interested in this planning effort is encouraged to visit the Glen Canyon NRA Web site at <http://www.nps.gov/glca/plan.htm>, which contains information on current project activities.

If you want to be added to or removed from the mailing list or have changes to your current contact information for the mailing list, please send us an e-mail at glca_uplake_dcpea@nps.gov or write to us at
Glen Canyon National Recreation Area • ATTN: GLCA Uplake DCP/EA • PO Box 1507 •
Page, AZ 86040



BULLFROG LAUNCH RAMP JULY 2004



BULLFROG LAUNCH RAMP 1967

National Park Service
Glen Canyon National Recreation Area
691 Scenic Drive / P.O. Box 1507
Page, AZ 86040

OMB # 1024-0224 (NPS # 05-018)
Expires: 03/31/2006

Survey # _____



Glen Canyon National Recreation Area 2005 Visitor Survey



Your feedback is important. The survey results will assist us in managing visitor services, improving facilities, and protecting our resources. Please note, when questions refer to Glen Canyon National Recreational Area / Lake Powell, it is in reference to the overall park. When questions refer to “the lake,” it is specific to Lake Powell.

About Your Previous Visits to the Glen Canyon National Recreation Area / Lake Powell

1. Approximately how many times (*ever*) have you visited Glen Canyon National Recreation Area / Lake Powell?

___ Never (SKIP TO QUESTION 22)
 ___ ONE time
 ___ 2 - 5 times
 ___ 6 - 10 times
 ___ more than 10 times

2. In what month and year did you LAST visit Glen Canyon National Recreation Area/Lake Powell?

Month: ___ Year: ___

3. In what month and year did you FIRST visit Glen Canyon National Recreation Area/Lake Powell?

Month: ___ Year: ___

About Your Most Recent Visit to the Glen Canyon National Recreation Area/Lake Powell

Think about the **YOUR MOST RECENT VISIT** to Glen Canyon National Recreation Area/ Lake Powell. Share your opinions about that visit when you answer the following questions.

4. During your **MOST RECENT** visit to the Glen Canyon National Recreation Area/Lake Powell, who was with you? *Please check all that apply.*

___ No one. I traveled alone
 ___ Family and/or friends
 ___ Business
 ___ Tour
 ___ Other (please specify):

- 5a. During your **MOST RECENT** visit to Glen Canyon National Recreation Area/Lake Powell, how many people were in your personal group? ___

5b. Was your personal group part of a tour group? ___ Yes ___ No

6. Where did you access the lake the last time you visited? *Please check all that apply.*

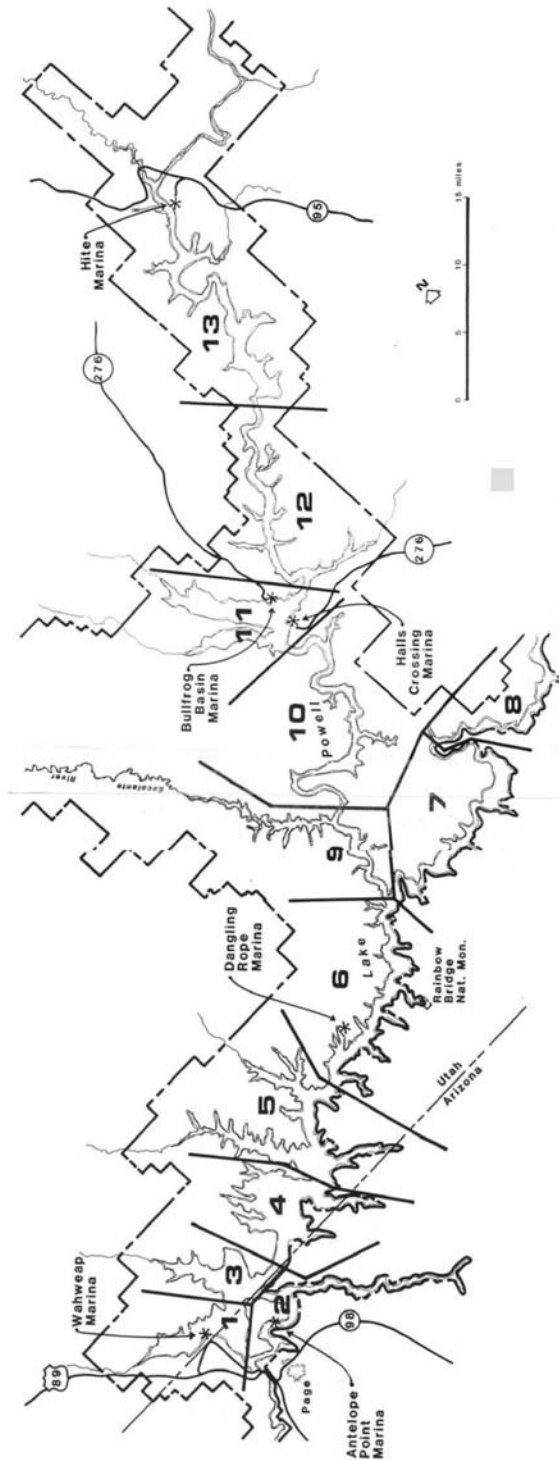
___ Wahweap /Stateline ___ Bullfrog ___ Halls Crossing ___ Hite ___ Antelope Point
 ___ Other (please specify, e.g., Lone Rock, Farley Canyon):

- 7a. Please refer to the map of Glen Canyon/ Lake Powell on the following page. Please circle the **ZONE** or **ZONES** below indicating where you spent most of your time on the lake during your most recent visit:

1 2 3 4 5 6 7 8 9 10 11 12 13

- 7b. If you shoreline camped during your most recent visit, put an "X" on the map to show your approximate camp location(s).

If you did not shoreline camp, please check here: ___



- Zone 1:** Wahweap Bay, Wahweap Marina, Lone Rock
- Zone 2:** Glen Canyon Dam, Carl Hayden Visitor Center, Antelope Point Marina
- Zone 3:** Crosby Canyon, Warm Creek Bay, Castle Rock
- Zone 4:** Padre Bay, Gunsight Butte, Crossing of the Fathers
- Zone 5:** Last Chance Bay, Rock Creek Bay, Gregory Butte
- Zone 6:** Dangling Rope Marina, Rainbow Bridge, Cathedral Canyon
- Zone 7:** San Juan Arm, Bald Rock Canyon, Piute Canyon

- Zone 8:** Nokai Canyon, Copper Canyon
- Zone 9:** Cottonwood Canyon, Hole-in-the-Rock, Escalante River
- Zone 10:** The Rincon, Iceberg Canyon, Slick Rock Canyon
- Zone 11:** Bullfrog Marina, Halls Crossing Marina, Stanton Creek
- Zone 12:** Defiance House Ruin, Forgotten Canyon, Knowles Canyon
- Zone 13:** Hite Marina, Farley Canyon, Dirty Devil River, Colorado River

8. Please look at the list of activities below. Please check *all* the activities you spent time participating in during your most recent visit to Glen Canyon National Recreation Area / Lake Powell.

- | | | |
|---|--|--|
| <input type="checkbox"/> Hiking | <input type="checkbox"/> Motor boating | <input type="checkbox"/> Driving (Burr Trail, Hole in the Rock Road, etc.) |
| <input type="checkbox"/> Fishing | <input type="checkbox"/> Paddling (canoe or kayak) | <input type="checkbox"/> Visiting archaeological sites |
| <input type="checkbox"/> Hunting | <input type="checkbox"/> Using a personal watercraft (PWC) | <input type="checkbox"/> Bird watching |
| <input type="checkbox"/> Rock Climbing | <input type="checkbox"/> Participating in water sports | <input type="checkbox"/> Other (please list): _____ |
| <input type="checkbox"/> Tour boat ride | <input type="checkbox"/> Mountain biking | |
| <input type="checkbox"/> Camping | <input type="checkbox"/> Wildlife watching | |

9. During your most recent visit to the lake, how many nights did you spend at each location listed below? Please write the number of nights spent at each location.

- | | |
|--|--|
| <input type="checkbox"/> I did not spend any nights at Lake Powell | <input type="checkbox"/> # nights backcountry camping using the lake to access |
| <input type="checkbox"/> # nights anchored on the lake | <input type="checkbox"/> # nights in a developed campground at Lake Powell |
| <input type="checkbox"/> # nights shoreline vehicle camping | <input type="checkbox"/> # nights in a lodge or housekeeping unit at Lake Powell |
| <input type="checkbox"/> # nights shoreline boat camping | <input type="checkbox"/> # nights overnight in marina facilities (covered slips, etc.) |
| | <input type="checkbox"/> # nights camping in other locations (please specify): _____ |

About your Watercraft Use on the Lake

10. How many of each type of watercraft did you use on the lake during your most recent visit? Please indicate whether you owned or rented it.

If you *did not* use any watercraft, please check here: ____.

Total number of watercraft	Type of watercraft	Number owned or co-owned	Number rented from onsite concessioner	Number rented from somewhere else
<input type="checkbox"/>	Houseboat	<input type="checkbox"/>	<input type="checkbox"/>	<input type="checkbox"/>
<input type="checkbox"/>	Runabout / Powerboat	<input type="checkbox"/>	<input type="checkbox"/>	<input type="checkbox"/>
<input type="checkbox"/>	Cabin cruiser	<input type="checkbox"/>	<input type="checkbox"/>	<input type="checkbox"/>
<input type="checkbox"/>	Personal watercraft (PWC)	<input type="checkbox"/>	<input type="checkbox"/>	<input type="checkbox"/>
<input type="checkbox"/>	Non-motorized watercraft (kayak, canoe, etc)	<input type="checkbox"/>	<input type="checkbox"/>	<input type="checkbox"/>
<input type="checkbox"/>	Water toys (skis, wakeboards, tubes, etc)	<input type="checkbox"/>	<input type="checkbox"/>	<input type="checkbox"/>
<input type="checkbox"/>	Other (please specify): _____	<input type="checkbox"/>	<input type="checkbox"/>	<input type="checkbox"/>

Your Preferences Regarding the Level of Human Activity at Glen Canyon / Lake Powell

11. During your MOST RECENT visit to Lake Powell, how did you feel about the number of people and watercraft you saw on the lake? Please check one statement in each column.

- | <u>People</u> | <u>Watercraft</u> |
|--|--|
| <input type="checkbox"/> Fewer than expected | <input type="checkbox"/> Fewer than expected |
| <input type="checkbox"/> About what I expected | <input type="checkbox"/> About what I expected |
| <input type="checkbox"/> More than expected | <input type="checkbox"/> More than expected |
| <input type="checkbox"/> Don't know | <input type="checkbox"/> Don't know |

****If you have only visited Glen Canyon/ Lake Powell one time, please skip to question 14. ****

12. During your **MOST RECENT** visit to the Glen Canyon National Recreation Area/Lake Powell, how did you feel about the level of crowding on the lake? Please check one statement that best explains how you felt.

- ☐ Less crowded than in the past
☐ About the same level of crowding as in the past
☐ More crowded than in the past
☐ Don't know
- } Skip to Q-14
 → Continue to Q-13

13. If you felt the lake was more crowded than in the past, what was the reason? Please check all that apply.

- ☐ More people and/or boats on the lake near me on the water than in the past
☐ Lower water levels in the lake than in the past
☐ More recreational activities occurring in an area
☐ Camping closer together on the shoreline
☐ Other reason (please specify): _____

14a. Excluding marinas, fueling docks, and no wake zones, which *one* statement below best describes your preference for seeing and hearing other visitors during the majority of your visit to the lake?

- ☐ I prefer seeing or hearing a lot of other visitors and enjoy social interaction with individuals not in my group
☐ I prefer seeing or hearing a moderate number of others, but not right next to my campsite or lake space
☐ I prefer seeing or hearing some others, but not total isolation
☐ I prefer seeing or hearing as few others as possible, total isolation

14b. Lower lake levels result in less lake surface area and potentially require management strategies that limit lake access to maintain similar levels of crowding on the lake. These management strategies could limit your ability to access the lake.

If lake access was limited because of low water levels, which *one* statement below best describes the maximum human activity level you would be willing to accept to ensure you continue to have lake access

- ☐ My preference would remain unchanged
☐ I would accept seeing or hearing any number of visitors to continue to have lake access
☐ I would accept seeing or hearing a moderate number of others
☐ I would accept seeing or hearing some others; I would not require total isolation
☐ I would only accept seeing or hearing as few others as possible, total isolation

15. We would like to know how you felt about seeing different levels of human activity at various locations during your most recent visit to the lake. Complete columns A, B and C for each location on the lake. If you did not visit the location, circle "no" in column A, and go to the next location. If you don't recall how you felt, circle "9" in column B.

LOCATION	COLUMN A	COLUMN B							COLUMN C
	Did you visit the location? (circle one)	In general, how acceptable was the level of human activity you saw?							If you circled 5, 6, or 7 in Column B, what made you feel this way? (Please check all that apply)
		Very Acceptable			Very Unacceptable			Don't Recall	
		1	2	3	4	5	6	7	
15a: At marina, fueling docks and no wake zones	yes	1	2	3	4	5	6	7	DR
	no (go to 15b)								<input type="checkbox"/> too few watercraft <input type="checkbox"/> too many watercraft <input type="checkbox"/> too few people <input type="checkbox"/> too many people <input type="checkbox"/> something else (specify):
15b: On the lake surface, excluding no wake zone	yes	1	2	3	4	5	6	7	DR
	no (go to 15c)								<input type="checkbox"/> too few watercraft <input type="checkbox"/> too many watercraft <input type="checkbox"/> too few people <input type="checkbox"/> too many people <input type="checkbox"/> something else (specify):
15c: On the lake shore	yes	1	2	3	4	5	6	7	DR
	no (go to 15d)								<input type="checkbox"/> too few watercraft <input type="checkbox"/> too many watercraft <input type="checkbox"/> too few people <input type="checkbox"/> too many people <input type="checkbox"/> something else (specify):
15d: While camping at shoreline	yes	1	2	3	4	5	6	7	DR
	no (go to 15e)								<input type="checkbox"/> too few watercraft <input type="checkbox"/> too many watercraft <input type="checkbox"/> too few people <input type="checkbox"/> too many people <input type="checkbox"/> something else (specify):
15e: At the launch ramp	yes	1	2	3	4	5	6	7	DR
	no (go to 15f)								<input type="checkbox"/> too few watercraft <input type="checkbox"/> too many watercraft <input type="checkbox"/> too few people <input type="checkbox"/> too many people <input type="checkbox"/> something else (specify):
15f: Other (specify):		1	2	3	4	5	6	7	DR
									<input type="checkbox"/> too few watercraft <input type="checkbox"/> too many watercraft <input type="checkbox"/> too few people <input type="checkbox"/> too many people <input type="checkbox"/> something else (specify):

16. Which of the following unsafe boating practices did you observe on your most recent visit to the lake? Please check all that apply.

- ☐ I did not observe any unsafe boating practices during my most recent visit to the lake.
☐ proximity of boats
☐ unsafe speeds
☐ nonadherence to wakeless zones
☐ other (please describe the unsafe activity and where it occurred):

Reasons for Your Visit to Glen Canyon National Recreation Area

17. Below is a list of possible experiences visitors may have while visiting Glen Canyon / Lake Powell. Please indicate how important each experience was to you *on your most recent visit*. Then, for each experience for which you circled either a 1 or 2, please indicate how much you were able to attain each of those experiences.

Experience:	Very Important	Important	Neither Important nor Unimportant	Unimportant	Very unimportant	Totally Attained	Moderately Attained	Somewhat Attained	Did Not Attain
To be on my own	1	2	3	4	5	1	2	3	4
To use my equipment	1	2	3	4	5	1	2	3	4
To experience an undeveloped lake	1	2	3	4	5	1	2	3	4
To experience nature	1	2	3	4	5	1	2	3	4
To experience natural quiet	1	2	3	4	5	1	2	3	4
To do something with my family	1	2	3	4	5	1	2	3	4
To be with members of my group	1	2	3	4	5	1	2	3	4
To be with people who enjoy the same things I do	1	2	3	4	5	1	2	3	4
To meet new people	1	2	3	4	5	1	2	3	4
To participate in recreational activities	1	2	3	4	5	1	2	3	4
To learn about the cultural history of the area	1	2	3	4	5	1	2	3	4
To learn about the natural history of the area	1	2	3	4	5	1	2	3	4
To participate in interpretive and educational activities	1	2	3	4	5	1	2	3	4
To experience new and different things	1	2	3	4	5	1	2	3	4
To test my skills and abilities	1	2	3	4	5	1	2	3	4
To stargaze	1	2	3	4	5	1	2	3	4
To enjoy the scenery of Lake Powell	1	2	3	4	5	1	2	3	4
To think about my personal values	1	2	3	4	5	1	2	3	4
To be close to nature	1	2	3	4	5	1	2	3	4
To challenge myself	1	2	3	4	5	1	2	3	4
To sketch, paint or take photographs	1	2	3	4	5	1	2	3	4
To get exercise	1	2	3	4	5	1	2	3	4
To be away from other people	1	2	3	4	5	1	2	3	4
To relax physically	1	2	3	4	5	1	2	3	4
To experience solitude	1	2	3	4	5	1	2	3	4
To get away from the usual demands of life	1	2	3	4	5	1	2	3	4
To have thrills and excitement	1	2	3	4	5	1	2	3	4
To share my skill and knowledge with others	1	2	3	4	5	1	2	3	4
To feel healthier	1	2	3	4	5	1	2	3	4

Other (Please specify): _____

Situations Experienced While Visiting Glen Canyon/Lake Powell

18a. This question concerns possible situations you may have experienced while visiting the Glen Canyon National Recreation Area/Lake Powell. Please indicate the problem level for each situation below. Circle one number that best describes how much of a problem, if any, you found each to be.

Situation:	No Problem	Slight Problem	Moderate Problem	Serious Problem	Very Serious Problem	Don't Know
Finding an unoccupied campsite	1	2	3	4	5	DK
Finding a beach campsite	1	2	3	4	5	DK
Litter on beaches and shoreline	1	2	3	4	5	DK
Poor water quality	1	2	3	4	5	DK
Sufficient navigational aids on Lake Powell	1	2	3	4	5	DK
People being inconsiderate	1	2	3	4	5	DK
Too many motorized watercraft on the lake	1	2	3	4	5	DK
The number of commercial tour boats	1	2	3	4	5	DK
Unsafe operation of motorized watercraft	1	2	3	4	5	DK
Boats closer to my boat than I like	1	2	3	4	5	DK
The level of noise on the lake	1	2	3	4	5	DK
Conflicts with others for beach space	1	2	3	4	5	DK
Conflicts with watercraft operators on lake	1	2	3	4	5	DK
Evidence of pets and their droppings	1	2	3	4	5	DK
Adequate toilet facilities at landings	1	2	3	4	5	DK
Adequate floating toilet facilities on lake	1	2	3	4	5	DK
Human waste on lake shore or in water	1	2	3	4	5	DK
Confusion about rules and regulations	1	2	3	4	5	DK
Amount of light on the lake at night	1	2	3	4	5	DK
Amount of light at the marinas at night	1	2	3	4	5	DK
Evidence of livestock	1	2	3	4	5	DK
Evidence of mining operations	1	2	3	4	5	DK
Availability of National Park Service presence on the lake	1	2	3	4	5	DK
Availability of interpretive and educational opportunities	1	2	3	4	5	DK
Noise from airplanes	1	2	3	4	5	DK
Amount of time spent waiting in line to launch boat	1	2	3	4	5	DK
Travel farther on the lake to find solitude	1	2	3	4	5	DK
Travel farther on the lake to find fuel	1	2	3	4	5	DK
Travel farther on the lake to find shoreline campsite	1	2	3	4	5	DK
Amount of time spent to park trailer & tow vehicle	1	2	3	4	5	DK
Amount of time spent to shuttle back to marina	1	2	3	4	5	DK
Management of visitor activity on the lake	1	2	3	4	5	DK
Other things (please specify)						

18b. If you circled 4 or 5 for any of the situations, please describe the problems you encountered:

Management Actions at the Glen Canyon National Recreation Area/Lake Powell

19. Given the conditions in the Glen Canyon National Recreation Area, to what extent do you 'support' or 'oppose' each of the following possible management actions? Circle one number for each action.

After you have looked over the list, please rank the TOP FIVE management actions that you feel the most strongly about. (Rank the actions that you believe are the most important for the National Park Service to consider, with a "1" being the most important, by putting a 1, 2, 3, 4, or 5 in front of the management actions.)

Rank	Management Action:	Strongly Support	Support	Neither Support nor Oppose	Oppose	Strongly Oppose
_____	Establish specific use zones	1	2	3	4	5
_____	Establish zones to protect sensitive resources	1	2	3	4	5
_____	Limit number of boats allowed on lake	1	2	3	4	5
_____	Limit number of motorized watercraft allowed on lake at any one time	1	2	3	4	5
_____	Limit number of non-motorized watercraft allowed on lake at any one time	1	2	3	4	5
_____	Regulate the number of people using lake at any one time	1	2	3	4	5
_____	Regulate the number of people <i>per group</i> allowed on lake	1	2	3	4	5
_____	Improve public access to the lake	1	2	3	4	5
_____	Expand the number of marina slips	1	2	3	4	5
_____	Expand existing facility development	1	2	3	4	5
_____	Provide more information to visitors about appropriate behavior	1	2	3	4	5
_____	Provide more park rangers on the lake to educate visitors about appropriate behavior	1	2	3	4	5
_____	Require visitors to learn about appropriate behavior on the lake	1	2	3	4	5
_____	More aggressively enforce safety rules and regulations on lake	1	2	3	4	5
_____	Provide visitors with more educational information about the area	1	2	3	4	5
_____	Designate some areas for specific types of watercraft use	1	2	3	4	5
_____	Use management controls to prevent conflicts between lake users	1	2	3	4	5
_____	Use management controls to prevent damage to the environment by visitors	1	2	3	4	5
_____	Provide more toilet facilities on the water	1	2	3	4	5
_____	Close area to pets	1	2	3	4	5
_____	More rules governing the types of recreation that can take place at various locations	1	2	3	4	5
_____	Improve boater education and orientation	1	2	3	4	5
_____	Increase facilities on the shoreline (launch ramps, parking, etc)	1	2	3	4	5
_____	Increase services on the shoreline (fueling stations, slips, buoys, etc)	1	2	3	4	5
_____	Other things (please specify):	1	2	3	4	5

Service Quality and Visitor Satisfaction While Visiting Glen Canyon/Lake Powell

20. How satisfied were you with the quality of the services provided for you at Glen Canyon National Recreation Area/ Lake Powell? Circle one number for each item.

<u>Service</u>	Very Satisfied	Somewhat Satisfied	Neither Satisfied nor Dissatisfied	Somewhat Dissatisfied	Very Dissatisfied	Did not Use/Don't know
Visitor information	1	2	3	4	5	DK
Exhibits and other educational materials	1	2	3	4	5	DK
Concessioner food service	1	2	3	4	5	DK
Concessioner lodging	1	2	3	4	5	DK
Concessioner retail stores	1	2	3	4	5	DK
Concessioner boat rentals	1	2	3	4	5	DK
Land based visitor facilities (e.g., lodge, visitor center, etc.)	1	2	3	4	5	DK
Water based visitor facilities (e.g., marina, pump outs, etc.)	1	2	3	4	5	DK
Interpretive and educational activities	1	2	3	4	5	DK
National Park Service employee assistance	1	2	3	4	5	DK
Concessioner employee assistance	1	2	3	4	5	DK
Overall quality of services	1	2	3	4	5	DK

21. Please describe any activities or services you think should be offered at Lake Powell that currently are not offered?

About You

22. What is your gender? ____ Female ____ Male

23. What is your age? ____ years

24. What is the highest level of education you have completed? (Check one)

- ☐ Some high school
☐ High school graduate or GED
☐ Some college, business or trade school
☐ College graduate
☐ Post Graduate

25. What was your total household income (before taxes) in 2004? (check one):

- ☐ Less than \$25,000
☐ \$25,000 to \$49,999
☐ \$50,000 to \$74,999
☐ \$75,000 to \$99,999
☐ \$100,000 or more

26. In what ethnicity and race would you place yourself?

Ethnicity

- ☐ Hispanic or Latino
☐ Not Hispanic or Latino

Race. Please check all that apply.

- ☐ American Indian or Alaska Native
☐ Asian
☐ Black or African American
☐ Native Hawaiian or other Pacific Islander
☐ White

27. Please share any additional comments about your visit to the Glen Canyon National Recreation Area or any suggestions you may have about managing the area.

Thank you for your help!

Please return this questionnaire using the prepaid, self-addressed envelope provided.

If you want more information about this study, contact the University of Minnesota Cooperative Park Studies Program, 115 Green Hall, 1530 Cleveland Avenue North, St. Paul, MN 55108-1027, 612-624-2721.

16 U.S.C. 1a-7 authorizes collection of this information. This information will be used by the National Park Service to improve resource management and planning and better serve the public. Response to this request is voluntary. No action may be taken against you for refusing to supply the information requested. The information you provide will be anonymous. Please do not put your name or that of any member of your group on the questionnaire. Public reporting burden for this form is estimated to average 20 minutes per respondent. Direct comments regarding the burden estimate or any other aspect of this form to the Attention Desk Officer for the Interior Department, Paperwork Reduction Project 1024-0224 (NPS99-024), and to the Information Collection Clearance Officer, WASO APC, Accountability and Audits Team, National Park Service, 1849 C Street, N.W., Washington, D.C. 20240. An agency may not conduct or sponsor, and a person is not required to respond to, a collection of information unless it displays a currently valid OMB control number.

