



United States Department of the Interior



NATIONAL PARK SERVICE
National Mall and Memorial Parks
900 Ohio Drive, S.W.
Washington, D.C. 20024-2000

September 18, 2014

Mr. David Maloney
State Historic Preservation Officer
District of Columbia, Office of Planning
1100 4th Street SW, Suite E650
Washington D.C. 20024

Subject: Vietnam Veterans Memorial Center- Annual Update

David
Dear Mr. Maloney:

This letter is to respond to the consultation requirements of Stipulation V and IX of the Memorandum of Agreement (MOA) among the National Park Service, the Vietnam Veterans Memorial Fund, and the Advisory Council on Historic Preservation, the National Capital Planning Commission (NCPCC), and the District of Columbia State Historic Preservation Officer regarding construction of the Vietnam Veterans Memorial Center.

The MOA, executed June 25, 2012, requires an annual update on the undertaking. Additionally, after the preliminary design of the Memorial Center is approved by the NCPCC, consultation on the Memorial Center design will continue with the Signatories, Invited Signatories, and Consulting Parties regarding design refinements and other measures that could further avoid, minimize or mitigate adverse effects on historic properties.

The Commission of Fine Arts (CFA), at its April 2014 meeting requested further study of the entry experience to the memorial center. In response, the Vietnam Veterans Memorial Fund consulted with the design team and presented an amended study to the Commission of Fine Arts at its July 2014 meeting. The study was well received and has resulted in the removal of the wall along the entrance way, the removal of yet another skylight portal, and the simplification of the ground plane planting. Since July, we have coordinated the revised entry scheme to meet access and security concerns, the result of which has been the adjusted location of one tree within the historic tree planting plan. We have enclosed a graphic presentation that shows the current state of the project to fulfill the responsibilities of the 2012 MOA.

We find that the amendments would not constitute additional adverse impact and seek your concurrence. We are hopeful of your favorable review as we hope to submit this amended design for consideration by the National Capital Planning Commission in December 2014.

Please contact Catherine Dewey, Acting Chief of Resource Management Division, at 202-245-4711 if you would like to discuss this amendment.

Sincerely,

A handwritten signature in black ink, appearing to read 'Bob', written over a horizontal line.

Robert A. Vogel
Superintendent
National Mall and Memorial Parks

Attachment

RECONSIDERED DESIGN: Site Plan

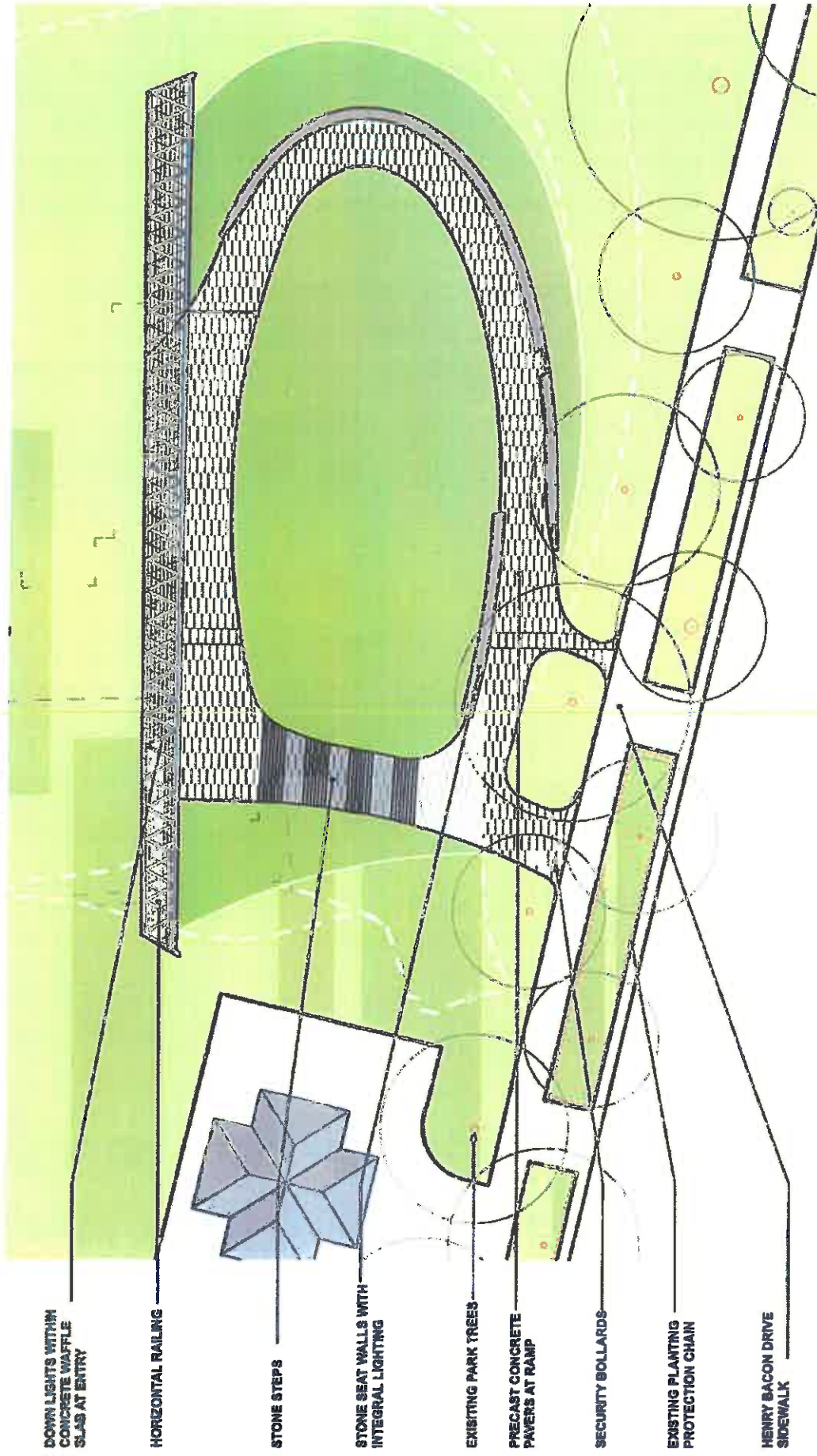


RECONSIDERED DESIGN: Aerial View from North East



Education Center at The Wall
ENNEAD ARCHITECTS
08.08.14

RECONSIDERED DESIGN: Partial Site Plan at Approach



RECONSIDERED DESIGN: View from Bottom of Entry Ramp



Education Center at The Walt
Disney World
© 2014

RECONSIDERED DESIGN: View from Henry Bacon Sidewalk



Education Center at The Wall
ENHEAD ARCHITECTS
09.09.14