

Lake Mead National Recreation Area

General Management Plan Amendment / Low Water Plan /

Environmental Assessment

Arizona • Nevada

October 2017

National Park Service
U.S. Department of the Interior



Welcome!

Open House for the Lake Mead National Recreation Area General Management Plan (GMP) Amendment – Low Water Plan / Environmental Assessment (EA).

How to Comment:

Public Comment Period is open through November 5, 2017

There are several ways to provide input on the GMP/EA:

- Fill out a comment card at this meeting.
- Submit comments electronically (preferred) at: <http://parkplanning.nps.gov/LAKE>.
- Submit written comments at park headquarters or by mail to the following central address for this project:

Lake Mead National Recreation Area

Compliance Office

601 Nevada Way

Boulder City, NV 89005

Meeting Agenda

6:00 p.m.– 6:15 p.m. Sign-in and Open House

6:15 p.m. – 6:20 p.m. Welcome from the National Park Service

6:20 p.m. – 8:00 p.m. Open House



Lake Mead National Recreation Area

General Management Plan Amendment / Low Water Plan /

Environmental Assessment

Arizona • Nevada

October 2017

National Park Service
U.S. Department of the Interior



Purpose and Need for Action/Plan Objectives

The purpose of this General Management Plan Amendment Low Water Plan / Environmental Assessment is to provide a long-term strategy for addressing operational needs to maintain lake access and to provide safe and diverse recreational opportunities at lake elevations below 1,050 feet.

A plan is needed to address the fluctuating water level of Lake Mead, which presents challenges for managing facilities and operations, while ensuring protection of park resources and providing a quality visitor experiences.

The objectives of the proposed plan are to:

- Provide visitor and staff safety. Provide clear, safe, and efficient visitor circulation on land and in the lake.
- Provide quality recreational experiences. Provide diverse, recreational experiences with quality customer service on land and water for multiple groups and abilities.
- Provide facilities and services for visitors. Determine which facilities or services can be sustained at different elevations.
- Protect the natural, scenic, and cultural resources of the areas. One of the key elements in maintaining a quality recreational setting is protecting the resources that make that recreational visit enjoyable.



Lake Mead National Recreation Area

General Management Plan Amendment / Low Water Plan /

Environmental Assessment

Arizona • Nevada

October 2017

National Park Service
U.S. Department of the Interior



Proposed Action and Possible Alternatives

A proposed action is the initial NPS proposal to address a purpose and need. A proposed action is one option for addressing purpose and need. When preparing an environmental assessment, you will develop alternatives to the proposed action that constitute different ways to address purpose and need.

Project Proposed Action: Provide existing facilities and services at/in proximity to existing areas to the maximum extent physically and financially feasible as lake levels change. Maintain current marina capacity spread across those locations. Option for visitor access may be maintained, even if some facilities and services change.

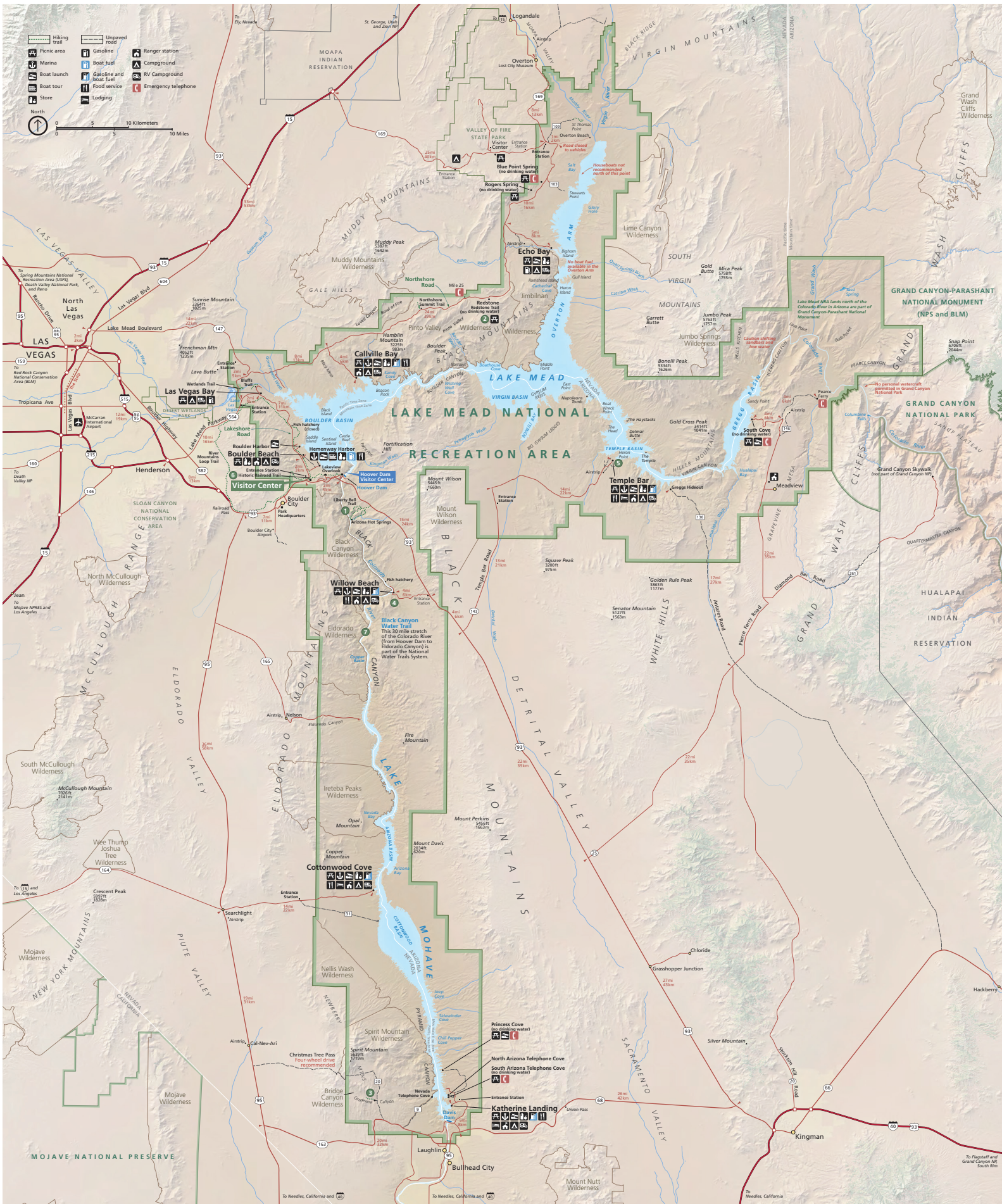
Other Possible Alternatives: Maintain a full array of facilities and services in areas that are most buffered by changing lake levels, while reducing the amount of (full-scale) facilities and services on the lake at the most challenging locations. Some new areas and types of services could be explored.

No Action – Continue to respond to changing lake levels and associated facility needs on a case-by-case basis.

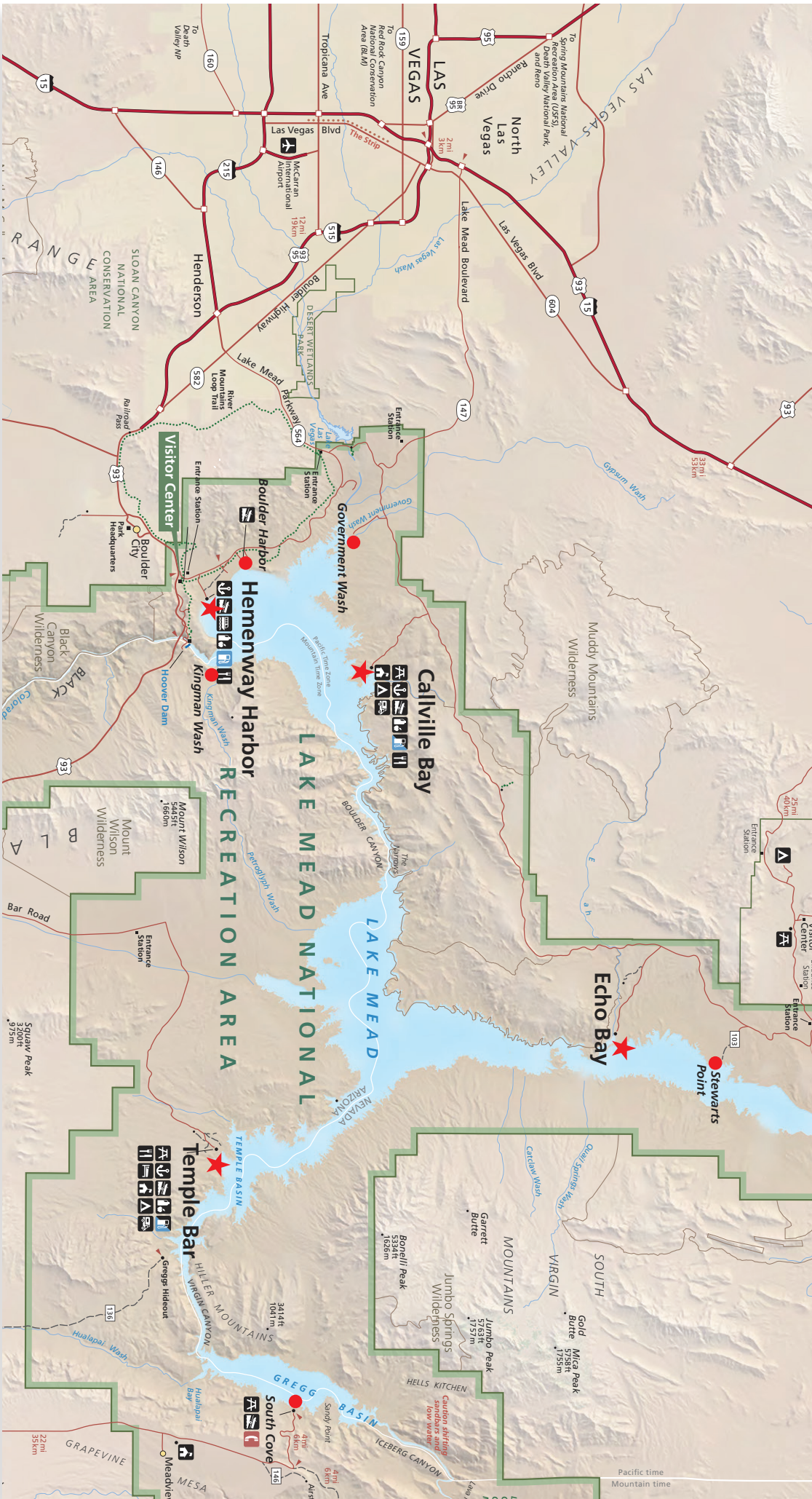
Is there anything you would like to share with the planning team about the proposed action and possible alternatives?



Park Map



Project Area



Lake Mead National Recreation Area

General Management Plan Amendment / Low Water Plan /

Environmental Assessment

Arizona • Nevada

October 2017

National Park Service
U.S. Department of the Interior



Planning Process and Time Line

Planning Process: The NPS is preparing this General Management Plan Amendment Low Water Plan/Environmental Assessment in accordance with the National Environmental Policy Act (NEPA), which requires federal agencies to analyze impacts to the environment for any major federal action. Milestones in the NEPA process and an anticipated timeline are as follows:

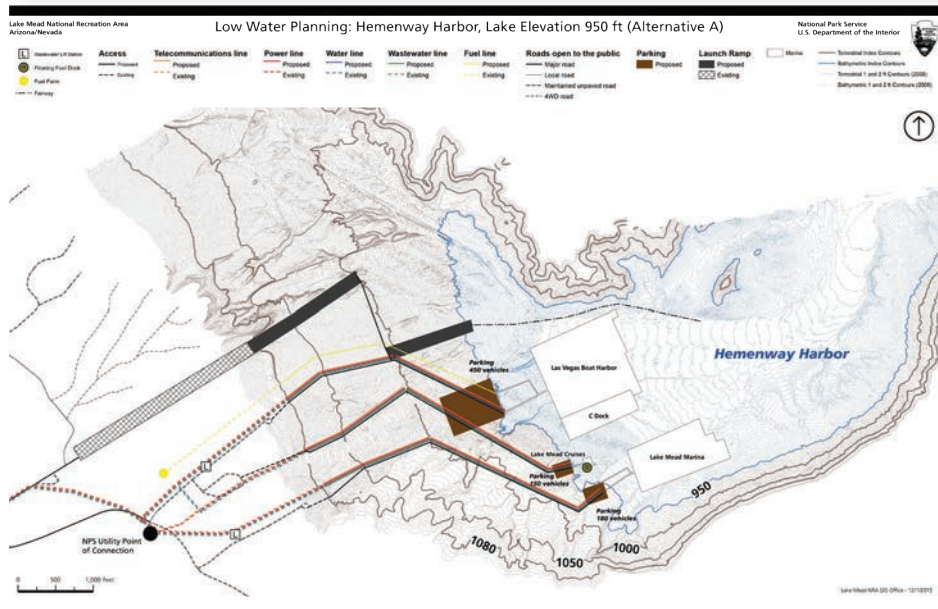
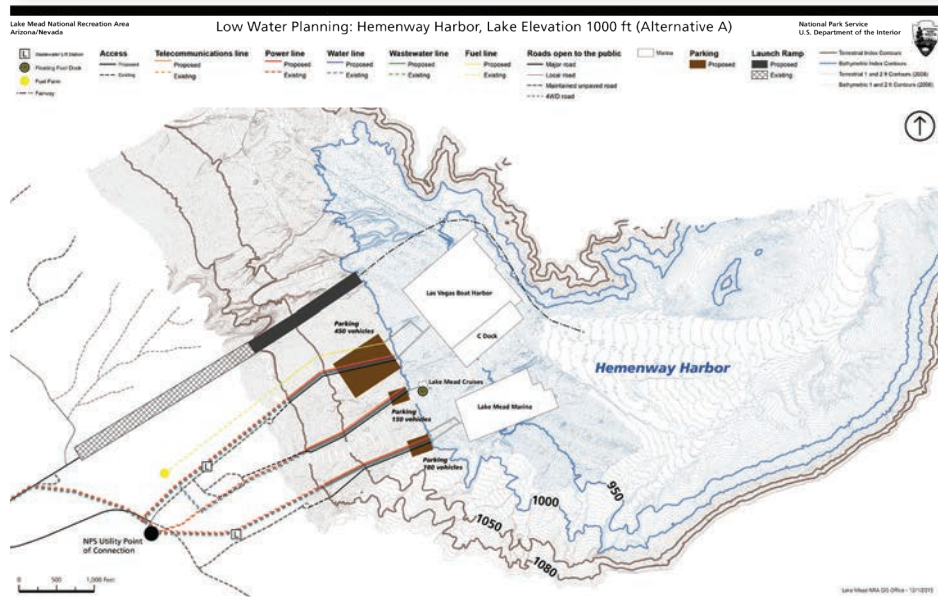
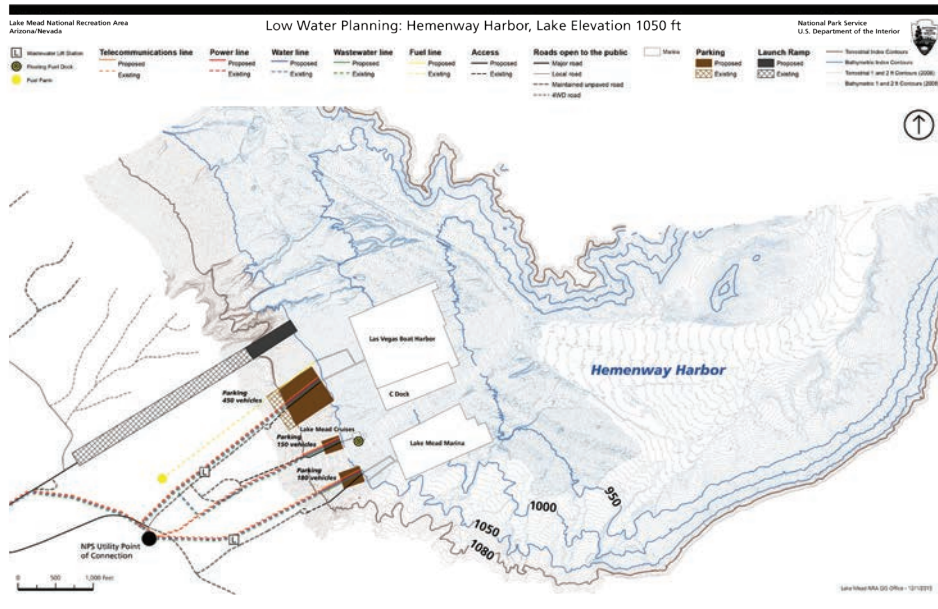
WE ARE HERE	Internal Scoping	June 2017
	Public Scoping	October 2017
	Develop and Refine Preliminary Alternatives	January – Spring 2018
	Regional Approval of Preferred Alternative	Late Spring 2018
	Document Preparation and Review	Summer 2018
	Public Review of Document	Fall 2018
	Decision Document (Finding of No Significant Impact [FONSI])	January 2019

Through this GMP amendment, Lake Mead National Recreation Area will be able to plan for anticipated lower lake levels and manage facilities and operations to maintain a quality visitor experience and protect the park's fundamental resources and values.



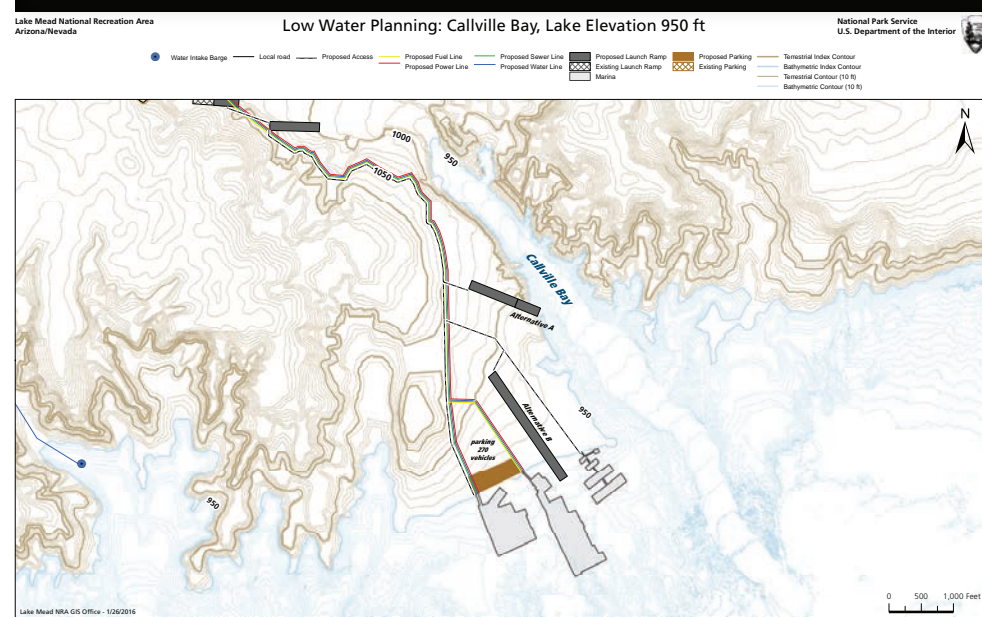
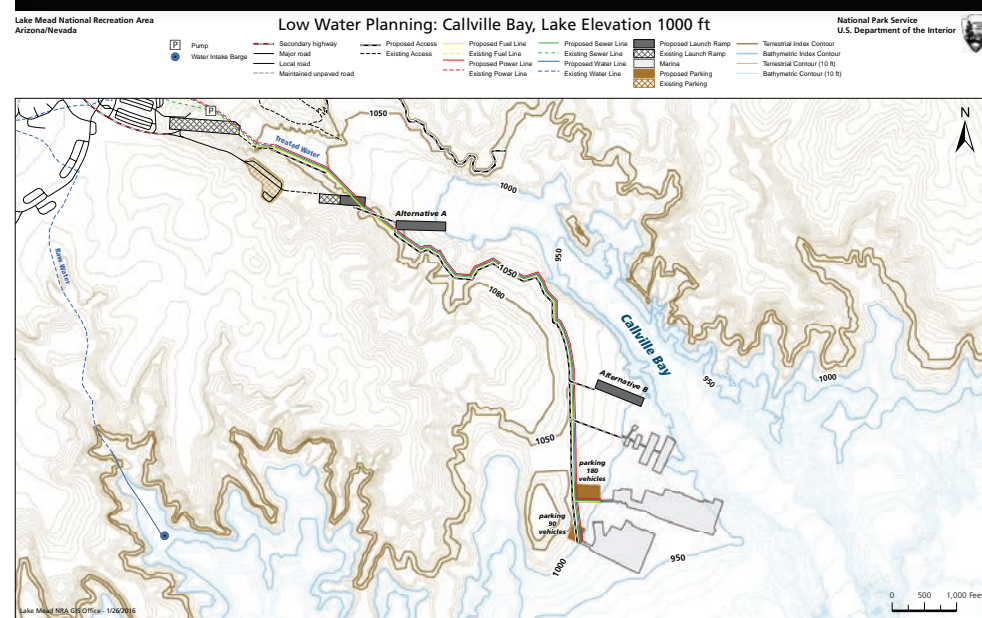
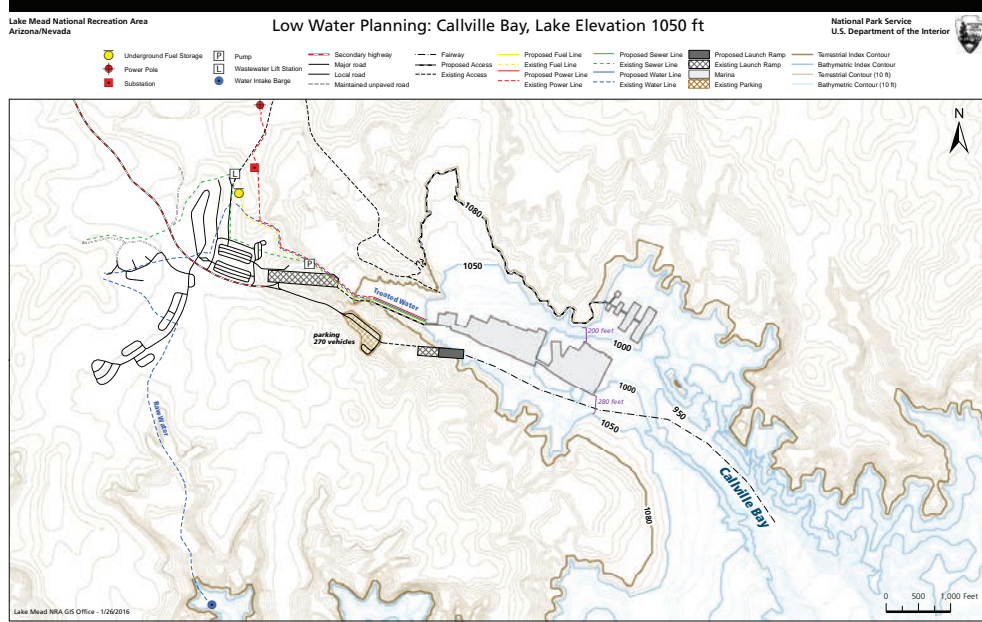
Hemenway Harbor

Is there anything you would like to share with the planning team about the proposed actions at Hemenway Harbor?



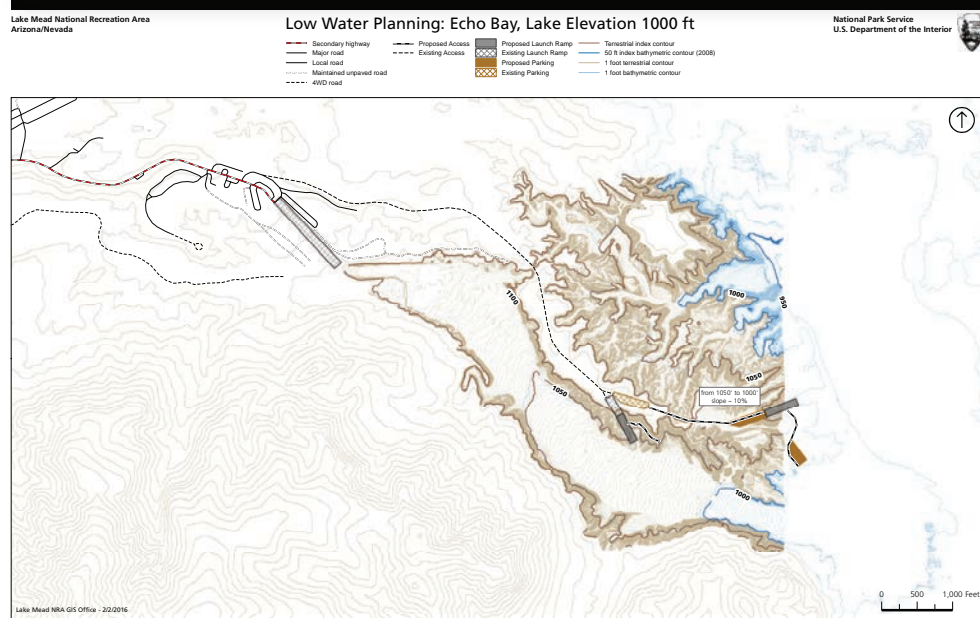
Callville Bay

Is there anything you would like to share with the planning team about the proposed actions at Callville Bay?



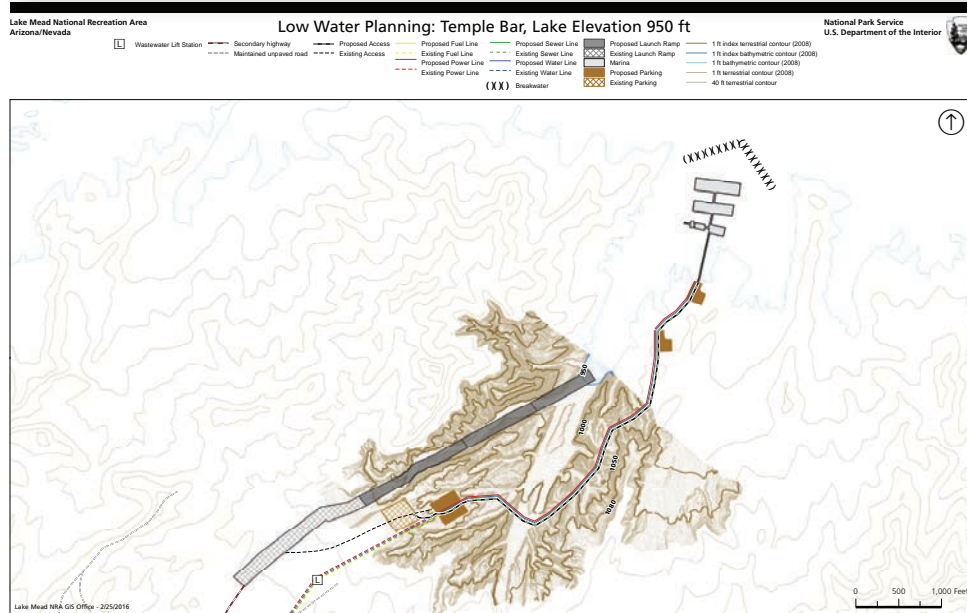
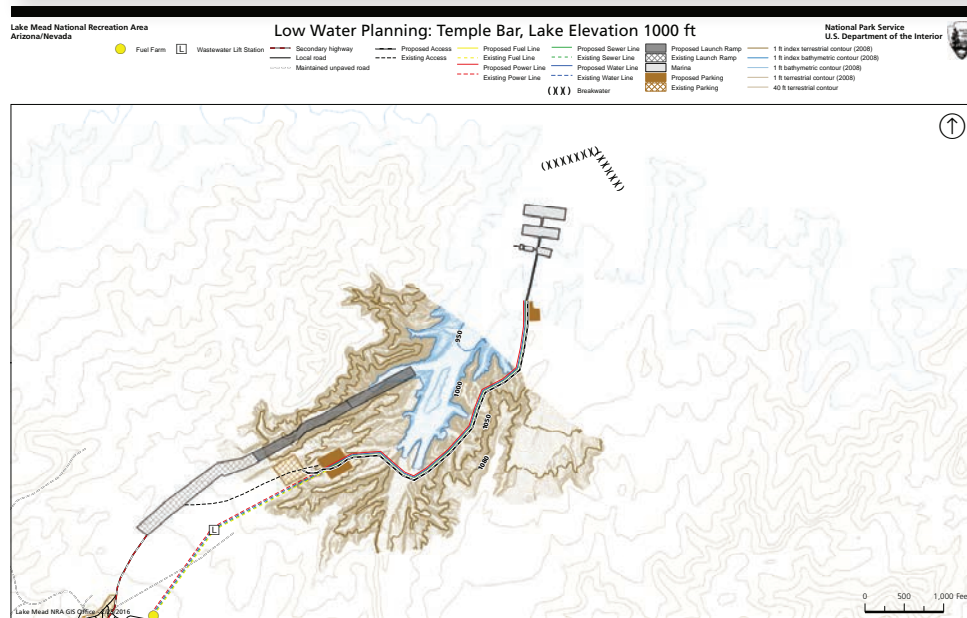
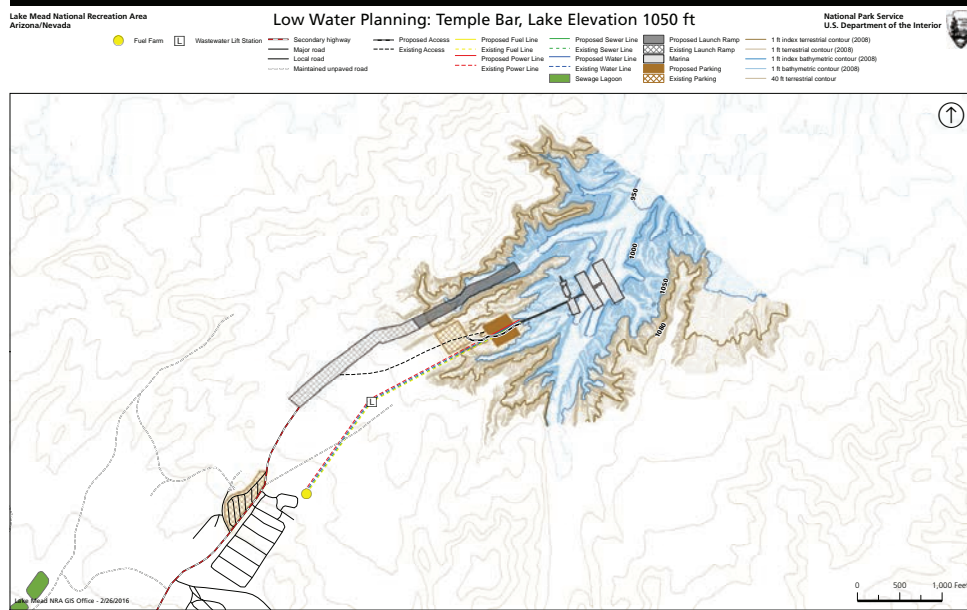
Echo Bay

Is there anything you would like to share with the planning team about the proposed actions at Echo Bay?



Temple Bar

Is there anything you would like to share with the planning team about the proposed actions at Temple Bar?



South Cove

Is there anything you would like to share with the planning team about the proposed actions at South Cove?

