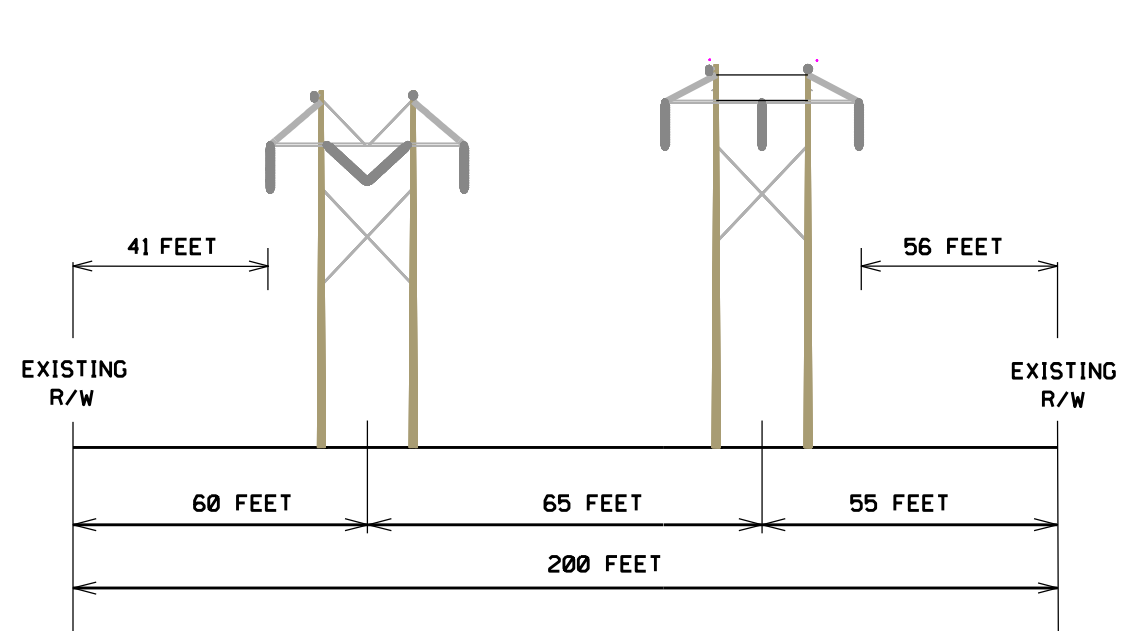


FREDERICKSBURG

EXISTING
230KV CIRCUIT
(LINE #2090)

EXISTING
115KV CIRCUIT
(LINE #47)



EXISTING CONFIGURATION

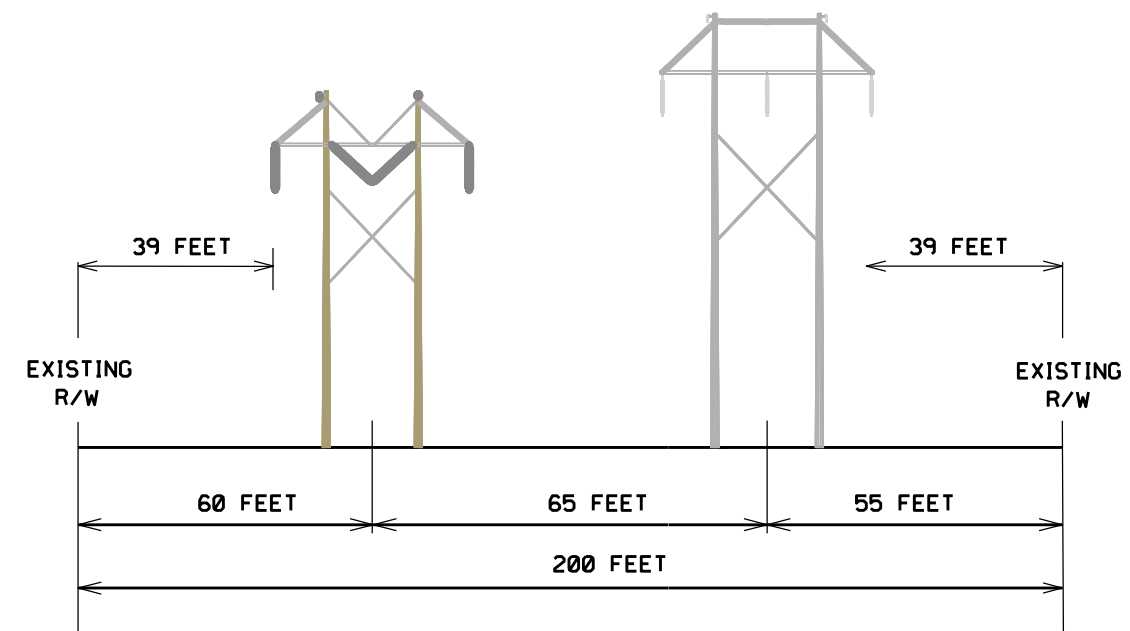
TYPICAL RIGHT OF WAY LOOKING TOWARD FREDERICKSBURG SUBSTATION

TYPE OF STRUCTURE:	WOOD H-FRAME
FOUNDATION :	DIRECT BURIED
APPROXIMATE AVERAGE HEIGHT:	72 FEET
WIDTH AT CROSSARM:	38 FEET
WIDTH AT BASE:	18 FEET
APPROX. AVERAGE SPAN LENGTH:	468 FEET
CONDUCTOR TYPE:	1-795 ACSR
RIGHT OF WAY WIDTH:	180-200 FEET
APPROXIMATE LENGTH OF LINE :	2.3 MILES

FREDERICKSBURG

PROPOSED
230KV CIRCUIT
(LINE #2090)

PROPOSED
115KV CIRCUIT
(LINE #47)



PROPOSED CONFIGURATION

TYPICAL RIGHT OF WAY LOOKING TOWARD FREDERICKSBURG SUBSTATION

TYPE OF STRUCTURE:	STEEL H-FRAME
FOUNDATION :	DIRECT BURIED
APPROXIMATE AVERAGE HEIGHT:	78 FEET
WIDTH AT CROSSARM:	42 FEET
WIDTH AT BASE:	20 FEET
APPROX. AVERAGE SPAN LENGTH:	630 FEET
CONDUCTOR TYPE:	2-636 ACSR
RIGHT OF WAY WIDTH:	180-200 FEET
APPROXIMATE LENGTH OF LINE :	2.3 MILES