



Welcome!

Public Meeting for Thomas Jefferson Memorial Targeted Accessibility Improvement Program



6:30 – 7:00 PM	Gathering, Sign-In, Review Meeting Materials
7:00 – 7:30 PM	Formal Presentation
7:30 – 8:30 PM	Questions and Answers, Provide Comments

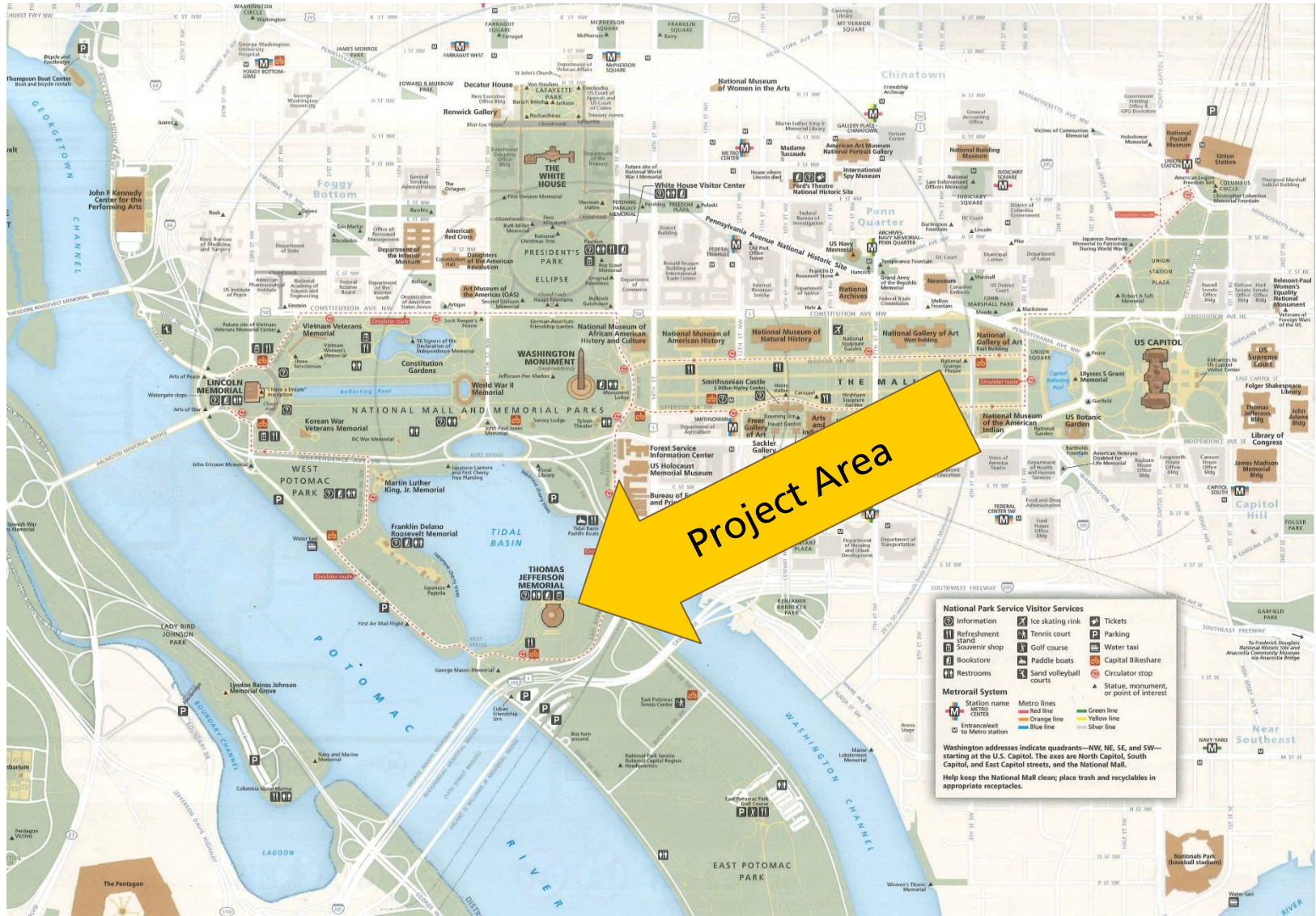


Meeting Purpose

- Gather input
 - What are the issues?
 - What improvements should be made?
 - What are your concerns?
- Provide initial goals, ideas, and concepts



Project Location





Project Location



Memorial History

- 1939: Construction began with cornerstone laid on Nov 15
- 1966: Listed in National Register of Historic Places



Purpose of the Project

- Remove or reduce barriers to access for all visitors to the Memorial.
- Improve experience of all visitors to the Memorial.





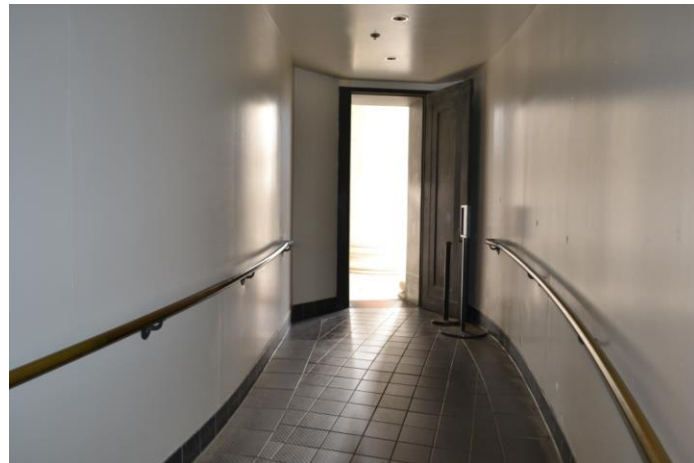
Why is the project needed?

- Accessible route to the interior is over 1,000 feet long and winding.
- There is only one accessible route to the chamber level.



Why is the project needed?

- Elements of the Memorial interior present barriers to access. Including
 - Interpretive exhibits
 - Physical elements





Why is the project needed?

- Designated accessible parking may be blocked by buses.
- No access aisle protected from traffic.

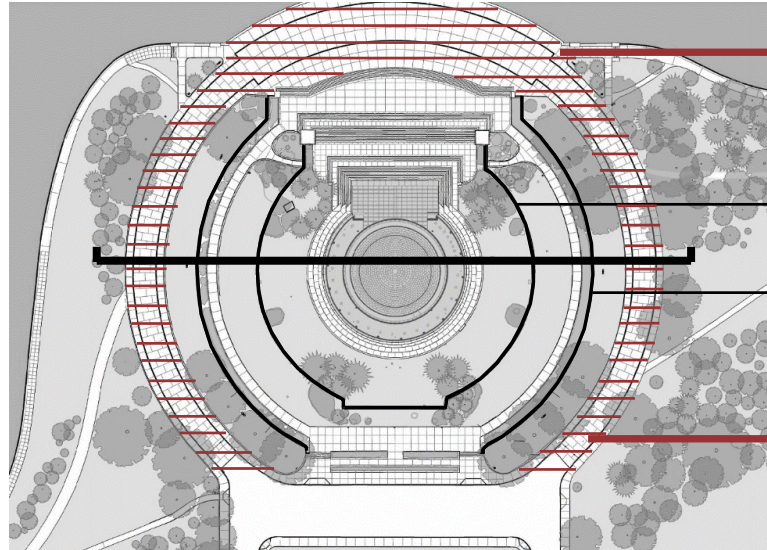




Existing Levels of Memorial



Circular Roadway



Tidal Basin Plaza Level

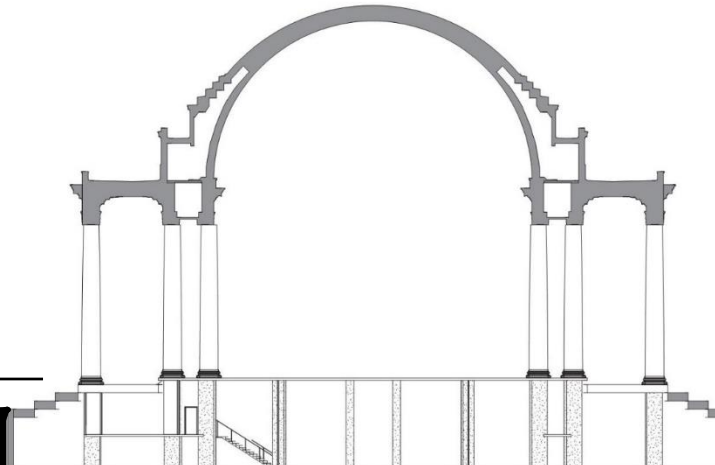
Upper Terrace Wall

Lower Terrace Wall

Circular Roadway

Chamber Level (31.58')

Upper Terrace (~21.14')



Portico Level (29.86')

Lower Terrace (~10.51')

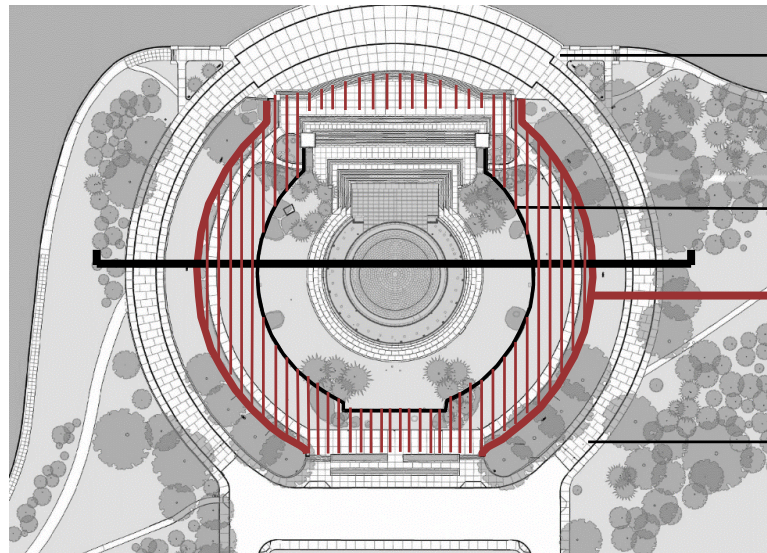
**Lower Level
(8.04')**



Existing Levels of Memorial



Lower Terrace Wall



Tidal Basin Plaza Level

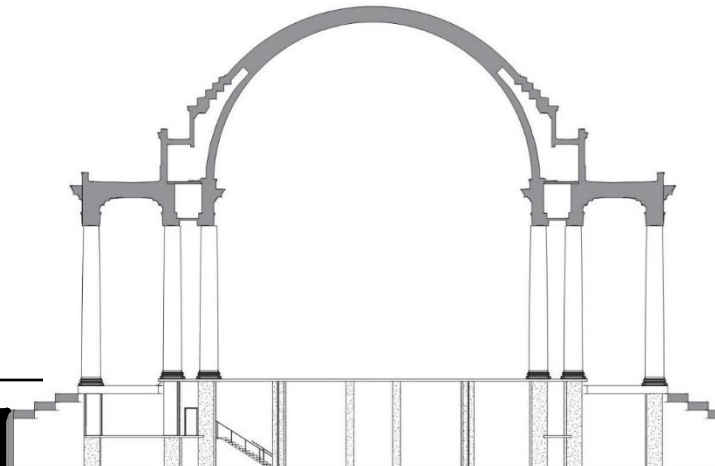
Upper Terrace Wall

Lower Terrace Wall

Circular Roadway

Chamber Level (31.58')

Upper Terrace (~21.14')



Portico Level (29.86')

Lower Level
(8.04')

Lower Terrace (~10.51')

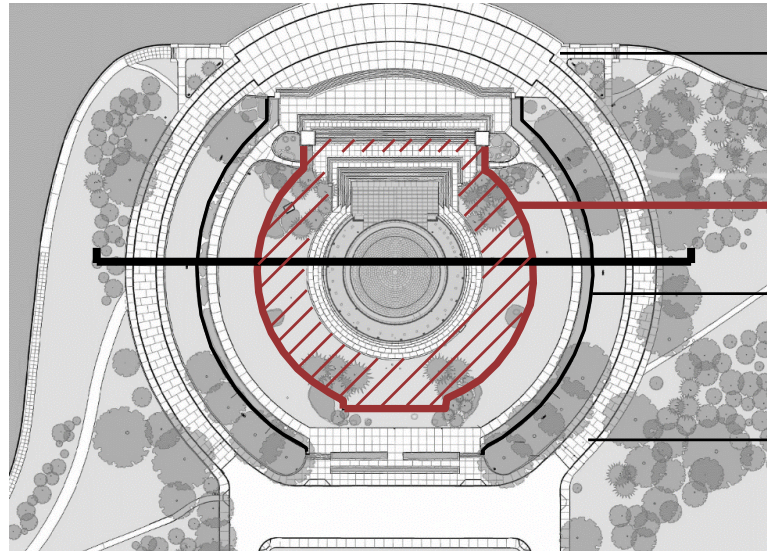


Existing Levels of Memorial



Lower Terrace

Upper Terrace Wall



Tidal Basin Plaza Level

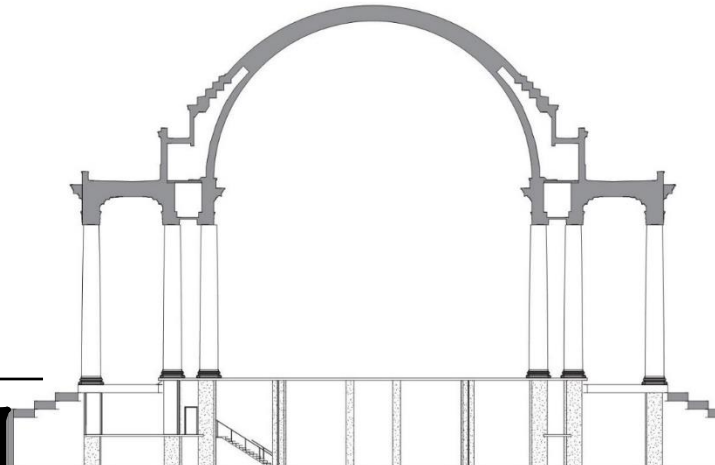
Upper Terrace Wall

Lower Terrace Wall

Circular Roadway

Chamber Level (31.58')

Upper Terrace (~21.14')



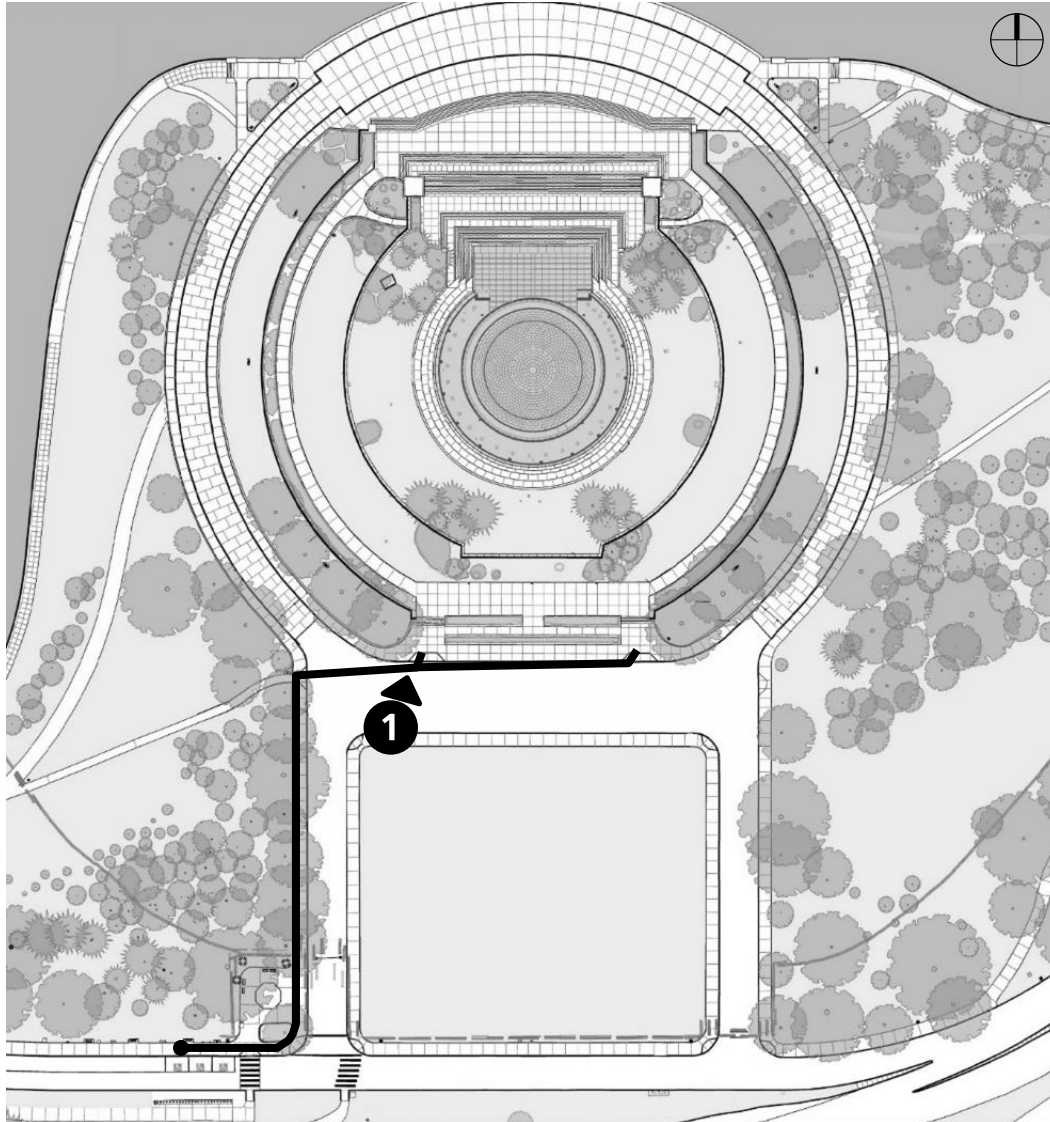
Portico Level (29.86')

**Lower Level
(8.04')**

Lower Terrace (~10.51')



Existing Site: Current Access

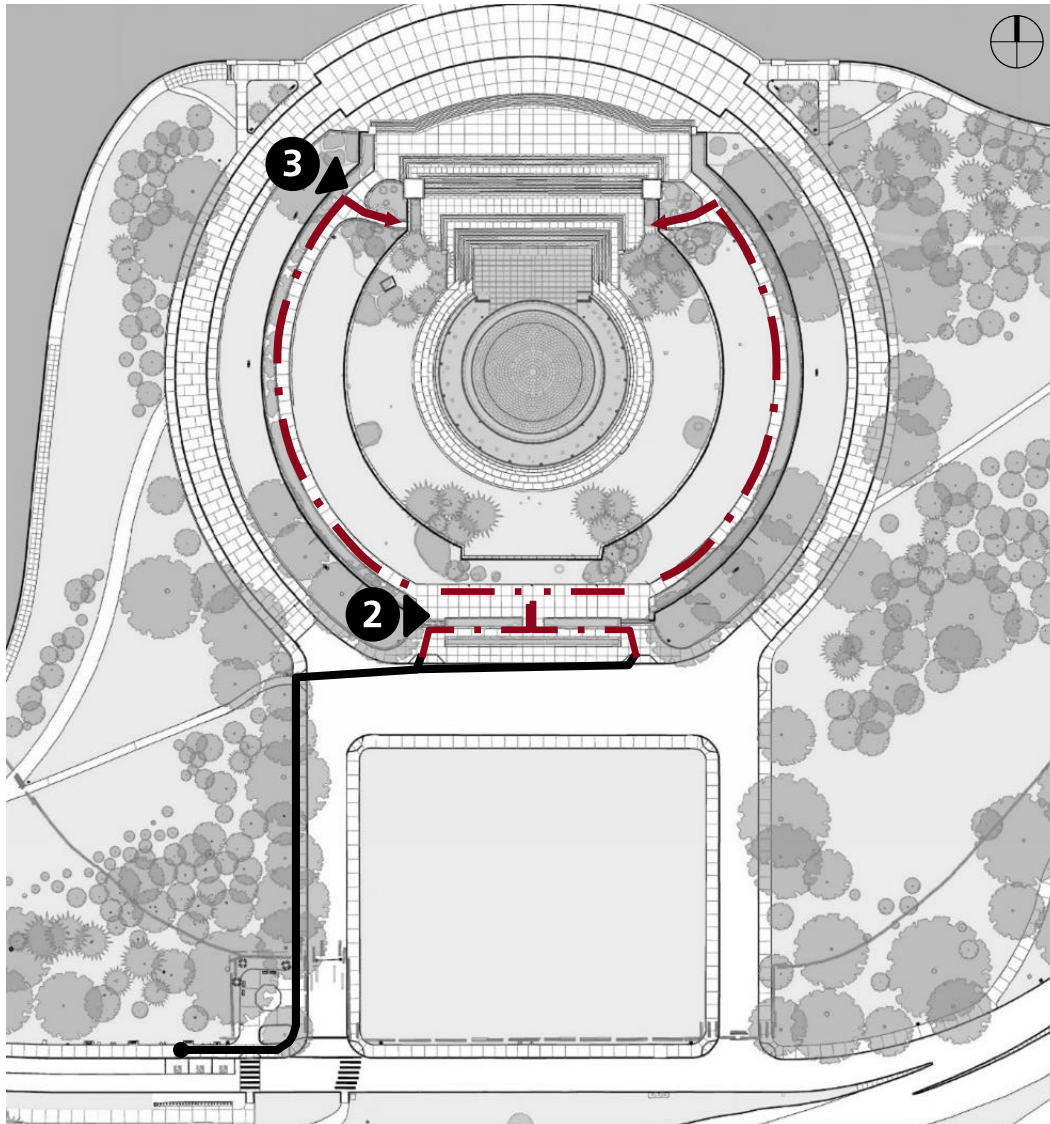


— Route from Bus Drop Off/Parking





Existing Site: Current Access

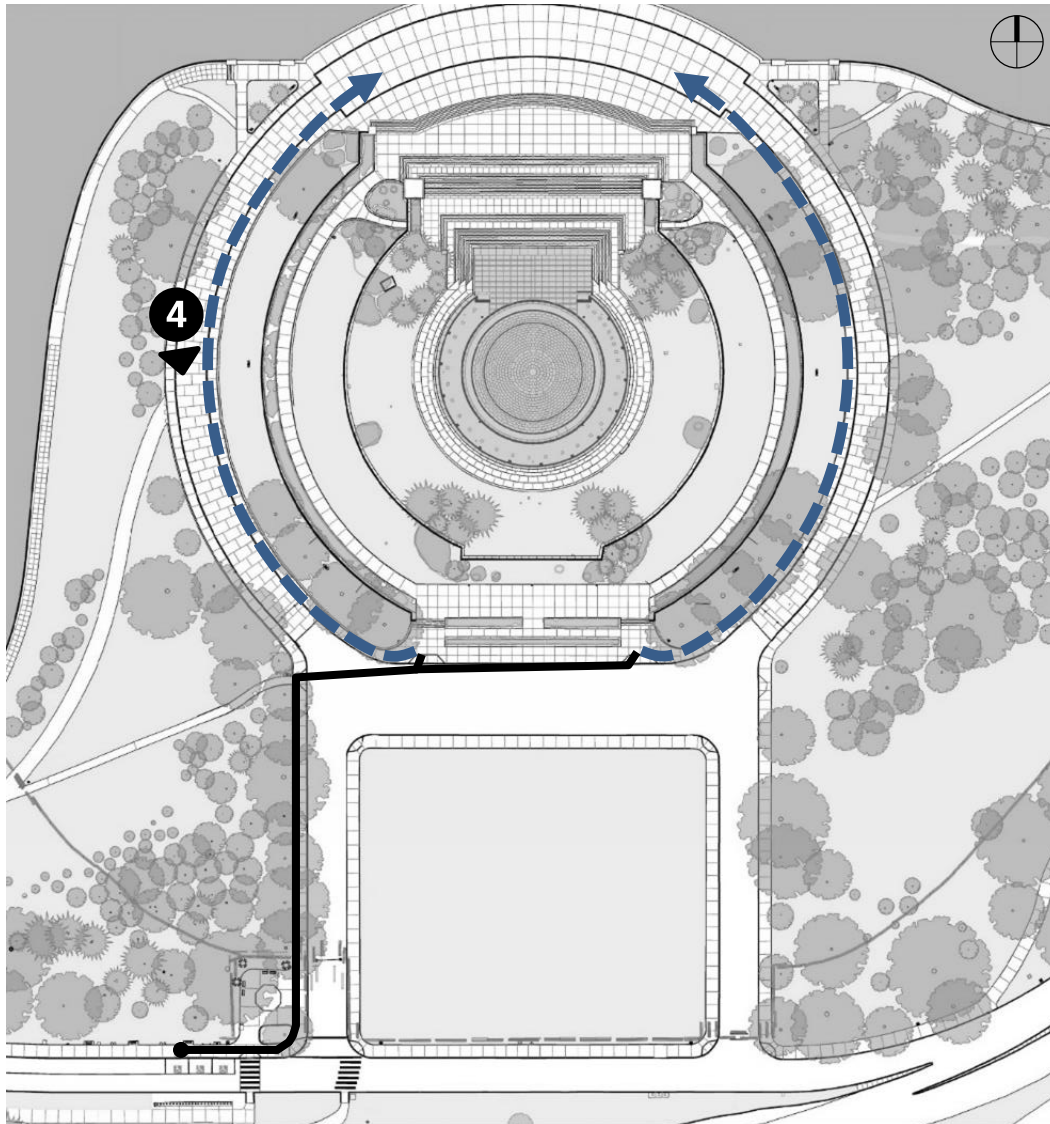


— Route from Bus Drop Off/Parking
- - - Route to Lower Terrace Level





Existing Site: Current Access

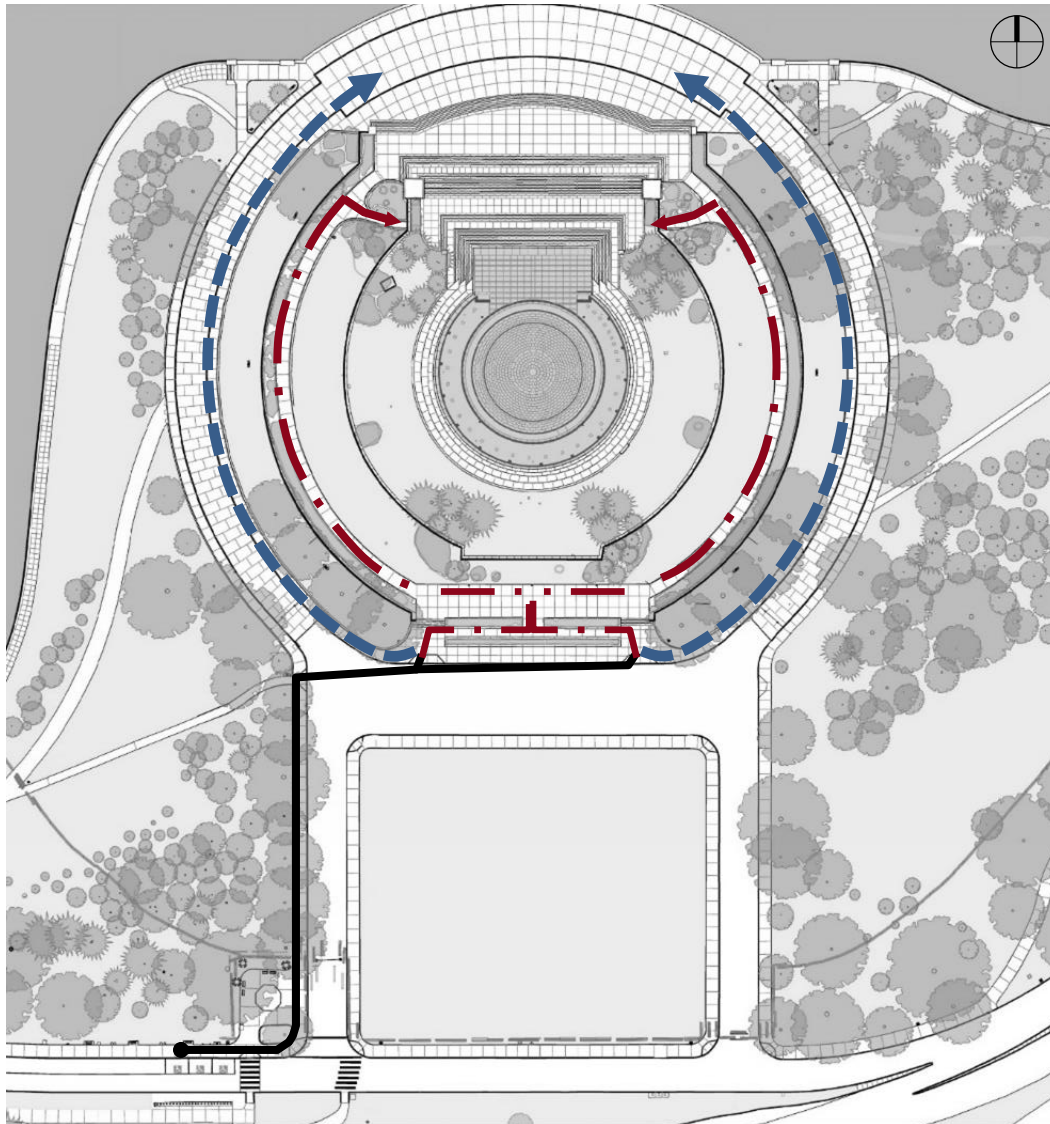


- Route from Bus Drop Off/Parking
- - - Route to Tidal Basin Plaza Level
- . - Route to Lower Terrace Level





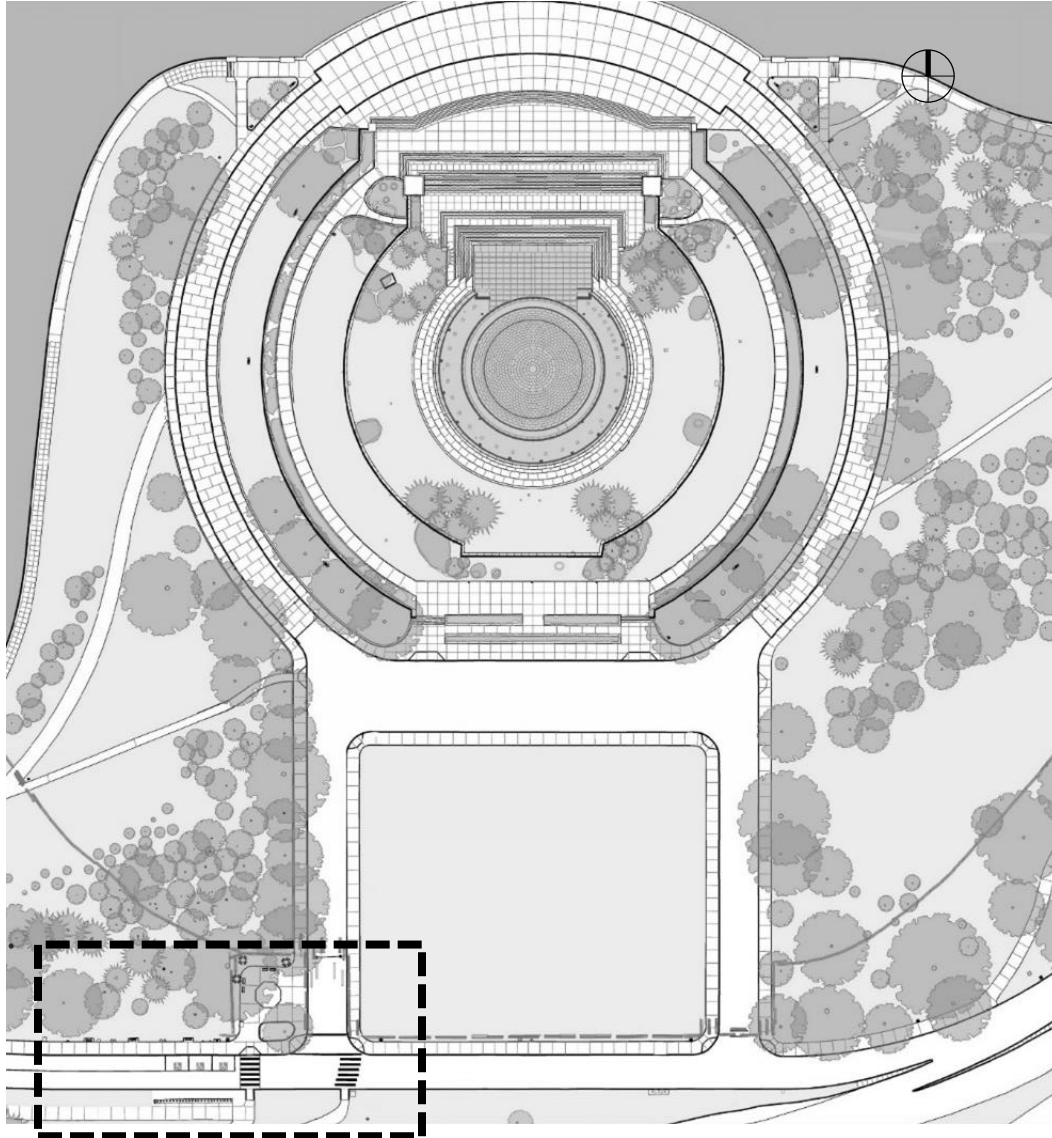
Existing Site: Current Access



- Route from Bus Drop Off/Parking
- - - Route to Tidal Basin Plaza Level
- . - Route to Lower Terrace Level

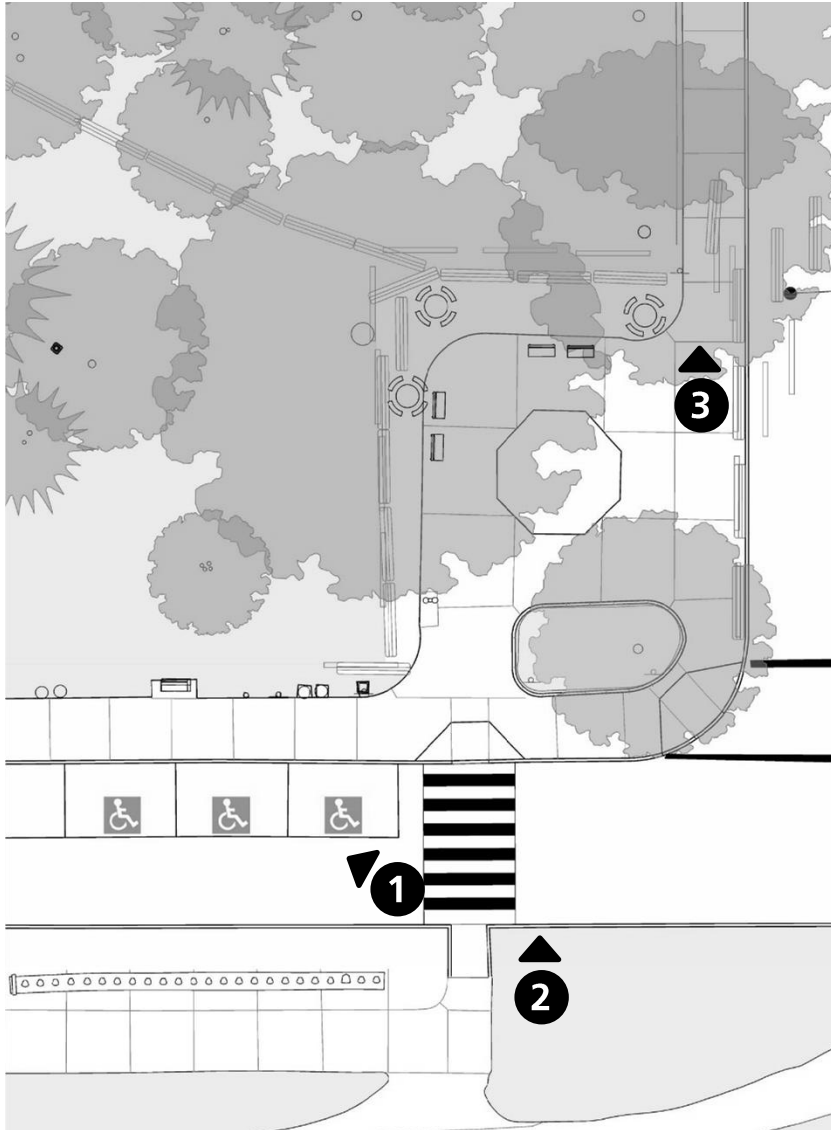


Existing Site: Current Access





Existing Site: Current Access





Proposed Actions

- Improve, modify, or create new accessible routes, including:
 - Route from Tidal Basin to chamber level
 - Route from parking/drop-off area to chamber level
 - Route to the existing concessions kiosk

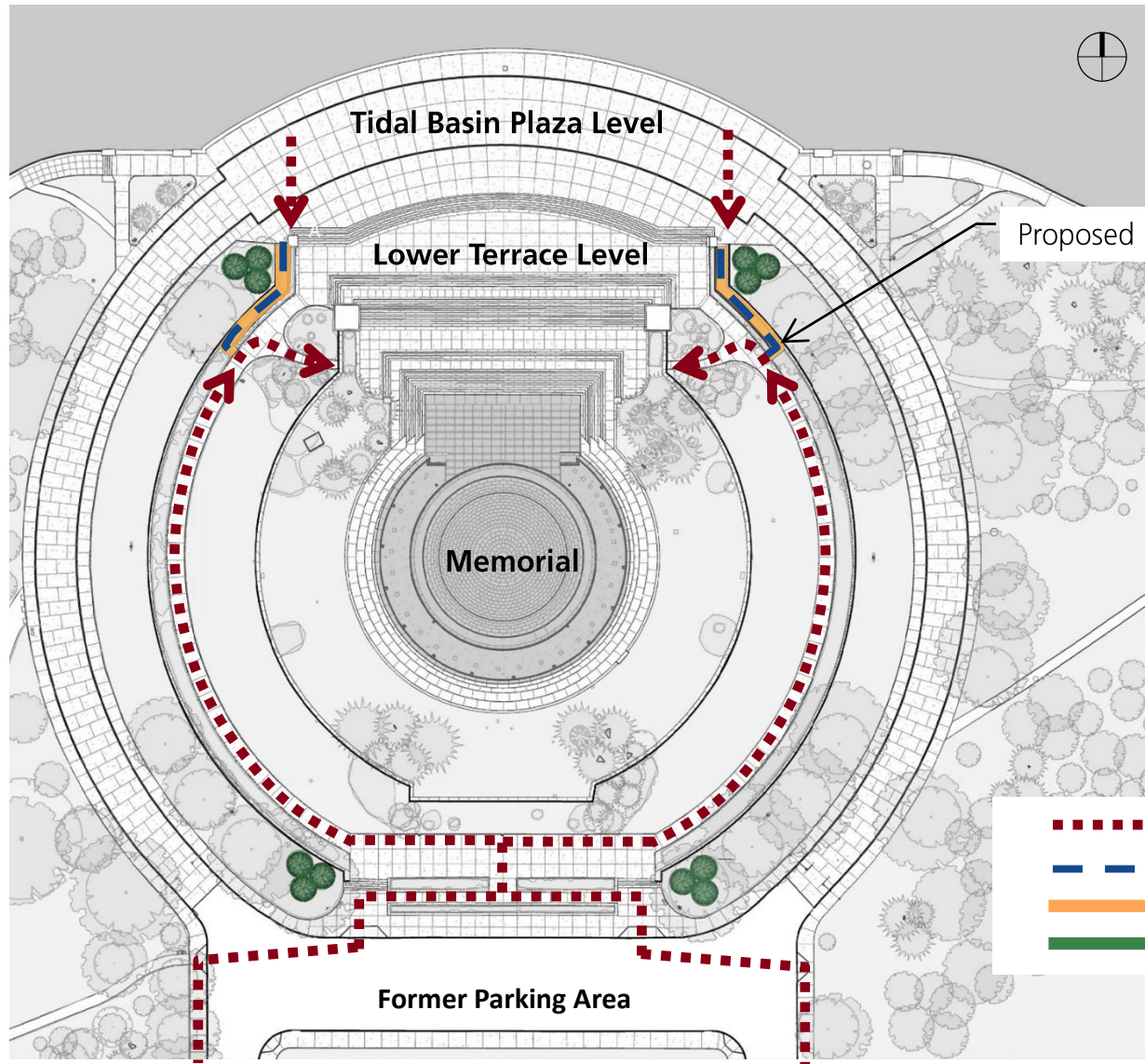


Proposed Actions

- Improve parts of the interior for maximum accessibility, including
 - Interpretive exhibits
 - Physical elements



Option 1: Sloped Walkway within Existing Planter

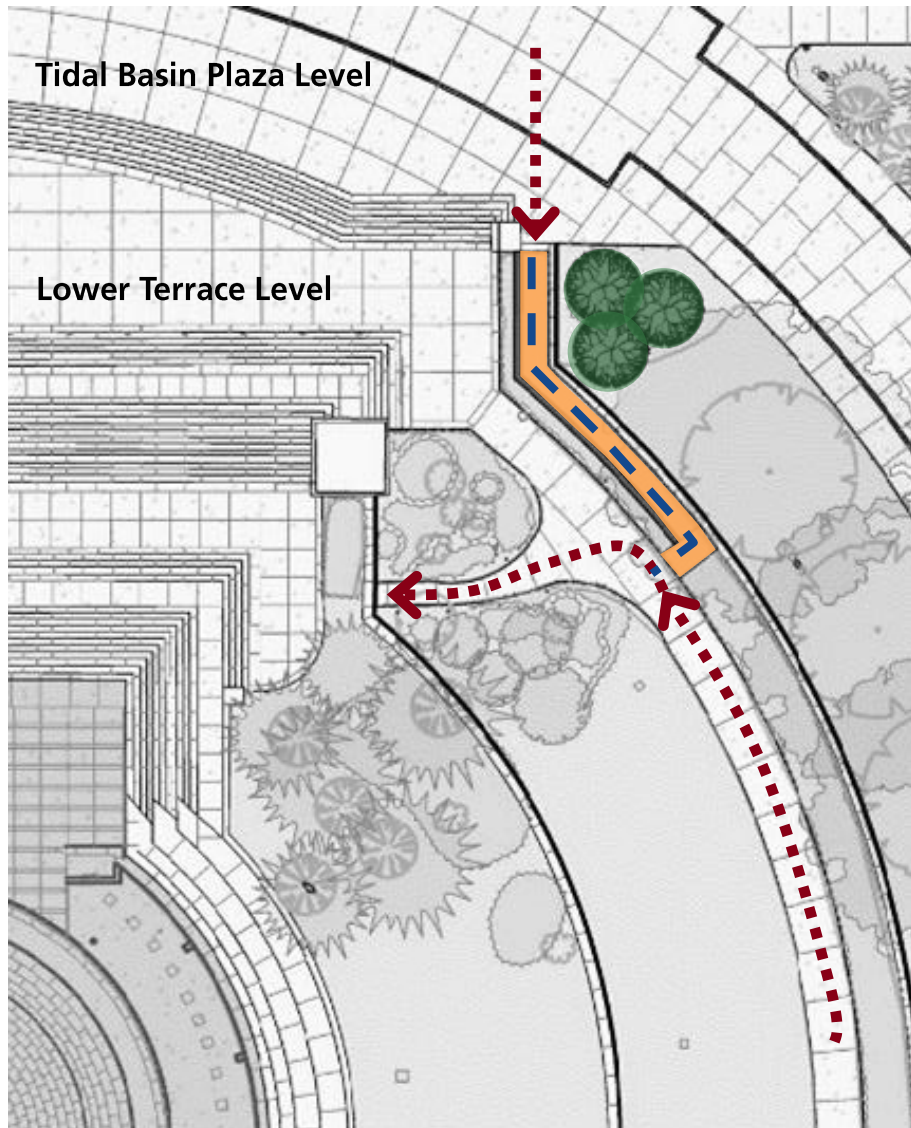


Proposed 5% Sloped Walkway

- Existing Route
- Proposed Route
- Proposed Walkway
- Proposed Landscape Plantings



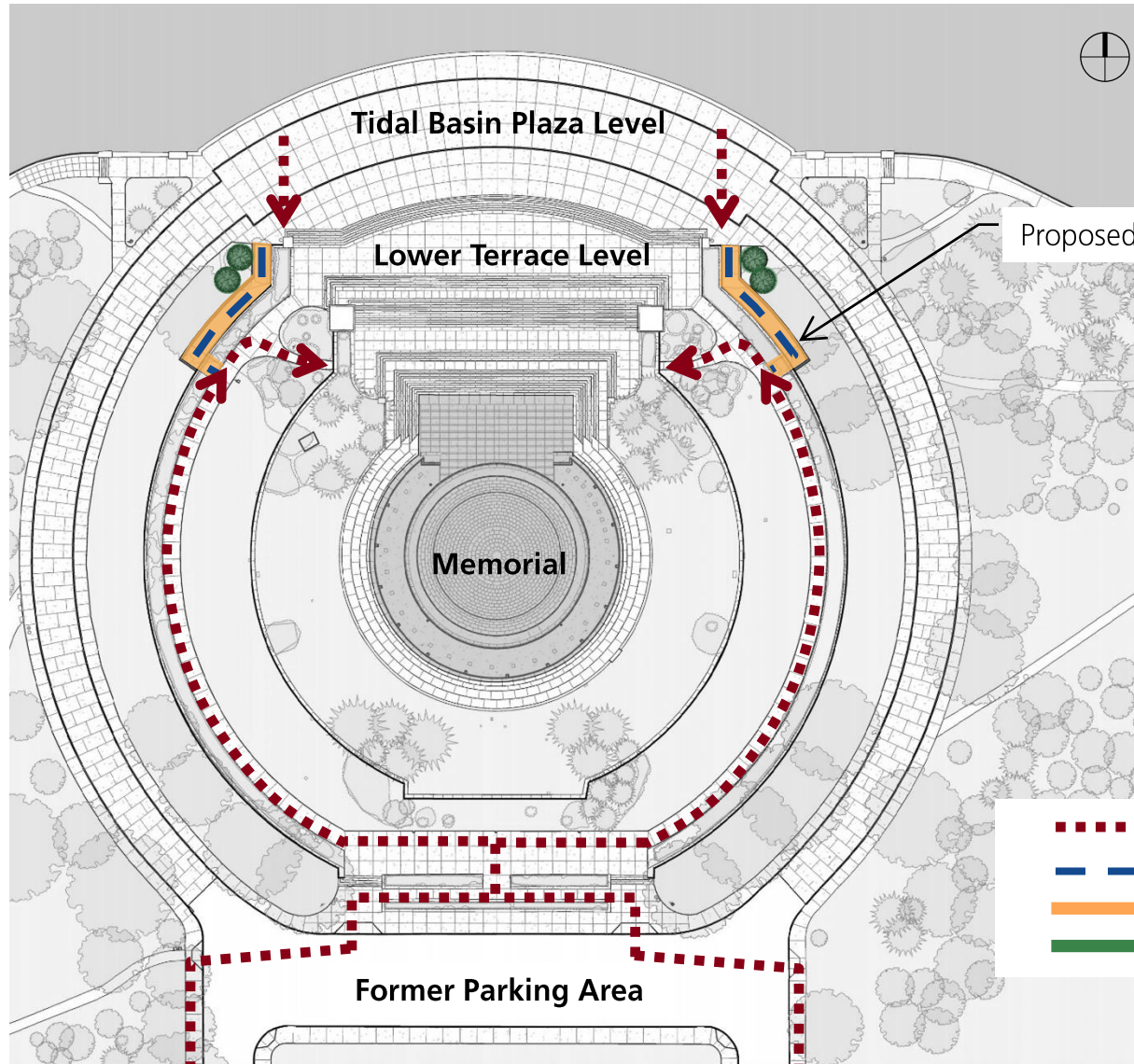
Option 1: Sloped Walkway within Existing Planter



- Existing Route
- Proposed Route
- Proposed Walkway
- Proposed Landscape Plantings



Option 2: North Sloped Walkway with Guardrail

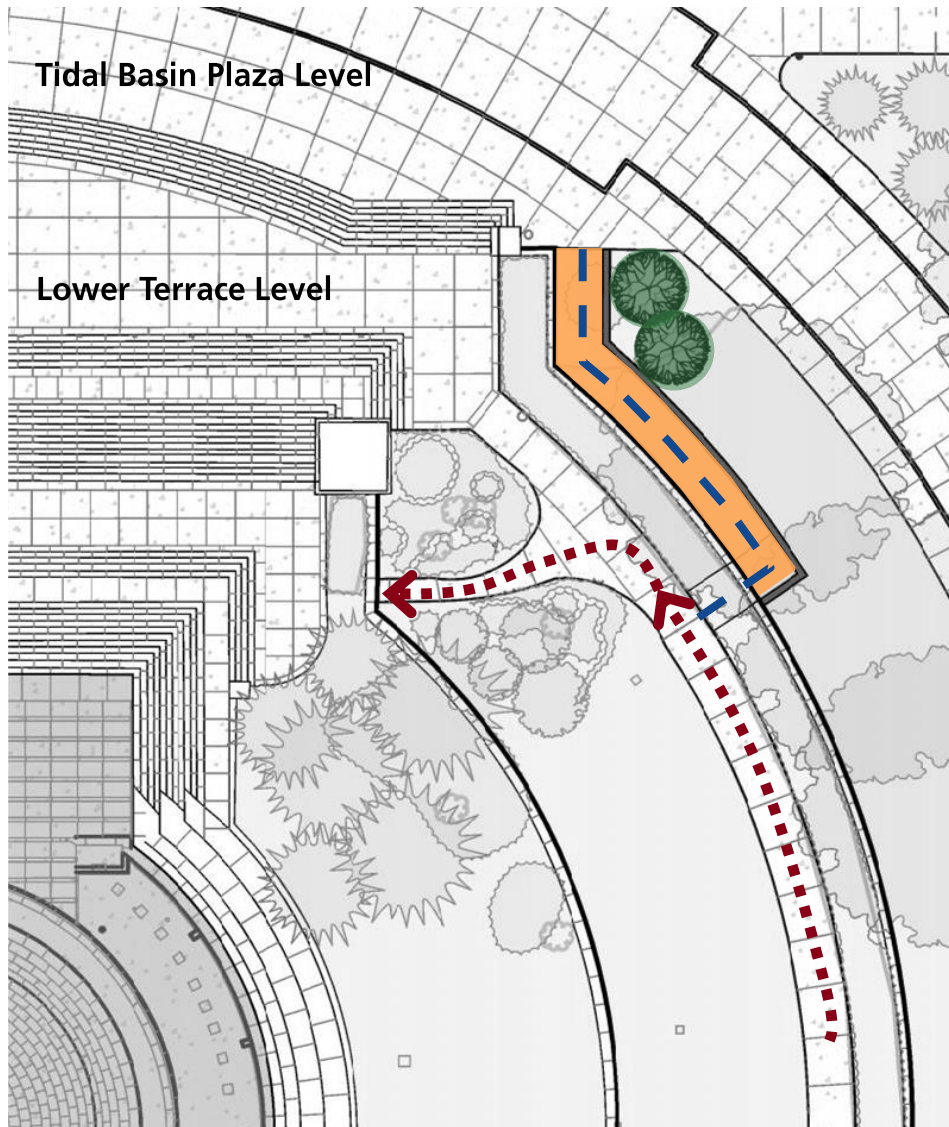


Proposed 5% Sloped Walkway

- Existing Route
- Proposed Route
- Proposed Walkway
- Proposed Landscape Plantings



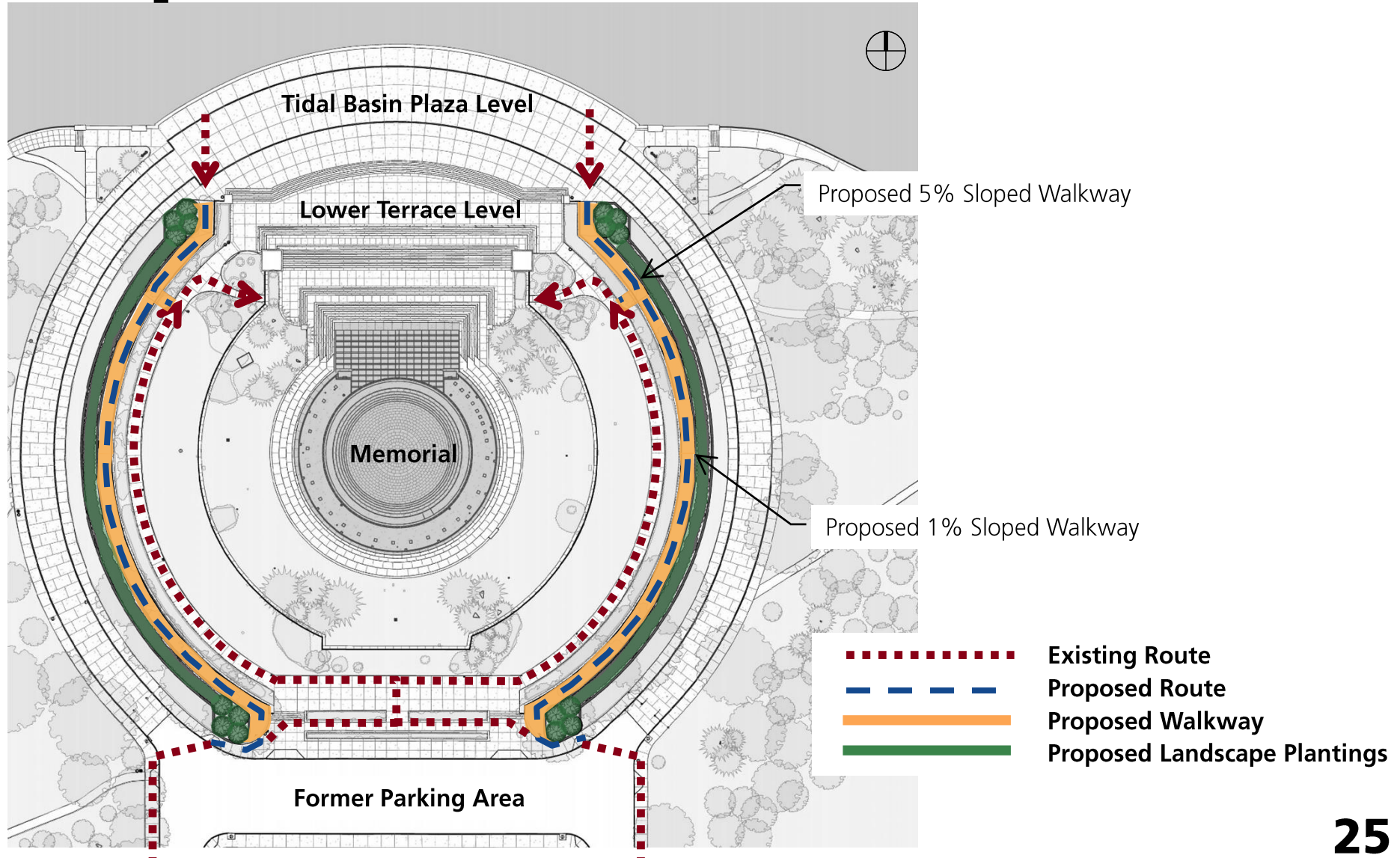
Option 2: North Sloped Walkway with Guardrail



- Existing Route
- Proposed Route
- Proposed Walkway
- Proposed Landscape Plantings

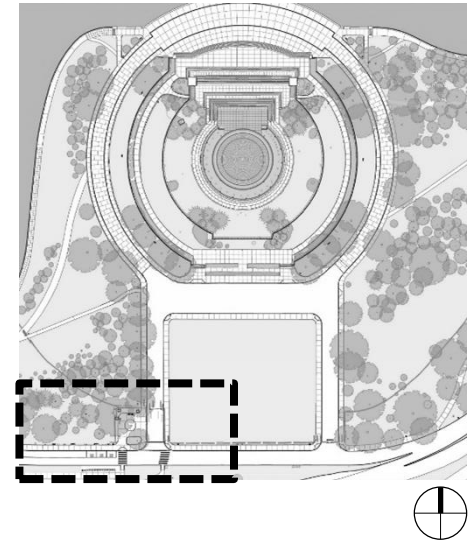
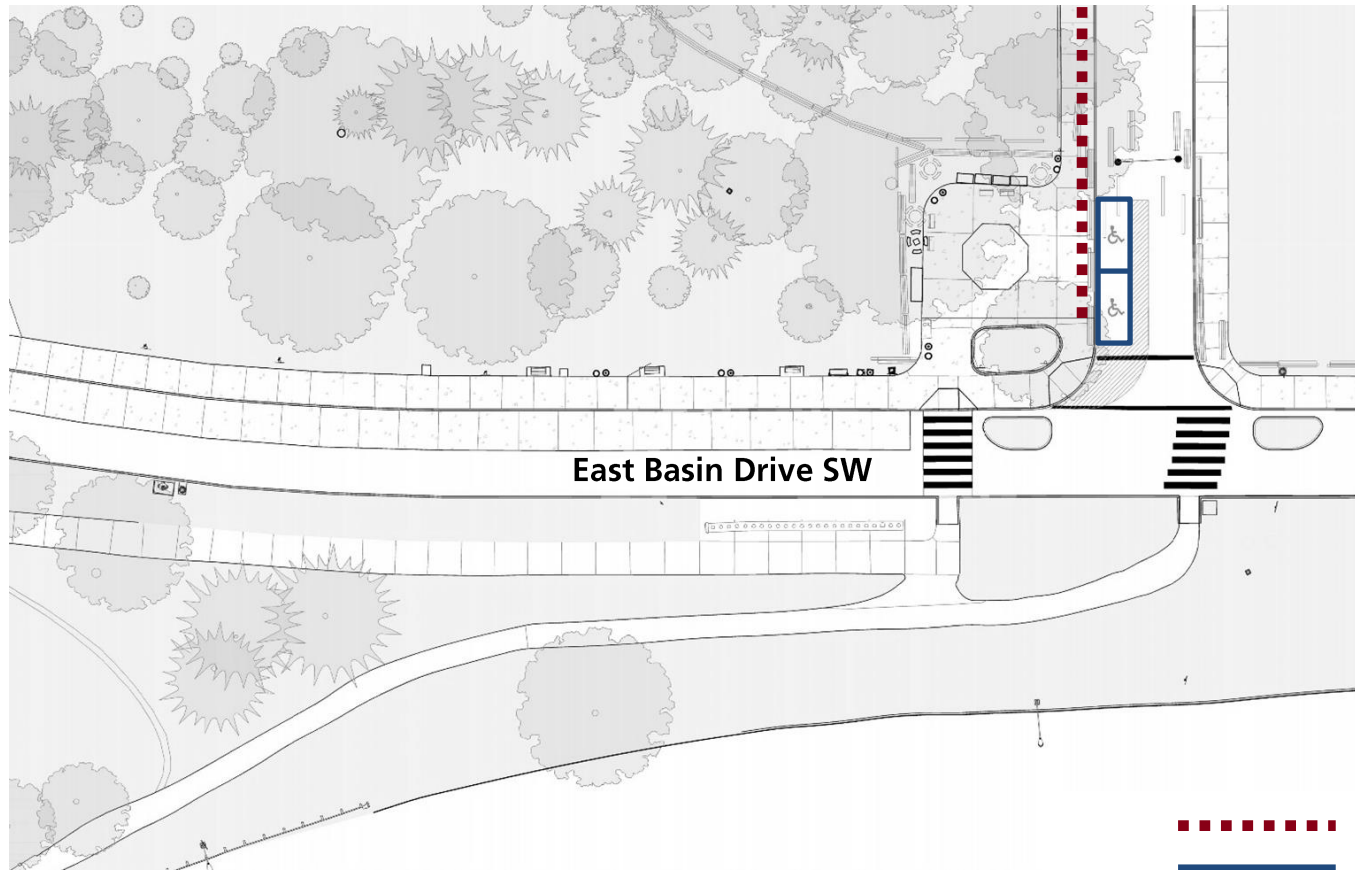


Option 3: Continuous Sloped Walkway





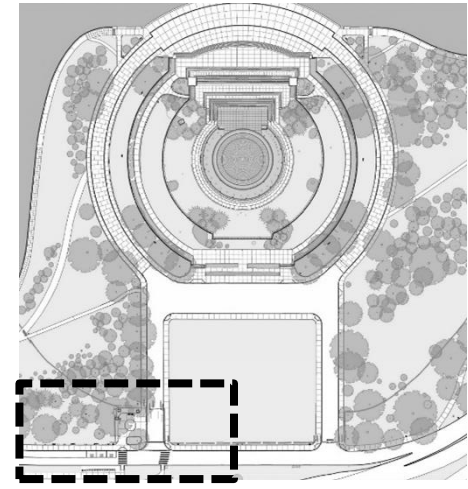
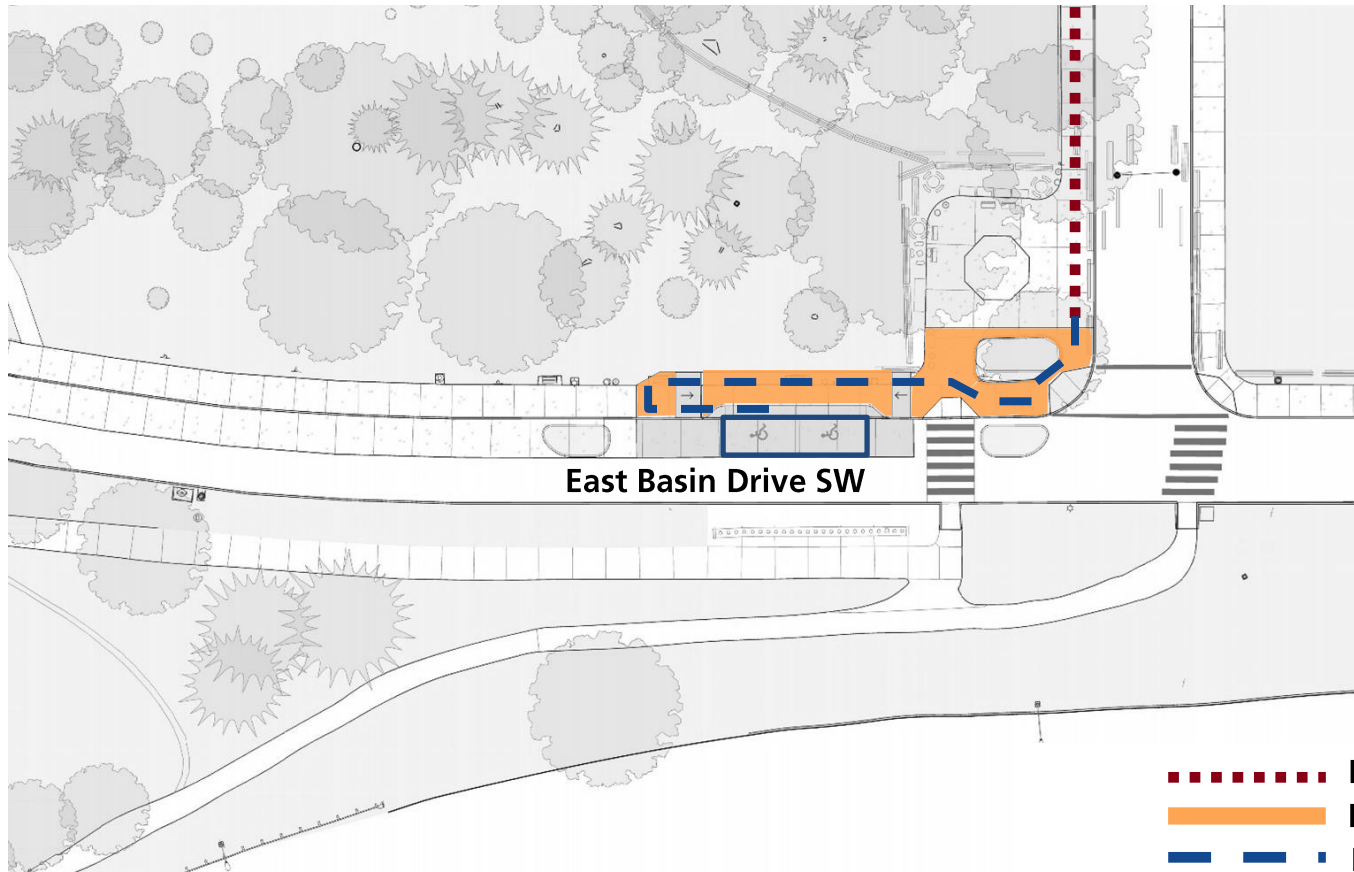
Option 4.1: Temporary Parallel Parking



- Existing Route
- Proposed Accessible Parking



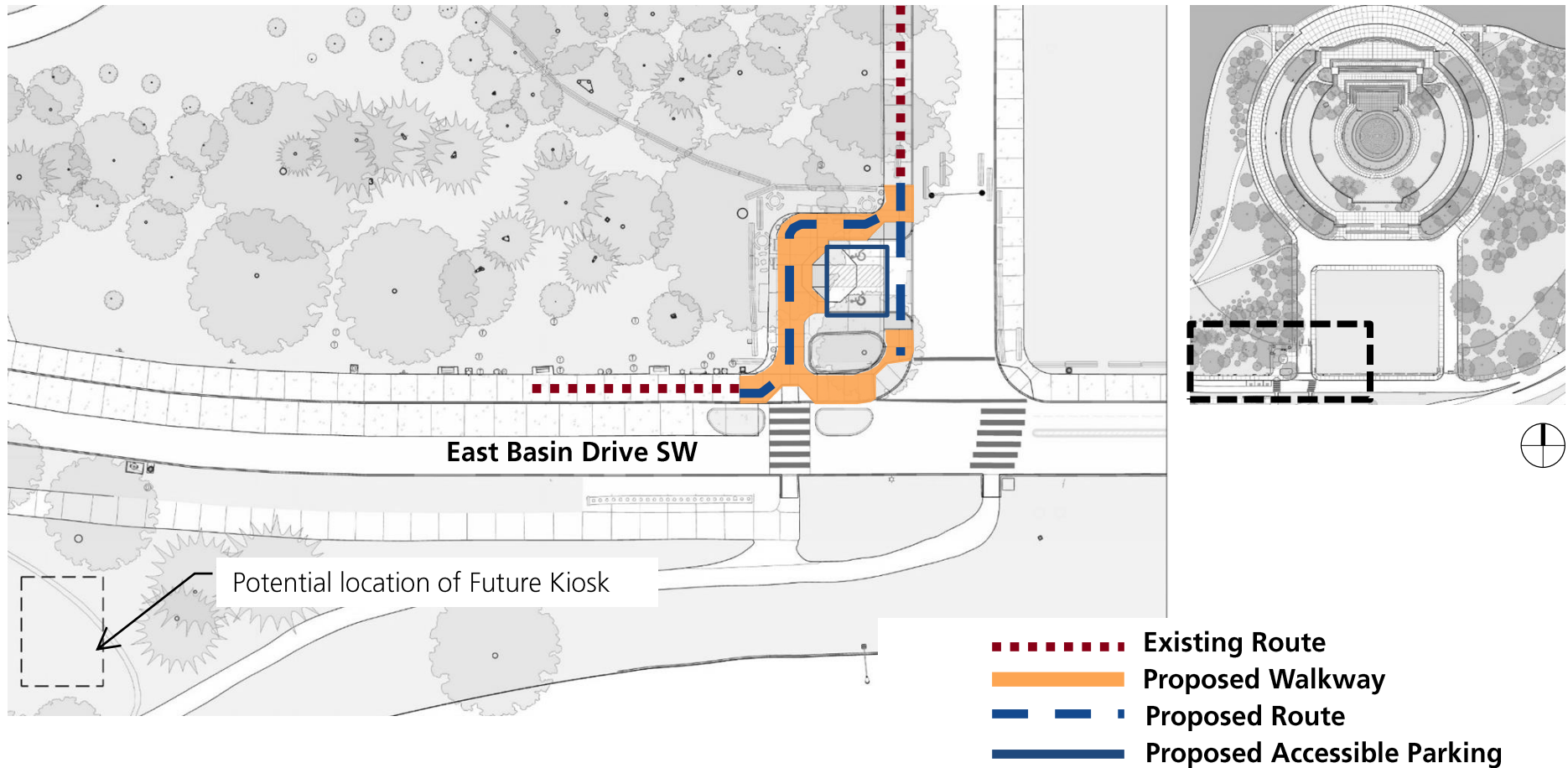
Option 4.2: Accessible Parking in Existing Location



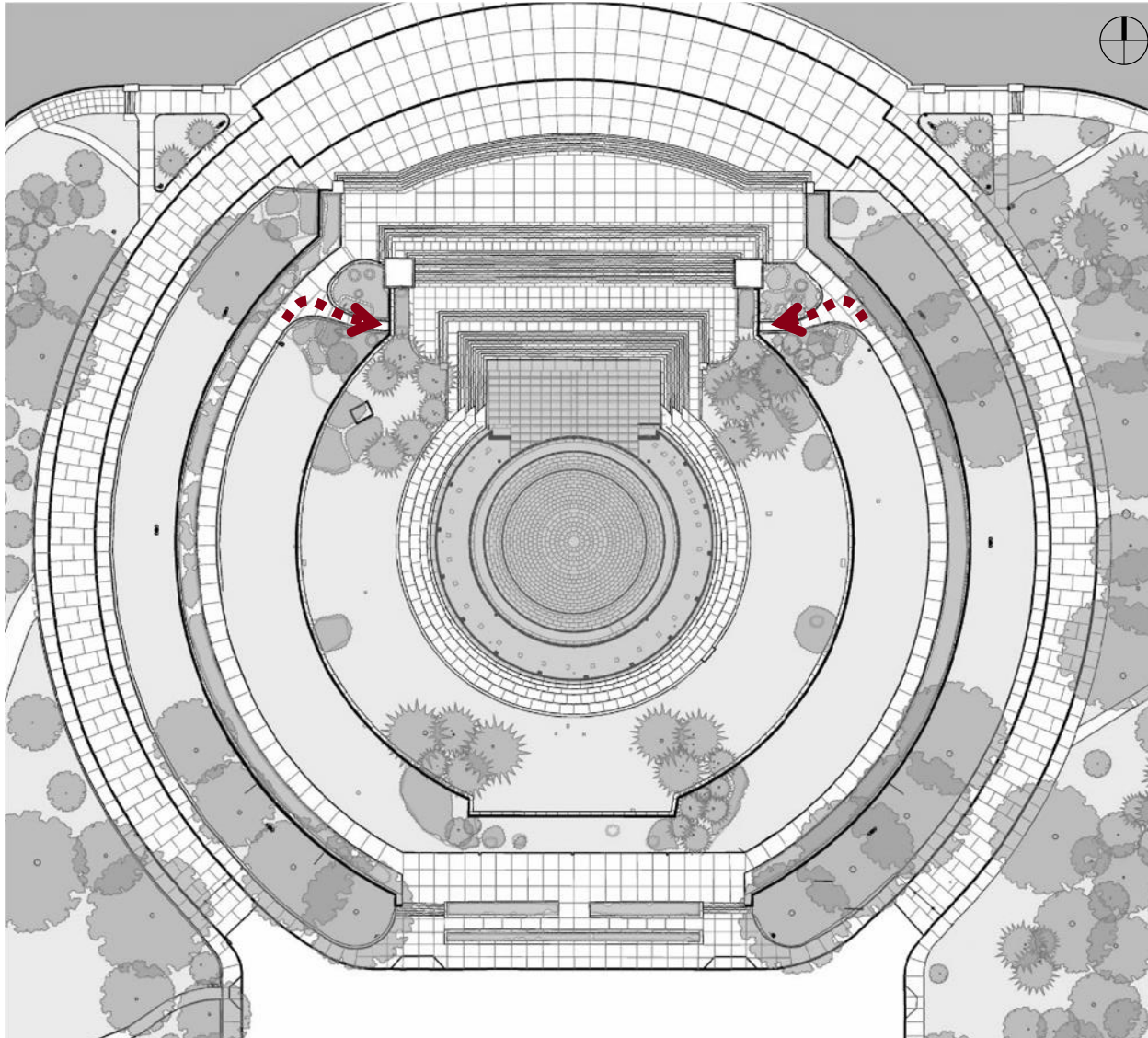
- Existing Route
- Proposed Walkway
- Proposed Route
- Proposed Accessible Parking



Option 4.3: Accessible Parking at Kiosk Location



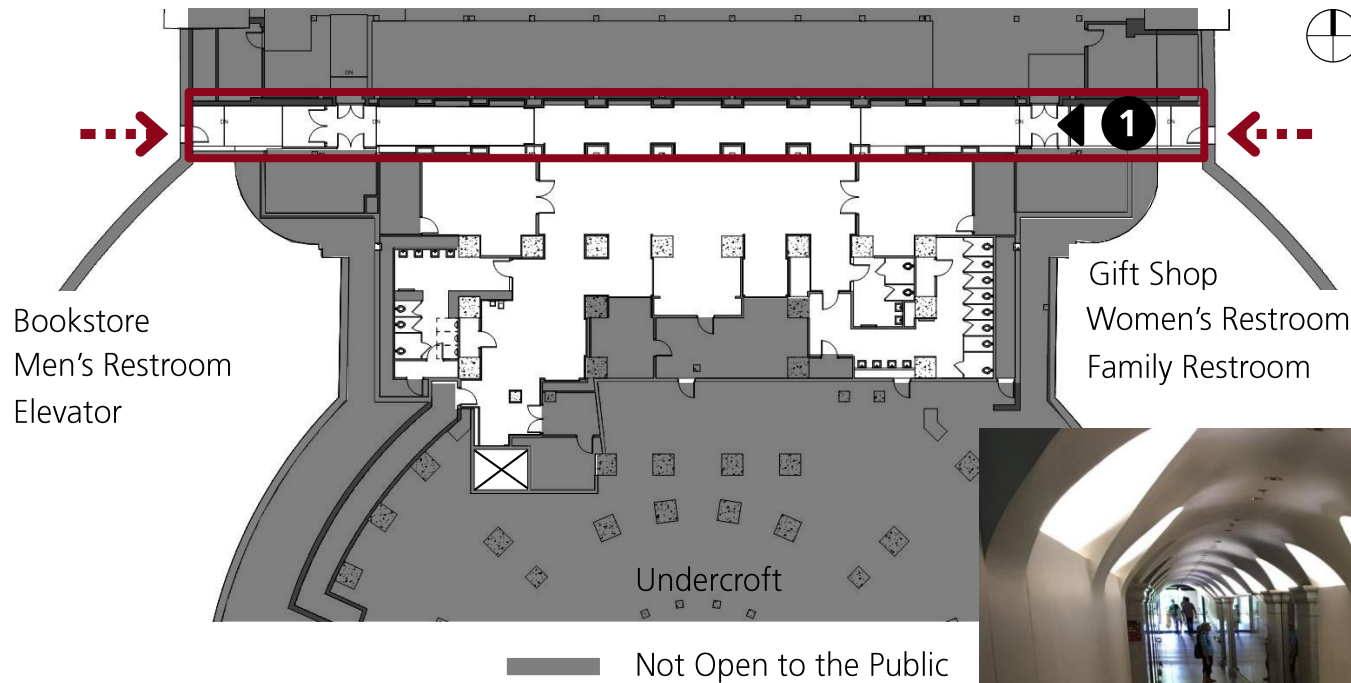
Interior Work





Lower Level:

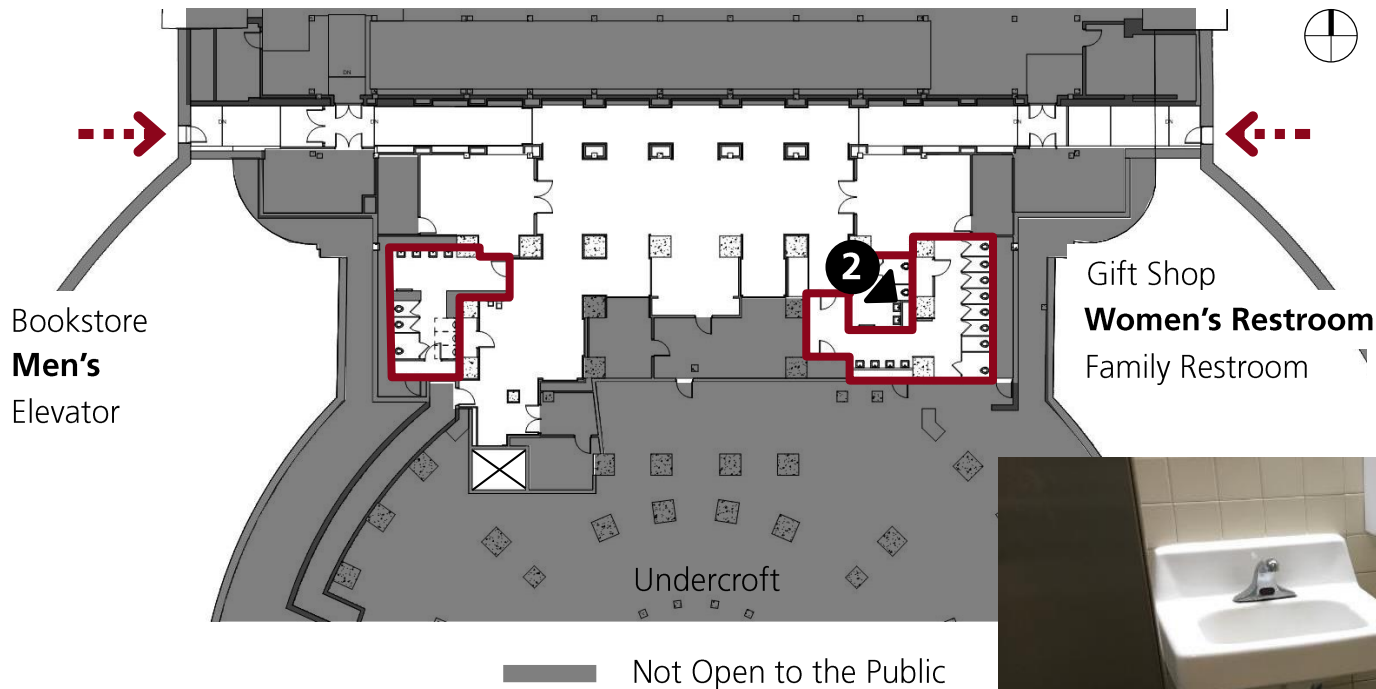
Areas Requiring Improvements for Accessibility





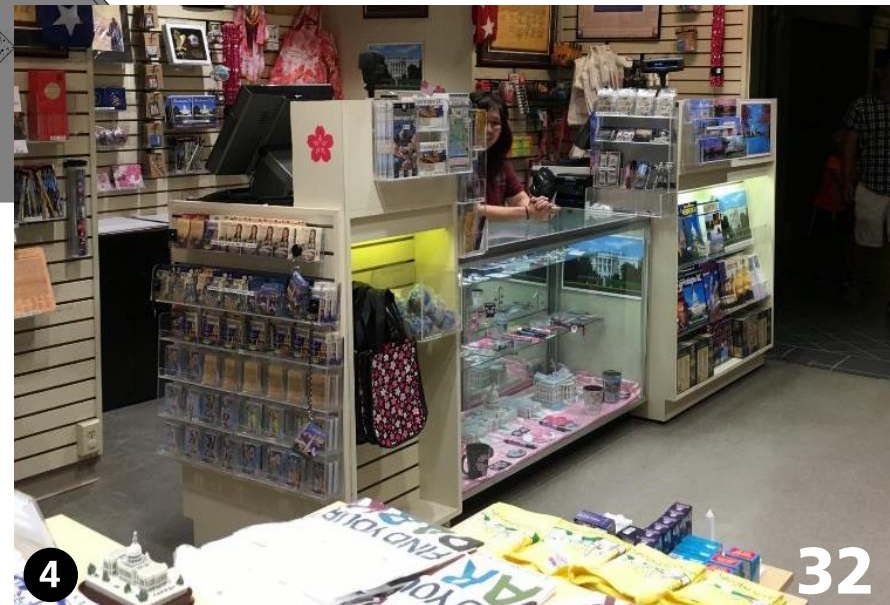
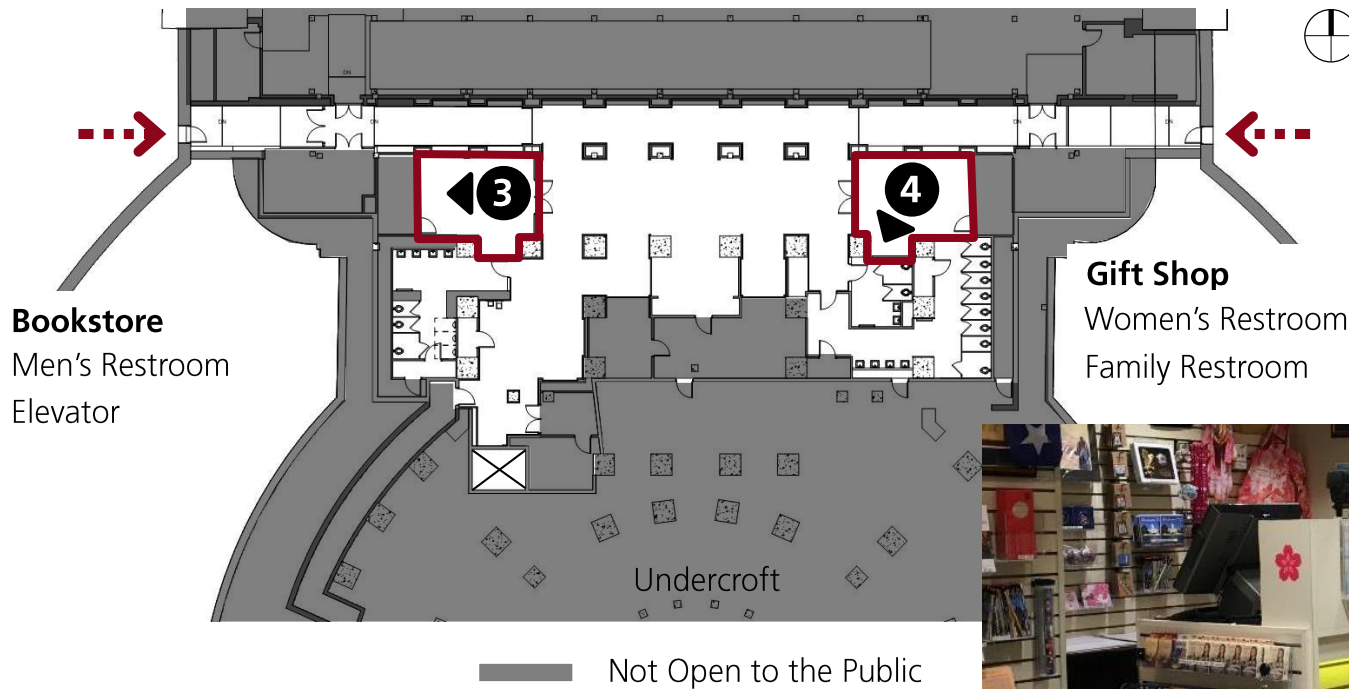
Lower Level:

Areas Requiring Improvements for Accessibility



Lower Level:

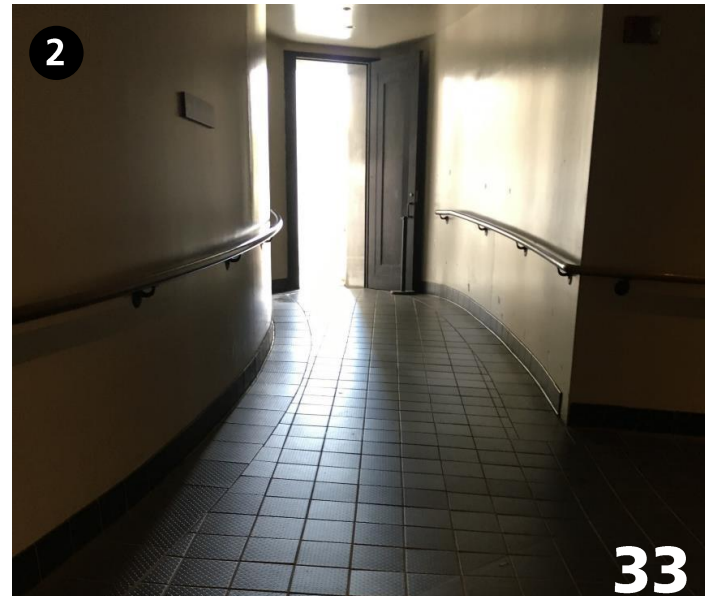
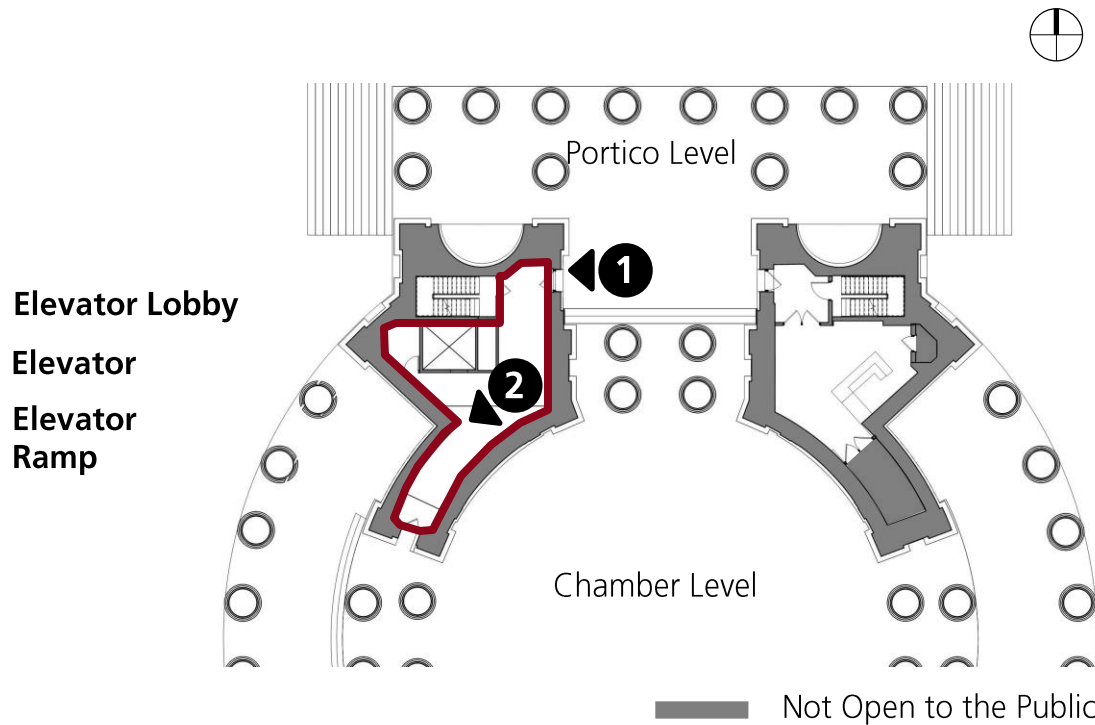
Areas Requiring Improvements for Accessibility





Portico Level:

Areas Requiring Improvements for Accessibility





Lower Level/Portico Level:

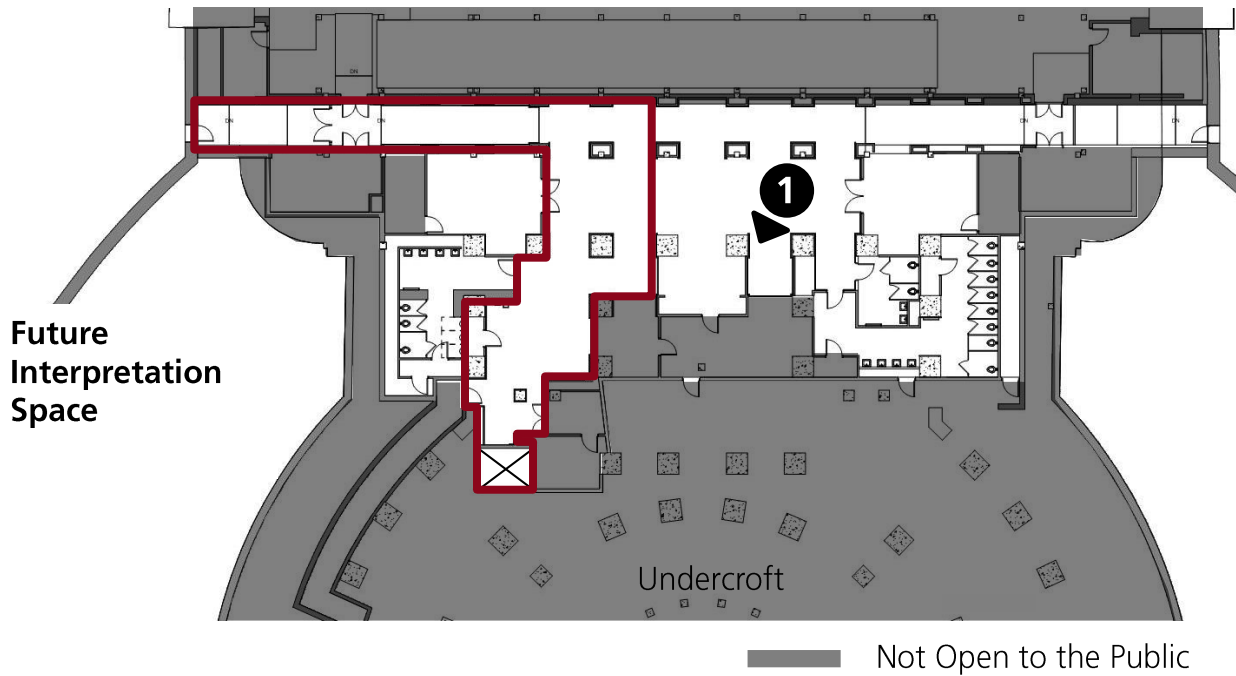
Possible Updates to Physical Components:

- Provide lowered countertops at the bookstore and giftshop.
- Reduce steepness of the ramp from the Portico Level to the Chamber Level
- Extended handrails along ramps
- Adjust location of fixtures with Restrooms



Lower Level: Interpretation

Areas Requiring Improvements for Accessibility

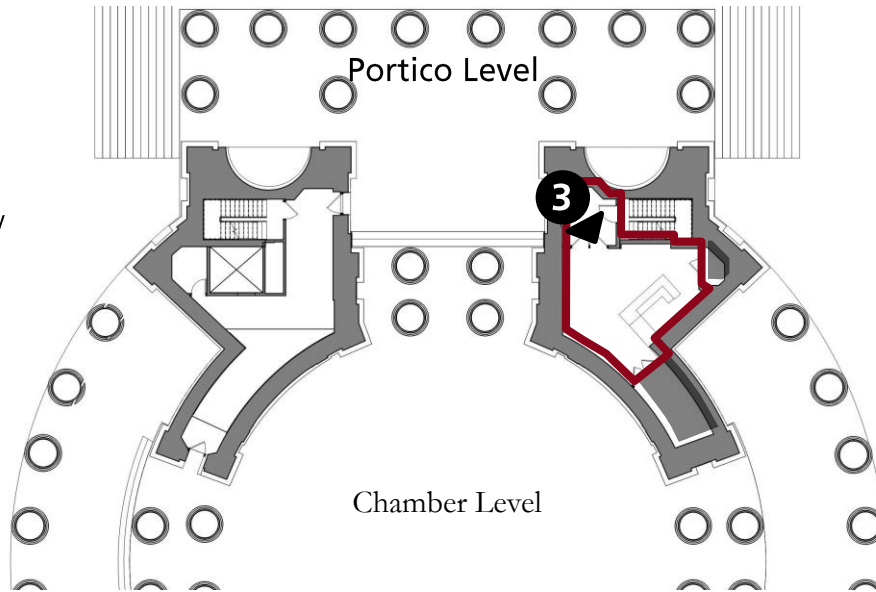


Portico Level:

Areas Requiring Improvements for Accessibility

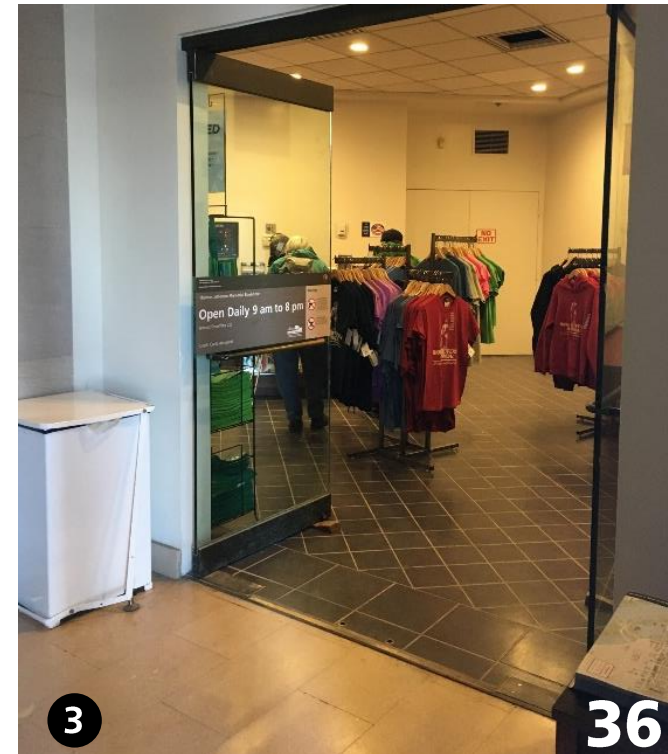


Elevator Lobby
Elevator
Elevator Ramp



— Not Open to the Public

Contact Station



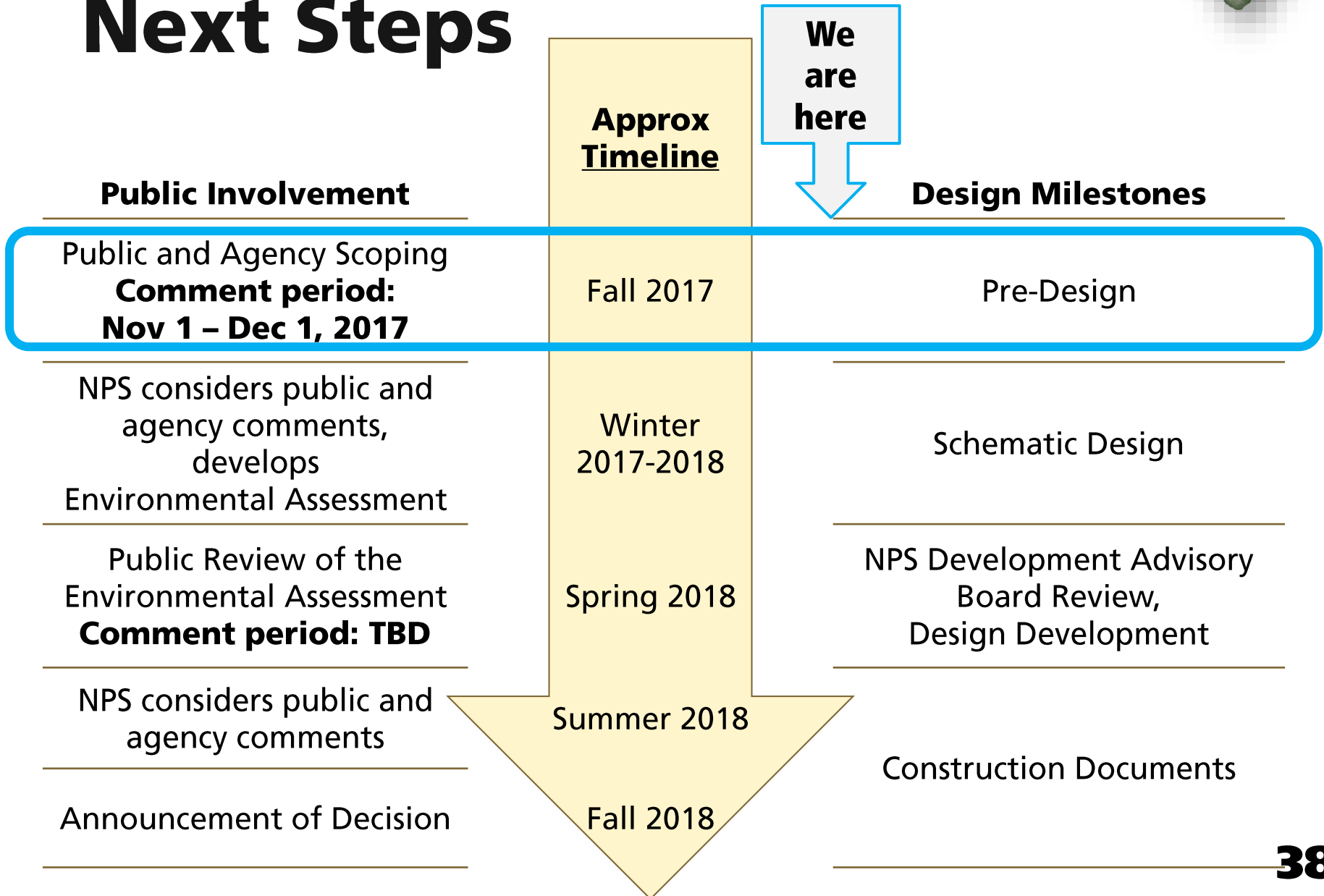


Interpretive Updates

- Exhibits to focus on the Memorial, the statue, and the surrounding landscape
- Move interpretation to Contact station for connection to Chamber Level
- Audio describe and provide braille for all interpretive and Memorial content.
- Create a desirable experience, equivalent of ascending the stairs of the Memorial in (and around) elevator



Next Steps





How to Comment

- Participate in Question and Answer session now
- Provide online at **go.nps.gov/JeffersonAccessibility**
- Comment forms
- Mail (instructions on comment forms)

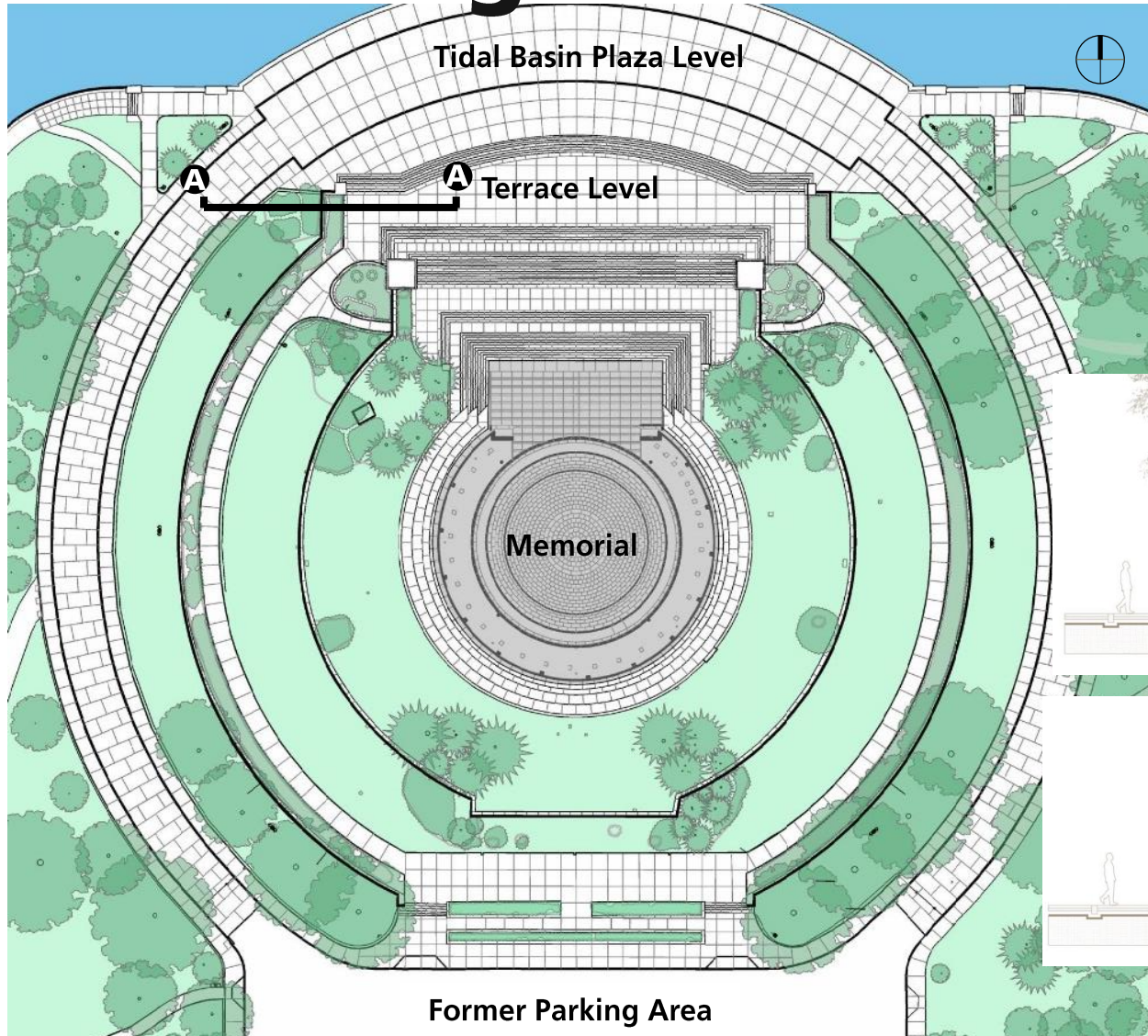


Questions? Comments?

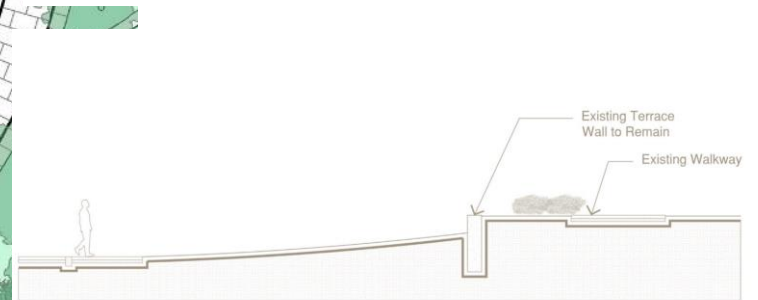
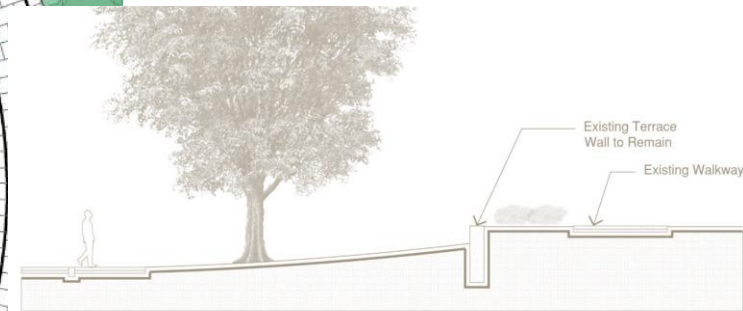
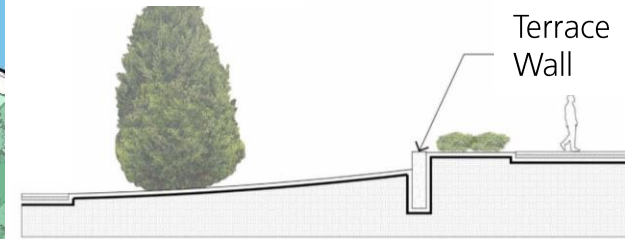




Existing Site

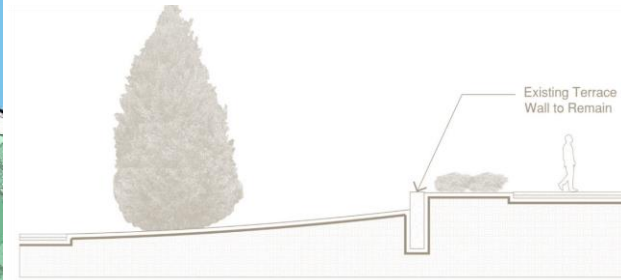
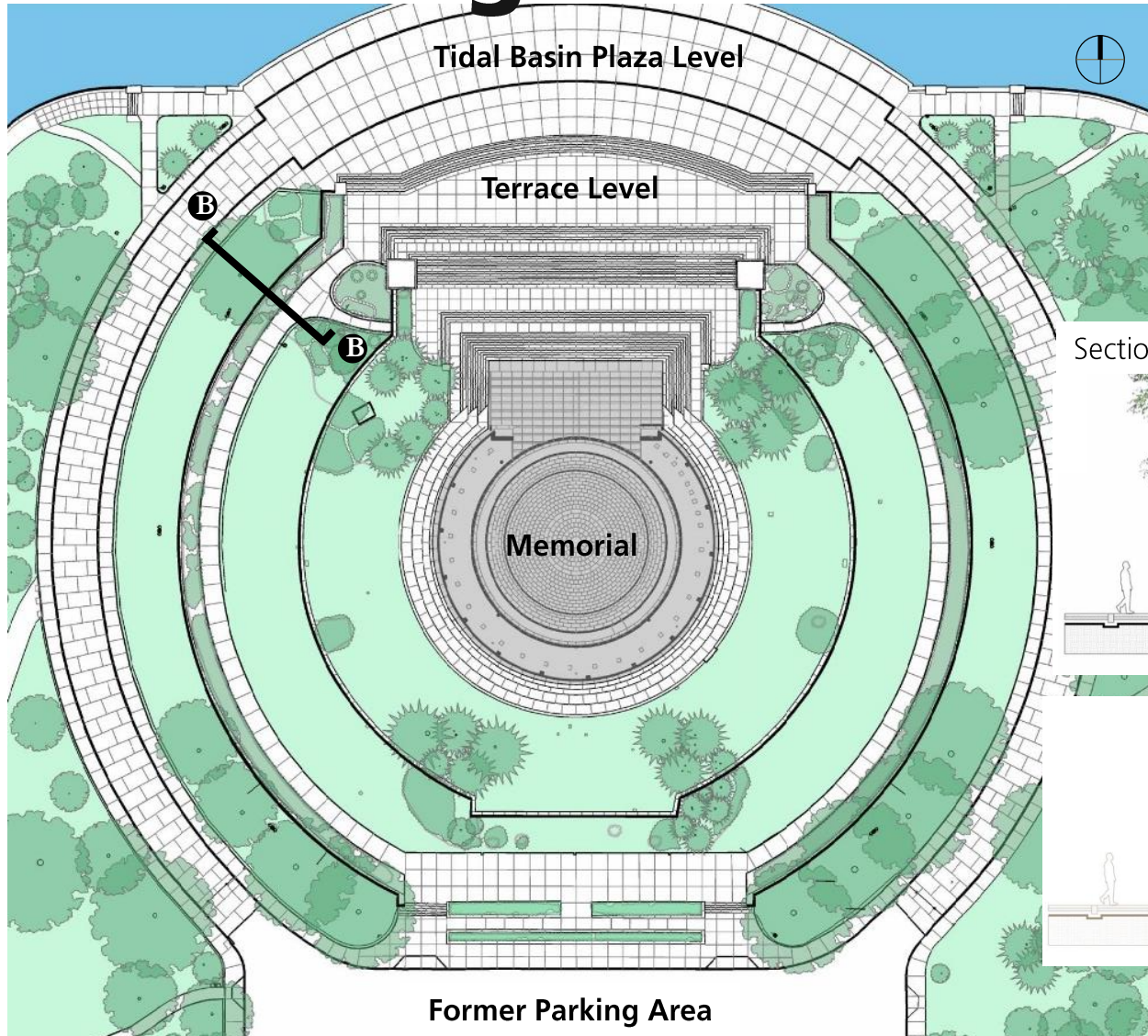


Section A-A

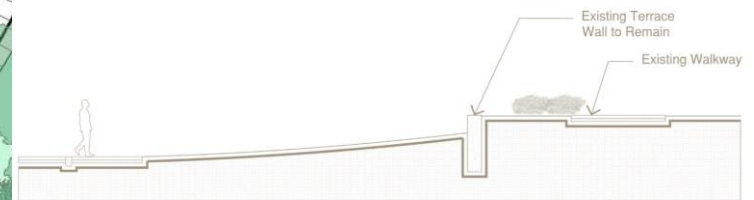
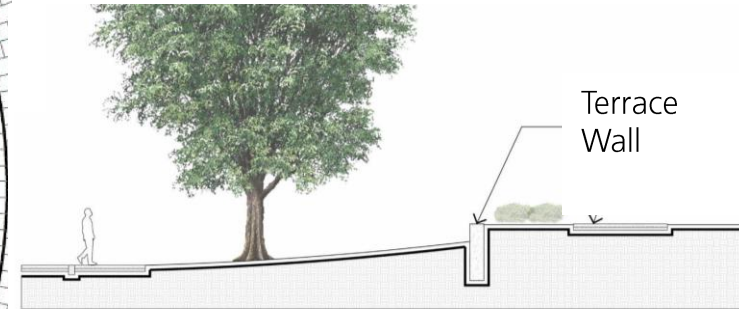




Existing Site

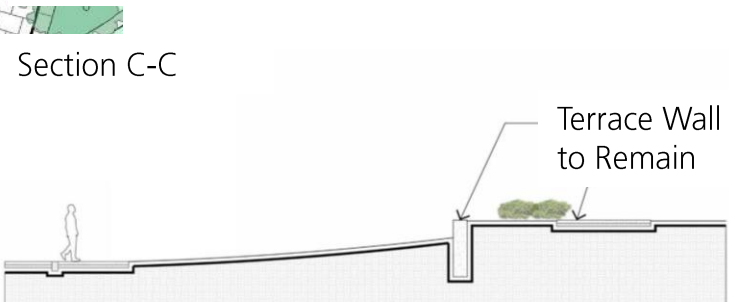
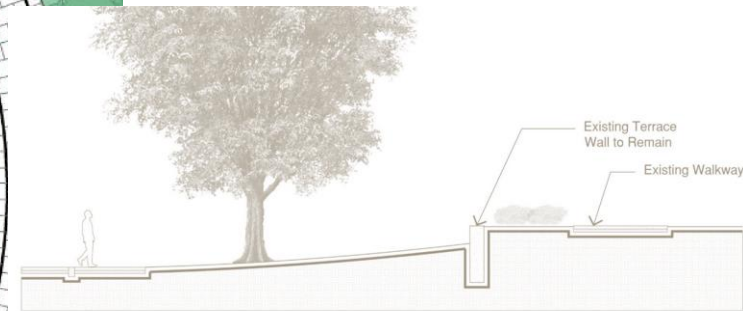
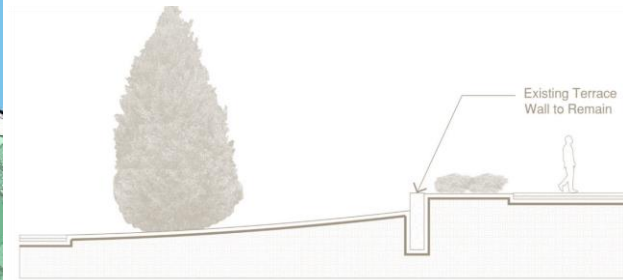
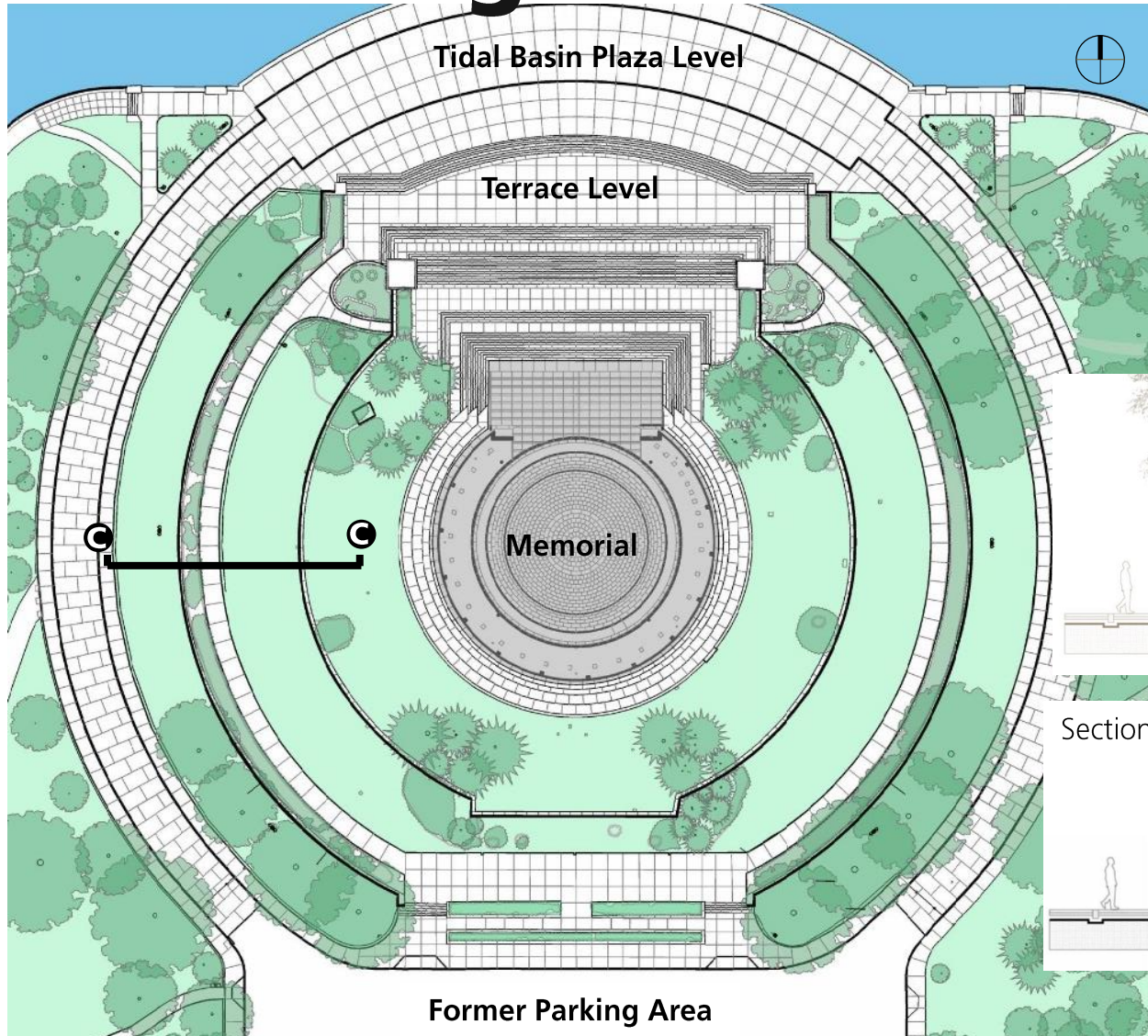


Section B-B





Existing Site



Existing Site

