

Thomas Jefferson Memorial Targeted Accessibility Improvement Program (TAIP)

National Park Service
US Department of the Interior



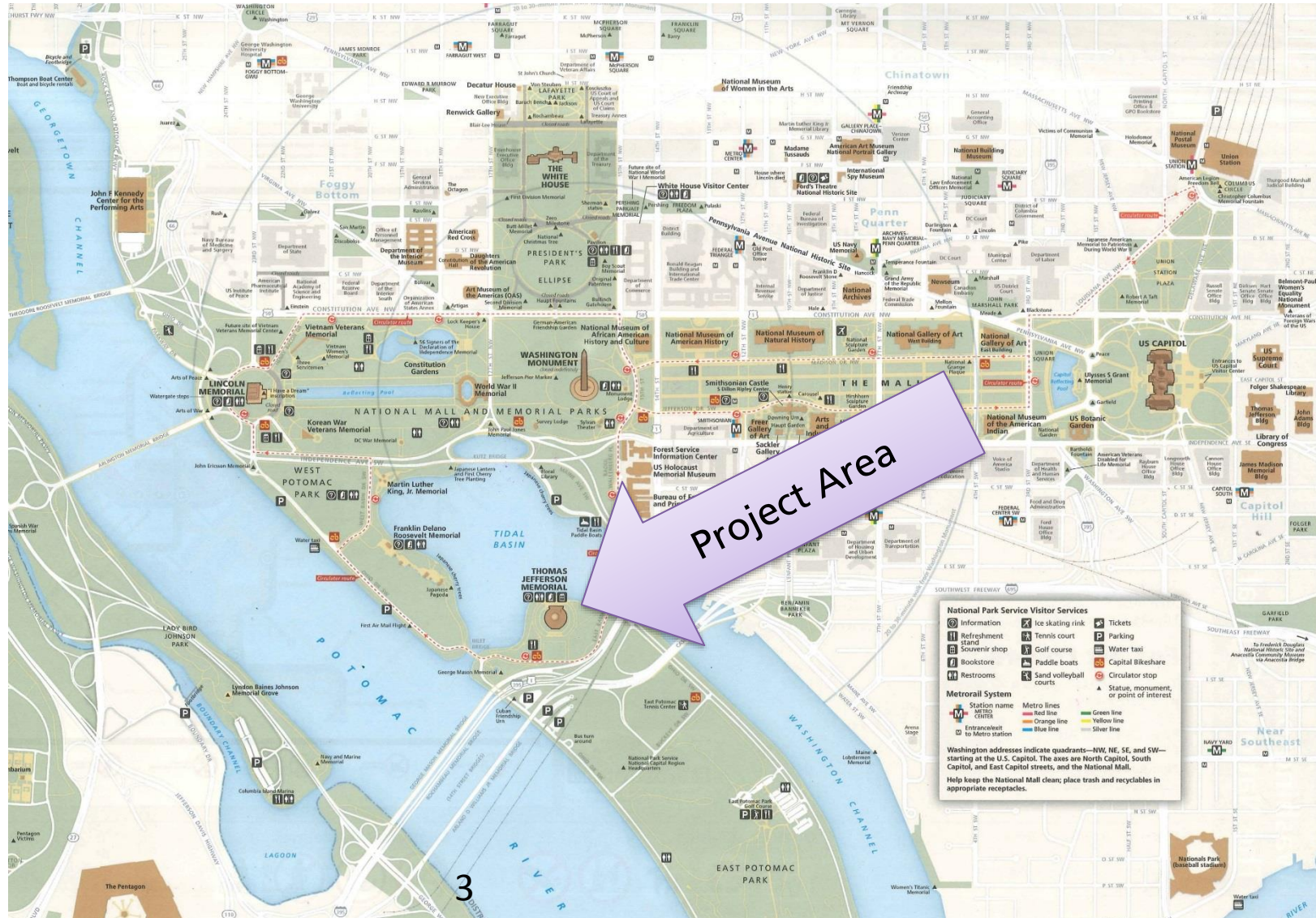


Purpose of Today's Meeting

- Initiate consultation with consulting parties under NEPA and NHPA Section 106
- Present information about the location, design, and siting of project elements
- Identify historic resources and key issues and landscape level concerns
- Identify alternatives (options) and discuss potential effects of the undertaking



Project Location





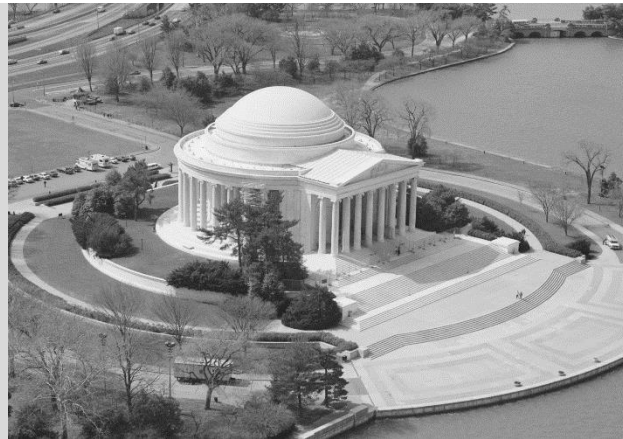
Project Location





Site History

- Commissioned by an Act of Congress in 1934, the Thomas Jefferson Memorial is the Nation's Monument to its third President.
- In 1937, the Thomas Jefferson Memorial Commission chose John Russel Pope as the Architect for the Memorial.
- Thomas Jefferson Memorial was built on land reclaimed from the swampy banks of the Potomac River. Soil used as fill was dredged directly from the river.
- Construction on the Thomas Jefferson Memorial started in 1938; with Franklin Delano Roosevelt laying the cornerstone of the building on November 15, 1939.
- The Memorial was dedicated in 1943, and has since become a National Landmark, and in 1966 was listed in the National Register of Historic Places.
- Throughout the years, the Thomas Jefferson Memorial has undergone many rehabilitations, including interior rehabilitation and site work.



HABS Aerial Photo, 1994



HABS Photo, 1994



HABS Aerial Photo, 1994



HABS South Elevation Photo, 1994

- In 1975, the first attempts were made to remove barriers to access at the Thomas Jefferson Memorial as part of a project to celebrate America's bicentennial.
- The 1975 rehabilitation included modifying the original planter on the south side of the Memorial to create two accessible sloped walkways. The 1975 rehabilitation also included providing toilet facilities on the lower level and a new elevator, that allowed visitors with disabilities to visit the Portico and Statuary Chamber Levels of the Memorial.
- In 1998, the Memorial underwent another major rehabilitation to remove additional barriers.
- The 1998 rehabilitation expanded the Lower Level of the Memorial to allow for an exhibit space, a bookstore, and a gift shop. The existing restrooms were relocated, enlarged and made accessible, with the addition of a family restroom.
- During this rehabilitation, the elevator was replaced in kind.



Purpose of the Project

- Remove or reduce barriers to access for all visitors to the Memorial.
- Improve experience of all visitors to the Memorial.





Why is the project needed?

- Accessible route to the interior is over 1,000 feet long and winding.
- There is only one accessible route to the chamber level.
- Designated accessible parking may be blocked by buses.
- No access aisle protected from traffic.





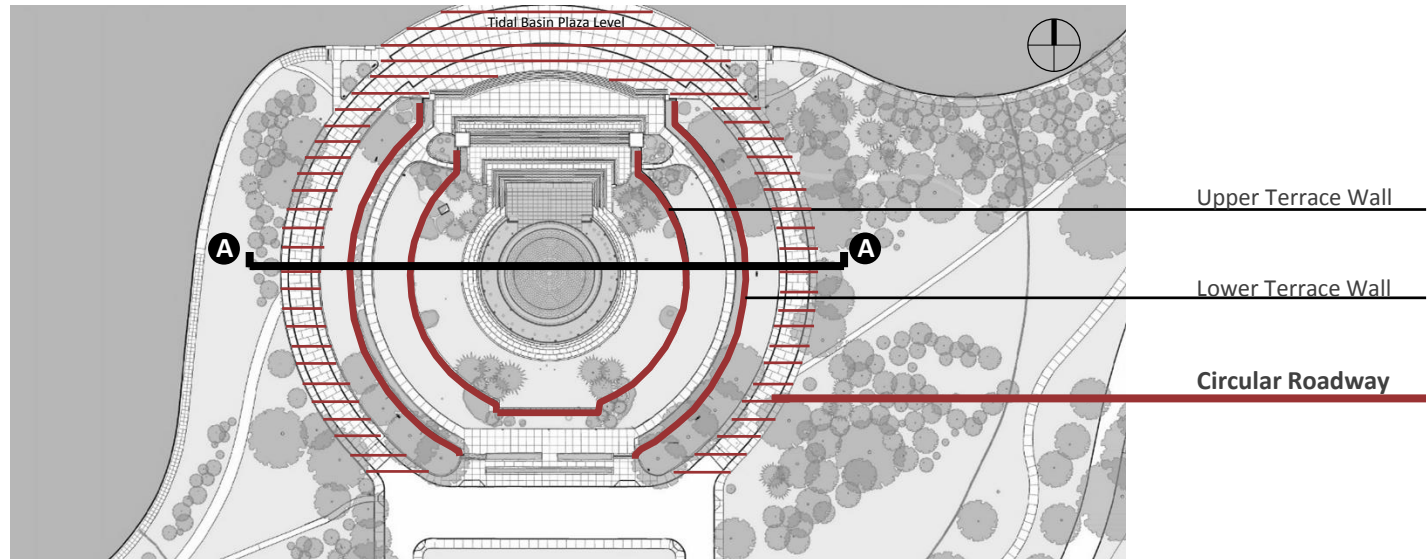
Existing Conditions: Levels of the Memorial



Tidal Basin Plaza Level



Circular Roadway and Lower Terrace



Statuary Chamber Level (31.58')

Upper Terrace (~21.14')

Portico Level (29.86')

Lower Terrace (~10.51')

Lower Level (8.04')



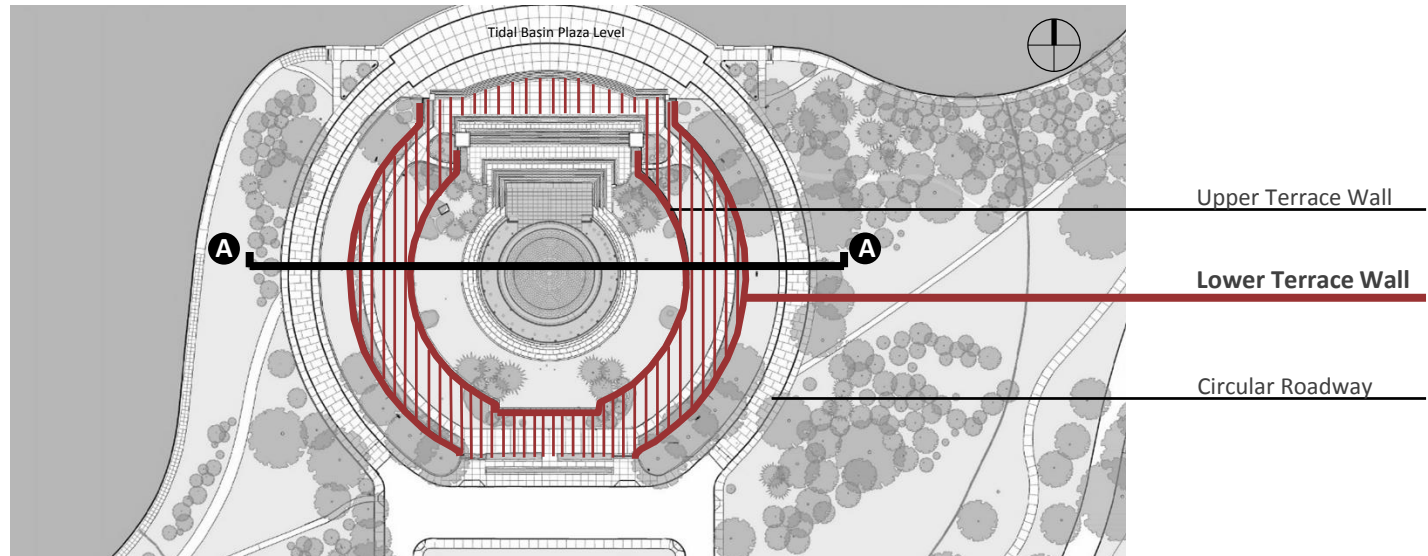
Existing Conditions: Levels of the Memorial



Tidal Basin Plaza Level



Circular Roadway and Lower Terrace



Statuary Chamber Level (31.58')

Upper Terrace (~21.14')

Portico Level (29.86')

Lower Terrace (~10.51')

Lower Level (8.04')



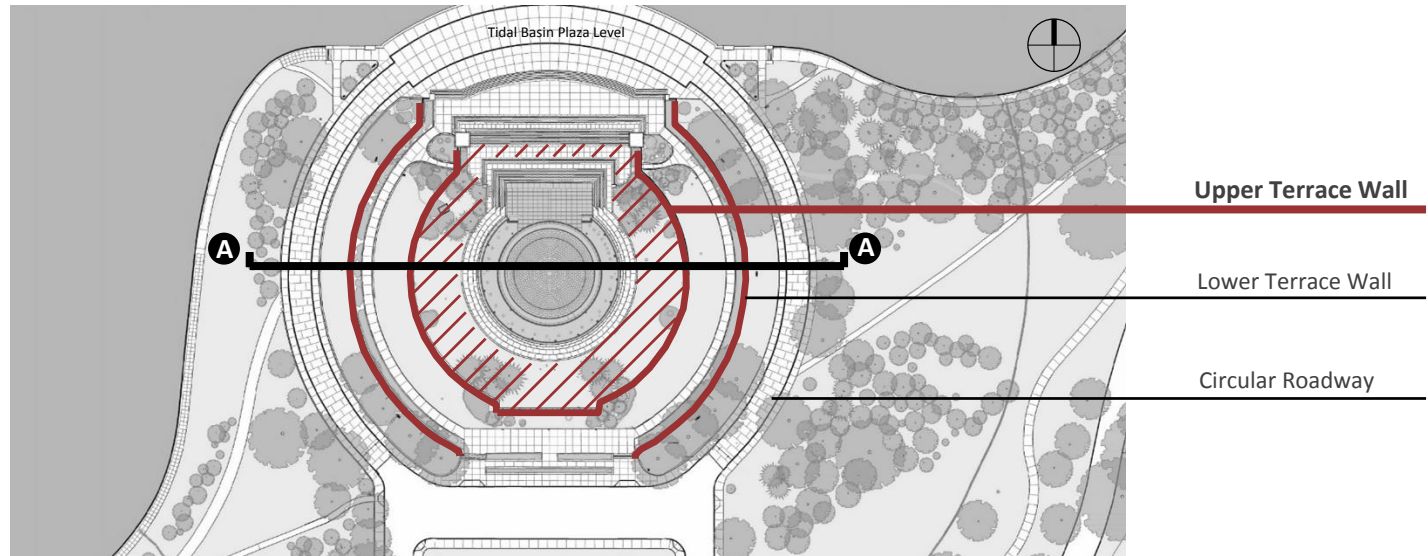
Existing Conditions: Levels of the Memorial



Tidal Basin Plaza Level



Circular Roadway and Lower Terrace



Statuary Chamber Level (31.58')

Upper Terrace (~21.14')

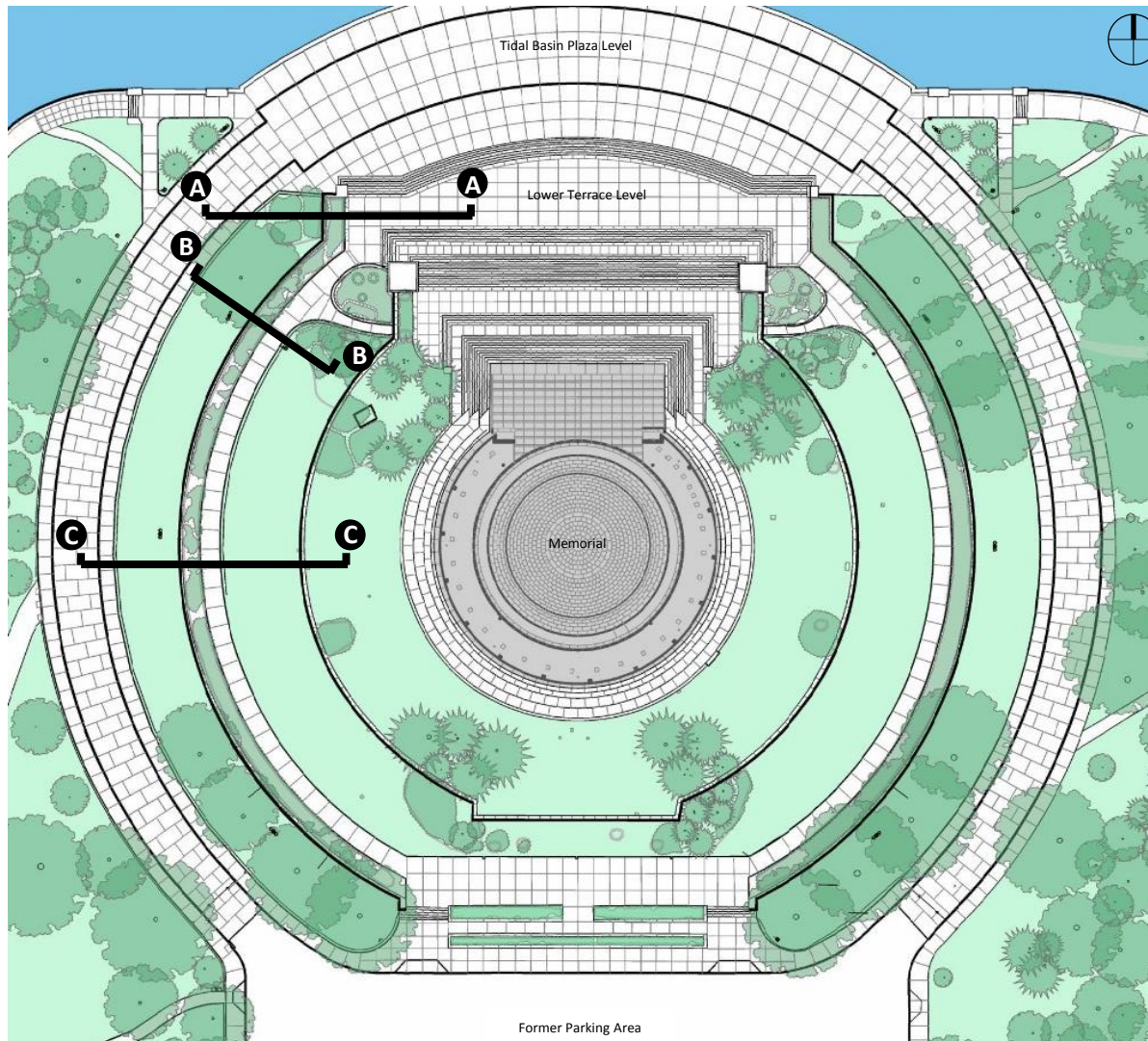
Portico Level (29.86')

Lower Terrace (~10.51')

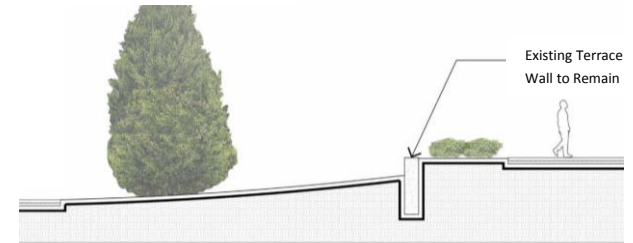
Lower Level (8.04')



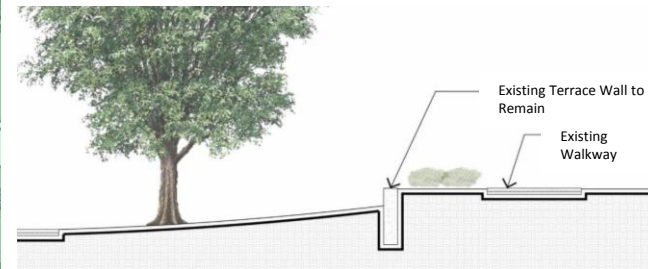
Existing Site Conditions



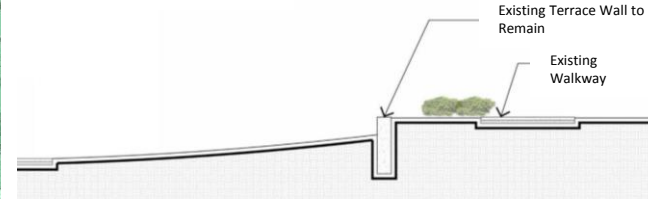
Section A-A



Section B-B



Section C-C





Existing Site Conditions



1

Tidal Basin Plaza Level



4

Yew plantings looking north with Zelkova in foreground



5

Littleleaf Japanese Hollies along Lower Terrace Level



2

Littleleaf Japanese Hollies along Lower Terrace Level



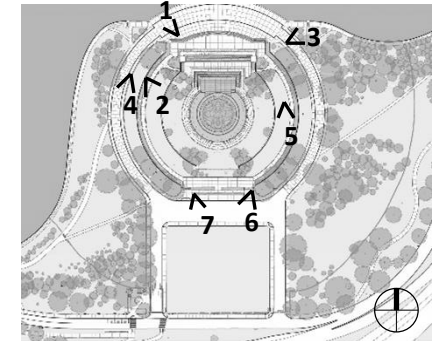
3

Yew plantings looking northwest at Tidal Basin Plaza Level



6

Zelkovas on the southeast side of Memorial

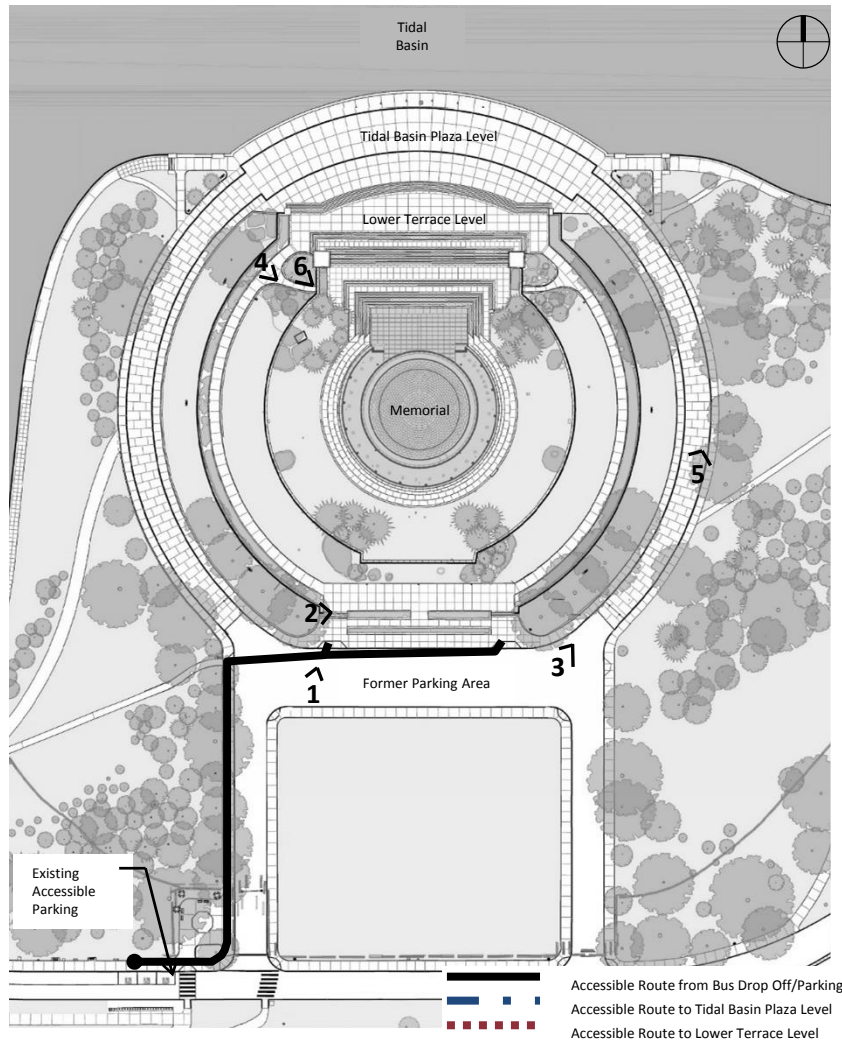


7

Southwest steps to west Terrace Level



Existing Conditions: Current Access to the Site



1 Path to sloped walkways



2 West sloped walkway leading to Lower Terrace Level



3 Entrance to east side Circular Roadway



4 West entrance to Lower Level from Lower Terrace Level



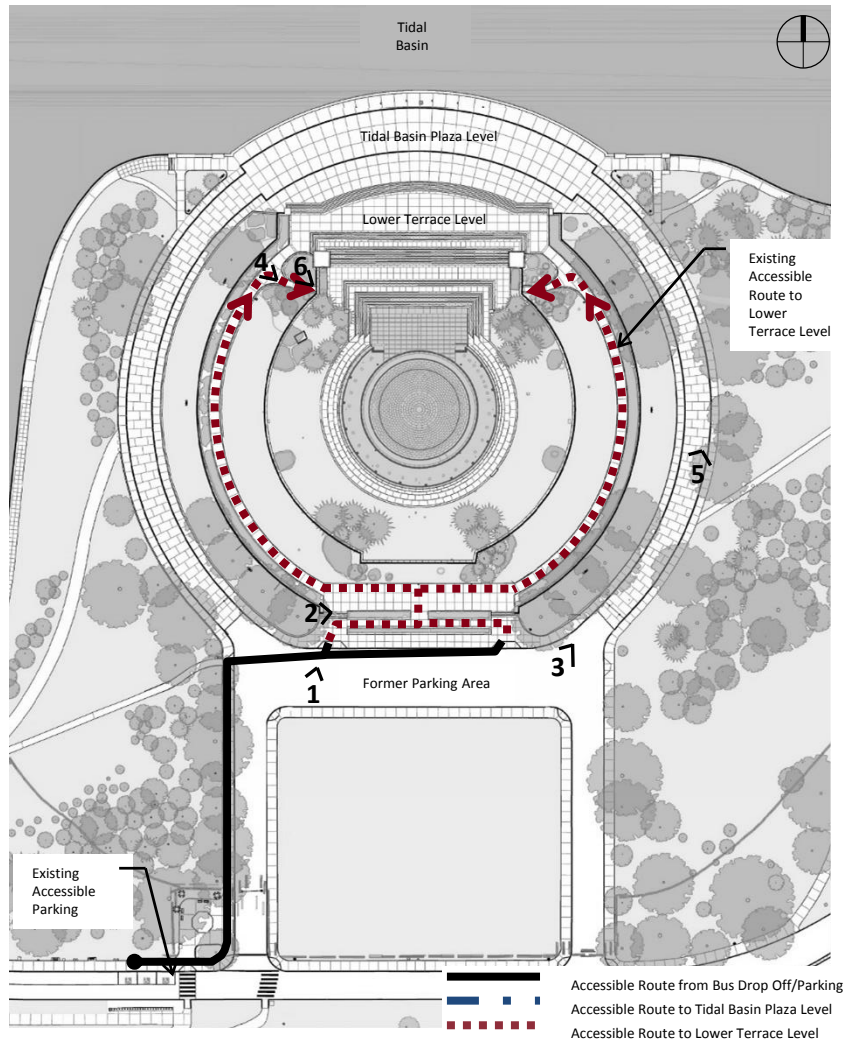
5 East side Circular Roadway



6 Threshold at west side entrance at Lower Terrace Level



Existing Conditions: Current Access to the Site



1 Path to sloped walkways



2 West sloped walkway leading to Lower Terrace Level



3 Entrance to east side Circular Roadway



4 West entrance to Lower Level from Lower Terrace Level



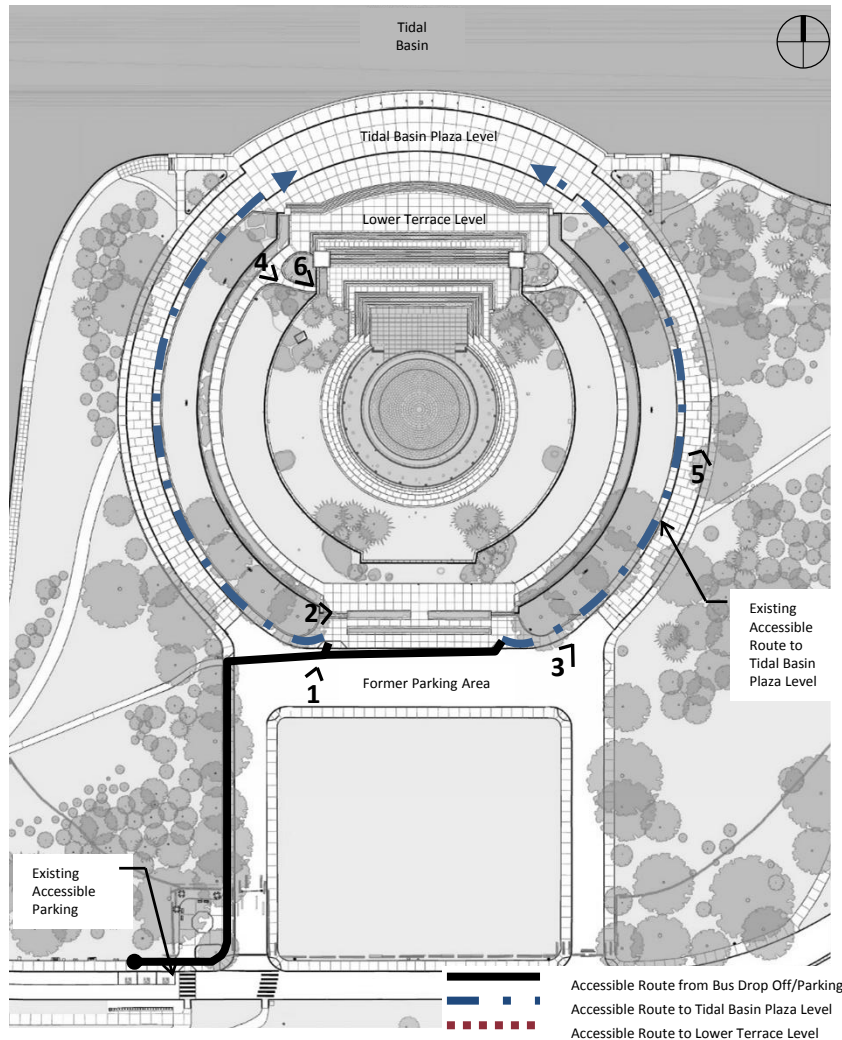
5 East side Circular Roadway



6 Threshold at west side entrance at Lower Terrace Level



Existing Conditions: Current Access to the Site



1 Path to sloped walkways



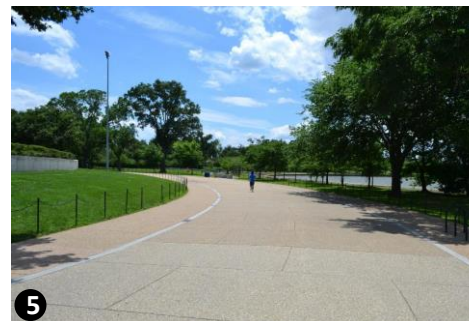
2 West sloped walkway leading to Lower Terrace Level



3 Entrance to east side Circular Roadway



4 West entrance to Lower Level from Lower Terrace Level



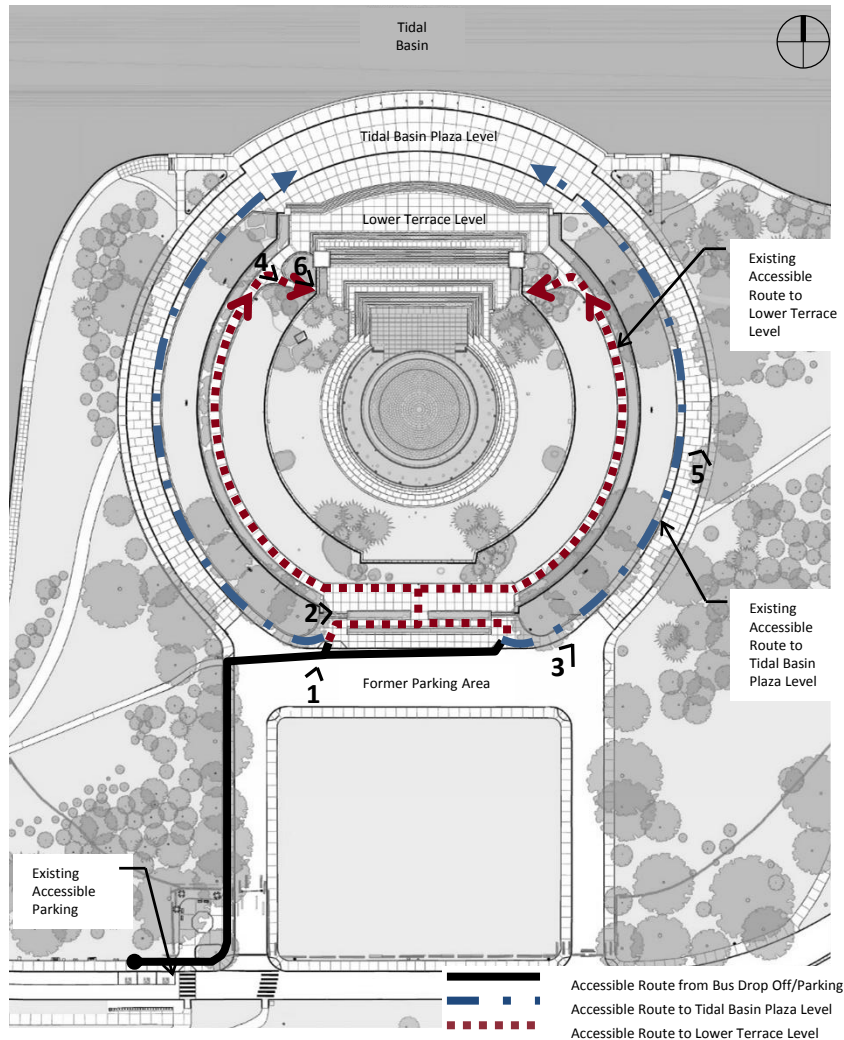
5 East side Circular Roadway



6 Threshold at west side entrance at Lower Terrace Level



Existing Conditions: Current Access to the Site



1 Path to sloped walkways



2 West sloped walkway leading to Lower Terrace Level



3 Entrance to east side Circular Roadway



4 West entrance to Lower Level from Terrace Level



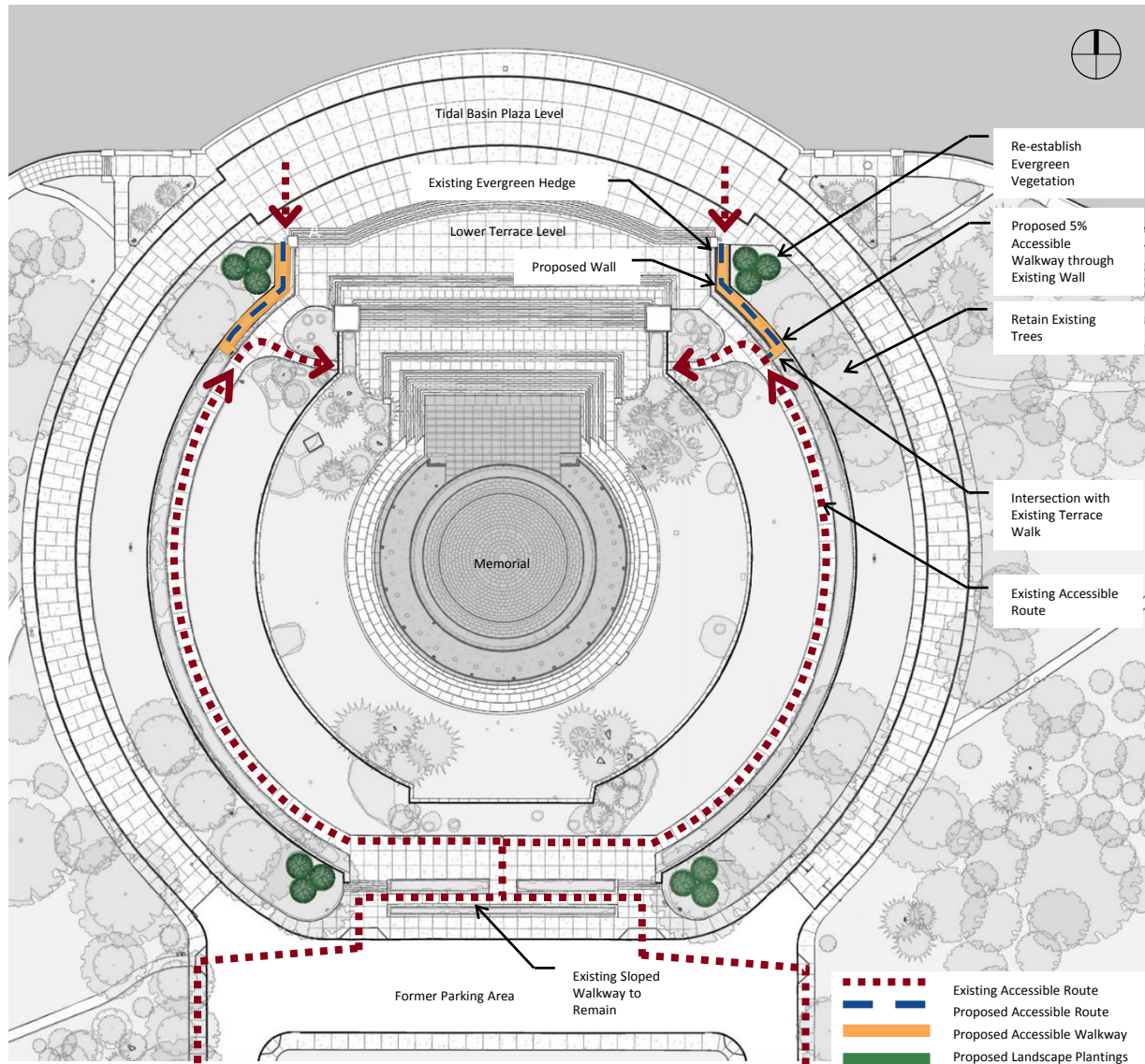
5 East side Circular Roadway



6 Threshold at west side entrance at Terrace Level

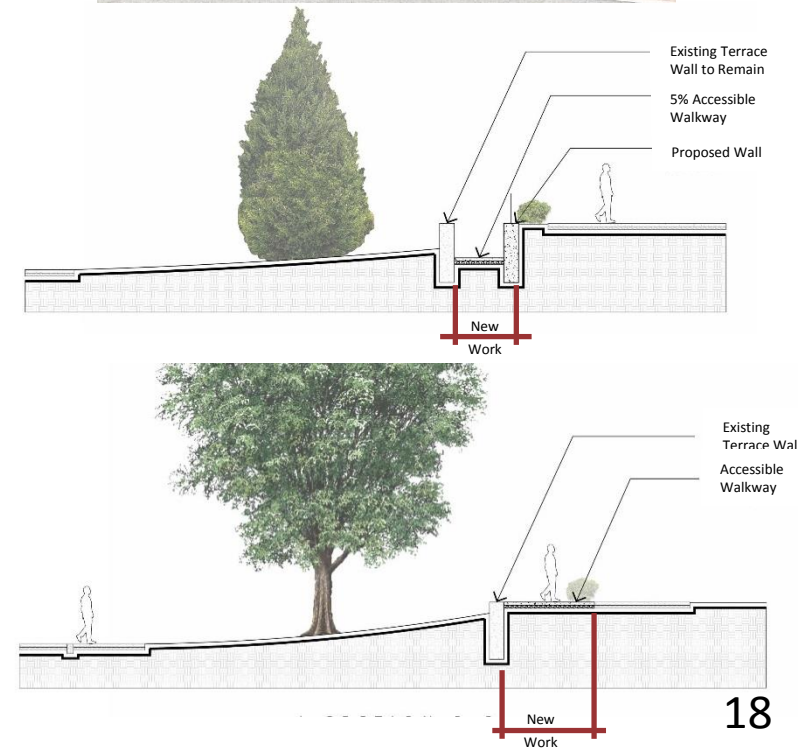
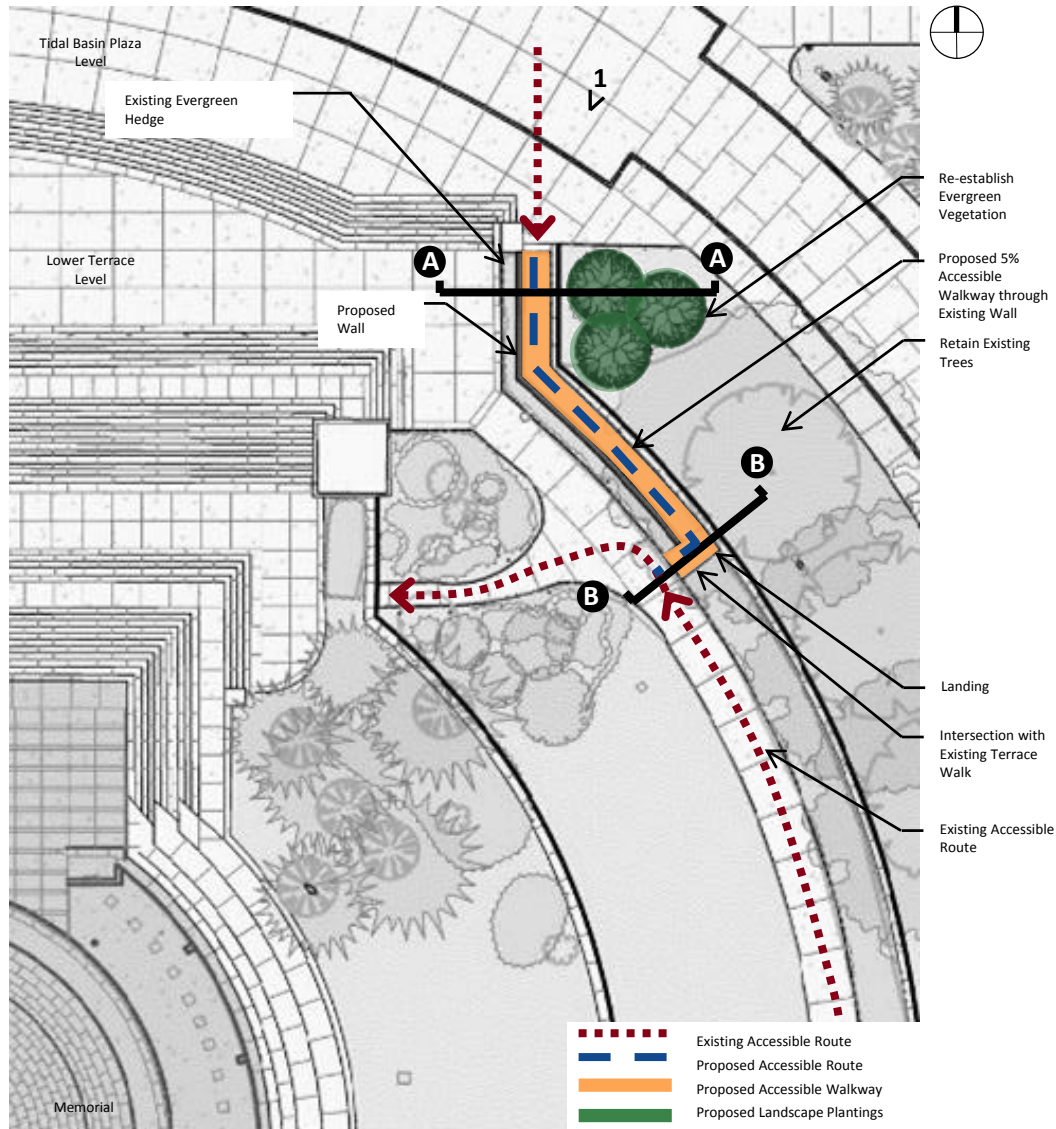


Option 1: Sloped Walkway within Existing Planter





Option 1: Sloped Walkway within Existing Planter



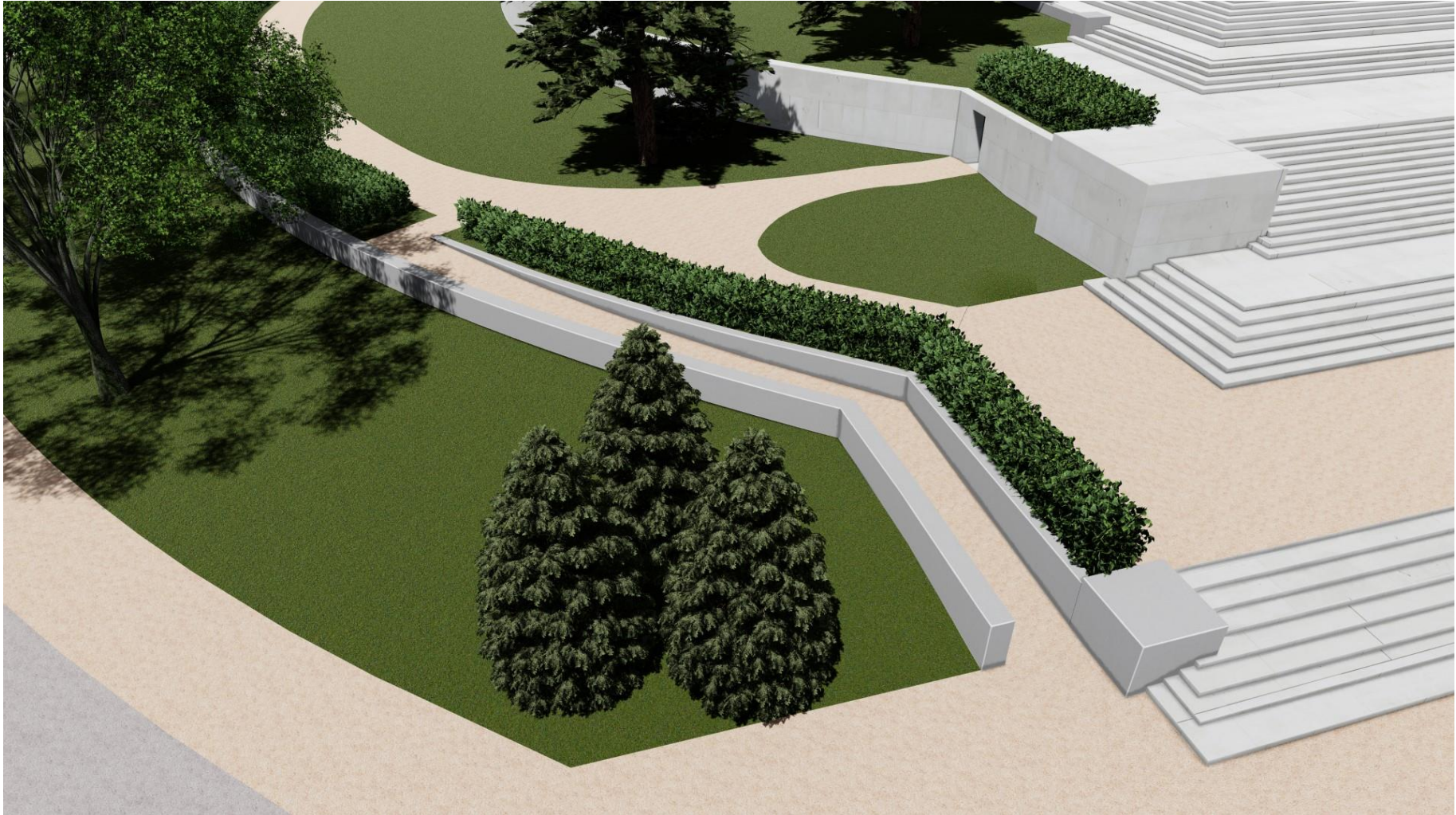


Option 1: Sloped Walkway within Existing Planter



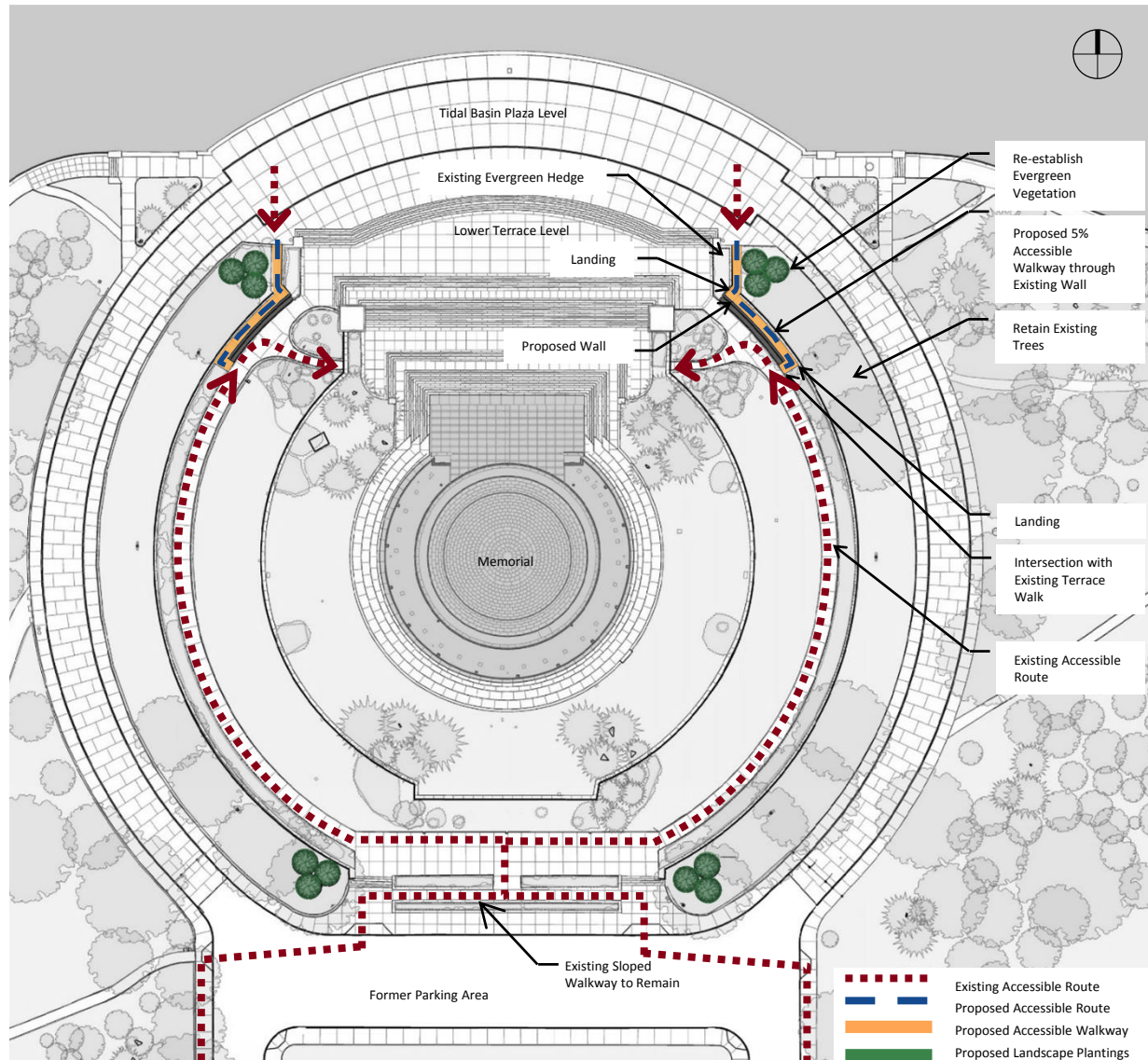


Option 1: Sloped Walkway within Existing Planter



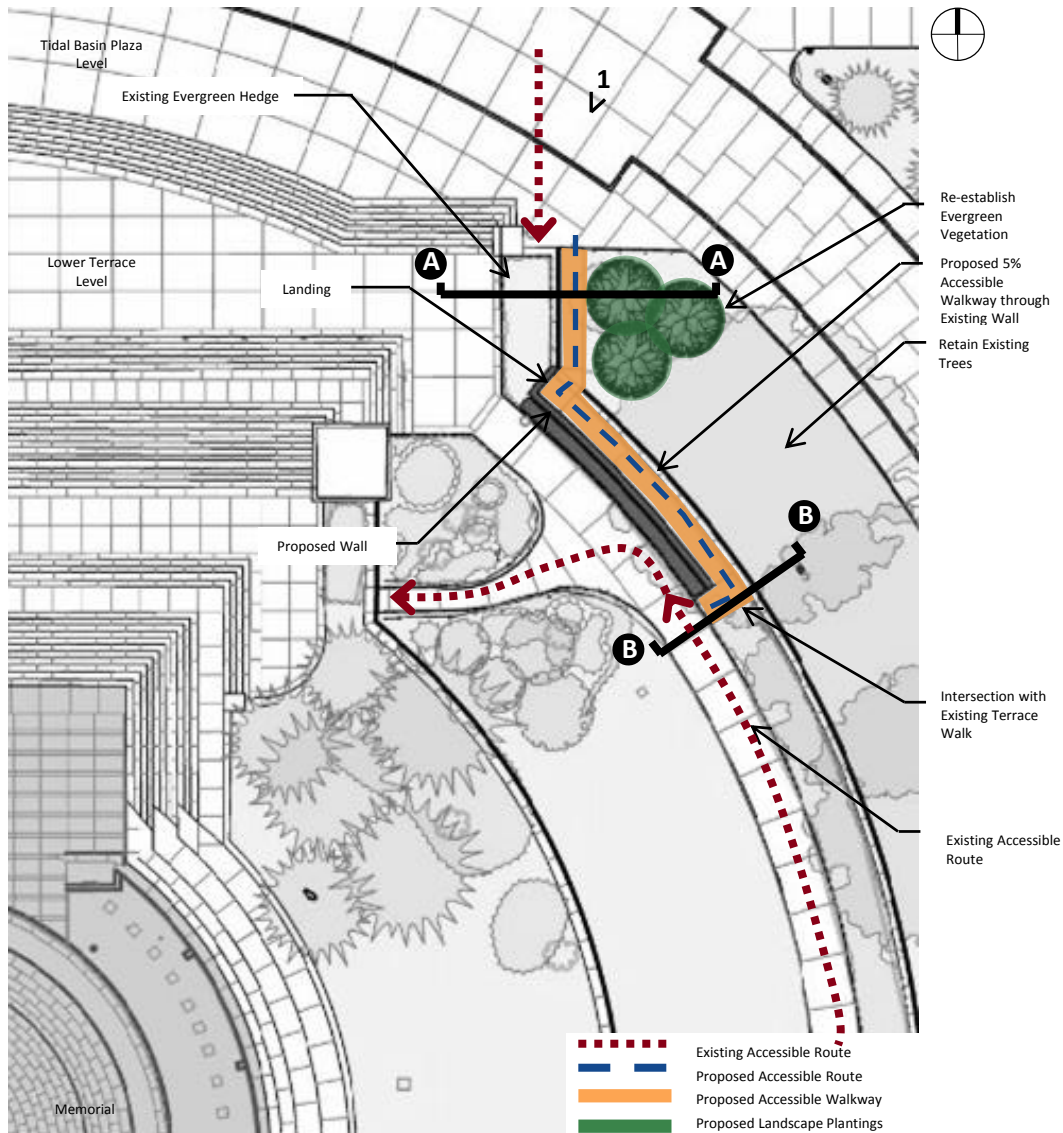


Option 1a: Sloped Walkway partially within Existing Planter

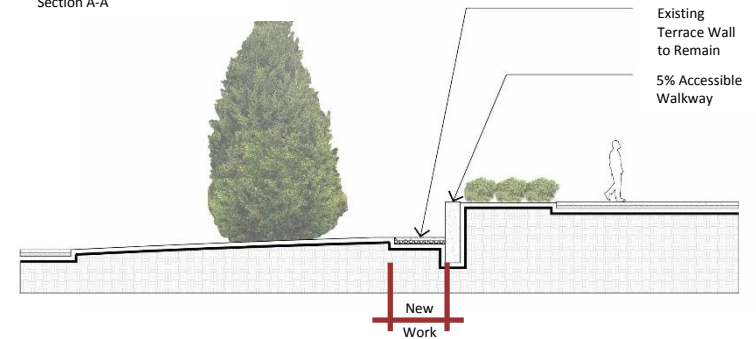




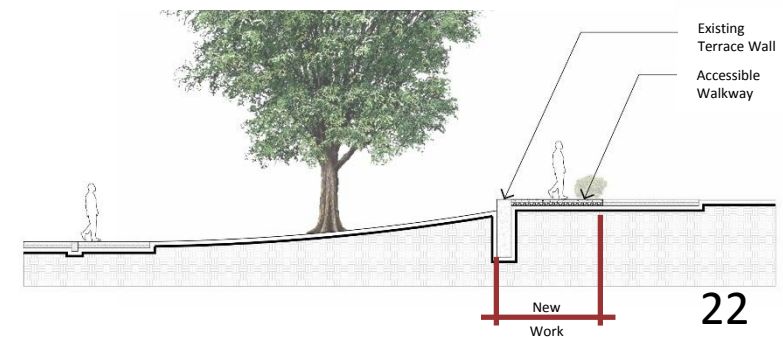
Option 1a: Sloped Walkway partially within Existing Planter



Section A-A



Section B-B



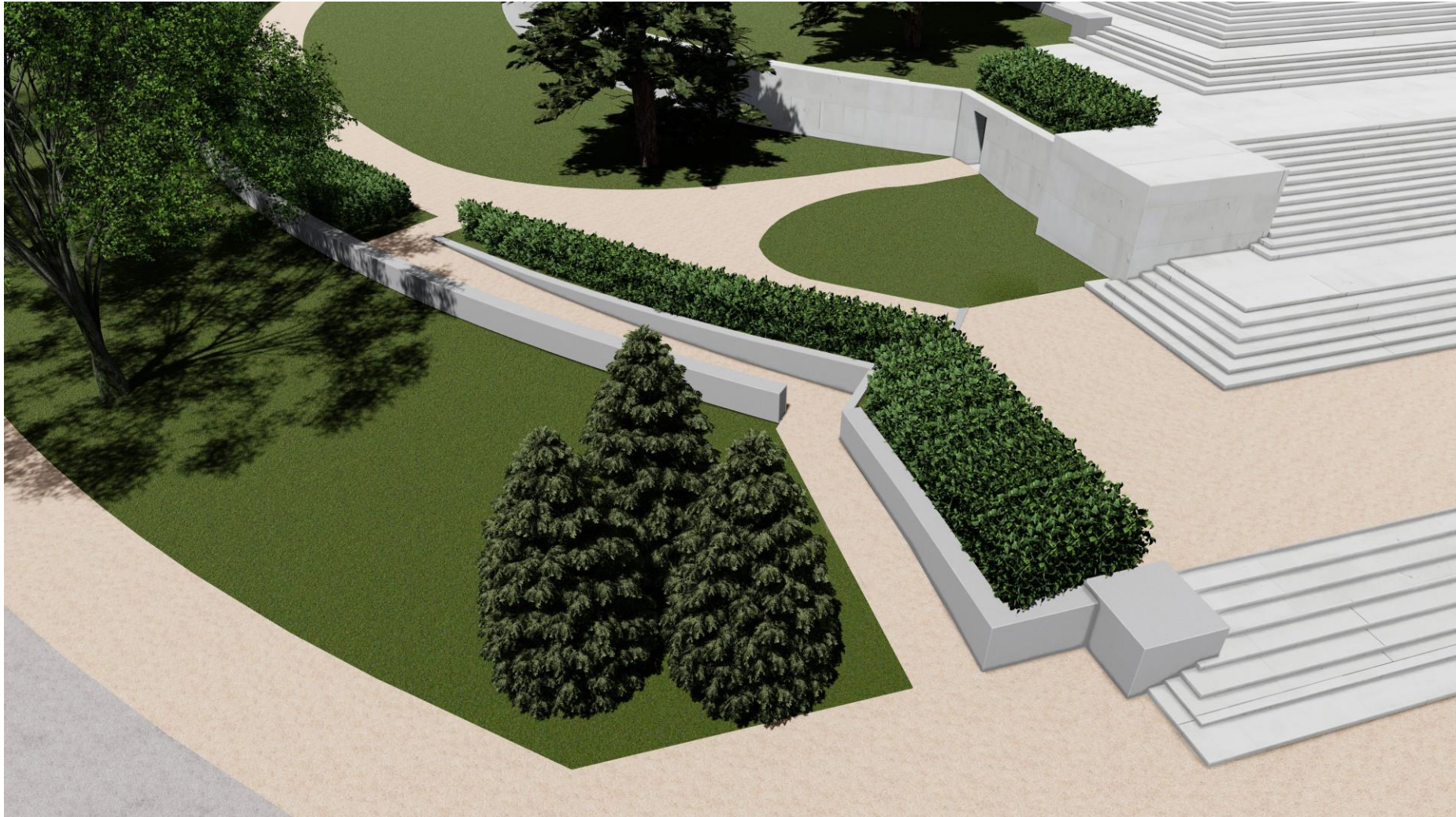


Option 1a: Sloped Walkway partially within Existing Planter



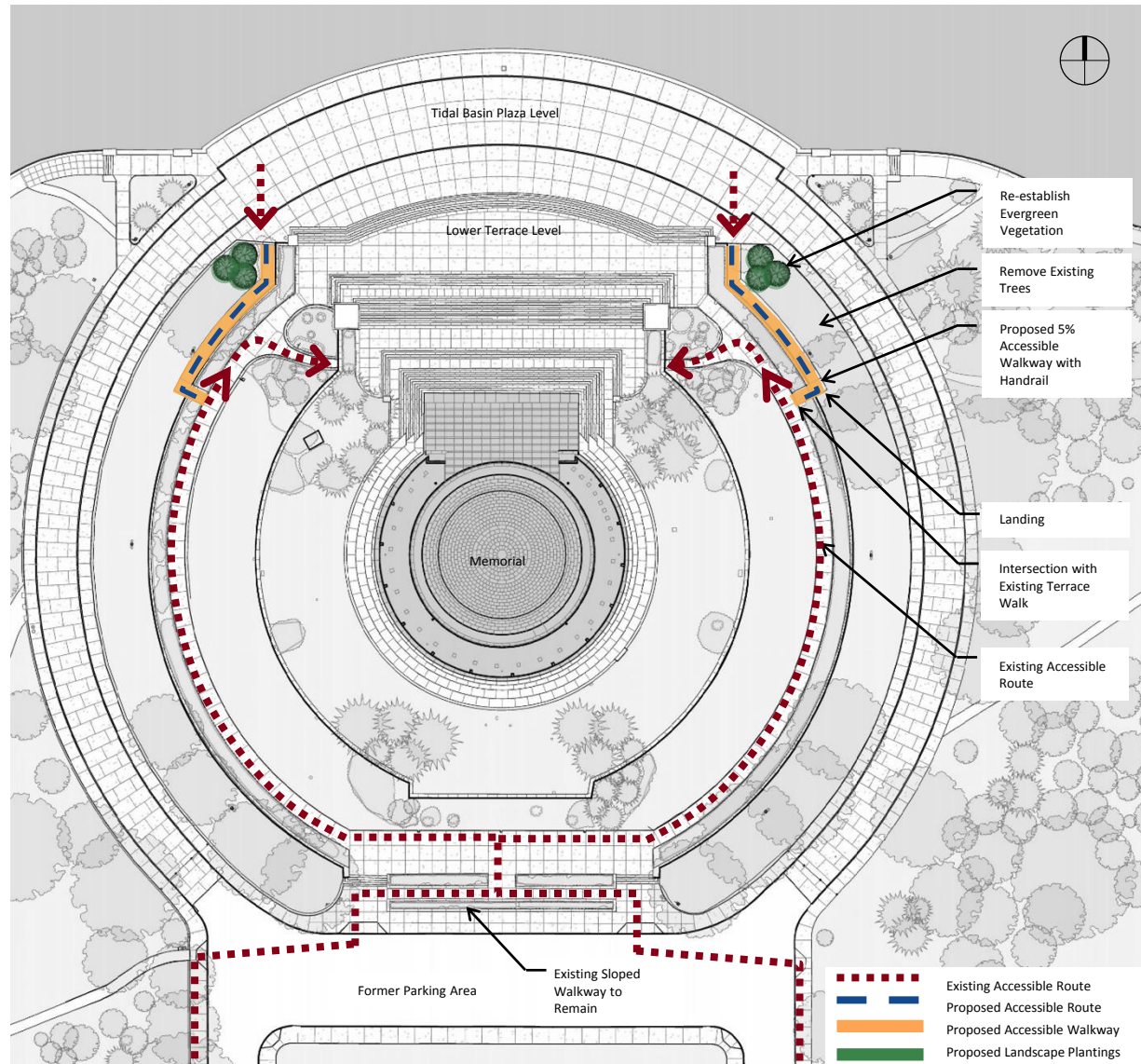


Option 1a: Sloped Walkway partially within Existing Planter



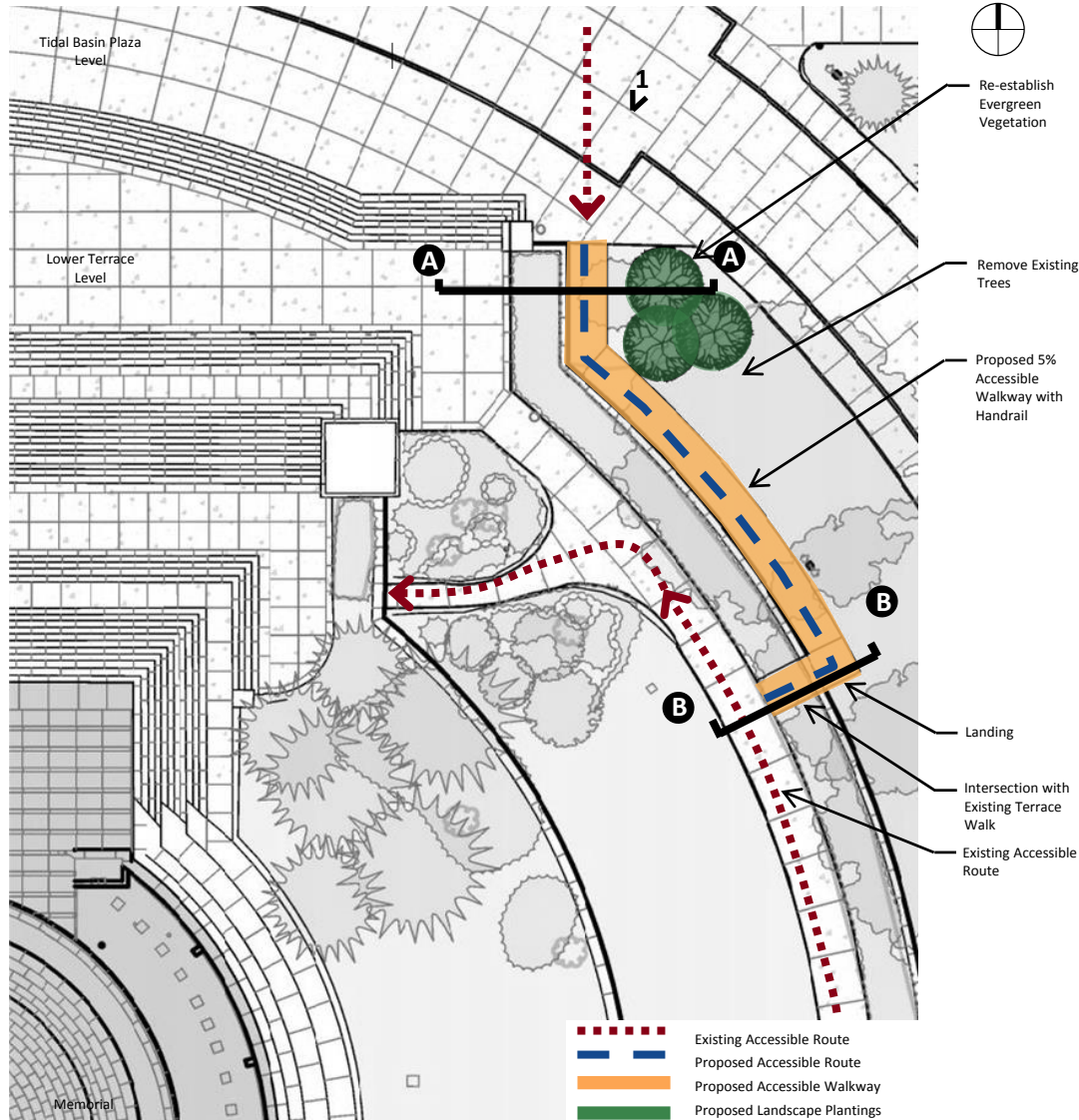


Option 2.1: North Sloped Walkway with Guardrail

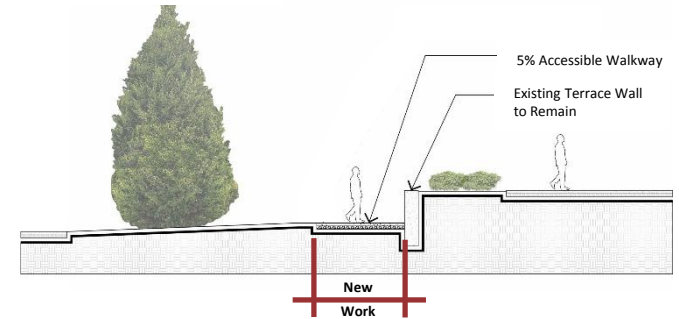




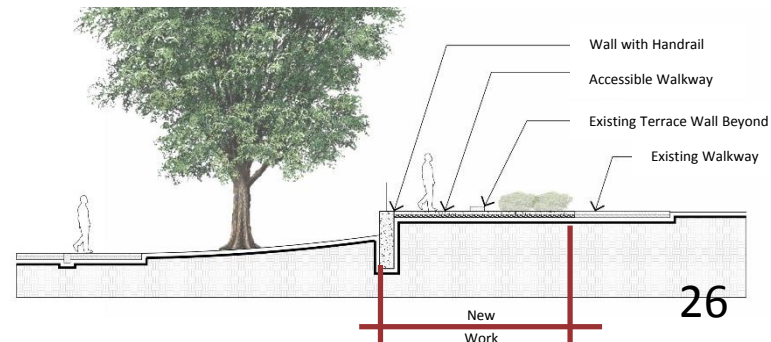
Option 2.1: North Sloped Walkway with Guardrail



Section A-A



Section B-B



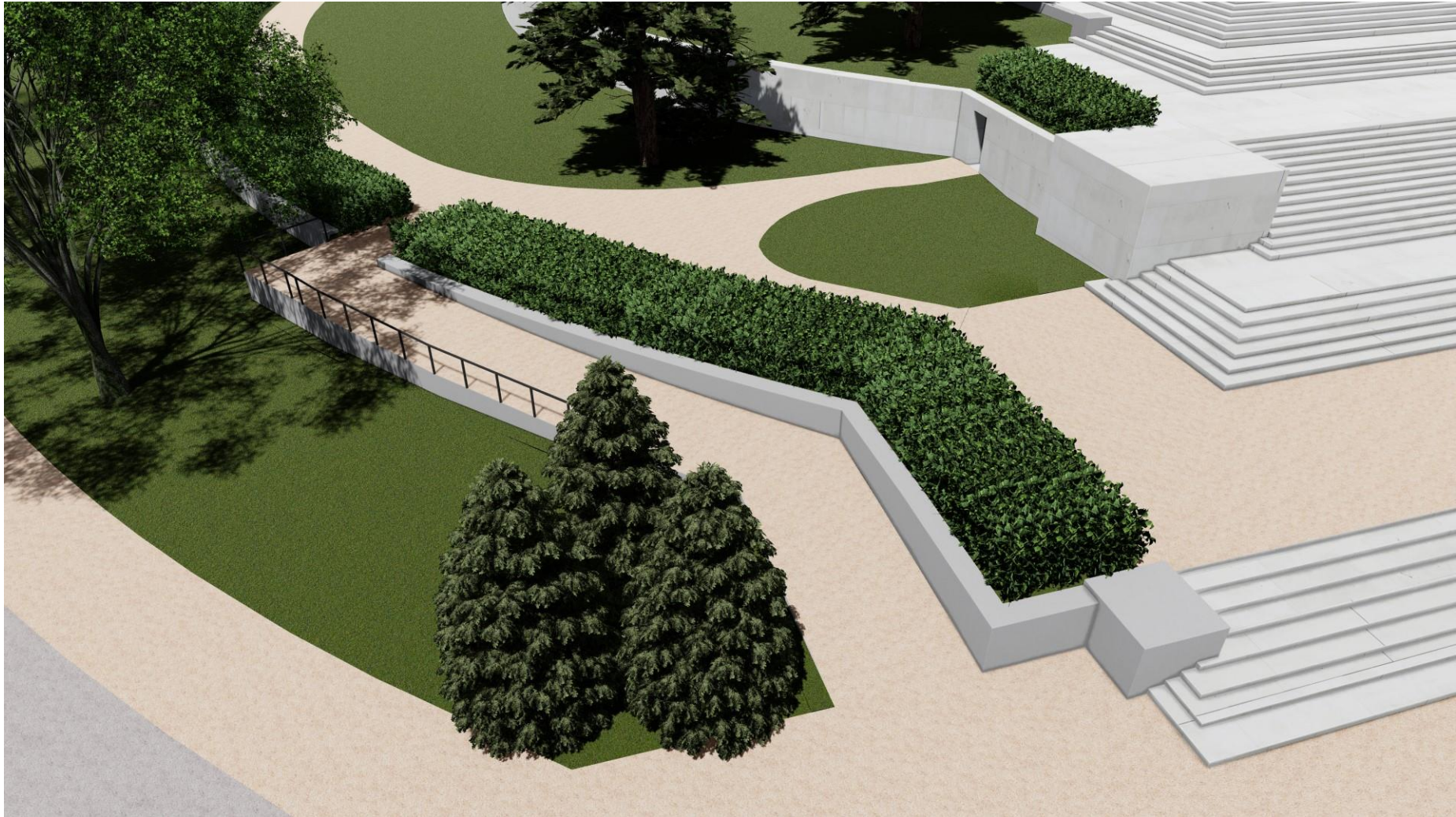


Option 2.1: North Sloped Walkway with Guardrail

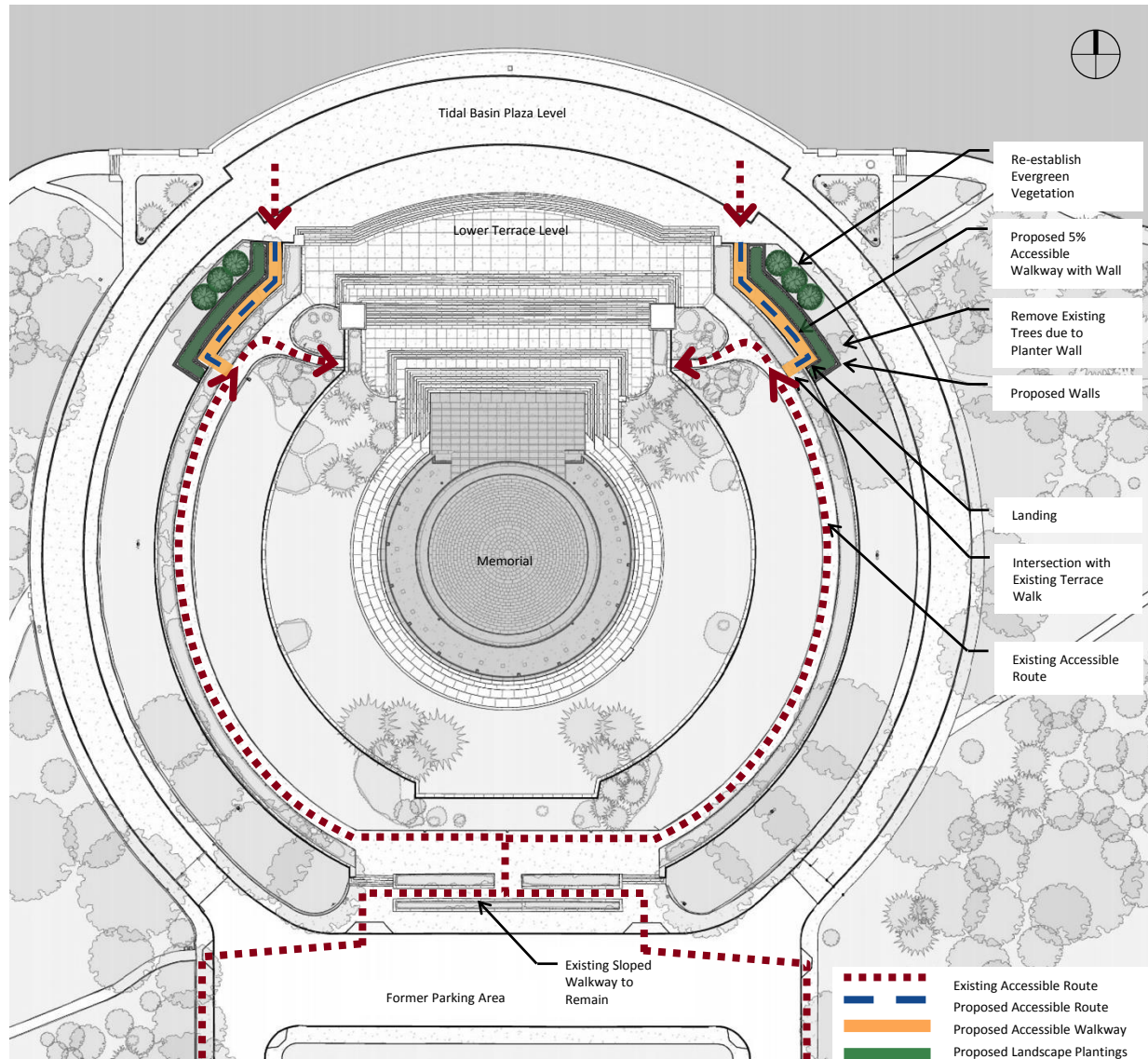




Option 2.1: North Sloped Walkway with Guardrail

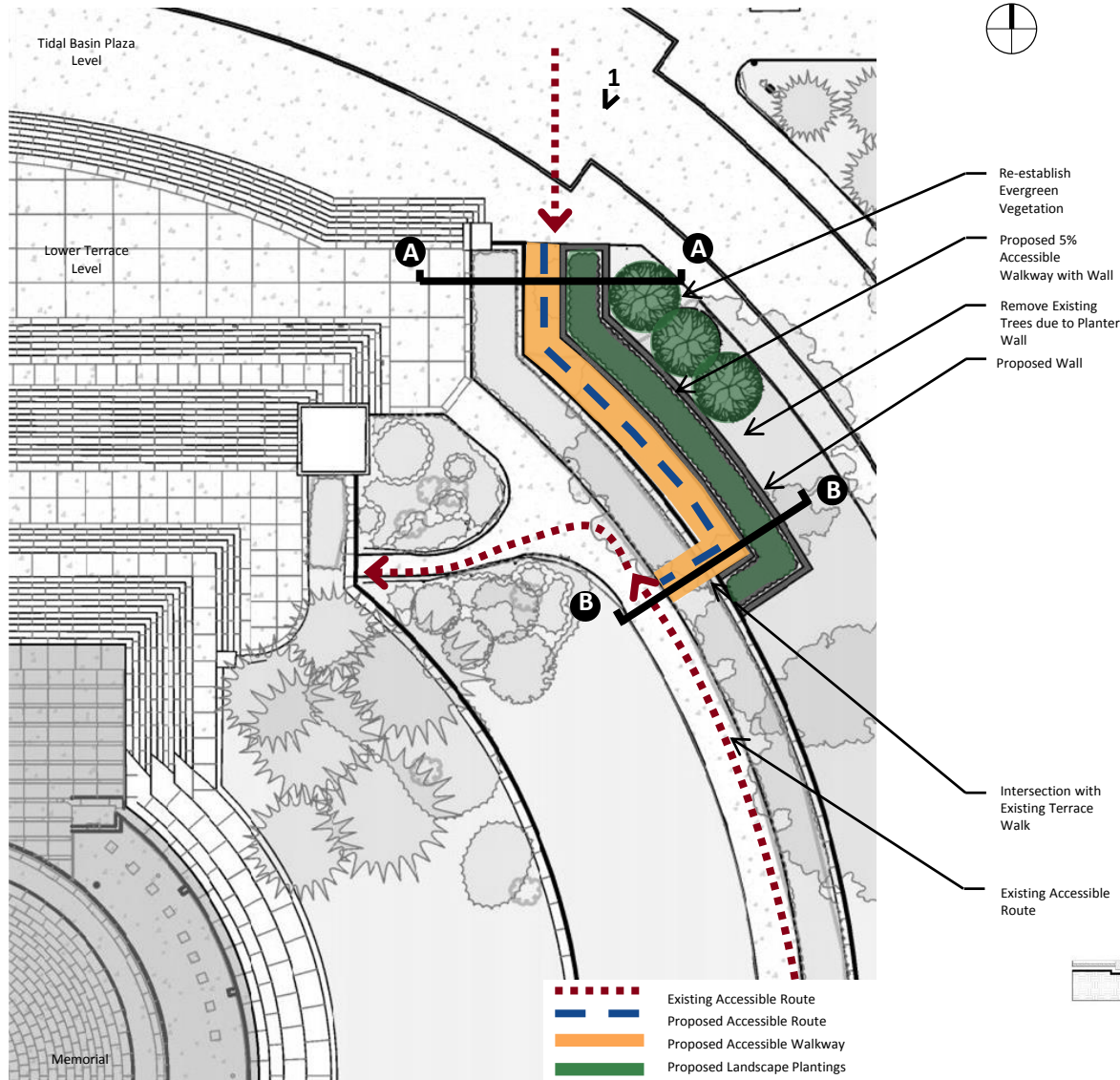


Option 2.2: North Sloped Walkway with Planter

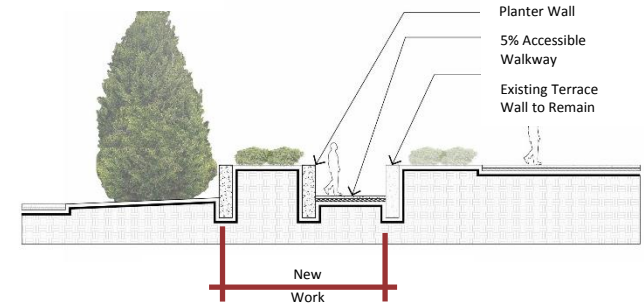




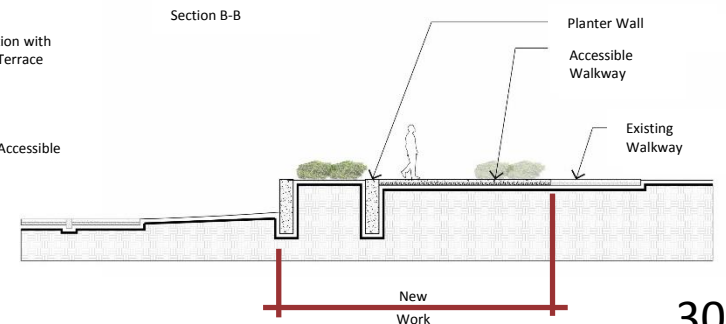
Option 2.2: North Sloped Walkway with Planter



Section A-A

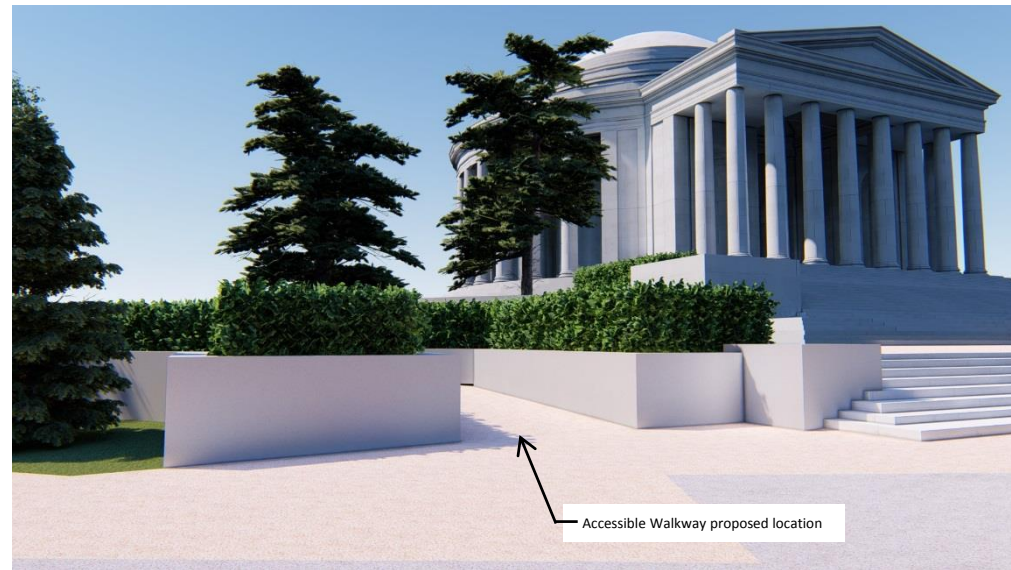


Section B-B





Option 2.2: North Sloped Walkway with Planter



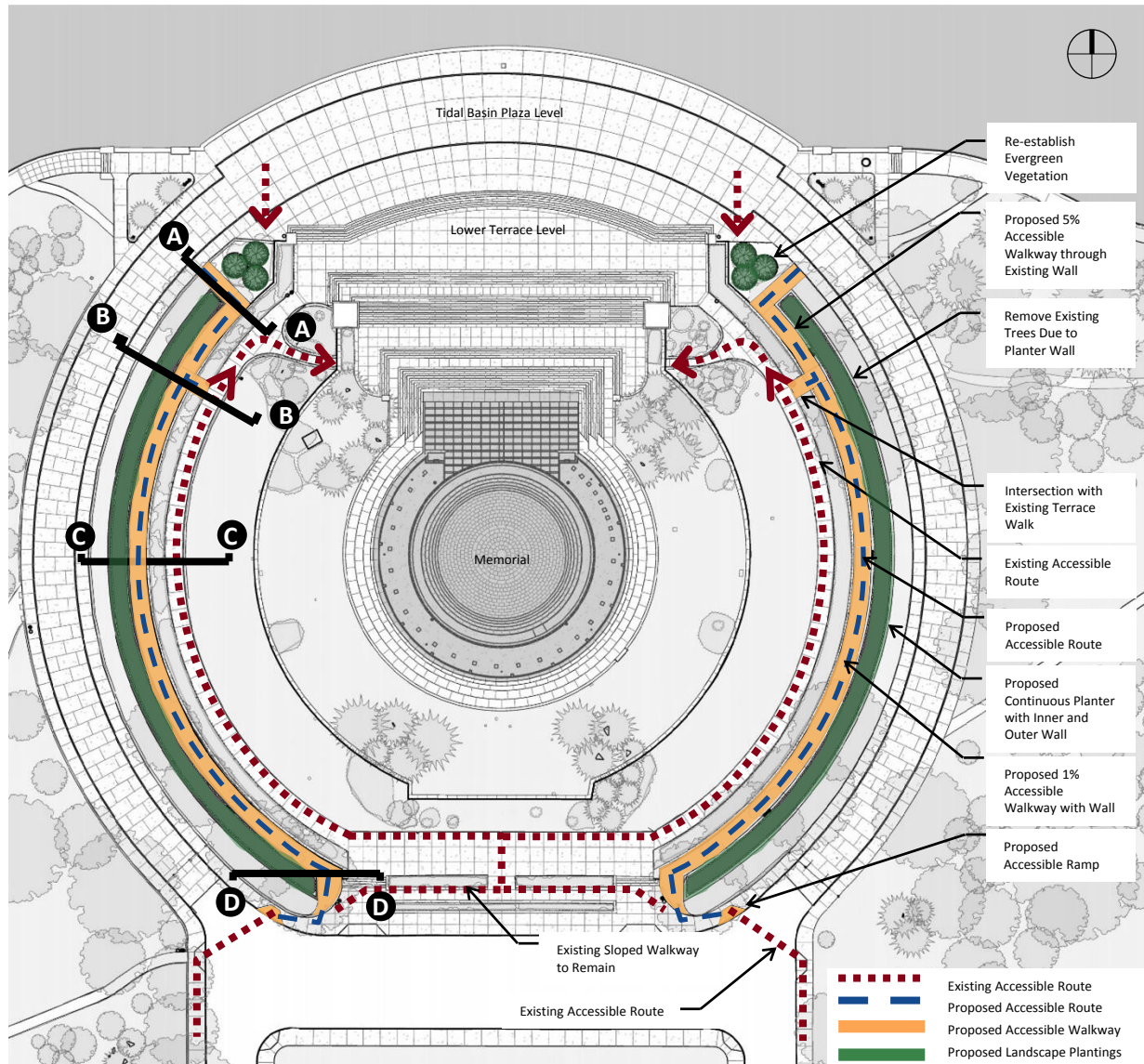


Option 2.2: North Sloped Walkway with Planter

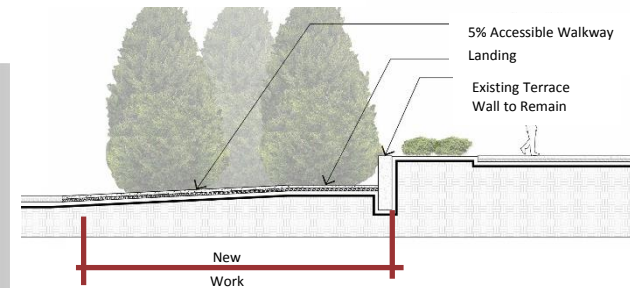




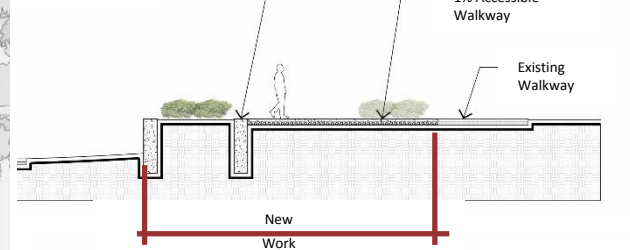
Option 3: Continuous Sloped Walkway with Planter



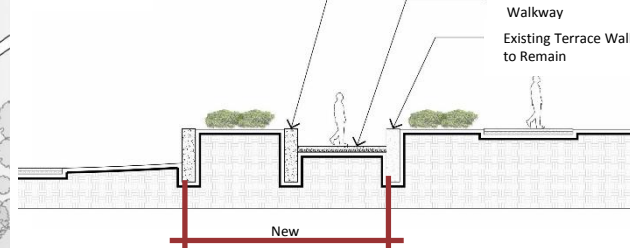
Section A-A



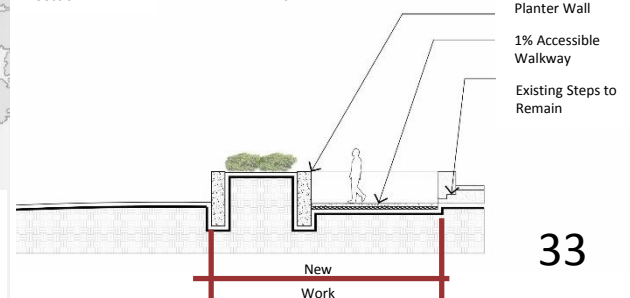
Section B-B



Section C-C



Section D-D



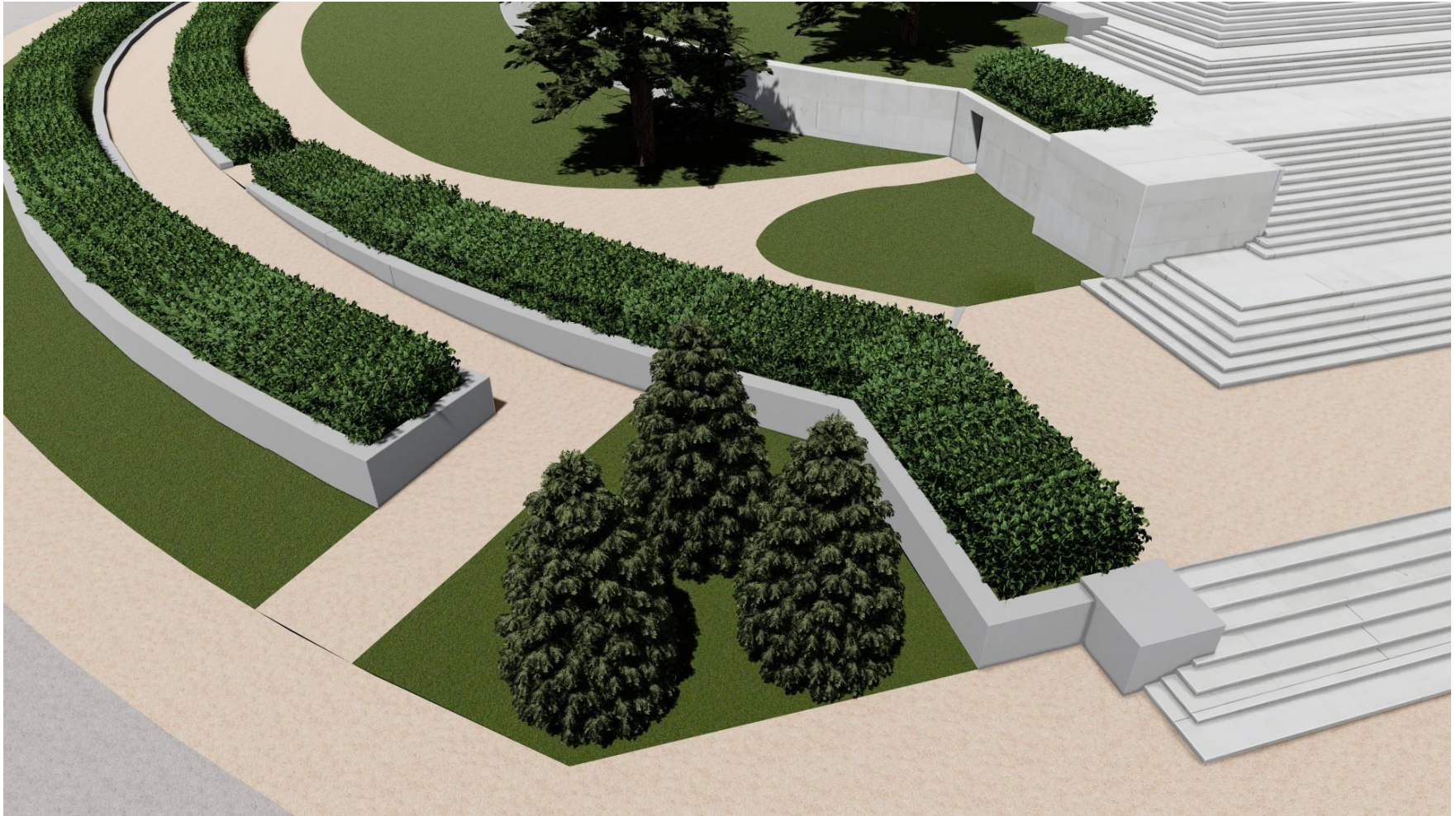


Option 3: Continuous Sloped Walkway with Planter



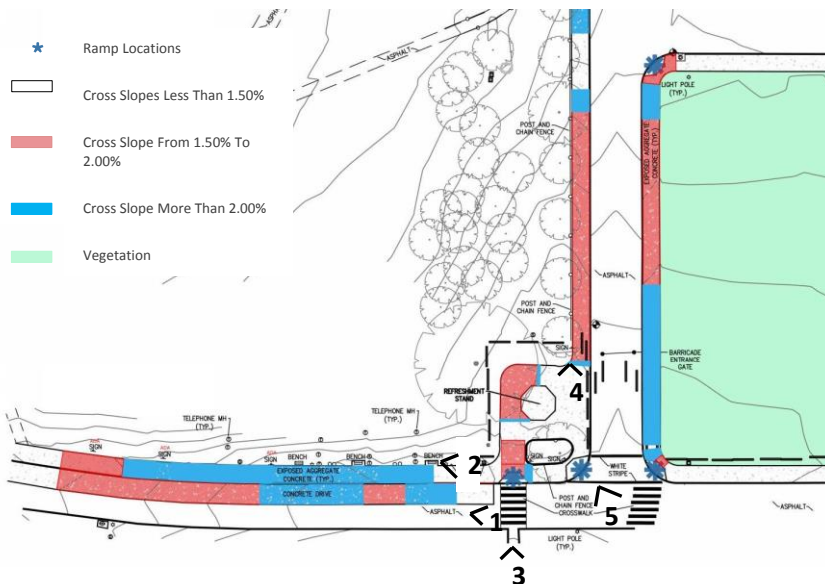
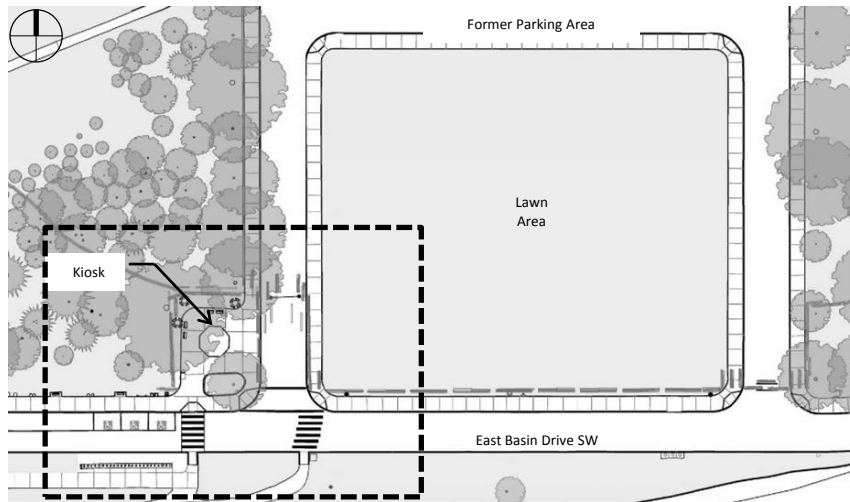


Option 3: Continuous Sloped Walkway with Planter





Existing Site Conditions: Current Access To Site



Reserved parking spots along East Basin Drive SW



Bus using reserved parking



Granite sloped walkway at end of designated parking area



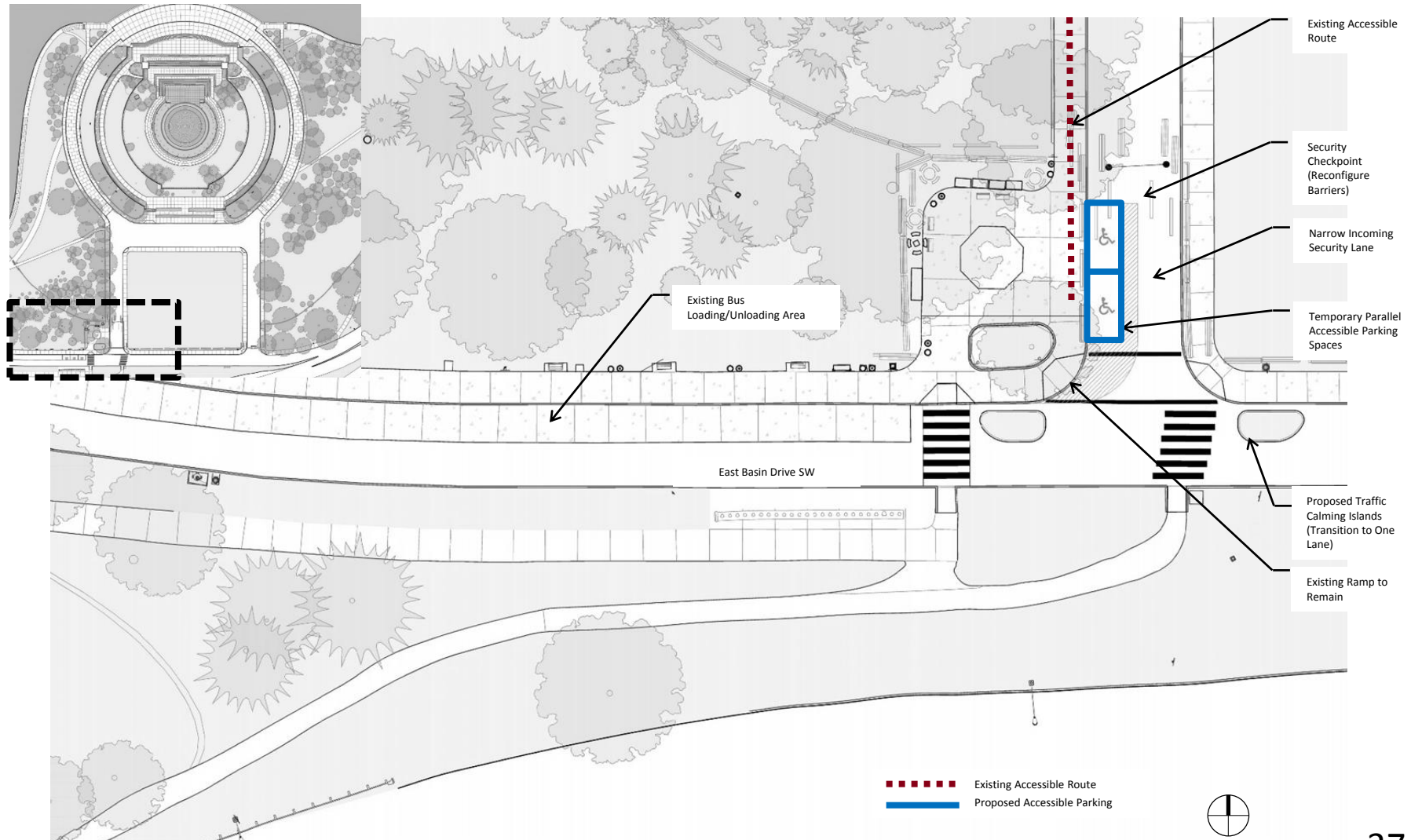
Southwest approach to Memorial from refreshment kiosk



South approach to refreshment kiosk

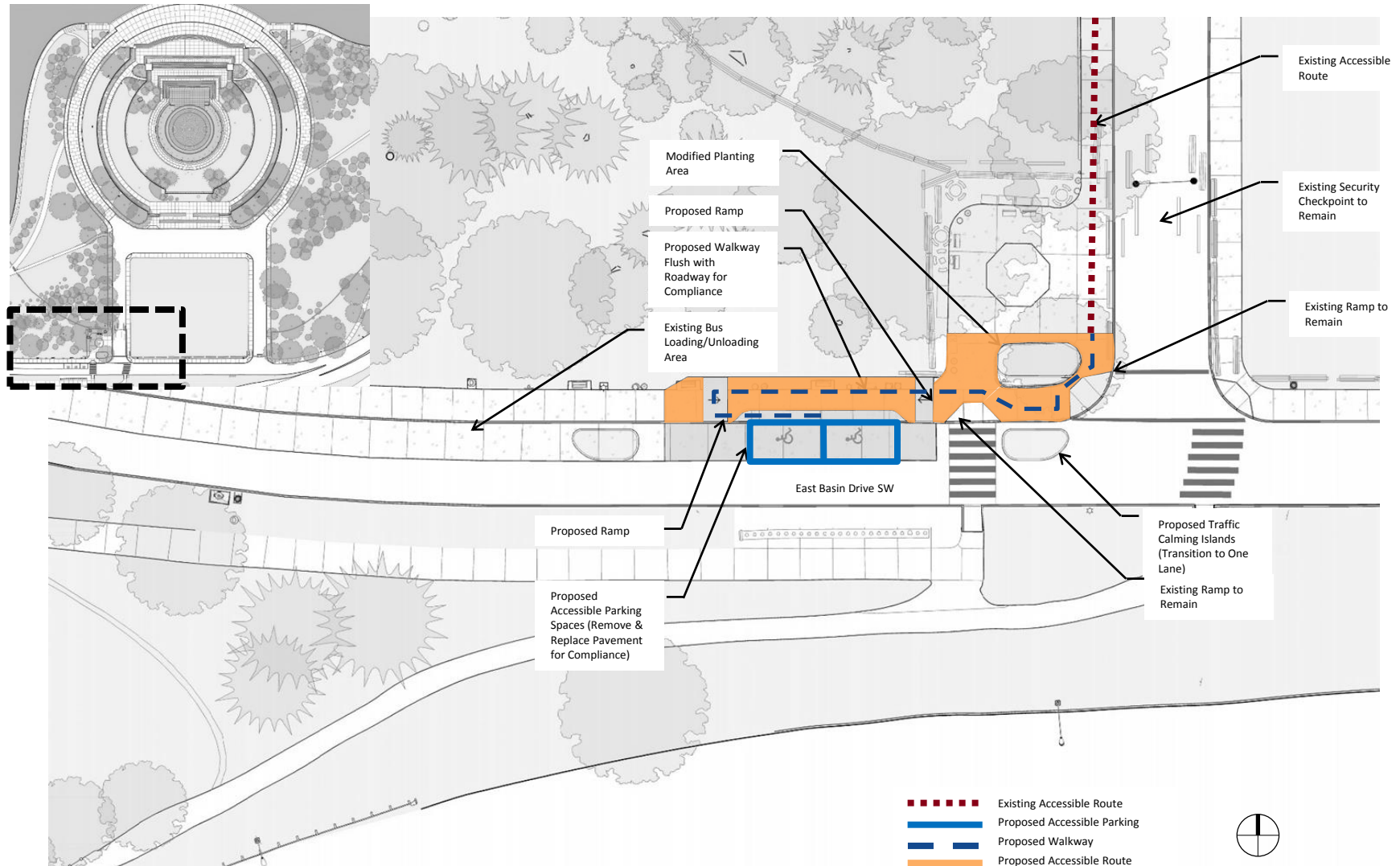


Option 4.1: Temporary Parallel Parking at Kiosk Location



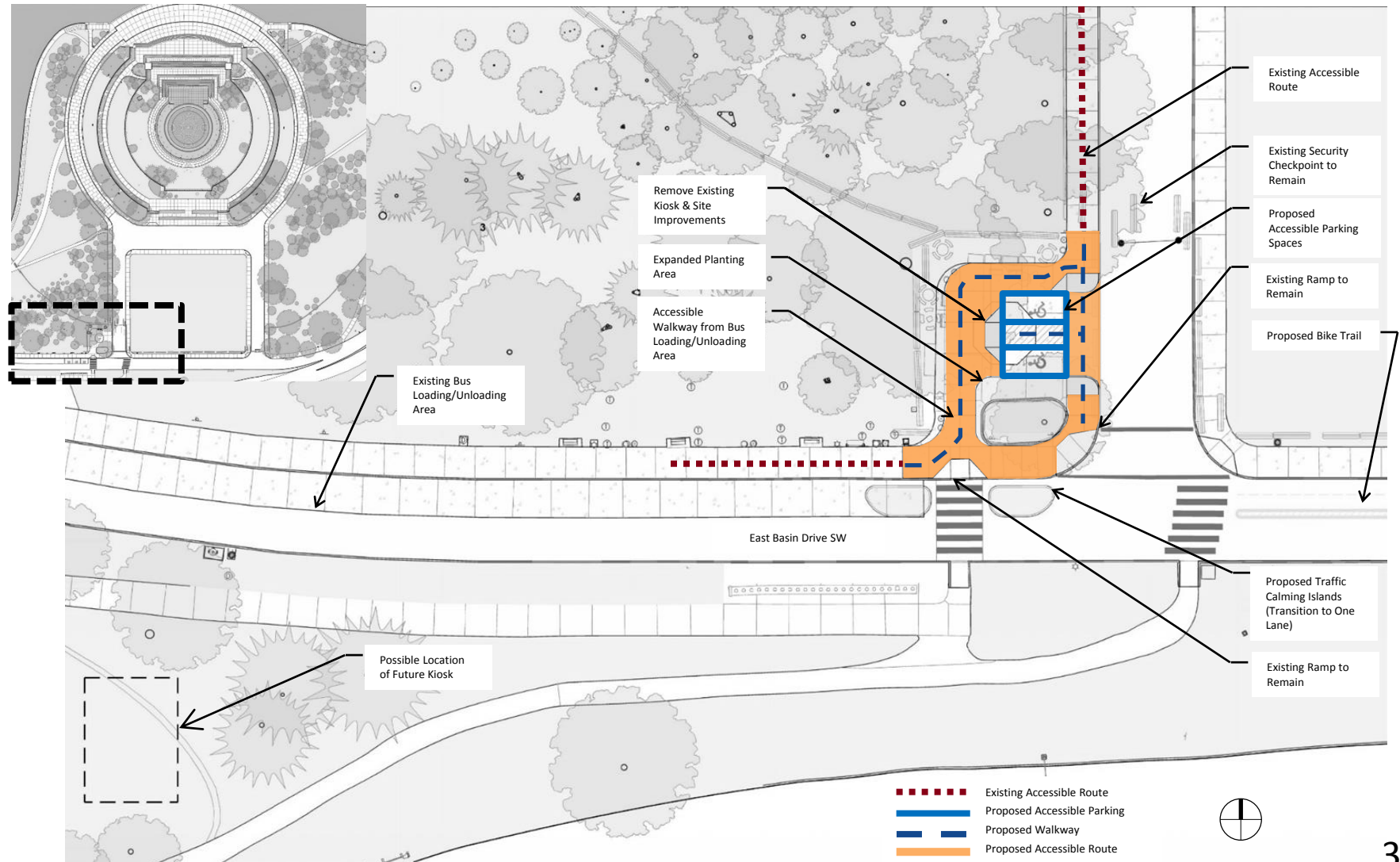


Option 4.2: Accessible Parking Spaces in Existing Location



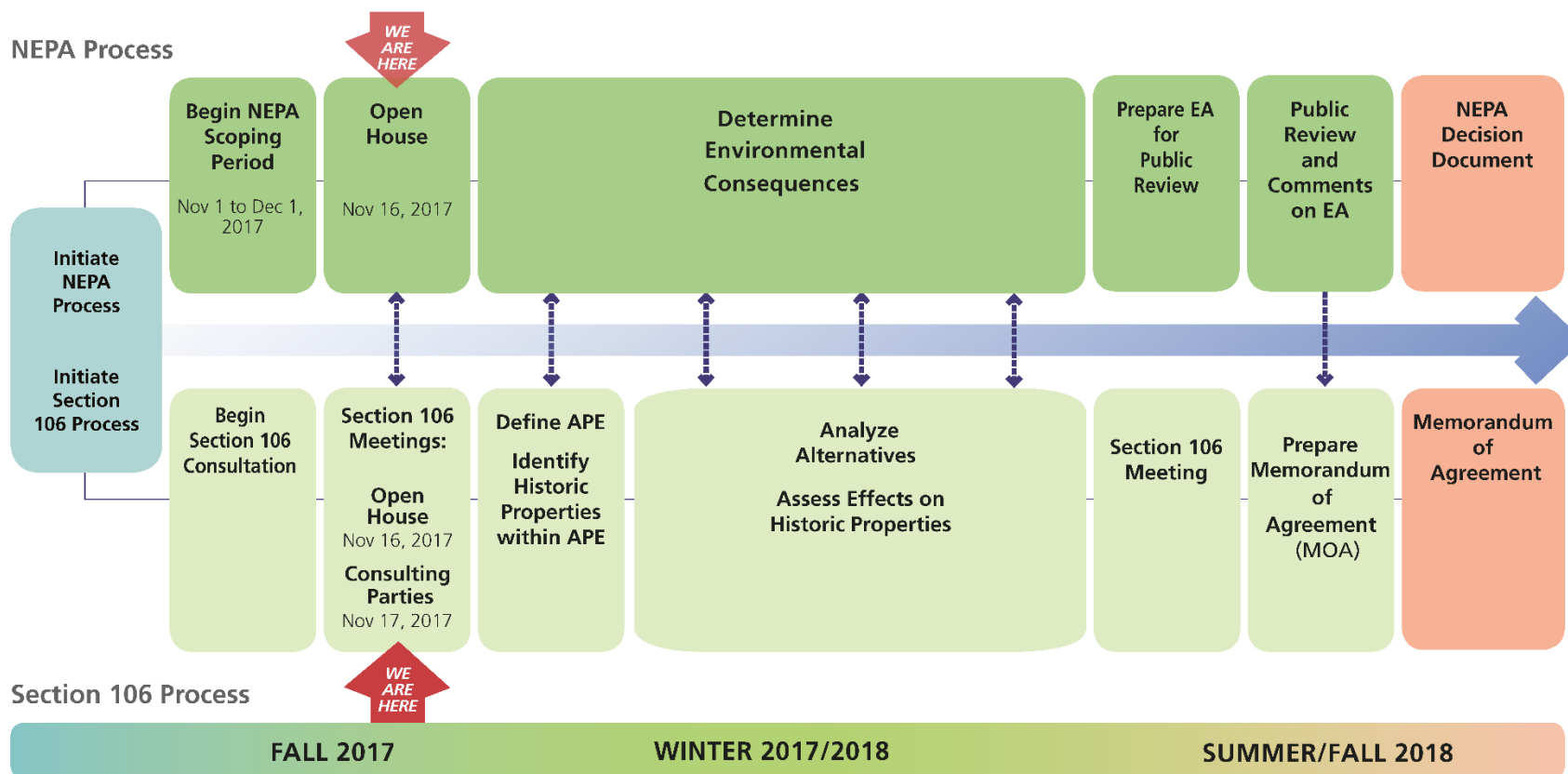


Option 4.3: Accessible Parking Spaces at Kiosk Location





NEPA AND SECTION 106 PROCESSES





Questions? Comments?

