



Dear Friends,

This document supplements the recently released Everglades National Park General Management Plan (GMP) Preliminary Alternatives Newsletter and is being sent to you for two reasons.

First, the enclosed maps serve to correct and clarify options in Alternatives B and C for two areas of the park, Northeast Florida Bay and Everglades City/Chokoloskee. Please use these maps instead of the maps shown on pages 6 and 8 of the Newsletter. I apologize for concerns that were created by the incorrect maps contained in the Newsletter and trust that the enclosed maps for Alternatives B and C accurately reflect options that were suggested in the planning process for this GMP.

Second, we are extending the public comment period from 45 days to 75 days. The new closing date for submitting comments is Tuesday, July 31, 2007. This extension should provide additional time to carefully review the new information enclosed and other details of the preliminary alternatives. The various ways you can obtain the newsletter, complete the comment form, and submit your comments are described in this supplement.

I want to emphasize that we are at the preliminary alternatives stage of the GMP process; many options for managing the park that have been suggested since initiation of the GMP have been incorporated into these alternatives. The park's primary interest at this point in time is to obtain your recommendations and feedback on the concepts and ideas that have been incorporated into the preliminary alternatives. Your comments will be carefully considered by park staff and used to reevaluate and revise the preliminary alternatives and, as appropriate, develop new alternatives for inclusion in the upcoming draft GMP/Environmental Impact Statement that will also be available for public review and comment.

We hope the corrected information enclosed and the extended comment period will enhance your review of the preliminary alternatives. We look forward to seeing you at the upcoming workshops and/or receiving your comments.

Sincerely,

A handwritten signature in dark ink, appearing to read "Dan B. Kimball". The signature is written in a cursive, flowing style.

**Dan B. Kimball
Superintendent**



Legend

- Primary Roads
- Wilderness Waterway and other existing paddling trails
- New Wilderness Waterway Sections
- East Everglades Expansion Area
- Tree Island with Camp (blow-up map)
- ▲ Existing Campsite
- ▲▲▲ One or more campsites proposed in this area
- ✱ Airboat operations
- ✱ Existing Visitor Facility
- ✱ Proposed or expanded Visitor Facility

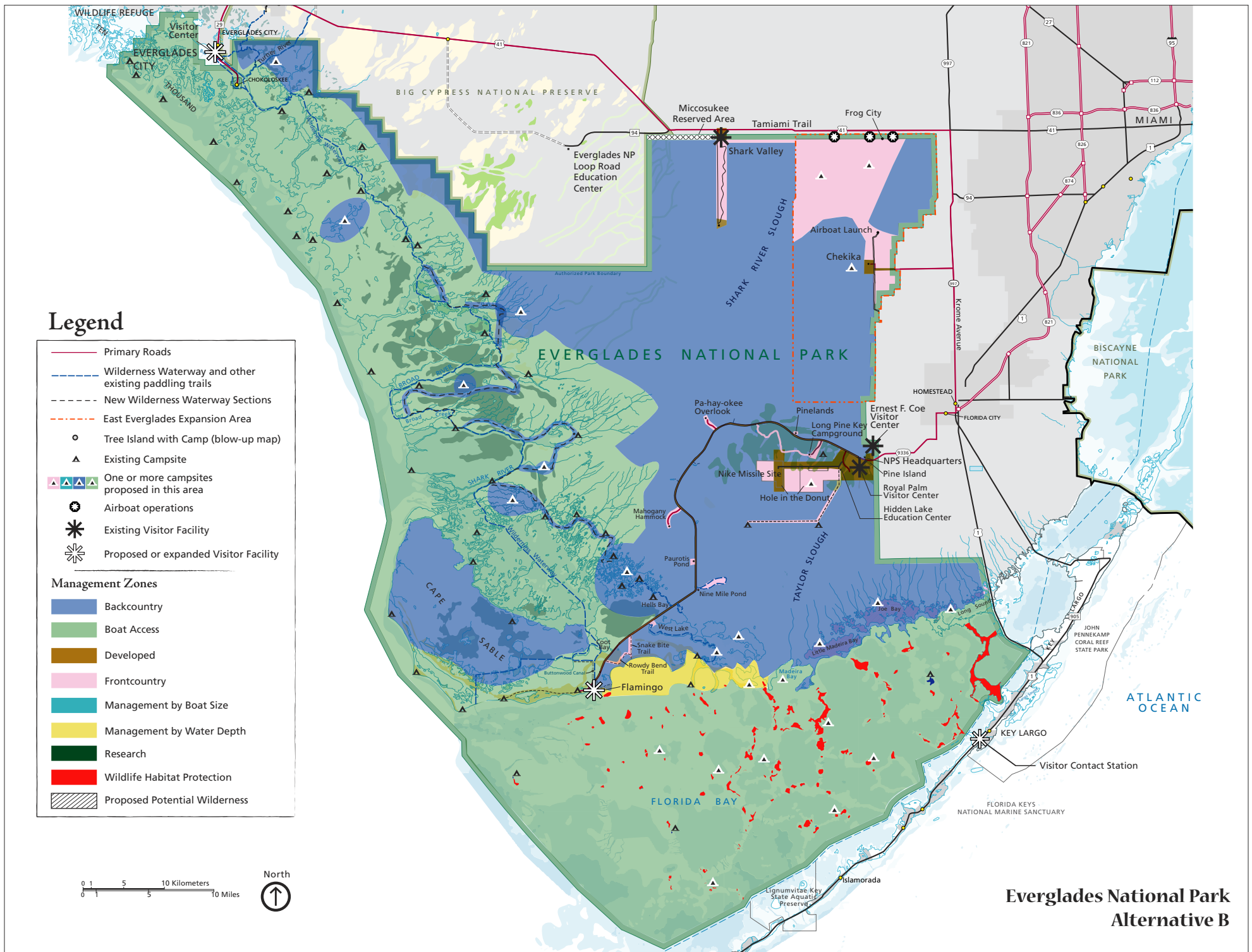
Management Zones

- Backcountry
- Boat Access
- Developed
- Frontcountry
- Management by Boat Size
- Management by Water Depth
- Research
- Wildlife Habitat Protection
- Proposed Potential Wilderness

0 1 5 10 Kilometers
0 1 5 10 Miles



**Everglades National Park
Alternative B**



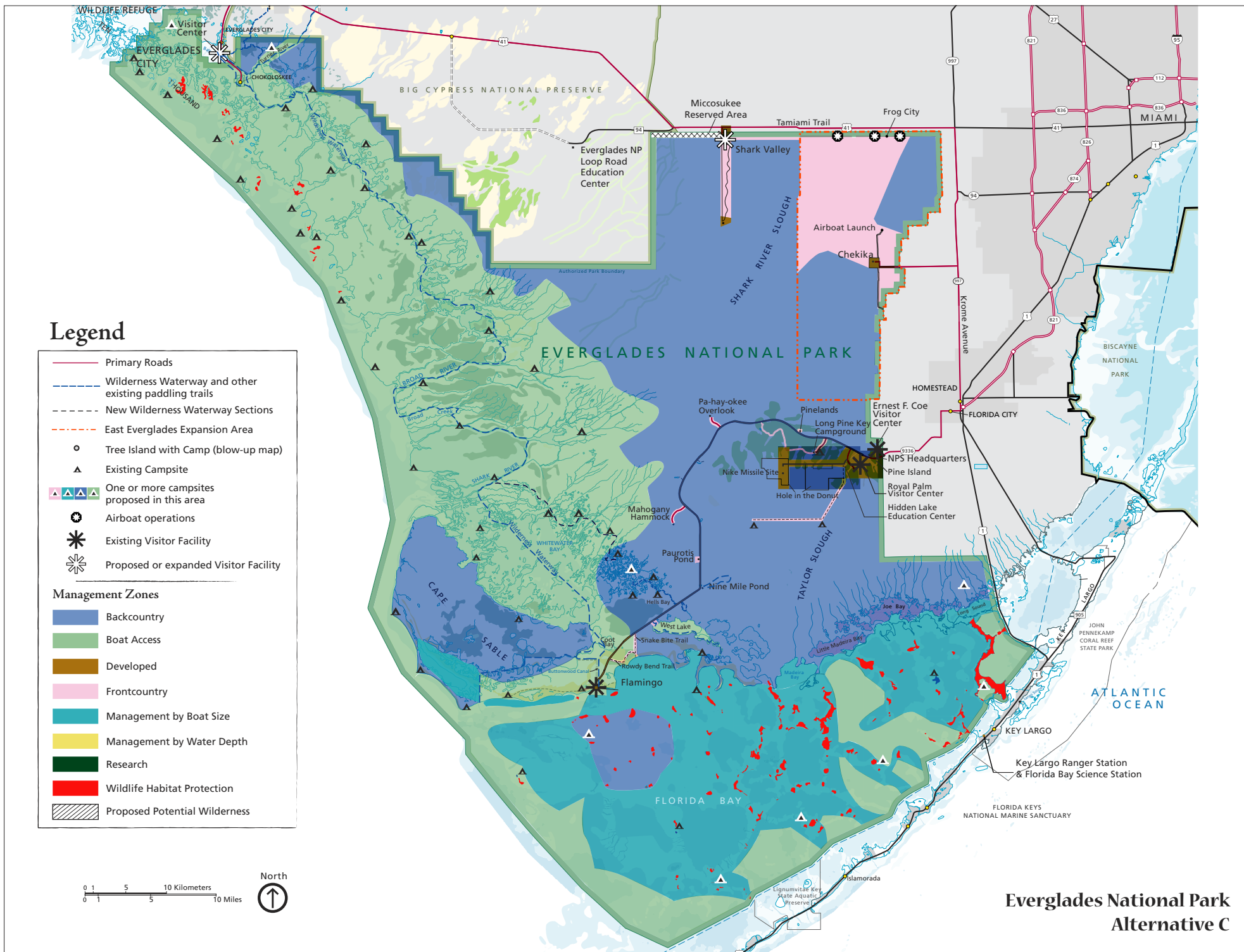
Legend

- Primary Roads
- Wilderness Waterway and other existing paddling trails
- New Wilderness Waterway Sections
- East Everglades Expansion Area
- Tree Island with Camp (blow-up map)
- ▲ Existing Campsite
- ▲▲▲ One or more campsites proposed in this area
- ✱ Airboat operations
- ✱ Existing Visitor Facility
- ✱ Proposed or expanded Visitor Facility

Management Zones

- Backcountry
- Boat Access
- Developed
- Frontcountry
- Management by Boat Size
- Management by Water Depth
- Research
- Wildlife Habitat Protection
- Proposed Potential Wilderness

0 1 5 10 Kilometers
0 1 5 10 Miles



**Everglades National Park
Alternative C**

UNITED STATES DEPARTMENT OF THE INTERIOR
NATIONAL PARK SERVICE
DENVER SERVICE CENTER – PAT KENNEY, DSC-P
12795 WEST ALAMEDA PARKWAY
P.O. Box 25287
DENVER, CO. 80225-0287

OFFICIAL BUSINESS
PENALTY FOR PRIVATE USE \$300



FIRST-CLASS MAIL
POSTAGE & FEES PAID
NATIONAL PARK SERVICE
PERMIT NO. G-83

To learn about the project and submit comments

- Visit the NPS Planning website: <http://parkplanning.nps.gov> to learn more about the project, view or download the newsletter and comment form, and submit comments via the internet. Simply select “Everglades National Park” from the drop down box and then follow the link for the General Management Plan/East Everglades Wilderness Study.
- Submit written comments to: National Park Service, Everglades Planning Team, P.O. Box 25287, Denver, CO 80225-0287.
- To receive a copy of the GMP – Preliminary Alternatives newsletter and comment form by mail, please call the park at 305-242-7700. If you are prompted by the voicemail system, press 2 at the 1st prompt and press 5 at the second prompt to leave your mailing address information.

