



Welcome

Public Meeting #1

**Shepherd Parkway (Reservation #421)
Concept Plan**



Public Meeting #1

- **The purpose of this meeting is to provide the public with an opportunity to share their vision for Shepherd Parkway and identify any issues, concerns, and ideas.**
- **After hearing from the public, the National Park Service (NPS) will develop an initial range of concepts for Shepherd Parkway. The NPS will share these concepts with the public and provide further opportunities for feedback.**



Plan Goals

The key goals of the Development Concept Plan for Shepherd Parkway are to:

- Enrich existing and explore new uses and programming opportunities
- Improve the health of Shepherd Parkway, ecologically and for the surrounding community
- Address safety and maintenance concerns



Shepherd Parkway near 2nd Street looking north



Parkland looking west



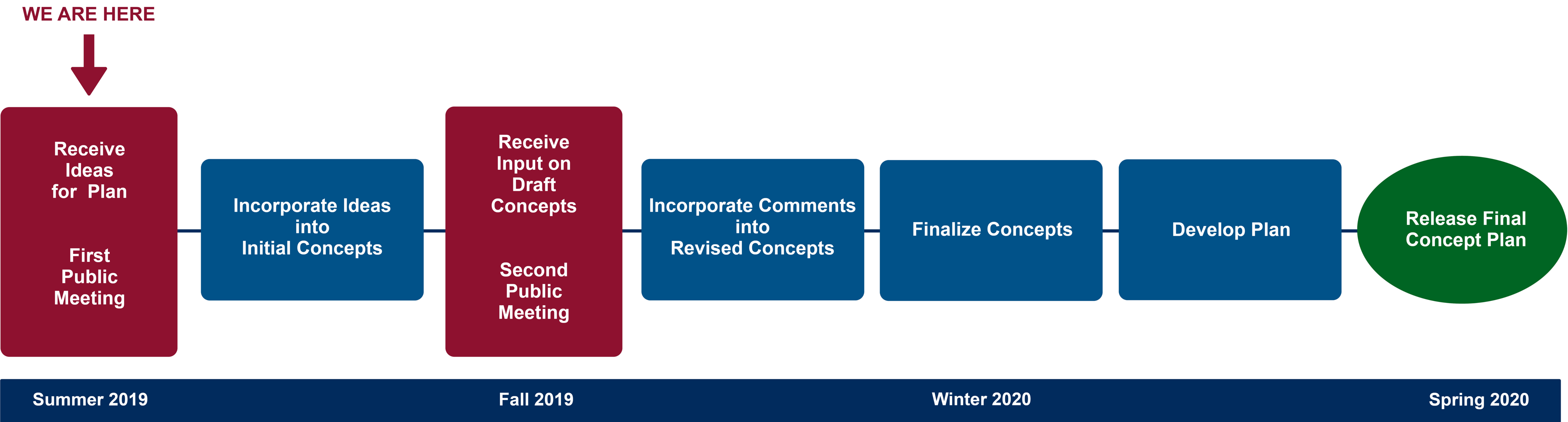
*Shepherd Parkway near 2nd Street
looking west towards the Potomac River*



Fort Greble



Project Timeline





Context Map

- Shepherd Parkway is bordered by I-295 to the west and developed areas to the east
- Multiple trails connect (or are planned to connect) to the vicinity
- Adjacent neighborhoods have multiple access points to Shepherd Parkway
- Two U.S. Park Police facilities are located within Shepherd Parkway





Share Your Ideas: Shepherd Parkway open spaces

Please reply in your written or electronic comments.

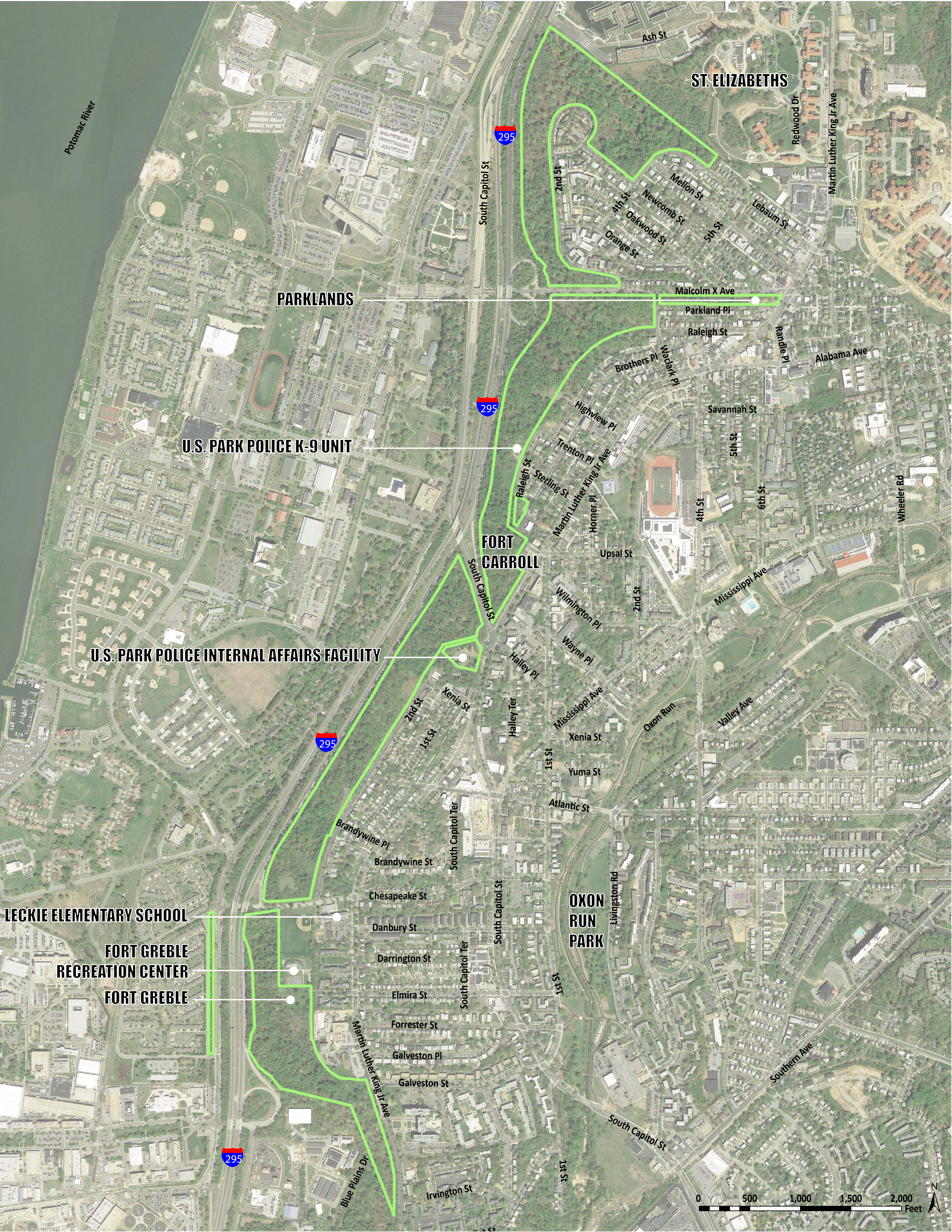
How and where do you currently use the open spaces of Shepherd Parkway?

How do you currently access portions of Shepherd Parkway?

Where would you like to see new connections to and within the open spaces of Shepherd Parkway?

Are you comfortable walking in the wooded areas?

How would you prevent dumping and litter?





Share Your Ideas:

Northern boundary to Malcolm X Avenue

Please reply in your written or electronic comments.

How do you currently use this area? Where?

Are you comfortable walking in the wooded areas?

How should connections be made to Malcolm X Avenue?



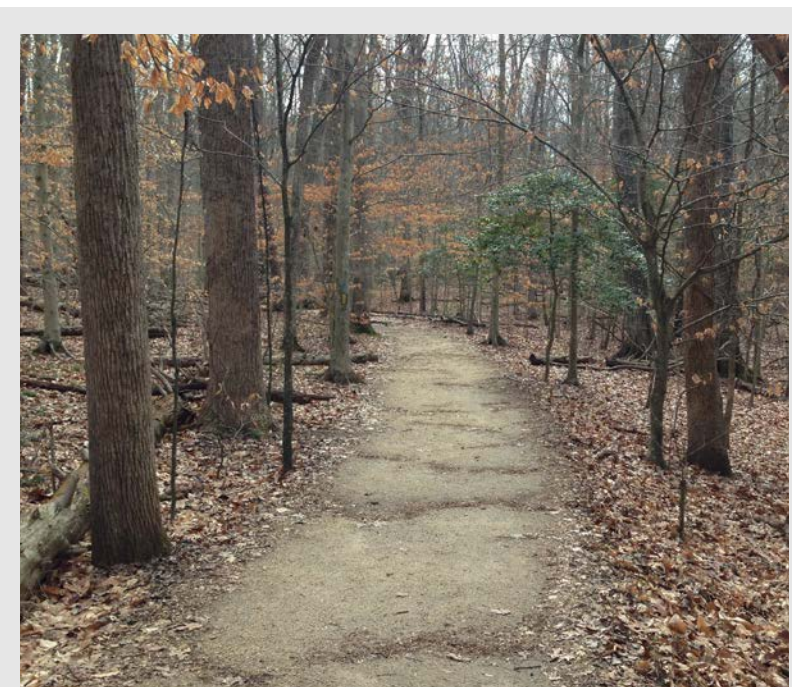


Share Your Ideas:

Northern boundary to Malcolm X Avenue

Please reply in your written or electronic comments.

How would you like to use this area in the future?



Walk/hike on trails within the wooded areas



Walk/hike on trails along the edges (near the street)



Picnic¹



View nature/wildlife²



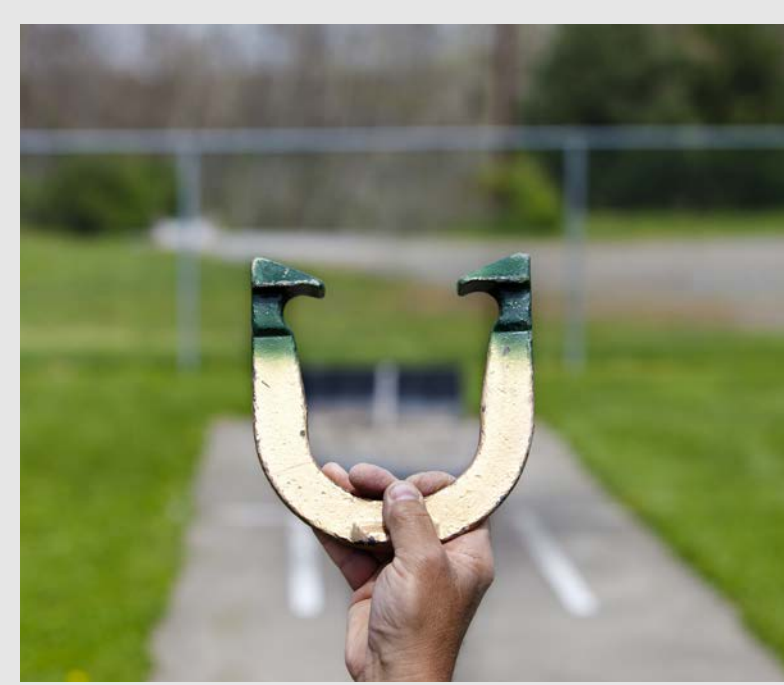
Enjoy views and vistas



Go on interpretive nature or history walks with a NPS ranger



Volunteer in park beautification projects



Throw horseshoes³



Your Suggestion Here



1 Benjamin D. Esham/Wikimedia Commons [CC BY-SA 3.0 us (<https://creativecommons.org/licenses/by-sa/3.0/us/deed.en>)], https://upload.wikimedia.org/wikipedia/commons/4/41/Picnic_table.jpg
2 CK_Images/Shutterstock.com
3 mary981/Shutterstock.com



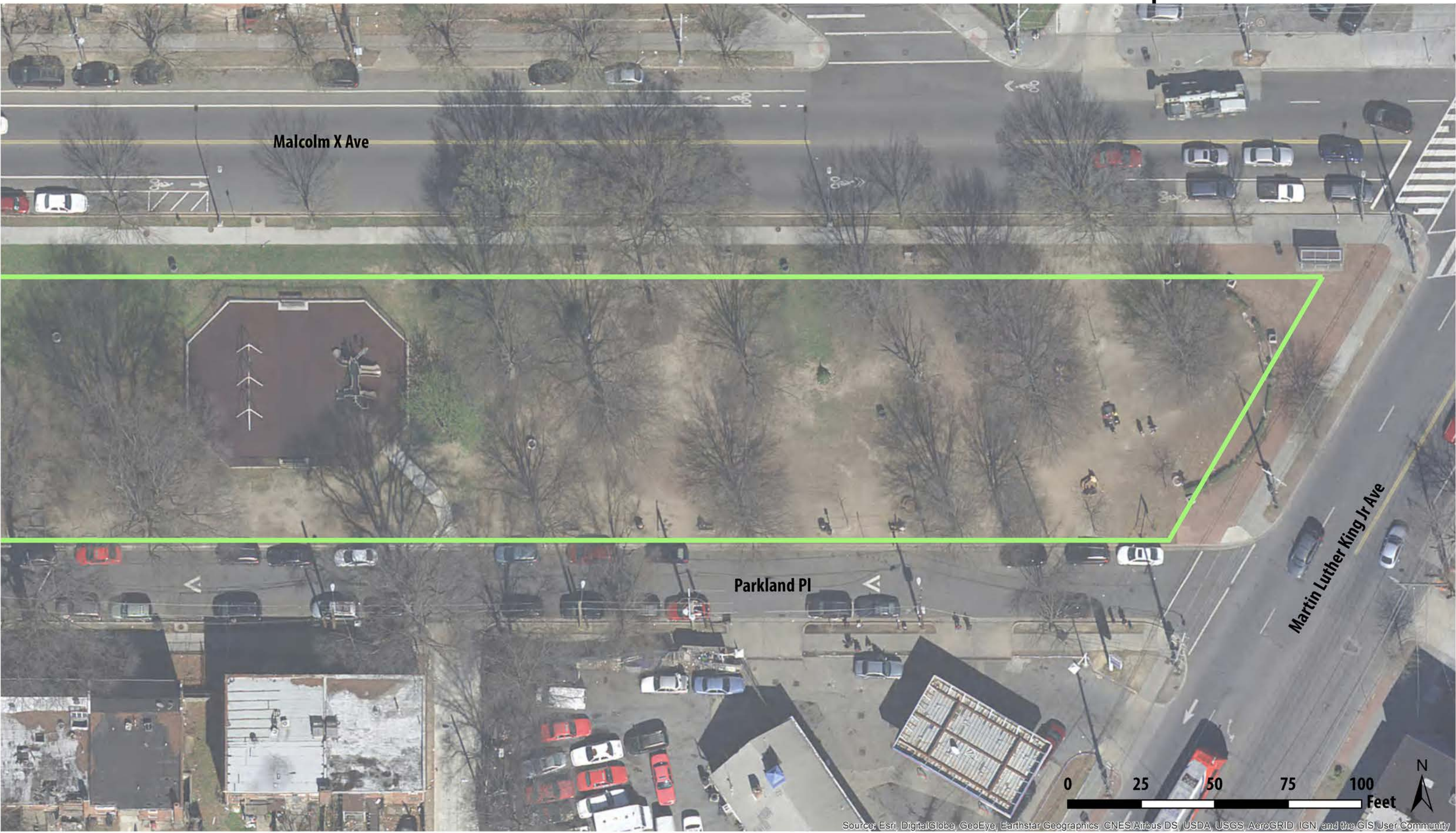
Share Your Ideas: Parkland

Please reply in your written or electronic comments.

How do you currently use this area?

How would you prevent dumping and litter in this area?

How would you like to use this area in the future?





Share Your Ideas: Parkland

Please reply in your written or electronic comments.

How would you like to use this area in the future?



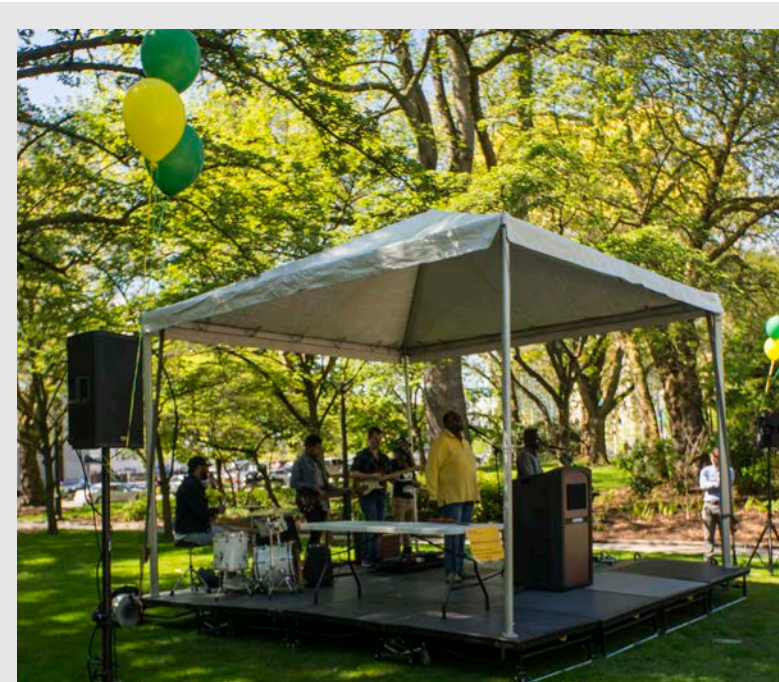
Host
gatherings/events



Picnic¹



Watch a movie



Attend a concert²



Play sports³



Play games
(cards, chess, etc.)⁴



Play music⁵



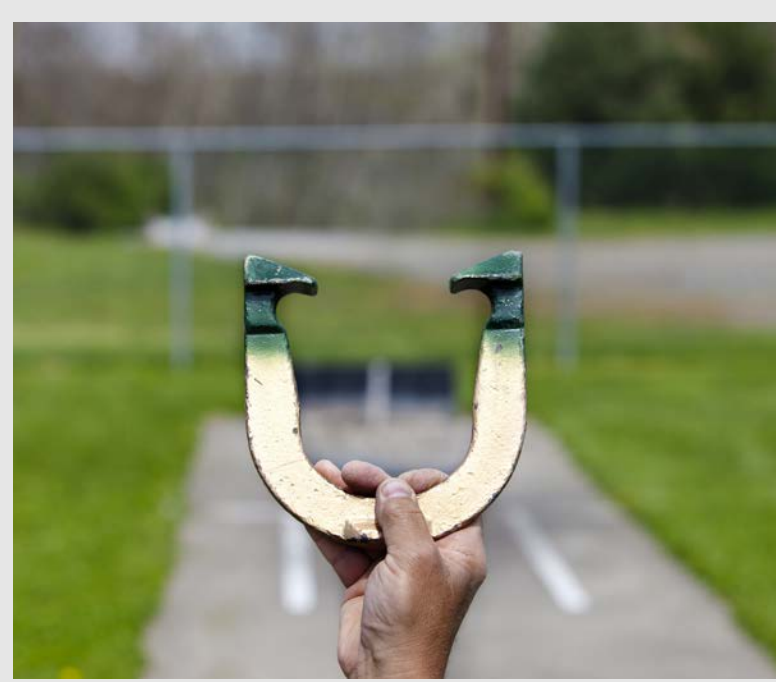
Learn about
available services⁶



Expand playground



Volunteer in park
beautification
projects



Throw
horseshoes⁷



Your
Suggestion
Here



1 Benjamin D. Esham/Wikimedia Commons [CC BY-SA 3.0 us (<https://creativecommons.org/licenses/by-sa/3.0/us/deed.en>)], https://upload.wikimedia.org/wikipedia/commons/4/41/Picnic_table.jpg
2 Setting up for the big event, Denny Park Opening Celebration May 6, 2017. Photo by TIA International Photography, <https://www.flickr.com/photos/seattleparks/34496495926>
3 Kick Ball Practice. Photo by Eli Christman, https://www.flickr.com/photos/gammaman/90557654404_22a.Upper.MeridianHill.WDC.21June2015. Photo by Elvert Barnes, <https://www.flickr.com/photos/perspective/18874202909/>
5 17.DrumCircle.MeridianHillPark.WDC.6July2014. Photo by Elvert Barnes, <https://www.flickr.com/photos/perspective/14604016449/in/photostream/>
6 FEMA/Gina Cortez
7 mary981/Shutterstock.com



Share Your Ideas:

Malcolm X Avenue to South Capitol Street

Please reply in your written or electronic comments.

How do you currently use this area? Where?

How should connections be made to Malcolm X Avenue?

Should the two ends of Raleigh Street connect? If so, how?

Are you comfortable walking in the wooded areas?

Did you know that Fort Carroll was used to secure the Nation’s Capital during the Civil War? Is Fort Carroll important to you? What do you think should be done with Fort Carroll?



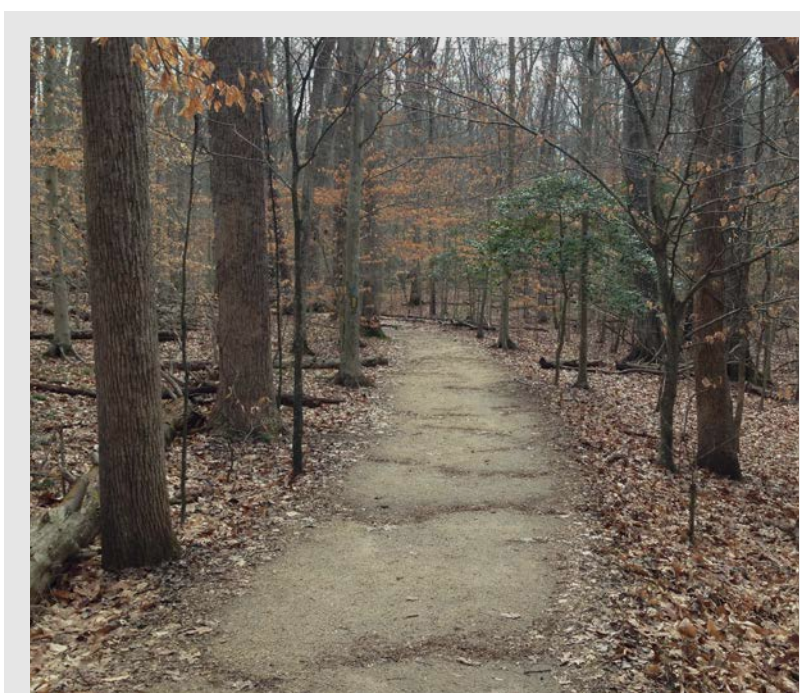


Share Your Ideas:

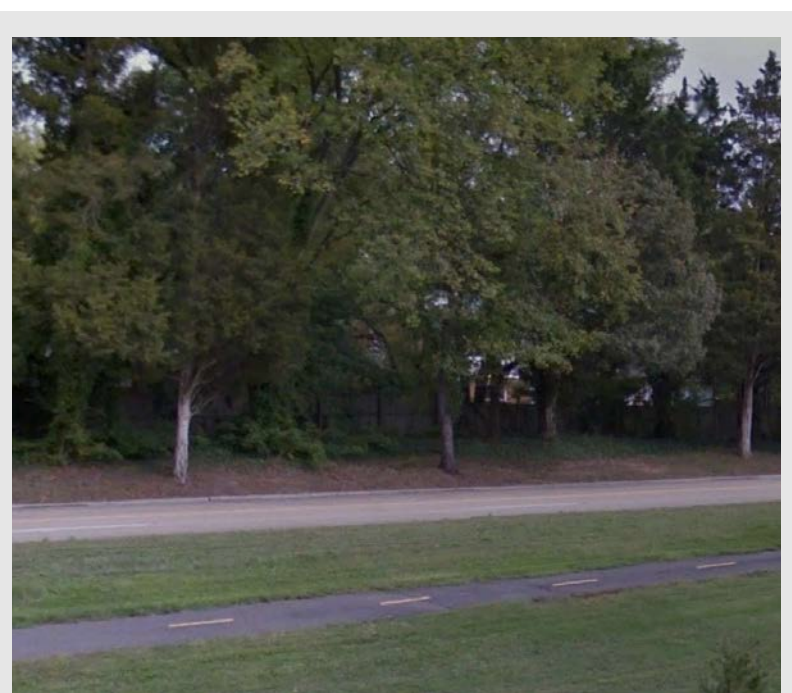
Malcolm X Avenue to South Capitol Street

Please reply in your written or electronic comments.

How would you like to use this area in the future?



Walk/hike on trails within the wooded areas



Walk/hike on trails along the edges (near the street)



Picnic¹



Enjoy views and vistas



Use open play and recreation areas²



View nature/wildlife³



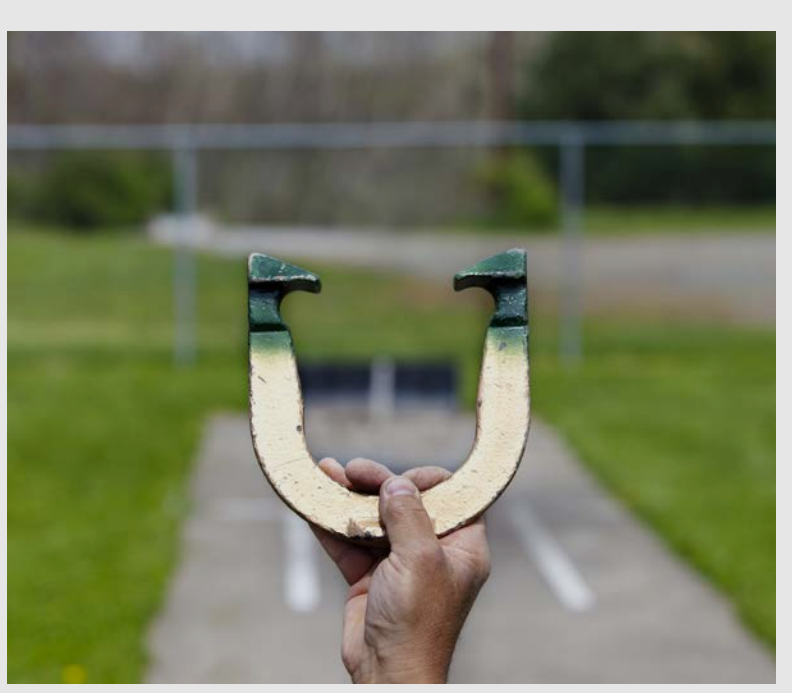
Learn about history



Go on interpretive nature or history walks with a NPS ranger



Volunteer in park beautification projects



Throw horseshoes⁴



Tend a community garden⁵



Your Suggestion Here



1 Benjamin D. Esham/Wikimedia Commons [CC BY-SA 3.0 us (<https://creativecommons.org/licenses/by-sa/3.0/us/deed.en>)], https://upload.wikimedia.org/wikipedia/commons/4/41/Picnic_table.jpg
2 Varina C/Shutterstock.com
3 CK_Images/Shutterstock.com
4 mary981/Shutterstock.com
5 Alison Hancock/Shutterstock.com



Share Your Ideas:

South Capitol Street to the southern boundary

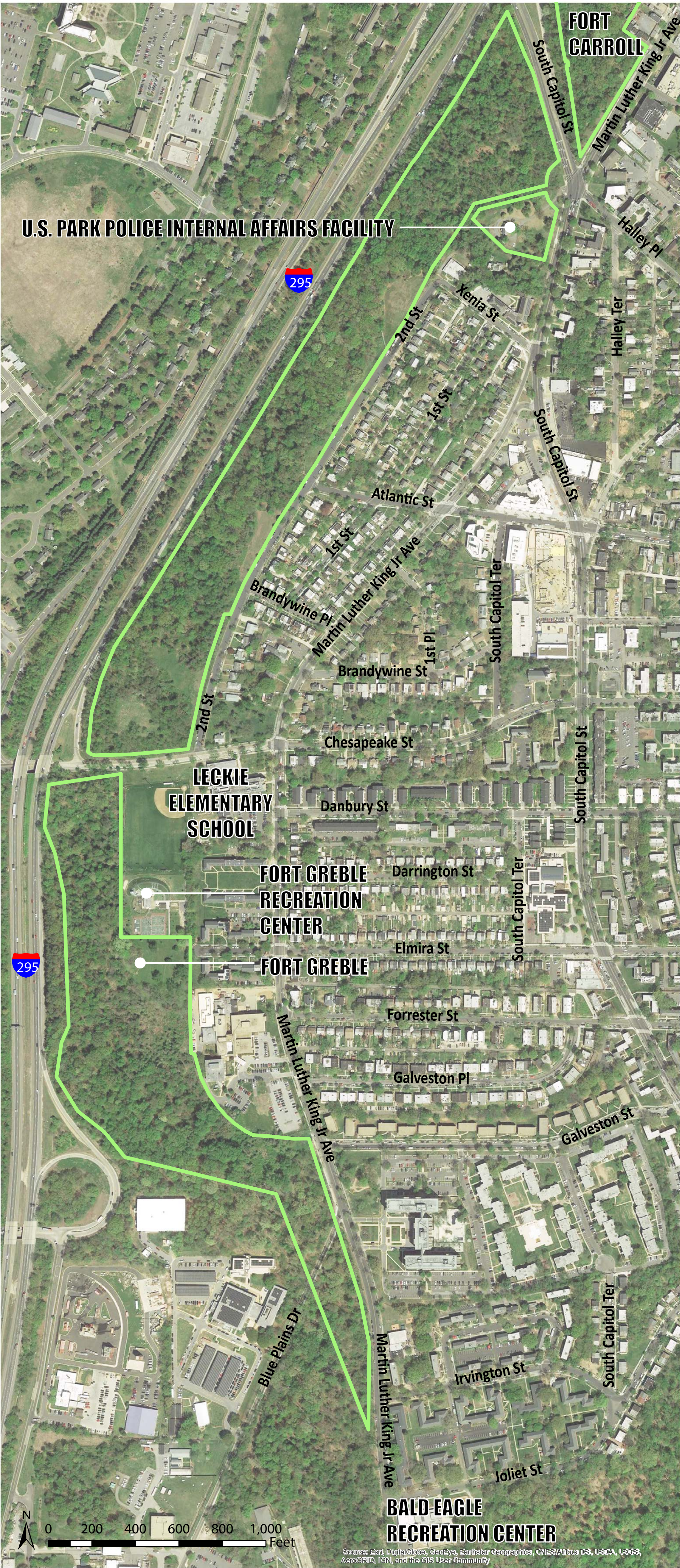
Please reply in your written or electronic comments.

How do you currently use this area? Where?

How would you feel about opening wooded areas up for future use?

Are you comfortable walking in the wooded areas?

Did you know that Fort Greble was used to secure the Nation’s Capital during the Civil War? Is Fort Greble important to you? What do you think should be done with Fort Greble?

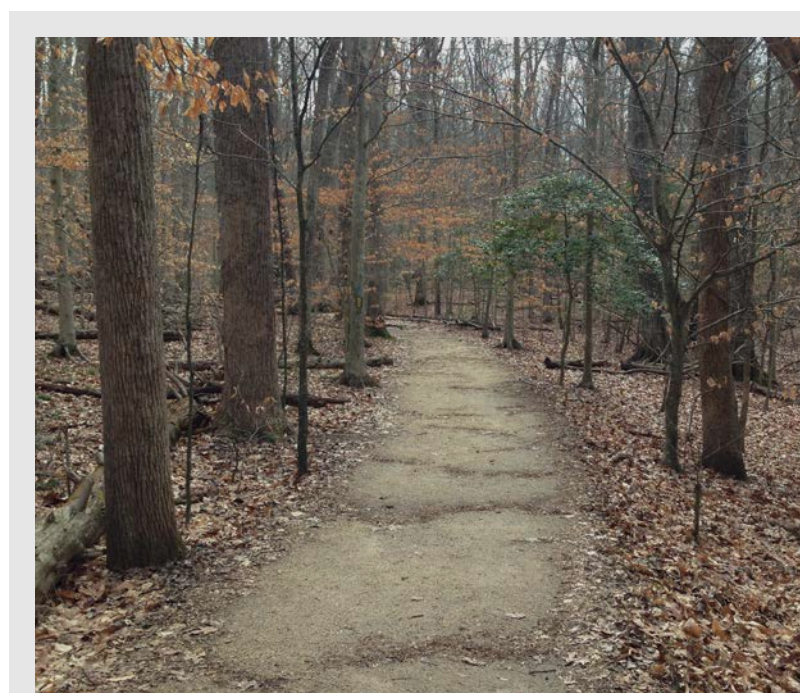




Share Your Ideas: South Capitol Street to the southern boundary

Please reply in your written or electronic comments.

How would you like to use this area in the future?



Walk/hike on trails within the wooded areas



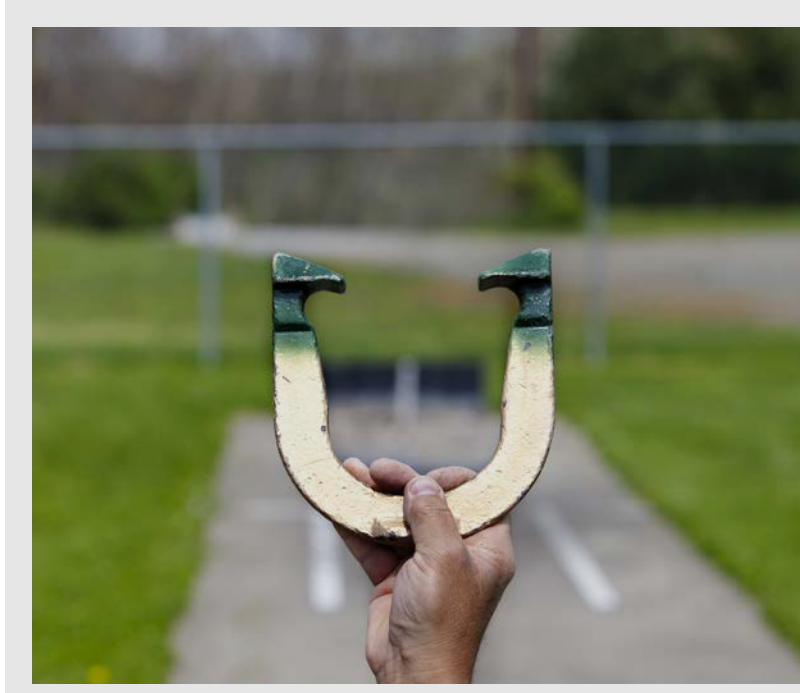
Walk/hike on trails along the edges (near the street)



Picnic¹



Enjoy views and vistas



Throw horseshoes²



Use open play and recreation areas³



View nature/wildlife⁴



Learn about history



Go on interpretive nature or history walks with a NPS ranger



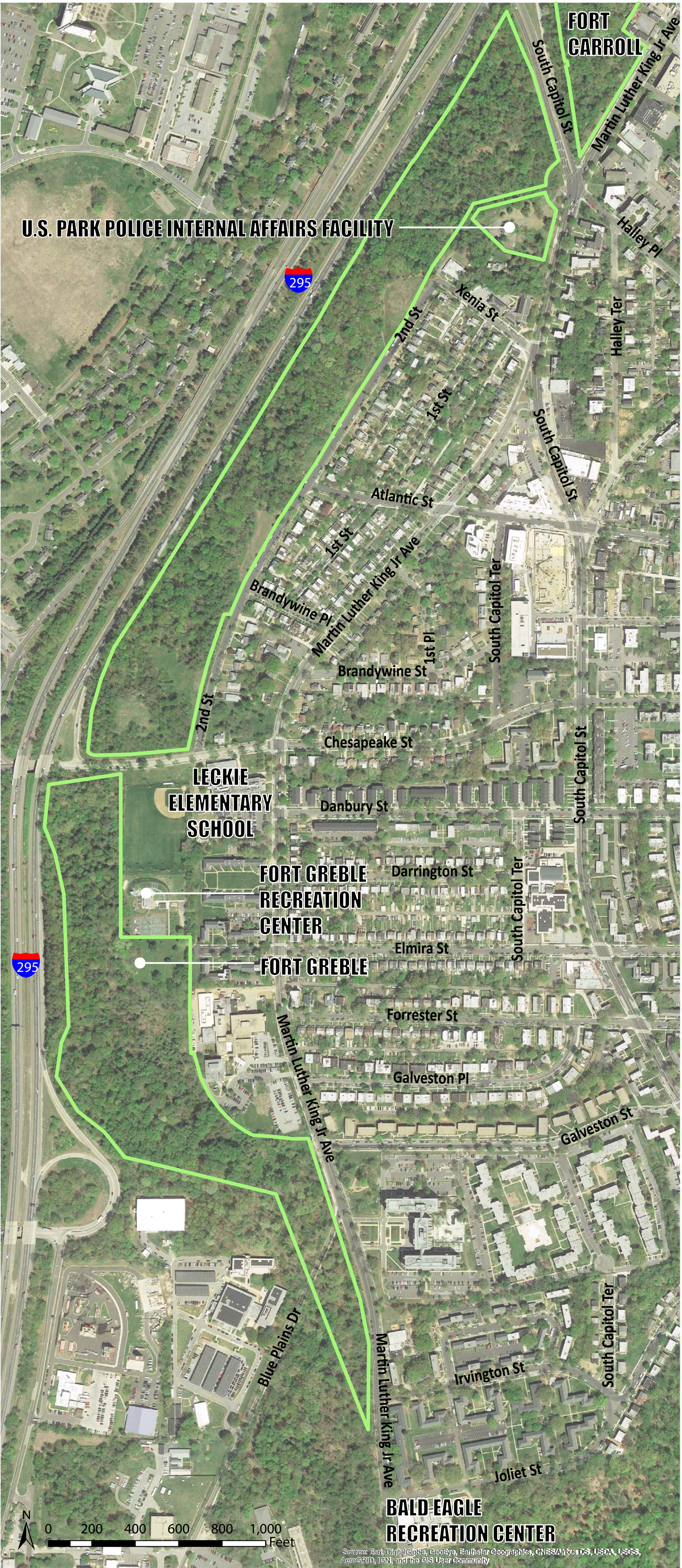
Volunteer in park beautification projects



Tend a community garden⁵



Your Suggestion Here



1 Benjamin D. Esham/Wikimedia Commons [CC BY-SA 3.0 us (<https://creativecommons.org/licenses/by-sa/3.0/us/deed.en>)], https://upload.wikimedia.org/wikipedia/commons/4/41/Picnic_table.jpg
2 mary981/Shutterstock.com
3 Varina C/Shutterstock.com
4 CK_Images/Shutterstock.com
5 Alison Hancock/Shutterstock.com



How Can You Submit Comments?

Please identify any issues, concerns, or ideas you may have regarding the proposed project

During this Meeting

- Fill out a comment form

After this Meeting

- **Online:** Submit a comment form online by **July 26, 2019** at http://parkplanning.nps.gov/shepherdpkwy_dcp
- **Written comments can be mailed to:**

Tara Morrison
Superintendent
Attn: Shepherd Parkway Concept Plan
National Park Service
National Capital Parks-East
1900 Anacostia Drive SE
Washington, DC 20020
- **Mailed comments** must be postmarked by **July 26, 2019** to receive consideration