

Shark Valley Site Plan Everglades National Park (EVER)

Newsletter, January 2021

National Park Service
U.S. Department of Interior



The National Park Service (NPS) is preparing a Site Plan for Shark Valley at Everglades National Park. As one of the best locations in the park to experience sawgrass marshes and wildlife, Shark Valley is a popular visitor destination particularly during peak visitation months. The purpose of this project is to enhance the visitor experience, safety, and park operations at Shark Valley as envisioned in the park's 2015 General Management Plan (GMP).

The plan will address issues due to unsafe parking conditions, flooding at the Entrance Road and on portions of the Tram Road, and improvements to the administration and operations complex. It will also include installation of a canoe/kayak launch on the Old Tamiami Trail canal, and two shaded rest stops on the Tram Road to improve the visitor experience.

We invite you to attend a virtual public open house and to share ideas and questions about the plan during the 30-day public comment period.

Join us for a virtual open house!

Tuesday, February 9, 2021: 1:00 pm – 2:30 pm

Webinar link: <https://us02web.zoom.us/j/85415121334>

Phone: 929-436-2866

Access Code: 85415121334#

Webinar ID: 854 1512 1334

Wednesday, February 10, 2021: 6:30 pm – 8:00 pm

Webinar link: <https://us02web.zoom.us/j/86096392767>

Phone: 301-715-8592

Access Code: 86096392767#

Webinar ID: 860 9639 2767



Development of Alternative Concepts

The alternative concepts were developed to include guidance for Shark Valley outlined in the 2015 GMP and incorporate input from park staff. The alternative concepts will be further detailed in the site plan. We appreciate your interest and input on the concept alternatives for this special area.

Concept A - No Action

- Maintains current conditions including parking capacity (120 spaces) and traffic flow
- No overflow parking would be provided
- Entrance road would not be raised or widened
- Serves as baseline to compare to development concepts



Entrance Road Congestion



Entrance Road Flooding

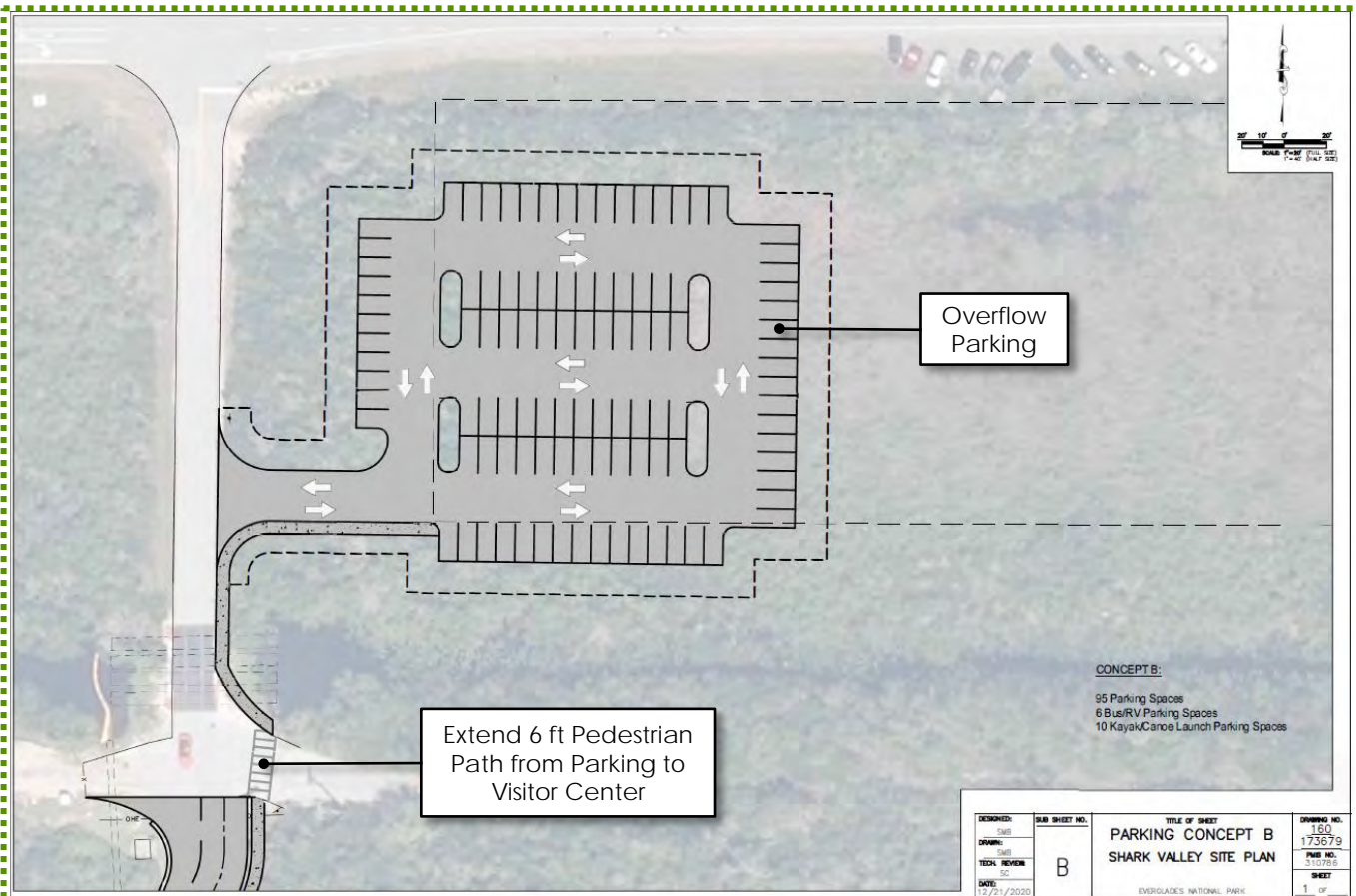
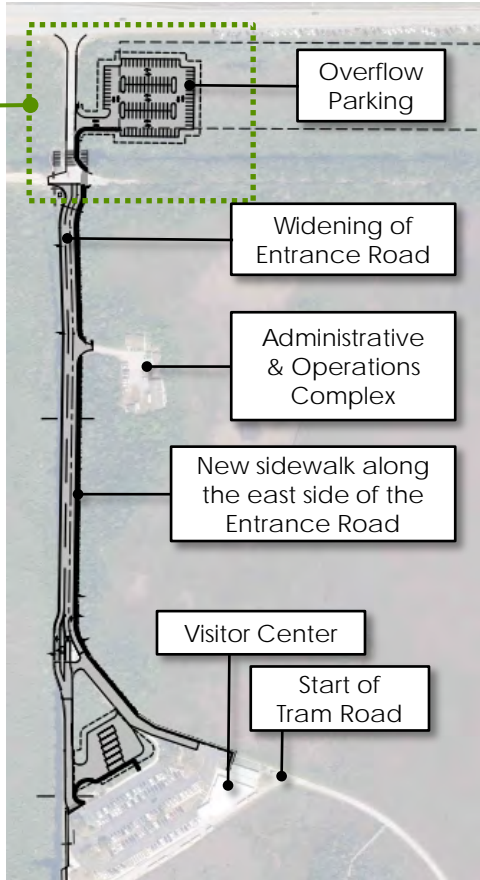


Unsafe Parking on Tamiami Trail

Development of Alternative Concepts

Concept B

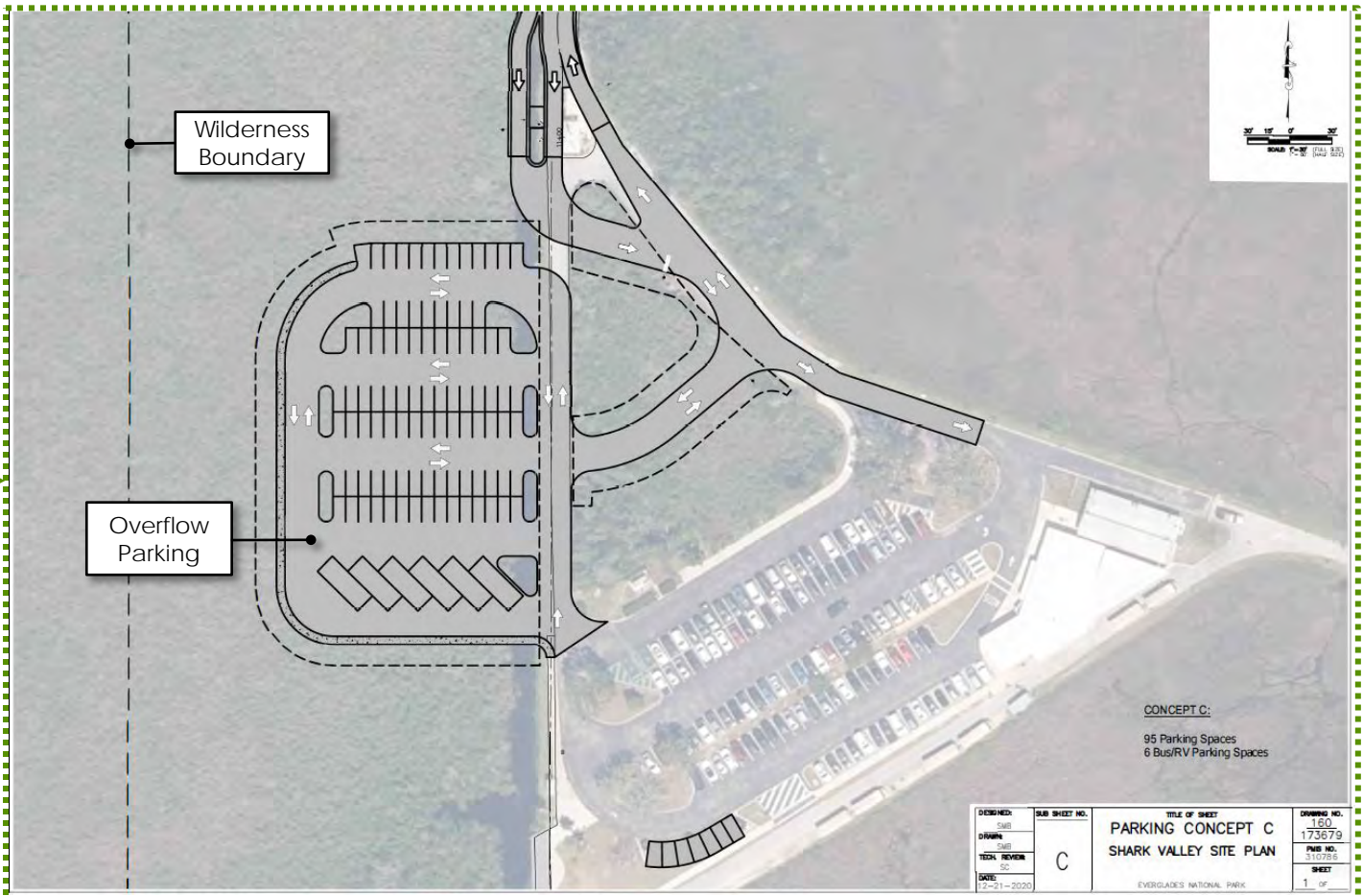
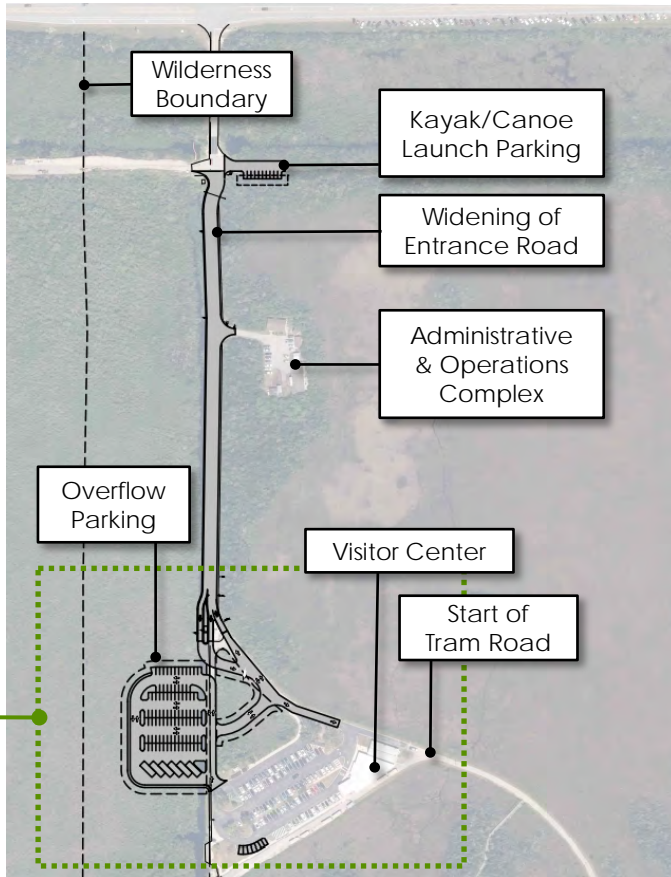
- Provides overflow parking outside the park gate with 105 parking spaces. Sidewalk along entrance road would connect parking overflow to visitor center
- Incorporates 10 parking spaces for canoe and kayak access within the overflow parking area
- Six Bus/RV spaces would be installed in center island of Entrance Road near Visitor Center
- Utilizes parking kiosk (automated fee machine) to allow visitors to pay for park entrance fee at overflow parking area
- Incorporates dynamic/variable message signs for parking conditions updates
- Maintains existing traffic flow within visitor center parking area
- Widens entrance road to three lanes (two inbound and one outbound), raises road to avoid flooding



Development of Alternative Concepts

Concept C

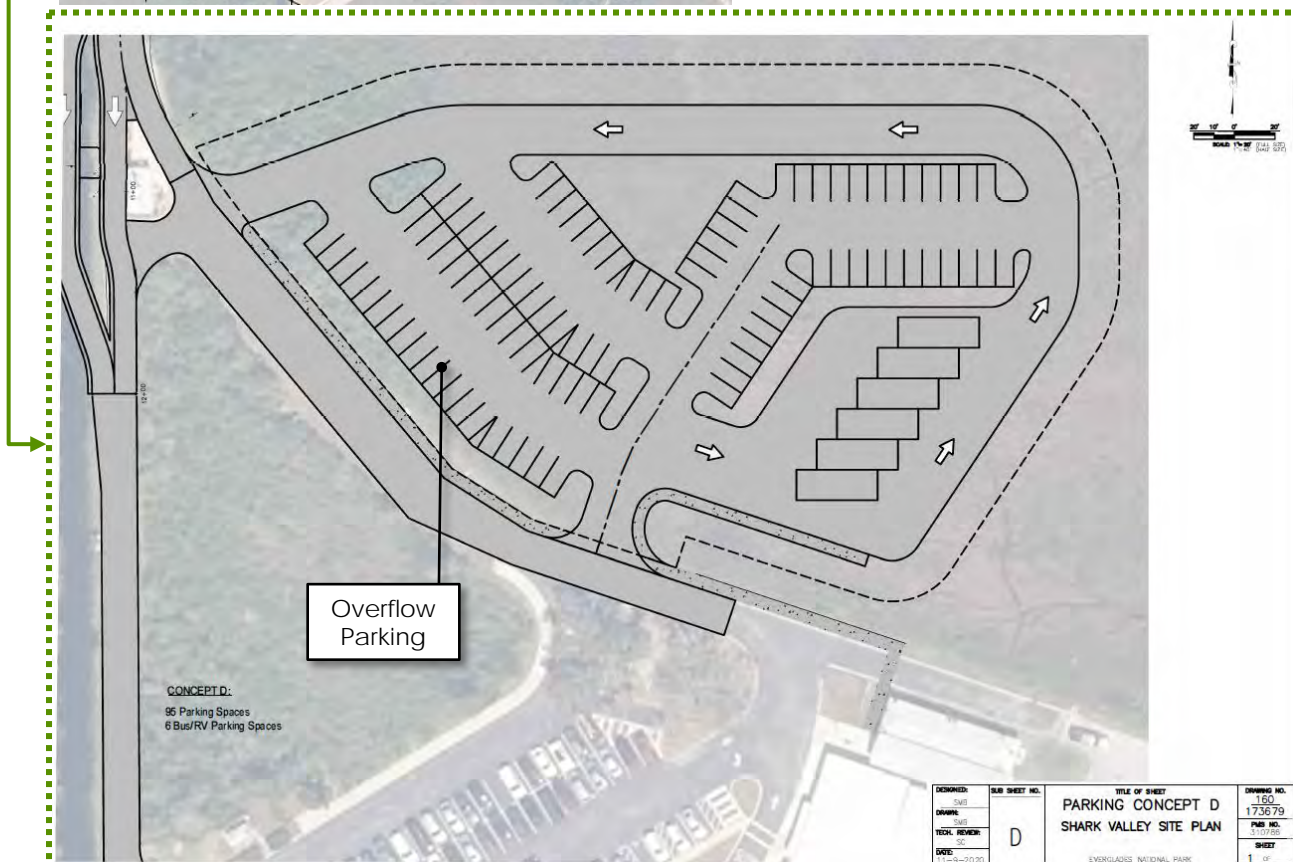
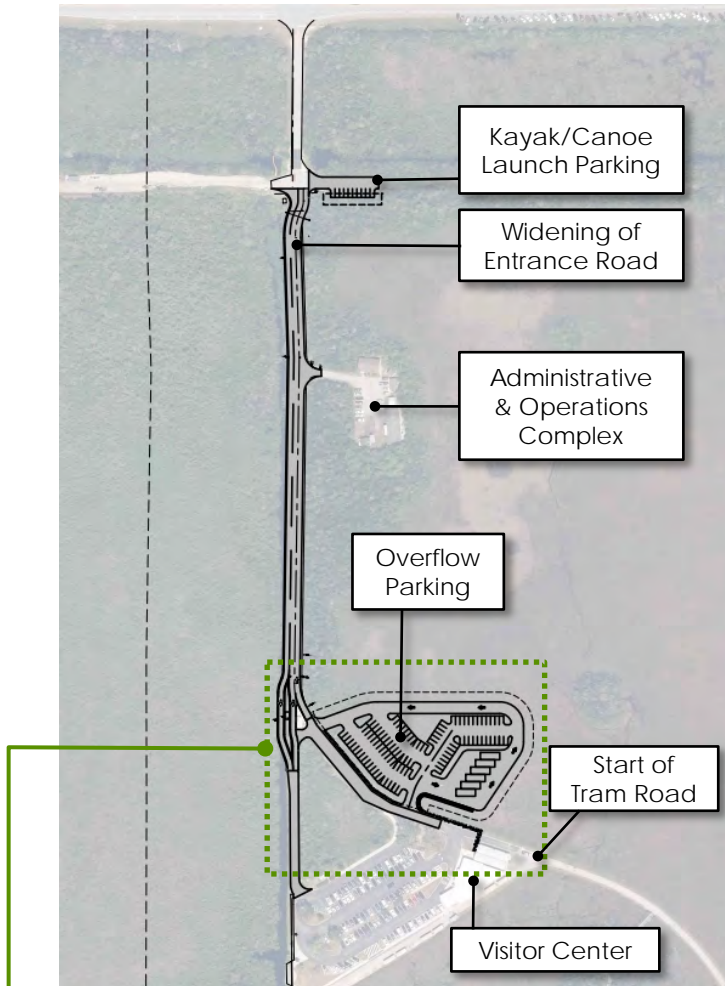
- A total of 105 parking spaces would be added
- Provides overflow parking inside of the park gate, at a short walking distance from visitor center (95 parking spaces and 6 bus/RV parking spaces)
- Provides a small parking lot (10 spaces) east of entrance road to support canoe and kayak access at the Old Tamiami Trail Canal
- Reconfigures traffic flow to provide a more direct approach to the visitor center
- Widens entrance road to three lanes (two inbound and one outbound), raises road to avoid flooding



Development of Alternative Concepts

Concept D

- A total of 105 parking spaces would be added
- Provides overflow parking inside the park gate, east of visitor center (95 parking spaces and 6 Bus/RV parking spaces)
- Provides a small parking lot (10 spaces) east of the entrance road to support canoe and kayak access at the east end of the Old Tamiami Trail Canal
- Maintains existing traffic flow within visitor center parking area
- Widens entrance road to three lanes (two inbound and one outbound), raises road to avoid flooding



You're Invited!

The National Park Service will host two virtual open houses for the public to learn more about this proposal. The purpose of these meetings is to present the preliminary concepts and draft management strategies for Shark Valley, gather comments, and respond to questions. Please join us and share your thoughts on the following questions:

Do you have any ideas, concerns, or questions about the alternative concepts presented in this newsletter?

Do you have any new ideas or changes to the proposed concepts that you think the planning team should consider?

You may provide your comments

- Via the project website at <http://parkplanning.nps.gov/ever>; or
- By writing to: Superintendent, Attn: Shark Valley Site Plan, Everglades National Park, 40001 State Road 9336 Homestead, FL 33034

Please provide comments by **February 28, 2021**.

For further information or if you need accessibility during the virtual public open house, please contact: **Tatiana Marquez at 305-242-7821 or tatiana_marquez@nps.gov**.

Milestone	Targeted Schedule	Opportunities for Public Input
Public Input	January – February 2021	Review preliminary concepts, attend virtual open house, and provide your comments at http://parkplanning.nps.gov/ever
NPS analyze public comments and revise concepts	March 2021	
NPS prepares draft site plan and initiate environmental compliance	Spring 2021	
Public review of site plan/ Environmental Assessment	Summer 2021	Review the plan/environmental assessment and provide your comments at http://parkplanning.nps.gov/ever
Decision document	Summer 2021	See final plan and decision document at http://parkplanning.nps.gov/ever