



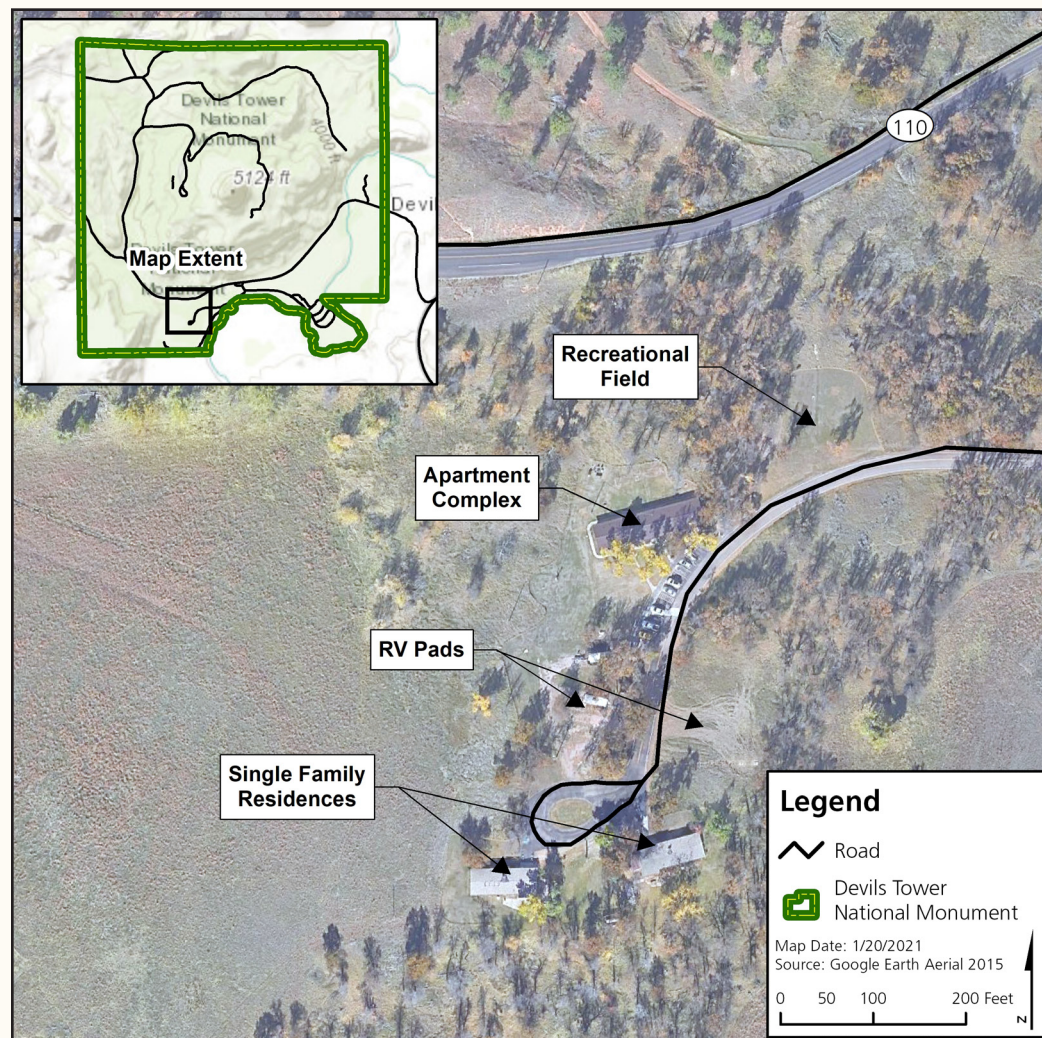
Employee Housing Project Civic Engagement Newsletter • February 2021



Purpose and Need

The National Park Service (NPS) is seeking feedback on a project to upgrade substandard employee housing in the monument. The existing 6-unit, single-story building was built in 1961 as part of the NPS Mission 66 program – an initiative launched to improve facilities by 1966, the 50th anniversary of the National Park Service. Since then, very few upgrades have been made to this facility and it is currently unable to meet park needs. None of the units adhere to physical accessibility standards, and there is no fire suppression system. Additionally, the lack of available housing in surrounding communities and in the monument is substantially impacting workforce recruitment. At a time when the monument is seeing a significant increase in annual visitation, staffing needs are especially critical.

Existing Conditions



Monument Resources

Cultural Resources

- Sacred sites
- Cultural landscapes
- Archeological resources
- Historic structures

Natural Resources

- Vegetation communities - bluestem prairie fields, burr oak (*Quercus macrocarpa*) forests
- Wildlife communities - Federally listed (threatened) northern long-eared bat (*Myotis septentrionalis*)

Housing Development Plan Options

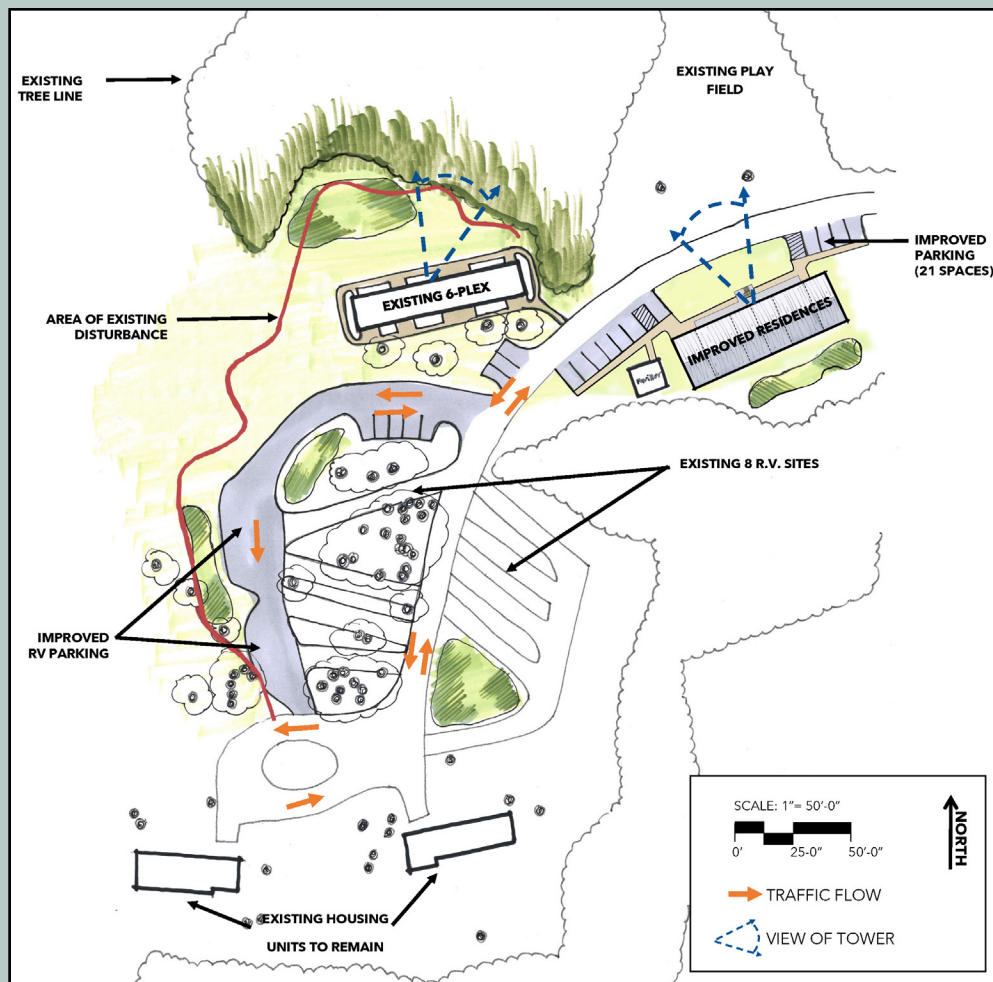
Common Project Elements of the Three Concepts

The following elements would be the same in all housing facility options:

- A new 9-unit, two-story staff housing facility would be added.
 - Code-compliant and energy-efficient facility
 - Ground-level ABAAS accessible units
 - Storage and laundry/shower units
- The existing eight RV sites would be reused and two new pull-through RV sites would be added.
- The existing utilities would be upgraded by expanding the leach field and improving traffic flow and parking in the proposed project area.
- The community gathering area would include a shade pavilion, fire pit, BBQ, paved concrete pad, site furnishing, and utility hookups.

Concept 1: Retain the Existing Housing Facility

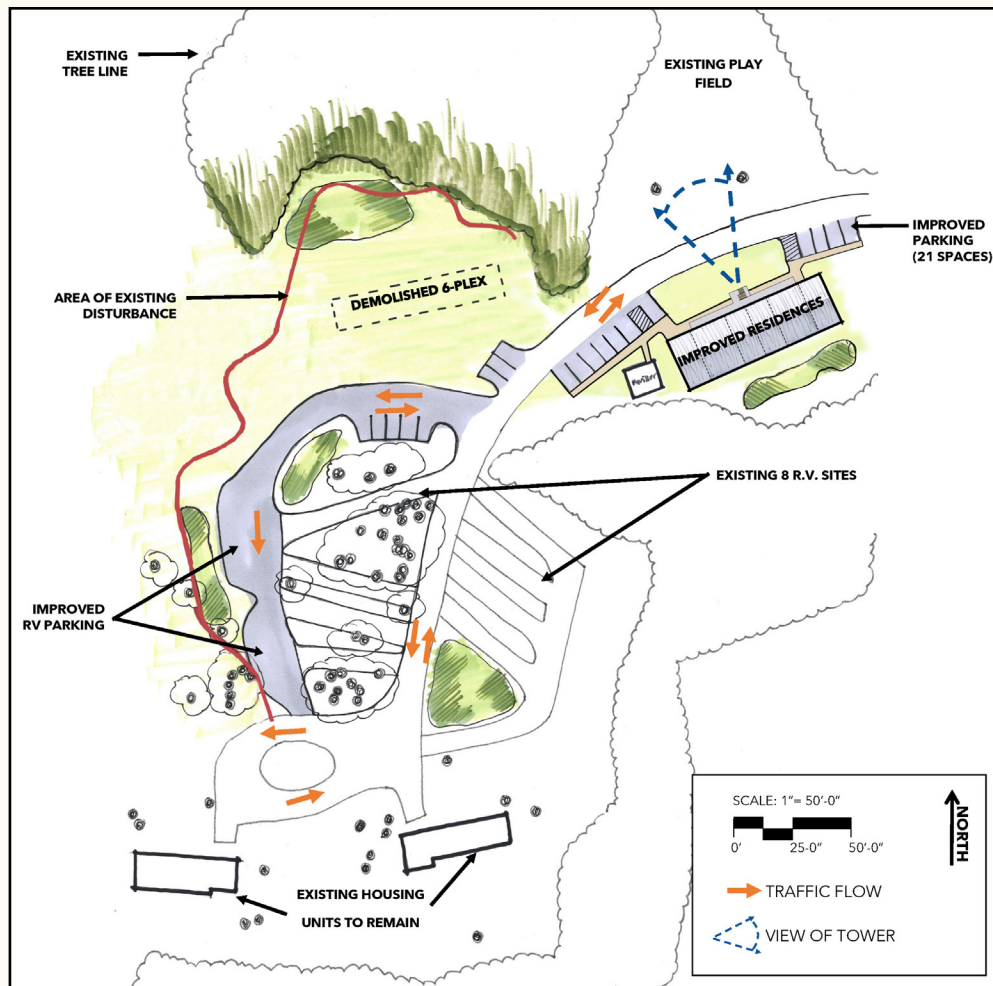
- Retain the existing 6-unit Mission 66 housing facility and add a new 9-unit, two-story staff housing facility.
- The new facility would have a direct clear view of the tower from the front windows.
- The new facility would be separated from the RV parking.
- Approximately 13,000 square feet in new disturbance.



Housing Development Plan Options

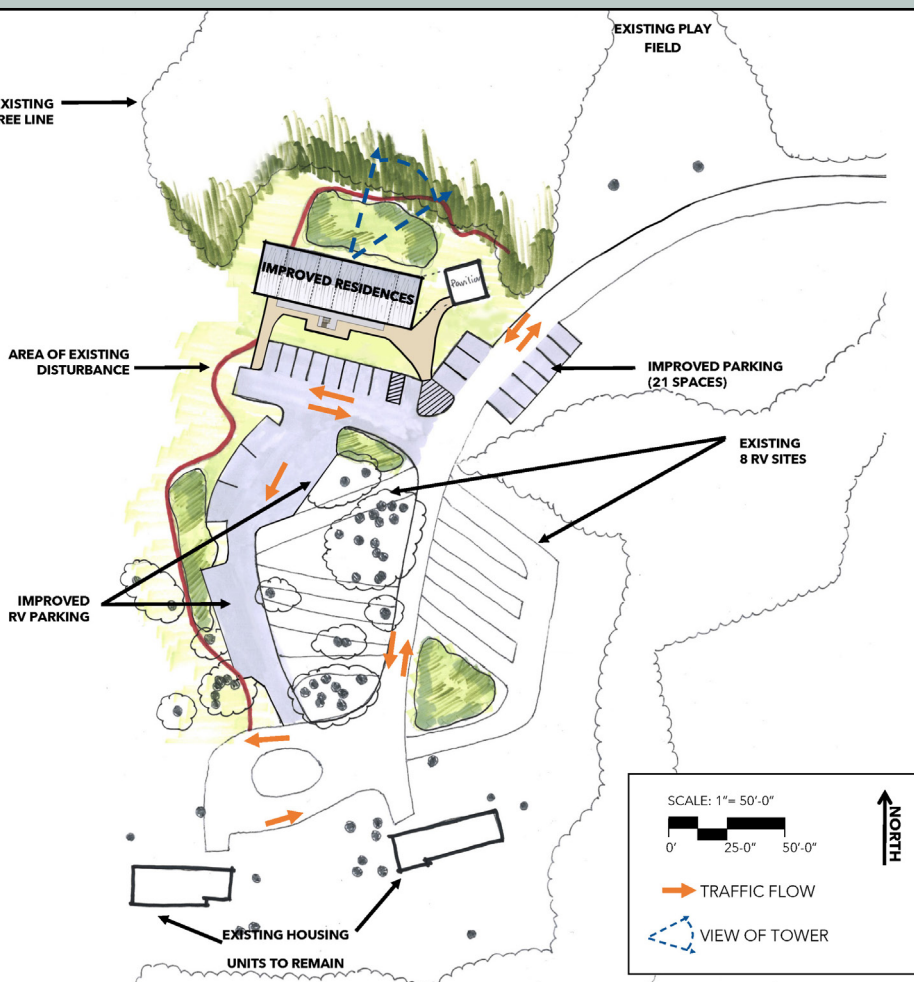
Concept 2: Demolish the Existing Housing Facility

- Demolish the existing 6-unit Mission 66 housing facility and add a new 9-unit, two-story staff housing facility.
- Approximately 13,000 square feet in new disturbance.
- The new facility would have a direct clear view of the tower from the front windows.
- The new facility would be separated from the RV parking.
- An additional open area would be available for future RV parking or recreation area.



Concept 3: Demolish and Replace the Existing Housing Facility

- Demolish the existing 6-unit Mission 66 housing facility and replace it with a new 9-unit, two-story staff housing facility.
- Approximately 2,000 square feet in new disturbance.
- The new facility would have improved direct view of the tower from the rear windows.
- The parking areas would be centralized.





Please Join Us

The National Park Service will be hosting a virtual public meeting to describe details and design options. There will be an opportunity to ask questions following the presentation.

Date: March 4, 2021

Time: 5:00 pm - 7:00 pm (MST)

Link: [Employee Housing Project Civic Engagement Meeting](#)

Please log in several minutes in advance to ensure you have a good connection and are ready to access the meeting when it begins.

We Want Your Feedback

Public participation is an important element of the planning process. We welcome your ideas, concerns, suggestions, and potential topics for consideration. Your comments will help us decide the best plan for improving the employee housing at Devils Tower National Monument.

We would like to hear your thoughts on:

- Preliminary range of concepts
- Potential issues with the Monument's resources
- Any other ideas you feel are relevant and important for this planning process

How to Comment

We invite you to participate in the planning process by submitting your ideas for this project. Comments must be received by March 17, 2021 to be considered.

Please share your comments online at:

<https://parkplanning.nps.gov/DETO>

E-mail your comments to:

DETO_Superintendent@nps.gov

Or mail your comments via US Postal Service to:

Devils Tower National Monument
Attn: Employee Housing Project
PO Box 10
Devils Tower, WY 82714

You should be aware that your entire comment, including your personal identifying information, may be made publicly available at any time. You may request that the NPS withhold your name and/or address from public disclosure. If you wish to do this, you must state this prominently at the beginning of your comment and make such a request by checking the box "keep my contact information private" on the website. The NPS will honor such requests to the extent allowable by law, but individuals should be aware that the NPS may still be required to disclose personal identifying information.

Stay Informed

For updates and information about the staff housing at the Monument, press releases, newsletters, and planning documents, please visit our website at:

<https://www.nps.gov/DETO>

Thank you for your interest in Devils Tower National Monument.