



# **Employee Housing Project**

## **Civic Engagement, March 2021**



## **National Park Service, Devils Tower National Monument**

- Amnesty Kochanowski, Superintendent
- Russ Cash, Cultural Resources Specialist
- Brent Keay, Facilities Manager

## **National Park Service, Denver Service Center**

- Connie Chitwood, Compliance Specialist
- Jason Riharb, Project Manager
- Holly Paris, Project Specialist

## **Croft & Associates Team**

- David Esterline, Project Manager
- Suzie Boltz, Compliance Lead
- Jayne Aaron, Cultural Resources Specialist
- Anita Struzinski, Environmental Scientist

# Agenda



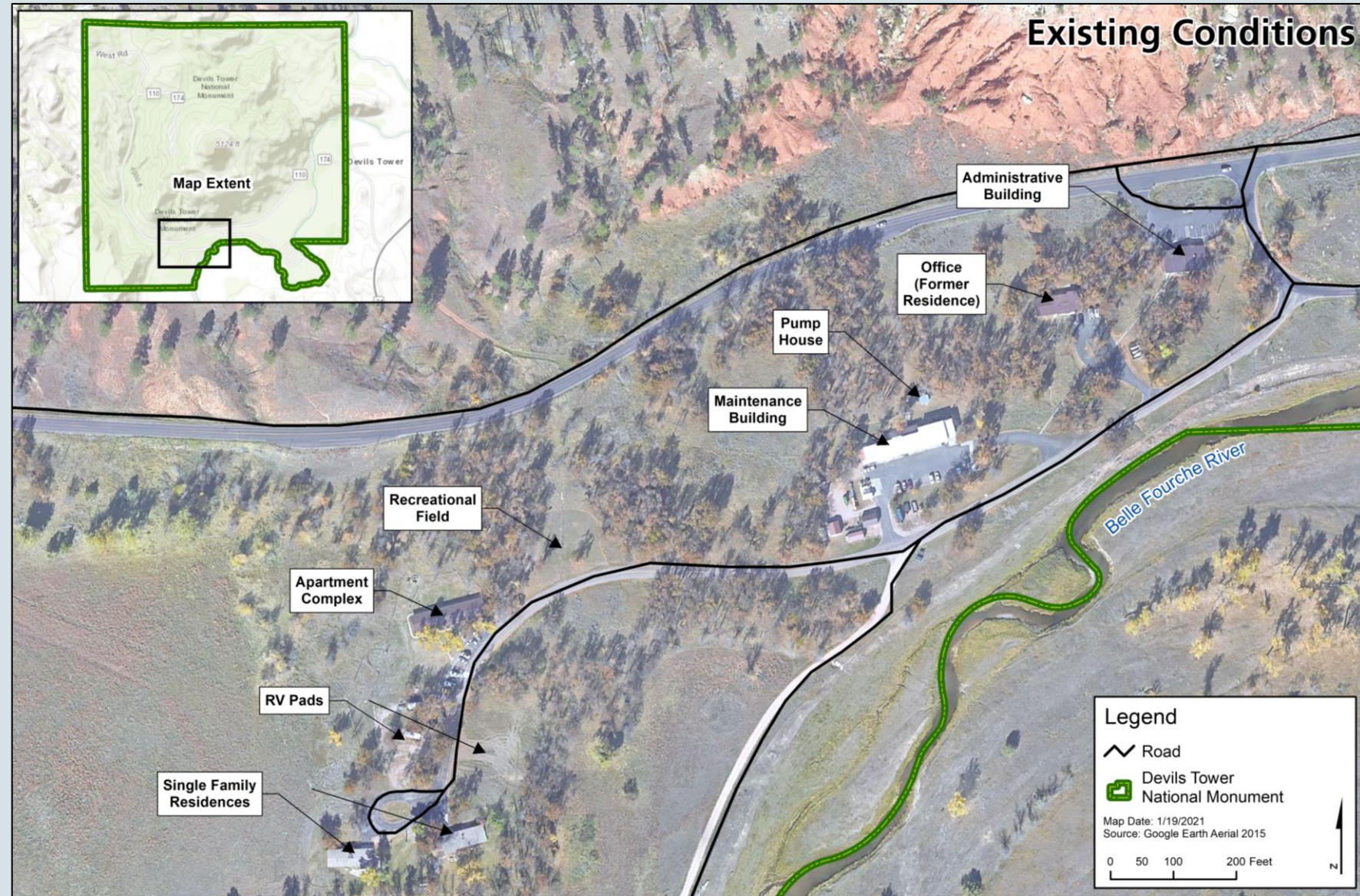
- House Rules
- Purpose and Need
- Current Housing Conditions
- Natural Resources
- Cultural Resources
- Housing Program
- How to Comment
- Question and Answer Session



# Purpose and Need



- The National Park Service is studying options to upgrade employee housing at Devils Tower National Monument in Crook County, Wyoming.
- Currently, there is very limited housing available in the local communities and at the Monument.
- The monument is seeing a significant increase in annual visitation, and staffing needs are especially critical.





# Current Housing Conditions



- The National Park Service is exploring options to replace an existing 6-unit housing building.
  - The existing 6-unit, single-story building was built in 1961 as part of the Mission 66 Program.
  - Four of the units are efficiency apartments and two units are one-bedroom apartments.
  - None of the units in the housing building meet accessibility standards, and there is no fire suppression system in the building.
  - There is one shared laundry room and one shared storage room in this building.



Existing 6-unit housing building

# Natural Resources



- Habitat in the proposed project area
  - Bluestem prairie fields – big bluestem (*Andropogon gerardii*), little bluestem (*Schizachyrium scoparium*)
  - Burr oak (*Quercus macrocarpa*) forests
- Special-status Species
  - Northern long-eared bats (*Myotis septentrionalis*)



# Cultural Resources – Many Perspectives



Devils Tower

- Sacred sites
- Cultural landscapes
- Archeological resources
- Historic structures



View of Devils Tower from the administration area



Crow Fair Parade



Administration building, constructed in 1958



# Cultural Resources – Historic Districts and Properties



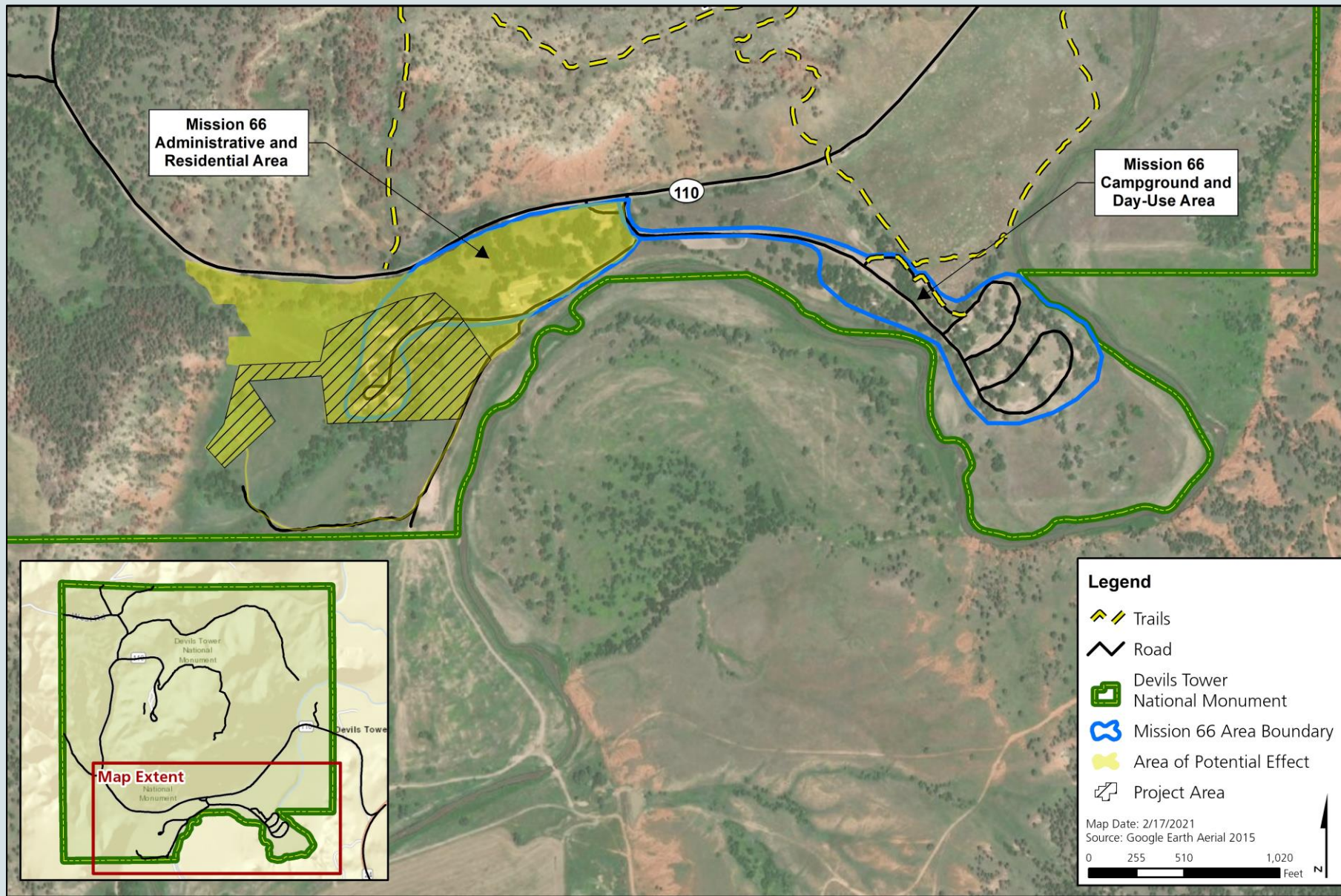
- Old Headquarters Area  
Historic District (1931 – 1950)
- Thorne Cabins and Thurman  
Café and Motel
- Tower Trail
- Proposed Mission 66  
Campground and Recreation  
Area (east of proposed project  
area)
- Proposed Mission 66  
Administrative and  
Residential Area (proposed  
project area)



Interpretation station along the Tower Trail



# Cultural Resources Survey



- A cultural resources survey was completed in 2020 for the site.
- Two Mission 66 districts are recommended as eligible for listing in the National Register of Historic Places:
  - Administrative and Residential Area
  - Campground and Day-Use Area



# Housing Program Elements



## Common Elements

The following elements are common to all proposed options. They were developed to address the housing needs identified, including updates to infrastructure and compliance with Architectural Barriers Act Accessibility Standard (ABAAS).

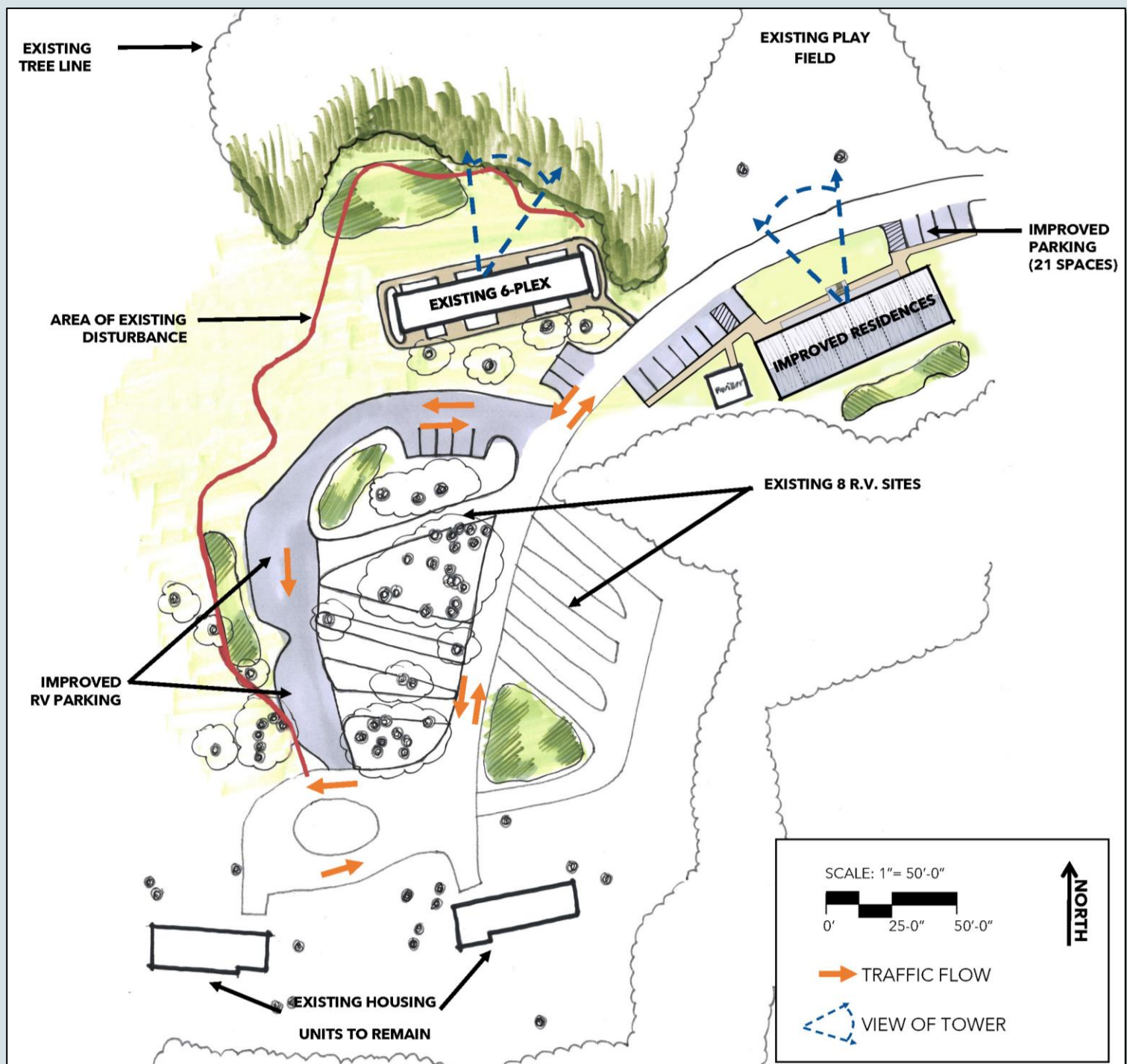
- New 9-unit, two-story facility would be added
  - Code-compliant and energy-efficient facility
  - Ground level units to be ABAAS accessible
  - Storage and laundry/shower units
- RV sites – Re-use existing eight sites and add two new pull-through sites
- Existing utilities would be upgraded by expanding the leach field and improving traffic flow and parking in the proposed project area
- Community gathering area – shade pavilion, fire pit, BBQ, paved concrete pad, site furnishing, and utility hookups

## Potential Differences

The proposed options would also differ in several way including, but not limited to, the following.

- Retain the existing 6-unit Mission 66 housing facility and add a new 9-unit housing facility; demolish the existing 6-unit Mission 66 housing facility with a new 9-unit housing facility; or replace the existing 6-unit Mission 66 housing facility with a new 9-unit housing facility.
- New disturbance would vary depending on whether the existing housing facility would remain or be replaced, ranging from approximately 2,000 to 13,000 square feet.
- The parking areas would either be centralized or separated from the new housing facility.
- Orientation of the RV sites would vary depending on the design option.



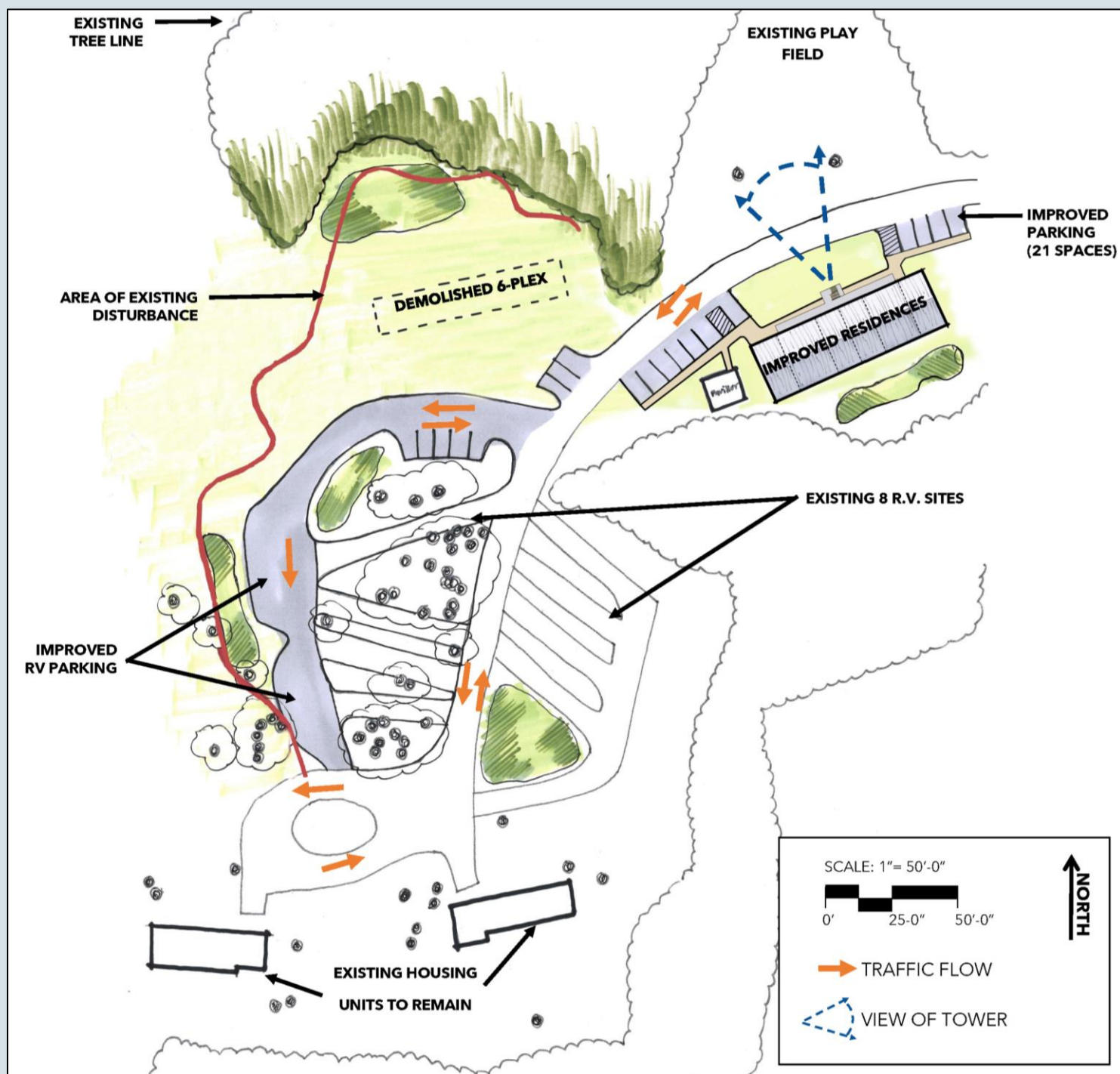


## Housing Development Plan

### Concept 1: Retain the Existing 6-Unit Housing Facility

- Retain the existing 6-unit Mission 66 housing facility and add a new 9-unit housing facility
- Approximately 13,000 square feet of new disturbance
- Direct clear view of tower from front windows





## Housing Development Plan

### Concept 2: Demolish the Existing 6-Unit Housing Facility

- Demolish the existing 6-unit Mission 66 housing facility and add a new 9-unit housing facility
- Approximately 13,000 square feet of new disturbance
- Direct clear view of tower from front windows





## Housing Development Plan

### Concept 3: Demolish and Replace the Existing 6-Unit Housing Facility

- Demolish and replace the existing 6-unit Mission 66 housing facility with a new 9-unit housing facility
- Approximately 2,000 square feet of new disturbance
- Improved direct view of tower from rear windows



# Housing Program Elements



## Common Elements

The following elements are common to all proposed options. They were developed to address the housing needs identified, including updates to infrastructure and compliance with Architectural Barriers Act Accessibility Standard (ABAAS).

- New 9-unit, two-story facility would be added
  - Code-compliant and energy-efficient facility
  - Ground level units to be ABAAS accessible
  - Storage and laundry/shower units
- RV sites – Re-use existing eight sites and add two new pull-through sites
- Existing utilities would be upgraded by expanding the leach field and improving traffic flow and parking in the proposed project area
- Community gathering area – shade pavilion, fire pit, BBQ, paved concrete pad, site furnishing, and utility hookups

## Potential Differences

The proposed options would also differ in several way including, but not limited to, the following.

- Retain the existing 6-unit Mission 66 housing facility and add a new 9-unit housing facility; demolish the existing 6-unit Mission 66 housing facility with a new 9-unit housing facility; or replace the existing 6-unit Mission 66 housing facility with a new 9-unit housing facility.
- New disturbance would vary depending on whether the existing housing facility would remain or be replaced, ranging from approximately 2,000 to 13,000 square feet.
- The parking areas would either be centralized or separated from the new housing facility.
- Orientation of the RV sites would vary depending on the design option.

# We want your feedback!



- We welcome your input. Your ideas and concerns will help us decide the best plan for updating the housing. We would like to hear your thoughts on:
  - preliminary range of concepts
  - potential issues with the Monument's resources
  - any other ideas you feel are relevant and important for this planning process
- Comments should be clear, concise, and relevant to the issues housing improvements at Devils Tower National Monument.
- Commenting is not a form of “voting.”
- Once we have received and considered your comments, we will move to the next phase, which will include assessing compliance needs.



# How to Comment



The screenshot shows the National Park Service website. At the top is the NPS logo and the text "National Park Service". Below this is a navigation bar with links: "Find a Park", "Discover History", "Explore Nature", "Get Involved", "Working With Communities", "Teachers", "Kids", and "About Us". The main content area is titled "PEPC Planning, Environment & Public Comment" and has sub-links: "PEPC Home", "Documents by Park", "Policy/Links", "Park Planning", and "Search Documents". On the left side, there is a sidebar with links: "Open for Comment", "Archived Projects", "Park/Unit Information", and "Park News". The main content area displays "Devils Tower National Monument" and "Intermountain » Wyoming". It includes a paragraph stating: "Listed in the table below are Devils Tower National Monument's current plans or projects. Click on the project title for more information." Below this is a table titled "Park Projects (found total 1)" with a search bar. The table has three columns: "Project Title", "Project Type", and "NEPA Type". The table contains one row: "Devils Tower National Monument Accessibility Improvement Program (AIP)", "Development Concept Plan/Site Plan", and "EA". A footnote at the bottom right of the table says "\* Open for comment." The footer of the website includes the "nps.gov" logo, the text "EXPERIENCE YOUR AMERICA™", and a row of links: "U.S. Department of the Interior", "FOIA", "Privacy Policy", "Disclaimer and Ownership", "USA.Gov", "NPS Home", "Accessibility", "RSS", and "NPS".

National Park Service

Find a Park Discover History Explore Nature Get Involved Working With Communities Teachers Kids About Us

PEPC Planning, Environment & Public Comment

PEPC Home Documents by Park Policy/Links Park Planning Search Documents

Open for Comment

Archived Projects

Park/Unit Information

Park News

## Devils Tower National Monument

Intermountain » Wyoming

Listed in the table below are Devils Tower National Monument's current plans or projects. Click on the project title for more information.

For general information, use the 'Park/Unit Information' link to the left, to go to the park's main internet page to access park information not related to park planning (for example, park brochures, lodging and campground reservations, and general park information).

Project Title	Project Type	NEPA Type
Devils Tower National Monument Accessibility Improvement Program (AIP)	Development Concept Plan/Site Plan	EA

\* Open for comment.

nps.gov EXPERIENCE YOUR AMERICA™

U.S. Department of the Interior FOIA Privacy Policy Disclaimer and Ownership USA.Gov NPS Home Accessibility RSS NPS

Submit comments electronically at:  
<https://parkplanning.nps.gov/DETO>

Email comments to:  
[DETO\\_Superintendent@nps.gov](mailto:DETO_Superintendent@nps.gov)

Mail comments to:  
Employee Housing Project  
Devils Tower National Monument  
PO Box 10  
Devils Tower, WY 82714

Comments must be received by  
[March 17, 2021 \(midnight MST\)](#)

We welcome your questions at this time.





**Thank you for your participation!**