



IN REPLY REFER TO:
L7615(YOSE-PM)

United States Department of the Interior

NATIONAL PARK SERVICE

Yosemite National Park
P. O. Box 577
Yosemite, California 95389

Memorandum

To: Bernadette Barthelenghi, Project Manager, Project Management Division

From: Superintendent, Yosemite National Park

Subject: NEPA and Section 106 Clearance: 2007-114 Crane Flat National Trails Surface Study (19915)

The Management Team has reviewed the proposed project/action and completed its environmental assessment documentation, and we have determined that there:

- Will not be any effect on threatened, endangered, or rare species and/or their critical habitat.
- Will not be any effect on historical, cultural, or archeological resources.
- Will not be serious or long-term undesirable environmental or visual effects.

The subject proposed project, therefore, is now cleared for all NEPA and Section 106 compliance requirements as presented above. Project plans and specifications are approved and construction and/or project implementation can commence.

For the proposed project actions to be within compliance requirements during construction and/or project implementation, the following mitigations must be adhered to:

- No mitigations identified.

//MJTollefson//
Michael J. Tollefson

Enclosure (with attachments)

cc: Statutory Compliance File

*The signed original of this document is on file at the
Environmental Planning and Compliance Office in
Yosemite National Park.*



National Park Service

Categorical Exclusion Form

Project: 2007-114 Crane Flat National Trails Surface Study

PIN: 19915

Date: April 18, 2008

Project Description: This project is in support of the National Center on Accessibility (NCA) Trails Surface Study and proposes to evaluate up to eight commercially available, biodegradable, liquid soil stabilizers on the intermediate restroom access trail adjacent to the Crane Flat Campground restroom facility. The study will conduct a 3-5 year evaluation on various trail surface applications where controlled testing, monitoring and research protocols can be followed that will determine if surfaces remain accessible over time. Research questions to be addressed include what surfaces are accessible, under what climactic conditions are various surface applications accessible, what are the maintenance considerations for various trail surface applications, and what is the impact of various soil characteristics, such as moisture, soil composition and how various soil applications interact positively, neutrally or negatively? No new trails will be established as part of the project. The application of the liquid soil stabilizer is applied by simply diluting it with water and spraying it or mixing it into loosened or compacted soil. Only the top 2-3" of trail base will be treated. Trail treatments will be 3' x 30' complete. A rototiller, a smooth drum soil compactor and a dilution tank with hose & nozzle will be used during the application effort. Application of the materials will be accomplished by NPS staff following manufacturer's instructions. Signage explaining the trails study and indicating manufacturer and material may be added in the future (if the NPS desires to highlight the study as part of the trail's recreational experience). The Americans with Disabilities Act (ADA) of 1990 requires that new and/or altered facilities be made accessible to and usable by people with disabilities. Titles II and III of the ADA cover a wide variety of recreation facilities such as boating and fishing facilities, golf courses, and parks, places of amusement, play areas, sports facilities, and trails. Newly constructed and altered recreation facilities and outdoor developed areas are required to comply with ADA Accessibility Guidelines.

Project Location:

Mariposa, CA, Crane Flat, Mather District

Mitigation:

- No mitigations identified.

Describe the category used to exclude action from further NEPA analysis and indicate the number of the category (see Section 3-4 of DO-12):

C.12. Minor trail relocations, development of compatible trail networks on logging roads or other established routes.

On the basis of the environmental impact information in the statutory compliance file, with which I am familiar, I am categorically excluding the described project from further NEPA analysis. No exceptional circumstances (e.g. all boxes in the ESF are marked "no") or conditions in Section 3-6 apply, and the action is fully described in Section 3-4 of DO-12.

//MJTollefson//
Park Superintendent

3/27/08
Date

*The signed original of this document is on file at the
Environmental Planning and Compliance Office in
Yosemite National Park.*



National Park Service

ENVIRONMENTAL SCREENING FORM (ESF)

DO-12 APPENDIX 1

(Revised June 2004, per DM)

Today's Date: **March 18, 2008**

Date Form Initiated: **03/17/2008**

A. PROJECT INFORMATION

Park Name: **Yosemite NP**

Project Title: **2007-114 Crane Flat National Trails Surface Study**

PEPC Project Number: **19915**

Project Type: **Facility Maintenance (FM)**

Project Location: County, State: **Mariposa Grove, Yosemite NP, California**

Project Leader: **Bernadette Barthelenghi**

B. PROJECT DESCRIPTION

This project is in support of the National Center on Accessibility (NCA) Trails Surface Study and proposes to evaluate up to eight commercially available, biodegradable, liquid soil stabilizers on the intermediate restroom access trail adjacent to the Crane Flat Campground restroom facility. The study will conduct a 3-5 year evaluation on various trail surface applications where controlled testing, monitoring and research protocols can be followed that will determine if surfaces remain accessible over time. Research questions to be addressed include what surfaces are accessible, under what climactic conditions are various surface applications accessible, what are the maintenance considerations for various trail surface applications, and what is the impact of various soil characteristics, such as moisture, soil composition and how various soil applications interact positively, neutrally or negatively? No new trails will be established as part of the project. The application of the liquid soil stabilizer is applied by simply diluting it with water and spraying it or mixing it into loosened or compacted soil. Only the top 2-3" of trail base will be treated. Trail treatments will be 3' x 30' complete. A rototiller, a smooth drum soil compactor and a dilution tank with hose & nozzle will be used during the application effort. Application of the materials will be accomplished by NPS staff following manufacturer's instructions. Signage explaining the trails study and indicating manufacturer and material may be added in the future (if the NPS desires to highlight the study as part of the trail's recreational experience). The Americans with Disabilities Act (ADA) of 1990 requires that new and/or altered facilities be made accessible to and usable by people with disabilities. Titles II and III of the ADA cover a wide variety of recreation facilities such as boating and fishing facilities, golf courses, parks, places of amusement, play areas, sports facilities, and trails. Newly constructed and altered recreation facilities and outdoor developed areas are required to comply with ADA Accessibility Guidelines.

Preliminary drawings attached? **Yes**

Is project a hot topic (controversial or sensitive issues that should be brought to attention of Regional Director)? **No**

C. RESOURCE EFFECTS TO CONSIDER:

Identify potential effects to the following physical, natural, or cultural resources	No Effect	Negligible Effects	Minor Effects	Exceeds Minor Effects	Data Needed to Determine/Notes
1. Geologic resources – soils, bedrock, streambeds, etc.	X				The project entails removing 1" - 3" of soil, adding liquid stabilizer, and applying the mixture back down onto the trail.
2. From geohazards	X				
3. Air quality	X				
4. Soundscapes		X			Temporary noises during application process.
5. Water quality or quantity	X				
6. Streamflow characteristics	X				
7. Marine or estuarine resources	X				
8. Floodplains or wetlands	X				
9. Land use, including occupancy, income, values, ownership, type of use	X				
10. Rare or unusual vegetation – old growth timber, riparian, alpine	X				
11. Species of special concern (plant or animal; state or federal listed or proposed for listing) or their habitat	X				
12. Unique ecosystems, biosphere reserves, World Heritage Sites	X				Yosemite National Park is a World Heritage site; no historic properties would be adversely affected by implementing this project; see Section F, National Historic Preservation Act Checklist, below.

13. Unique or important wildlife or wildlife habitat	X				
14. Unique or important fish or fish habitat	X				
15. Introduce or promote non-native species (plant or animal)	X				
16. Recreation resources, including supply, demand, visitation, activities, etc.	X				
17. Visitor experience, aesthetic resources	X				
18. Archeological resources	X				
19. Prehistoric/historic structure	X				
20. Cultural landscapes	X				
21. Ethnographic resources	X				
22. Museum collections (objects, specimens, and archival and manuscript collections)	X				
23. Socioeconomics, including employment, occupation, income changes, tax base, infrastructure	X				
24. Minority and low income populations, ethnography, size, migration patterns, etc.	X				
25. Energy resources	X				
26. Other agency or tribal land use plans or policies	X				
27. Resource, including energy, conservation potential, sustainability	X				
28. Urban quality, gateway communities, etc.	X				
29. Long-term management of resources or land/resource productivity	X				
30. Other important environment resources	X				

(e.g. geothermal, paleontological resources)?					
---	--	--	--	--	--

Comments:

D. MANDATORY CRITERIA

Mandatory Criteria: If implemented, would the proposal:	Yes	No	N/A	Comment or Data Needed to Determine
A. Have significant impacts on public health or safety?		X		
B. Have significant impacts on such natural resources and unique geographic characteristics as historic or cultural resources; park, recreation, or refuge lands; wilderness areas; wild or scenic rivers; national natural landmarks; sole or principal drinking water aquifers; prime farmlands; wetlands (Executive Order 11990); floodplains (Executive Order 11988); national monuments; migratory birds; and other ecologically significant or critical areas?		X		
C. Have highly controversial environmental effects or involve unresolved conflicts concerning alternative uses of available resources (NEPA section 102(2)(E))?		X		
D. Have highly uncertain and potentially significant environmental effects or involve unique or unknown environmental risks?		X		
E. Establish a precedent for future action or represent a decision in principle about future actions with potentially significant environmental effects?		X		
F. Have a direct relationship to other actions with individually insignificant, but cumulatively significant, environmental effects?		X		
G. Have significant impacts on properties listed or eligible for listing on the National Register of Historic Places, as determined by either the bureau or office?		X		
H. Have significant impacts on species listed or proposed to be listed on the List of Endangered or Threatened Species, or have significant impacts on designated Critical Habitat for these species?		X		

I. Violate a federal law, or a state, local, or tribal law or requirement imposed for the protection of the environment?		X		
J. Have a disproportionately high and adverse effect on low income or minority populations (Executive Order 12898)?		X		
K. Limit access to and ceremonial use of Indian sacred sites on federal lands by Indian religious practitioners or significantly adversely affect the physical integrity of such sacred sites (Executive Order 13007)?		X		
L. Contribute to the introduction, continued existence, or spread of noxious weeds or non-native invasive species known to occur in the area or actions that may promote the introduction, growth, or expansion of the range of such species (Federal Noxious Weed Control Act and Executive Order 13112)?		X		

For the purpose of interpreting these procedures within the NPS, any action that has the potential to violate the NPS Organic Act by impairing park resources or values would constitute an action that triggers the DOI exception for actions that threaten to violate a federal law for protection of the environment.

E. OTHER INFORMATION

Are personnel preparing this form familiar with the site? **Yes**

Did personnel conduct a site visit? **Yes, Facilities Management and Project Management**

Is the project in an approved plan such as a General Management Plan or an Implementation Plan with an accompanying NEPA document? **No**

Are there any interested or affected agencies or parties? **No**

Has consultation with all affected agencies or tribes been completed? **No**

Are there any connected, cumulative, or similar actions as part of the proposed action? (e.g., other development projects in area or identified in GMP, adequate/available utilities to accomplish project)? **No**

F. INTERDISCIPLINARY TEAM SIGNATORIES

Interdisciplinary Team	Field of Expertise
Michael Tollefson	Superintendent
Kevin Cann	Deputy Superintendent
Linda Dahl	Chief of Planning
Bill Delaney	Chief of Project Management
Larry Harris	Chief of Administration Management
Dennis Mattiuzzi	Chief of Facilities Management
Niki Nicholas	Chief of Resources Management & Science
Marty Nielson	Chief of Business and Revenue Management
Chris Stein	Chief of Interpretation and Education
Steve Shackelton	Chief Ranger
Bill Rust	Project Leader
Mark Butler	Environmental Planning and Compliance
	Program Manager
Jeannette Simons	NHPA Specialist
Renea Kennec	NEPA Specialist

G. SUPERVISORY SIGNATORY

Based on the environmental impact information contained in the statutory compliance file and in this environmental screening form, environmental documentation for this stage of the subject project is complete.

Recommended:

Compliance Specialist	Date
<u>//Renea Kennec//</u> Compliance Specialist – Renea Kennec	<u>3/18/08</u>
<u>//Mark Butler//</u> Compliance Program Manager – Mark Butler	<u>3/20/08</u>
<u>//Bill Delaney//</u> Chief, Project Management – Bill Delaney	<u>3/24/08</u>

Approved:

Superintendent	Date
<u>//R. Kevin Cann//</u> Michael Tollefson	<u>4/08/08</u>

*The signed original of this document is on file at the
Environmental Planning and Compliance Office in
Yosemite National Park.*

PARK ESF ADDENDUM

Today's Date: **March 18, 2008**

PROJECT INFORMATION

Park Name: Yosemite NP

Project Number: 19915

Project Type: Facility Maintenance (FM)

Project Location: County, State: Mariposa Grove, Yosemite NP, California

Project Leader: Bernadette Barthelenghi

Project Title: 2007-114 Crane Flat National Trails Surface Study

PARK ESF ADDENDUM QUESTIONS & ANSWERS

ESF Addendum Questions	Yes	No	N/A	Data Needed to Determine/Notes
1.SPECIAL STATUS SPECIES CHECKLIST				
2. Listed or proposed threatened or endangered species (Federal or State)?		X		
3. Species of special concern (Federal or State)?		X		
4. Park rare plants or vegetation?		X		
5. Potential habitat for any special-status species listed above?		X		
6.NATIONAL HISTORIC PRESERVATION ACT CHECKLIST				
7. Entail ground disturbance?	X			Soil disturbance includes 3" on a trail 3' wide by 150' long.
8. Are any archeological or ethnographic sites located within the area of potential effect?		X		
9. Entail alteration of a historic structure or cultural landscape?		X		
10. Has a National Register form been completed?		X		
11. Are there any structures on the park's List of Classified Structures in the area of potential effect?		X		
12.WILD AND SCENIC RIVERS ACT CHECKLIST				
13. Fall within a wild and scenic river corridor? (Name the river corridor)		X		
14. Fall within the bed and banks AND will effect the free-flow of the river?		X		
15. Have the possibility of affecting water quality of the area?			X	
16. Remain consistent with its river segment classification?			X	
17. Protect and enhance river ORVs?			X	

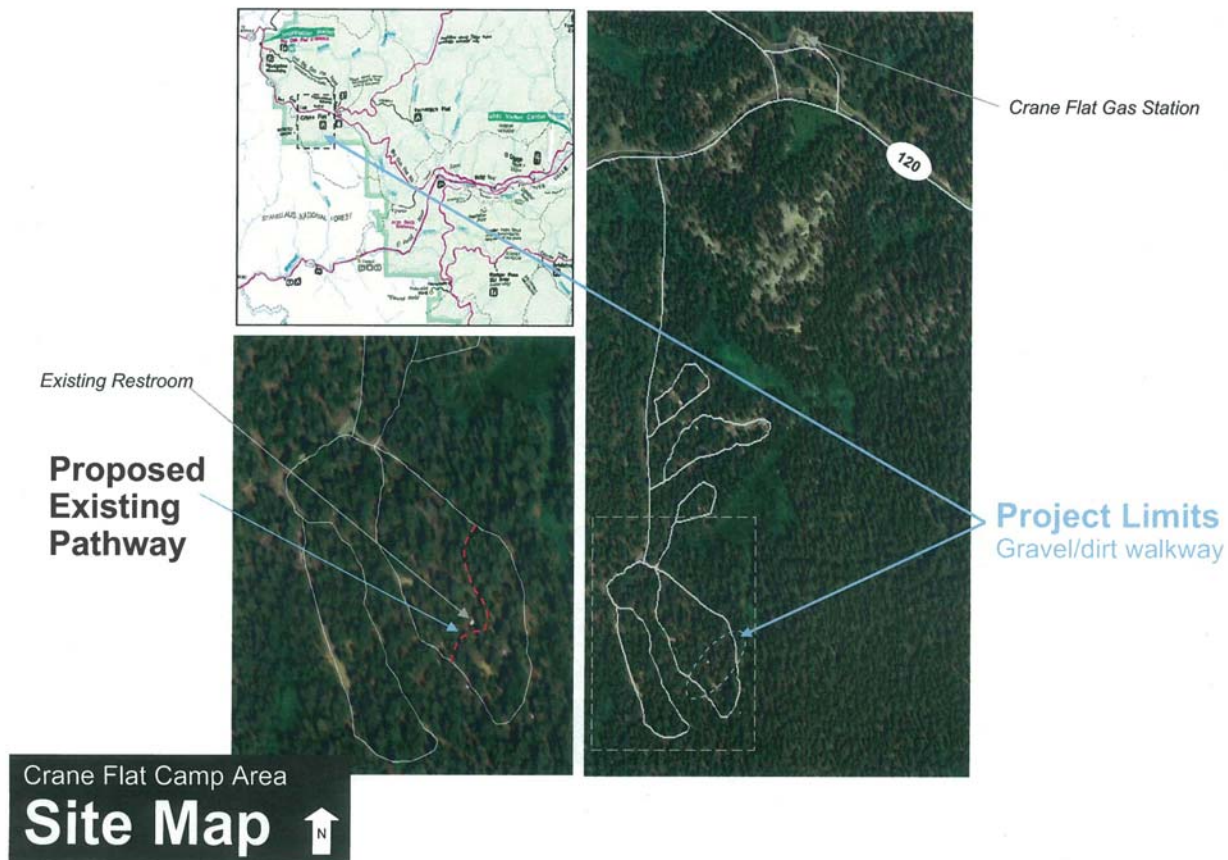
18. Fall within the River Protection Overlay?			X	
19. If Yes, remain consistent with conditions of the River Protection Overlay?			X	
20. Remain consistent with the areas Management Zoning?			X	
21. Fall on a tributary of a Wild and Scenic River?			X	
22. Will the project encroach or intrude upon the Wild and Scenic River corridor?			X	
23. Will the project unreasonably diminish scenic, recreational, or fish and wildlife values?			X	
100. WILDERNESS ACT CHECKLIST			X	
101. Within designated Wilderness?			X	
102. Within a Potential Wilderness Addition?			X	

Yosemite National Park

Participation in National Trails Surface Study



EXPERIENCE
YOUR
AMERICA



National Park Service



EXPERIENCE
YOUR
AMERICA



Crane Flat Campground "Camper-Trail" adjacent to Site #520
(looking down from upper roadway)



National Park Service

ASSESSMENT OF ACTIONS HAVING AN EFFECT ON CULTURAL RESOURCES

A. DESCRIPTION OF UNDERTAKING

1. Park: Yosemite NP Park District: Crane Flat

2. **Project Description:**

a. Project Name: 2007-114 Crane Flat National Trails Surface Study Date: March 11, 2008 Park Project Number: 19915

b. Describe project and area of potential effects (as defined in 36 CFR 800.2[c]).

This project is in support of the National Center on Accessibility (NCA) Trails Surface Study and proposes to evaluate up to 8 commercially available, biodegradable, liquid soil stabilizers on the intermediate restroom access trail adjacent to the Upper Crane Flat Campground restroom facility.

The study will conduct a 3-5 year evaluation on various trail surface applications where controlled testing, monitoring and research protocols can be followed that will determine if surfaces remain accessible over time. Research questions to be addressed include what surfaces are accessible, under what climactic conditions are various surface applications accessible, what are the maintenance considerations for various trail surface applications, and what is the impact of various soil characteristics, e.g. moisture, soil composition and how various soil applications interact positively, neutrally or negatively? No new trails will be established as part of the project. The application of the liquid soil stabilizer is applied by simply diluting it with water and spraying it or mixing it into loosened or compacted soil. Only the top 2-3" of trail base will be treated. Trail treatments will be 3' x 30' complete. A rototiller, a smooth drum soil compactor and a dilution tank with hose & nozzle will be used during the application effort. Application of the materials will be accomplished by NPS staff following manufacturer's instructions. Signage explaining the trails study and indicating manufacturer and material may be added in the future (if the NPS desires to highlight the study as part of the trail's recreational experience). The Americans with Disabilities Act of 1990 requires that new and/or altered facilities be made accessible to and usable by people with disabilities. Titles II and III of the ADA cover a wide variety of recreation facilities such as boating and fishing facilities, golf courses, parks, places of amusement, play areas, sports facilities, and trails. Newly constructed and altered recreation facilities and outdoor developed areas are required to comply with ADA Accessibility Guidelines.

3. Has the area of potential effects been surveyed to identify cultural resources?

☒ No

☐ Yes Source or reference ____

☐ Check here if no known cultural resources will be affected. (If this is because area has been disturbed, please explain or attach additional information to show the disturbance was so extensive as to preclude intact cultural deposits.)

4. Potentially Affected Resource(s):

5. The proposed action will: (check as many as apply)

☐ No Destroy, remove, or alter features/elements from a historic structure

☐ No Replace historic features/elements in kind

☐ No Add non-historic features/elements to a historic structure

☐ No Alter or remove features/elements of a historic setting or environment (inc. terrain)

☐ Yes Add non-historic features/elements (inc. visual, audible, or atmospheric) to a historic setting or cultural landscape

☐ No Disturb, destroy, or make archeological resources inaccessible

☐ No Disturb, destroy, or make ethnographic resources inaccessible

☐ No Potentially affect presently unidentified cultural resources

☐ No Begin or contribute to deterioration of historic features, terrain, setting, landscape elements, or archeological or ethnographic resources

☐ No Involve a real property transaction (exchange, sale, or lease of land or structures)

☐ Other (please specify) _____

6. Measures to prevent or minimize loss or impairment of historic/prehistoric properties:

(Remember that setting, location, and use may be relevant.)

- No Assessment of Effect mitigations identified.

7. Supporting Study Data:

(Attach if feasible; if action is in a plan, EA or EIS, give name and project or page number.)

8. Attachments: ☐ Maps ☐ Archeological survey, if applicable ☐ Drawings ☐ Specifications

☐ Photographs ☐ Scope of Work ☐ Site plan ☐ List of Materials ☐ Samples

☐ Other _____

Prepared by Jeannette Simons **Date** _____

Title _____ **Telephone** 209-379-1372

B. REVIEWS BY CULTURAL RESOURCE SPECIALISTS

The park 106 coordinator requested review by the park's cultural resource specialist/advisers as indicated by check-off boxes or as follows:

☒ ARCHEOLOGIST

Name: Laura Kirn

Date: 02/20/2008

Comments:

Check if project does not involve ground disturbance ☐

Assessment of Effect: ☒ No Historic Properties Affected ☐ No Adverse Effect ☐ Adverse Effect
☐ Programmatic Exclusion

Recommendations for conditions or stipulations:

☐ CURATOR

Name:

Date:

Comments:

Check if project does not involve ground disturbance ☐ Assessment of Effect: ☐ No Historic
Properties Affected ☐ No Adverse Effect ☐ Adverse Effect ☐ Programmatic
Exclusion

Recommendations for conditions or stipulations:

☐ ANTHROPOLOGIST

Name:

Date:

Comments:

Check if project does not involve ground disturbance ☐ Assessment of Effect: ☐ No Historic
Properties Affected ☐ No Adverse Effect ☐ Adverse Effect ☐ Programmatic
Exclusion

Recommendations for conditions or stipulations:

☐ HISTORIAN

Name:

Date:

Comments:

Check if project does not involve ground disturbance ☐ Assessment of Effect: ☐ No Historic
Properties Affected ☐ No Adverse Effect ☐ Adverse Effect ☐ Programmatic
Exclusion

Recommendations for conditions or stipulations:

[X] HISTORICAL ARCHITECT

Name: Sueann Brown

Date: 02/20/2008

Comments:

Check if project does not involve ground disturbance []

Assessment of Effect: ___ No Historic Properties Affected x No Adverse Effect ___ Adverse Effect
___ Programmatic Exclusion

Recommendations for conditions or stipulations:

[X] HISTORICAL LANDSCAPE ARCHITECT

Name: David Humphrey

Date: 02/20/2008

Comments: None.

Check if project does not involve ground disturbance []

Assessment of Effect: ___ No Historic Properties Affected x No Adverse Effect ___ Adverse Effect
___ Programmatic Exclusion

Recommendations for conditions or stipulations:

None.

RESOURCES MANAGEMENT AND SCIENCE DIVISION RECOMMENDATIONS

Review by specialists: The appropriate subject-matter experts have reviewed the project and entered their comments and recommendations above.

The comments and recommendations for the proposed action are consistent with all applicable NPS management policies, standards, guidelines, or US DOI standards and guidelines, Rehabilitation of Historic Buildings, or others, and incorporates measures to avoid Adverse Effects.

Reviewed and Accepted by:

Signature: //Niki Stephanie Nicholas// **Date:** 3/12/08

Chief of Resources Management & Science Division

[] 106 Advisor

Name:

Date:

Comments:

Check if project does not involve ground disturbance [] Assessment of Effect: _____ No Historic Properties Affected _____ No Adverse Effect _____ Adverse Effect _____ Programmatic Exclusion

Recommendations for conditions or stipulations:

C. PARK SECTION 106 COORDINATOR'S REVIEW AND RECOMMENDATIONS

1. Assessment of Effect:

_____ No Historic Properties Affected X No Adverse Effect _____ Adverse Effect

2. Compliance requirements:

☐ A. STANDARD 36 CFR PART 800 CONSULTATION

Further consultation under 36 CFR Part 800 is needed.

☐ B. PROGRAMMATIC EXCLUSION UNDER THE 1995 SERVICEWIDE PROGRAMMATIC AGREEMENT (PA)

The above action meets all conditions for a programmatic exclusion under Stipulation IV of the 1995 Servicewide PA for Section 106 compliance.

APPLICABLE EXCLUSION: Exclusion IV.B
(Specify 1-13 or IV.C addition to the list of exclusions.)

☐ C. PLAN-RELATED UNDERTAKING

Consultation and review of the proposed undertaking were completed in the context of a plan review process, in accordance with the 1995 Servicewide PA and 36 CFR Part 800.
Specify plan/EA/EIS: _____

☒ D. UNDERTAKING RELATED TO ANOTHER AGREEMENT

The proposed undertaking is covered for Section 106 purposes under another document such as a statewide agreement established in accord with 36 CFR 800.7 or counterpart regulations.
Specify: 1999 PA

☐ E. COMPLIANCE REQUIREMENTS SATISFIED BY USE OF NEPA

Documentation is required for the preparation of an EA/FONSI or an EIS/ROD has been developed and used so as also to meet the requirements of 36 CFR 800.3 through 800.6

☐ F. STIPULATIONS/CONDITIONS

Following are listed any stipulations or conditions necessary to ensure that the assessment of effect above is consistent with 36 CFR Part 800 criteria of effect or to avoid or reduce potential adverse effects.

Recommended by Park Section 106 coordinator:

Historic Preservation Officer //Jeannette Simons//

Date: 3/17/08

D. SUPERINTENDENT'S APPROVAL

The proposed work conforms to the NPS *Management Policies* and *Cultural Resource Management Guideline*, and I have reviewed and approve the recommendations, stipulations, or conditions noted in Section C of this form.

Signature of Superintendent //MJTollefson//

Date 3/27/08

*The signed original of this document is on file at the
Environmental Planning and Compliance Office in
Yosemite National Park.*