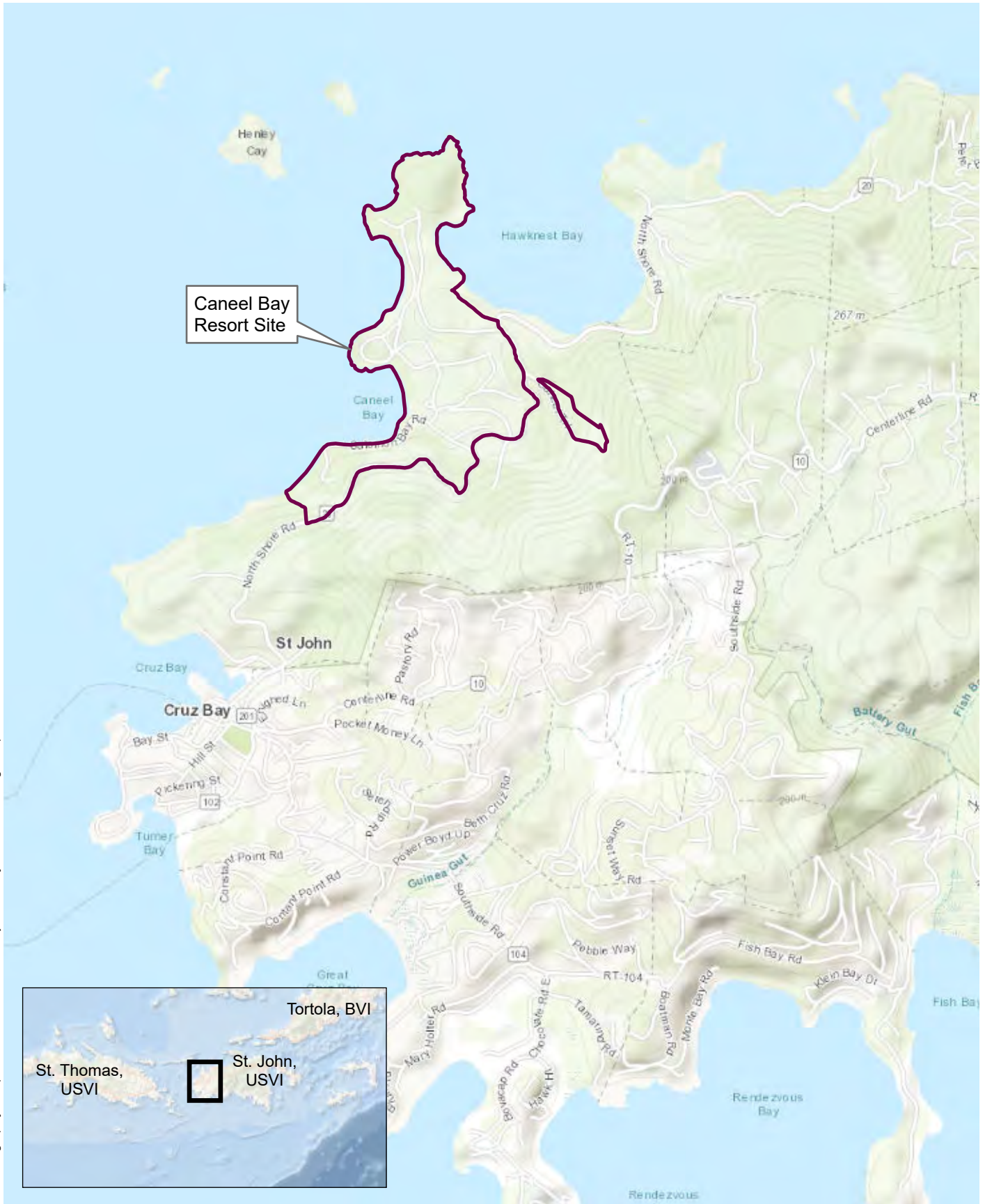




\\vhb.com\gis\proj\Montpellier\58345.21 NPS Caneel Bay Resort\Project\APR\EECA Figures.aprx



Caneel Property

### Caneel Bay Resort Site EE/CA

St. John, USVI

Source Info:  
Base map from ESRI/World Topo Map

### Site Location Map





\\vhb.com\oiship\proj\Montpelier\5824521 NP5 Caneel Bay Resort\Project\APR\X\Figure B-1 Site Layout.aprx



- Primary Investigation Areas
- Caneel Bay Resort

### Caneel Bay Resort Site

VIIS, St. John, USVI

Source Info:  
Base map from ESRI/World Imagery (2017)

### Site Layout





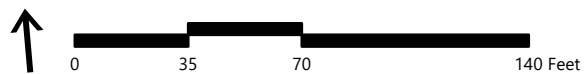
June 1, 2021

AR-001628

FIGURE 3



\\vhb.com\isr\proj\Montpelier\58245 21 NP5 Caneel Bay Resort\Project\APR\X\EECA Figures.aprx



- Soil Boring
- Monitoring Well
- ISM Decision Unit
- Caneel Bay Resort
- Primary Investigation Areas
- Contour (2 ft)
- Cross Section Transect

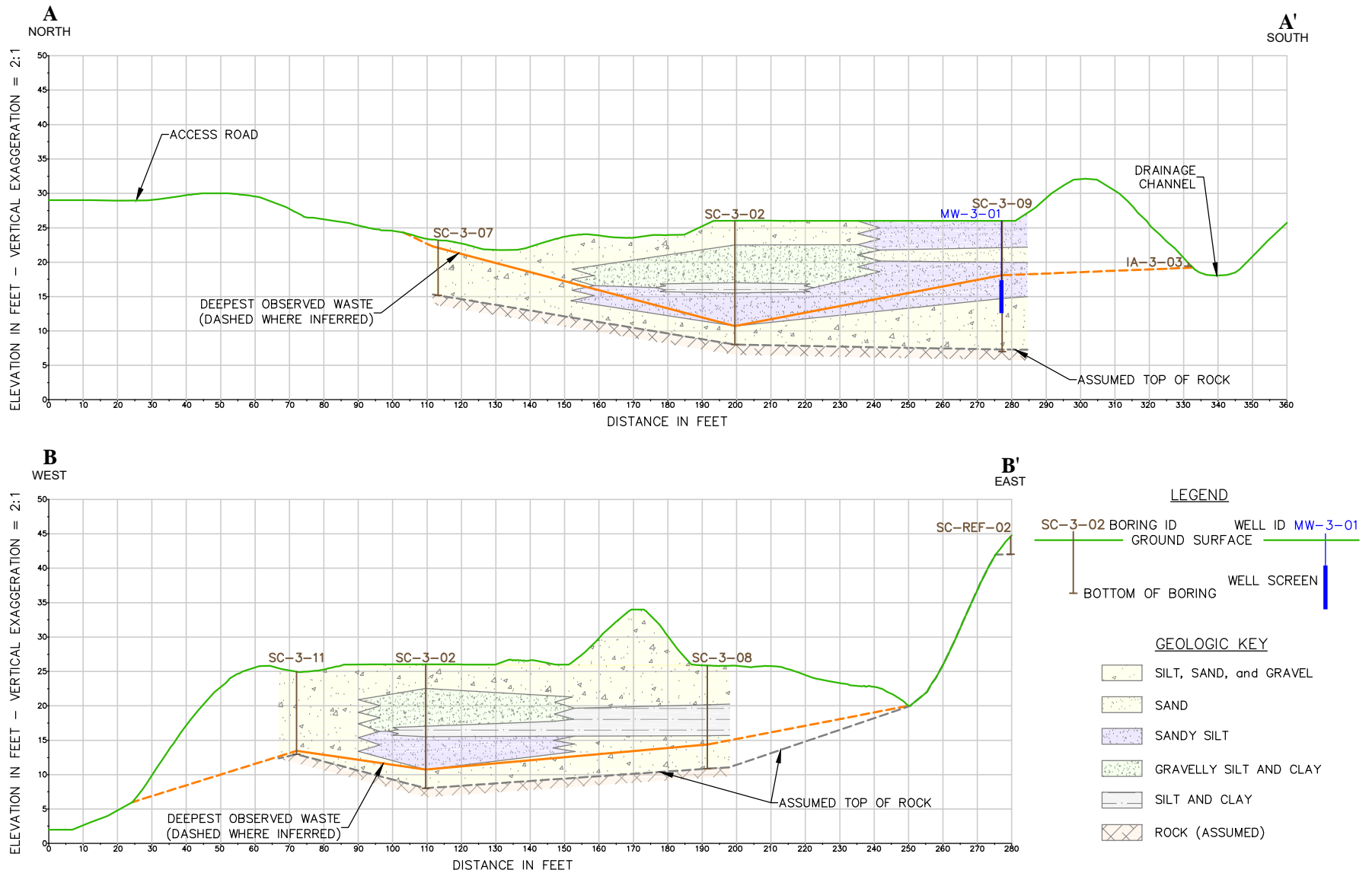
Caneel Bay Resort Site EE/CA

VIIS, St. John, USVI

Source Info:  
Base map from ESRI/World Imagery (2017)

Landfill Topography and Cross-  
Section Locations





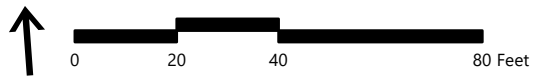
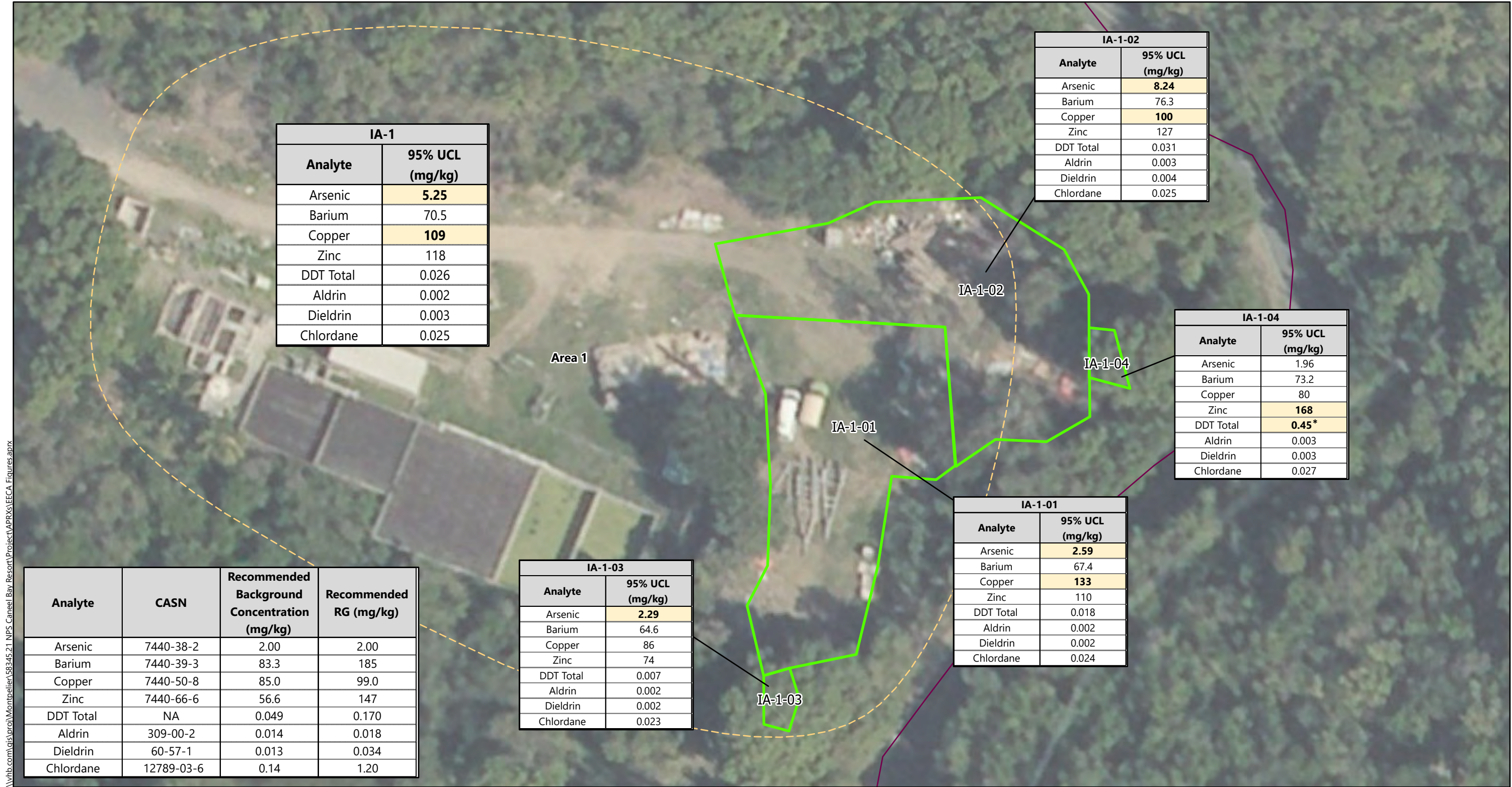
DRAFT



Cross Sections A-A' & B-B'  
Caneel Bay Resort Site  
U.S. Virgin Islands  
58345.21

Figure 4

04/02/2021



- Surface Soil Decision Unit
- Primary Investigation Areas
- Caneel Bay Resort

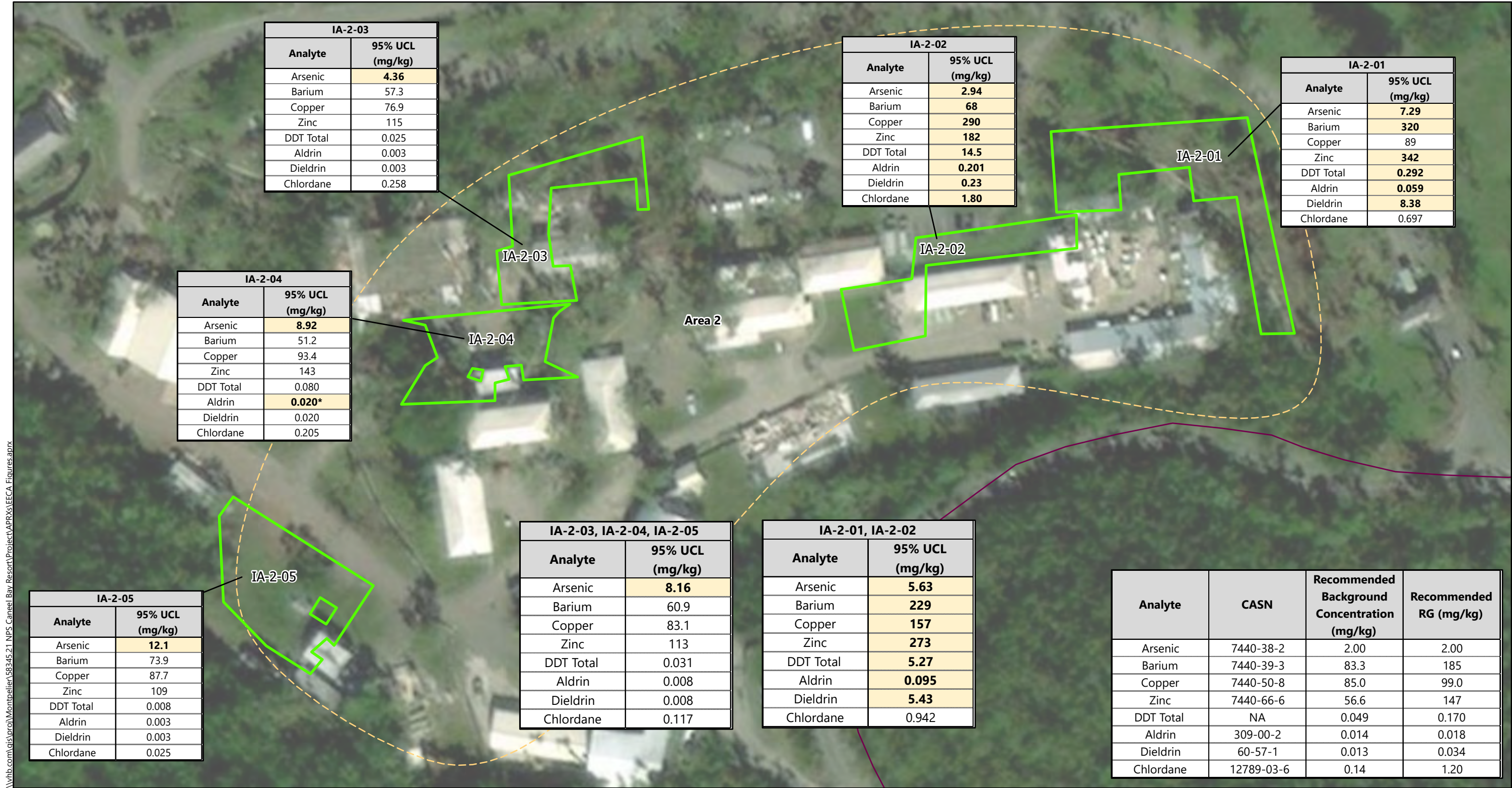
### Caneel Bay Resort Site

VIIS, St. John, USVI

Source Info:  
Base map from ESRI/World Imagery (2017)  
Notes:  
1. Shaded cell and bolded value indicates the calculated 95% UCL exceeds the Recommended RG.  
2. "DDT Total" is the sum of DDT and its breakdown products (DDD and DDE).  
3. \*DDT, DDE, and DDD were not detected in IA-1-04. The calculated 95% UCL exceeds the Recommended RG due to an elevated reporting limit in one replicate sample.  
4. "UCL" = upper confidence level of mean

### Removal Goal Exceedances in Surface Soil - Area 1





IA-2-03	
Analyte	95% UCL (mg/kg)
Arsenic	<b>4.36</b>
Barium	57.3
Copper	76.9
Zinc	115
DDT Total	0.025
Aldrin	0.003
Dieldrin	0.003
Chlordane	0.258

IA-2-02	
Analyte	95% UCL (mg/kg)
Arsenic	<b>2.94</b>
Barium	<b>68</b>
Copper	<b>290</b>
Zinc	<b>182</b>
DDT Total	<b>14.5</b>
Aldrin	<b>0.201</b>
Dieldrin	<b>0.23</b>
Chlordane	<b>1.80</b>

IA-2-01	
Analyte	95% UCL (mg/kg)
Arsenic	<b>7.29</b>
Barium	<b>320</b>
Copper	89
Zinc	<b>342</b>
DDT Total	<b>0.292</b>
Aldrin	<b>0.059</b>
Dieldrin	<b>8.38</b>
Chlordane	0.697

IA-2-04	
Analyte	95% UCL (mg/kg)
Arsenic	<b>8.92</b>
Barium	51.2
Copper	93.4
Zinc	143
DDT Total	0.080
Aldrin	<b>0.020*</b>
Dieldrin	0.020
Chlordane	0.205

IA-2-05	
Analyte	95% UCL (mg/kg)
Arsenic	<b>12.1</b>
Barium	73.9
Copper	87.7
Zinc	109
DDT Total	0.008
Aldrin	0.003
Dieldrin	0.003
Chlordane	0.025

IA-2-03, IA-2-04, IA-2-05	
Analyte	95% UCL (mg/kg)
Arsenic	<b>8.16</b>
Barium	60.9
Copper	83.1
Zinc	113
DDT Total	0.031
Aldrin	0.008
Dieldrin	0.008
Chlordane	0.117

IA-2-01, IA-2-02	
Analyte	95% UCL (mg/kg)
Arsenic	<b>5.63</b>
Barium	<b>229</b>
Copper	<b>157</b>
Zinc	<b>273</b>
DDT Total	<b>5.27</b>
Aldrin	<b>0.095</b>
Dieldrin	<b>5.43</b>
Chlordane	0.942

Analyte	CASN	Recommended Background Concentration (mg/kg)	Recommended RG (mg/kg)
Arsenic	7440-38-2	2.00	2.00
Barium	7440-39-3	83.3	185
Copper	7440-50-8	85.0	99.0
Zinc	7440-66-6	56.6	147
DDT Total	NA	0.049	0.170
Aldrin	309-00-2	0.014	0.018
Dieldrin	60-57-1	0.013	0.034
Chlordane	12789-03-6	0.14	1.20



- Surface Soil Decision Unit
- Primary Investigation Areas
- Caneel Bay Resort

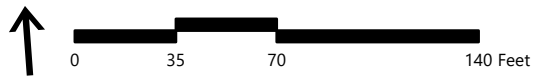
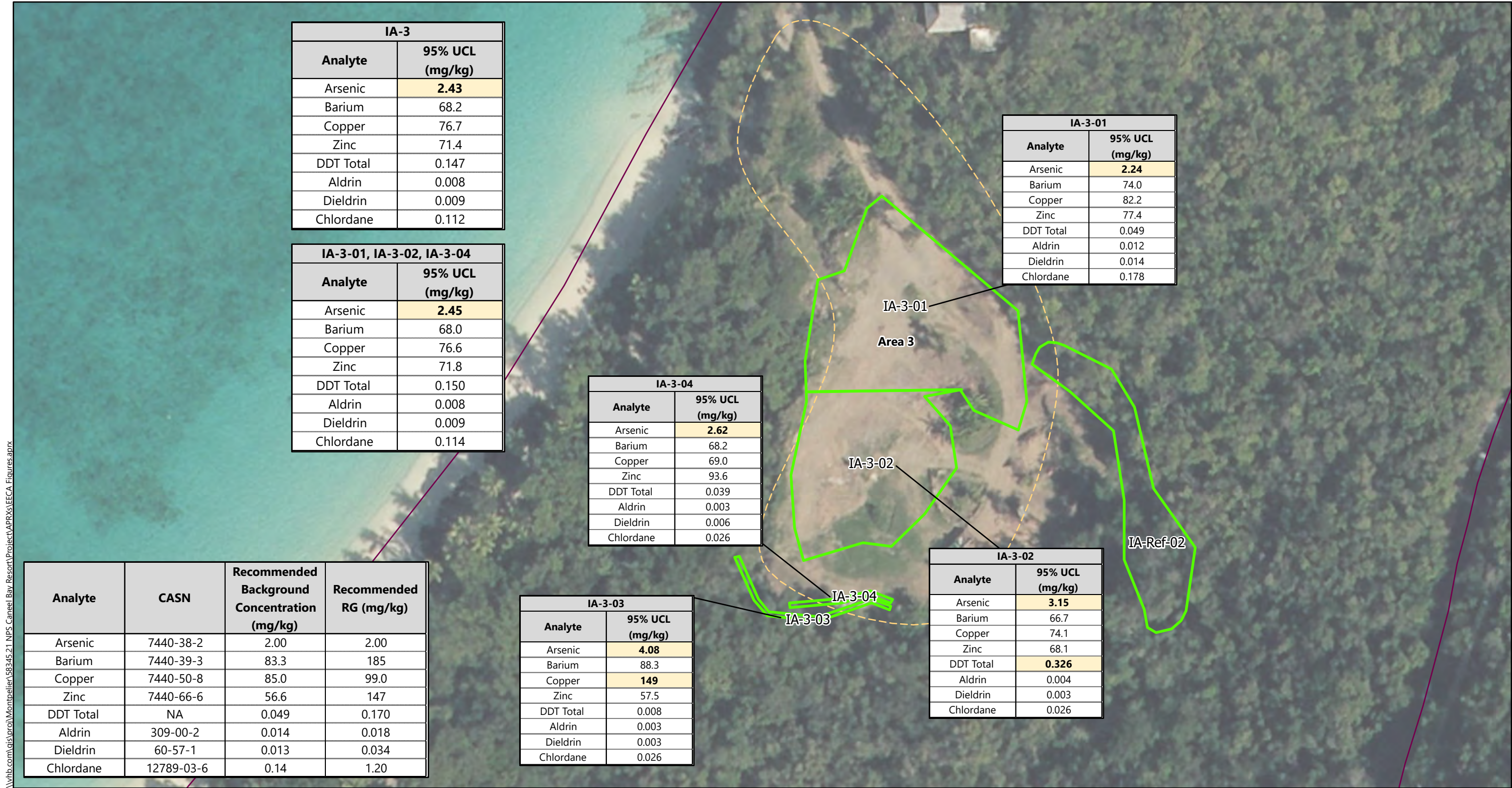
Caneel Bay Resort Site

VIIS, St. John, USVI

Source Info:  
Base map from ESRI/World Imagery (2017)  
Notes:  
1. Shaded cell and bolded value indicates the calculated 95% UCL exceeds the Recommended RG.  
2. "DDT Total" is the sum of DDT and its breakdown products (DDD and DDE).  
3. \*Aldrin was not detected in IA-2-04. The calculated 95% UCL exceeds the Recommended RG due to an elevated reporting limit in one replicate sample.  
4. "UCL" = upper confidence level of mean

Removal Goal Exceedances in Surface Soil - Area 2





- Surface Soil Decision Unit
- Primary Investigation Areas
- Caneel Bay Resort

Caneel Bay Resort Site

VIIS, St. John, USVI

Source Info:  
Base map from ESRI/World Imagery (2017)  
Notes:  
1. Shaded cell and bolded value indicates the calculated 95% UCL exceeds the Recommended RG.  
2. "DDT Total" is the sum of DDT and its breakdown products (DDD and DDE).  
3. "UCL" = upper confidence level of mean

Removal Goal Exceedances in Surface Soil - Area 3





\\vhb.com\dis\proj\Montpelier\58345\21 NPS Caneel Bay Resort\Project\APR\Xs\EECA Figures.aprx



- Surface Soil Decision Unit
- Primary Investigation Areas
- Caneel Bay Resort
- Soil Sample Location

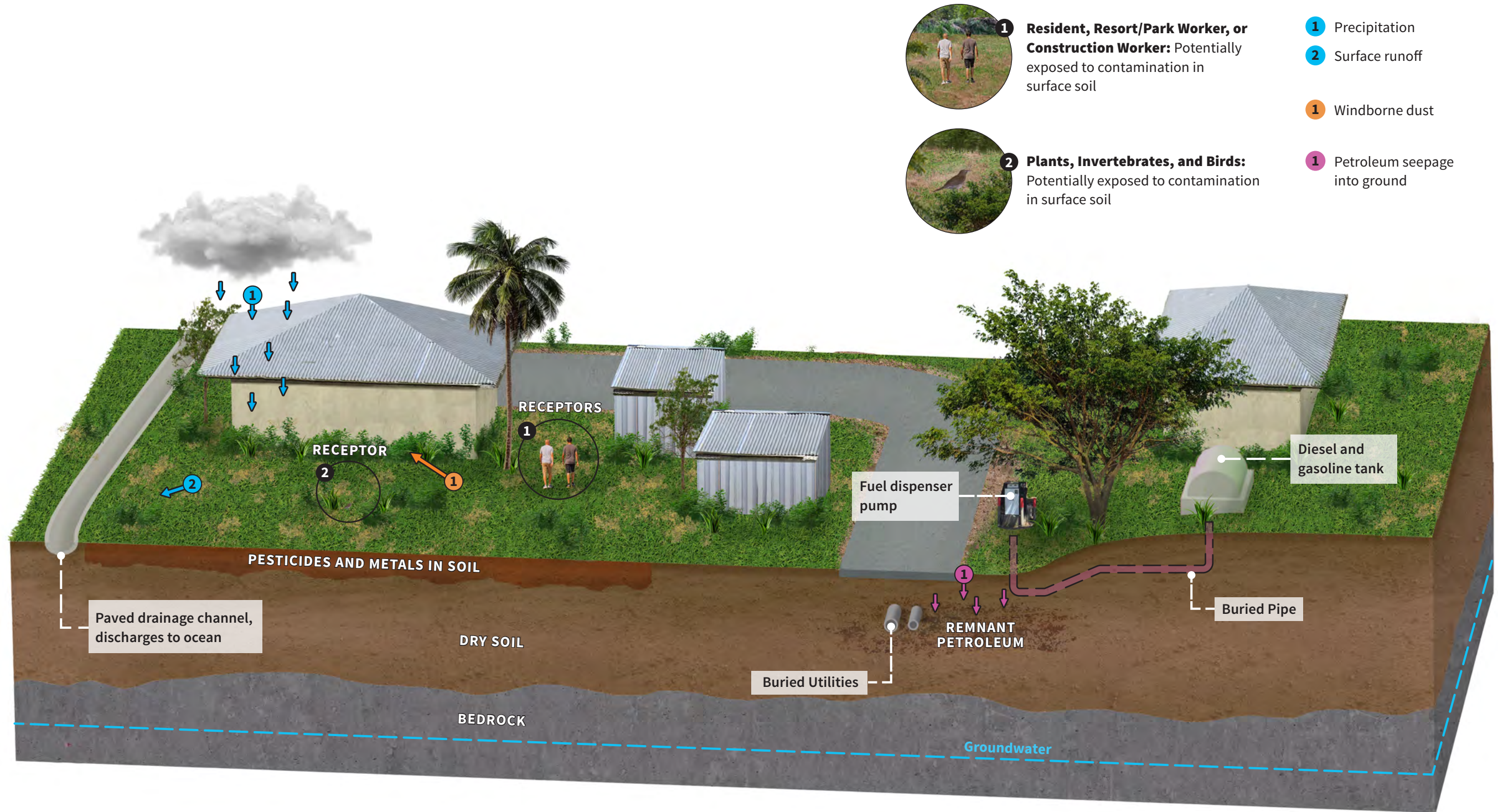
Caneel Bay Resort Site

VIIS, St. John, USVI

Source Info:  
Base map from ESRI/World Imagery (2017)  
Notes:  
1. Shaded cell and bolded value indicates the calculated 95% UCL exceeds the Recommended RG.  
2. "DDT Total" is the sum of DDT and its breakdown products (DDD and DDE).  
3. "ftbgs" = feet below ground surface  
4. "UCL" = upper confidence level of mean

Removal Goal Exceedances in Subsurface Soil - Area 1





Caneel Bay Resort Site

VIIS, St. John, USVI

**Area 2 Conceptual  
Site Model**





**1 Resident:** Resident potentially exposed to contamination from surface and subsurface soils.



**2 Invertebrates and Birds:** Potentially exposed to contamination in surface soil.

**1** Precipitation

**2** Infiltration

**3** Groundwater seeps at side of landfill

**4** Intermittent stream flow

**1** Windborne dust

**2** Erosion of landfill slope



**Caneel Bay Resort Site**

VIIS, St. John, USVI

**Area 3 Conceptual  
Site Model**