

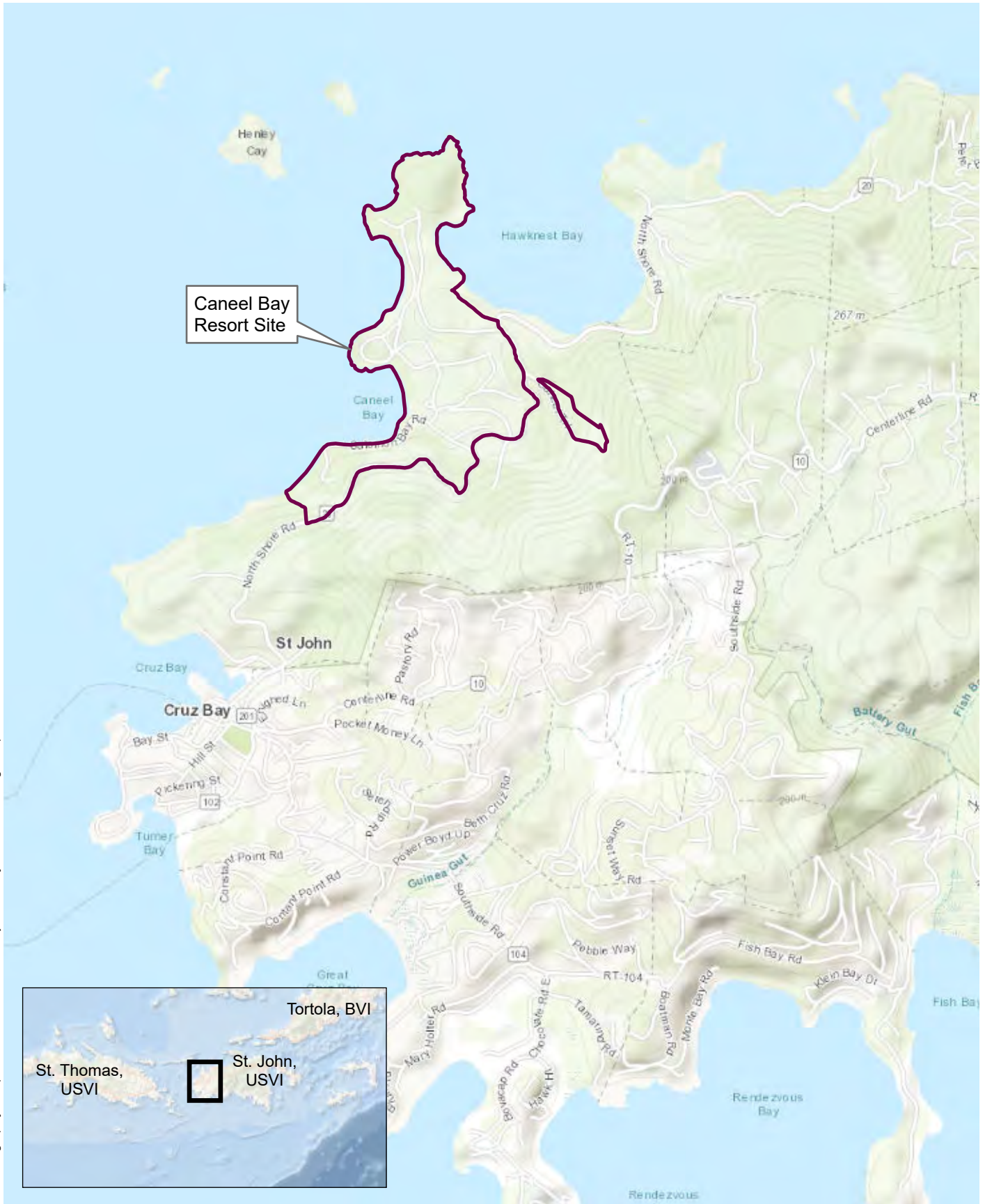


May 11, 2021

AR-003339

FIGURE 1

\\vhb.com\gis\proj\Montpellier\58345.21 NPS Caneel Bay Resort\Project\APR\Xs\EECA Figures.aprx



Caneel Property

Caneel Bay Resort Site EE/CA

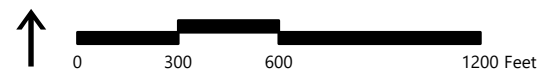
St. John, USVI

Source Info:
Base map from ESRI/World Topo Map

Site Location Map



\\vhb.com\oiship\proj\Montpelier\5824521 NP5 Caneel Bay Resort\Project\APR\X\Figure B-1 Site Layout.aprx



- Primary Investigation Areas
- Caneel Bay Resort

Caneel Bay Resort Site

VIIS, St. John, USVI

Source Info:
Base map from ESRI/World Imagery (2017)

Site Layout



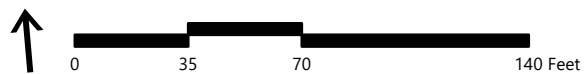
June 1, 2021

AR-003341

FIGURE 3



\\vhb.com\isr\proj\Montpelier\58245 21 NP5 Caneel Bay Resort\Project\APR\X\EECA Figures.aprx



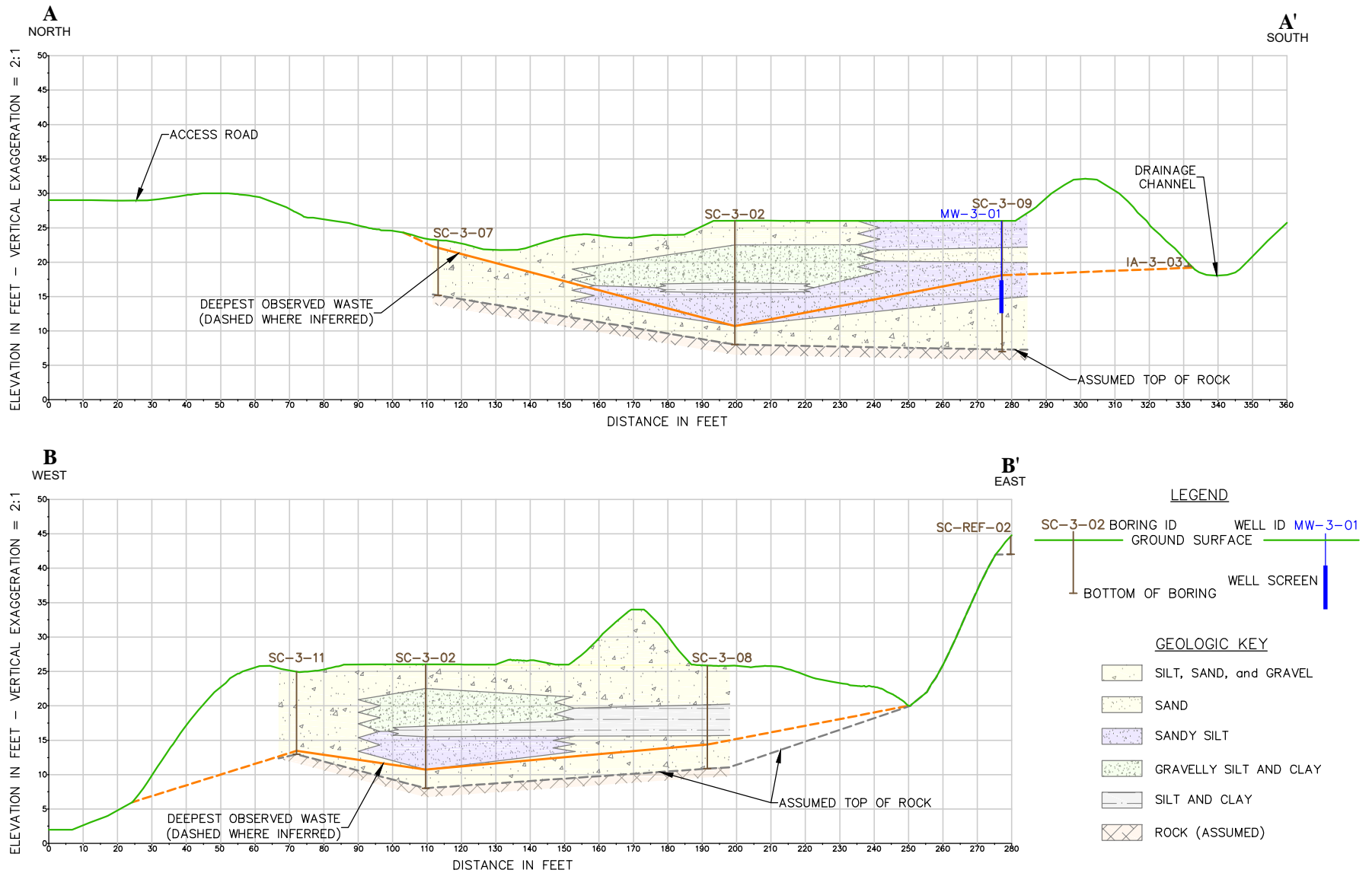
- Soil Boring
- Monitoring Well
- ISM Decision Unit
- Caneel Bay Resort
- Primary Investigation Areas
- Contour (2 ft)
- Cross Section Transect

Caneel Bay Resort Site EE/CA

VIIS, St. John, USVI

Source Info:
Base map from ESRI/World Imagery (2017)

Landfill Topography and Cross-
Section Locations



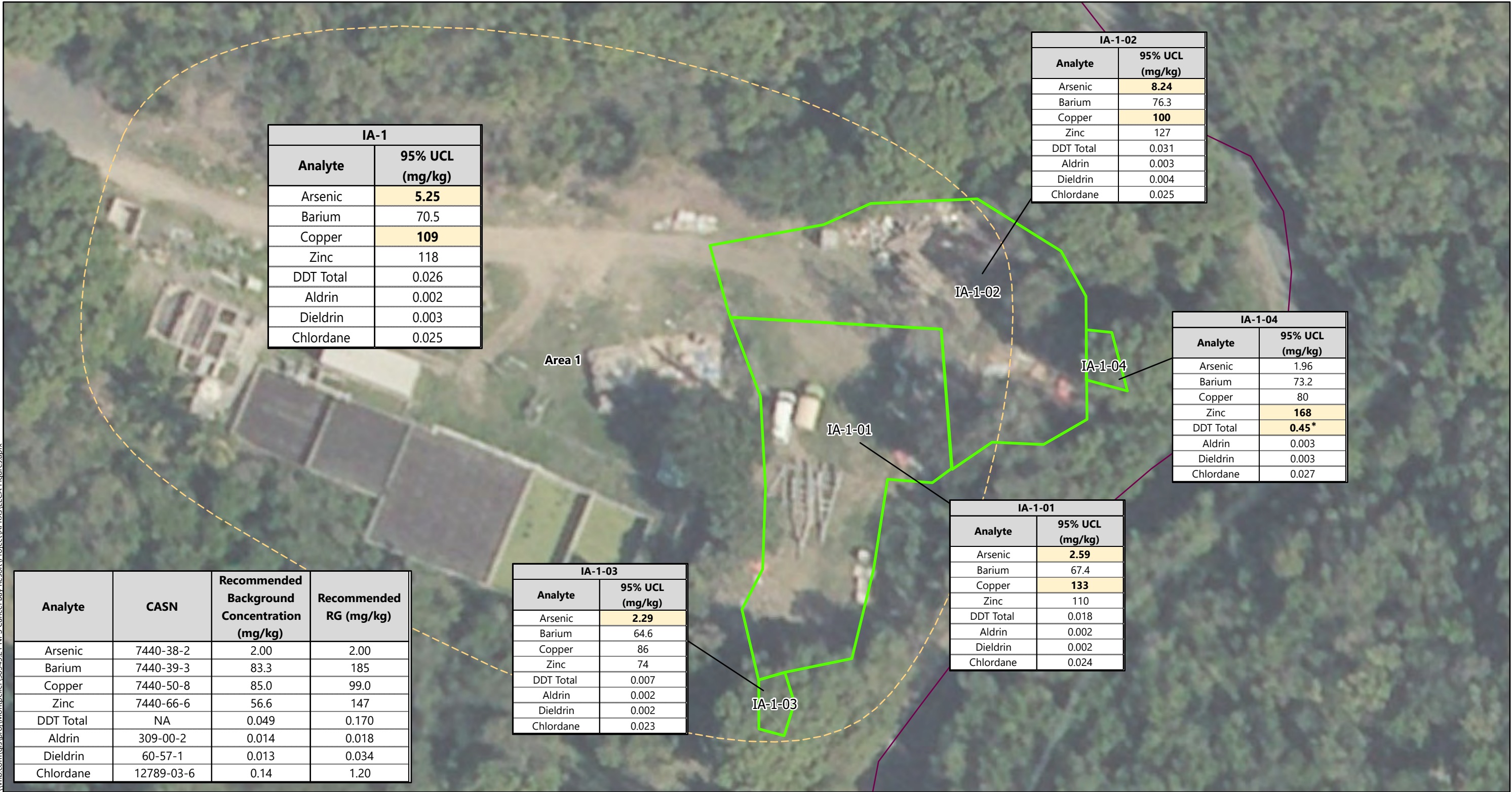
Cross Sections A-A' & B-B'
Caneel Bay Resort Site
U.S. Virgin Islands
58345.21

Figure 4

04/02/2021



I:\vhb.com\dis\proj\Montpelier\58345-21 NPS Caneel Bay Resort\Project\APR\X\EECA Figures.aprx



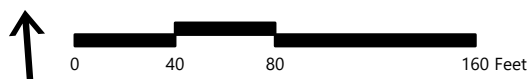
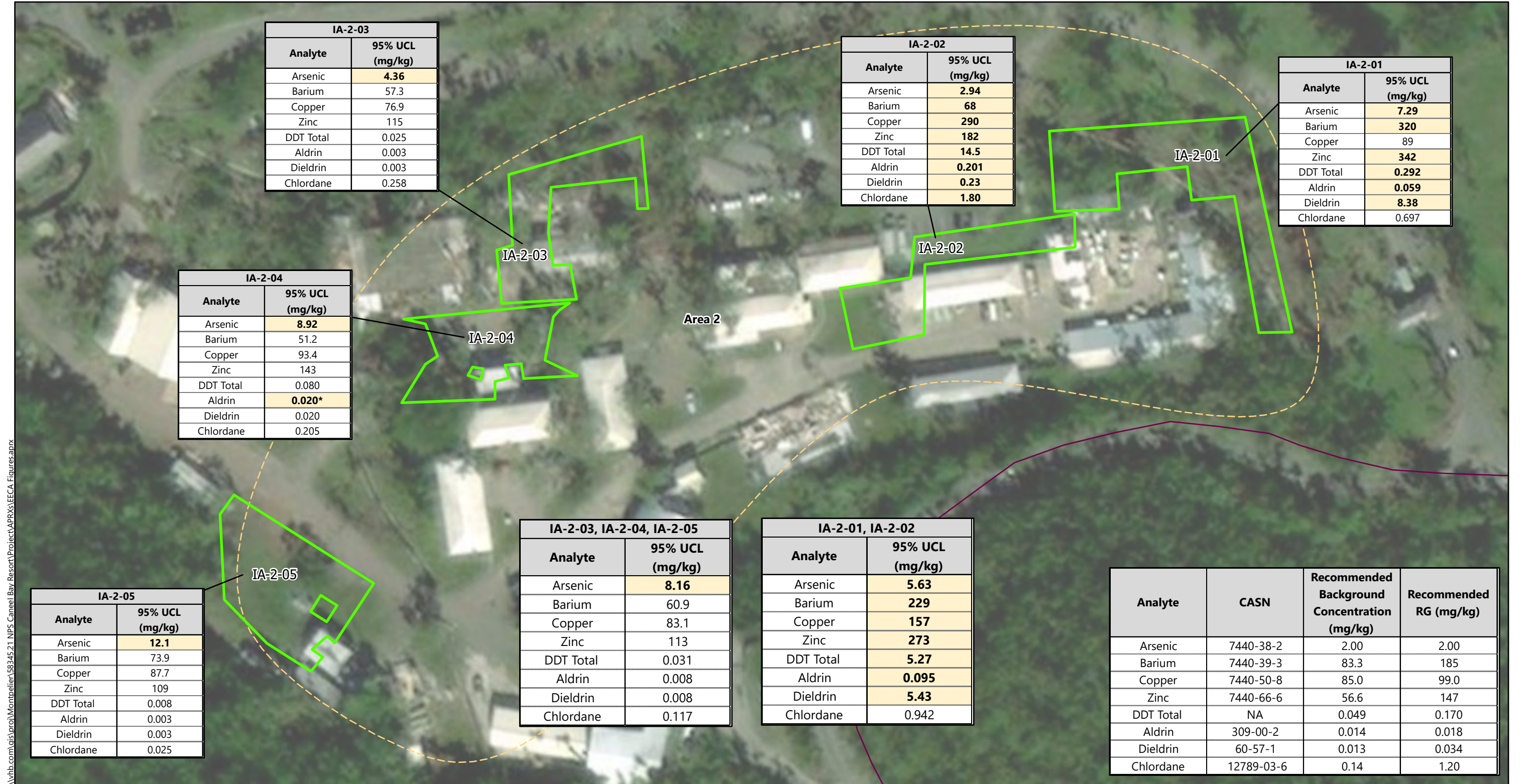
- Surface Soil Decision Unit
- Primary Investigation Areas
- Caneel Bay Resort

Caneel Bay Resort Site

VIIS, St. John, USVI

Source Info:
Base map from ESRI/World Imagery (2017)
Notes:
1. Shaded cell and bolded value indicates the calculated 95% UCL exceeds the Recommended RG.
2. "DDT Total" is the sum of DDT and its breakdown products (DDD and DDE).
3. *DDT, DDE, and DDD were not detected in IA-1-04. The calculated 95% UCL exceeds the Recommended RG due to an elevated reporting limit in one replicate sample.
4. "UCL" = upper confidence level of mean

Removal Goal Exceedances in Surface Soil - Area 1



- Surface Soil Decision Unit
- Primary Investigation Areas
- Caneel Bay Resort

Caneel Bay Resort Site

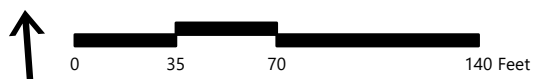
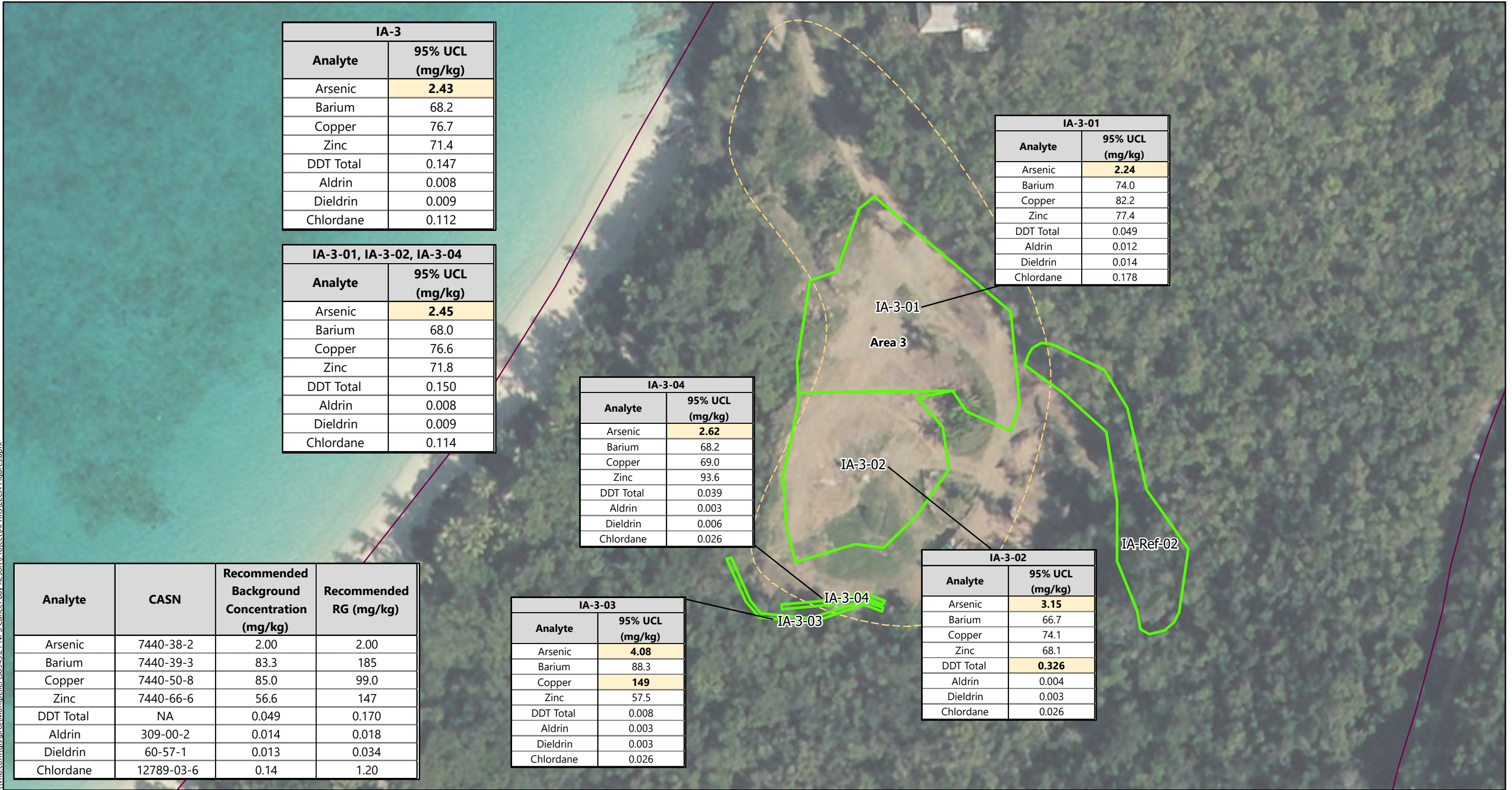
VIIS, St. John, USVI

- Source Info:
Base map from ESRI/World Imagery (2017)
- Notes:
- Shaded cell and bolded value indicates the calculated 95% UCL exceeds the Recommended RG.
 - "DDT Total" is the sum of DDT and its breakdown products (DDD and DDE).
 - *Aldrin was not detected in IA-2-04. The calculated 95% UCL exceeds the Recommended RG due to an elevated reporting limit in one replicate sample.
 - "UCL" = upper confidence level of mean

Removal Goal Exceedances in Surface Soil - Area 2



I:\vhb.com\dis\proj\Montpelier\58345-21 NPS Caneel Bay Resort\Project\APR\X\EECA Figures.aprx



- Surface Soil Decision Unit
- Primary Investigation Areas
- Caneel Bay Resort

Caneel Bay Resort Site

VIIS, St. John, USVI

Source Info:
Base map from ESRI/World Imagery (2017)
Notes:
1. Shaded cell and bolded value indicates the calculated 95% UCL exceeds the Recommended RG.
2. "DDT Total" is the sum of DDT and its breakdown products (DDD and DDE).
3. "UCL" = upper confidence level of mean

Removal Goal Exceedances in Surface Soil - Area 3



\\vhb.com\dis\proj\Montpelier\58345\21 NPS Caneel Bay Resort\Project\APR\Xs\EECA Figures.aprx



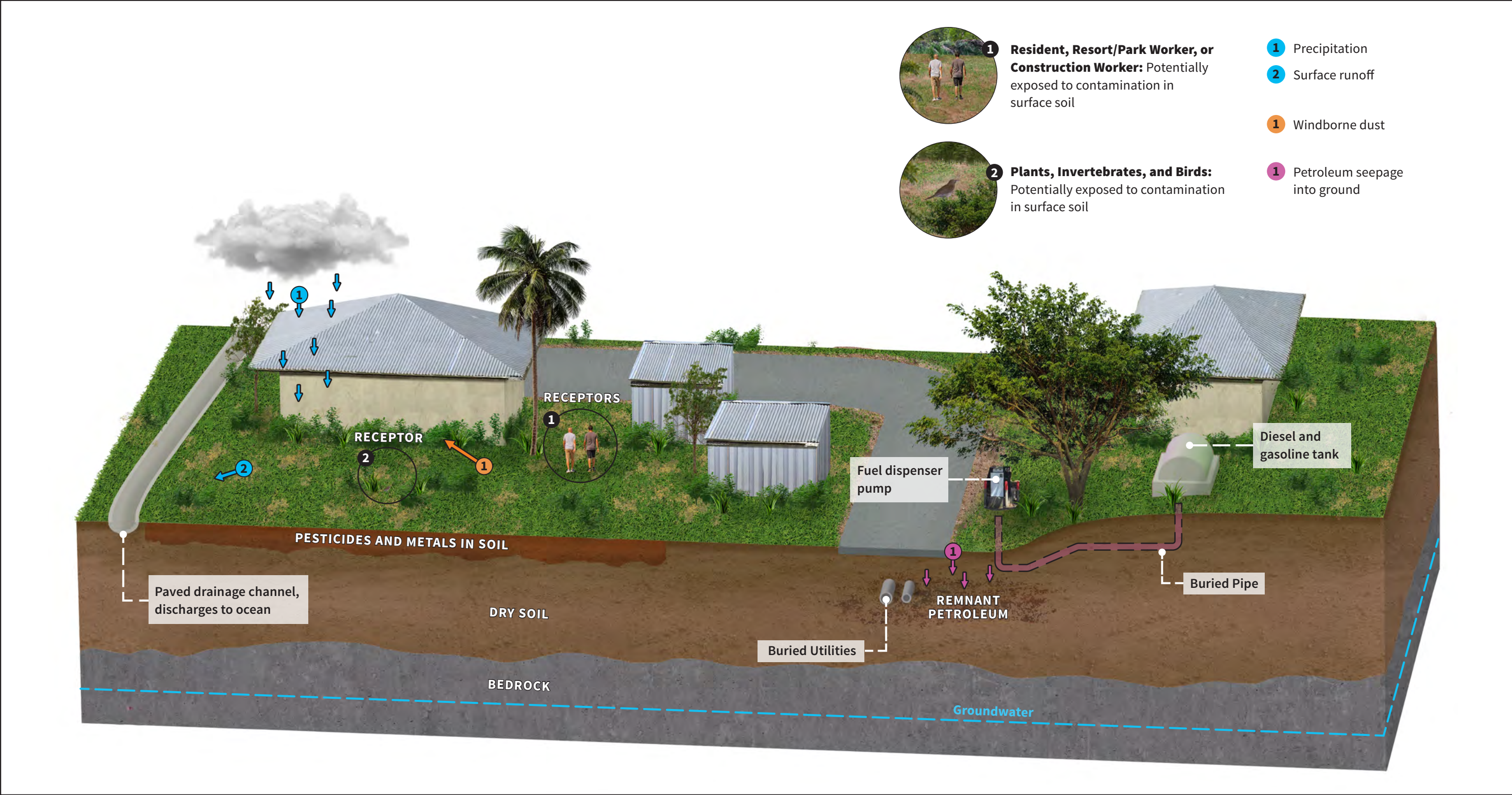
- Surface Soil Decision Unit
- Primary Investigation Areas
- Caneel Bay Resort
- Soil Sample Location

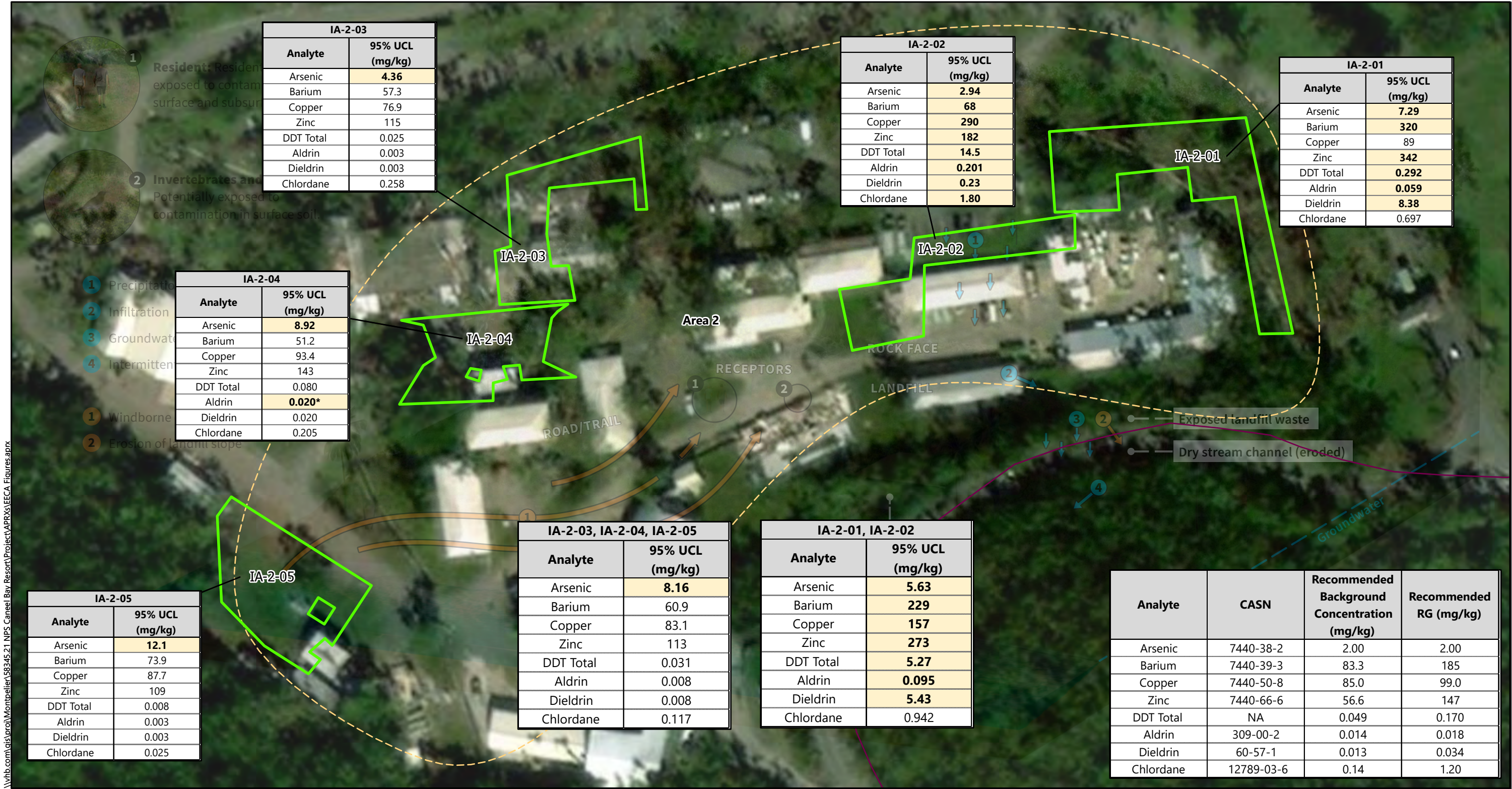
Caneel Bay Resort Site

VIIS, St. John, USVI

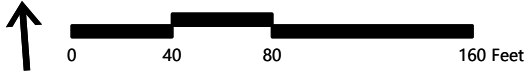
Source Info:
Base map from ESRI/World Imagery (2017)
Notes:
1. Shaded cell and bolded value indicates the calculated 95% UCL exceeds the Recommended RG.
2. "DDT Total" is the sum of DDT and its breakdown products (DDD and DDE).
3. "ftbgs" = feet below ground surface
4. "UCL" = upper confidence level of mean

Removal Goal Exceedances in Subsurface Soil - Area 1





\\vhb.com\gis\proj\Montpelier\58345-21 NPS Caneel Bay Resort\Project\APR\X\EECA Figures.aprx



- Surface Soil Decision Unit
- Primary Investigation Areas

Source Info:
Base map from ESRI/World Imagery (2017)
Notes:
1. Shaded cell and bolded value indicates the calculated 95% UCL exceeds the Recommended RG.
2. "DDT Total" is the sum of DDT and its breakdown products (DDD and DDE).

Removal Goal Exceedances
Site Surface Soil - Area 2