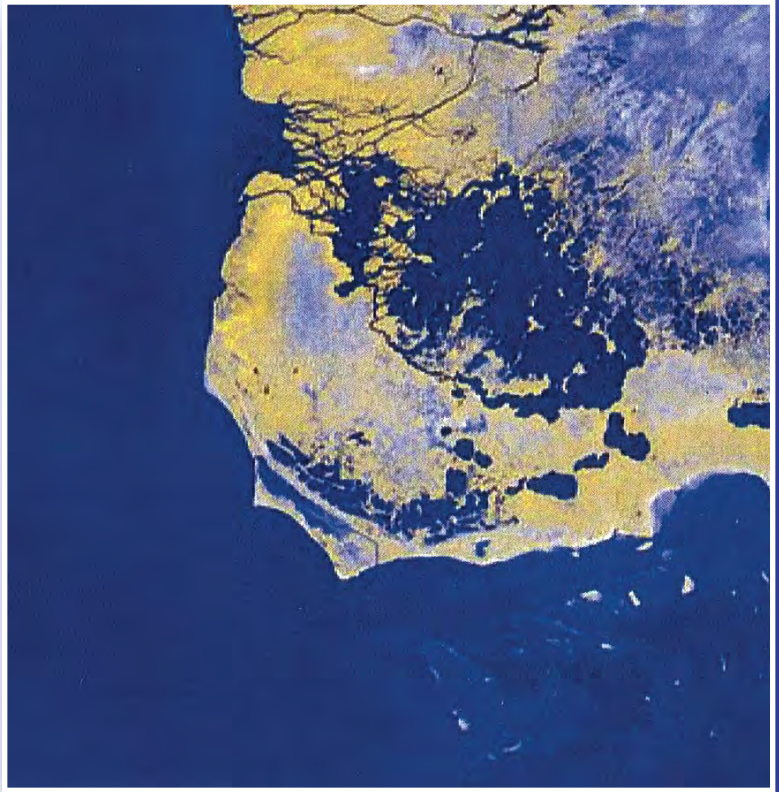


## Chapter 5

### References





## CHAPTER 5: REFERENCES

**Ault, Jerald S., Steven G. Smith, David B. McClellan, Natalia Zurcher, Ashley McCrea, Nathan R. Vaughan, and James A. Bohnsack**

- 2008      Aerial Survey of Boater Use in Everglades National Park Marine Waters – Florida Bay and Ten Thousand Islands. NOAA Technical Memorandum NMFS-SEFSC-581. U.S. Department of Commerce, National Oceanic and Atmospheric Administration, National Marine Fisheries Service, Southeast Fisheries Science Center. Miami, Florida.

**Avery, G.N., and L.L. Loope**

- 1983      Plants of the Everglades National Park: a preliminary Checklist of Vascular Plants. South Florida Research Center Report T-574. Everglades National Park. Fourth Edition 1999 edited by R.G. Reimus

**Coile, N.C., and M.A. Garland.**

- 2003      *Notes on Florida's endangered and threatened plants* (29 January 2005). Florida Department of Agriculture & Consumer Services, Division of Plant Industry, Florida.

**Crisfield, Elizabeth, Deanna Greco, Michael Martin, and Linda York**

- 2005      Evaluation of Restoration Alternatives for the Cape Sable Canals at Everglades National Park (EVER).

**Economics Research Associates (ERA)**

- 2007      ESRI Business Analyst. Available at:  
<http://www.esri.com/software/bao/index.html>.

**Federal Register**

68 FR 15674 or Federal Register 68:15674  
73 FR 70290 or Federal Register 73:70290

**Federal Emergency Management Agency (FEMA)**

- 1996      Geographic Information System (GIS) data layers  
<http://www.gismaps.fema.gov/>

**FishBase**

- 2009      Available at: <http://www.fishbase.org>

**Florida Bay Science Program**

- 2003      A Synthesis of Research on Florida Bay. Compiled for the Science Oversight Panel with support from USGS, Gainesville, Florida. Available at:  
<http://www.aoml.noaa.gov/sfp/documents.shtml>

**Florida Department of Environmental Protection (FDEP)**

- 2004      Uniform Wetland Mitigation Assessment Method. Available at:  
<http://www.dep.state.fl.us/water/wetlands/mitigation/umam.htm>

- 2007 Outstanding Florida Waters. Available at:  
[www.dep.state.fl.us/water/wqssp/ofw.htm](http://www.dep.state.fl.us/water/wqssp/ofw.htm)
- 2009 Florida Circumnavigational Saltwater Paddling Trail. Available at:  
<http://www.dep.state.fl.us/gwt/paddling/saltwater.htm>

#### **Florida Fish and Wildlife Conservation Commission**

- 2004 Florida's Endangered Species, Threatened Species, and Species of Special Concern.

#### **Florida Geographic Data Library**

- 2004 Geographic Information System (GIS) data layers. Available at:  
<http://www.fgdl.org/>

#### **Gaby, Ronald, Mark P. McMahon, Frank J. Mazzotti, W. Neil Gillies, and J. Ross Wilcox**

- 1985 Ecology of a Population of *Crocodylus acutus* at a Power Plant Site in Florida. *Journal of Herpetology* 19(2): 189-198.

#### **Gann, G.D., K.A. Bradley, and S.W. Woodmansee.**

- 2002 Rare Plants of Florida: Their History, Conservation, and Restoration. The Institute for Regional conservation: Miami.

#### **Geological Society of America**

- 2002 The nature of transgression: Cape Sable, Florida. Available at:  
[http://gsa.confex.com/gsa/2002AM/finalprogram/abstract\\_39729.htm](http://gsa.confex.com/gsa/2002AM/finalprogram/abstract_39729.htm)

#### **Gulf of Mexico Fishery Management Council (GMFMC)**

- 1998 Generic Amendment for Addressing Essential Fish Habitat Requirements in the following Fishery Management Plans of the Gulf of Mexico: *Shrimp Fishery of the Gulf of Mexico, United States Waters; Red Drum Fishery of the Gulf of Mexico; Reef Fish Fishery of the Gulf of Mexico; Coastal Migratory Pelagic Resources (Mackerels) in the Gulf of Mexico and South Atlantic; Stone Crab Fishery of the Gulf of Mexico; Spiny Lobster in the Gulf of Mexico and South Atlantic; Coral and Coral Reefs of the Gulf of Mexico*
- 2004 Environmental Impact Statement for the Generic Essential Fish Habitat Amendment to the fishery management plans of the Gulf of Mexico
- 2005 Generic Amendment Number 3 for Addressing Essential Fish Habitat Requirements, Habitat Areas of Particular Concern, and Adverse Effects of Fishing in the following Fishery Management Plans of the Gulf of Mexico: *Shrimp Fishery of the Gulf of Mexico, United States Waters; Red Drum Fishery of the Gulf of Mexico; Reef Fish Fishery of the Gulf of Mexico; Coastal Migratory Pelagic Resources (Mackerels) in the Gulf of Mexico and South Atlantic; Stone Crab Fishery of the Gulf of Mexico; Spiny Lobster in the Gulf of Mexico and South Atlantic; Coral and Coral Reefs of the Gulf of Mexico*
- 2009 Gulf of Mexico Fishery Management Council (GMFMC) Website. Available at:  
<http://www.gulfcouncil.org/>

#### **Hamilton, Sam D. (Ed.)**

- 1999 American Crocodile (*Crocodylus acutus*). Multi-Species Recovery Plan for South Florida. United States Fish and Wildlife Service. p. 505-520.

**Harmon, David**

- 2006 People, Places, and Parks: Proceedings of the 2005 George Wright Society Conference on Parks, Protected Areas, and Cultural Sites. *Hancock, Michigan: The George Wright Society.*

**Hipes, D., D.R. Jackson, K. NeSmith, D. Prentiss, and K. Brandt**

- 2000 Field Guide to the Rare Animals of Florida. Florida Natural Areas Inventory, Tallahassee.

**Intergovernmental Panel on Climate Change (IPCC)**

- 2001 Watson, R.T. and the Core Writing Team (Eds.). Climate Change 2001: Synthesis Report. A Contribution of Working Groups I, II, and III to the Third Assessment Report of the Intergovernmental Panel on Climate Change. Cambridge University Press, Cambridge, United Kingdom, and New York, NY, USA, 398 pp. Available at:  
<http://www.ipcc.ch/ipccreports/tar/vol4/english/index.htm>
- 2007a Core Writing Team, Pachauri, R.K and Reisinger, A. (Eds.). IPCC, 2007: Climate Change 2007: Synthesis Report. Contribution of Working Groups I, II and III to the Fourth Assessment Report of the Intergovernmental Panel on Climate Change IPCC, Geneva, Switzerland, 104 pp. Available at:  
[http://www.ipcc.ch/pdf/assessment-report/ar4/syr/ar4\\_syr.pdf](http://www.ipcc.ch/pdf/assessment-report/ar4/syr/ar4_syr.pdf)
- 2007b Technical Summary. In: Climate Change 2007: The Physical Science Basis. Contribution of Working Group I to the Fourth Assessment Report of the Intergovernmental Panel on Climate Change. Cambridge University Press, Cambridge, United Kingdom and New York, N.Y., USA.
- 2008 Intergovernmental Panel on Climate Change Website – <http://www.ipcc.ch/>

**Kushlan, James A. and Frank J. Mazzotti**

- 1989a Historic and Present Distribution of the American Crocodile in Florida. *Journal of Herpetology* 23(1): 1-7.
- 1989b Population Biology of the American Crocodile. *Journal of Herpetology* 23(1): 7-21.

**Littlejohn, Margaret**

- 2002 Everglades National Park Visitor Study, Visitor Services Project Report 131.

**Luer, George M.**

- 1989 Calusa Canals in Southwestern Florida: Routes of Tribute and Exchange. *The Florida Anthropologist* 42:89-130.

**Mazzotti, Frank J.**

- 1989 Factors Affecting the Nesting Success of the American Crocodile, *Crocodylus acutus*, in Florida Bay. *Bulletin of Marine Science* 44(1): 220-228.
- 1999 The American Crocodile in Florida Bay. *Estuaries* 22(28): 552-561.

**Mazzotti, Frank J. and M.S. Cherkiss**

- 1986 Field and laboratory observations on the effects of high temperature and salinity on hatchling *Crocodylus acutus*. *Herpetologica* 42(2):191-196.

- 1989 Factors affecting the nesting success of the American crocodile (*Crocodylus acutus*) in Florida Bay. Bulletin of Marine Science 44(1):220-228.
- 2003 Status and Conservation of the American Crocodile in Florida: Recovering an Endangered Species While Restoring an Endangered Ecosystem. University of Florida, Fort Lauderdale Research and Education Center. Tech. Rep. 2003. 41 pp.

#### **Miami-Dade County Climate Change Advisory Task Force (CCATF)**

- 2008 Second Report and Initial Recommendations. Presented to The Miami-Dade Board of County Commissioners. Available at: [http://www.miamidade.gov/derm/library/08-10-04\\_CCATF\\_BCC\\_Package.pdf](http://www.miamidade.gov/derm/library/08-10-04_CCATF_BCC_Package.pdf)

#### **Miami-Dade County**

- 2009 Climate Change. Miami-Dade County Website. Available at: [http://miamidade.gov/derm/climate\\_change.asp](http://miamidade.gov/derm/climate_change.asp)

#### **National Oceanic and Atmospheric Administration (NOAA)**

- 2003 Essential Fish Habitat: A Marine Fish Habitat Conservation Mandate for Federal Agencies. Available at: <http://www.nmfs.noaa.gov/>
- 2009a Essential fish habitat: habitat area of particular concern. Office of Habitat Concern. Available at: <http://www.nmfs.noaa.gov/habitat/habitatprotection/>
- 2009b EFH Statutes & Regulations. Available at: [http://www.nmfs.noaa.gov/habitat/habitatprotection/efh/stat\\_reg\\_index.htm](http://www.nmfs.noaa.gov/habitat/habitatprotection/efh/stat_reg_index.htm)

#### **National Oceanic and Atmospheric Administration Coastal Services Center (NOAA CSC)**

- 2000 Bathymetric contours for the state of Florida and surrounding areas. <http://www.csc.noaa.gov/>

#### **National Parks Conservation Association (NPCA)**

- 2007 Unnatural Disaster: Global Warming and Our National parks. 1300 19<sup>th</sup> Street Suite 300, Washington, DC 20036. Accessed at: [http://www.npca.org/globalwarming/unnatural\\_disaster.pdf](http://www.npca.org/globalwarming/unnatural_disaster.pdf)

#### **National Park Service, U.S. Department of the Interior (NPS)**

- 1999 Director's Order #41: Wilderness Preservation Management.
- 2000 Director's Order #42: Accessibility for Visitors with Disabilities in National Park Service Programs and Services. Available at: [http://www.nps.gov/access/directors\\_order.htm](http://www.nps.gov/access/directors_order.htm)
- 2001a Handbook, *Conservation Planning, Environmental Impact Analysis and Decision Making*
- 2001b Everglades National Park Strategic Plan 2001-2005. Available on the internet: <http://www.nps.gov/ever/parkmgmt/upload/everstrategicplan.pdf>
- 2002 Everglades National Park. Available on the internet: <http://www.everglades.national-park.com/infor.htm>
- 2003 Environmental Assessment for Flamingo wastewater system improvements. Available at: <http://www.nps.gov/ever/gmp/finalea191a.8.12.31.pdf>

- 2005 Comprehensive Interpretive Plans: Steps to a comprehensive interpretive plan. Available at: <http://www.nps.gov/nero/interpanded/cit.htm>
- 2006a *NPS Management Policies 2006*. Available at: <http://www.doi.gov/initiatives/npsmanagement.html>
- 2006b Wayside Exhibit Plan. Available at: <http://www.nps.gov/hfc/products/waysides/contents.htm>
- 2006c *Director's Order #9: Law Enforcement Program*. Available at: <http://www.nps.gov/policy/DOrders/DOrder9.html>
- 2006d *Reference Manual #9*. Available at: <http://classicinside.nps.gov/documents/RM-9.pdf>
- 2007a Nature and Science- Coastal Geology in our National Parks: Global Climate Change and Sea Level Rise. Accessed at: [http://www.nature.nps.gov/geology/coastal/gw\\_slr.cfm](http://www.nature.nps.gov/geology/coastal/gw_slr.cfm)
- 2007b Everglades National Park: Pioneer Settlement. Available at: <http://www.nps.gov/ever/historyculture/pioneersettlement.htm>
- 2008a Superintendent's Compendium. Available at: [http://www.nps.gov/ever/parkmgmt/upload/EVER%20Compendium%202008%20\\_FINAL\\_.pdf](http://www.nps.gov/ever/parkmgmt/upload/EVER%20Compendium%202008%20_FINAL_.pdf)
- 2008b Everglades National Park Statistics. Available at: <http://inside.nps.gov/www.nature.nps.gov/stats>
- 2009a Cultural Assessment of the Old Ingraham Highway and Homestead, East Cape and Buttonwood Canals, Everglades National Park, Florida, 2009
- 2009b Non-native Species in Everglades National Park. Available at: <http://nps.gov/archive/ever/eco/exotics.htm>
- 2009c Everglades National Park Species Checklists. Available at: <http://www.nps.gov/ever/naturescience/index.htm>
- 2009d Everglades National Park Habitats. Available at: <http://www.nps.gov/ever/naturescience/naturalfeaturesandecosystems.htm>

**Paige, J.C.**

- 1986 Historic Resource Study for Everglades National Park. National Park Service.

**Pannell, S.**

- 2006 Reconciling Nature and Culture in a Global Context: Lessons from the World Heritage List. James Cook University

**Price, R. M., Z. Top, J. D. Happell, and P. K. Swart**

- 2003 Use of tritium and helium to define groundwater flow conditions in Everglades National Park, Water Resource Res., 39(9), 1267, doi: 10.1029/2002WR001929.

**Simpfendorfer, C.A.**

- 2003 Abundance, movement and habitat use of the smalltooth sawfish. Final Report to the National Marine Fisheries Service, Grant number WC133F-02-SE-0247. Mote Marine Laboratory Technical Report (929).

**Simpfendorfer, C.A. and T.R. Wiley**

- 2005      Determination of the distribution of Florida's remnant sawfish population and identification of areas critical to their conservation. Final Report. Florida Fish and Wildlife Conservation Commission, Tallahassee, Florida.

**Smithsonian National Museum of Natural History**

- 2002      North American Mammals. Based on The Smithsonian Book of North American Mammals, by Don E. Wilson and Sue Ruff, Smithsonian Institution Press (1999) and Mammals of North America, by Roland W. Kays and Don E. Wilson, Princeton University Press (2002). Available at:  
<http://www.mnh.si.edu/mna/main.cfm>

**Southeastern Environmental Research Center (SERC)**

- 2005      South Florida Coastal Water Quality Monitoring Network. FY 2005 Cumulative Report to the South Florida Water Management District. Prepared by Joseph N. Boyer and Henry O. Briceno, Florida International University.

**South Florida Water Management District**

- 2005      Geographic Information System (GIS) data layers  
<http://my.sfwmd.gov/gisapps/sfwmdxwebdc/dataview.asp>

**Taylor, Robert C.**

- 1985      Everglades National Park Archeological Survey: Season 3. National Park Service, Southeast Archeological Center, Tallahassee.

**Tebeau, Charlton W.**

- 1963      *They Lived in the Park: The Story of Man in Everglades National Park*. University of Miami Press, Coral Gables.
- 1968      Man in the Everglades. Coral Gables, Florida: University of Miami Press. Library of Congress Catalog Card Number: 68-17768
- 1981      History of Florida (Paperback)

**Technical Information Center**

- 2004      Joint National Park Service and Bureau of Reclamation Examination, Condition Surveys, and Literature Search and Review and Site Visit, Buttonwood Canal Dam, East Cape Canal Plug, Homestead Canal Plug. Bureau of Reclamation. Department of the Interior, Denver, CO.

**Trexler, J.C, W.F. Loftus, F. Jordan, J.J. Lorenz, J.H. Chick, and R.M. Kobza**

- 2000      Empirical Assessment of Fish Introductions in Subtropical Wetlands: An Evaluation of Contrasting Views. Biological Invasions 2: 265- 277.

**UNESCO**

- 2005      Operational Guidelines for the Implementation of the World Heritage Convention. UNESCO World Heritage Centre. Paris. Page 83.



**URS Corporation**

- 2007 URS Corporation's Preliminary Engineering Analysis for the restoration of the Cape Sable dams.

**U.S. Fish and Wildlife Service**

- 2007 National Wetland Inventory (NWI) Geographic Information System (GIS) data layers. <http://www.fws.gov/data/>

**U.S. Geological Survey (USGS)**

- 2001 A GAP Analysis of Florida, 2001 Final Report. Florida GAP Analysis Project
- 2004 South Florida Information Access. Available at:  
<http://sofia.usgs.gov/publications/reports/rali/urbantrend.html>.
- 2005 Manatee biology, ecology, and adaptive management. Available at:  
<http://cars.er.usgs.gov/basis/Projects/projects.html>

**Van Meter, Victoria Brook**

- 1992 Florida's Alligators and Crocodiles. Florida Power and Light Company. Miami, Florida.

**Wanless, Hal and B. Vlaswinkel**

- 2005 Coastal Landscape and Channel Evolution Affecting Critical Habitats at Cape Sable, Everglades National Park, Florida.

**Wheeler, Ryan J.**

- 1995 The Ortona Canals: Aboriginal Canal Hydraulics and Engineering. *The Florida Anthropologist* 48:265-281.

**Wunderlin, R.P., and B.F. Hansen**

- 2002 *Atlas of Florida vascular plants*. University of South Florida, Tampa.  
<http://www.florida.plantatlas.usf.edu/>



## Chapter 6

### Glossary of Terms





## CHAPTER 6: GLOSSARY OF TERMS

**Affected Environment** — The existing environment to be affected by a proposed action and alternatives.

**Alternatives** — Different options for taking action.

**Best Management Practices** — Methods that have been determined to be the most effective, practical means of preventing or reducing pollution or other adverse environmental impacts.

**Chickees** — Small wooden platforms, with roofs and a self-contained toilet, used for backcountry camping over water.

**Contributing Resource** — A building, site, structure, or object that adds to the historic significance of a property or district.

**Council on Environmental Quality (CEQ)** — Established by Congress within the Executive Office of the President with passage of the *National Environmental Policy Act of 1969*. CEQ coordinates federal environmental efforts and works closely with agencies and other White House offices in the development of environmental policies and initiatives.

**Cultural Resources** — Prehistoric and historic districts, sites, buildings, objects, or any other physical evidence of human activity considered important to a culture, subculture, or community for scientific, traditional, religious, or any other reason.

**Cumulative Impacts** — Under NEPA regulations, the incremental environmental impact or effect of an action together with the effects of past, present, and reasonably foreseeable future actions, regardless of what agency or person undertakes such other actions (40 CFR Part 1508.7).

**Decibels** — A unit of relative sound loudness, electric voltage, or current equal to ten times the common logarithm of the ratio of two readings.

**Enabling Legislation** — National Park Service legislation setting forth the legal parameters by which each park may operate.

**Endangered Species** — “...any species (including subspecies or qualifying distinct population segment) that is in danger of extinction throughout all or a substantial portion of its range (ESA Section 3(6)).” The lead federal agency, U.S. Fish and Wildlife Service, for the listing of a species as endangered is responsible for reviewing the status of the species on a five-year basis.

**Endangered Species Act (ESA) (16 U.S.C. 1531 et seq.)** — An Act to provide a means whereby the ecosystems upon which endangered species and threatened species depend may be conserved and to provide a program for the conservation of such endangered species and threatened species.

**Environmental Assessment (EA)** — An environmental analysis prepared pursuant to the *National Environmental Policy Act* to determine whether a federal action would significantly affect the environment and thus require a more detailed environmental impact statement (EIS).

**Executive Order** — Official proclamation issued by the President that may set forth policy or direction or establish specific duties in connection with the execution of federal laws and programs.

**Finding of No Significant Impact (FONSI)** — A document prepared by a federal agency showing why a proposed action would not have a significant impact on the environment and thus would not require preparation of an Environmental Impact Statement. A FONSI is based on the results of an Environmental Assessment.

**Floodplain** — The flat or nearly flat land along a river or stream or in a tidal area that is covered by water during a flood.

**Impacts (beneficial, adverse)** - The effect on a resource or value. Beneficial impacts are favorable and adverse impacts are unfavorable.

**National Environmental Policy Act (NEPA)** — The Act as amended articulates the federal law that mandates protecting the quality of the human environment. It requires federal agencies to systematically assess the environmental impacts of their proposed activities, programs, and projects including the “no action” alternative of not pursuing the proposed action. NEPA requires agencies to consider alternative ways of accomplishing their missions in ways which are less damaging to the environment.

**National Historic Preservation Act of 1966 (16 U.S.C. 470 et seq.)** — An Act to establish a program for the preservation of historic properties throughout the nation, and for other purposes, approved October 15, 1966 [Public Law 89-665; 80 STAT. 915; 16 U.S.C. 470 as amended by Public Law 91-243, Public Law 93-54, Public Law 94-422, Public Law 94-458, Public Law 96-199, Public Law 96-244, Public Law 96-515, Public Law 98-483, Public Law 99-514, Public Law 100-127, and Public Law 102-575].

**National Register of Historic Places (National Register)** — A register of districts, sites, buildings, structures, and objects important in American history, architecture, archaeology, and culture, maintained by the Secretary of the Interior under authority of Section 2(b) of the *Historic Sites Act of 1935* and Section 101(a)(1) of the *National Historic Preservation Act of 1966*, as amended.

**Organic Act** — Enacted in 1916, this Act commits the National Park Service to making informed decisions that perpetuate the conservation and protection of park resources unimpaired for the benefit and enjoyment of future generations.

**Scoping** — Scoping, as part of NEPA, requires examining a proposed action and its possible effects; establishing the depth of environmental analysis needed; determining analysis procedures, data needed, and task assignments. The public is encouraged to participate and submit comments on proposed projects during the scoping period.

**Silt Curtain** – A temporary barrier of geotextile material used to contain sediments within a defined zone in the aquatic environment.

**Threatened Species** — Any species that is likely to become an endangered species within the foreseeable future throughout all or a significant portion of its range (ESA Section 3(20)).

**Wetlands** —Those areas that are inundated or saturated by surface or ground water at a frequency and duration sufficient to support, and that under normal circumstances do support, a prevalence of vegetation typically adapted for life in saturated soil conditions. Wetlands generally include swamps, marshes, bogs, and similar areas.

## Chapter 7

### Acronyms and Abbreviations







## **CHAPTER 7: ACRONYMS AND ABBREVIATIONS**

ABAAS	Architectural Barriers Act Accessibility Standards
AIRFA	American Indian Religious Freedom Act
BMPs	Best Management Practices
CEQ	Council on Environmental Quality
CAA	Clean Air Act
CCATF	County Climate Change Advisory Task Force
CEQ	Council on Environmental Quality
CERP	Comprehensive Everglades Restoration Plan
CFR	Code of Federal Regulations
CY	Cubic Yard
CZMA	Coastal Zone Management Act
CZMP	Coastal Zone Management Programs
dB	Decibels
DTM	Digital Terrain Model
EA	Environmental Assessment
EFH	Essential Fish Habitat
EIS	Environmental Impact Statement
EO	Executive Order
FCMP	Florida Coastal Management Program
FDACS	Florida Department of Agriculture and Consumer Services
FDEP	Florida Department of Environmental Protection
FDOT	Florida Department of Transportation
FEMA	Federal Emergency Management Agency
FIU	Florida International University
FLUCFCS	Florida Land Use, Cover and Forms Classification System
FMP	Fishery Management Plan
GMFMC	Gulf of Mexico Fisheries Management Council
GMP	General Management Plan
IPCC	Intergovernmental Panel on Climate Change
LED	Light-Emitting Diodes
LF	Linear Feet
NEPA	National Environmental Policy Act
NAGPRA	Native American Graves Protection and Repatriation Act

NHL	National Historic Landmark
NHPA	National Historic Preservation Act
NPCA	National Parks Conservation Association
NPS	National Park Service
NRHP	National Register of Historic Places
NTU	Nephelometric Turbidity Units
NWI	National Wetland Inventory
OFW	Outstanding Florida Water
SAS	Surficial Aquifer System
SAV	Submerged Aquatic Vegetation
SERC	Southeast Environmental Research Center
SF	Square Foot
SFWMD	South Florida Water Management District
SHPO	State Historic Preservation Officer
SOF	Statement of Findings
UMAM	Uniform Mitigation Assessment Method
UNEP	United Nations Environment Program
USACE	U.S. Army Corps of Engineers
USEPA	U.S. Environmental Protection Agency
USGS	U.S. Geological Survey
USFWS	U.S. Fish and Wildlife Service
VA/CBA	Value Analysis/Choosing By Advantages
WMO	World Meteorological Organization