



United States Department of the Interior



NATIONAL PARK SERVICE
Glen Canyon National Recreation Area
Rainbow Bridge National Monument
P.O. Box 1507
Page, Arizona 86040
(928) 608-6200

In 2019, the National Park Service (NPS) converted an existing user-created trackway network atop Stud Horse Mesa into a trail network for hiking. The mesa is in Arizona and Utah. The development of the hiking trail was undertaken with cooperation from the Bureau of Land Management (BLM) and a private entity, as a portion of the trail network lies within the jurisdiction of the BLM and upon land that is privately owned. The NPS is now pursuing authorization to allow bicycles on this existing trail network.

Currently, Glen Canyon National Recreation Area (NRA) has no trails open to cyclists, yet this is an extremely popular activity amongst visitors, within the local community and throughout the region. Providing a multi-use trail that is open to hikers and cyclists would expand recreational opportunities in the area and could potentially benefit the local economy.

In order to authorize the use of bicycles on an existing trail network, the NPS is required to complete an environmental assessment or environmental impact statement that evaluates the effects of bicycle use in the park and on the specific trail (36 CFR § 4.30 (2)). Glen Canyon NRA has begun developing an environmental assessment to analyze bicycle use on the Stud Horse trail network. The environmental assessment will be prepared in compliance with the National Environmental Policy Act (NEPA) in order to provide decision-making framework that effectively evaluates potential issues and impacts to the area's resources and values.

We welcome formal comment on the project during the initial public scoping period and after the release of the environmental assessment. The project is currently in the scoping phase and comments may be submitted online at <https://parkplanning.nps.gov/StudHorseTrails> until December 16, 2022 or by mail to:

Superintendent
Glen Canyon National Recreation Area
PO Box 1507
Page, AZ 86040

All comments will be considered during preparation of the environmental assessment. Comments will not be accepted over the phone, by fax, e-mail, or in person.



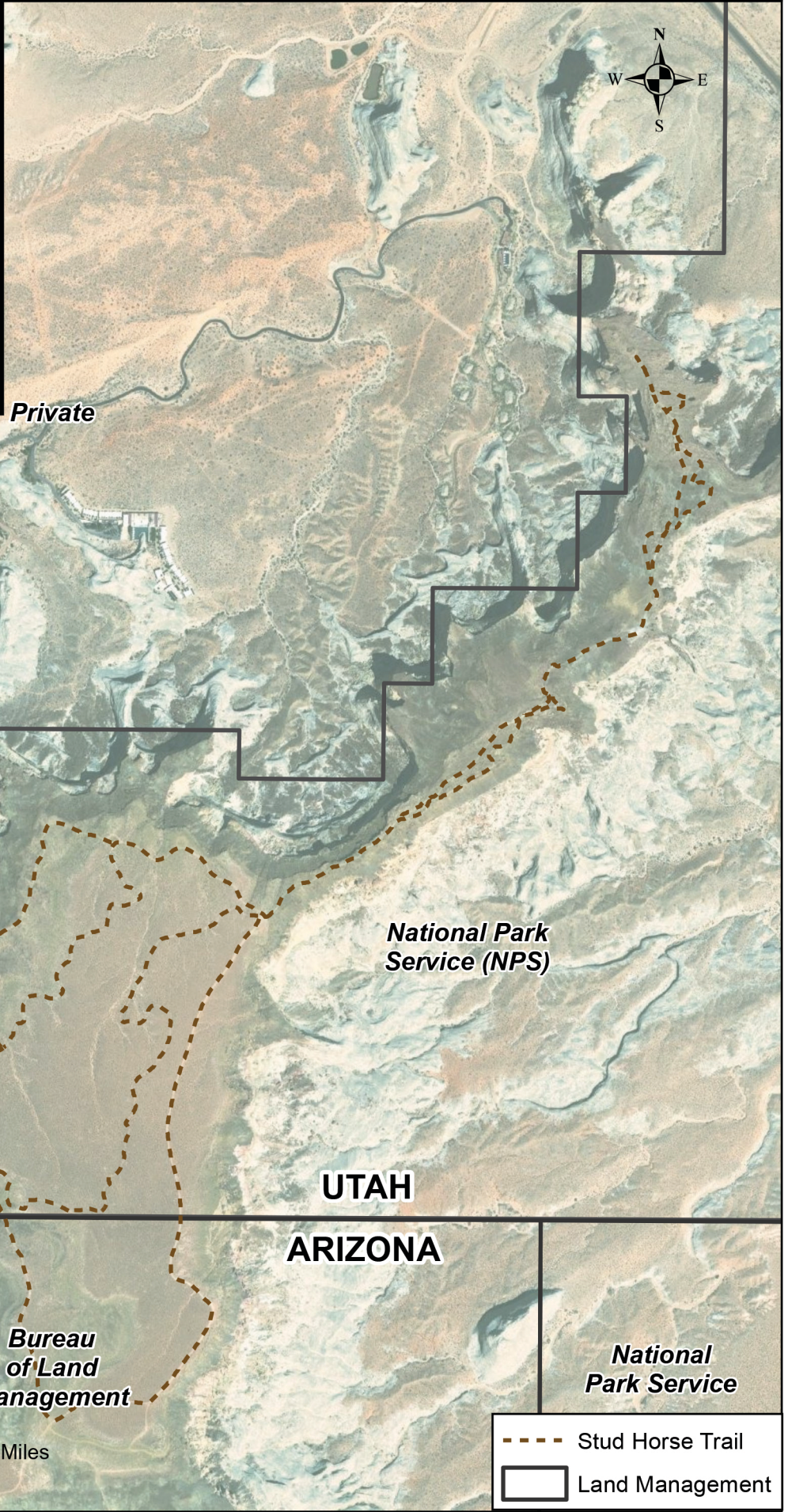
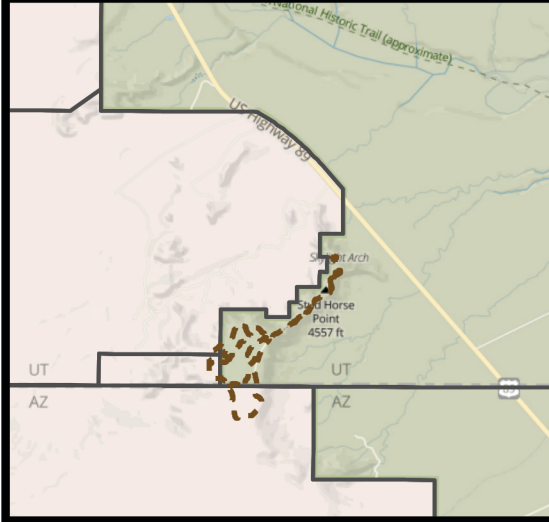
Aerial View of Stud Horse Mesa



Skylight Arch on Stud Horse Mesa

Stud Horse Mesa Area

Glen Canyon NRA and Rainbow Bridge NM
National Park Service
U.S. Department of the Interior



0 0.125 0.25 0.5 Miles

- Stud Horse Trail
- Land Management