

Frontcountry Key Locations

Great Sand Dunes National Park and Preserve

March 2024



BACKGROUND

INCREASE IN VISITATION DUE TO:

- » Park designation in 2004
- » The National Parks Centennial Celebration
- » Pandemic in 2020

Increased visitation has impacted natural and cultural resources, visitor experience and mobility, safety, and park facilities and operations.

The peak visitation season (May through August) sees approximately 70% of all Park visitation annually with current trends showing steady visitation increases during shoulder season weekends through October.



Snowy Star Dune and Crestone Peaks
(NPS/Patrick Myers)

TRANSPORTATION AND TRANSIT PLAN

PURPOSE: To provide a series of concepts to address the challenges presented by increased use and changing visitor use patterns. These concepts explore frontcountry motorized and non-motorized solutions.

NEXT STEPS

Pre-NEPA and NEPA Process Steps for the Transportation and Transit Plan

Step 1. Define purpose and develop potential actions

Step 2. Civic Engagement

March 13th @ 6pm
Rio Grande Water Conservation District

March 14th @6pm
Baca National Wildlife Refuge Office

Step 3. Refine concept

Step 4. Identify environmental impacts

Step 5. Public review of plan and environmental document

Step 6. Analysis of public comment

Step 7. Prepare final plan and decision document

Step 8. Release final plan and decision document

HOW TO COMMENT

The comment period is from
February 28th – March 28th

ONLINE

<https://parkplanning.nps.gov/projectHome.cfm?projectId=99139>

IN-PERSON

Make sure to sign in, grab a comment sheet, and visit the 5 stations

Station 1: Overview Map and Project Overview

Station 2: Entrance Sign, Park Entrance Road, and Entrance Station

Station 3: Dunes Parking Lot and Medano Creek Road

Station 4: Horse Trailer Parking Lot and Amphitheater

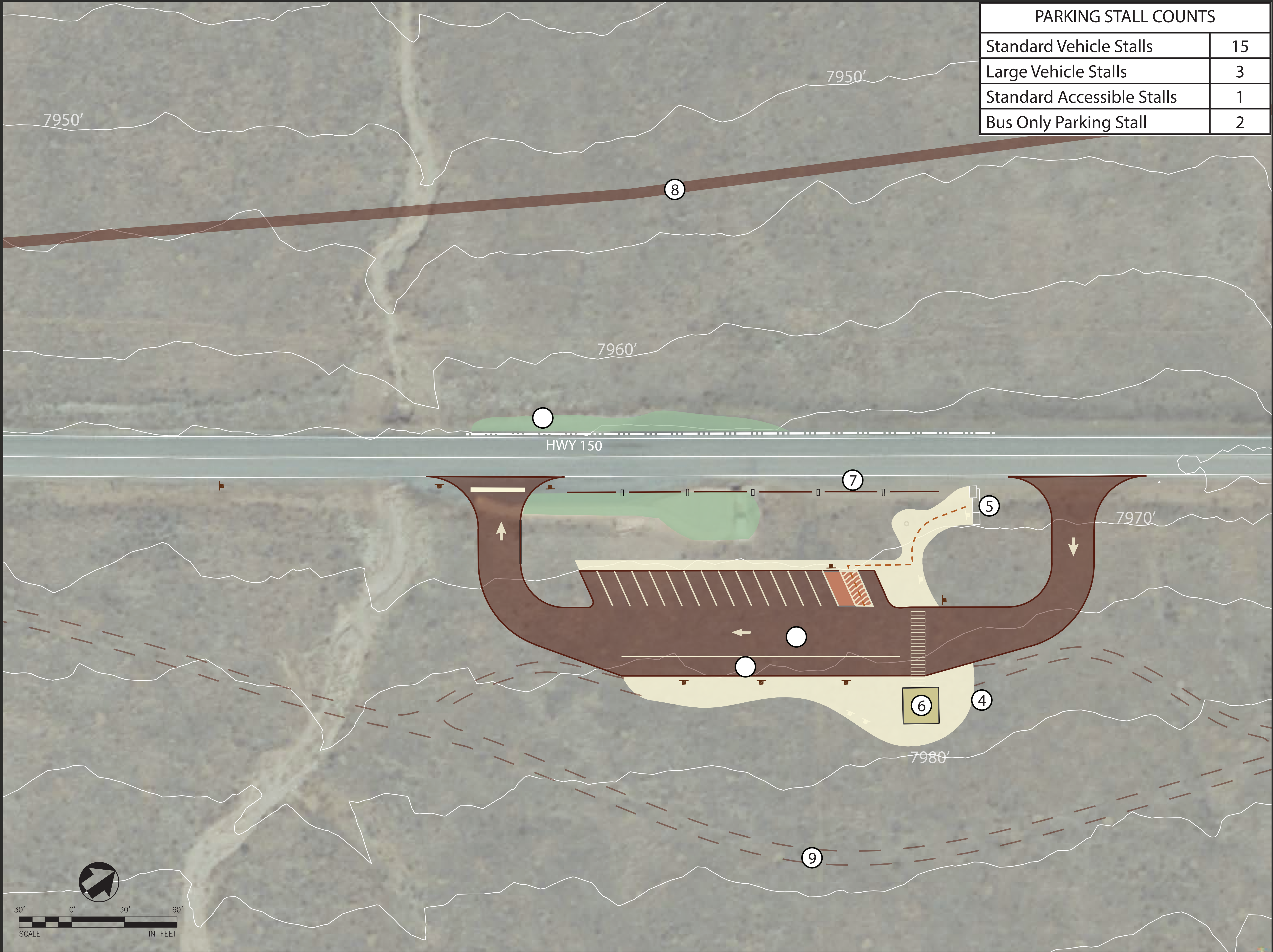
Station 5: Multi-Modal Trail

Project Overview

Great Sand Dunes National Park and Preserve

March 2024

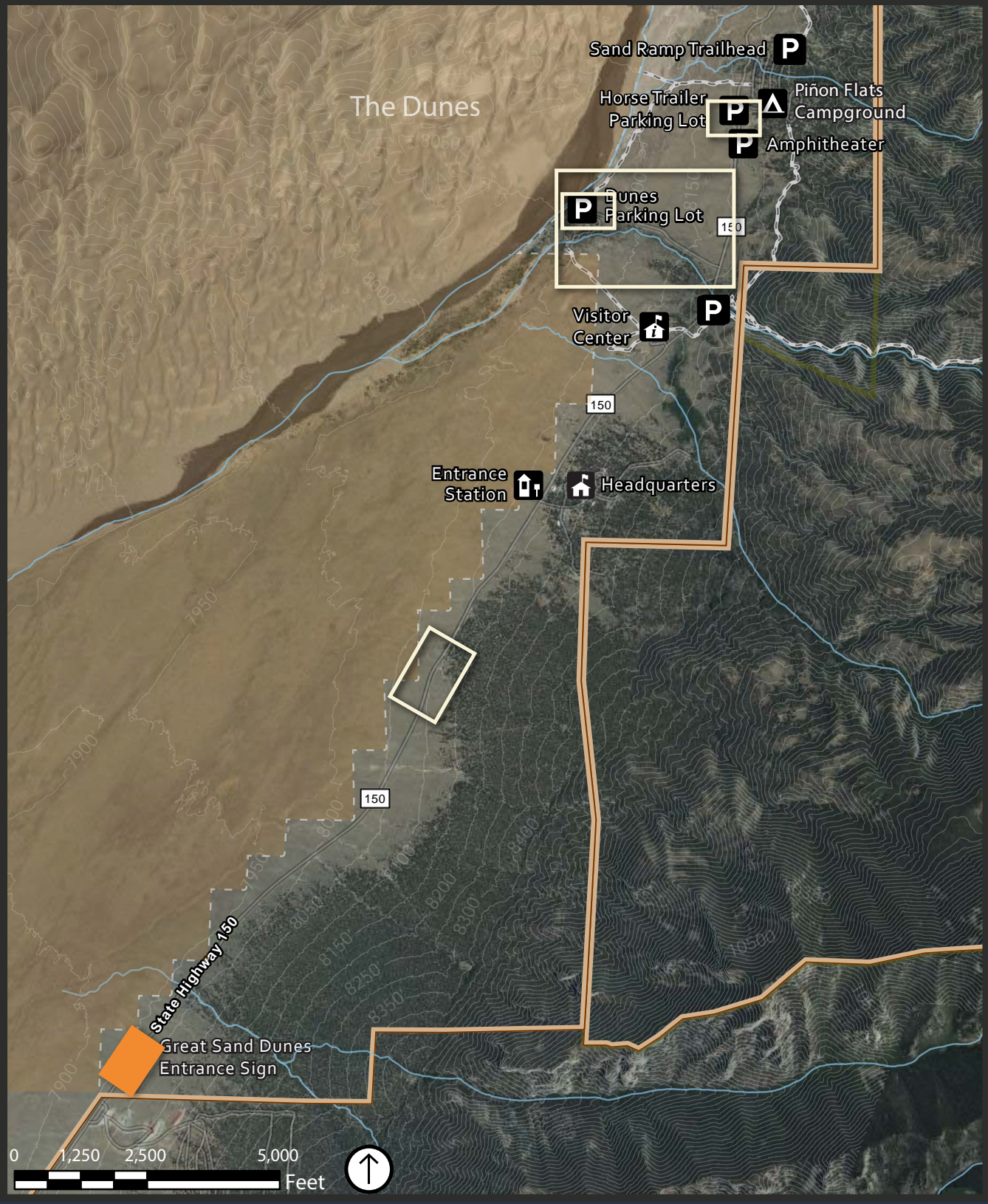


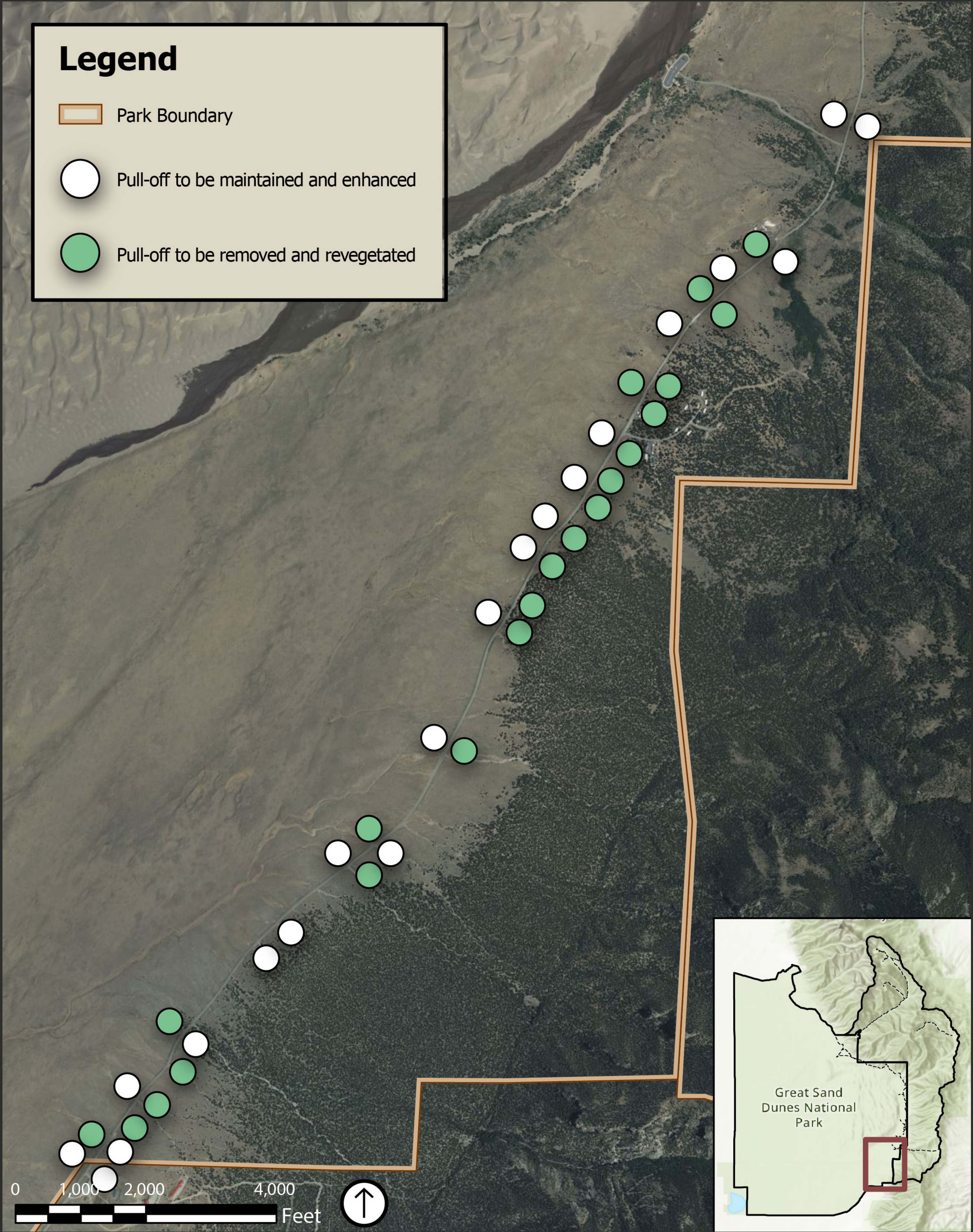


| PARKING STALL COUNTS | |
|----------------------------|----|
| Standard Vehicle Stalls | 15 |
| Large Vehicle Stalls | 3 |
| Standard Accessible Stalls | 1 |
| Bus Only Parking Stall | 2 |

LEGEND

- Visitor Informational Signage
 - Vehicular Wayfinding Signage
 - Accessible Route
 - Existing Conditions + 5' Contours
 - New Roadway Barrier
 - New Striping
 - Temporary Roadway Barrier
 - New Asphalt
 - New Concrete
 - New Pedestrian Walkway
 - New Structure
 - Restoration Plantings
- Restoration of an informal pull-off with native plantings and temporary roadway barrier.
 - Large vehicle/ bus parking.
 - New one-way parking lot for visitors.
 - Informational signage with interpretive kiosk.
 - Existing park entrance sign to be reconstructed.
 - New vault toilet restrooms.
 - Split rail fence.
 - Formal 10' multi-modal trail connecting the Piñon Flats Campground , Visitor Center, and new entrance station to the park entrance.
 - Alternate multi-modal trail alignment.



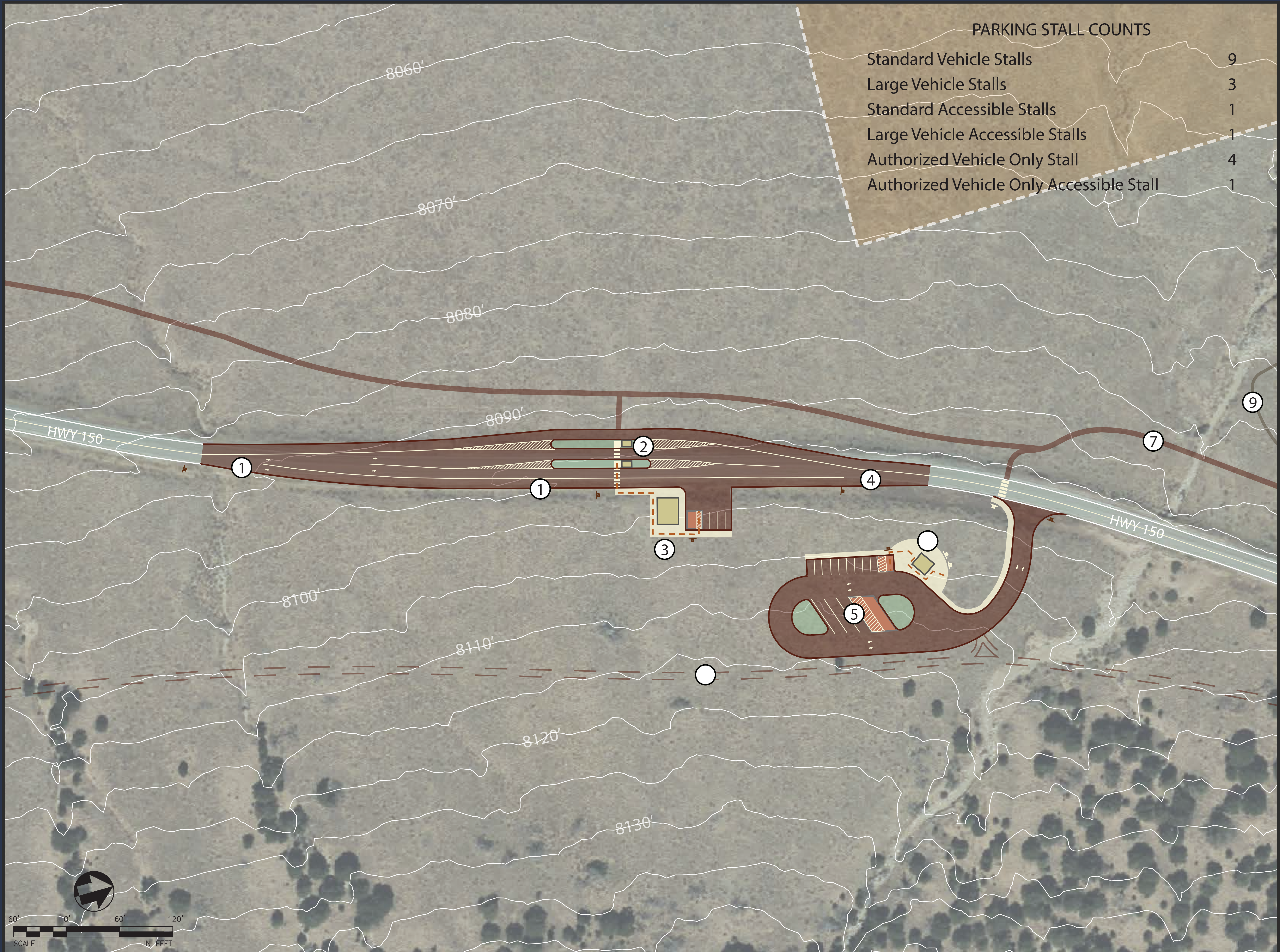


Park Entrance Road

Great Sand Dunes National Park and Preserve

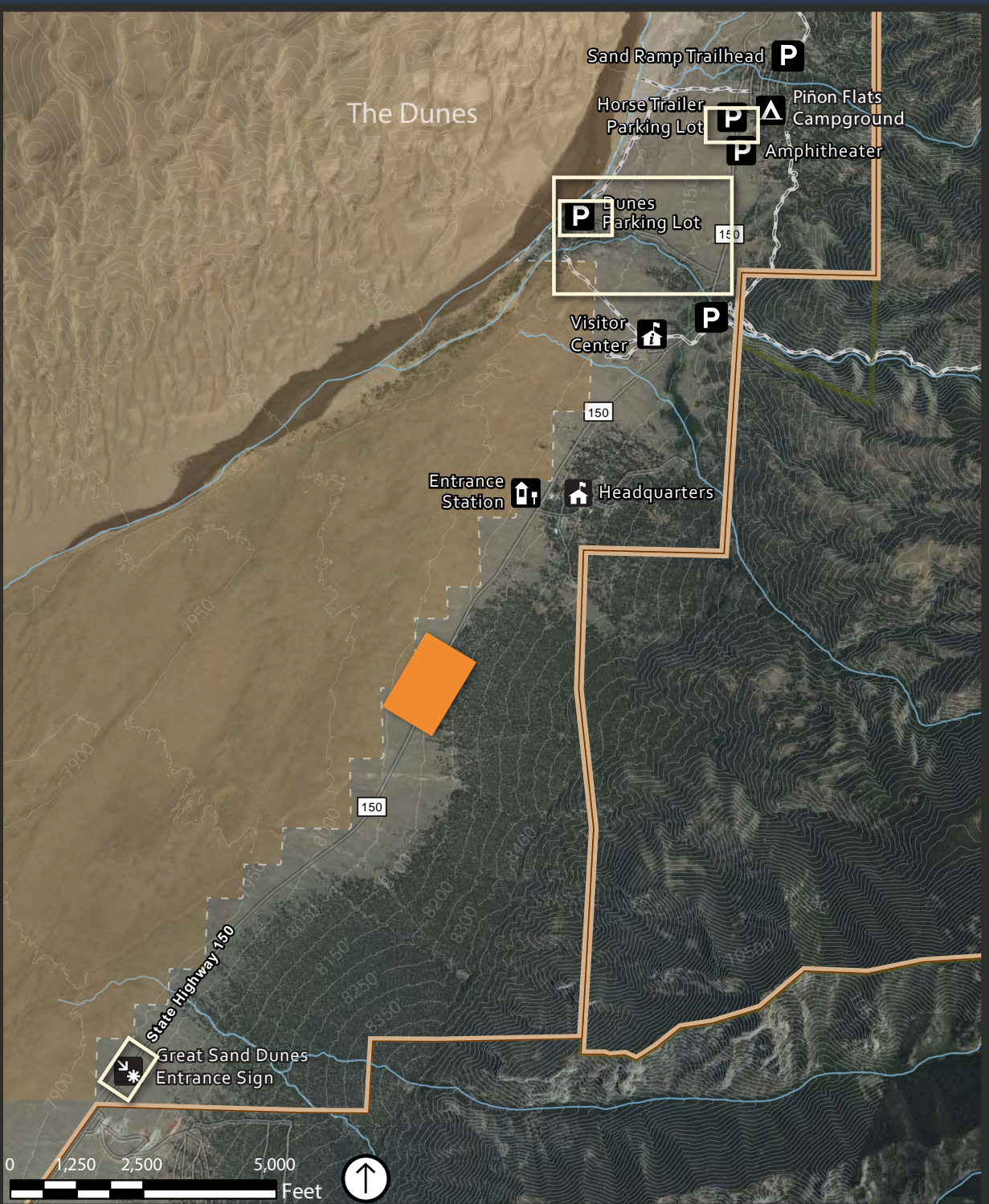
March 2024





LEGEND

- Visitor Informational Signage
 - Vehicular Wayfinding Signage
 - Accessible Route
 - Existing Conditions + 5' Contours
 - New Striping
 - New Asphalt
 - New Concrete
 - New Pedestrian Walkway
 - New Structure
 - Restoration Plantings
 - Wilderness Boundary
- New bypass lane to provide ease of access for authorized vehicles to the new park staff building and into the park.
 - Two new entrance station kiosks, one of which is accessible from new parking lot.
 - New park staff building with restroom, break room, and safe.
 - End of bypass lane.
 - New two-way overlook parking lot.
 - New welcome overlook with wayfinding signage and plumbed restrooms.
 - Formal 10' multi-modal trail connecting the Piñon Flats Campground, Visitor Center, and new Entrance Station to the park entrance.
 - Alternate multi-modal trail alignment.
 - Nature trail.

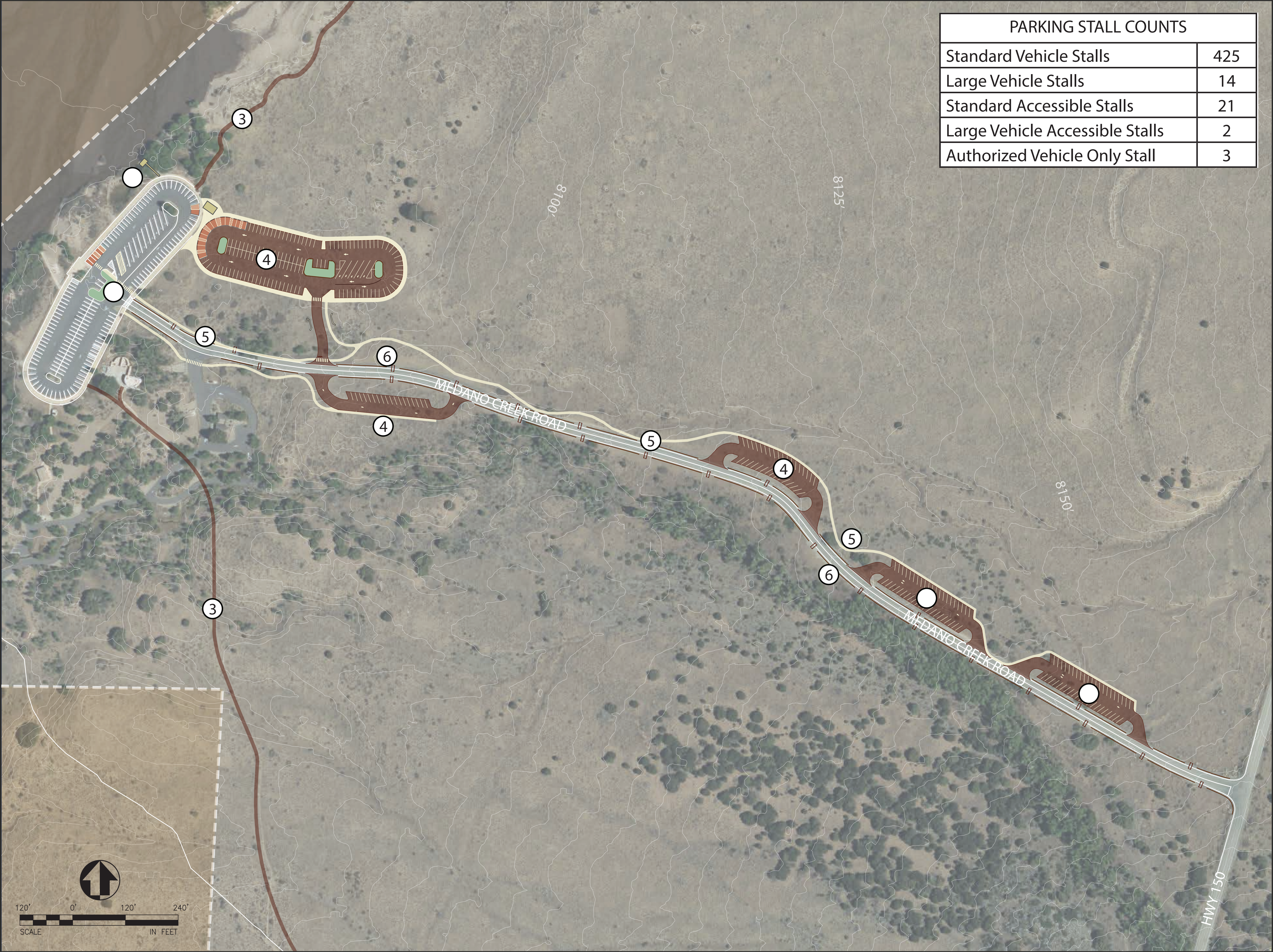


Entrance Station

Great Sand Dunes National Park and Preserve

March 2024

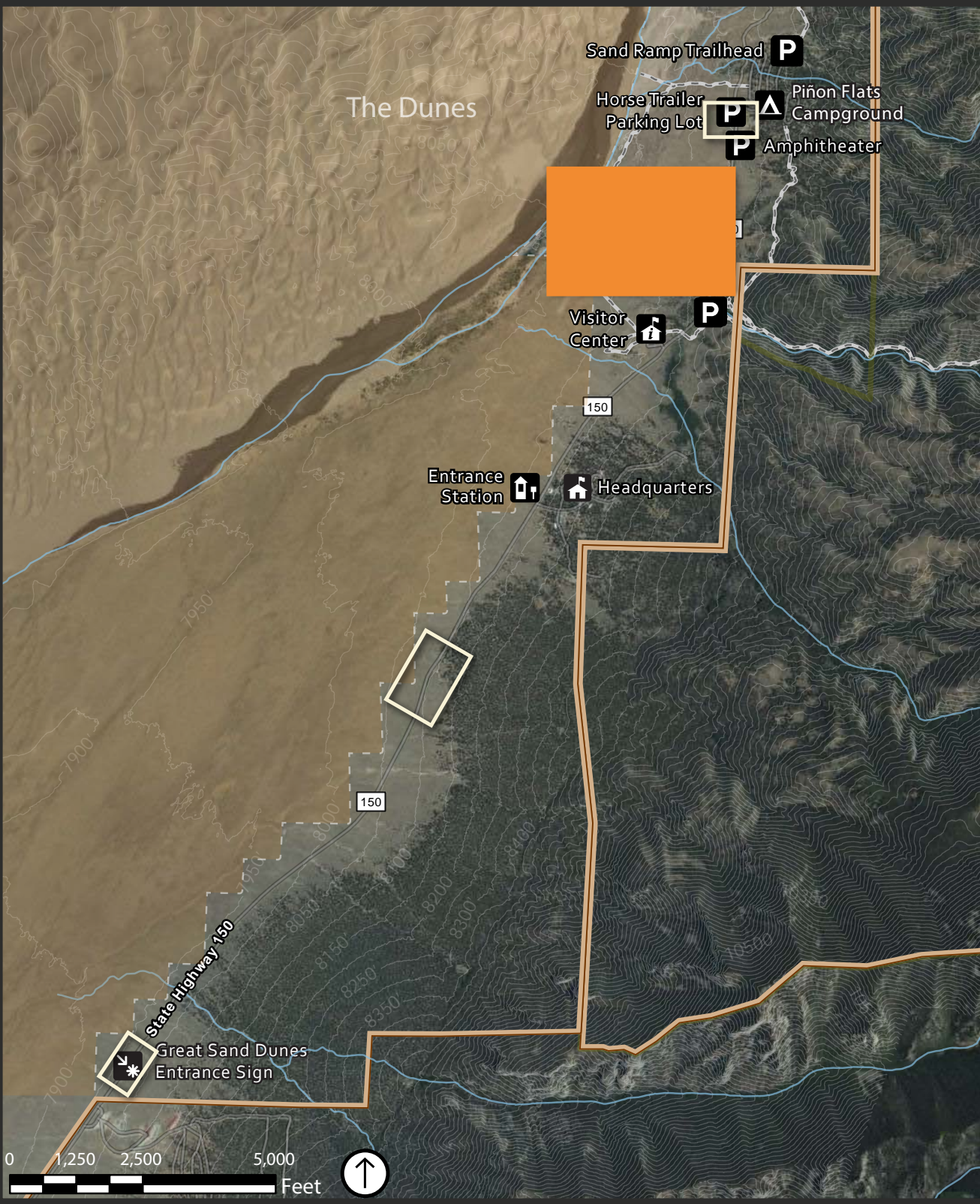




| PARKING STALL COUNTS | |
|---------------------------------|-----|
| Standard Vehicle Stalls | 425 |
| Large Vehicle Stalls | 14 |
| Standard Accessible Stalls | 21 |
| Large Vehicle Accessible Stalls | 2 |
| Authorized Vehicle Only Stall | 3 |

LEGEND

- Visitor Informational Signage
 - Vehicular Wayfinding Signage
 - Accessible Route
 - Existing Conditions + 5' Contours
 - New Split Rail Fence
 - New Striping
 - New Asphalt
 - New Concrete
 - New Pedestrian Walkway
 - New Structure
 - Restoration Plantings
 - Wilderness Boundary
- New marked crosswalk through existing Dunes Parking Lot.
 - New accessible boardwalk overlook.
 - Formal 10' multi-modal trail connecting the Piñon Flats Campground to the Visitor Center.
 - New visitor parking lots along Medano Creek Road with standard stalls, large vehicle stalls, and accessible stalls.
 - New trail off of roadway connecting visitors safely to the dunes.
 - New split rail fence ties into existing fencing to prevent roadside parking.

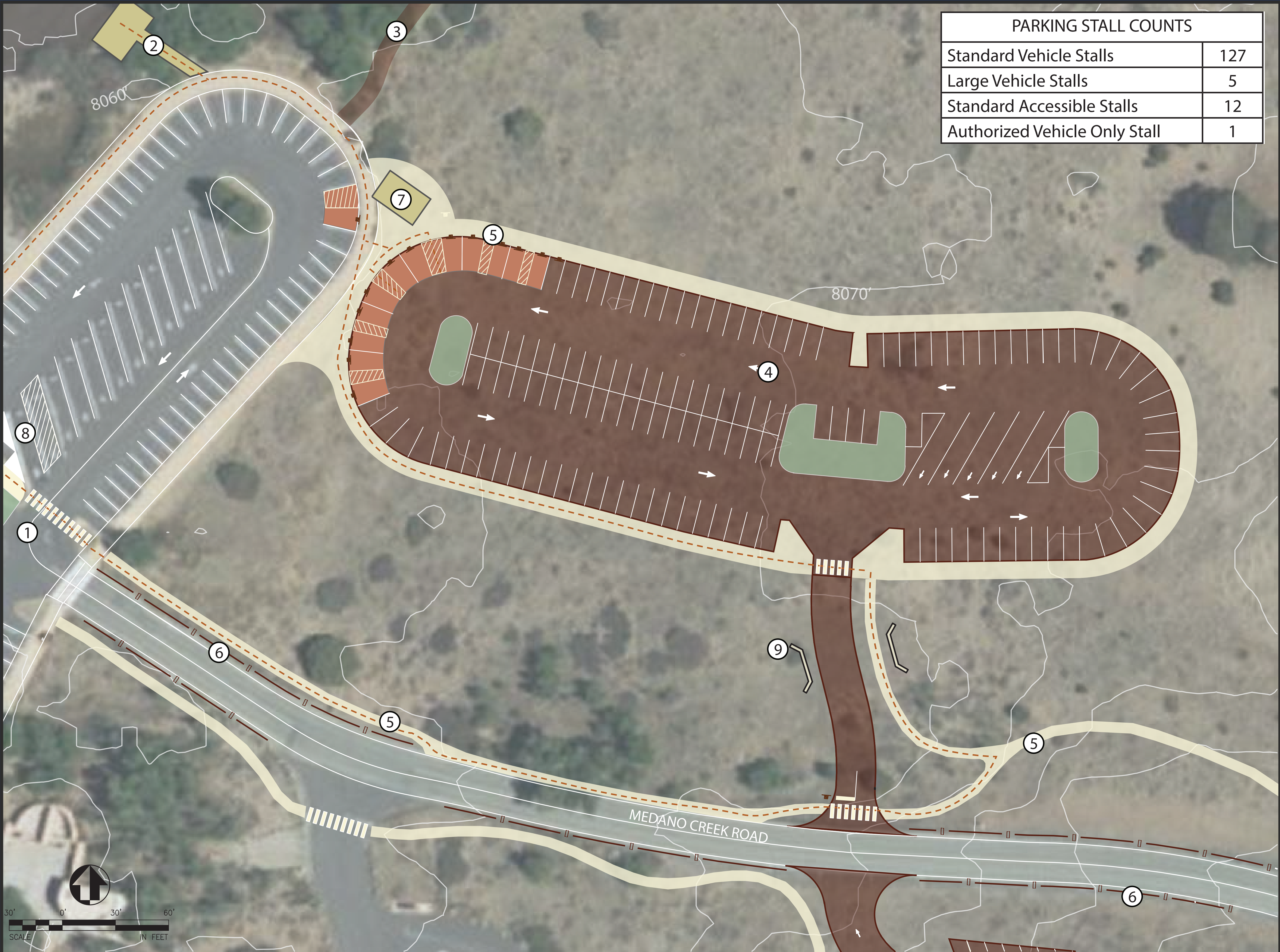


Dunes Parking Lot and Medano Creek Road

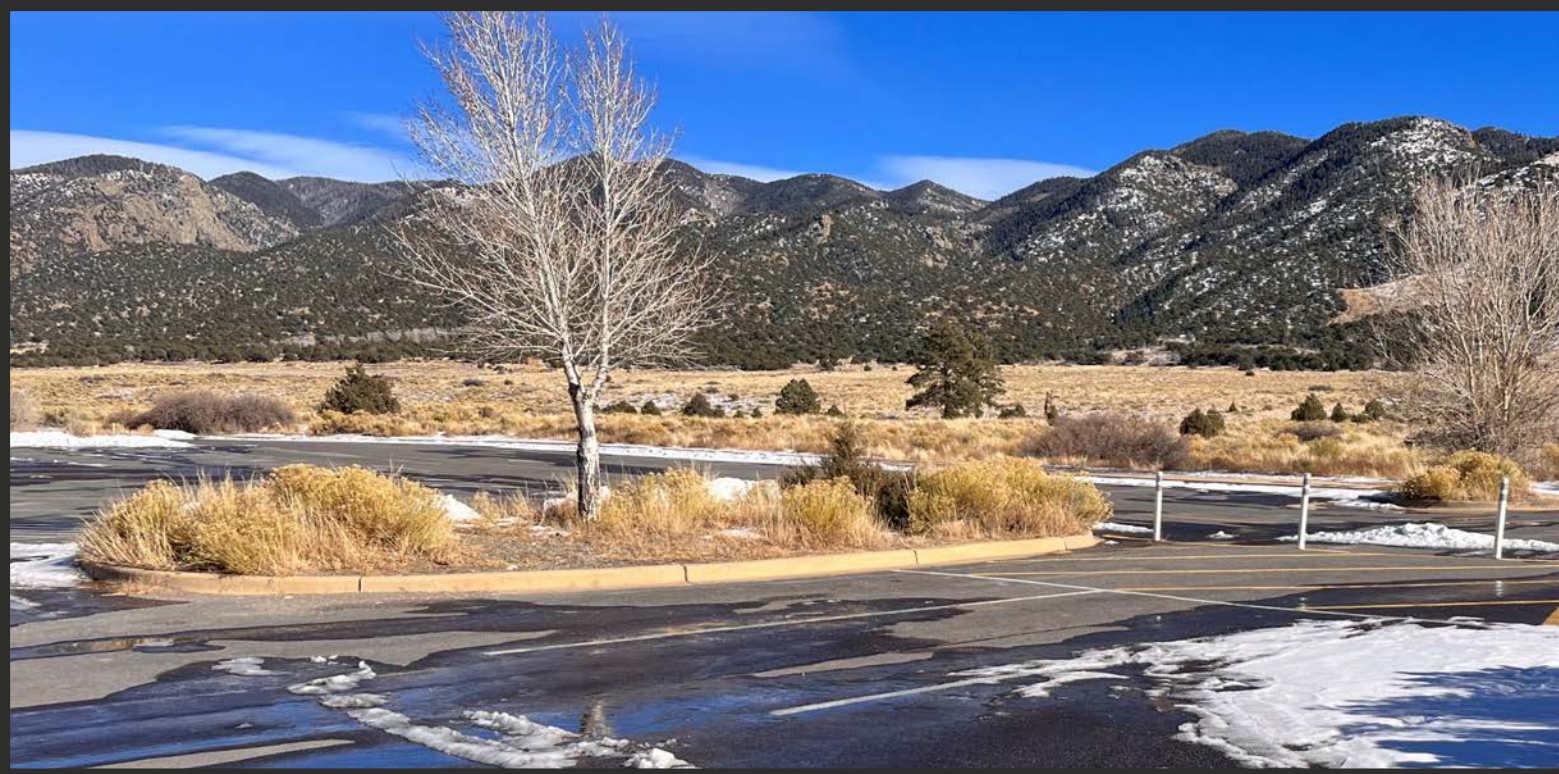
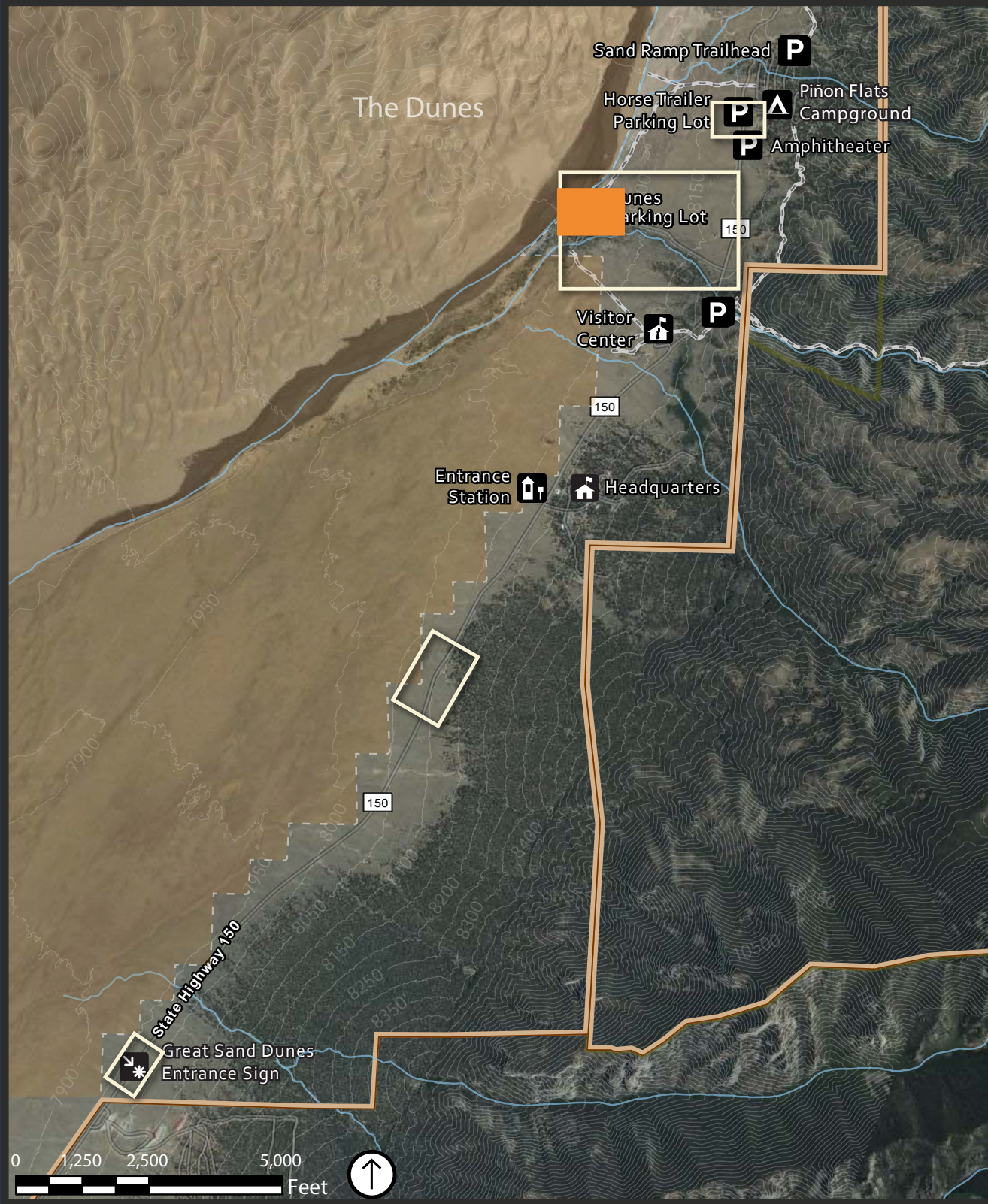
Great Sand Dunes National Park and Preserve

March 2024





- ### LEGEND
- Visitor Informational Signage
 - Vehicular Wayfinding Signage
 - Accessible Route
 - Existing Conditions + 5' Contours
 - New Split Rail Fence
 - New Striping
 - New Asphalt
 - New Concrete
 - New Pedestrian Walkway
 - New Structure
 - Restoration Plantings
- New marked crosswalk through existing Dunes Parking Lot with re-vegetated island.
 - New accessible boardwalk overlook.
 - Formal 10' multi-modal trail connecting the Piñon Flats Campground to the Visitor Center.
 - New visitor parking lot.
 - New sidewalk off of roadway connecting visitors safely to the dunes.
 - New split rail fence ties into existing fencing to prevent roadside parking.
 - New plaza with storage shed for accessible sand wheelchairs and plumbed comfort station.
 - Two large vehicle accessible stalls.
 - Proposed drainage culvert under roadway.

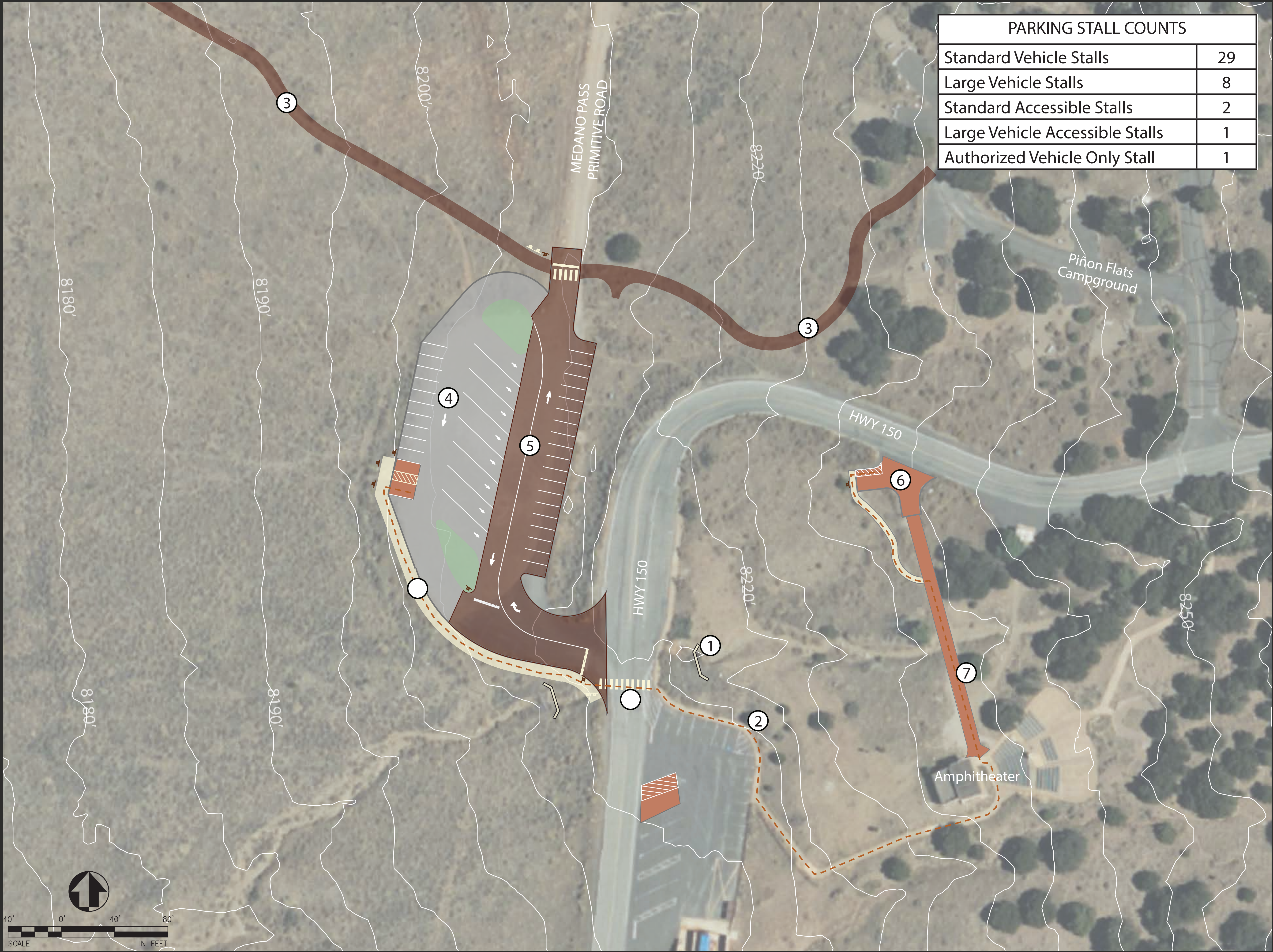


Dunes Parking Lot

Great Sand Dunes National Park and Preserve

March 2024





LEGEND

- Visitor Informational Signage
- Vehicular Wayfinding Signage
- Accessible Route
- Existing Conditions + 5' Contours
- New Roadway Barrier
- New Striping
- New Asphalt
- New Concrete
- New Pedestrian Walkway
- New Gravel
- New Structure
- Restoration Plantings

- ① Culvert extension due to access drive.
- ② New curb ramp to improve accessibility
- ③ Formal 10' multi-modal trail connecting the Piñon Flats Campground, Visitor Center, and new Entrance Station.
- ④ Gravel parking area with stalls delineated with recycled fire hose.
- ⑤ Expanded Horse Trailer Parking area with asphalt surface.
- ⑥ Amphitheater accessible parking stall to be expanded with an accessible pathway.
- ⑦ New maintenance vehicle access road and accessible route.
- ⑧ New marked crosswalk across highway.
- ⑨ New accessible parking with access to amphitheater.



Horse Trailer Parking Lot and Amphitheater

Great Sand Dunes National Park and Preserve

March 2024



