

National Park Service
U.S. Department of the Interior
Cape Hatteras National Seashore



Transportation Study for Bodie Island

EXPERIENCE YOUR AMERICA

Agenda

- Introductions
- Study Purpose and Background
- Study Team and Approach
- Discussion
 - Ongoing Transportation and other Major Initiatives
 - Partnership Opportunities
 - Transportation Issues and Concerns
 - Transportation Ideas and Solutions

Introductions

- Cape Hatteras National Seashore
- NPS Southeast Region
- U.S. DOT Volpe Center
- Stakeholders

EXPERIENCE YOUR AMERICA

Study Background

- How project came about/why it was initiated
- Park service project
- Goals/objectives and needs

Study Background: What is an Alternative Transportation Study?

■ Alternative Transportation Systems

- Bus, Trolley, Boat, Ferry, Multi-modal trails (bicycle/pedestrian), Train, Tram, Carriage, etc.

■ Process

- Data collection and assessment of existing conditions
- Transportation-specific analyses and research
- Development and assessment of strategies/alternatives

■ Results

- Support management decisions (e.g., technology selection)
- Assess financial feasibility
- Develop or improve partnerships
- Purchase, lease, construct, or contract new or enhanced services and/or facilities

Study Background: Funding

- FTA Paul S. Sarbanes Transit in the Parks Program
 - FHWA/FTA Federal Lands Alternative Transportation Study (2001)
 - Program included in SAFETEA-LU (2005)
 - Annual funding level of ~ \$20-25 million
 - 40-50 projects funded each year
 - Program Goals
 - Conserve natural, historical, and cultural resources;
 - Reduce congestion and pollution;
 - Improve visitor mobility and accessibility;
 - Enhance visitor experience; and
 - Ensure access to all, including persons with disabilities.

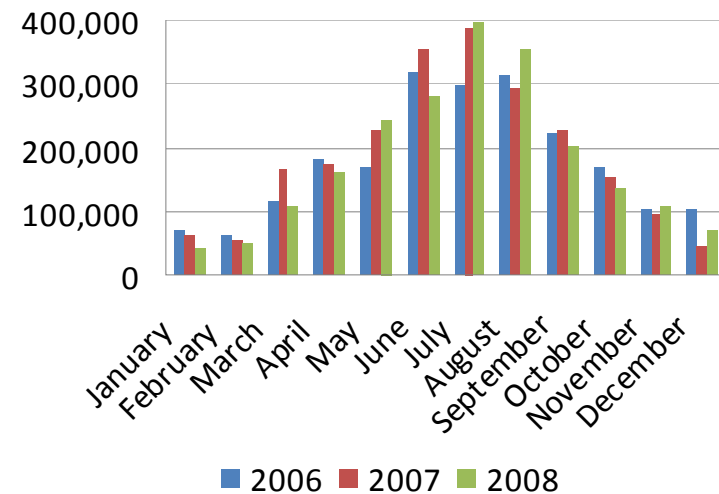
Study Purpose

- Identify optimal transportation strategies for serving visitors originating from the villages along Cape Hatteras destined for sites within the Bodie Island District of the Cape Hatteras National Seashore (e.g. Nags Head, Rodanthe and the other villages to the north and south).

Visitation

- Steady annual visitation of ~2.25 million visits to Cape Hatteras National Seashore 2004-2008
 - Peak visitation in June, July, and August (40-50% of total visits) but significant visitation in spring and fall as well
- Dare County peak seasonal population is 200,000 (Memorial Day to Labor Day) compared to year-round population of ~30,000 (Dare County Land Use Plan 2002)

**CAHA Monthly Recreational
Visitation
2006-2008**



Transportation Issues and Opportunities (Preliminary)

- Congestion due to significant seasonal visitation
- Parking shortages due to high demand and limited supply
- Safety concerns due to road width (Access Road), travel speeds and shoulders for bicycling (NC12)
- Limited access to beach and to west and south Bodie Island
- Vulnerability of infrastructure to storm damage, barrier island dynamics, and climate change
- Future increases in visitation due to:
 - Restoration of Bodie Island Lighthouse
 - New Visitor Center for Bodie Island District
 - Bonner Bridge replacement

Study Area



Bodie Island District of Cape Hatteras National Seashore

EXPERIENCE YOUR AMERICA

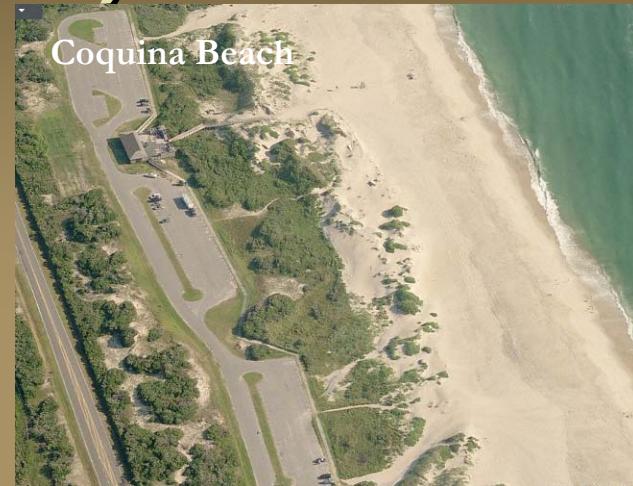
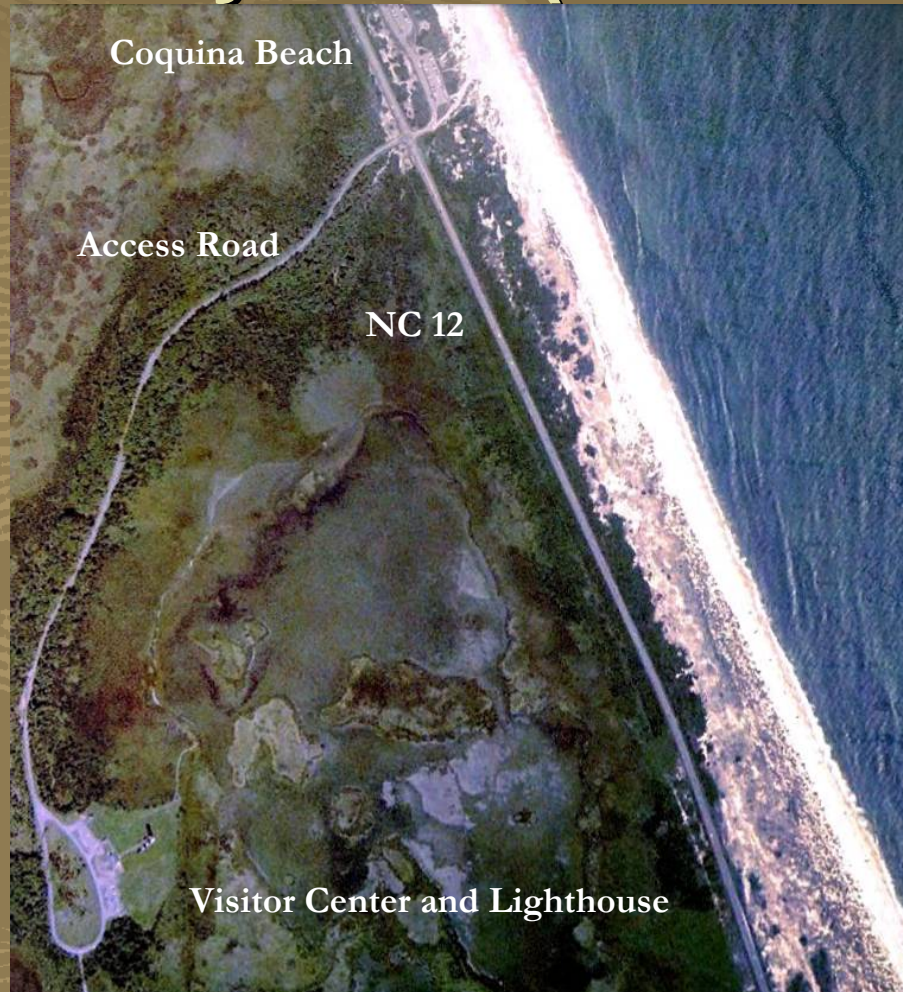
Study Area (continued)



Whalebone Junction Information Station, Cape Hatteras National Seashore

EXPERIENCE YOUR AMERICA

Study Area (continued)



Bodie Island District, Cape Hatteras National Seashore

EXPERIENCE YOUR AMERICA

Study Area (continued)



Marina and Oregon Inlet Campground, Cape Hatteras National Seashore

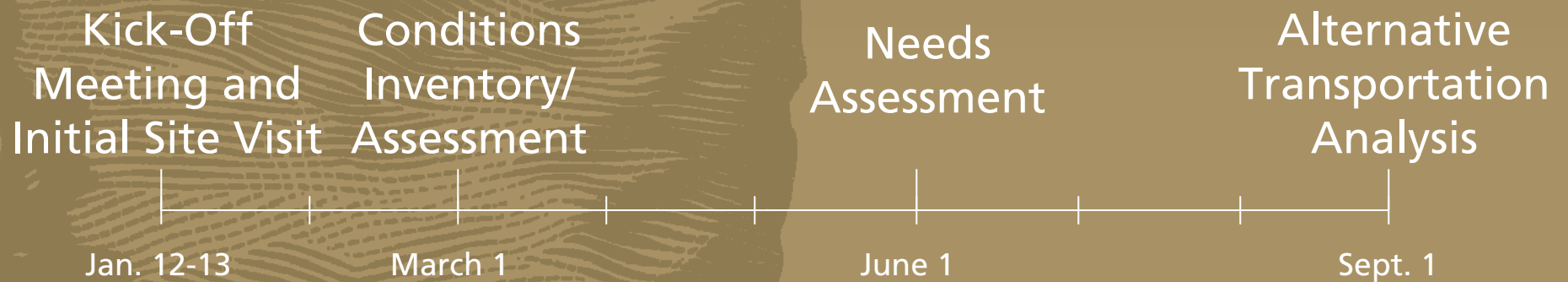
Study Team

- National Park Service, Cape Hatteras National Seashore
 - Darrell Echols, Deputy Superintendant
 - Greg Robinson, Public Health Specialist/Civil Engineer
- National Park Service Southeast Region Office
 - Elisabeth Hahn, Transportation Planner/NPS Project Manager
 - Lee Edwards, FLHP Program Liaison/Project Oversight
- U.S. DOT Volpe National Transportation Systems Center
 - Lindsey Morse, Community Planner/Consultant Project Manager
 - Charlotte Burger, Community Planner/Consultant Research and Analysis Support
 - Kirsten Holder, Analyst/Consultant Research and Analysis Support

Study Approach: Tasks

- Evaluation of the existing transportation network and existing and future project forecasted travel conditions;
- Assessment of unmet transportation needs (existing and projected); and
- Identification of alternative sustainable integrated transportation strategies to address needs.
 - Consideration of multimodal and intermodal strategies that promote interconnectivity; this may include new systems or expansion or enhancement of existing systems.
- Coordination of efforts with Park's ORV Management Plan and General Management Plan, the Outer Banks Transportation Study, the Outer Banks Scenic Byway Corridor Management Plan and other relevant plans, initiatives, studies, and planning partners.

Study Approach: Timeline



EXPERIENCE YOUR AMERICA

Discussion

- Ongoing transportation and other major initiatives
- Partnership Opportunities
- Transportation issues and concerns for Bodie Island
- Transportation ideas and solutions for Bodie Island

Cape Hatteras National Seashore



National Park Service
U.S. Department of the Interior

EXPERIENCE YOUR AMERICA