



IN REPLY REFER TO:
L7615(YOSE-PM)

United States Department of the Interior

NATIONAL PARK SERVICE

Yosemite National Park
P. O. Box 577
Yosemite, California 95389

Memorandum

To: Chuck Pribyl, Project Manager, Yosemite National Park

From: Acting Superintendent, Yosemite National Park

Subject: NEPA and NHPA Clearance: 2009-086 Tachyon Satellite Installation Phase 3 (27003)

The Management Team has reviewed the proposed project/action and completed its environmental assessment documentation, and we have determined that there:

- Will not be any effect on threatened, endangered, or rare species and/or their critical habitat.
- Will not be any effect on historical, cultural, or archeological resources.
- Will not be serious or long-term undesirable environmental or visual effects.

The subject proposed project, therefore, is now cleared for all NEPA and NHPA compliance requirements as presented above. Project plans and specifications are approved and construction and/or project implementation can commence.

For the proposed project actions to be within compliance requirements during construction and/or project implementation, the following mitigations must be adhered to:

- No mitigations identified.


David V. Uberuaga

for
Enclosure (with attachments)

cc: Statutory Compliance File



National Park Service
U.S. Department of the Interior

Yosemite NP
Date: 08/18/2009

Categorical Exclusion Form

Project: **2009-086 Tachyon Satellite Installation Phase 3**

PEPC ID: **27003**

Project Description:

The Tachyon Satellite Equipment Installation Project is to provide a Local Area Network/Wide Area Network (LAN/WAN) connection to various operational teams in areas where traditional high speed data connectivity does not exist. There are two locations in this third phase.

Each site will require the installation of a free standing pole (5' to 6') to mount a 1.2 meter (approximately 47.24") dish antenna. Antenna placement will be in the least obvious location at each site while still providing adequate communication with the satellite to deliver high speed data connectivity. Placement of the dish must allow visibility to the satellite located 168 degrees magnetic and 42 degrees in elevation. Placement of the dish at each site was made to limit tree trimming or removal as well as minimizing intrusion into the areas around the buildings and landscapes. The attached documents provide a map of each site, a brief description of each installation and photo of the proposed antenna installation. The park Archeologist provided verbal confirmation that the information provided was adequate for their needs. Initial site surveys were done July 22, 2008, with the Tachyon installer who provided locations for the satellite installations. At the request of the park Historical Architect, a revisit of these two sites was accomplished on June 19, 2009, with the Tachyon installer. Tachyon engineers provided input into painting and color selection for best operational results.

Tioga Pass Entrance Station: The satellite dish will be mounted on a 5' pole approximately one foot behind the center of the Entrance Station Office building #3200. This location will provide good visibility to the satellite. The 3" pole will be self supporting in concrete approximately 1' in diameter and 3' below ground. This dish and pole will be painted Wosky brown by the installer. The closeness of the dish to the building will minimize its visibility to the public.

Tuolumne Camp Ground Office: The satellite dish will be mounted on a 5' pole within 5' of the camp ground office. The 3" pole will be self supporting in concrete approximately 1' in diameter and 3' below ground. An 18" deep, 12" wide trench that is approximately 5' long will be required to install conduit containing coaxial cable from dish to the camp ground office building #3005. The Tachyon installer proposed a location which is just inside the south east corner of the building. Installation at the Tuolumne Meadows campground location will require the removal of a small lodgepole pine and the trimming of a few lower branches of a larger lodgepole pine. The park Historic Architect concurs with the Tachyon installer for the preferred location. The dish and pole will be painted Wosky brown at this site.

Project Locations:

Mariposa County, CA

Mitigations:

- **No mitigations identified**

Describe the category used to exclude action from further NEPA analysis and indicate the number of the category (see Section 3-4 of DO-12):

C.13 Issuance of rights-of-way for overhead utility lines to an individual building or well from an existing line where installation will not result in significant visual intrusion and will involve no clearance of vegetation other than for placement of poles.

On the basis of the environmental impact information in the statutory compliance file, with which I am familiar, I am categorically excluding the described project from further NEPA analysis. No exceptional circumstances (e.g. all boxes in the ESF are marked "no") or conditions in Section 3-6 apply, and the action is fully described in Section 3-4 of DO-12.

Acting Superintendent

James F. Hammett

Date

8/26/2009



National Park Service
U.S. Department of the Interior

Yosemite NP
Date: 08/12/2009

ENVIRONMENTAL SCREENING FORM (ESF)
DO-12 APPENDIX 1

Updated May 2007 - per 2004 DM revisions and proposed DO-12 changes

Today's Date: **August 18, 2009**

Date Form Initiated: **08/18/2009**

A. PROJECT INFORMATION

Park Name: **Yosemite NP**

Project Title: **Tachyon Satellite Installation Phase 3**

PEPC Project Number: **27003**

Project Type: **Information Technology Infrastructure (OTHER)**

Project Location: County, State: **Tuolumne, California** District: **Tuolumne**

Project Leader: **Chuck Pribyl**

Preliminary drawings attached? **Yes**

Is project a hot topic (controversial or sensitive issues that should be brought to attention of Regional Director)? **No**

B. RESOURCE EFFECTS TO CONSIDER:

Identify potential effects to the following physical, natural, or cultural resources	No Effect	Negligible Effects	Minor Effects	Exceeds Minor Effects	Data Needed to Determine/Notes
1. Geologic resources – soils, bedrock, streambeds, etc.		X			Each hole will be 12" in diameter x 36" deep. The Tuolumne Campground office location will require a trench 5' long x 12" wide x 18" deep.
2. From geohazards	X				
3. Air quality	X				
4. Soundscapes		X			Holes will be dug with power equipment; not to exceed three hours.
5. Water quality or quantity	X				

6. Streamflow characteristics	X				
7. Marine or estuarine resources	X				
8. Floodplains or wetlands	X				
9. Land use, including occupancy, income, values, ownership, type of use	X				
10. Rare or unusual vegetation – old growth timber, riparian, alpine	X				
11. Species of special concern (plant or animal; state or federal listed or proposed for listing) or their habitat	X				
12. Unique ecosystems, biosphere reserves, World Heritage Sites	X				Yosemite National Park is a World Heritage site; no historic properties would be adversely affected by implementing this project.
13. Unique or important wildlife or wildlife habitat	X				
14. Unique or important fish or fish habitat	X				
15. Introduce or promote non-native species (plant or animal)	X				
16. Recreation resources, including supply, demand, visitation, activities, etc.	X				
17. Visitor experience, aesthetic resources	X				
18. Archeological resources		X			Tuolumne Meadows Archeological District.
19. Prehistoric/historic structure		X			Tioga Pass Ranger Station; Tuolumne Meadows Ranger Station.
20. Cultural landscapes		X			Tioga Road Entrance Historic District; Tuolumne Meadows Historic District.
21. Ethnographic resources	X				
22. Museum collections (objects, specimens, and archival and manuscript	X				

collections)					
23. Socioeconomics, including employment, occupation, income changes, tax base, infrastructure	X				
24. Minority and low income populations, ethnography, size, migration patterns, etc.	X				
25. Energy resources	X				
26. Other agency or tribal land use plans or policies	X				
27. Resource, including energy, conservation potential, sustainability	X				
28. Urban quality, gateway communities, etc.	X				
29. Long-term management of resources or land/resource productivity	X				
30. Other important environment resources (e.g. geothermal, paleontological resources)?	X				

C. MANDATORY CRITERIA

Mandatory Criteria: If implemented, would the proposal:	Yes	No	N/A	Comment or Data Needed to Determine
A. Have significant impacts on public health or safety?		X		
B. Have significant impacts on such natural resources and unique geographic characteristics as historic or cultural resources; park, recreation, or refuge lands; wilderness areas; wild or scenic rivers; national natural landmarks; sole or principal drinking water aquifers; prime farmlands; wetlands (Executive Order 11990); floodplains (Executive Order 11988); national monuments; migratory birds; and other ecologically significant or critical areas?		X		Mitigated; the assessment of effect is "No Adverse Effect."
C. Have highly controversial environmental effects or involve		X		

unresolved conflicts concerning alternative uses of available resources (NEPA section 102(2)(E))?				
D. Have highly uncertain and potentially significant environmental effects or involve unique or unknown environmental risks?		X		
E. Establish a precedent for future action or represent a decision in principle about future actions with potentially significant environmental effects?		X		
F. Have a direct relationship to other actions with individually insignificant, but cumulatively significant, environmental effects?		X		
G. Have significant impacts on properties listed or eligible for listing on the National Register of Historic Places, as determined by either the bureau or office?		X		
H. Have significant impacts on species listed or proposed to be listed on the List of Endangered or Threatened Species, or have significant impacts on designated Critical Habitat for these species?		X		
I. Violate a federal law, or a state, local, or tribal law or requirement imposed for the protection of the environment?		X		
J. Have a disproportionately high and adverse effect on low income or minority populations (Executive Order 12898)?		X		
K. Limit access to and ceremonial use of Indian sacred sites on federal lands by Indian religious practitioners or significantly adversely affect the physical integrity of such sacred sites (Executive Order 13007)?		X		
L. Contribute to the introduction, continued existence, or spread of noxious weeds or non-native invasive species known to occur in the area or actions that may promote the introduction, growth, or expansion of the range of such species (Federal Noxious Weed Control Act and Executive Order 13112)?		X		

For the purpose of interpreting these procedures within the NPS, any action that has the potential to violate the NPS Organic Act by impairing park resources or values would constitute an action that triggers the DOI exception for actions that threaten to violate a federal law for protection of the environment.

D. OTHER INFORMATION

Are personnel preparing this form familiar with the site? **Yes**

Did personnel conduct a site visit? **Yes, Resources Management and Science, Business Revenue and Management, and Administration staff.**

Is the project in an approved plan such as a General Management Plan or an Implementation Plan with an accompanying NEPA document? **No**

Are there any interested or affected agencies or parties? **No**

Has consultation with all affected agencies or tribes been completed? **No**

Are there any connected, cumulative, or similar actions as part of the proposed action? (e.g., other development projects in area or identified in GMP, adequate/available utilities to accomplish project)? **No**

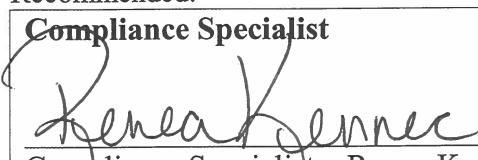
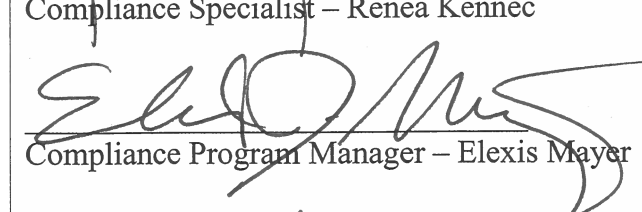

E. INTERDISCIPLINARY TEAM SIGNATORIES

<u>Interdisciplinary Team</u>	<u>Field of Expertise</u>
David V. Uberuaga	Acting Superintendent
Jim Hammett	Acting Deputy Superintendent
Kristina Rylands	Acting Chief of Planning
Mark Butler	Chief of Project Management
Katariina Tuovinen	Chief of Administration Management
Dennis Mattiuzzi	Chief of Facilities Management
Niki Nicholas	Chief of Resources Management & Science
Marty Nielson	Chief of Business and Revenue Management
Tom Medema	Acting Chief of Interpretation and Education
Steve Shackelton	Chief Ranger
Chuck Pribyl	Project Leader
Elexis Mayer	Environmental Planning and Compliance
	Program Manager
Jeannette Simons	NHPA Specialist
Renea Kennec	NEPA Specialist

F. SUPERVISORY SIGNATORY

Based on the environmental impact information contained in the statutory compliance file and in this environmental screening form, environmental documentation for this stage of the subject project is complete.

Recommended:

<u>Compliance Specialist</u>	<u>Date</u>
 Compliance Specialist – Renea Kennec	<u>8/18/09</u>
 Compliance Program Manager – Elexis Mayer	<u>8/25/09</u>
 Chief, Project Management – Mark Butler	<u>8/25/09</u>

Approved:

Acting Superintendent

Date

James F. Hammett

8/26/2009

for David V. Uberuaga

PARK ESF ADDENDUM

Today's Date: **August 18, 2009**

PROJECT INFORMATION

Park Name: Yosemite NP

Project Number: 27003

Project Type: Information Technology Infrastructure (OTHER)

Project Location: County, State: Tuolumne , California District, Section: Tuolumne,

Project Manager: Chuck Pribyl

Project Title: 2009-086 Tachyon Satellite Installation Phase 3

PARK ESF ADDENDUM QUESTIONS & ANSWERS

ESF Addendum Questions	Yes	No	N/A	Data Needed to Determine/Notes
1.SPECIAL STATUS SPECIES CHECKLIST				
2. Listed or proposed threatened or endangered species (Federal or State)?		X		
3. Species of special concern (Federal or State)?		X		
4. Park rare plants or vegetation?		X		
5. Potential habitat for any special-status species listed above?		X		
6.NATIONAL HISTORIC PRESERVATION ACT CHECKLIST				
7. Entail ground disturbance?	X			Each hole will be 12" in diameter x 36" deep. The Tuolumne Campground office location will require a trench 5' long x 12" wide x 18" deep.
8. Are any archeological or ethnographic sites located within the area of potential effect?	X			Tuolumne Meadows Archeological District; the assessment of effect is "No Historic Properties Affected."
9. Entail alteration of a historic structure or cultural landscape?	X			The satellite dishes will be placed in locations where they are the least obtrusive in the visual landscape.
10. Has a National Register form been completed?	X			Tuolumne Meadows Ranger Station; Tioga Pass Ranger Station; Tioga Road Entrance Historic District; all listed in register and documented.
11. Are there any structures on the park's List of Classified Structures in the area of potential effect?	X			Tuolumne Meadows Ranger Station, 5788; Tioga Pass Ranger Station, 5794.
12.WILD AND SCENIC RIVERS ACT CHECKLIST				
13. Fall within a wild and scenic river corridor?	X			Tuolumne River.
14. Fall within the bed and banks AND will affect the free-flow of the river?		X		

15. Have the possibility of affecting water quality of the area?		X		
16. Remain consistent with its river segment classification?			X	
17. Protect and enhance river ORVs?			X	
18. Fall within the River Protection Overlay?		X		
19. If Yes, remain consistent with conditions of the River Protection Overlay?			X	
20. Remain consistent with the areas Management Zoning?			X	
21. Fall on a tributary of a Wild and Scenic River?		X		
22. Will the project encroach or intrude upon the Wild and Scenic River corridor?		X		
23. Will the project unreasonably diminish scenic, recreational, or fish and wildlife values?		X		
100. WILDERNESS ACT CHECKLIST				
101. Within designated Wilderness?		X		
102. Within a Potential Wilderness Addition?		X		



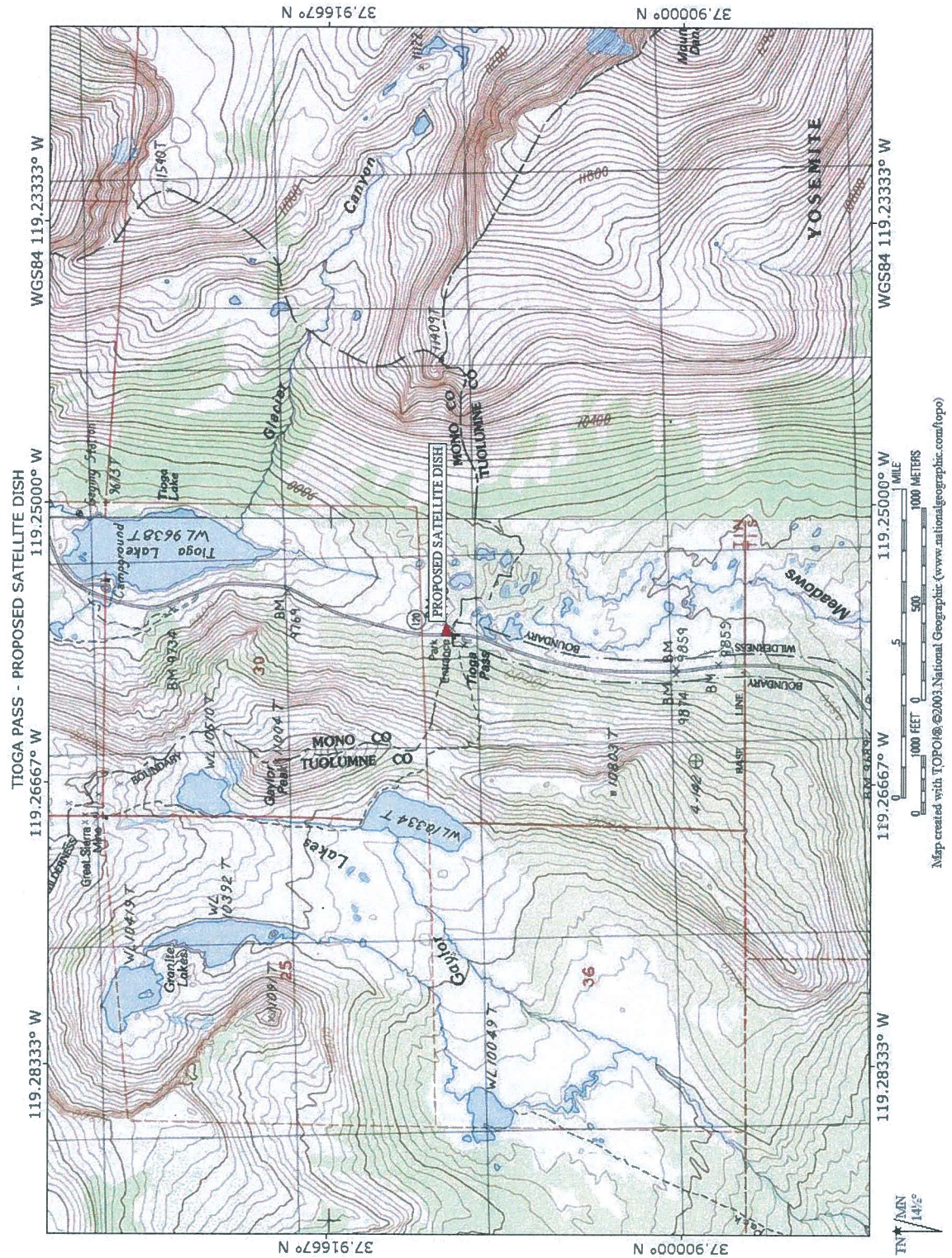
Typical Dish Installation

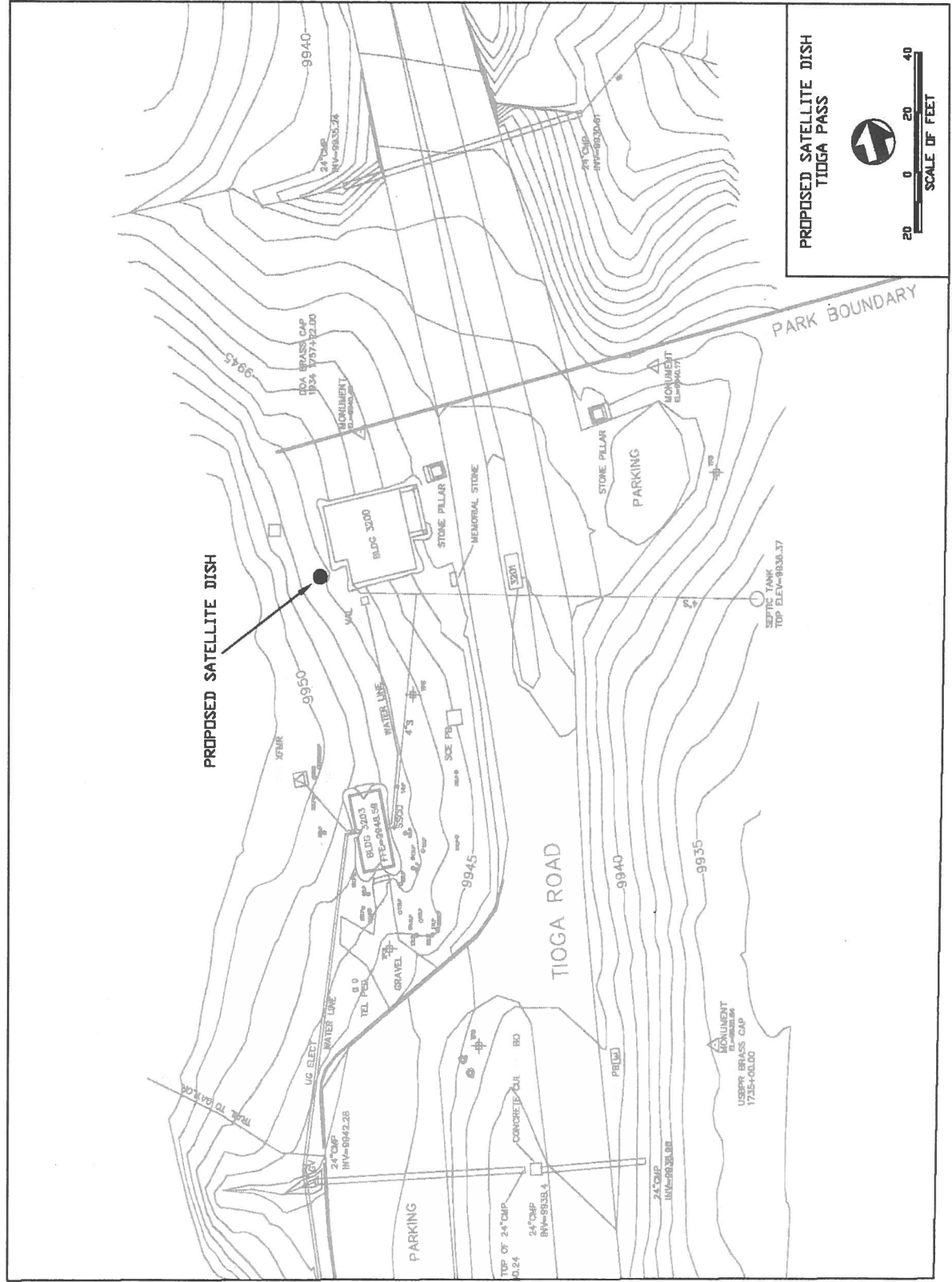
Notes:

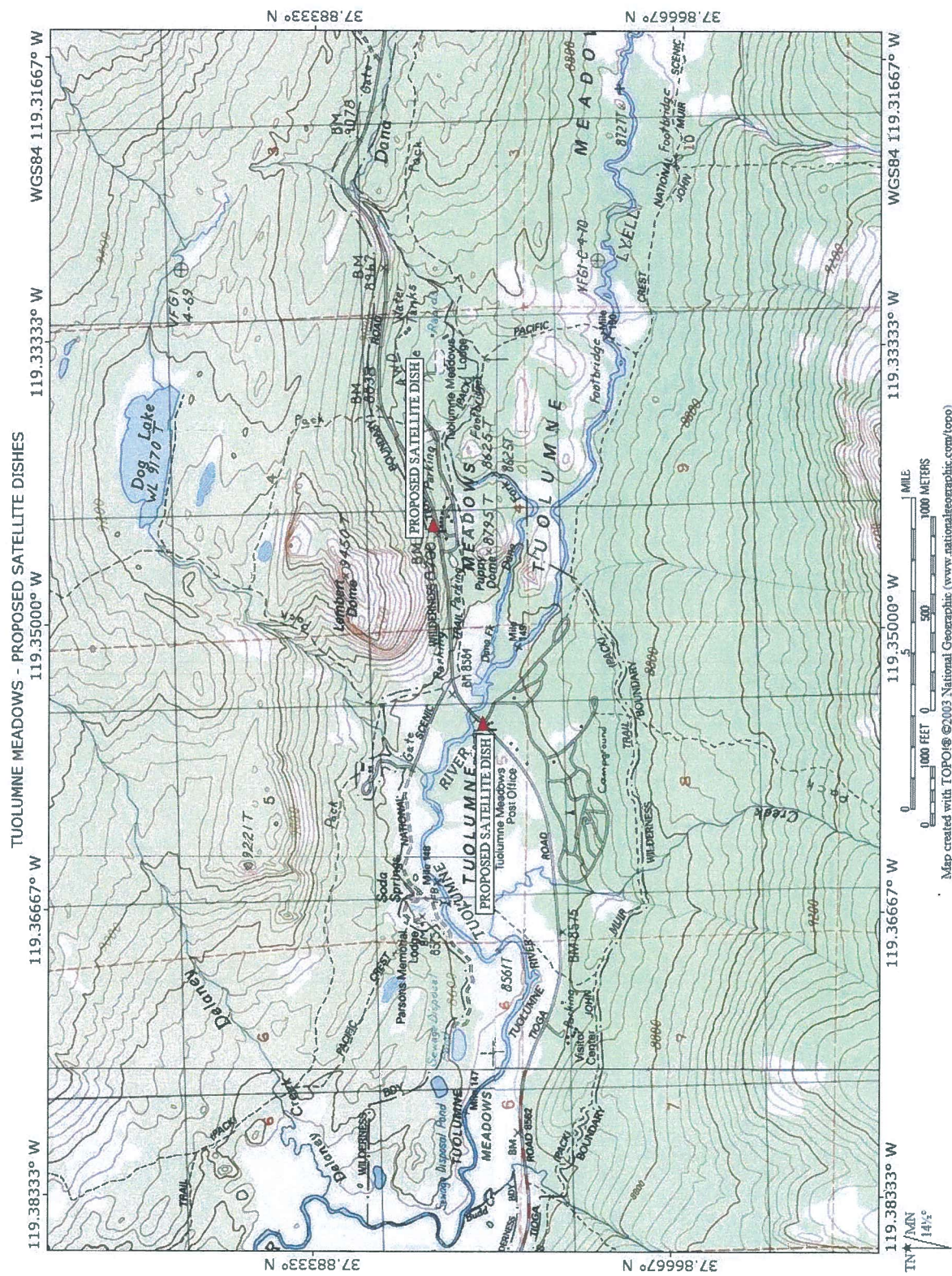
All electric for de-ice dish will be provided by the park and meet all current NEC, local and state codes.

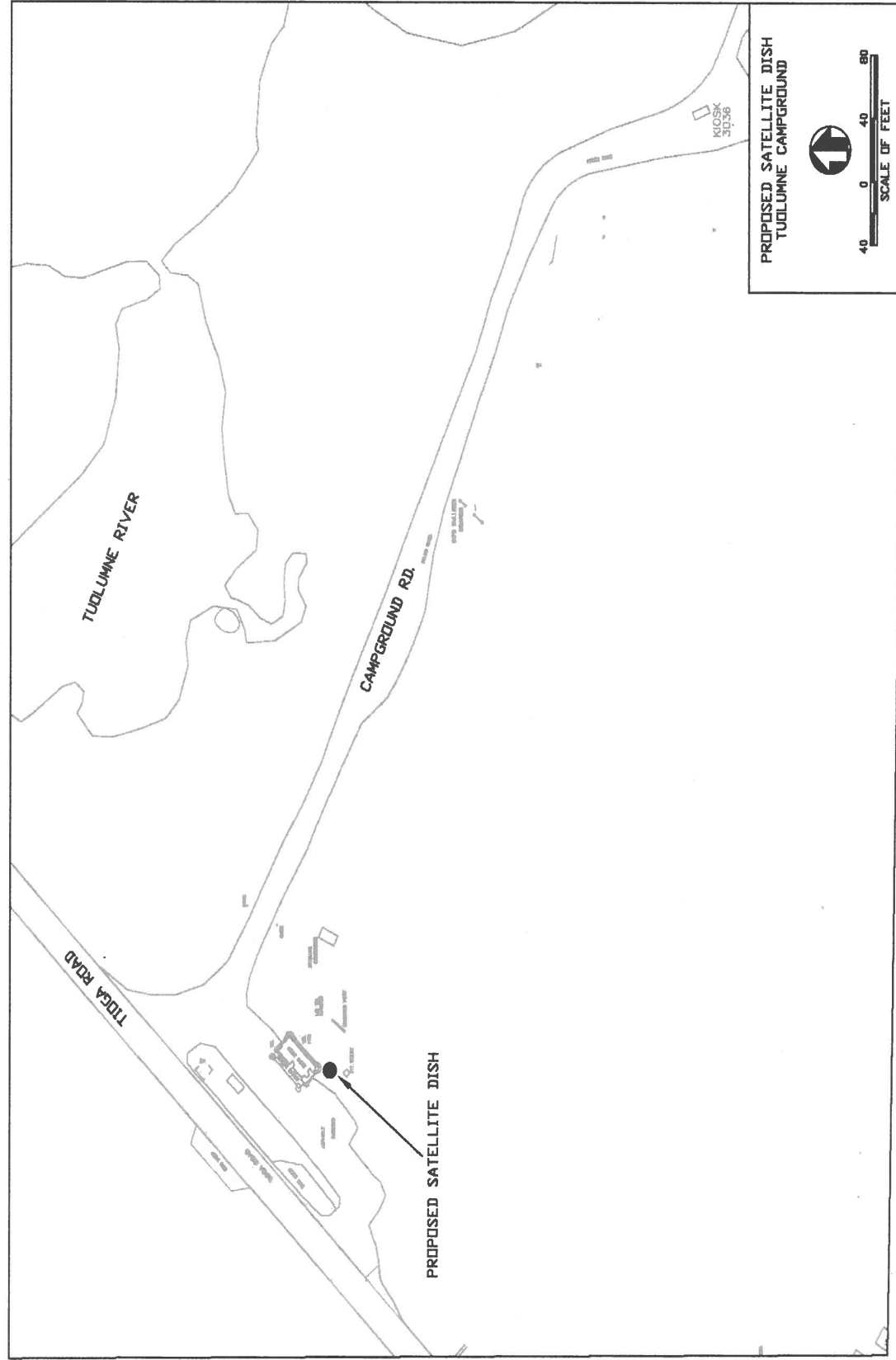
All trenching will be to a depth of 18" with a width varying from 8" to 12" depending on the availability trenching equipment at time of install.

All points of entry (POE's) into buildings will be sealed so moisture does not enter the building. All POE's will be determined at the time of installation to utilize the best possible location.











ASSESSMENT OF ACTIONS HAVING AN EFFECT ON CULTURAL RESOURCES

A. DESCRIPTION OF UNDERTAKING

1. Park: **Yosemite NP** Park District: **Tuolumne**

2. Project Description:

a. Project Name: **2009-086 Tachyon Satellite Installation Phase 3** Date: **August 12, 2009** PEPC
Project ID Number: **27003**

b. Describe project and area of potential effects (as defined in 36 CFR 800.2[c])

The Tachyon Satellite Equipment Installation Project is to provide a Local Area Network/Wide Area Network (LAN/WAN) connection to various operational teams in areas where traditional high speed data connectivity does not exist. There are two locations in this third phase.

Each site will require the installation of a free standing pole (5' to 6') to mount a 1.2 meter (approximately 47.24") dish antenna. Antenna placement will be in the least obvious location at each site while still providing adequate communication with the satellite to deliver high speed data connectivity. Placement of the dish must allow visibility to the satellite located 168 degrees magnetic and 42 degrees in elevation. Placement of the dish at each site was made to limit tree trimming or removal as well as minimizing intrusion into the areas around the buildings and landscapes. The attached documents provide a map of each site, a brief description of each installation and photo of the proposed antenna installation. Laura Kirn from RMS - Anthropology & Archeology Branch provided verbal confirmation that the information provided was adequate for their needs. Initial site surveys were done July 22, 2008 with the Tachyon installer who provided locations for the satellite installations. At the request of Historical Architect Sueann Brown of RMS - History, Architecture & Landscapes Branch (HAL), a revisit of these 2 sites was accomplished on June 19, 2009 with the Tachyon installer. Also present on the revisit was Nancy Pimentel of Business & Revenue Management. Tachyon engineers provided input into painting and color selection for best operational results.

Tioga Pass Entrance Station: The satellite dish will be mounted on a six foot pole approximately one foot behind the center of the Entrance Station Office building #3200. This location will provide good visibility to the satellite. The 3" pole will be self supporting in concrete approximately one foot in diameter and three feet below ground. This dish and pole will be painted Wosky brown by the installer. The closeness of the dish to the building will minimize its visibility to the public.

Tuolumne Camp Ground Office: The satellite dish will be mounted on a five foot pole within five feet of the Camp Ground Office. The 3" pole will be self supporting in concrete approximately one foot in diameter and three feet below ground. An eighteen inch deep, twelve inch wide trench that is approximately 5 feet long will be required to install conduit containing coaxial cable from dish to the Camp Ground Office building #3005. The Tachyon installer proposed a location #1 which is just inside the south east corner of the building. Installation at location #1 will require the removal of a small

lodgepole pine and the trimming of a few lower branches of a larger lodgepole pine. Location #2 is just outside the south east corner of the building. Installation at location #2 will require just trimming of existing trees. HAL concurs with the Tachyon installer for the preferred location #1. If location #2 is selected, HAL recommends installing a fence to reduce the visibility of the satellite dish to the public. The dish and pole will be painted Wosky brown at this site.

3. Has the area of potential effects been surveyed to identify cultural resources?

 No

X Yes, Source or reference: **Tioga Road Entrance Historic District, Tioga Pass Ranger Station, Tuolumne Meadows Historic District, Tuolumne Meadows Archeological District.**

 Check here if no known cultural resources will be affected. (If this is because area has been disturbed, please explain or attach additional information to show the disturbance was so extensive as to preclude intact cultural deposits.)

4. Potentially Affected Resource(s):

Archeological resources affected?

Name and number(s): **Tuolumne Meadows Archeological District** Location:

Tuolumne Meadows

NR status: **1 - Listed in Register and documented**

Historical structures/resources affected?

Name and number(s): **Tioga Pass Ranger Station** LCS 005794

NR status: **1 - Listed in Register and documented**

Name and number(s): **Tuolumne Meadows Ranger Station** LCS 5788 Location:

Tuolumne Meadows

NR status: **1 - Listed in Register and documented**

Cultural landscapes affected?

Name and number(s): **Tioga Road Entrance Historic District**

NR status: **1 - Listed in Register and documented**

Name and number(s): **Tuolumne Meadows Historic District** Location: **Tuolumne Meadows**

5. The proposed action will: (check as many as apply)

No Destroy, remove, or alter features/elements from a historic structure

No Replace historic features/elements in kind

No Add non-historic features/elements to a historic structure

No Alter or remove features/elements of a historic setting or environment (inc. terrain)

Yes Add non-historic features/elements (inc. visual, audible, or atmospheric) to a historic setting or cultural landscape

No Disturb, destroy, or make archeological resources inaccessible

No Disturb, destroy, or make ethnographic resources inaccessible

- No Potentially affect presently unidentified cultural resources
No Begin or contribute to deterioration of historic features, terrain, setting, landscape elements, or archeological or ethnographic resources
No Involve a real property transaction (exchange, sale, or lease of land or structures)
_____ Other (please specify)

6. Measures to prevent or minimize loss or impairment of historic/prehistoric properties:
(Remember that setting, location, and use may be relevant.)

No Assessment of Effect mitigations identified.

7. Supporting Study Data:
(Attach if feasible; if action is in a plan, EA or EIS, give name and project or page number.)

8. Attachments:
☐ Maps ☐ Archeological survey, if applicable ☐ Drawings ☐ Specifications ☐ Photographs
☐ Scope of Work ☐ Site plan ☐ List of Materials ☐ Samples ☐ Other:

Prepared by: **Renea Kennec** Date: **August 12, 2009** Title: **Environmental Protection Assistant** Telephone: **209-379-1038**

B. REVIEWS BY CULTURAL RESOURCE SPECIALISTS

The park 106 coordinator requested review by the park's cultural resource specialist/advisors as indicated by check-off boxes or as follows:

☒ Archeologist
Name: **Laura Kirn**
Date: **08/06/2009**
Comments:

Check if project does not involve ground disturbance ☐
Assessment of Effect: **X** No Historic Properties Affected ☐ No Adverse Effect ☐ Adverse Effect ☐ Streamlined Review
Recommendations for conditions or stipulations:

Doc Method: **No Potential to Cause Effects [800.3(a)(1)]**

☒ Historical Architect
Name: **Sueann Brown**
Date: **08/06/2009**
Comments:

Check if project does not involve ground disturbance []

Assessment of Effect: ☐ No Historic Properties Affected ☒ No Adverse Effect ☐ Adverse Effect ☐ Streamlined Review

Recommendations for conditions or stipulations:

Doc Method: **Park Specific Programmatic Agreement**

[☒] Historical Landscape Architect

Name: **David Humphrey**

Date: **08/05/2009**

Comments: **None.**

Check if project does not involve ground disturbance []

Assessment of Effect: ☐ No Historic Properties Affected ☒ No Adverse Effect ☐ Adverse Effect ☐ Streamlined Review

Recommendations for conditions or stipulations: **None.**

Doc Method: **Park Specific Programmatic Agreement**

No Reviews From: **Curator, Historian, 106 Advisor, Other Advisor**

C. PARK SECTION 106 COORDINATOR'S REVIEW AND RECOMMENDATIONS

1. Assessment of Effect:

☐ No Historic Properties Affected ☒ No Adverse Effect ☐ Adverse Effect

2. Compliance requirements:

[] A. STANDARD 36 CFR PART 800 CONSULTATION

Further consultation under 36 CFR Part 800 is needed.

[] B. STREAMLINED REVIEW UNDER THE 2008 SERVICEWIDE PROGRAMMATIC AGREEMENT (PA)

The above action meets all conditions for a streamlined review under section III of the 2008 Servicewide PA for Section 106 compliance.

APPLICABLE STREAMLINED REVIEW Criteria
(Specify 1-16 of the list of streamlined review criteria.)

[] C. PLAN-RELATED UNDERTAKING

Consultation and review of the proposed undertaking were completed in the context of a plan review process, in accordance with the 2008 Servicewide PA and 36 CFR Part 800.

Specify plan/EA/EIS: _____

☒ D. UNDERTAKING RELATED TO ANOTHER AGREEMENT

The proposed undertaking is covered for Section 106 purposes under another document such as a statewide agreement established in accord with 36 CFR 800.7 or counterpart regulations.

Specify: 1999 EA

☐ E. COMPLIANCE REQUIREMENTS SATISFIED BY USE OF NEPA

Documentation is required for the preparation of an EA/FONSI or an EIS/ROD has been developed and used so as also to meet the requirements of 36 CFR 800.3 through 800.6

☐ F. No Potential to Cause Effects [800.3(a)(1)]

☐ G. STIPULATIONS/CONDITIONS

Following are listed any stipulations or conditions necessary to ensure that the assessment of effect above is consistent with 36 CFR Part 800 criteria of effect or to avoid or reduce potential adverse effects.

Recommended by Park Section 106 coordinator:

Signature of Historic Preservation Officer _____

Date: 8-20-09

D. SUPERINTENDENT'S APPROVAL

The proposed work conforms to the NPS *Management Policies* and *Cultural Resource Management Guideline*, and I have reviewed and approve the recommendations, stipulations, or conditions noted in Section C of this form.

Signature of Acting Superintendent _____

Date: 8/26/2009