



IN REPLY REFER TO:  
L7615(YOSE-PM)

## United States Department of the Interior

### NATIONAL PARK SERVICE

Yosemite National Park  
P. O. Box 577  
Yosemite, California 95389

#### Memorandum

To: Ruth Middlecamp:

From: Superintendent, Yosemite National Park

Subject: NEPA and NHPA Clearance: 2010-055 Camp Wawona - Special Park Use Permit (31846)

The Leadership Team has reviewed the proposed project/action and completed its environmental assessment documentation, and we have determined that there:

- Will not be any effect on threatened, endangered, or rare species and/or their critical habitat.
- Will not be any effect on historical, cultural, or archeological resources; and
- Will not be serious or long-term undesirable environmental or visual effects.

The proposed project/action, therefore, is now cleared for all NEPA and NHPA compliance requirements as presented above. Project plans and specifications are approved and construction or project implementation can commence.

For the proposed project actions to be within compliance requirements during construction or project implementation, the following mitigations must be adhered to:

- Implement Permit Special Conditions 30D and 31A.

//Don L. Neubacher//  
Don L. Neubacher

Enclosure (with attachments)

cc: Statutory Compliance File

*The signed original of this document is on file at  
the Environmental Planning and Compliance  
Office in Yosemite National Park.*



National Park Service  
U.S. Department of the Interior

Yosemite National Park  
Date: 07/13/2010

## Categorical Exclusion Form

**Project:** 2010-055 Camp Wawona - Special Park Use Permit

**PEPC Project Number:** 31846

### Project Description:

The Central California Conference of Seventh-day Adventists, doing business as Camp Wawona, is located on private property, along Forest Drive, in the township of Wawona, within the Wawona District of Yosemite National Park and has been in operation since 1929, offering a variety of recreational activities. Camp Wawona conducts horseback riding into Yosemite National Park in the Wawona area. Rides consist of eight to twelve horses being ridden during a day ride. They do not conduct any overnight stock trips inside of the park. A Special Use Permit will be issued to Camp Wawona in order to manage their use of Yosemite National Park trails. Open grazing and/or camping with stock is not allowed under this permit.

### Project Location:

Mariposa, CA

### Mitigations:

Implement Permit Special Conditions 30D and 31A.

**Describe the category used to exclude action from further NEPA analysis and indicate the number of the category (see Section 3-4 of DO-12):**

- A.6 Commercial use licenses involving no construction.

On the basis of the environmental impact information in the statutory compliance file, with which I am familiar, I am categorically excluding the described project from further NEPA analysis. No exceptional circumstances or conditions in Section 3-6 apply, and the action is fully described in Section 3-4 of DO-12.

**Park Superintendent** //Don L. Neubacher//

**Date** 7/22/10

*The signed original of this document is on file at  
the Environmental Planning and Compliance  
Office in Yosemite National Park.*



National Park Service  
U.S. Department of the Interior

Yosemite National Park  
Date: 07/13/2010

## ENVIRONMENTAL SCREENING FORM (ESF)

### DO-12 APPENDIX 1

**Date Form Initiated:** 07/06/2010

Updated May 2007 - per 2004 Departmental Manual revisions and proposed Director's Order 12 changes

#### A. PROJECT INFORMATION

**Park Name:** Yosemite National Park  
**Project Title:** 2010-055 Camp Wawona - Special Park Use Permit  
**PEPC Project Number:** 31846  
**Project Type:** Permit - Special Use (SUP)  
**Project Location:** **County, State:** Mariposa, California **Other:** Wawona District  
**Project Leader:** Ruth Middlecamp

**Preliminary drawings attached?** Yes

**Is project a hot topic?** (controversial or sensitive issues that should be brought to attention of Regional Director)?  
No

#### B. RESOURCE EFFECTS TO CONSIDER:

Identify potential effects to the following physical, natural, or cultural resources	No Effect	Negligible Effects	Minor Effects	Exceeds Minor Effects	Data Needed to Determine/Notes
1. Geologic resources – soils, bedrock, streambeds, etc.		Negligible			Soil disturbances will not exceed normal stock use.
2. From geohazards	No				
3. Air quality	No				
4. Soundscapes	No				
5. Water quality or quantity	No				
6. Streamflow characteristics	No				Stock campsites must be a 100 feet from any water source.
7. Marine or estuarine resources	No				
8. Floodplains or wetlands	No				

9. Land use, including occupancy, income, values, ownership, type of use	No				
10. Rare or unusual vegetation – old growth timber, riparian, alpine	No				
11. Species of special concern (plant or animal; state or federal listed or proposed for listing) or their habitat	No				
12. Unique ecosystems, biosphere reserves, World Heritage Sites	No				Yosemite National Park is a World Heritage Site.
13. Unique or important wildlife or wildlife habitat	No				
14. Unique or important fish or fish habitat	No				
15. Introduce or promote non-native species (plant or animal)		Negligible			This Commercial Use Authorization strongly encourages the use of weed-free feed.
16. Recreation resources, including supply, demand, visitation, activities, etc.	No				
17. Visitor experience, aesthetic resources	No				
18. Archeological resources		Negligible			In complying with all the conditions of the Commercial Use Authorization, the holder shall train their clients to ensure that the park's geological, biological, historical, and archeological resources are not disturbed.
19. Prehistoric/historic structure		Negligible			See #18 above.
20. Cultural landscapes		Negligible			See #18 above.
21. Ethnographic resources		Negligible			See #18 above.
22. Museum collections (objects, specimens, and archival and manuscript collections)	No				
23. Socioeconomics, including employment, occupation, income changes, tax base, infrastructure	No				
24. Minority and low income populations, ethnography, size,	No				

migration patterns, etc.					
25. Energy resources	No				
26. Other agency or tribal land use plans or policies	No				
27. Resource, including energy, conservation potential, sustainability	No				
28. Urban quality, gateway communities, etc.	No				
29. Long-term management of resources or land/resource productivity	No				
30. Other important environment resources (e.g. geothermal, paleontological resources)?	No				

### C. MANDATORY CRITERIA

<b>Mandatory Criteria: If implemented, would the proposal:</b>	<b>Yes</b>	<b>No</b>	<b>N/A</b>	<b>Comment or Data Needed to Determine</b>
A. Have significant impacts on public health or safety?		No		
B. Have significant impacts on such natural resources and unique geographic characteristics as historic or cultural resources; park, recreation, or refuge lands; wilderness areas; wild or scenic rivers; national natural landmarks; sole or principal drinking water aquifers; prime farmlands; wetlands (Executive Order 11990); floodplains (Executive Order 11988); national monuments; migratory birds; and other ecologically significant or critical areas?		No		
C. Have highly controversial environmental effects or involve unresolved conflicts concerning alternative uses of available resources (NEPA section 102(2)(E))?		No		
D. Have highly uncertain and potentially significant environmental effects or involve unique or unknown environmental risks?		No		
E. Establish a precedent for future action or represent a decision in principle about future actions with potentially significant environmental effects?		No		

F. Have a direct relationship to other actions with individually insignificant, but cumulatively significant, environmental effects?		No		
G. Have significant impacts on properties listed or eligible for listing on the National Register of Historic Places, as determined by either the bureau or office?		No		
H. Have significant impacts on species listed or proposed to be listed on the List of Endangered or Threatened Species, or have significant impacts on designated Critical Habitat for these species?		No		
I. Violate a federal law, or a state, local, or tribal law or requirement imposed for the protection of the environment?		No		
J. Have a disproportionately high and adverse effect on low income or minority populations (Executive Order 12898)?		No		
K. Limit access to and ceremonial use of Indian sacred sites on federal lands by Indian religious practitioners or significantly adversely affect the physical integrity of such sacred sites (Executive Order 13007)?		No		
L. Contribute to the introduction, continued existence, or spread of noxious weeds or non-native invasive species known to occur in the area or actions that may promote the introduction, growth, or expansion of the range of such species (Federal Noxious Weed Control Act and Executive Order 13112)?		No		

For the purpose of interpreting these procedures within the NPS, any action that has the potential to violate the NPS Organic Act by impairing park resources or values would constitute an action that triggers the DOI exception for actions that threaten to violate a federal law for protection of the environment.

#### **D. OTHER INFORMATION**

Are personnel preparing this form familiar with the site? Yes

Did personnel conduct a site visit? No

Is the project in an approved plan such as a General Management Plan or an Implementation Plan with an accompanying NEPA document? No

Are there any interested or affected agencies or parties? No

Has consultation with all affected agencies or tribes been completed? Yes

Are there any connected, cumulative, or similar actions as part of the proposed action? (e.g., other development projects in area or identified in GMP, adequate/available utilities to accomplish project)? No

#### E. INTERDISCIPLINARY TEAM SIGNATORIES

<u>Interdisciplinary Team</u>	<u>Field of Expertise</u>
Don L. Neubacher	Superintendent
Kathleen Morse	Chief of Planning
Mark Butler	Chief of Project Management
Katariina Tuovinen	Chief of Administration Management
Ed Walls	Chief of Facilities Management
Niki Nicholas	Chief of Resources Management & Science
Marty Nielson	Chief of Business and Revenue Management
Tom Medema	Chief of Interpretation and Education
Charles Cuvelier	Acting Chief of Visitor and Resource Protection
Ruth Middlecamp	Project Leader
Elexis Mayer	Environmental Planning and Compliance Program Manager
Jeannette Simons	NHPA Specialist
Renea Kennec	NEPA Specialist

#### H. SUPERVISORY SIGNATORY

Recommended:

Compliance Specialists	Date
<u>//Renea Kennec//</u> Compliance Specialist – Renea Kennec	<u>7/20/10</u>
<u>//Elexis Mayer//</u> Compliance Program Manager – Elexis Mayer	<u>7/20/10</u>
<u>//Mark A. Butler//</u> Chief, Project Management – Mark Butler	<u>7/21/10</u>

Approved:

Superintendent	Date
<u>//Don L. Neubacher//</u> Don L. Neubacher	<u>7/22/10</u>

*The signed original of this document is on file at  
the Environmental Planning and Compliance  
Office in Yosemite National Park.*



National Park Service  
U.S. Department of the Interior

Yosemite National Park  
Date: 07/13/2010

## PARK ESF ADDENDUM

Today's Date: **July 13, 2010**

### PROJECT INFORMATION

**Park Name:** Yosemite National Park  
**Project Title:** 2010-055 Camp Wawona - Special Park Use Permit  
**PEPC Project Number:** 31846  
**Project Type:** Permit - Special Use (SUP)  
**Project Location:** County, State: **Mariposa, California** Other: **Wawona District**  
**Project Leader:** Ruth Middlecamp

### PARK ESF ADDENDUM QUESTIONS & ANSWERS

ESF Addendum Questions	Yes	No	N/A	Data Needed to Determine/Notes
<b>SPECIAL STATUS SPECIES CHECKLIST</b>				
1. Listed or proposed threatened or endangered species (Federal or State)?		No		
2. Species of special concern (Federal or State)?		No		
3. Park rare plants or vegetation?		No		
4. Potential habitat for any special-status species listed above?		No		
<b>NATIONAL HISTORIC PRESERVATION ACT CHECKLIST</b>				
5. Entail ground disturbance?	Yes			Minimal; no new structures are allowed under this CUA.
6. Are any archeological or ethnographic sites located within the area of potential effect?		No		The holder will not allow employees or clients to disturb or remove any natural and/or historic and/or cultural artifacts from the park, including arrowheads, rock mortars, glass bottles/jars or similar artifacts.
7. Entail alteration of a historic		No		



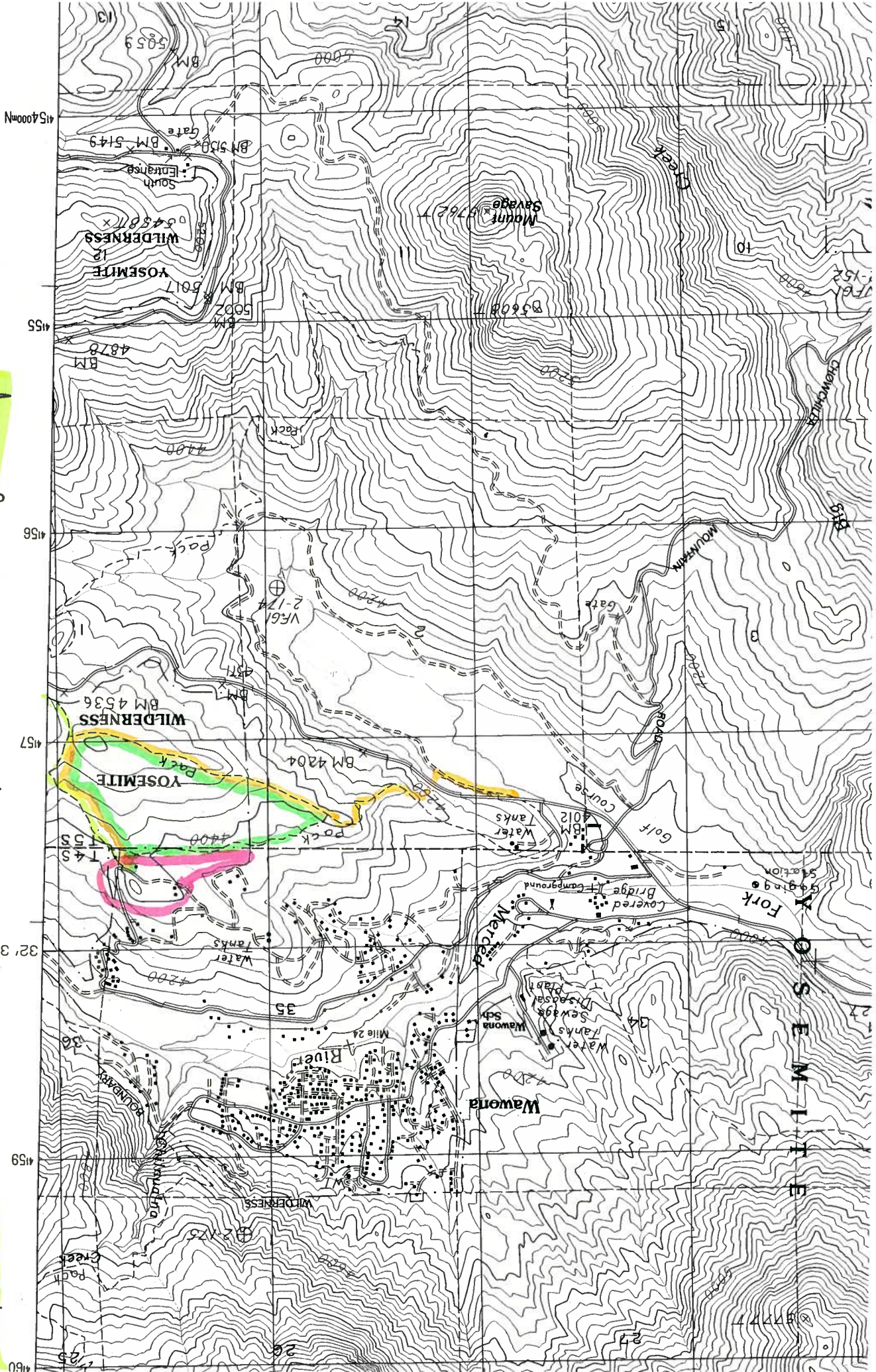
structure or cultural landscape?				
8. Has a National Register form been completed?		No		
9. Are there any structures on the park's List of Classified Structures in the area of potential effect?		No		
<b>WILD AND SCENIC RIVERS ACT CHECKLIST</b>				
10. Fall within a wild and scenic river corridor?	Yes			Parkwide.
11. Fall within the bed and banks AND will affect the free-flow of the river?		No		
12. Have the possibility of affecting water quality of the area?		No		
13. Remain consistent with its river segment classification?	Yes			
14. Fall on a tributary of a Wild and Scenic River?	Yes			Parkwide.
15. Will the project encroach or intrude upon the Wild and Scenic River corridor?		No		There is no camping or grazing associated with this permit.
16. Will the project unreasonably diminish scenic, recreational, or fish and wildlife values?		No		
17. Consistent with the provisions in the Merced River Plan Settlement Agreement?	Yes			
<b>WILDERNESS ACT CHECKLIST</b>				
18. Within designated Wilderness?	Yes			This activity is associated with the Wilderness Management Plan.
19. Within a Potential Wilderness Addition?	Yes			

Local Camp Wawona Trails 30min

Upper Loop of Brooke Walk 45min

Brooke walk to junction w/ 41 & Mariposa grove trail 3 hrs

Camp Wawona to Goat Meadows via Mariposa grove overnight trip







**Trails used by Camp Wawona Stables from Summer 2004 - Summer 2009**

**\*See Attached Map for Local Camp Wawona Trails**

**2004**

**June 21 - No usage**

**June 22 - No usage**

**June 23 - Local Camp Wawona trails with 8 horses for 30 minutes**

**June 24 - Upper Loop of Brook Walk with 8 horses for 45 minutes**

**June 25 - Local Camp Wawona trails with 8 horses for 30 minutes**

-----

**June 28 - No usage**

**June 29 - No usage**

**June 30 - Local Camp Wawona trails with 8 horses for 30 minutes**

**July 1 - Upper Loop of Brook Walk with 8 horses for 45 minutes**

**July 2 - Local Camp Wawona trails with 8 horses for 30 minutes**

-----

**July 5 - No usage**

**July 6 - No usage**

**July 7 - Local Camp Wawona trails with 8 horses for 30 minutes**

**July 8 - Upper Loop of Brook Walk with 8 horses for 45 minutes**

**July 9 - Local Camp Wawona trails with 8 horses for 30 minutes**

-----

**July 12 - No usage**

**July 13 - No usage**

**July 14 - Local Camp Wawona trails with 8 horses for 30 minutes**

**July 15 - Upper Loop of Brook Walk with 8 horses for 45 minutes**

**July 16 - Local Camp Wawona trails with 8 horses for 30 minutes**

-----

**July 19** – No usage

**July 20** – No usage

**July 21** – Local Camp Wawona trails with 8 horses for 30 minutes

**July 22** – Upper Loop of Brook Walk with 10 horses for 45 minutes

**July 23** – Local Camp Wawona trails with 8 horses for 30 minutes

-----

**July 26** – No usage

**July 27** – No usage

**July 28** – Local Camp Wawona trails with 8 horses for 30 minutes

**July 29** – Upper Loop of Brook Walk with 8 horses for 45 minutes

**July 30** – Local Camp Wawona trails with 8 horses for 30 minutes

-----

## **2005**

**June 20** – No usage

**June 21** – No usage

**June 22** – Local Camp Wawona trails with 8 horses for 30 minutes

**June 23** – Upper Loop of Brook Walk with 8 horses for 45 minutes

**June 24** – Local Camp Wawona trails with 8 horses for 30 minutes

-----

**June 27** – No usage

**June 28** – No usage

**June 29** – Local Camp Wawona trails with 8 horses for 30 minutes

**June 30** – Upper Loop of Brook Walk with 8 horses for 45 minutes

**July 1** – Local Camp Wawona trails with 8 horses for 30 minutes

-----

**July 4** – No usage

**July 5** – No usage

**July 6** - Local Camp Wawona trails with 8 horses for 30 minutes

**July 7** - Upper Loop of Brook Walk with 8 horses for 45 minutes

**July 8** - Local Camp Wawona trails with 8 horses for 30 minutes

-----

**July 11** - No usage

**July 12** - No usage

**July 13** - Local Camp Wawona trails with 8 horses for 30 minutes

**July 14** - Upper Loop of Brook Walk with 8 horses for 45 minutes

**July 15** - Local Camp Wawona trails with 8 horses for 30 minutes

-----

**July 18** - No usage

**July 19** - No usage

**July 20** - Local Camp Wawona trails with 8 horses for 30 minutes

**July 21** - Upper Loop of Brook Walk with 10 horses for 45 minutes

**July 22** - Local Camp Wawona trails with 8 horses for 30 minutes

-----

**July 25** - No usage

**July 26** - No usage

**July 27** - Local Camp Wawona trails with 8 horses for 30 minutes

**July 28** - Upper Loop of Brook Walk with 8 horses for 45 minutes

**July 29** - Local Camp Wawona trails with 8 horses for 30 minutes

-----

## **2006**

**June 19** - No usage

**June 20** - No usage

**June 21** - Local Camp Wawona trails with 8 horses for 30 minutes

**June 22** - Upper Loop of Brook Walk with 8 horses for 45 minutes



**June 23** – Local Camp Wawona trails with 8 horses for 30 minutes

-----

**June 26** – No usage

**June 27** – No usage

**June 28** – Local Camp Wawona trails with 8 horses for 30 minutes

**June 29** – Upper Loop of Brook Walk with 8 horses for 45 minutes

**June 30** – Local Camp Wawona trails with 8 horses for 30 minutes

-----

**July 3** – No usage

**July 4** – No usage

**July 5** – Local Camp Wawona trails with 8 horses for 30 minutes

**July 6** – Upper Loop of Brook Walk with 8 horses for 45 minutes

**July 7** – Local Camp Wawona trails with 8 horses for 30 minutes

-----

**July 10** – No usage

**July 11** – No usage

**July 12** – Local Camp Wawona trails with 8 horses for 30 minutes

**July 13** – Upper Loop of Brook Walk with 8 horses for 45 minutes

**July 14** – Local Camp Wawona trails with 8 horses for 30 minutes

-----

**July 17** – No usage

**July 18** – No usage

**July 19** – Local Camp Wawona trails with 8 horses for 30 minutes

**July 20** – Upper Loop of Brook Walk with 10 horses for 45 minutes

**July 21** – Local Camp Wawona trails with 8 horses for 30 minutes

-----

**July 24** – No usage

**July 25** – No usage

**July 26** – Local Camp Wawona trails with 8 horses for 30 minutes

**July 27** – Upper Loop of Brook Walk with 8 horses for 45 minutes

**July 28** – Local Camp Wawona trails with 8 horses for 30 minutes

-----

## **2007**

**June 18** – No usage

**June 19** – No usage

**June 20** – Local Camp Wawona trails with 10 horses for 30 minutes

**June 21** – Upper Loop of Brook Walk with 10 horses for 45 minutes

**June 22** – Local Camp Wawona trails with 10 horses for 30 minutes

-----

**June 25** – No usage

**June 26** – No usage

**June 27** – Local Camp Wawona trails with 10 horses for 30 minutes

**June 28** – Upper Loop of Brook Walk with 10 horses for 45 minutes

**June 29** – Local Camp Wawona trails with 10 horses for 30 minutes

-----

**July 2** – No usage

**July 3** – No usage

**July 4** – Local Camp Wawona trails with 10 horses for 30 minutes

**July 5** – Upper Loop of Brook Walk with 10 horses for 45 minutes

**July 6** – Local Camp Wawona trails with 10 horses for 30 minutes

-----

**July 9** – No usage

**July 10** – No usage

**July 11** – Local Camp Wawona trails with 10 horses for 30 minutes



**July 12** – Upper Loop of Brook Walk with 10 horses for 45 minutes

**July 13** – Local Camp Wawona trails with 10 horses for 30 minutes

-----

**July 16** – No usage

**July 17** – No usage

**July 18** – Local Camp Wawona trails with 10 horses for 30 minutes

**July 19** – Upper Loop of Brook Walk with 12 horses for 45 minutes

**July 20** – Local Camp Wawona trails with 10 horses for 30 minutes

-----

**July 23** – No usage

**July 24** – Upper Loop of Brook Walk with 10 horses for 45 minutes

**July 25** – Brooke Walk to Junction with 41 up to Mariposa Groves with 10 horses

**July 26** – Mariposa Groves back to Camp Wawona – Once with 10 horses

**July 27** – Local Camp Wawona trails with 10 horses for 30 minutes

-----

## **2008**

**June 16** – No usage

**June 17** – No usage

**June 18** – Local Camp Wawona trails with 10 horses for 30 minutes

**June 19** – Upper Loop of Brook Walk with 10 horses for 45 minutes

**June 20** – Local Camp Wawona trails with 10 horses for 30 minutes

-----

**June 23** – No usage

**June 24** – No usage

**June 25** – Local Camp Wawona trails with 10 horses for 30 minutes

**June 26** – Upper Loop of Brook Walk with 10 horses for 45 minutes

**June 27** – Local Camp Wawona trails with 10 horses for 30 minutes

-----

**June 30** – No usage

**July 1** – No usage

**July 2** – Local Camp Wawona trails with 10 horses for 30 minutes

**July 3** – Upper Loop of Brook Walk with 10 horses for 45 minutes

**July 4** – Local Camp Wawona trails with 10 horses for 30 minutes

-----

**July 7** – No usage

**July 8** – Upper Loop of Brook Walk with 10 horses for 45 minutes

**July 9** – Brooke Walk to Junction with 41 up to Mariposa Groves with 10 horses

**July 10** – Mariposa Groves back to Camp Wawona with 10 horses

**July 11** – Local Camp Wawona trails with 10 horses for 30 minutes

-----

**July 14** – No usage

**July 15** – Upper Loop of Brook Walk with 10 horses for 45 minutes

**July 16** – Brooke Walk to Junction with 41 up to Mariposa Groves with 10 horses

**July 17** – Mariposa Groves back to Camp Wawona with 10 horses

**July 18** – Local Camp Wawona trails with 10 horses for 30 minutes

-----

**July 21** – No usage

**July 22** – No usage

**July 23** – Local Camp Wawona trails with 10 horses for 30 minutes

**July 24** – Upper Loop of Brook Walk with 10 horses for 45 minutes

**July 25** – Local Camp Wawona trails with 10 horses for 30 minutes

-----

**July 28** – No usage

**July 29** – Upper Loop of Brook Walk with 10 horses for 45 minutes

**July 30** - Brooke Walk to Junction with 41 up to Mariposa Groves with 10 horses

**July 31** - Mariposa Groves back to Camp Wawona with 10 horses

**August 1** - Local Camp Wawona trails with 10 horses for 30 minutes

-----

## **2009**

**June 22** - No usage

**June 23** - No usage

**June 24** - Local Camp Wawona trails with 10 horses for 30 minutes

**June 25** - Upper Loop of Brook Walk with 10 horses for 45 minutes

**June 26** - Local Camp Wawona trails with 10 horses for 30 minutes

-----

**June 29** - No usage

**June 30** - No usage

**July 1** - Local Camp Wawona trails with 10 horses for 30 minutes

**July 2** - Upper Loop of Brook Walk with 10 horses for 45 minutes

**July 3** - Local Camp Wawona trails with 10 horses for 30 minutes

-----

**July 6** - No usage

**July 7** - No usage

**July 8** - Local Camp Wawona trails with 10 horses for 30 minutes

**July 9** - Upper Loop of Brook Walk with 10 horses for 45 minutes

**July 10** - Local Camp Wawona trails with 10 horses for 30 minutes

-----

**July 13** - No usage

**July 14** - Upper Loop of Brook Walk with 10 horses for 45 minutes

**July 15** - Brooke Walk to Junction with 41 up to Mariposa Groves with 10 horses

**July 16** - Mariposa Groves back to Camp Wawona with 10 horses

**July 17** - Local Camp Wawona trails with 10 horses for 30 minutes

-----

**July 20** - No usage

**July 21** - Upper Loop of Brook Walk with 10 horses for 45 minutes

**July 22** - Upper Loop of Brook Walk connected to Meadow Loop for 3.5 hours

**July 23** - Local Camp Wawona trails with 10 horses for 30 minutes

**July 24** - Local Camp Wawona trails with 10 horses for 30 minutes

-----

**July 27** - No usage

**July 28** - No usage

**July 29** - Local Camp Wawona trails with 10 horses for 30 minutes

**July 30** - Upper Loop of Brook Walk with 10 horses for 45 minutes

**July 31** - Local Camp Wawona trails with 10 horses for 30 minutes



National Park Service  
U.S. Department of the Interior

Yosemite National Park  
Date: 07/14/2010

## ASSESSMENT OF ACTIONS HAVING AN EFFECT ON CULTURAL RESOURCES

### A. DESCRIPTION OF UNDERTAKING

1. Park: **Yosemite National Park**    Park District: **Wawona**

#### 2. Project Description:

- a. Project Name: **2010-055 Camp Wawona - Special Park Use Permit**
- b. Date: **July 14, 2010**
- c. PEPC Project ID Number: **31846**

### 3. Has the area of potential effects been surveyed to identify cultural resources?

☐ No  
☒ Yes, Source or reference:

☐ Check here if no known cultural resources will be affected. (If this is because area has been disturbed, please explain or attach additional information to show the disturbance was so extensive as to preclude intact cultural deposits.)

### 4. Potentially Affected Resources:

None

### 5. The proposed action will: (check as many as apply)

- ☒ **No** Destroy, remove, or alter features/elements from a historic structure
- ☒ **No** Replace historic features/elements in kind
- ☒ **No** Add non-historic features/elements to a historic structure
- ☒ **No** Alter or remove features/elements of a historic setting or environment (inc. terrain)
- ☒ **No** Add non-historic features/elements (inc. visual, audible, or atmospheric) to a historic setting or cultural landscape
- ☒ **No** Disturb, destroy, or make archeological resources inaccessible
- ☒ **No** Disturb, destroy, or make ethnographic resources inaccessible
- ☒ **No** Potentially affect presently unidentified cultural resources
- ☒ **No** Begin or contribute to deterioration of historic features, terrain, setting, landscape elements, or archeological or ethnographic resources
- ☒ **No** Involve a real property transaction (exchange, sale, or lease of land or structures)
- ☐ Other (please specify)

6. Measures to prevent or minimize loss or impairment of historic/prehistoric properties:  
(Remember that setting, location, and use may be relevant.)

Implement Permit Special Conditions 30D and 31A.

7. Supporting Study Data:

(Attach if feasible; if action is in a plan, EA or EIS, give name and project or page number.)

8. Attachments:

☐ Maps ☐ Archeological survey, if applicable ☐ Drawings ☐ Specifications ☐ Photographs  
☐ Scope of Work ☐ Site plan ☐ List of Materials ☐ Samples ☐ Other:

Prepared by: Renea Kennec Date: July 14, 2010 Title: Environmental Protection  
Specialist Telephone: 209-379-1038

## B. REVIEWS BY CULTURAL RESOURCE SPECIALISTS

The park 106 coordinator requested review by the park's cultural resource specialist/advisors as indicated by check-off boxes or as follows:

---

☒ Archeologist  
Name: Sonny Montague  
Date: 07/13/2010  
Comments:

*Check if project does not involve ground disturbance* ☐  
Assessment of Effect: ☐ No Historic Properties Affected ☒ No Adverse Effect ☐ Adverse  
Effect ☐ Streamlined Review  
Recommendations for conditions or stipulations:

Doc Method: Park Specific Programmatic Agreement

---

☒ Historical Architect  
Name: Sueann Brown  
Date: 07/07/2010  
Comments:

*Check if project does not involve ground disturbance* ☐  
Assessment of Effect: ☐ No Historic Properties Affected ☒ No Adverse Effect ☐ Adverse  
Effect ☐ Streamlined Review  
Recommendations for conditions or stipulations:

Doc Method: Park Specific Programmatic Agreement

---

☒ Historical Landscape Architect

Name: David Humphrey

Date: 07/08/2010

Comments:

*Check if project does not involve ground disturbance* ☐

Assessment of Effect: ☐ No Historic Properties Affected ☒ No Adverse Effect ☐ Adverse Effect ☐ Streamlined Review

Recommendations for conditions or stipulations:

Doc Method: Park Specific Programmatic Agreement

---

No Reviews From: Curator, Historian, 106 Advisor, Other Advisor, Anthropologist

---

## **C. PARK SECTION 106 COORDINATOR'S REVIEW AND RECOMMENDATIONS**

1. Assessment of Effect:

☐ No Historic Properties Affected ☒ No Adverse Effect ☐ Adverse Effect

2. Compliance requirements:

☐ A. STANDARD 36 CFR PART 800 CONSULTATION

Further consultation under 36 CFR Part 800 is needed.

☐ B. STREAMLINED REVIEW UNDER THE 2008 SERVICEWIDE PROGRAMMATIC AGREEMENT (PA)

The above action meets all conditions for a streamlined review under section III of the 2008 Servicewide PA for Section 106 compliance.

APPLICABLE STREAMLINED REVIEW Criteria  
(Specify 1-16 of the list of streamlined review criteria.)

☐ C. PLAN-RELATED UNDERTAKING

Consultation and review of the proposed undertaking were completed in the context of a plan review process, in accordance with the 2008 Servicewide PA and 36 CFR Part 800.

Specify plan/EA/EIS: \_\_\_\_\_

☒ D. UNDERTAKING RELATED TO ANOTHER AGREEMENT

The proposed undertaking is covered for Section 106 purposes under another document such as a statewide agreement established in accord with 36 CFR 800.7 or counterpart regulations.

Specify: \_\_\_\_\_

☐ E. COMPLIANCE REQUIREMENTS SATISFIED BY USE OF NEPA

Documentation is required for the preparation of an EA/FONSI or an EIS/ROD has been developed and used so as also to meet the requirements of 36 CFR 800.3 through 800.6

☐ F. No Potential to Cause Effects [800.3(a)(1)]

☐ G. STIPULATIONS/CONDITIONS

Following are listed any stipulations or conditions necessary to ensure that the assessment of effect above is consistent with 36 CFR Part 800 criteria of effect or to avoid or reduce potential adverse effects.

Recommended by Park Section 106 coordinator:

Signature of Historic Preservation Officer //Jeannette Simons//

Date: 7/15/10

**D. SUPERINTENDENT'S APPROVAL**

The proposed work conforms to the NPS *Management Policies* and *Cultural Resource Management Guideline*, and I have reviewed and approve the recommendations, stipulations, or conditions noted in Section C of this form.

Signature of Superintendent //Don L. Neubacher//

Date: 7/22/10

*The signed original of this document is on file at  
the Environmental Planning and Compliance  
Office in Yosemite National Park.*